

**APPENDIX B**  
*(Volume 4 of 4)*

**Project Maps**

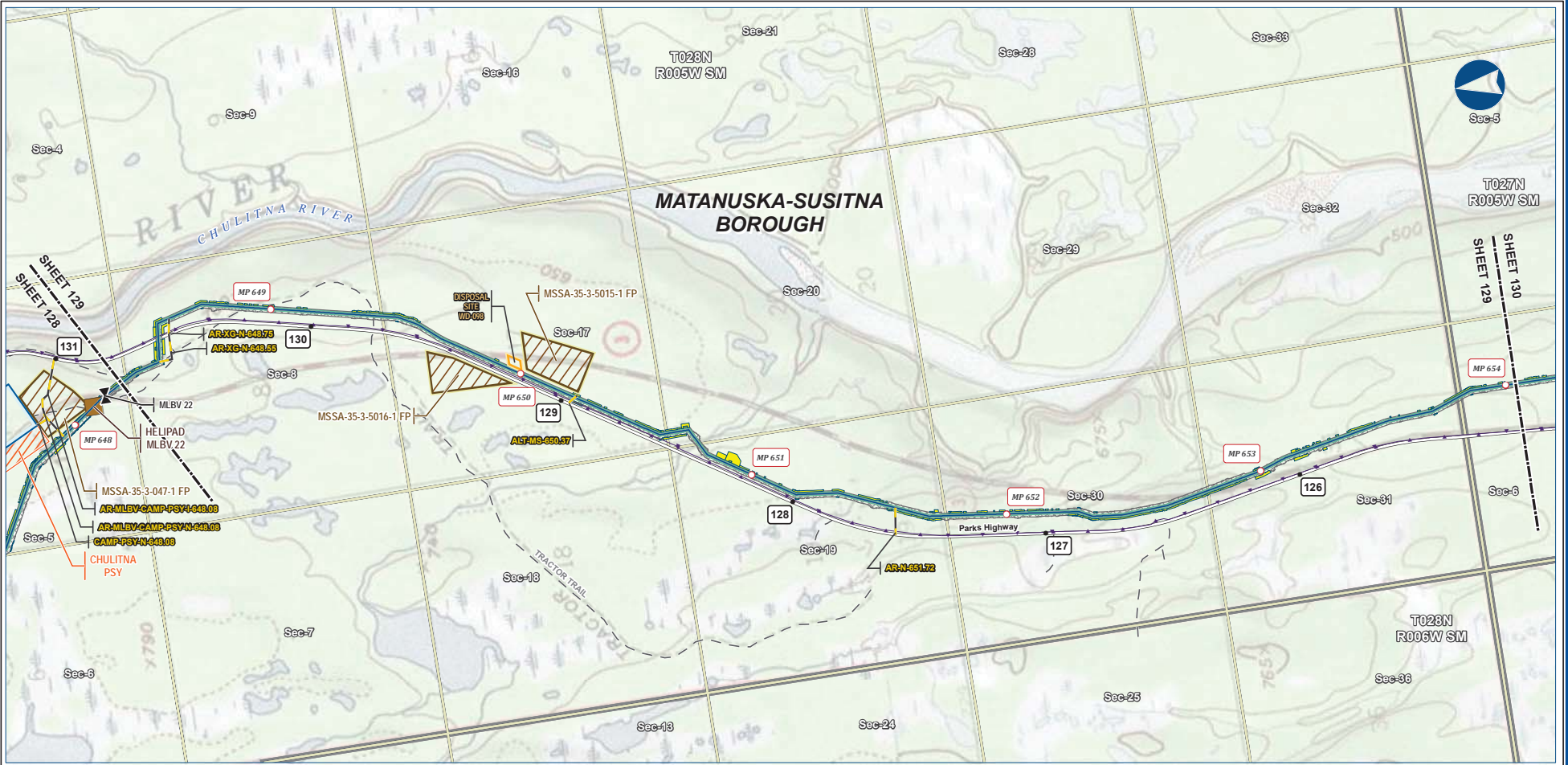
**Mainline Facilities MP 648–806 and Liquefaction Facilities**

**APPENDIX B Volume 4: Project Maps – Mainline Facilities MP 648–806 and Liquefaction Facilities**

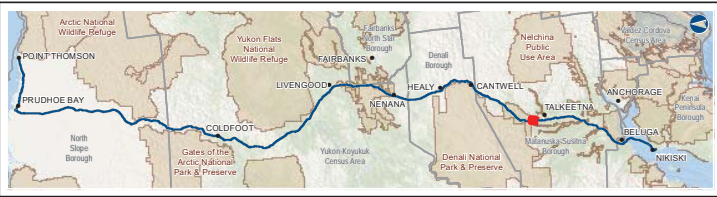
**Table of Contents**

|                                   |       |
|-----------------------------------|-------|
| Mainline Facilities (cont'd)..... | B-136 |
| Liquefaction Facilities .....     | B-164 |

## **Mainline Facilities**



B-136



| PIPELINE |                                 | EXISTING FEATURES |                 |
|----------|---------------------------------|-------------------|-----------------|
|          | Mainline Pipeline               |                   | Permanent ROW   |
|          | Construction ROW                |                   | Existing Roads  |
|          | Access Road - Gravel            |                   | Off Road Trails |
|          | Mainline Blockvalve             |                   | Buried Cable    |
|          | Helipad                         |                   | Section         |
|          | Off ROW Camp                    |                   | Township        |
|          | Pipe Storage Yard (PSY)         |                   |                 |
|          | Disposal Site                   |                   |                 |
|          | Material Site Study Area (MSSA) |                   |                 |
|          | ATWS                            |                   |                 |

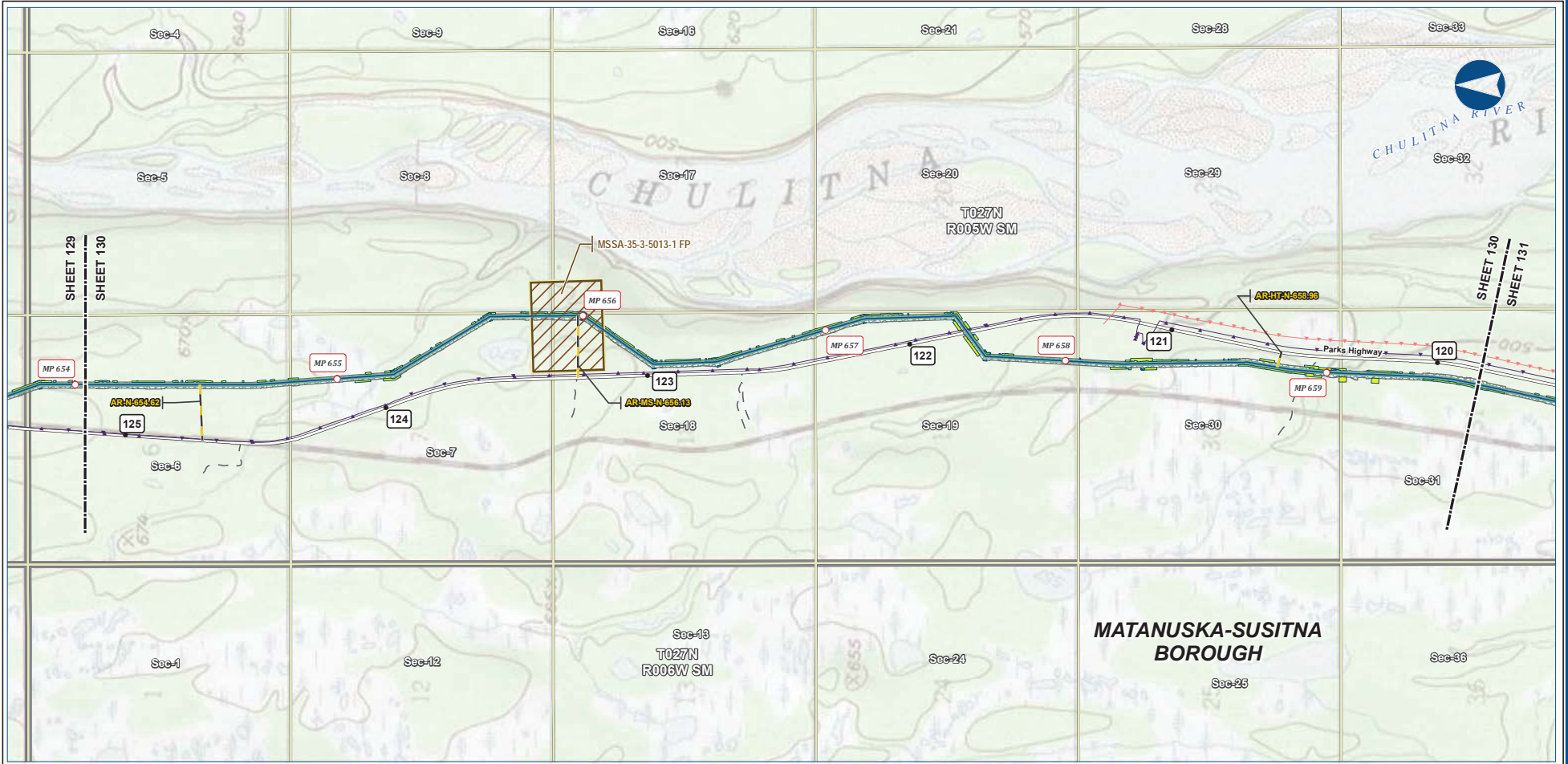
| ALASKA LNG PROJECT<br>Preliminary Facility Locations<br>Mainline Rev C2 Route |                   |             |                                       |
|---|-------------------|-------------|---------------------------------------|
| BOROUGH:  | MATANUSKA-SUSITNA | DRAWN BY:   | AGDC                                  |
| STATE:  | ALASKA            | CHECKED BY: |                                       |
| REV. NO.:   | REVISION          | DATE        |                                       |
| A   | ISSUED FOR REVIEW | 2017-03-10  |                                       |
| <b>PRELIMINARY</b>  |                   |             |                                       |
| 1:24,000  |                   |             |                                       |
| DATE:   | 2017-03-10        | PROJECTION: | NAD83 NSRS2007 ALASKAZONE4 FTUS 54392 |

**DISCLAIMER**

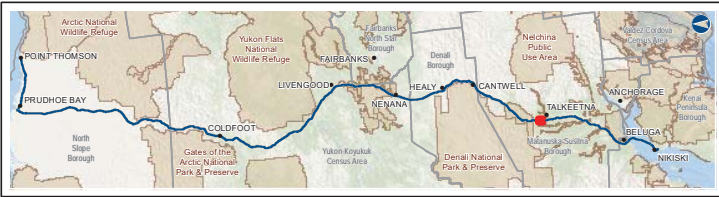
The information contained herein is for informational or planning purposes only. It does not nor should it be deemed to be an offer, request or proposals for rights or occupation of any kind. The Alaska LNG Project Participants and their respective officers, employees and agents, make no warranty, implied or otherwise, nor accept any liability, as to the accuracy or completeness of the information contained in these documents, drawings or electronic files. Do not remove or delete this note from document, drawing or electronic file.

PRELIMINARY FACILITY LOCATIONS - MAINLINE REV C2 ROUTE

ALASKA LNG



B-137



**Legend**

|                      |                                 |                          |
|----------------------|---------------------------------|--------------------------|
| Mainline Pipeline    | Permanent ROW                   | <b>EXISTING FEATURES</b> |
| Access Road - Gravel | Construction ROW                | Existing Roads           |
| ATWS                 | Material Site Study Area (MSSA) | Off Road Trails          |
|                      |                                 | Buried Cable             |
|                      |                                 | Overhead Powerline       |
|                      |                                 | Section                  |
|                      |                                 | Township                 |

**ALASKA LNG PROJECT**  
Preliminary Facility Locations  
Mainline Rev C2 Route

|                    |                   |             |                                       |
|--------------------|-------------------|-------------|---------------------------------------|
| BOROUGH:           | MATANUSKA-SUSITNA | DRAWN BY:   | AGDC                                  |
| STATE:             | ALASKA            | CHECKED BY: |                                       |
| REV. NO.:          | REVISION          | DATE        |                                       |
| A                  | ISSUED FOR REVIEW | 2017-03-10  |                                       |
| <b>PRELIMINARY</b> |                   |             |                                       |
| 1:24,000           |                   |             |                                       |
| DATE:              | 2017-03-10        | PROJECTION: | NAD83 NSRS2007 ALASKAZONE4 FTUS 54392 |

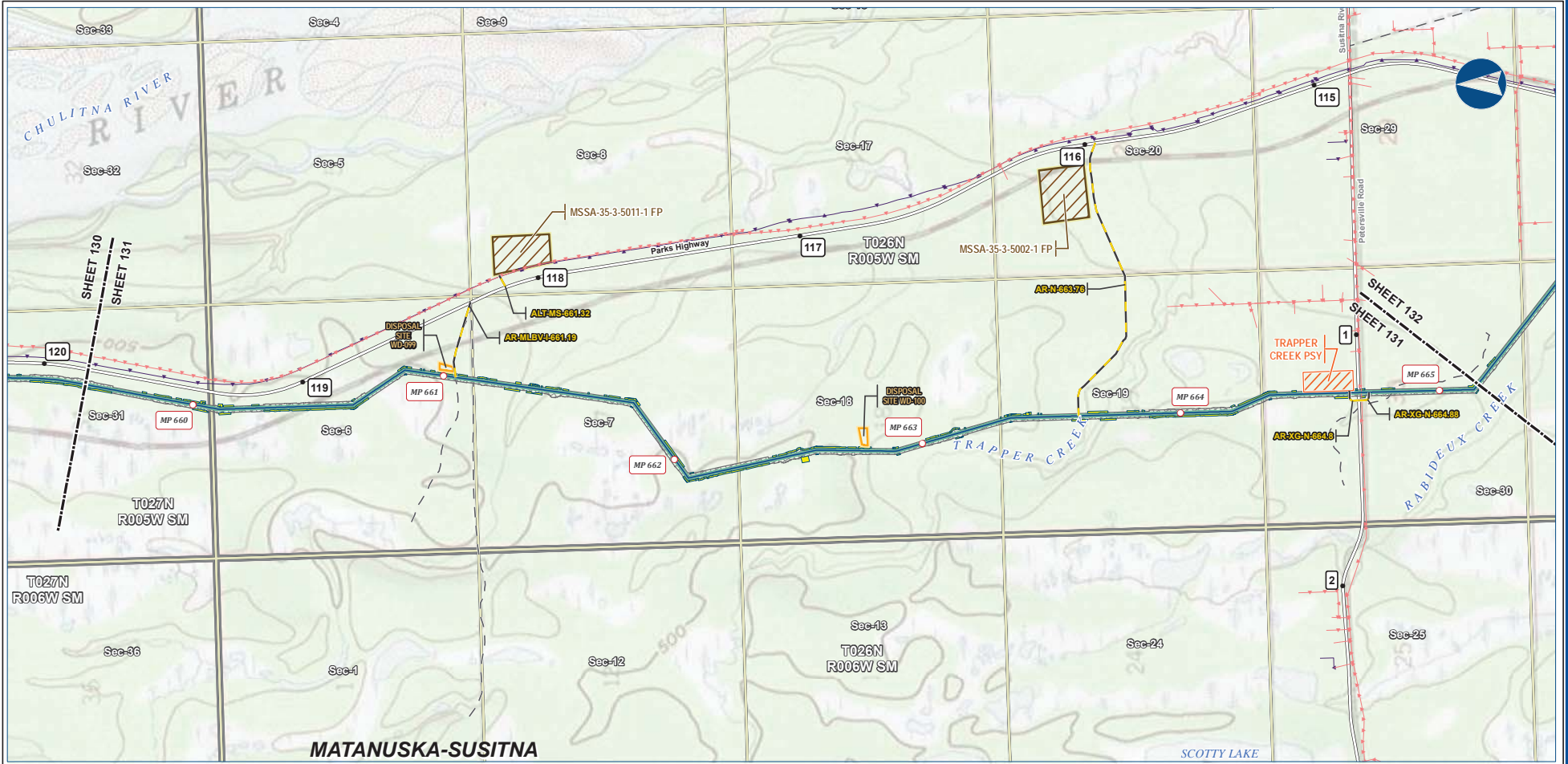
**DISCLAIMER**

The information contained herein is for informational or planning purposes only. It does not nor should it be deemed to be an offer, request or proposals for rights or occupation of any kind. The Alaska LNG Project Participants and their respective officers, employees and agents, make no warranty, implied or otherwise, nor accept any liability, as to the accuracy or completeness of the information contained in these documents, drawings or electronic files. Do not remove or delete this note from document, drawing or electronic file.

Alaska LNG Project

PRELIMINARY FACILITY LOCATIONS - MAINLINE REV C2 ROUTE

ALASKA LNG



B-138



**Legend**

|                      |                                 |                    |
|----------------------|---------------------------------|--------------------|
| Mainline Pipeline    | Permanent ROW                   | Existing Roads     |
| Access Road - Gravel | Construction ROW                | Off Road Trails    |
|                      | ATWS                            | Buried Cable       |
|                      | Pipe Storage Yard (PSY)         | Overhead Powerline |
|                      | Disposal Site                   | Section            |
|                      | Material Site Study Area (MSSA) | Township           |

**ALASKA LNG PROJECT**  
Preliminary Facility Locations  
Mainline Rev C2 Route

|                    |                   |             |                                       |
|--------------------|-------------------|-------------|---------------------------------------|
| BOROUGH:           | MATANUSKA-SUSITNA | DRAWN BY:   | AGDC                                  |
| STATE:             | ALASKA            | CHECKED BY: |                                       |
| REV. NO.:          | REVISION          | DATE        |                                       |
| A                  | ISSUED FOR REVIEW | 2017-03-10  |                                       |
| <b>PRELIMINARY</b> |                   |             |                                       |
| 1:24,000           |                   |             |                                       |
| DATE:              | 2017-03-10        | PROJECTION: | NAD83 NSRS2007 ALASKAZONE4 FTUS 54392 |

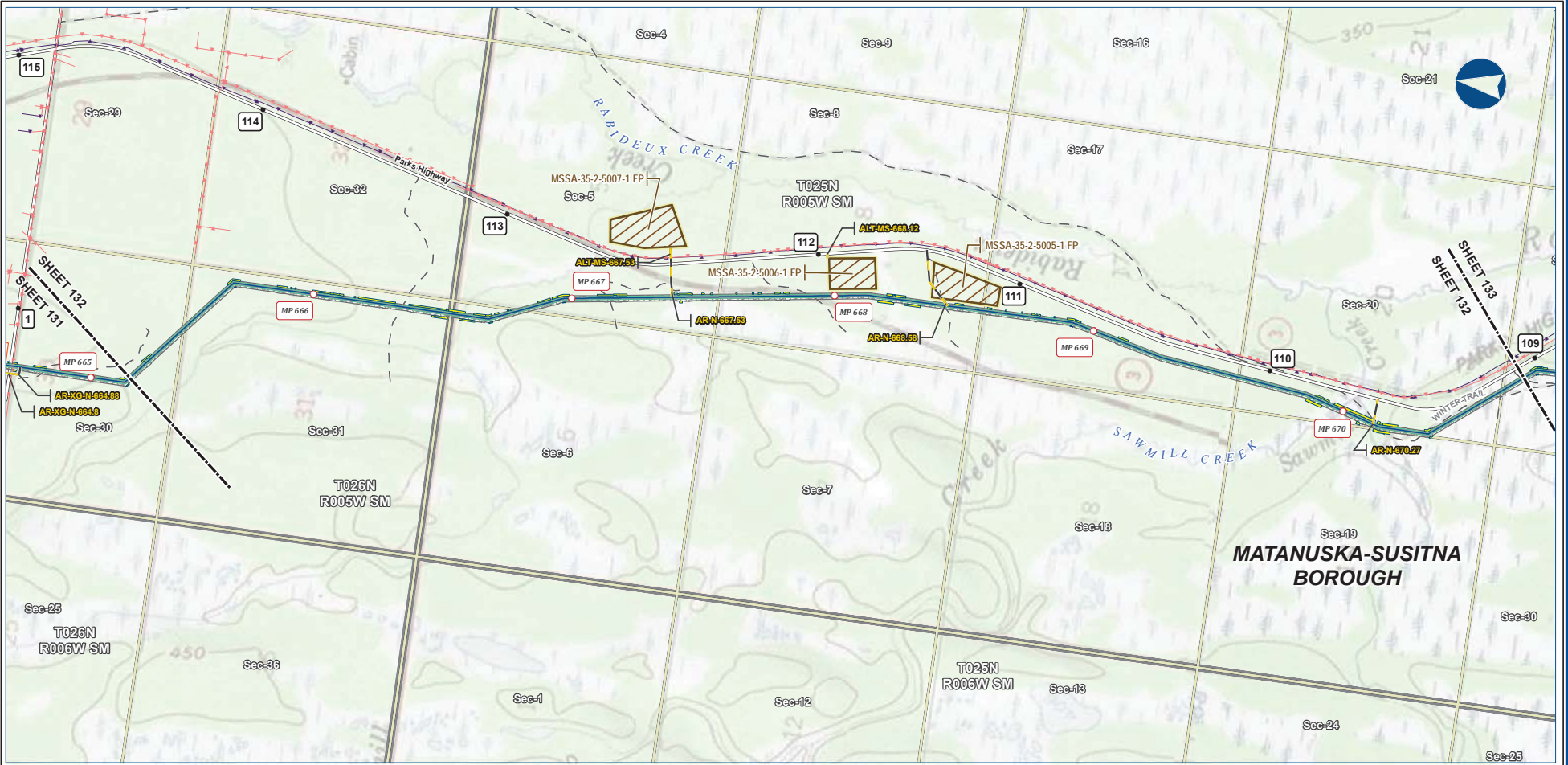
**DISCLAIMER**

The information contained herein is for informational or planning purposes only. It does not nor should it be deemed to be an offer, request or proposals for rights or occupation of any kind. The Alaska LNG Project Participants and their respective officers, employees and agents, make no warranty, implied or otherwise, nor accept any liability, as to the accuracy or completeness of the information contained in these documents, drawings or electronic files. Do not remove or delete this note from document, drawing or electronic file.

Alaska LNG Project

PRELIMINARY FACILITY LOCATIONS - MAINLINE REV C2 ROUTE

ALASKA LNG



B-139



| Legend               |                                 | EXISTING FEATURES |                    |
|----------------------|---------------------------------|-------------------|--------------------|
| Mainline Pipeline    | Permanent ROW                   | Existing Roads    | Off Road Trails    |
| Construction ROW     | ATWS                            | Buried Cable      | Overhead Powerline |
| Access Road - Gravel | Pipe Storage Yard (PSY)         | Section           | Township           |
|                      | Material Site Study Area (MSSA) |                   |                    |

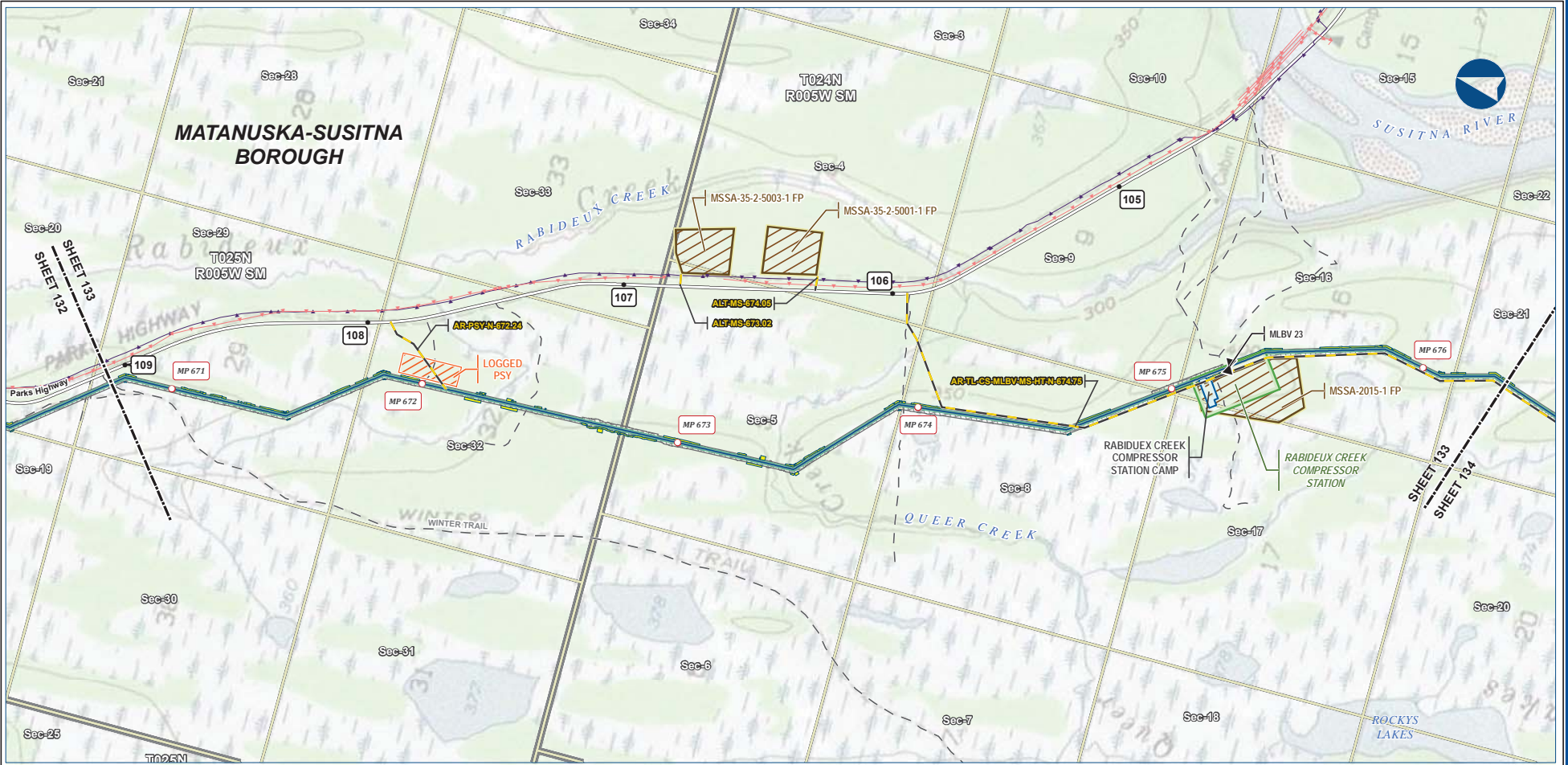
| ALASKA LNG PROJECT             |                   |             |                                       |
|--------------------------------|-------------------|-------------|---------------------------------------|
| Preliminary Facility Locations |                   |             |                                       |
| Mainline Rev C2 Route          |                   |             |                                       |
| BOROUGH:                       | MATANUSKA-SUSITNA | DRAWN BY:   | AGDC                                  |
| STATE:                         | ALASKA            | CHECKED BY: |                                       |
| REV. NO.:                      | REVISION          | DATE        |                                       |
| A                              | ISSUED FOR REVIEW | 2017-03-10  |                                       |
| <b>PRELIMINARY</b>             |                   |             |                                       |
| 1:24,000                       |                   |             |                                       |
| 0 1/4 1/2 3/4 1 MILE           |                   |             |                                       |
| DATE:                          | 2017-03-10        | PROJECTION: | NAD83 NSRS2007 ALASKAZONE4 FTUS 54392 |

**DISCLAIMER**

The information contained herein is for informational or planning purposes only. It does not nor should it be deemed to be an offer, request or proposals for rights or occupation of any kind. The Alaska LNG Project Participants and their respective officers, employees and agents, make no warranty, implied or otherwise, nor accept any liability, as to the accuracy or completeness of the information contained in these documents, drawings or electronic files. Do not remove or delete this note from document, drawing or electronic file.

Alaska LNG Project

PRELIMINARY FACILITY LOCATIONS - MAINLINE REV C2 ROUTE



B-140



**Legend**

**PIPELINE**

- Mainline Pipeline
- Construction ROW
- Access Road - Gravel
- Mainline Blockvale

**EXISTING FEATURES**

- Existing Roads
- Off Road Trails
- Buried Cable
- Overhead Powerline
- Section
- Township

**PERMANENT AND CONSTRUCTION ROW**

- Permanent ROW
- Construction ROW
- ATWS
- Compressor Station
- Camp
- Pipe Storage Yard (PSY)
- Material Site Study Area (MSSA)

**ALASKA LNG PROJECT**  
Preliminary Facility Locations  
Mainline Rev C2 Route

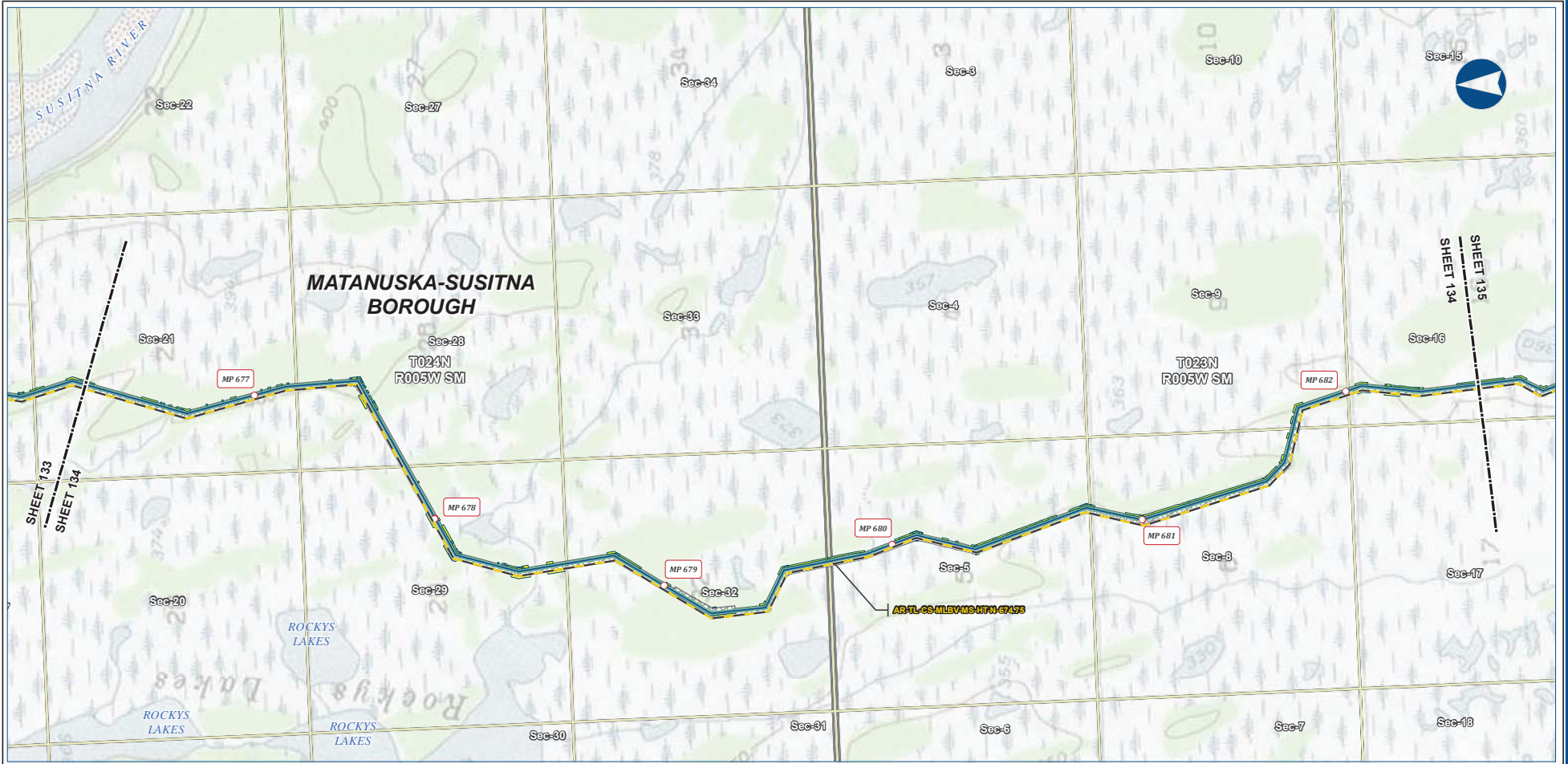
|                    |                   |             |                                       |
|--------------------|-------------------|-------------|---------------------------------------|
| BOROUGH:           | MATANUSKA-SUSITNA | DRAWN BY:   | AGDC                                  |
| STATE:             | ALASKA            | CHECKED BY: |                                       |
| REV. NO.:          | REVISION          | DATE        |                                       |
| A                  | ISSUED FOR REVIEW | 2017-03-10  |                                       |
| <b>PRELIMINARY</b> |                   |             |                                       |
| 1:24,000           |                   |             |                                       |
| DATE:              | 2017-03-10        | PRODUCTION: | NAD83 NSRS2007 ALASKAZONE4 FTUS 54392 |

**DISCLAIMER**

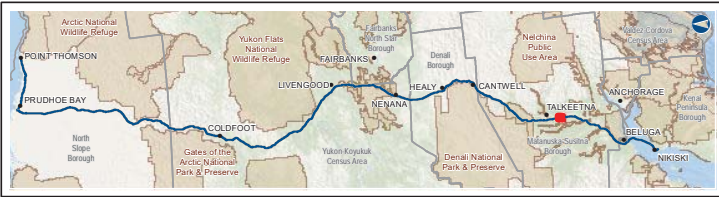
The information contained herein is for informational or planning purposes only. It does not nor should it be deemed to be an offer, request or proposals for rights or occupation of any kind. The Alaska LNG Project Participants and their respective officers, employees and agents, make no warranty, implied or otherwise, nor accept any liability, as to the accuracy or completeness of the information contained in these documents, drawings or electronic files. Do not remove or delete this note from document, drawing or electronic file.

DWG: RR1\_APPENDIX\_A1\_MAINLINE\_TOPO\_REV\_C2\_CL SHEET: 133





B-141



**Legend**

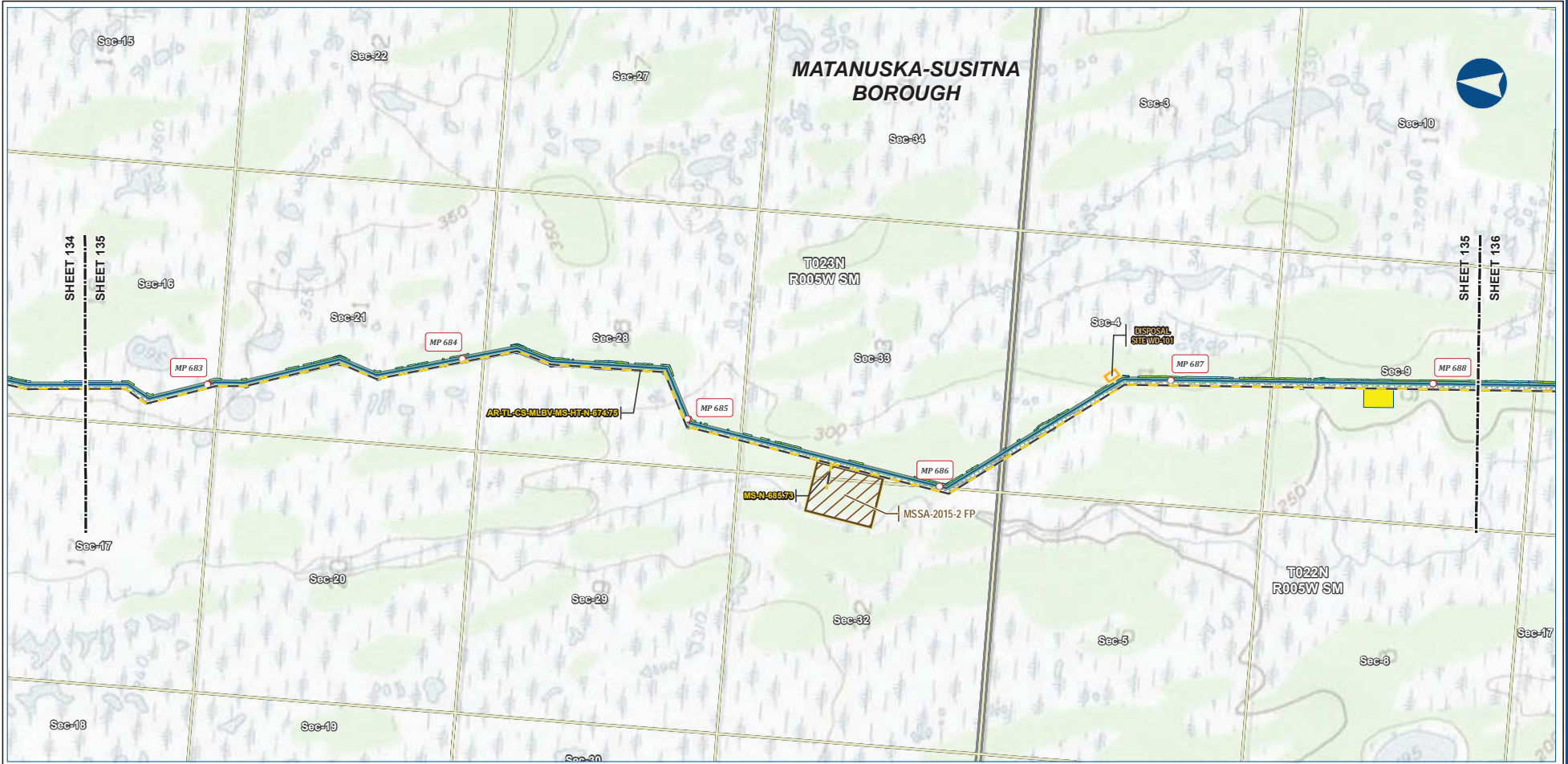
|                      |                  |                |
|----------------------|------------------|----------------|
| Mainline Pipeline    | Permanent ROW    | Existing Roads |
| Access Road - Gravel | Construction ROW | Section        |
|                      | ATWS             | Township       |

**ALASKA LNG PROJECT**  
Preliminary Facility Locations  
Mainline Rev C2 Route

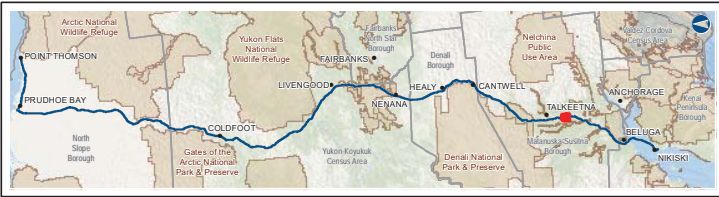
|                    |                   |             |                                       |
|--------------------|-------------------|-------------|---------------------------------------|
| BOROUGH:           | MATANUSKA-SUSITNA | DRAWN BY:   | AGDC                                  |
| STATE:             | ALASKA            | CHECKED BY: |                                       |
| REV. NO.:          | A                 | REVISION    | ISSUED FOR REVIEW                     |
|                    |                   | DATE        | 2017-03-10                            |
| <b>PRELIMINARY</b> |                   |             |                                       |
| 1:24,000           |                   |             |                                       |
|                    |                   |             |                                       |
| DATE:              | 2017-03-10        | PROJECTION: | NAD83 NSRS2007 ALASKAZONE4 FTUS 54392 |

**DISCLAIMER**

The information contained herein is for informational or planning purposes only. It does not nor should it be deemed to be an offer, request or proposals for rights or occupation of any kind. The Alaska LNG Project Participants and their respective officers, employees and agents, make no warranty, implied or otherwise, nor accept any liability, as to the accuracy or completeness of the information contained in these documents, drawings or electronic files. Do not remove or delete this note from document, drawing or electronic file.



B-142



**Legend**

|                      |                                 |                |
|----------------------|---------------------------------|----------------|
| <b>PIPELINE</b>      | Permanent ROW                   | Existing Roads |
| Mainline Pipeline    | Construction ROW                | Section        |
| Access Road - Gravel | ATWS                            | Township       |
|                      | Disposal Site                   |                |
|                      | Material Site Study Area (MSSA) |                |

**ALASKA LNG PROJECT**  
Preliminary Facility Locations  
Mainline Rev C2 Route

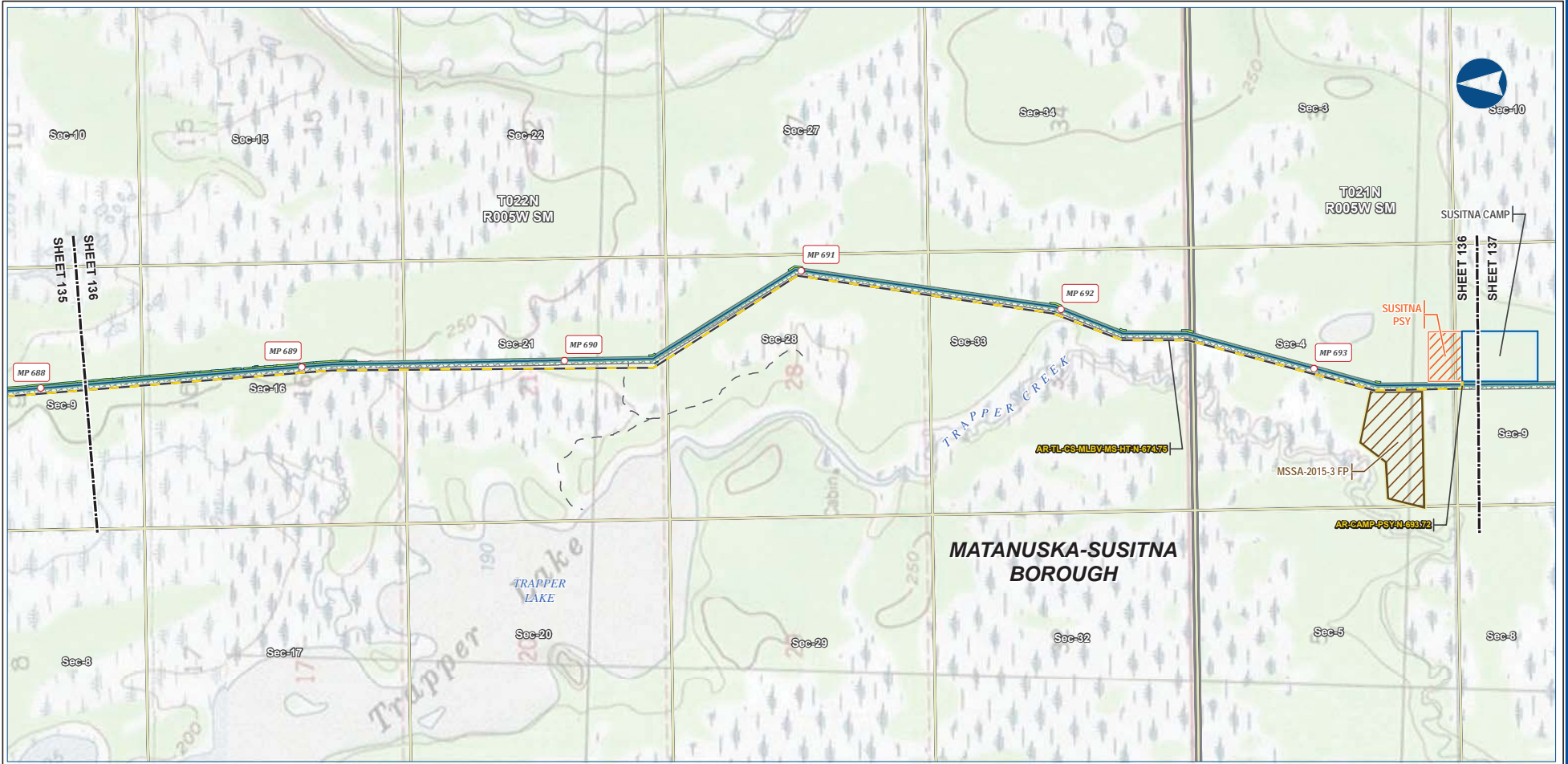
|                    |                   |             |                                       |
|--------------------|-------------------|-------------|---------------------------------------|
| BOROUGH:           | MATANUSKA-SUSITNA | DRAWN BY:   | AGDC                                  |
| STATE:             | ALASKA            | CHECKED BY: |                                       |
| REV. NO.:          | REVISION          | DATE        |                                       |
| A                  | ISSUED FOR REVIEW | 2017-03-10  |                                       |
| <b>PRELIMINARY</b> |                   |             |                                       |
| 1:24,000           |                   |             |                                       |
| DATE:              | 2017-03-10        | PROJECTION: | NAD83 NRSR2007 ALASKAZONE4 FTUS 54392 |

**DISCLAIMER**

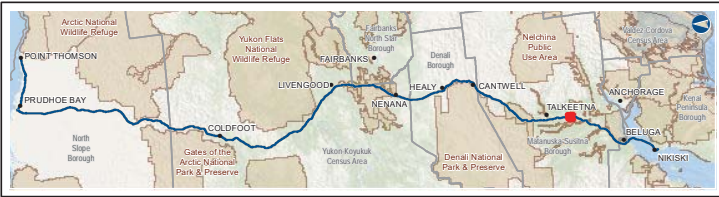
The information contained herein is for informational or planning purposes only. It does not nor should it be deemed to be an offer, request or proposals for rights or occupation of any kind. The Alaska LNG Project Participants and their respective officers, employees and agents, make no warranty, implied or otherwise, nor accept any liability, as to the accuracy or completeness of the information contained in these documents, drawings or electronic files. Do not remove or delete this note from document, drawing or electronic file.

PRELIMINARY FACILITY LOCATIONS - MAINLINE REV C2 ROUTE

ALASKA LNG



B-143



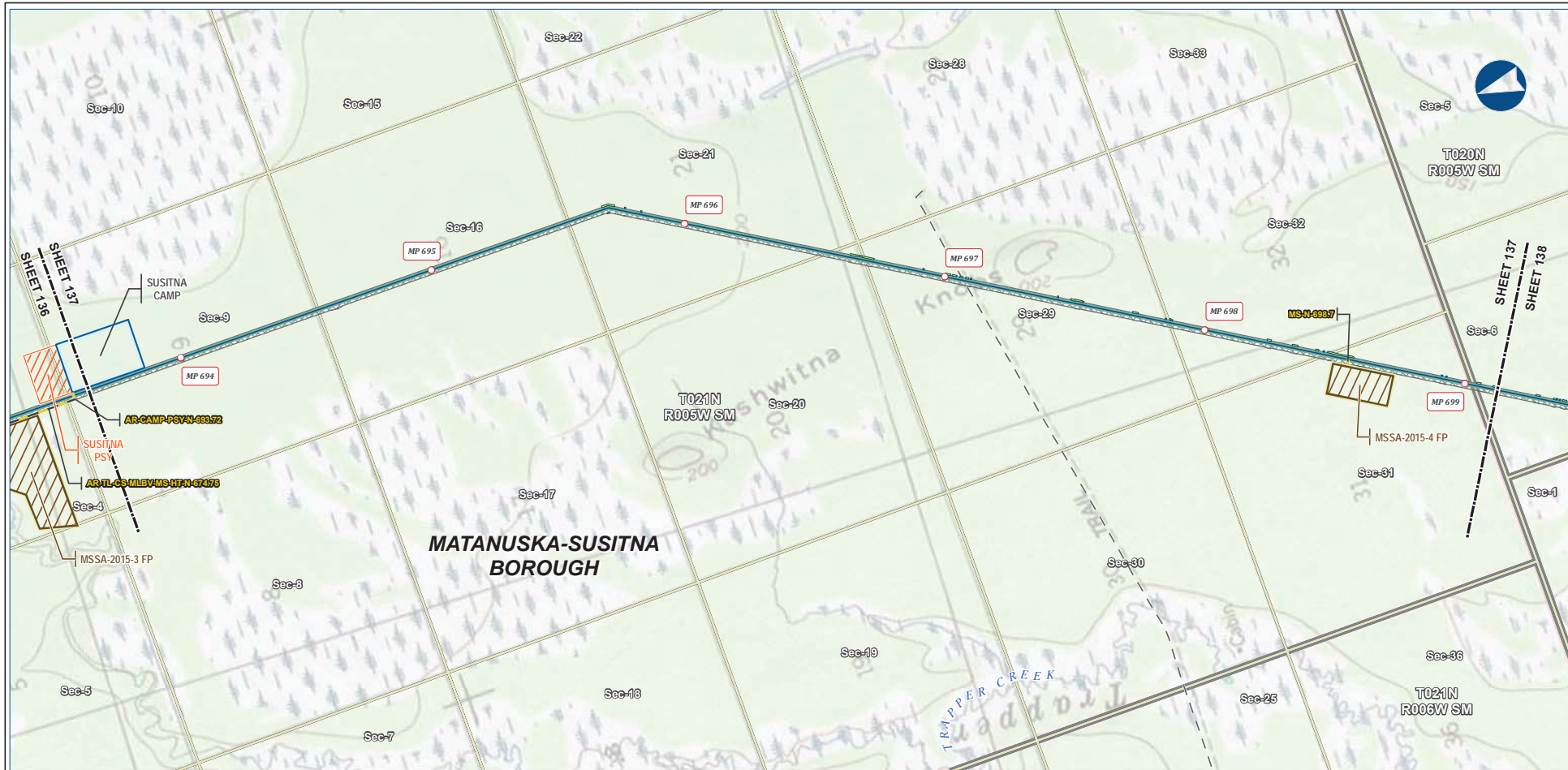
| Legend                  |                                 | EXISTING FEATURES        |                 |
|-------------------------|---------------------------------|--------------------------|-----------------|
| Mainline Pipeline       | Permanent ROW                   | Existing Roads           | Off Road Trails |
| Access Road - Gravel    | Construction ROW                | Off Road Public Use Area | Township        |
| Off ROW Camp            | ATWS                            |                          |                 |
| Pipe Storage Yard (PSY) | Material Site Study Area (MSSA) |                          |                 |

| ALASKA LNG PROJECT<br>Preliminary Facility Locations<br>Mainline Rev C2 Route |                   |             |                                       |
|---|-------------------|-------------|---------------------------------------|
| BOROUGH:  | MATANUSKA-SUSITNA | DRAWN BY:   | AGDC                                  |
| STATE:  | ALASKA            | CHECKED BY: |                                       |
| REV. NO.:   | REVISION          | DATE        |                                       |
| A   | ISSUED FOR REVIEW | 2017-03-10  |                                       |
| <b>PRELIMINARY</b>  |                   |             |                                       |
| 1:24,000  |                   |             |                                       |
|   |                   |             |                                       |
| DATE:   | 2017-03-10        | PROJECTION: | NAD83 NSRS2007 ALASKAZONE4 FTUS 54392 |

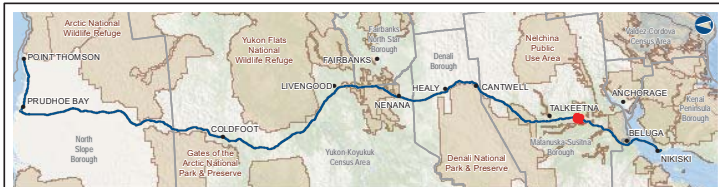
**DISCLAIMER**

The information contained herein is for informational or planning purposes only. It does not nor should it be deemed to be an offer, request or proposals for rights or occupation of any kind. The Alaska LNG Project Participants and their respective officers, employees and agents, make no warranty, implied or otherwise, nor accept any liability, as to the accuracy or completeness of the information contained in these documents, drawings or electronic files. Do not remove or delete this note from document, drawing or electronic file.

Alaska LNG Project



B-144

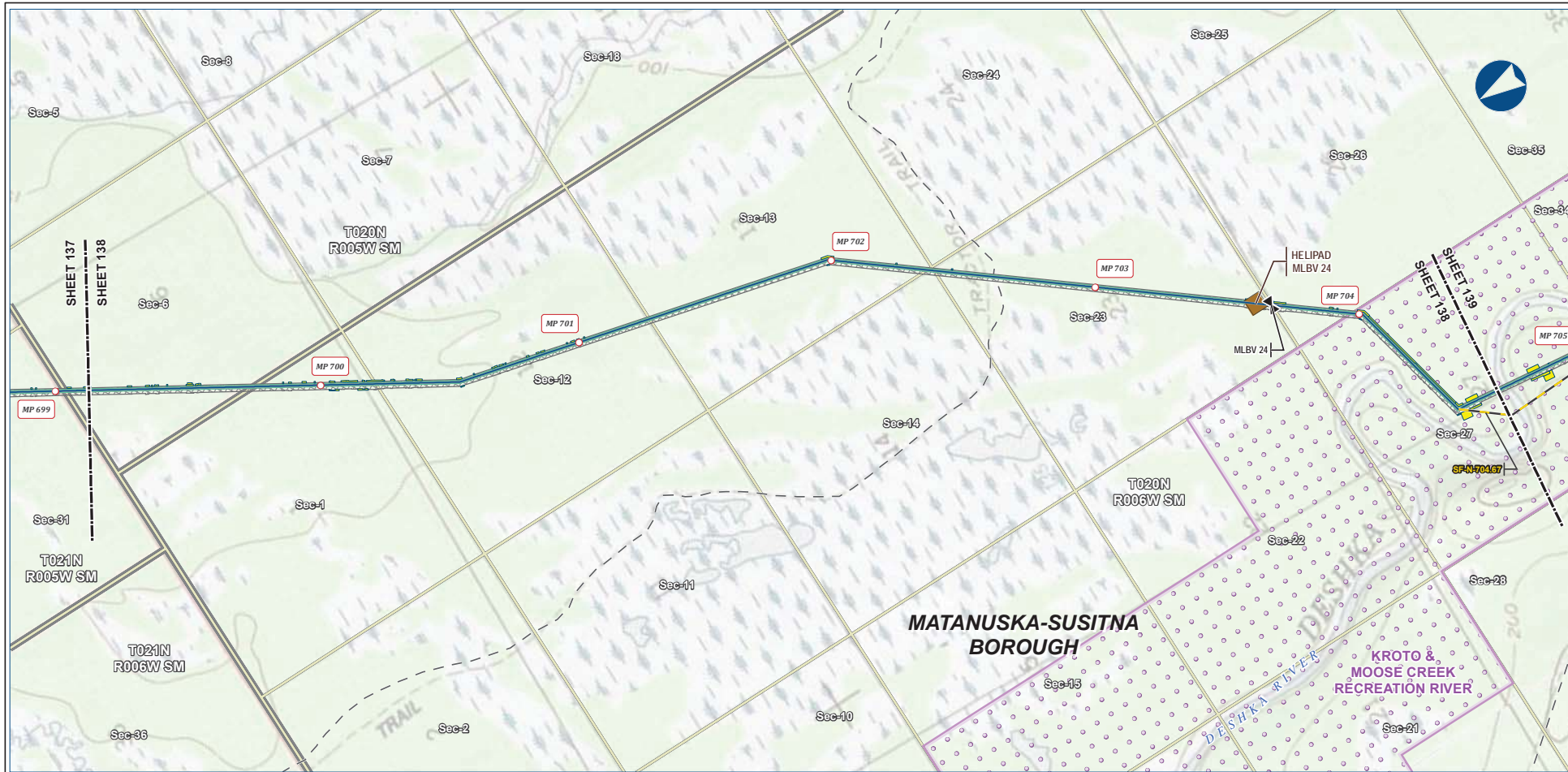


| Legend                  |                                 | EXISTING FEATURES |                 |
|-------------------------|---------------------------------|-------------------|-----------------|
| Mainline Pipeline       | Permanent ROW                   | Existing Roads    | Off Road Trails |
| Access Road - Gravel    | Construction ROW                | Off Road Trails   | Township        |
| Off ROW Camp            | ATWS                            | Section           |                 |
| Pipe Storage Yard (PSY) | Material Site Study Area (MSSA) |                   |                 |

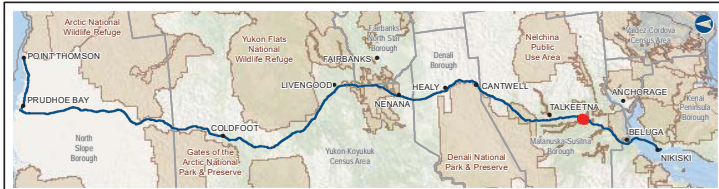
| ALASKA LNG PROJECT<br>Preliminary Facility Locations<br>Mainline Rev C2 Route |   |  |            |
|---|---|--|------------|
| BOROUGH:  | MATANUSKA-SUSITNA                                 | DRAWN BY:                                    | AGDC       |
| STATE:  | ALASKA  | CHECKED BY:                                  |            |
| REV. NO.:   | REVISION  | DATE   |            |
| A   | ISSUED FOR REVIEW                                 | 2017-03-10                                   |            |
| <b>PRELIMINARY</b>  |   |  |            |
| 1:24,000  |   |  |            |
| DATE: 2017-03-10  | PROJECTION: NAD83 NSRS2007 ALASKAZONE4 FTUS 54392 | DWG: RR1_APPENDIX_A1_MAINLINE_TOPO_REV_C2_CL | SHEET: 137 |

**DISCLAIMER**

The information contained herein is for informational or planning purposes only. It does not nor should it be deemed to be an offer, request or proposals for rights or occupation of any kind. The Alaska LNG Project Participants and their respective officers, employees and agents, make no warranty, implied or otherwise, nor accept any liability, as to the accuracy or completeness of the information contained in these documents, drawings or electronic files. Do not remove or delete this note from document, drawing or electronic file.



B-145



**Legend**

|                      |                  |                    |
|----------------------|------------------|--------------------|
| Mainline Pipeline    | Permanent ROW    | Existing Roads     |
| Access Road - Gravel | Construction ROW | Off Road Trails    |
| Mainline Blockvalve  | ATWS             | Conservation Lands |
| Helipad              |                  | Section            |
|                      |                  | Township           |

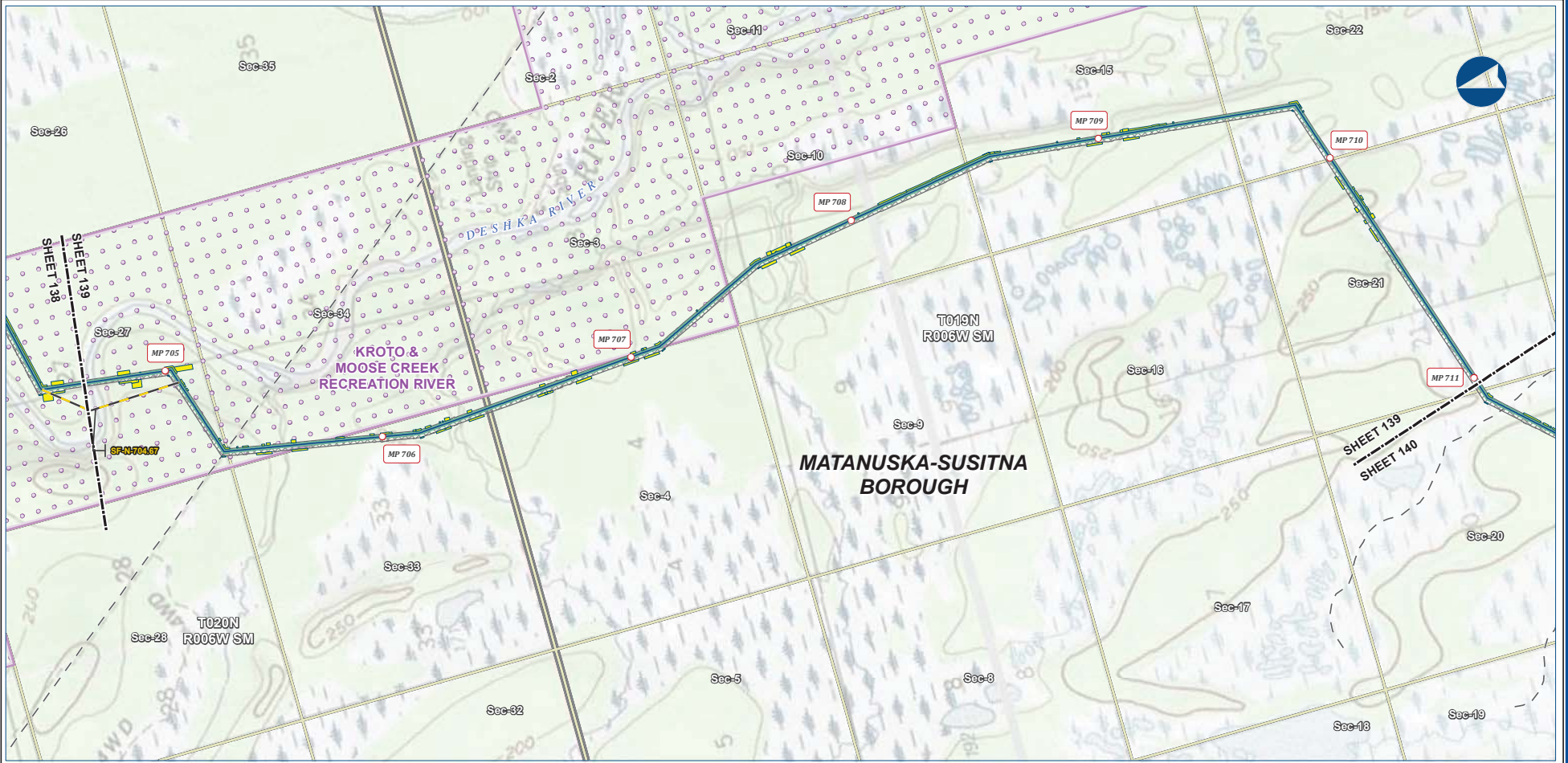
**ALASKA LNG PROJECT**  
Preliminary Facility Locations  
Mainline Rev C2 Route

|                    |                   |             |                                       |
|--------------------|-------------------|-------------|---------------------------------------|
| BOROUGH:           | MATANUSKA-SUSITNA | DRAWN BY:   | AGDC                                  |
| STATE:             | ALASKA            | CHECKED BY: |                                       |
| REV. NO.:          | REVISION          | DATE        |                                       |
| A                  | ISSUED FOR REVIEW | 2017-03-10  |                                       |
| <b>PRELIMINARY</b> |                   |             |                                       |
| 1:24,000           |                   |             |                                       |
| DATE:              | 2017-03-10        | PROJECTION: | NAD83 NRSR2007 ALASKAZONE4 FTUS S4392 |

**DISCLAIMER**

The information contained herein is for informational or planning purposes only. It does not nor should it be deemed to be an offer, request or proposals for rights or occupation of any kind. The Alaska LNG Project Participants and their respective officers, employees and agents, make no warranty, implied or otherwise, nor accept any liability, as to the accuracy or completeness of the information contained in these documents, drawings or electronic files. Do not remove or delete this note from document, drawing or electronic file.

PRELIMINARY FACILITY LOCATIONS - MAINLINE REV C2 ROUTE



B-146



Alaska LNG Project

**Legend**

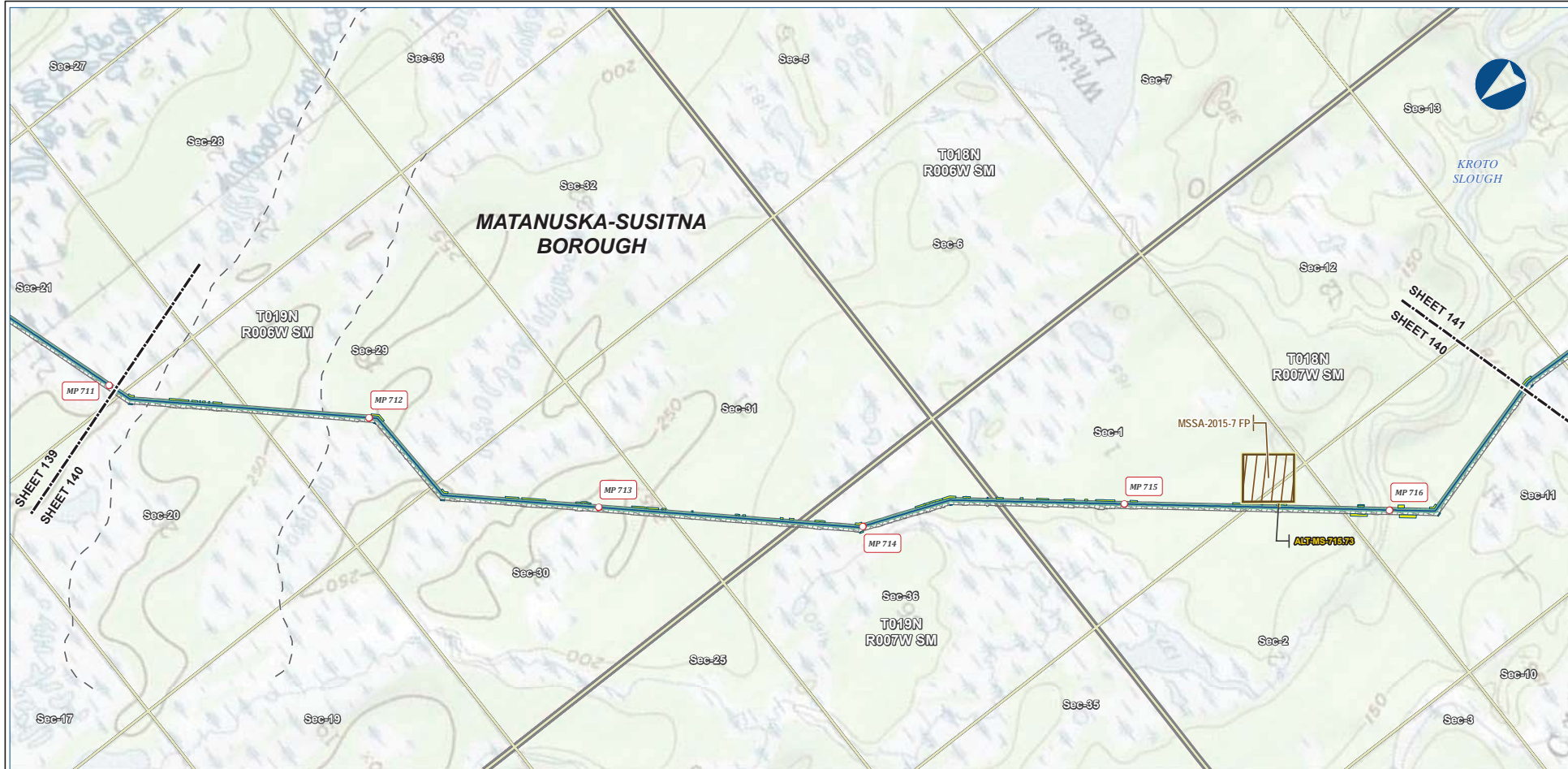
|                      |                  |                    |
|----------------------|------------------|--------------------|
| Mainline Pipeline    | Permanent ROW    | Existing Roads     |
| Access Road - Gravel | Construction ROW | Off Road Trails    |
|                      | ATWS             | Conservation Lands |
|                      |                  | Section            |
|                      |                  | Township           |

**ALASKA LNG PROJECT**  
Preliminary Facility Locations  
Mainline Rev C2 Route

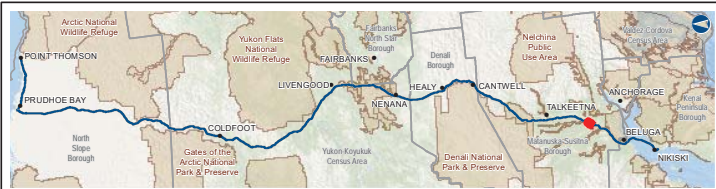
|                                   |  |
|-----------------------------------|--|
| <b>BOROUGH:</b> MATANUSKA-SUSITNA | <b>DRAWN BY:</b> AGDC                                    |
| <b>STATE:</b> ALASKA              | <b>CHECKED BY:</b>                                       |
| <b>REV. NO.:</b>                  | <b>REVISION</b>  |
| A                                 | ISSUED FOR REVIEW  |
|                                   | <b>DATE</b>  |
|                                   | 2017-03-10   |
| <b>PRELIMINARY</b>                |  |
| 1:24,000                          |  |
| 0 1/4 1/2 3/4 1 Mile              |  |
| <b>DATE:</b> 2017-03-10           | <b>PROJECTION:</b> NAD83 NRSR2007 ALASKAZONE4 FTUS 54392 |

**DISCLAIMER**

The information contained herein is for informational or planning purposes only. It does not nor should it be deemed to be an offer, request or proposals for rights or occupation of any kind. The Alaska LNG Project Participants and their respective officers, employees and agents, make no warranty, implied or otherwise, nor accept any liability, as to the accuracy or completeness of the information contained in these documents, drawings or electronic files. Do not remove or delete this note from document, drawing or electronic file.



B-147



**Legend**

|                      |                                 |                 |
|----------------------|---------------------------------|-----------------|
| Mainline Pipeline    | Permanent ROW                   | Existing Roads  |
| Access Road - Gravel | Construction ROW                | Off Road Trails |
|                      | ATWS                            | Section         |
|                      | Material Site Study Area (MSSA) | Township        |

**ALASKA LNG PROJECT**  
Preliminary Facility Locations  
Mainline Rev C2 Route

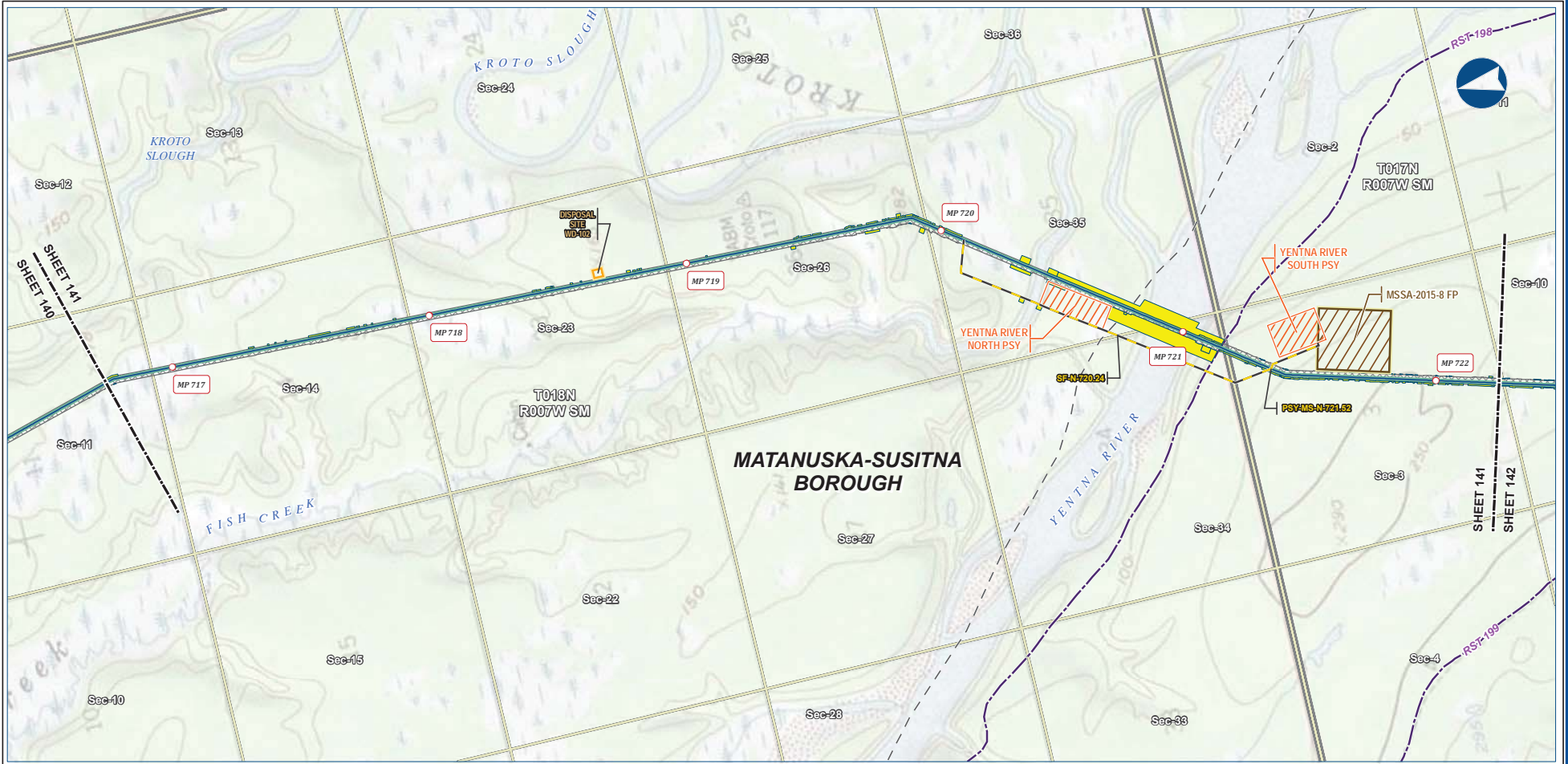
|                    |                   |             |                                       |
|--------------------|-------------------|-------------|---------------------------------------|
| BOROUGH:           | MATANUSKA-SUSITNA | DRAWN BY:   | AGDC                                  |
| STATE:             | ALASKA            | CHECKED BY: |                                       |
| REV. NO.:          | A                 | REVISION    | ISSUED FOR REVIEW                     |
|                    |                   | DATE        | 2017-03-10                            |
| <b>PRELIMINARY</b> |                   |             |                                       |
| 1:24,000           |                   |             |                                       |
| DATE:              | 2017-03-10        | PROJECTION: | NAD83 NRSR2007 ALASKAZONE4 FTUS 54392 |

**DISCLAIMER**

The information contained herein is for informational or planning purposes only. It does not nor should it be deemed to be an offer, request or proposals for rights or occupation of any kind. The Alaska LNG Project Participants and their respective officers, employees and agents, make no warranty, implied or otherwise, nor accept any liability, as to the accuracy or completeness of the information contained in these documents, drawings or electronic files. Do not remove or delete this note from document, drawing or electronic file.

PRELIMINARY FACILITY LOCATIONS - MAINLINE REV C2 ROUTE

ALASKA LNG



B-148



| Legend                          |                  | EXISTING FEATURES |                            |
|---------------------------------|------------------|-------------------|----------------------------|
| Mainline Pipeline               | Permanent ROW    | Existing Roads    | Revised Statute 2477 Trail |
| Access Road - Gravel            | Construction ROW | Off Road Trails   | Section                    |
| Pipe Storage Yard (PSY)         | ATWS             | Township          |                            |
| Disposal Site                   | Disposal Site    |                   |                            |
| Material Site Study Area (MSSA) |                  |                   |                            |

| ALASKA LNG PROJECT<br>Preliminary Facility Locations<br>Mainline Rev C2 Route |                   |             |                                       |
|---|-------------------|-------------|---------------------------------------|
| BOROUGH:  | MATANUSKA-SUSITNA | DRAWN BY:   | AGDC                                  |
| STATE:  | ALASKA            | CHECKED BY: |                                       |
| REV. NO.:   | REVISION          | DATE        |                                       |
| A   | ISSUED FOR REVIEW | 2017-03-10  |                                       |
| <b>PRELIMINARY</b>  |                   |             |                                       |
| 1:24,000  |                   |             |                                       |
|   |                   |             |                                       |
| DATE:   | 2017-03-10        | PROJECTION: | NAD83 NSRS2007 ALASKAZONE4 FTUS 54392 |

**DISCLAIMER**

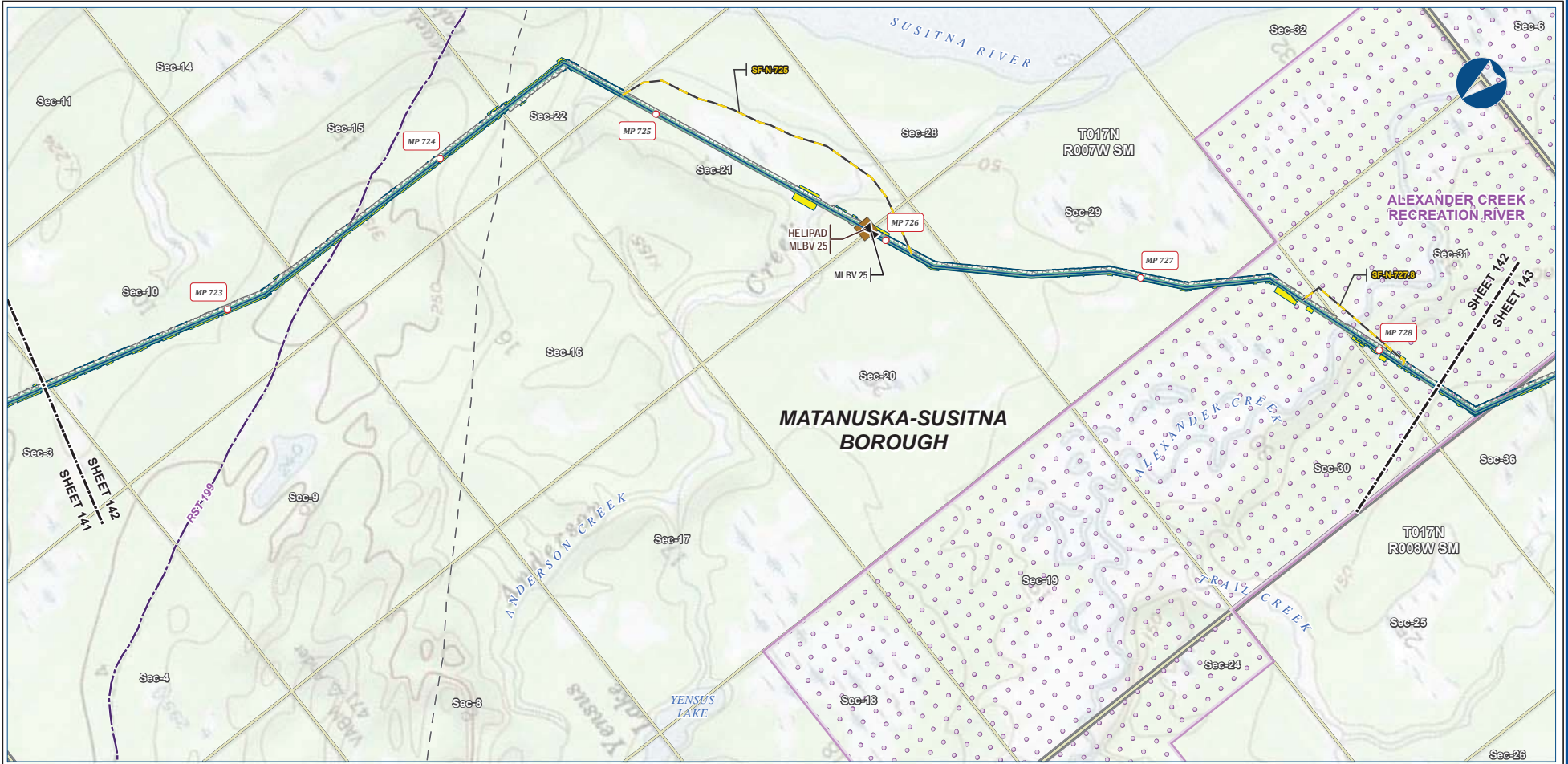
The information contained herein is for informational or planning purposes only. It does not nor should it be deemed to be an offer, request or proposals for rights or occupation of any kind. The Alaska LNG Project Participants and their respective officers, employees and agents, make no warranty, implied or otherwise, nor accept any liability, as to the accuracy or completeness of the information contained in these documents, drawings or electronic files. Do not remove or delete this note from document, drawing or electronic file.

Alaska LNG Project

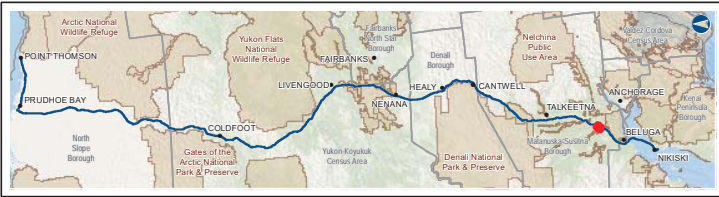


PRELIMINARY FACILITY LOCATIONS - MAINLINE REV C2 ROUTE

ALASKA LNG



B-149



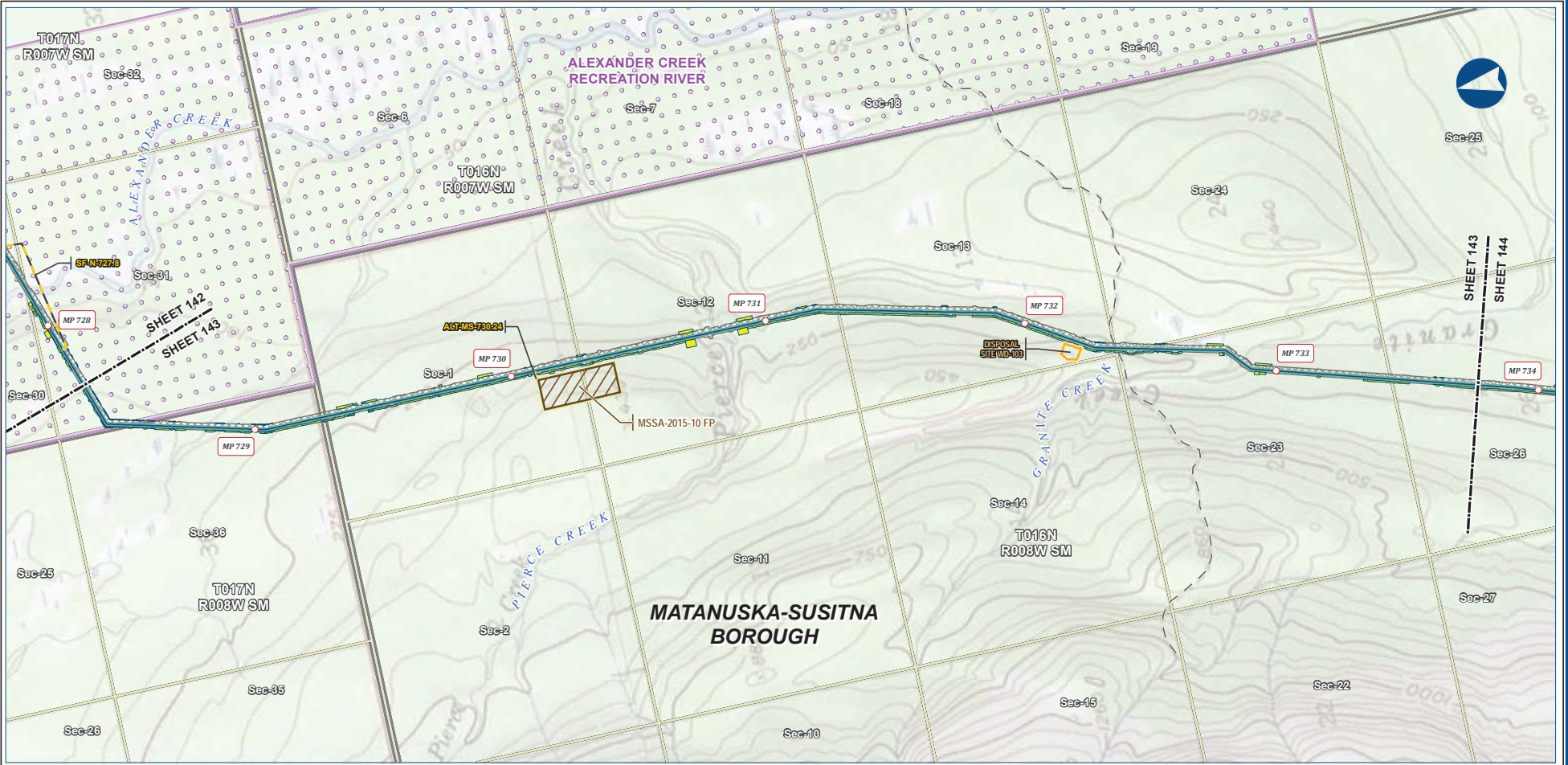
| PIPELINE |                      | EXISTING FEATURES |                            |
|----------|----------------------|-------------------|----------------------------|
|          | Mainline Pipeline    |                   | Permanent ROW              |
|          | Construction ROW     |                   | Existing Roads             |
|          | Access Road - Gravel |                   | Revised Statute 2477 Trail |
|          | Mainline Blockvalve  |                   | Off Road Trails            |
|          | Helipad              |                   | Conservation Lands         |
|          |                      |                   | Section                    |
|          |                      |                   | Township                   |

| ALASKA LNG PROJECT<br>Preliminary Facility Locations<br>Mainline Rev C2 Route |                   |             |                                       |
|---|-------------------|-------------|---------------------------------------|
| BOROUGH:  | MATANUSKA-SUSITNA | DRAWN BY:   | AGDC                                  |
| STATE:  | ALASKA            | CHECKED BY: |                                       |
| REV. NO.:   | REVISION          | DATE        |                                       |
| A   | ISSUED FOR REVIEW | 2017-03-10  |                                       |
| <b>PRELIMINARY</b>  |                   |             |                                       |
| 1:24,000  |                   |             |                                       |
| DATE:   | 2017-03-10        | PROJECTION: | NAD83 NRSR2007 ALASKAZONE4 FTUS S4392 |

**DISCLAIMER**

The information contained herein is for informational or planning purposes only. It does not nor should it be deemed to be an offer, request or proposals for rights or occupation of any kind. The Alaska LNG Project Participants and their respective officers, employees and agents, make no warranty, implied or otherwise, nor accept any liability, as to the accuracy or completeness of the information contained in these documents, drawings or electronic files. Do not remove or delete this note from document, drawing or electronic file.

Alaska LNG Project



B-150



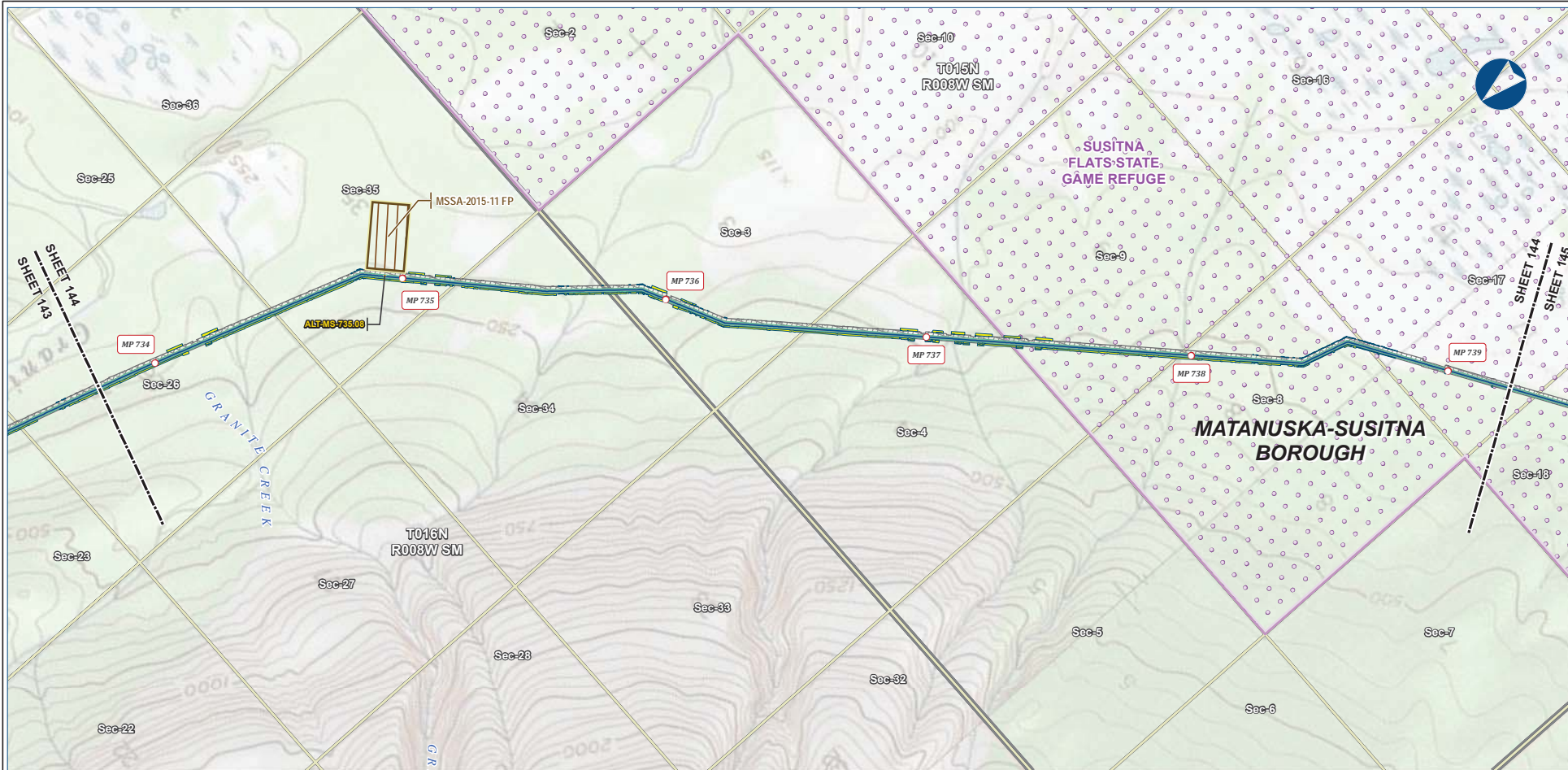
| Legend |                                 | EXISTING FEATURES |                    |
|--------|---------------------------------|-------------------|--------------------|
|        | Mainline Pipeline               |                   | Existing Roads     |
|        | Construction ROW                |                   | Off Road Trails    |
|        | Access Road - Gravel            |                   | Conservation Lands |
|        | Disposal Site                   |                   | Section            |
|        | Material Site Study Area (MSSA) |                   | Township           |
|        | Permanent ROW                   |                   |                    |
|        | ATWS                            |                   |                    |

| ALASKA LNG PROJECT<br>Preliminary Facility Locations<br>Mainline Rev C2 Route |                   |             |                                       |
|---|-------------------|-------------|---------------------------------------|
| BOROUGH:  | MATANUSKA-SUSITNA | DRAWN BY:   | AGDC                                  |
| STATE:  | ALASKA            | CHECKED BY: |                                       |
| REV. NO.:   | REVISION          | DATE        |                                       |
| A   | ISSUED FOR REVIEW | 2017-03-10  |                                       |
| <b>PRELIMINARY</b>  |                   |             |                                       |
| 1:24,000  |                   |             |                                       |
| DATE:   | 2017-03-10        | PROJECTION: | NAD83 NRSR2007 ALASKAZONE4 FTUS 54392 |

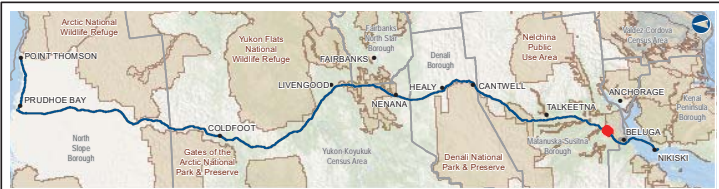
**DISCLAIMER**  
The information contained herein is for informational or planning purposes only. It does not nor should it be deemed to be an offer, request or proposals for rights or occupation of any kind. The Alaska LNG Project Participants and their respective officers, employees and agents, make no warranty, implied or otherwise, nor accept any liability, as to the accuracy or completeness of the information contained in these documents, drawings or electronic files. Do not remove or delete this note from document, drawing or electronic file.

PRELIMINARY FACILITY LOCATIONS - MAINLINE REV C2 ROUTE

ALASKA LNG



B-151



**Legend**

|                      |                                 |                    |
|----------------------|---------------------------------|--------------------|
| Mainline Pipeline    | Permanent ROW                   | Existing Roads     |
| Access Road - Gravel | Construction ROW                | Conservation Lands |
|                      | ATWS                            | Section            |
|                      | Material Site Study Area (MSSA) | Township           |

**ALASKA LNG PROJECT**  
Preliminary Facility Locations  
Mainline Rev C2 Route

|                    |                   |             |                                       |
|--------------------|-------------------|-------------|---------------------------------------|
| BOROUGH:           | MATANUSKA-SUSITNA | DRAWN BY:   | AGDC                                  |
| STATE:             | ALASKA            | CHECKED BY: |                                       |
| REV. NO.:          | REVISION          | DATE        |                                       |
| A                  | ISSUED FOR REVIEW | 2017-03-10  |                                       |
| <b>PRELIMINARY</b> |                   |             |                                       |
| 1:24,000           |                   |             |                                       |
|                    |                   |             |                                       |
| DATE:              | 2017-03-10        | PROJECTION: | NAD83 NSRS2007 ALASKAZONE4 FTUS 54392 |

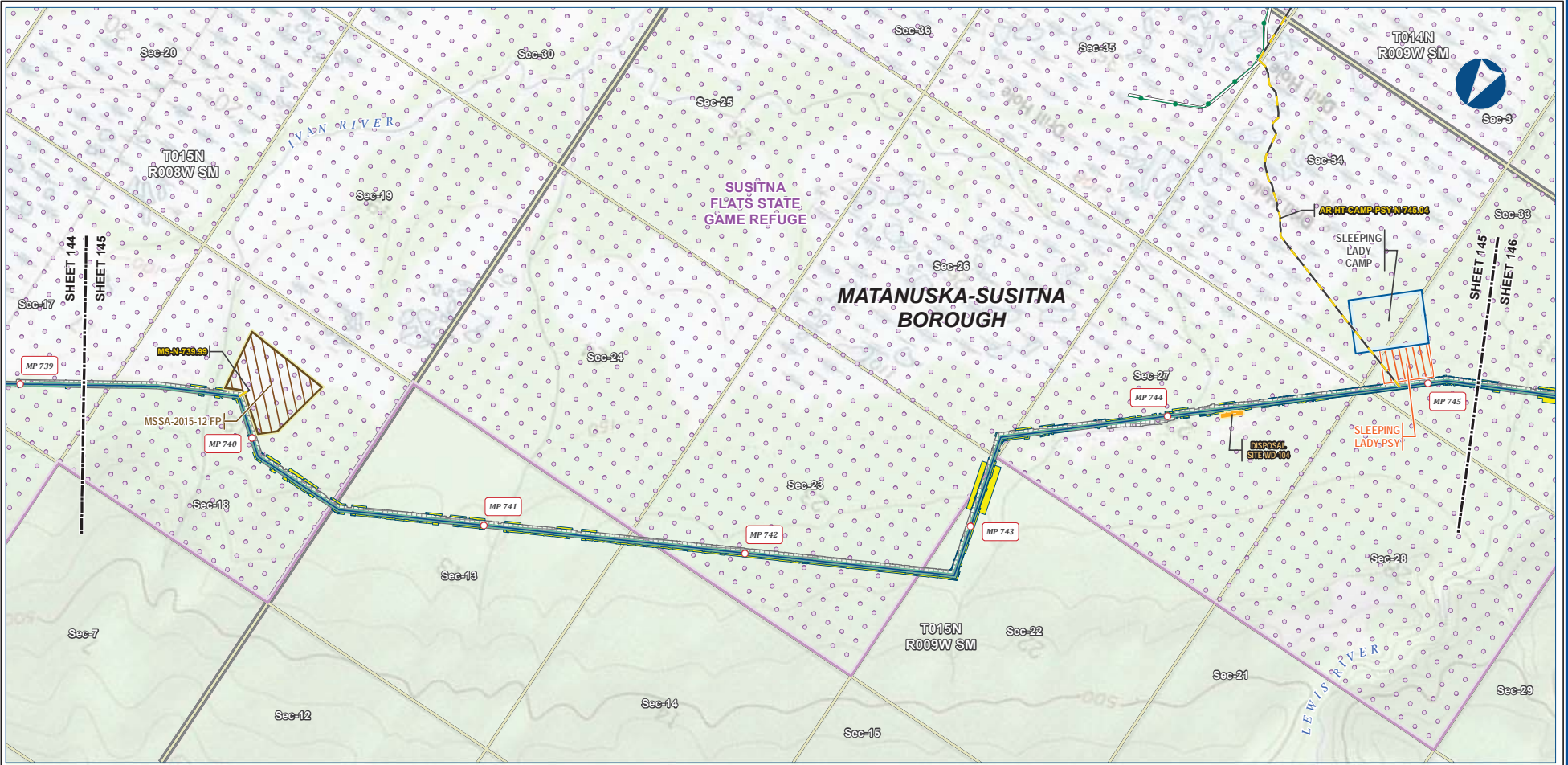
**DISCLAIMER**

The information contained herein is for informational or planning purposes only. It does not nor should it be deemed to be an offer, request or proposals for rights or occupation of any kind. The Alaska LNG Project Participants and their respective officers, employees and agents, make no warranty, implied or otherwise, nor accept any liability, as to the accuracy or completeness of the information contained in these documents, drawings or electronic files. Do not remove or delete this note from document, drawing or electronic file.

Alaska LNG Project

PRELIMINARY FACILITY LOCATIONS - MAINLINE REV C2 ROUTE

ALASKA LNG



B-152



| Legend               |                                 | EXISTING FEATURES  |                   |
|----------------------|---------------------------------|--------------------|-------------------|
| Pipeline             | Permanent ROW                   | Existing Roads     | Existing Pipeline |
| Mainline Pipeline    | Construction ROW                | Conservation Lands | Section           |
| Access Road - Gravel | ATWS                            | Township           |                   |
| Off ROW Camp         | Pipe Storage Yard (PSY)         |                    |                   |
| Disposal Site        | Material Site Study Area (MSSA) |                    |                   |

| ALASKA LNG PROJECT             |                   |             |                                       |
|--------------------------------|-------------------|-------------|---------------------------------------|
| Preliminary Facility Locations |                   |             |                                       |
| Mainline Rev C2 Route          |                   |             |                                       |
| BOROUGH:                       | MATANUSKA-SUSITNA | DRAWN BY:   | AGDC                                  |
| STATE:                         | ALASKA            | CHECKED BY: |                                       |
| REV. NO.:                      | REVISION          | DATE        |                                       |
| A                              | ISSUED FOR REVIEW | 2017-03-10  |                                       |
| <b>PRELIMINARY</b>             |                   |             |                                       |
| 1:24,000                       |                   |             |                                       |
| 0 1/4 1/2 3/4 1 Mile           |                   |             |                                       |
| DATE:                          | 2017-03-10        | PROJECTION: | NAD83 NSRS2007 ALASKAZONE4 FTUS S4392 |

**DISCLAIMER**

The information contained herein is for informational or planning purposes only. It does not nor should it be deemed to be an offer, request or proposals for rights or occupation of any kind. The Alaska LNG Project Participants and their respective officers, employees and agents, make no warranty, implied or otherwise, nor accept any liability, as to the accuracy or completeness of the information contained in these documents, drawings or electronic files. Do not remove or delete this note from document, drawing or electronic file.

Alaska LNG Project

PRELIMINARY FACILITY LOCATIONS - MAINLINE REV C2 ROUTE

ALASKA LNG



B-153



| Legend               |                    | EXISTING FEATURES               |                   |
|----------------------|--------------------|---------------------------------|-------------------|
| Mainline Pipeline    | Permanent ROW      | Existing Roads                  | Existing Pipeline |
| Access Road - Gravel | Construction ROW   | Conservation Lands              | Section           |
| Mainline Blockvalve  | ATWS               | Camp                            | Township          |
|                      | Compressor Station | Oil ROW Camp                    |                   |
|                      | Camp               | Pipe Storage Yard (PSY)         |                   |
|                      | Disposal Site      | Material Site Study Area (MSSA) |                   |

| ALASKA LNG PROJECT             |   |   |            |
|--------------------------------|---|---|------------|
| Preliminary Facility Locations |   |   |            |
| Mainline Rev C2 Route          |   |   |            |
| BOROUGH:                       | MATANUSKA-SUSITNA                                 | DRAWN BY:                                     | AGDC       |
| STATE:                         | ALASKA  | CHECKED BY:                                   |            |
| REV. NO.:                      | REVISION  | DATE  |            |
| A                              | ISSUED FOR REVIEW                                 | 2017-03-10                                    |            |
| <b>PRELIMINARY</b>             |   |   |            |
| 1:24,000                       |   |   |            |
| DATE: 2017-03-10               | PROJECTION: NAD83 NSRS2007 ALASKAZONE4 FTUS 54392 | DWG: RR-1_APPENDIX_A1_MAINLINE_TOPO_REV_C2_CL | SHEET: 146 |

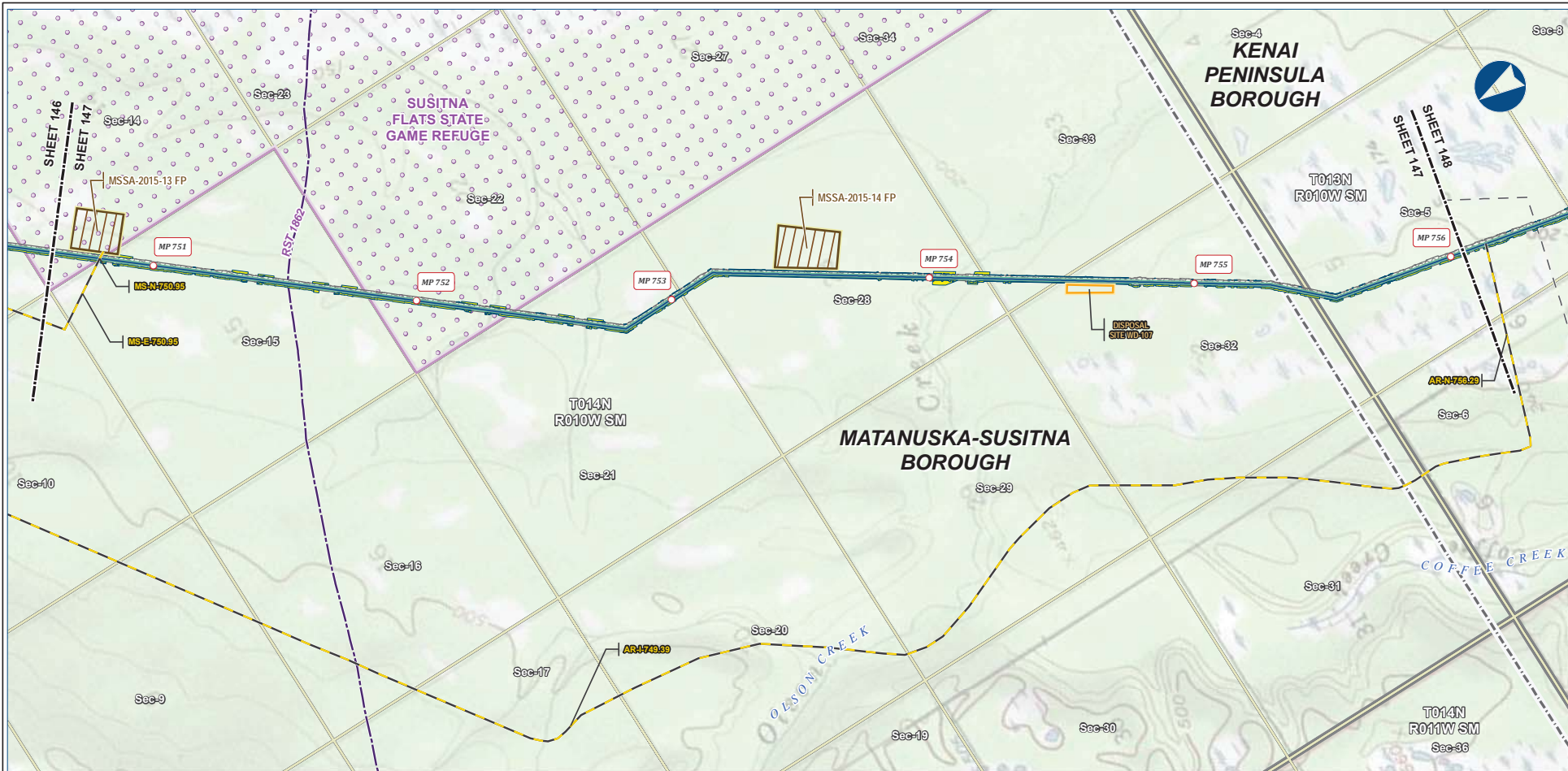
**DISCLAIMER**

The information contained herein is for informational or planning purposes only. It does not nor should it be deemed to be an offer, request or proposals for rights or occupation of any kind. The Alaska LNG Project Participants and their respective officers, employees and agents, make no warranty, implied or otherwise, nor accept any liability, as to the accuracy or completeness of the information contained in these documents, drawings or electronic files. Do not remove or delete this note from document, drawing or electronic file.

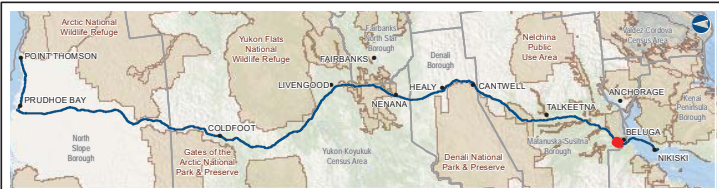
Alaska LNG Project

PRELIMINARY FACILITY LOCATIONS - MAINLINE REV C2 ROUTE

ALASKA LNG



B-154



| PIPELINE |                                 | EXISTING FEATURES |                            |
|----------|---------------------------------|-------------------|----------------------------|
|          | Mainline Pipeline               |                   | Existing Roads             |
|          | Construction ROW                |                   | Revised Statute 2477 Trail |
|          | Access Road - Gravel            |                   | Off Road Trails            |
|          | Permanent ROW                   |                   | Borough / Consus Area      |
|          | ATWS                            |                   | Conservation Lands         |
|          | Disposal Site                   |                   | Section                    |
|          | Material Site Study Area (MSSA) |                   | Township                   |

| ALASKA LNG PROJECT<br>Preliminary Facility Locations<br>Mainline Rev C2 Route |                   |             |                                       |
|---|-------------------|-------------|---------------------------------------|
| BOROUGH:  | MATANUSKA-SUSITNA | DRAWN BY:   | AGDC                                  |
| STATE:  | ALASKA            | CHECKED BY: |                                       |
| REV. NO.:   | REVISION          | DATE        |                                       |
| A   | ISSUED FOR REVIEW | 2017-03-10  |                                       |
| <b>PRELIMINARY</b>  |                   |             |                                       |
| 1:24,000  |                   |             |                                       |
| DATE:   | 2017-03-10        | PROJECTION: | NAD83 NRSR2007 ALASKAZONE4 FTUS 54392 |

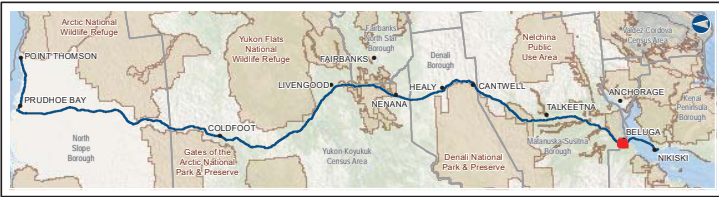
**DISCLAIMER**

The information contained herein is for informational or planning purposes only. It does not nor should it be deemed to be an offer, request or proposals for rights or occupation of any kind. The Alaska LNG Project Participants and their respective officers, employees and agents, make no warranty, implied or otherwise, nor accept any liability, as to the accuracy or completeness of the information contained in these documents, drawings or electronic files. Do not remove or delete this note from document, drawing or electronic file.

Alaska LNG Project



B-155

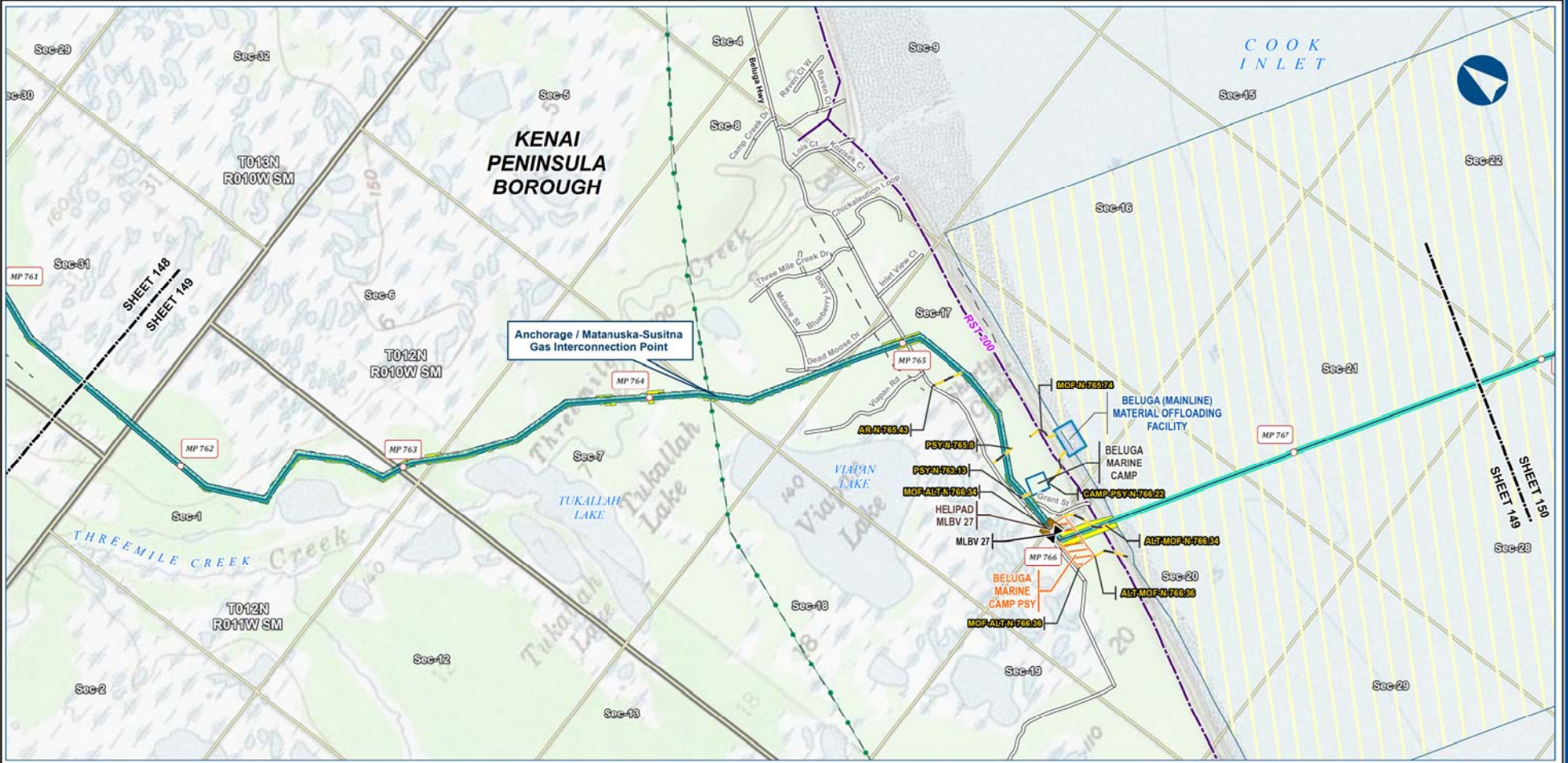


| Legend                          |                  | EXISTING FEATURES |                 |
|---------------------------------|------------------|-------------------|-----------------|
| Mainline Pipeline               | Permanent ROW    | Existing Roads    | Off Road Trails |
| Access Road - Gravel            | Construction ROW | Section           | Township        |
| Disposal Site                   | ATWS             |                   |                 |
| Material Site Study Area (MSSA) |                  |                   |                 |

| ALASKA LNG PROJECT             |                   |             |                                       |
|--------------------------------|-------------------|-------------|---------------------------------------|
| Preliminary Facility Locations |                   |             |                                       |
| Mainline Rev C2 Route          |                   |             |                                       |
| BOROUGH:                       | KENAI PENINSULA   | DRAWN BY:   | AGDC                                  |
| STATE:                         | ALASKA            | CHECKED BY: |                                       |
| REV. NO.:                      | REVISION          | DATE        |                                       |
| A                              | ISSUED FOR REVIEW | 2017-03-10  |                                       |
| <b>PRELIMINARY</b>             |                   |             |                                       |
| 1:24,000                       |                   |             |                                       |
| DATE:                          | 2017-03-10        | PROJECTION: | NAD83 NRSR2007 ALASKAZONE4 FTUS 54392 |

**DISCLAIMER**

The information contained herein is for informational or planning purposes only. It does not nor should it be deemed to be an offer, request or proposals for rights or occupation of any kind. The Alaska LNG Project Participants and their respective officers, employees and agents, make no warranty, implied or otherwise, nor accept any liability, as to the accuracy or completeness of the information contained in these documents, drawings or electronic files. Do not remove or delete this note from document, drawing or electronic file.



| Legend                             |                         | EXISTING FEATURES |                            |
|------------------------------------|-------------------------|-------------------|----------------------------|
| Permanent ROW                      | Alaska LNG Rev C2 Route | Existing Roads    | Revised Statute 2477 Trail |
| Access Road - Gravel               | Construction ROW        | Off Road Trails   | Existing Pipeline          |
| Manline Blockvalve                 | ATWS                    | Section           | Township                   |
| Lay Barge Anchor Spread Area       | Oil ROW Camp            |                   |                            |
| Helipad                            | Pipe Storage Yard (PSY) |                   |                            |
| Material Offloading Facility (MOF) |                         |                   |                            |

| ALASKA LNG PROJECT<br>Preliminary Facility Locations<br>Mainline Rev C2 Route |                       |             |                                       |
|---|-----------------------|-------------|---------------------------------------|
| BOROUGH:  | KENAI PENINSULA       | DRAWN BY:   | AGDC                                  |
| STATE:  | ALASKA                | CHECKED BY: |                                       |
| REV. NO.:   | REVISION              | DATE        |                                       |
| B   | BELUGA (MAINLINE) MOF | 2019-07-09  |                                       |
| <b>PRELIMINARY</b>  |                       |             |                                       |
| 1:24,000  |                       |             |                                       |
| DATE:   | 2019-07-09            | PROJECTION: | NAD83 NRSR2007 ALASKAZONE4 FTUS 54392 |

**DISCLAIMER**

The information contained herein is for informational or planning purposes only. It does not nor should it be deemed to be an offer, request or proposals for rights or occupation of any kind. The Alaska LNG Project Participants and their respective officers, employees and agents, make no warranty, implied or otherwise, nor accept any liability, as to the accuracy or completeness of the information contained in these documents, drawings or electronic files. Do not remove or delete this note from document, drawing or electronic file.

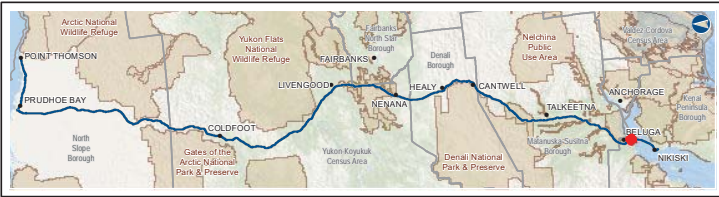


PRELIMINARY FACILITY LOCATIONS - MAINLINE REV C2 ROUTE

ALASKA LNG



B-157



**Legend**

|                              |               |                |
|------------------------------|---------------|----------------|
| Mainline Pipeline            | Permanent ROW | Existing Roads |
| Construction ROW             | ATWS          | Section        |
| Lay Barge Anchor Spread Area | Township      |                |

**ALASKA LNG PROJECT**  
Preliminary Facility Locations  
Mainline Rev C2 Route

|                    |                   |             |                                       |
|--------------------|-------------------|-------------|---------------------------------------|
| BOROUGH:           | KENAI PENINSULA   | DRAWN BY:   | AGDC                                  |
| STATE:             | ALASKA            | CHECKED BY: |                                       |
| REV. NO.:          | REVISION          | DATE        |                                       |
| A                  | ISSUED FOR REVIEW | 2017-03-10  |                                       |
| <b>PRELIMINARY</b> |                   |             |                                       |
| 1:24,000           |                   |             |                                       |
| 0 5 10 Miles       |                   |             |                                       |
| DATE:              | 2017-03-10        | PROJECTION: | NAD83 NSRS2007 ALASKAZONE4 FTUS 54392 |

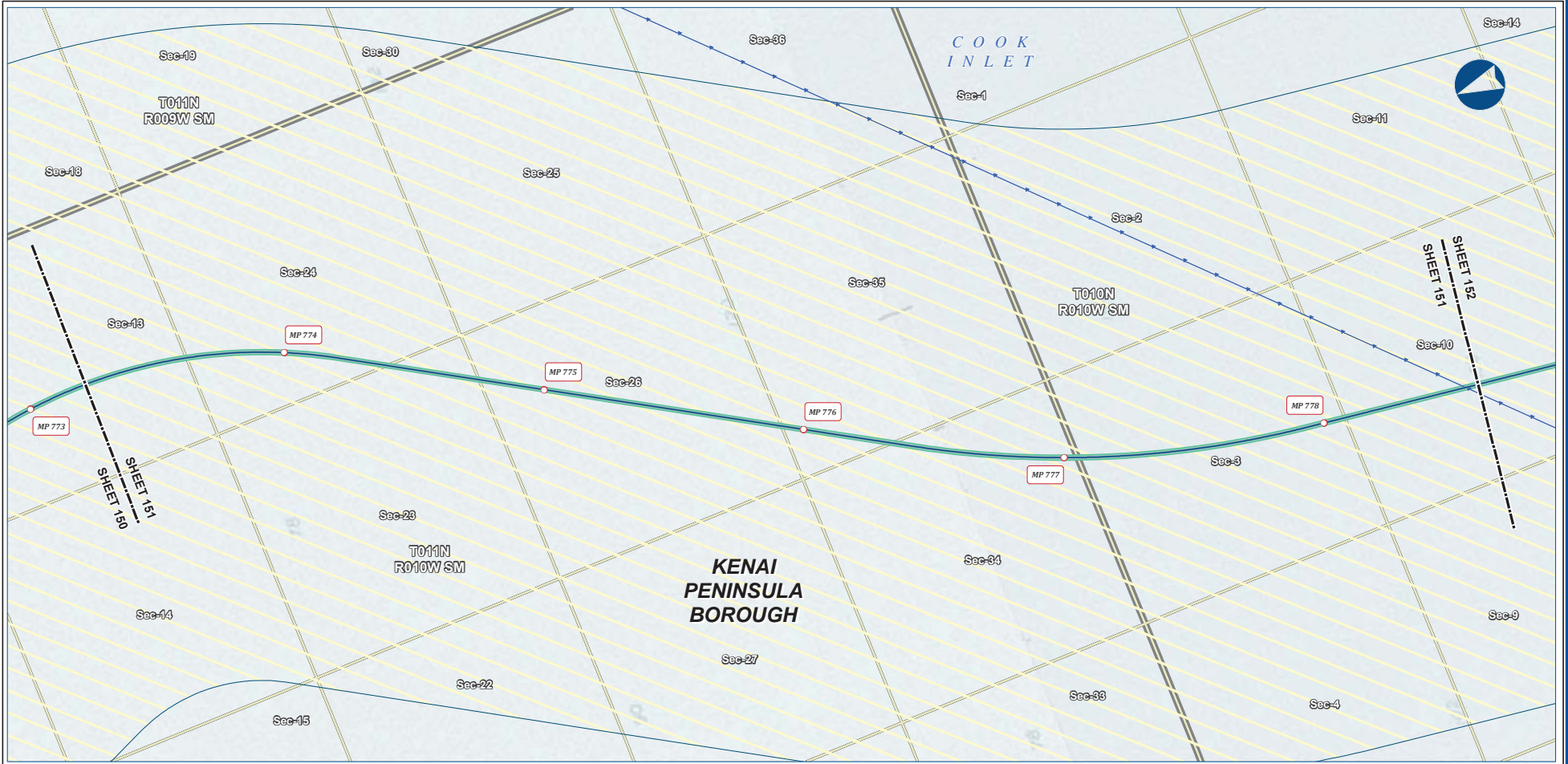
**DISCLAIMER**

The information contained herein is for informational or planning purposes only. It does not nor should it be deemed to be an offer, request or proposals for rights or occupation of any kind. The Alaska LNG Project Participants and their respective officers, employees and agents, make no warranty, implied or otherwise, nor accept any liability, as to the accuracy or completeness of the information contained in these documents, drawings or electronic files. Do not remove or delete this note from document, drawing or electronic file.

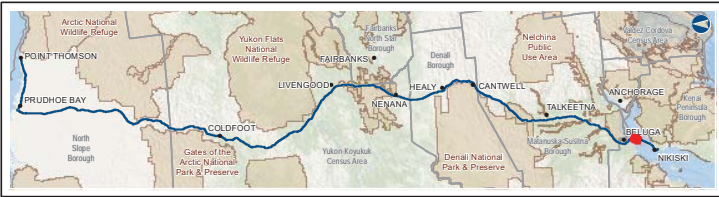
Alaska LNG Project

PRELIMINARY FACILITY LOCATIONS - MAINLINE REV C2 ROUTE

ALASKA LNG



B-158



**Legend**

|                              |               |                 |
|------------------------------|---------------|-----------------|
| Mainline Pipeline            | Permanent ROW | Existing Roads  |
| Construction ROW             | ATWS          | Submarine Cable |
| Lay Barge Anchor Spread Area | Section       | Township        |

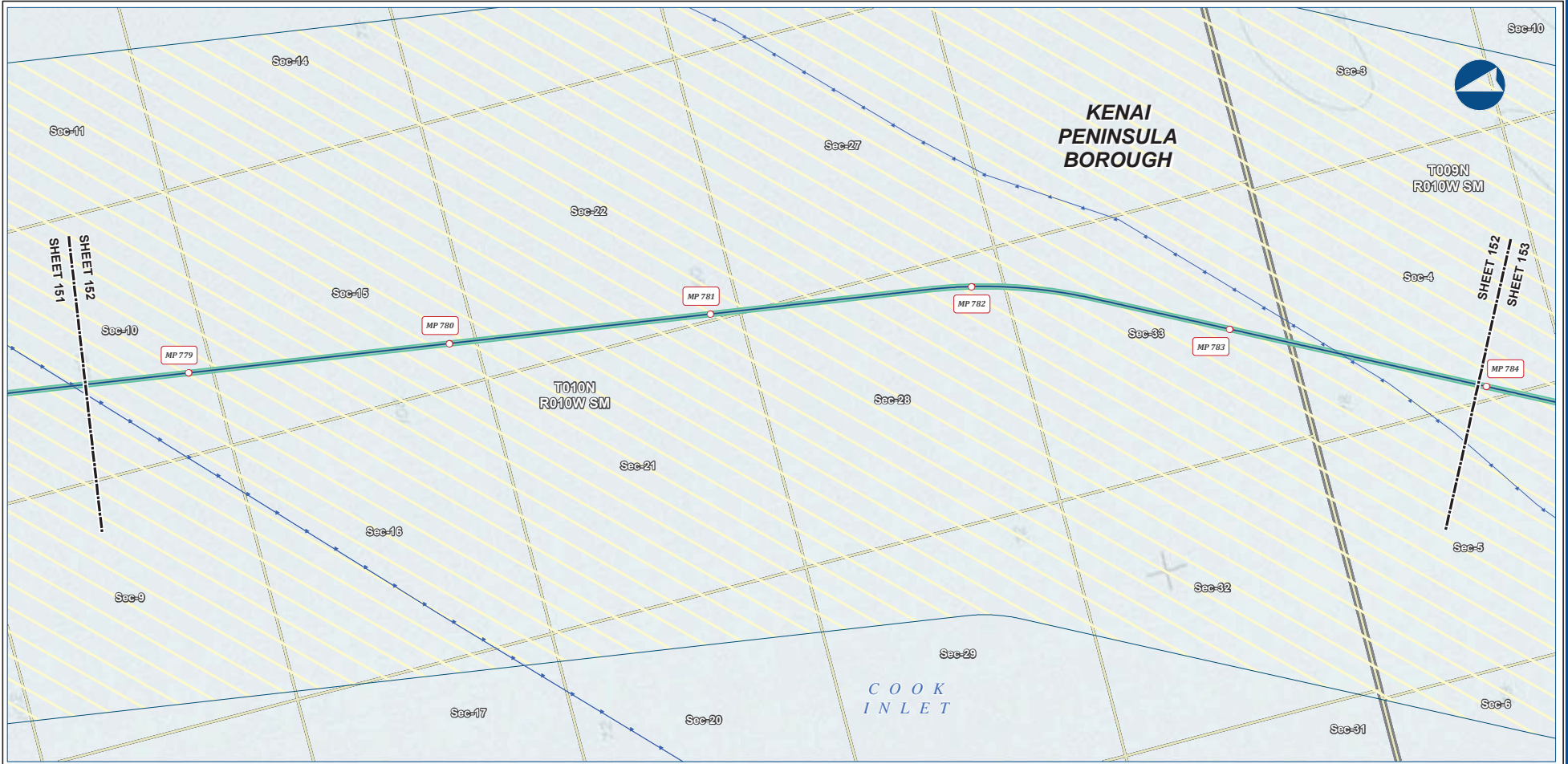
**ALASKA LNG PROJECT**  
Preliminary Facility Locations  
Mainline Rev C2 Route

|                    |                   |             |                                       |
|--------------------|-------------------|-------------|---------------------------------------|
| BOROUGH:           | KENAI PENINSULA   | DRAWN BY:   | AGDC                                  |
| STATE:             | ALASKA            | CHECKED BY: |                                       |
| REV. NO.:          | REVISION          | DATE        |                                       |
| A                  | ISSUED FOR REVIEW | 2017-03-10  |                                       |
| <b>PRELIMINARY</b> |                   |             |                                       |
| 1:24,000           |                   |             |                                       |
| DATE:              | 2017-03-10        | PROJECTION: | NAD83 NSRS2007 ALASKAZONE4 FTUS 54392 |

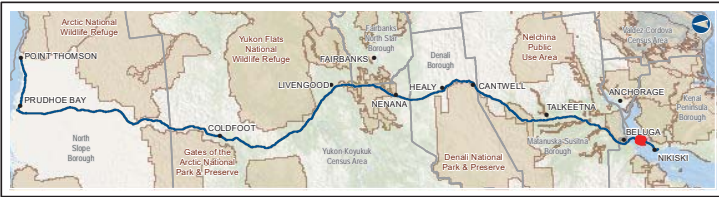
**DISCLAIMER**

The information contained herein is for informational or planning purposes only. It does not nor should it be deemed to be an offer, request or proposals for rights or occupation of any kind. The Alaska LNG Project Participants and their respective officers, employees and agents, make no warranty, implied or otherwise, nor accept any liability, as to the accuracy or completeness of the information contained in these documents, drawings or electronic files. Do not remove or delete this note from document, drawing or electronic file.

Alaska LNG Project



B-159



**Legend**

|                              |               |                 |
|------------------------------|---------------|-----------------|
| Mainline Pipeline            | Permanent ROW | Existing Roads  |
| Construction ROW             | ATWS          | Submarine Cable |
| Lay Barge Anchor Spread Area | Section       | Township        |

**ALASKA LNG PROJECT**  
Preliminary Facility Locations  
Mainline Rev C2 Route

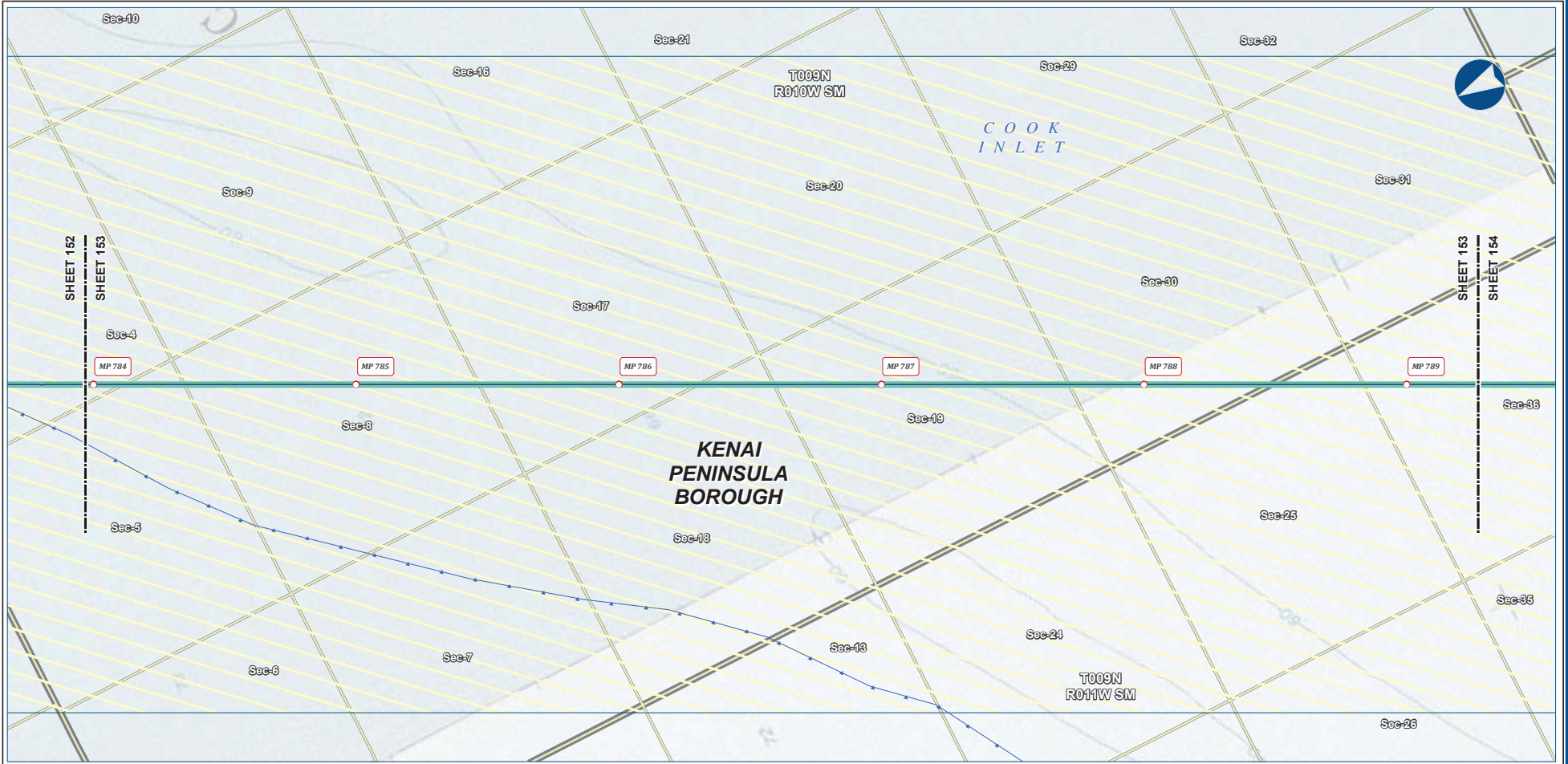
|                                      |  |
|--------------------------------------|--|
| <b>BOROUGH:</b> KENAI PENINSULA      | <b>DRAWN BY:</b> AGDC                                    |
| <b>STATE:</b> ALASKA                 | <b>CHECKED BY:</b>                                       |
| <b>REV. NO.:</b>                     | <b>REVISION</b> <b>DATE</b>                              |
| A                                    | ISSUED FOR REVIEW      2017-03-10                        |
| <b>PRELIMINARY</b>                   |  |
| 1:24,000      0      5      10 Miles |  |
| <b>DATE:</b> 2017-03-10              | <b>PROJECTION:</b> NAD83 NSRS2007 ALASKAZONE4 FTUS 54392 |

**DISCLAIMER**

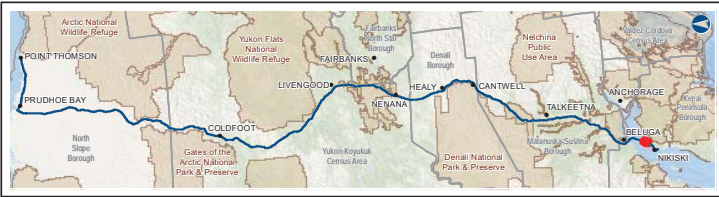
The information contained herein is for informational or planning purposes only. It does not nor should it be deemed to be an offer, request or proposals for rights or occupation of any kind. The Alaska LNG Project Participants and their respective officers, employees and agents, make no warranty, implied or otherwise, nor accept any liability, as to the accuracy or completeness of the information contained in these documents, drawings or electronic files. Do not remove or delete this note from document, drawing or electronic file.

PRELIMINARY FACILITY LOCATIONS - MAINLINE REV C2 ROUTE

ALASKA LNG



B-160



**Legend**

|                              |               |                 |
|------------------------------|---------------|-----------------|
| Mainline Pipeline            | Permanent ROW | Existing Roads  |
| Construction ROW             | ATWS          | Submarine Cable |
| Lay Barge Anchor Spread Area | Section       | Township        |

**ALASKA LNG PROJECT**  
Preliminary Facility Locations  
Mainline Rev C2 Route

|                    |                   |             |                                       |
|--------------------|-------------------|-------------|---------------------------------------|
| BOROUGH:           | KENAI PENINSULA   | DRAWN BY:   | AGDC                                  |
| STATE:             | ALASKA            | CHECKED BY: |                                       |
| REV. NO.:          | REVISION          | DATE        |                                       |
| A                  | ISSUED FOR REVIEW | 2017-03-10  |                                       |
| <b>PRELIMINARY</b> |                   |             |                                       |
| 1:24,000           |                   |             |                                       |
| DATE:              | 2017-03-10        | PROJECTION: | NAD83 NRSR2007 ALASKAZONE4 FTUS 54392 |

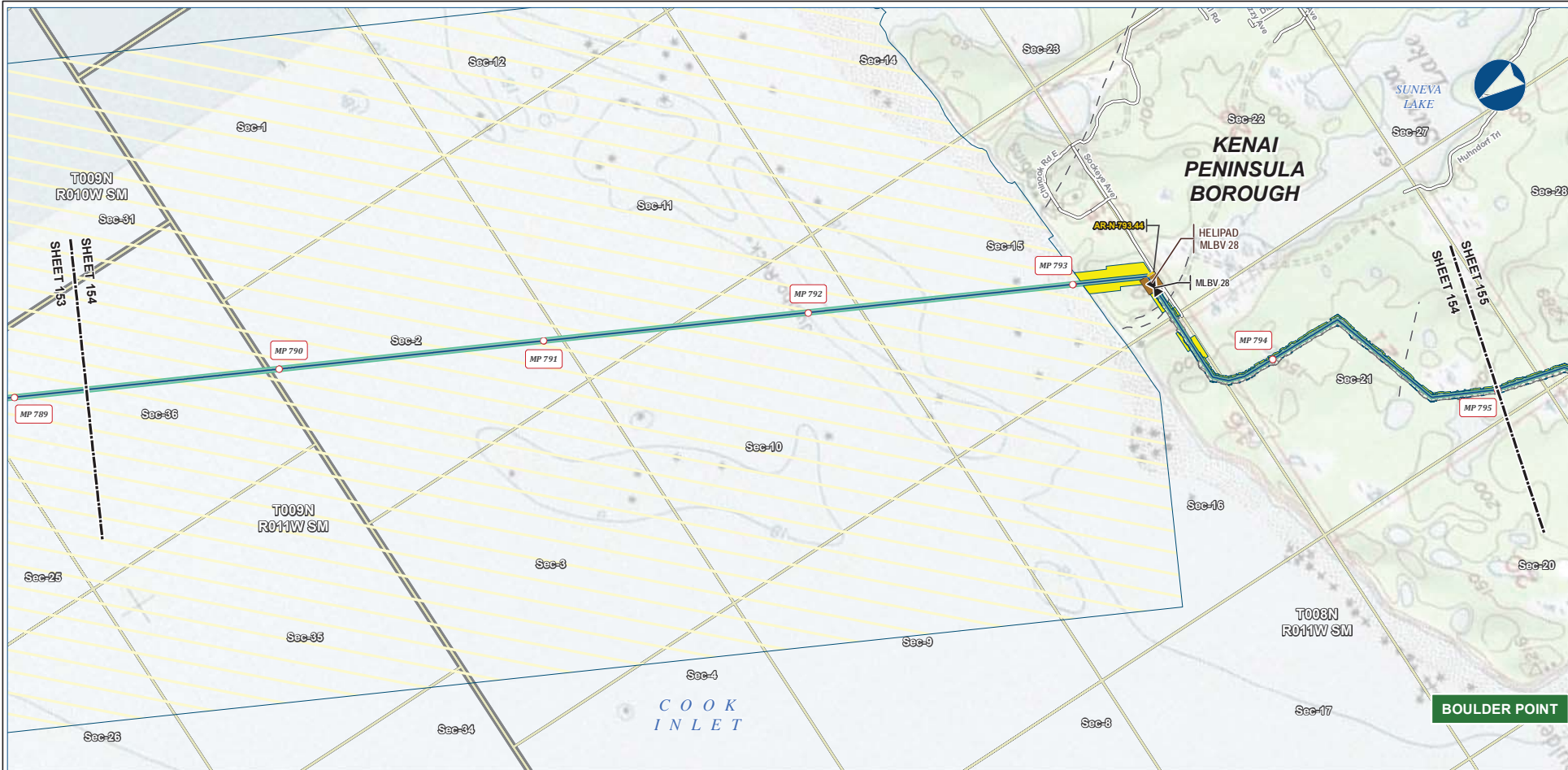
**DISCLAIMER**

The information contained herein is for informational or planning purposes only. It does not nor should it be deemed to be an offer, request or proposals for rights or occupation of any kind. The Alaska LNG Project Participants and their respective officers, employees and agents, make no warranty, implied or otherwise, nor accept any liability, as to the accuracy or completeness of the information contained in these documents, drawings or electronic files. Do not remove or delete this note from document, drawing or electronic file.

Alaska LNG Project

PRELIMINARY FACILITY LOCATIONS - MAINLINE REV C2 ROUTE

ALASKA LNG



B-161



| Legend               |                              |                 |
|----------------------|------------------------------|-----------------|
| Permanent ROW        | Construction ROW             | Existing Roads  |
| Access Road - Gravel | ATWS                         | Off Road Trails |
| Mainline Blockvale   | Lay Barge Anchor Spread Area | Section         |
| Helipad              |                              | Township        |

| ALASKA LNG PROJECT<br>Preliminary Facility Locations<br>Mainline Rev C2 Route |                   |             |                                       |
|---|-------------------|-------------|---------------------------------------|
| BOROUGH:  | KENAI PENINSULA   | DRAWN BY:   | AGDC                                  |
| STATE:  | ALASKA            | CHECKED BY: |                                       |
| REV. NO.:   | REVISION          | DATE        |                                       |
| A   | ISSUED FOR REVIEW | 2017-03-10  |                                       |
| <b>PRELIMINARY</b>  |                   |             |                                       |
| 1:24,000  |                   |             |                                       |
|   |                   |             |                                       |
| DATE:   | 2017-03-10        | PROJECTION: | NAD83 NSRS2007 ALASKAZONE4 FTUS 54392 |

**DISCLAIMER**

The information contained herein is for informational or planning purposes only. It does not nor should it be deemed to be an offer, request or proposals for rights or occupation of any kind. The Alaska LNG Project Participants and their respective officers, employees and agents, make no warranty, implied or otherwise, nor accept any liability, as to the accuracy or completeness of the information contained in these documents, drawings or electronic files. Do not remove or delete this note from document, drawing or electronic file.

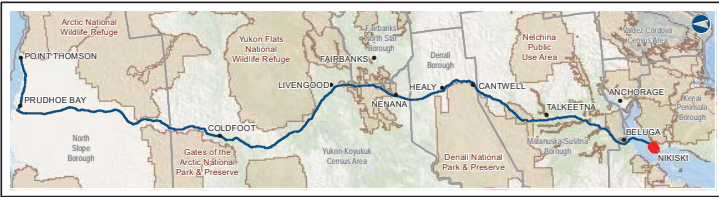
Alaska LNG Project

PRELIMINARY FACILITY LOCATIONS - MAINLINE REV C2 ROUTE

ALASKA LNG



B-162



| PIPELINE |                    | EXISTING FEATURES |                        |
|----------|--------------------|-------------------|------------------------|
|          | Permanent ROW      |                   | Existing Roads         |
|          | Mainline Pipeline  |                   | Construction ROW       |
|          | Mainline Blockvale |                   | Off Road Trails        |
|          | Helipad            |                   | Existing Pipeline      |
|          |                    |                   | Overhead Powerline     |
|          |                    |                   | Submarine Cable        |
|          |                    |                   | Alaska DOT Place Names |
|          |                    |                   | Section                |
|          |                    |                   | Township               |

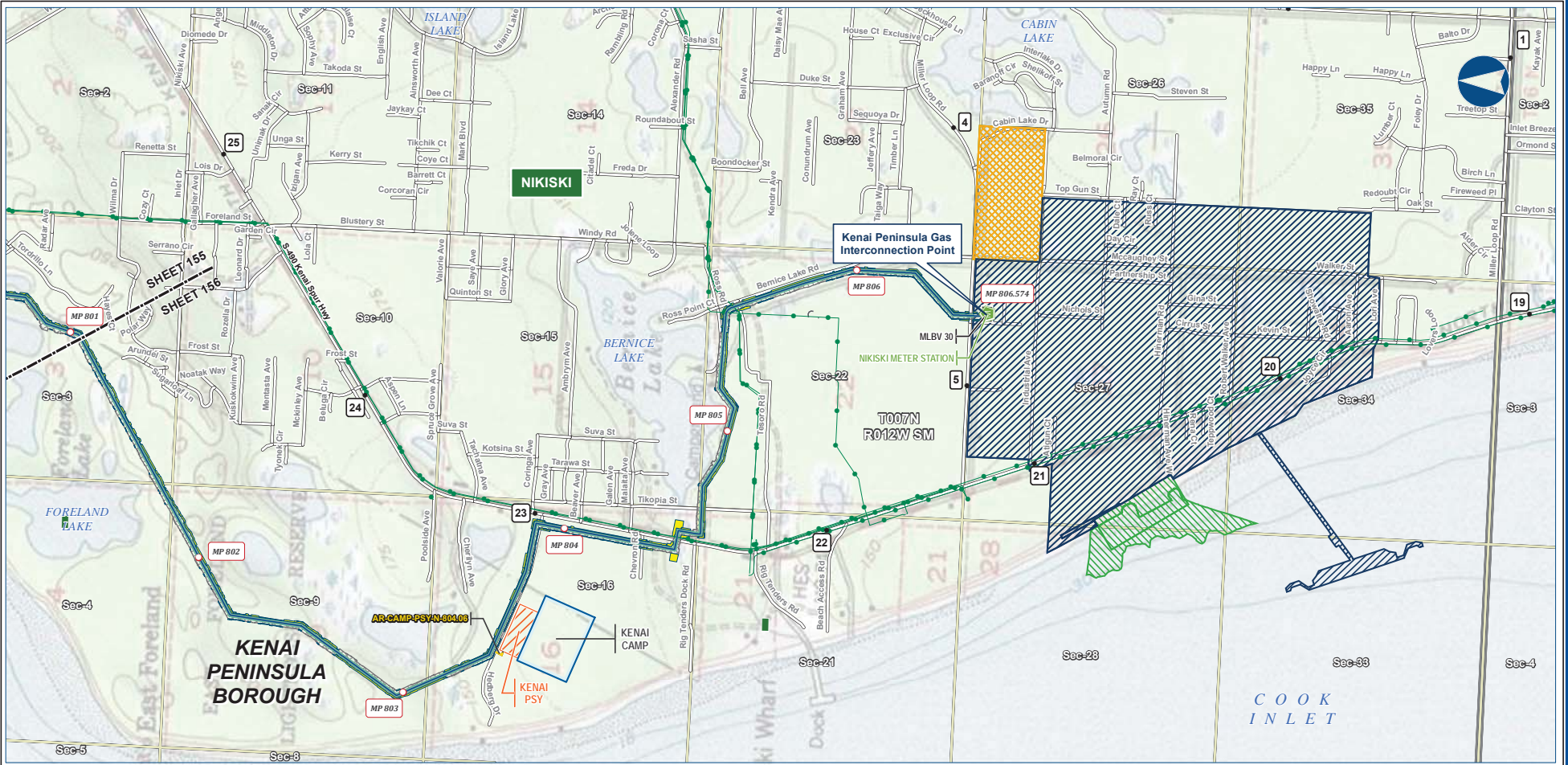
| ALASKA LNG PROJECT             |                   |             |                                       |
|--------------------------------|-------------------|-------------|---------------------------------------|
| Preliminary Facility Locations |                   |             |                                       |
| Mainline Rev C2 Route          |                   |             |                                       |
| BOROUGH:                       | KENAI PENINSULA   | DRAWN BY:   | AGDC                                  |
| STATE:                         | ALASKA            | CHECKED BY: |                                       |
| REV. NO.:                      | REVISION          | DATE        |                                       |
| A                              | ISSUED FOR REVIEW | 2017-03-10  |                                       |
| <b>PRELIMINARY</b>             |                   |             |                                       |
| 1:24,000                       |                   |             |                                       |
|                                |                   |             |                                       |
| DATE:                          | 2017-03-10        | PROJECTION: | NAD83 NSRS2007 ALASKAZONE4 FTUS S4392 |

**DISCLAIMER**

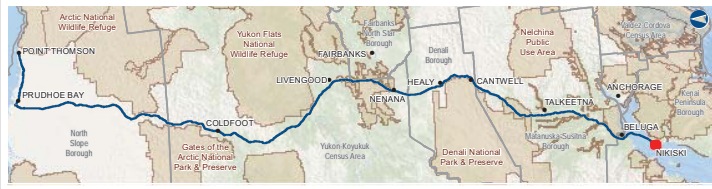
The information contained herein is for informational or planning purposes only. It does not nor should it be deemed to be an offer, request or proposals for rights or occupation of any kind. The Alaska LNG Project Participants and their respective officers, employees and agents, make no warranty, implied or otherwise, nor accept any liability, as to the accuracy or completeness of the information contained in these documents, drawings or electronic files. Do not remove or delete this note from document, drawing or electronic file.

Alaska LNG Project

PRELIMINARY FACILITY LOCATIONS - MAINLINE REV C2 ROUTE



B-163



Alaska LNG Project

**Legend**

**LNG Liquefaction Facility**

- Permanent
- Construction
- Temporary Construction Camp

**PIPELINE**

- Mainline Pipeline
- Access Road - Gravel
- Meter Station
- Mainline Blockvalve

**EXISTING FEATURES**

- Existing Roads
- Off Road Trails
- Existing Pipeline
- Alaska DOT Place Names
- Section
- Township

**Other Symbols:**

- Permanent ROW
- Construction ROW
- ATWS
- Off ROW Camp
- Pipe Storage Yard (PSY)

**ALASKA LNG PROJECT**  
Preliminary Facility Locations  
Mainline Rev C2 Route

|                    |                 |                   |                                       |
|--------------------|-----------------|-------------------|---------------------------------------|
| BOROUGH:           | KENAI PENINSULA | DRAWN BY:         | AGDC                                  |
| STATE:             | ALASKA          | CHECKED BY:       |                                       |
| REV. NO.:          |                 | REVISION          | DATE                                  |
| A                  |                 | ISSUED FOR REVIEW | 2017-03-24                            |
| <b>PRELIMINARY</b> |                 |                   |                                       |
| 1:24,000           |                 |                   |                                       |
| DATE:              | 2017-03-24      | PRODUCTION:       | NAD83 NSRS2007 ALASKAZONE4 FTUS 54392 |

**DISCLAIMER**

The information contained herein is for informational or planning purposes only. It does not nor should it be deemed to be an offer, request or proposals for rights or occupation of any kind. The Alaska LNG Project Participants and their respective officers, employees and agents, make no warranty, implied or otherwise, nor accept any liability, as to the accuracy or completeness of the information contained in these documents, drawings or electronic files. Do not remove or delete this note from document, drawing or electronic file.

## **Liquefaction Facilities**

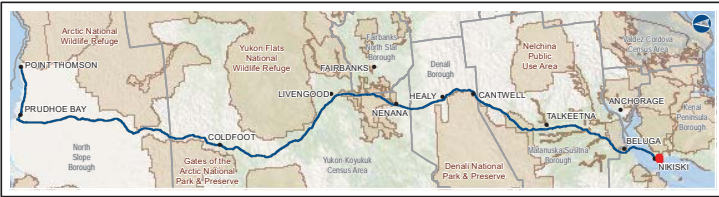


PROPOSED ABOVEGROUND FACILITY - LIQUEFACTION FACILITY - FIGURE B1-2



REPRESENTATIVE AREA FOR FACILITY SITING - SUBJECT TO CHANGE

B-164



Alaska LNG Project

- Legend**
- Mainline Pipeline
  - LNG Plant Generalized Plot Plan Features
  - LNG Plant Operations Area
  - LNG Plant Construction Camp
  - Marine Terminal Footprint Operations Area
  - Temporary MOF and MOF Dredging Area

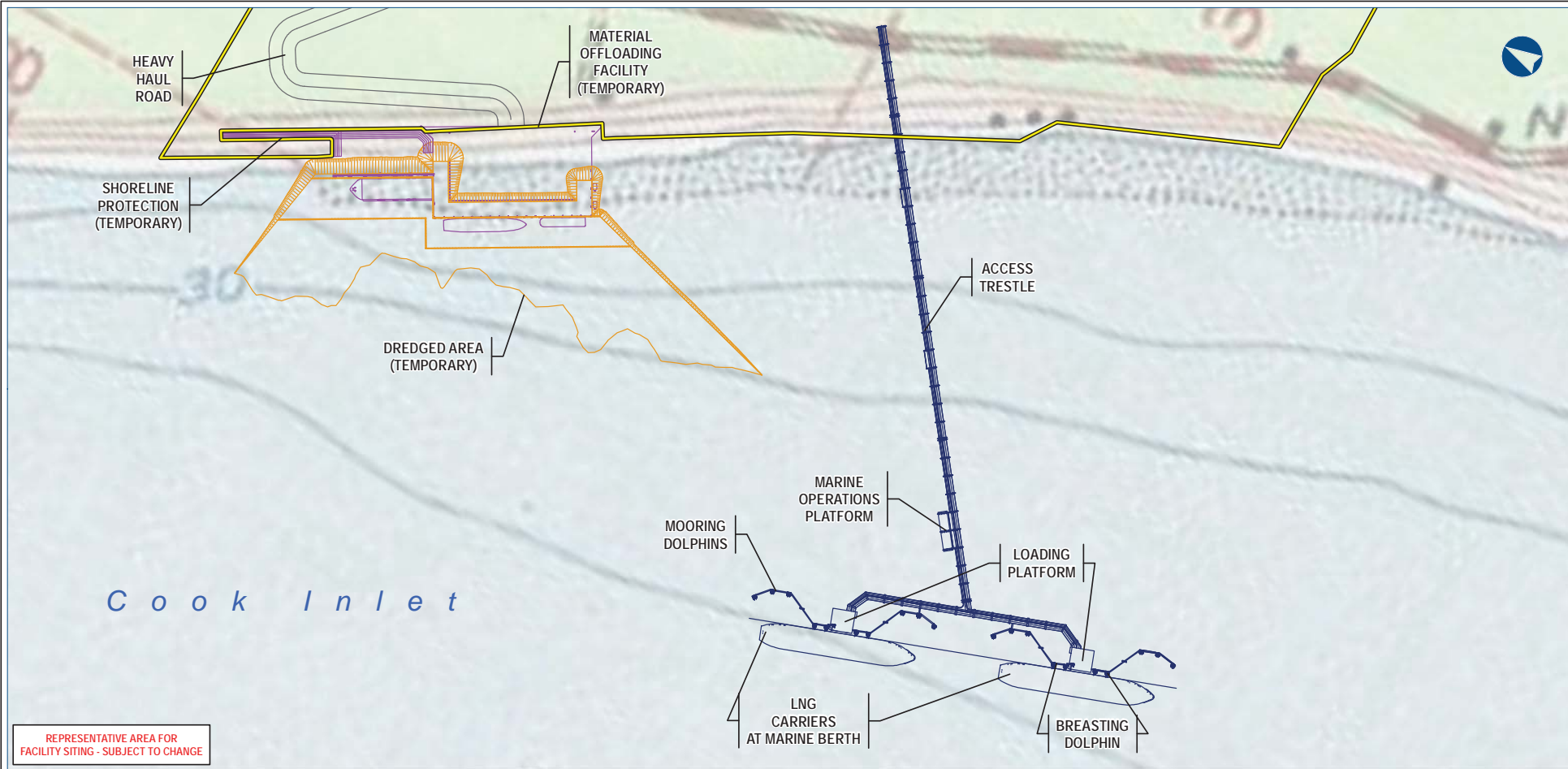
| ALASKA LNG PROJECT<br>Proposed Aboveground Facility -<br>Liquefaction Facility |                   |             |                                       |
|--|-------------------|-------------|---------------------------------------|
| BOROUGH:   | KENAI PENINSULA   | DRAWN BY:   | AGDC                                  |
| STATE:   | ALASKA            | CHECKED BY: |                                       |
| REV. NO.:  | REVISION          | DATE        |                                       |
| A  | ISSUED FOR REVIEW | 2017-03-09  |                                       |
| <b>PRELIMINARY</b>   |                   |             |                                       |
| 1:17,000 0 1,000 2,000 Feet  |                   |             |                                       |
| DATE:  | 2017-03-09        | PROJECTION: | NAD83 NSRS2007 ALASKAZONE4 FTUS 54392 |

**DISCLAIMER**

The information contained herein is for informational or planning purposes only. It does not nor should it be deemed to be an offer, request or proposals for rights or occupation of any kind. The Alaska LNG Project Participants and their respective officers, employees and agents, make no warranty, implied or otherwise, nor accept any liability, as to the accuracy or completeness of the information contained in these documents, drawings or electronic files. Do not remove or delete this note from document, drawing or electronic file.

X:\ALNG\Resource Reports\RR011\Appendix B\LING\RR1\_APPENDIX\_B1\_LNG\_PLANT\_TOPO\_REV\_C2\_CL.mxd

PROPOSED FACILITY - MARINE TERMINAL - FIGURE B1-3



REPRESENTATIVE AREA FOR FACILITY SITING - SUBJECT TO CHANGE

B-165



**Legend**

- LNG Plant Operations Area
- Material Offloading Facility
- Material Offloading Facility Dredging Area
- Product Loading Facility

**ALASKA LNG PROJECT**  
*Proposed Facility - Marine Terminal*

|                  |   |  |             |
|------------------|---|--|-------------|
| BOROUGH:         | KENAI PENINSULA                                   | DRAWN BY:                                      | AGDC        |
| STATE:           | ALASKA  | CHECKED BY:                                    |             |
| REV. NO.:        | REVISION  | DATE   |             |
| A                | ISSUED FOR REVIEW                                 | 2017-03-09                                     |             |
| PRELIMINARY      |   |  |             |
|                  |   |  |             |
| DATE: 2017-03-09 | PROJECTION: NAD83 NSRS2007 ALASKAZONE4 FTUS 54392 | DWG: RR1_APPENDIX_B1_LNG_MARINE_TOPO_REV_C2_CL | SHEET: B1-3 |

**DISCLAIMER**

The information contained herein is for informational or planning purposes only. It does not nor should it be deemed to be an offer, request or proposals for rights or occupation of any kind. The Alaska LNG Project Participants and their respective officers, employees and agents, make no warranty, implied or otherwise, nor accept any liability, as to the accuracy or completeness of the information contained in these documents, drawings or electronic files. Do not remove or delete this note from document, drawing or electronic file.

X:\AKLNG\Resource Reports\RR011\Appendix B\ILINGRR1\_APPENDIX\_B1\_LNG\_MARINE\_TOPO\_REV\_C2\_CL.mxd