

APPENDIX B
(Volume 2 of 4)

Project Maps

Mainline Facilities MP 355–545

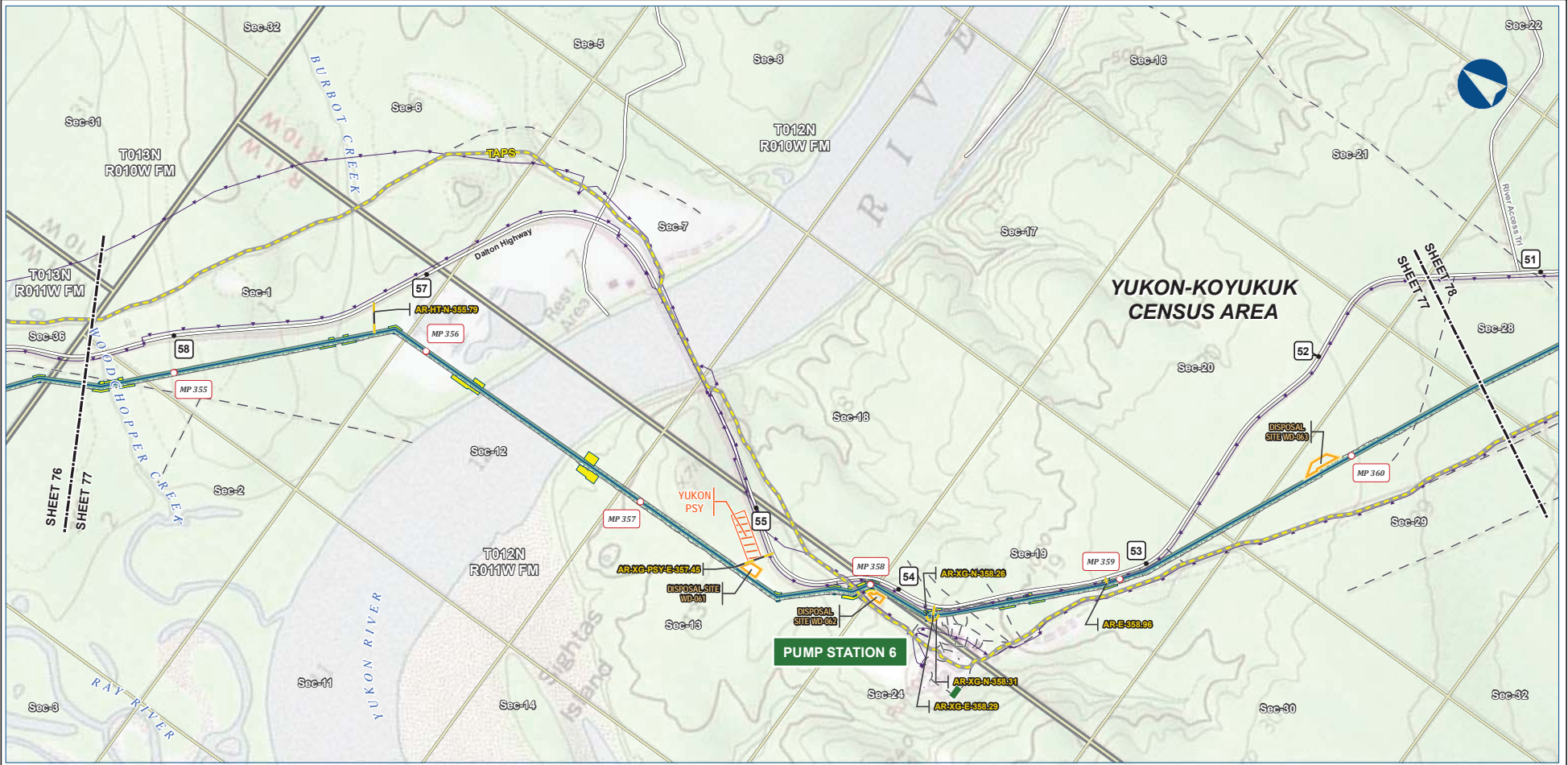
APPENDIX B Volume 2: Project Maps – Mainline Facilities MP 355–545

Table of Contents

Mainline Facilities (cont'd)..... B-84

PRELIMINARY FACILITY LOCATIONS - MAINLINE REV C2 ROUTE

ALASKA LNG



B-84



Alaska LNG Project

Legend		EXISTING FEATURES	
Mainline Pipeline	Permanent ROW	Existing Roads	TAPS
Access Road - Gravel	Construction ROW	Off Road Trails	Buried Cable
Pipe Storage Yard (PSY)	ATWS	Alaska DOT Place Names	Section
Disposal Site	Disposal Site	Township	

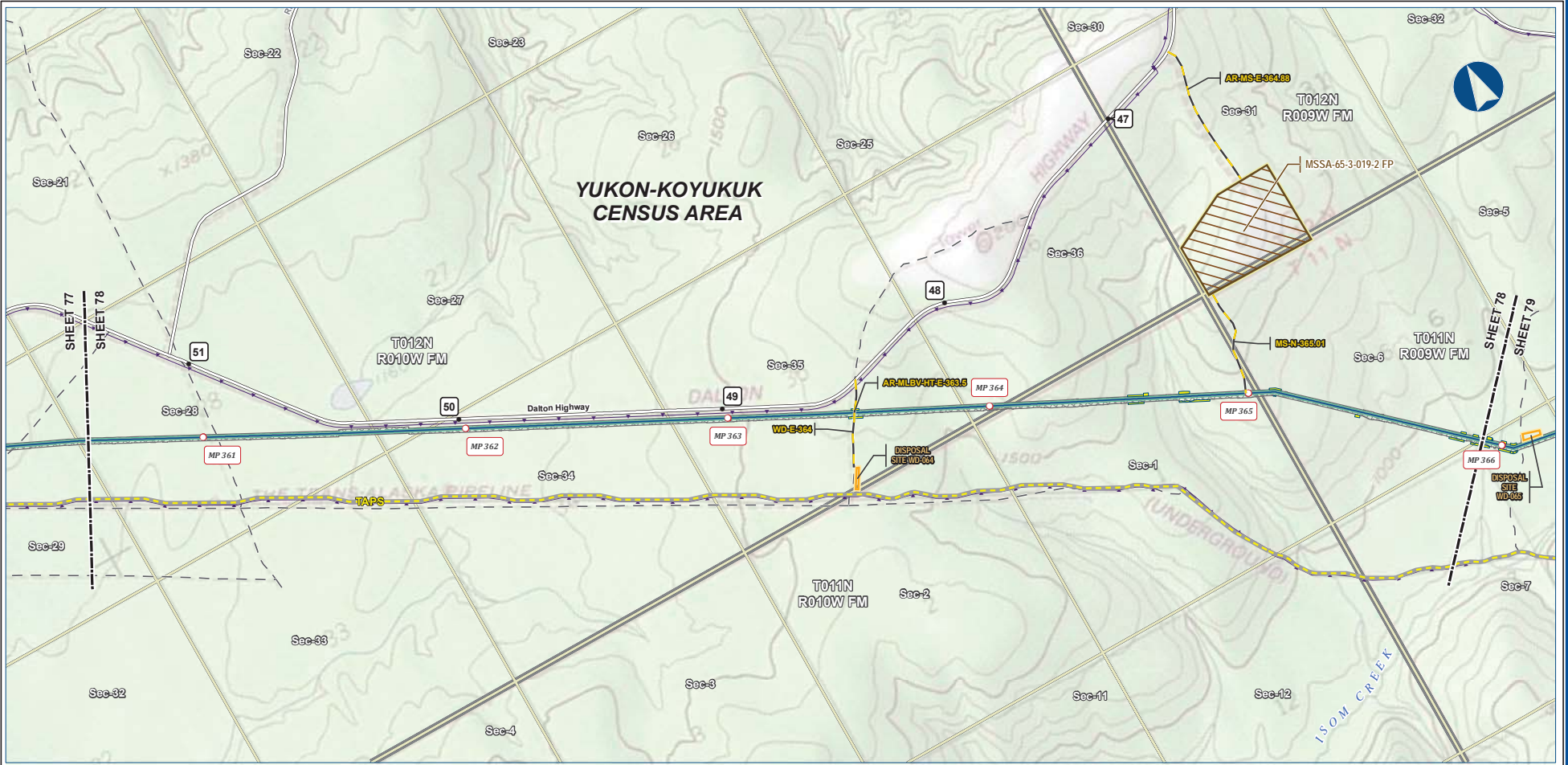
ALASKA LNG PROJECT Preliminary Facility Locations Mainline Rev C2 Route			
CENSUS AREA:	YUKON-KOYUKUK	DRAWN BY:	AGDC
STATE:	ALASKA	CHECKED BY:	
REV. NO.:	REVISION	DATE	
A	ISSUED FOR REVIEW	2017-03-10	
PRELIMINARY			
1:24,000			
DATE:	2017-03-10	PROJECTION:	NAD83 NRSR2007 ALASKAZONE4 FTUS 54392

DISCLAIMER

The information contained herein is for informational or planning purposes only. It does not nor should it be deemed to be an offer, request or proposals for rights or occupation of any kind. The Alaska LNG Project Participants and their respective officers, employees and agents, make no warranty, implied or otherwise, nor accept any liability, as to the accuracy or completeness of the information contained in these documents, drawings or electronic files. Do not remove or delete this note from document, drawing or electronic file.

DWG: RR-1 APPENDIX_A1_MAINLINE_TOPO_REV_C2_CL SHEET: 77

PRELIMINARY FACILITY LOCATIONS - MAINLINE REV C2 ROUTE



B-85



Legend		EXISTING FEATURES	
Mainline Pipeline	Permanent ROW	Existing Roads	Off Road Trails
Access Road - Gravel	Construction ROW	TAPS	Buried Cable
ATWS	Disposal Site	Section	Township
Material Site Study Area (MSSA)			

ALASKA LNG PROJECT			
Preliminary Facility Locations			
Mainline Rev C2 Route			
CENSUS AREA:	YUKON-KOYUKUK	DRAWN BY:	AGDC
STATE:	ALASKA	CHECKED BY:	
REV. NO.:	REVISION	DATE	
A	ISSUED FOR REVIEW	2017-03-10	
PRELIMINARY			
1:24,000			
DATE:	2017-03-10	PROJECTION:	NAD83 NRSR2007 ALASKAZONE4 FTUS 54392

DISCLAIMER

The information contained herein is for informational or planning purposes only. It does not nor should it be deemed to be an offer, request or proposals for rights or occupation of any kind. The Alaska LNG Project Participants and their respective officers, employees and agents, make no warranty, implied or otherwise, nor accept any liability, as to the accuracy or completeness of the information contained in these documents, drawings or electronic files. Do not remove or delete this note from document, drawing or electronic file.

PRELIMINARY FACILITY LOCATIONS - MAINLINE REV C2 ROUTE

ALASKA LNG



B-86



Legend

PIPELINE	Permanent ROW	EXISTING FEATURES
Mainline Pipeline	Construction ROW	Existing Roads
Access Road - Gravel	ATWS	Off Road Trails
	Pipe Storage Yard (PSY)	TAPS
	Disposal Site	Buried Cable
	Material Site Study Area (MSSA)	Section
		Township

ALASKA LNG PROJECT
Preliminary Facility Locations
Mainline Rev C2 Route

CENSUS AREA: YUKON-KOYUKUK	DRAWN BY: AGDC
STATE: ALASKA	CHECKED BY:
REV. NO.:	REVISION
A	ISSUED FOR REVIEW
	DATE
	2017-03-10
PRELIMINARY	
1:24,000	
0 1/4 1/2 3/4 1 Miles	
DATE: 2017-03-10	PROJECTION: NAD83 NRSR2007 ALASKAZONE4 FTUS S4392

DISCLAIMER

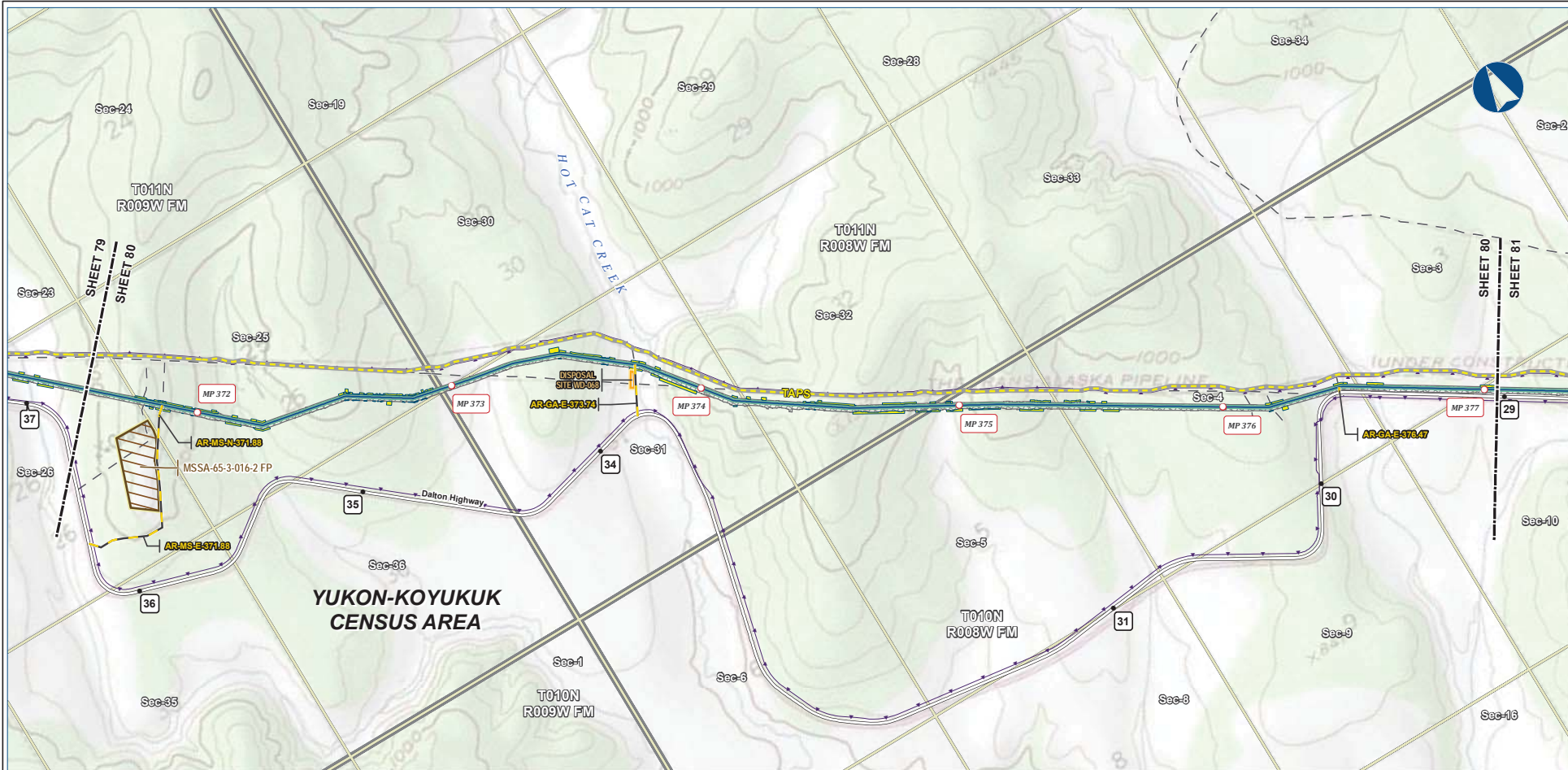
The information contained herein is for informational or planning purposes only. It does not nor should it be deemed to be an offer, request or proposals for rights or occupation of any kind. The Alaska LNG Project Participants and their respective officers, employees and agents, make no warranty, implied or otherwise, nor accept any liability, as to the accuracy or completeness of the information contained in these documents, drawings or electronic files. Do not remove or delete this note from document, drawing or electronic file.

DWG: RR-1_APPENDIX_A1_MAINLINE_TOPO_REV_C2_CL SHEET: 79

Alaska LNG Project

PRELIMINARY FACILITY LOCATIONS - MAINLINE REV C2 ROUTE

ALASKA LNG



B-87



Legend		EXISTING FEATURES	
Pipeline	Permanent ROW	Existing Roads	Off Road Trails
Mainline Pipeline	Construction ROW	TAPS	Buried Cable
Access Road - Gravel	ATWS	Disposal Site	Section
Disposal Site	Material Site Study Area (MSSA)	Township	

ALASKA LNG PROJECT Preliminary Facility Locations Mainline Rev C2 Route			
CENSUS AREA: YUKON-KOYUKUK	DRAWN BY: AGDC		
STATE: ALASKA	CHECKED BY:		
REV. NO.	REVISION	DATE	
A	ISSUED FOR REVIEW	2017-03-10	
PRELIMINARY			
1:24,000			
0 10 20 Miles			
DATE: 2017-03-10	PROJECTION: NAD83 NSRS2007 ALASKAZONE4 FTUS 54392	DWG: RR_1_APPENDIX_A1_MAINLINE_TOPO_REV_C2_CL	SHEET: 80

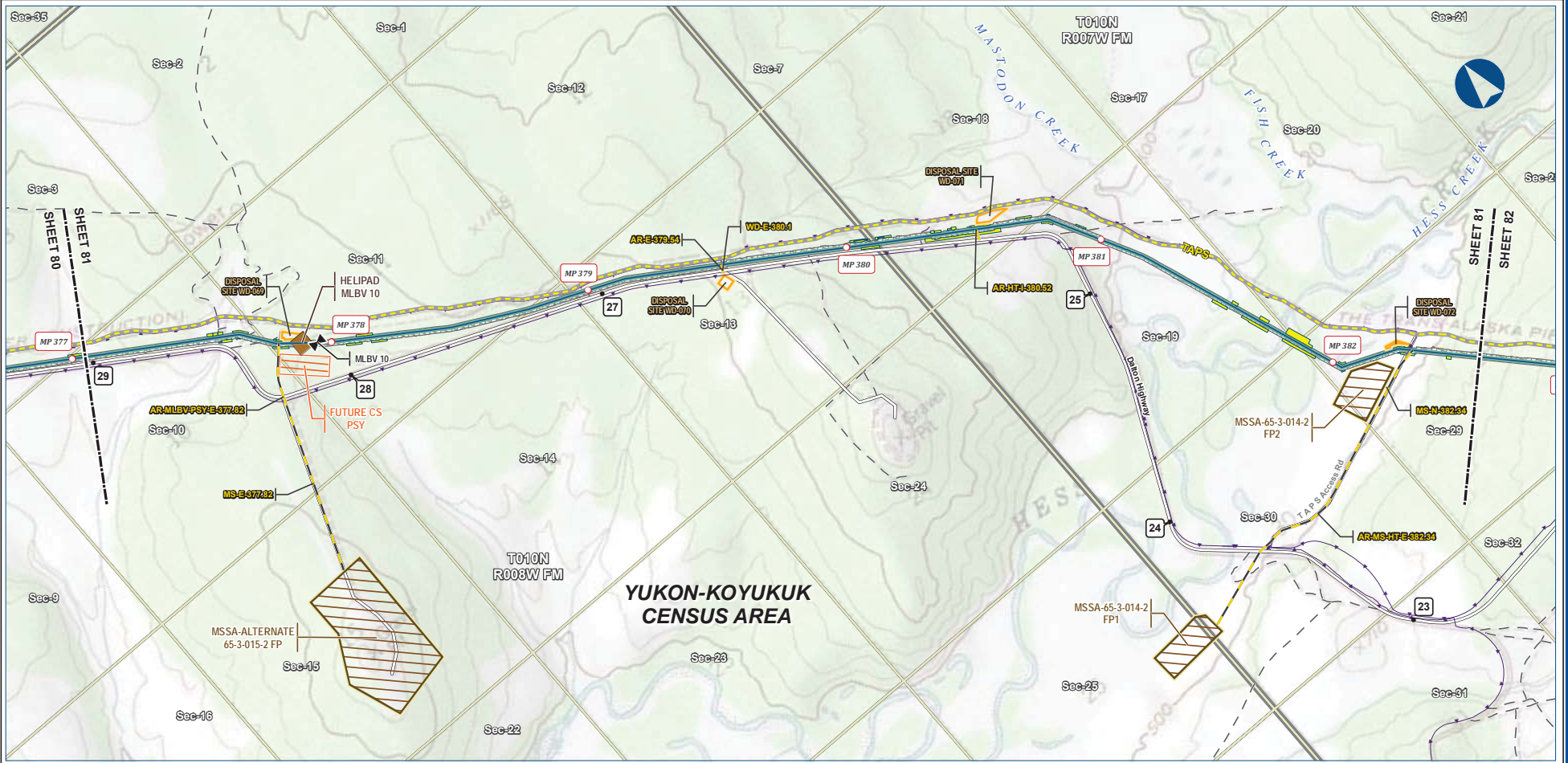
DISCLAIMER

The information contained herein is for informational or planning purposes only. It does not nor should it be deemed to be an offer, request or proposals for rights or occupation of any kind. The Alaska LNG Project Participants and their respective officers, employees and agents, make no warranty, implied or otherwise, nor accept any liability, as to the accuracy or completeness of the information contained in these documents, drawings or electronic files. Do not remove or delete this note from document, drawing or electronic file.

Alaska LNG Project

PRELIMINARY FACILITY LOCATIONS - MAINLINE REV C2 ROUTE

ALASKA LNG



B-88



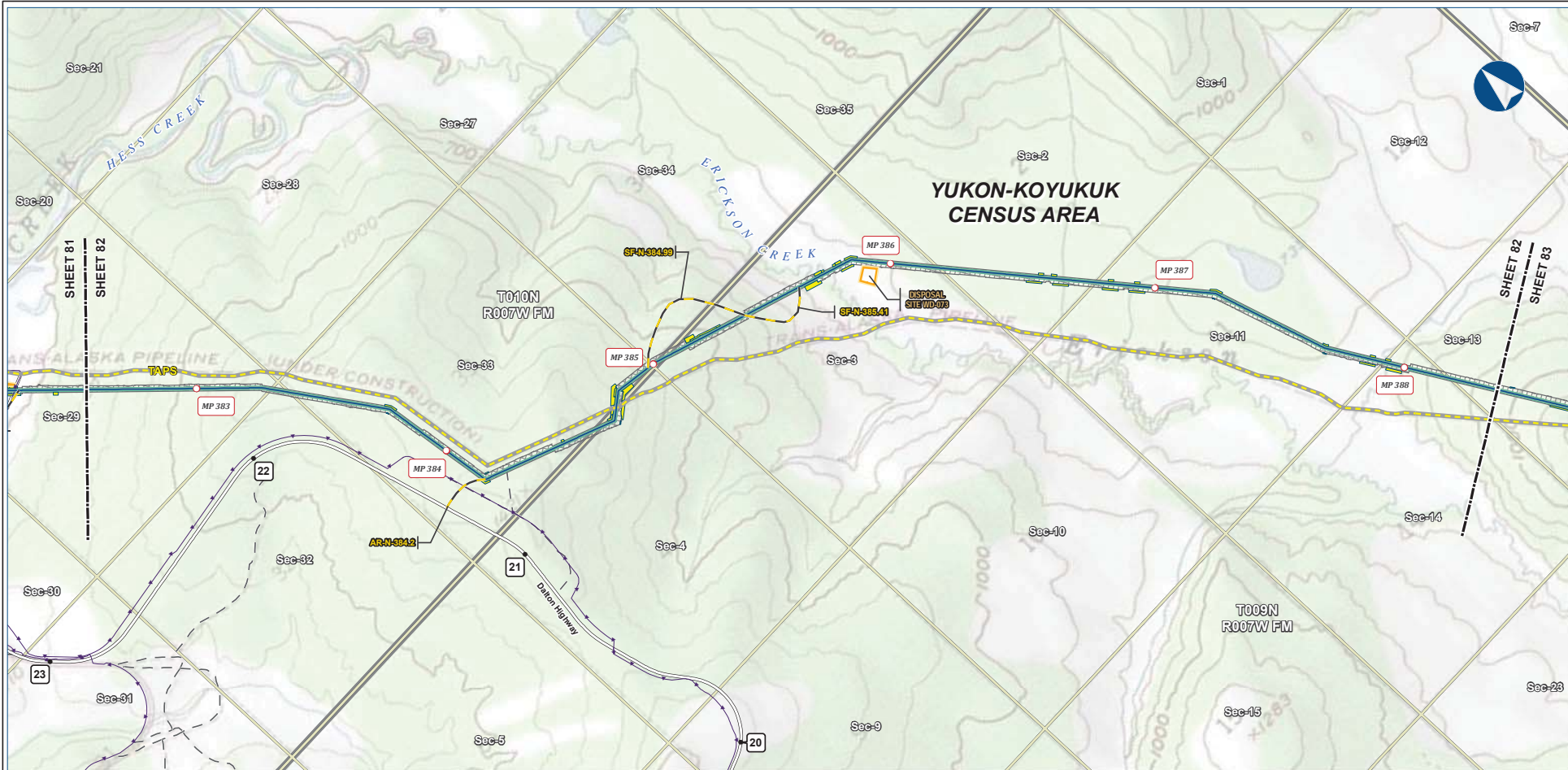
Legend		EXISTING FEATURES	
PIPELINE	Permanent ROW	Existing Roads	Off Road Trails
Mainline Pipeline	Construction ROW	TAPS	Buried Cable
Access Road - Gravel	ATWS	Section	Township
Mainline Blockvalve	Pipe Storage Yard (PSY)	Disposal Site	
Helipad	Material Site Study Area (MSSA)		

ALASKA LNG PROJECT Preliminary Facility Locations Mainline Rev C2 Route			
CENSUS AREA:	YUKON-KOYUKUK	DRAWN BY:	AGDC
STATE:	ALASKA	CHECKED BY:	
REV. NO.:		REVISION	DATE
A		ISSUED FOR REVIEW	2017-03-10
PRELIMINARY			
1:24,000			
DATE:	2017-03-10	PROJECTION:	NAD83 NRSR2007 ALASKAZONE4 FTUS 54392

DISCLAIMER

The information contained herein is for informational or planning purposes only. It does not nor should it be deemed to be an offer, request or proposals for rights or occupation of any kind. The Alaska LNG Project Participants and their respective officers, employees and agents, make no warranty, implied or otherwise, nor accept any liability, as to the accuracy or completeness of the information contained in these documents, drawings or electronic files. Do not remove or delete this note from document, drawing or electronic file.

Alaska LNG Project



B-89



Legend		EXISTING FEATURES	
Mainline Pipeline	Permanent ROW	Existing Roads	Off Road Trails
Access Road - Gravel	ATWS	TAPS	Buried Cable
Disposal Site	Construction ROW	Disposal Site	Section
		Township	

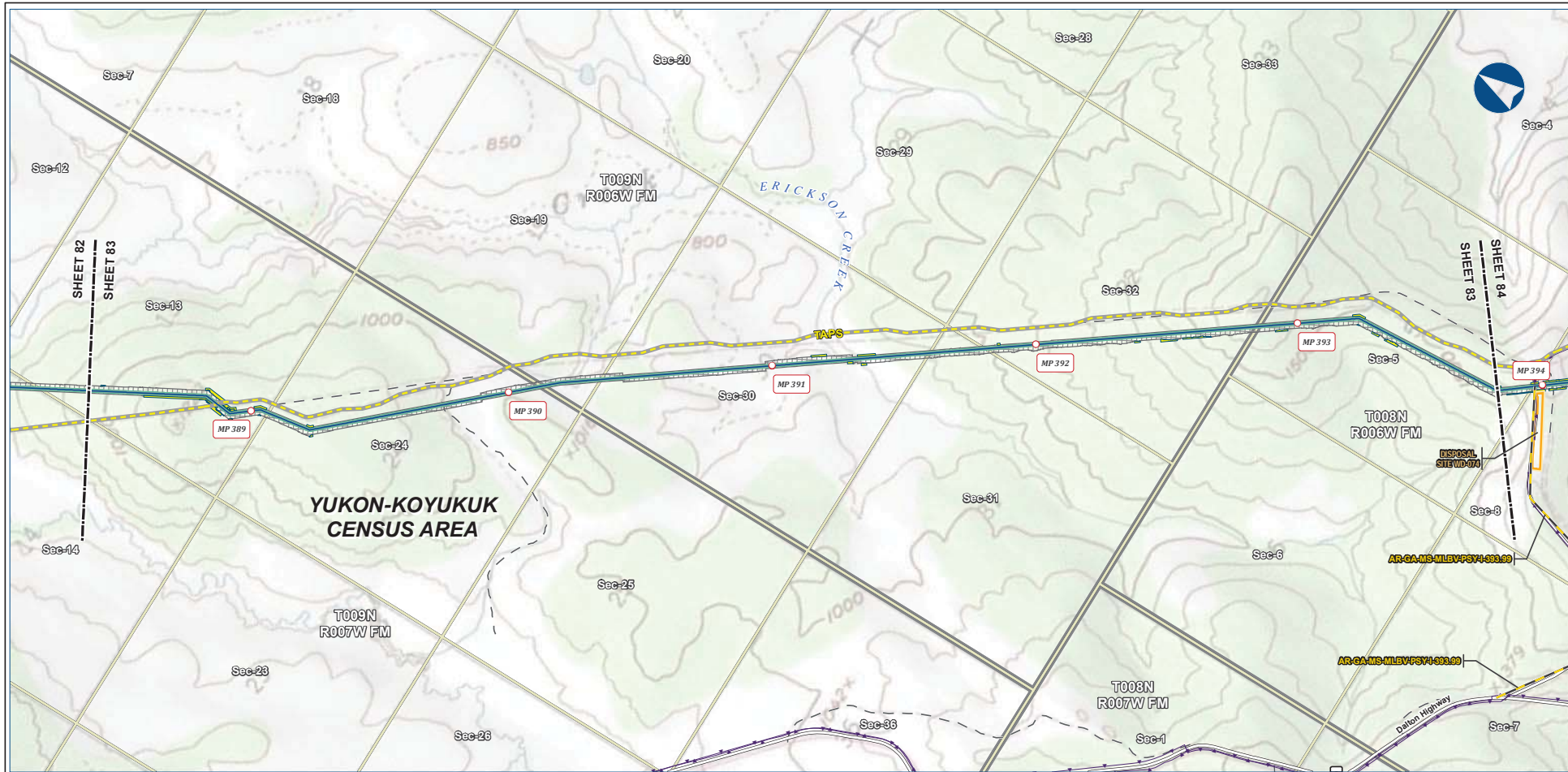
ALASKA LNG PROJECT Preliminary Facility Locations Mainline Rev C2 Route		
CENSUS AREA: YUKON-KOYUKUK	DRAWN BY: AGDC	
STATE: ALASKA	CHECKED BY:	
REV. NO.	REVISION	DATE
A	ISSUED FOR REVIEW	2017-03-10
PRELIMINARY		
1:24,000		
DATE: 2017-03-10	PROJECTION: NAD83 NSRS2007 ALASKAZONE4 FTUS S4392	

DISCLAIMER

The information contained herein is for informational or planning purposes only. It does not nor should it be deemed to be an offer, request or proposals for rights or occupation of any kind. The Alaska LNG Project Participants and their respective officers, employees and agents, make no warranty, implied or otherwise, nor accept any liability, as to the accuracy or completeness of the information contained in these documents, drawings or electronic files. Do not remove or delete this note from document, drawing or electronic file.

PRELIMINARY FACILITY LOCATIONS - MAINLINE REV C2 ROUTE

ALASKA LNG



B-90



Legend	
Mainline Pipeline	Permanent ROW
Access Road - Gravel	Construction ROW
Disposal Site	ATWS
Existing Roads	Off Road Trails
TAPS	Buried Cable
Section	Township

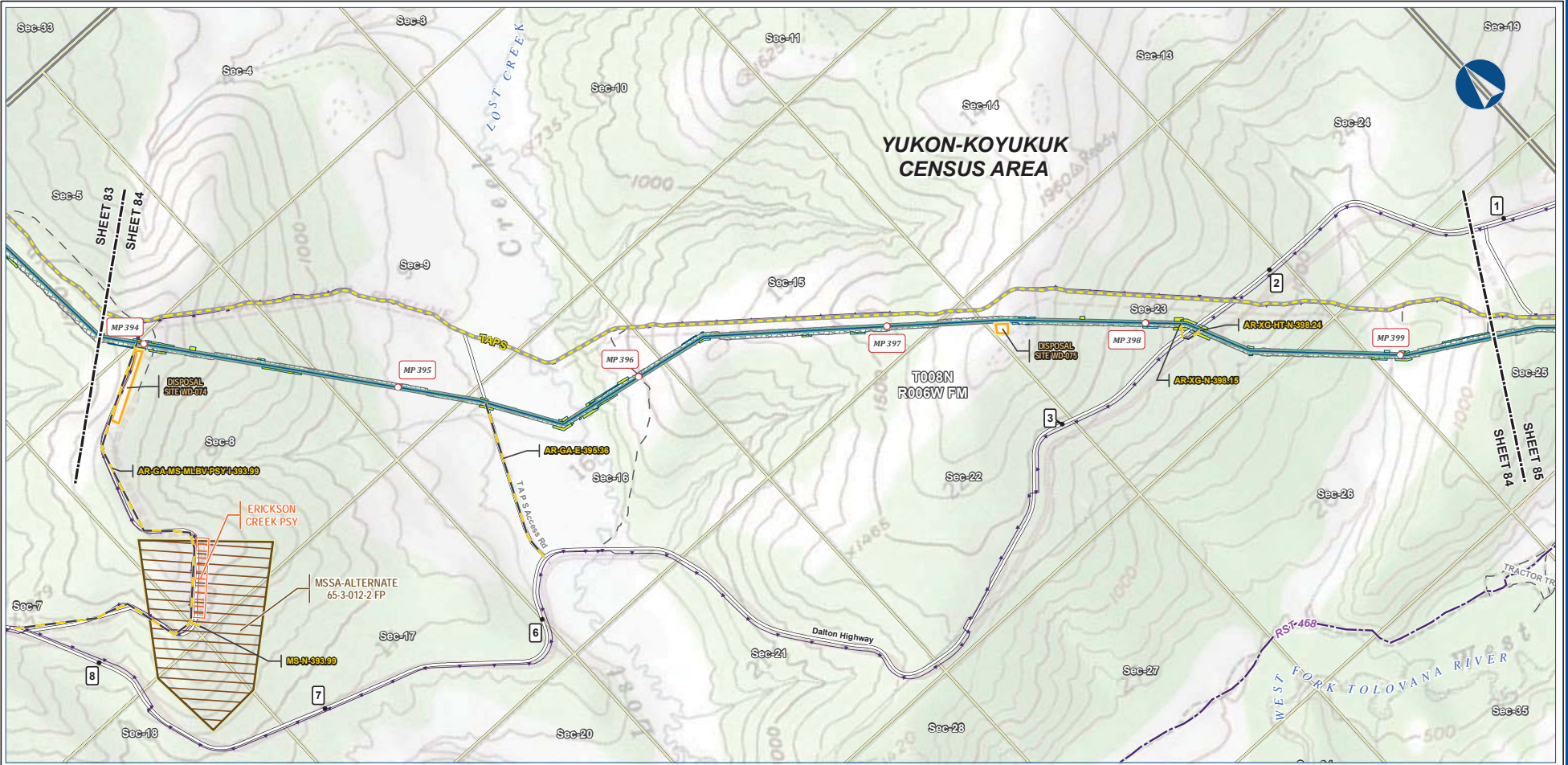
ALASKA LNG PROJECT Preliminary Facility Locations Mainline Rev C2 Route			
CENSUS AREA:	YUKON-KOYUKUK	DRAWN BY:	AGDC
STATE:	ALASKA	CHECKED BY:	
REV. NO.:	REVISION	DATE	
A	ISSUED FOR REVIEW	2017-03-10	
PRELIMINARY			
1:24,000			
DATE:	2017-03-10	PROJECTION:	NAD83 NRSR2007 ALASKAZONE4 FTUS S4392

DISCLAIMER

The information contained herein is for informational or planning purposes only. It does not nor should it be deemed to be an offer, request or proposals for rights or occupation of any kind. The Alaska LNG Project Participants and their respective officers, employees and agents, make no warranty, implied or otherwise, nor accept any liability, as to the accuracy or completeness of the information contained in these documents, drawings or electronic files. Do not remove or delete this note from document, drawing or electronic file.

Alaska LNG Project

PRELIMINARY FACILITY LOCATIONS - MAINLINE REV C2 ROUTE



B-91



Legend		EXISTING FEATURES	
	Mainline Pipeline		Existing Roads
	Construction ROW		Revised Statute 2477 Trail
	Access Road - Gravel		Off Road Trails
	ATWS		TAPS
	Pipe Storage Yard (PSY)		Buried Cable
	Disposal Site		Section
	Material Site Study Area (MSSA)		Township

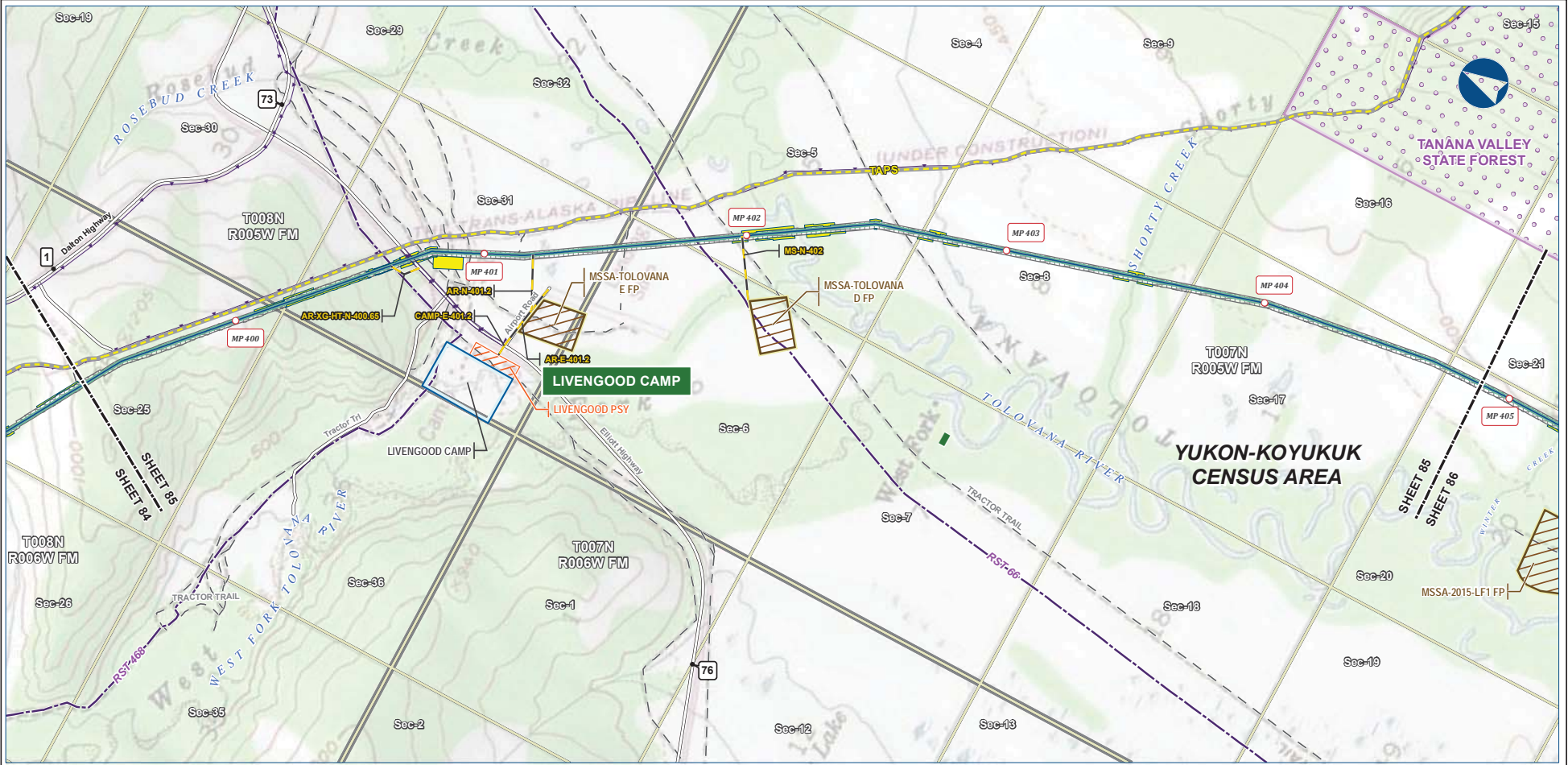
ALASKA LNG PROJECT Preliminary Facility Locations Mainline Rev C2 Route			
CENSUS AREA:	YUKON-KOYUKUK	DRAWN BY:	AGDC
STATE:	ALASKA	CHECKED BY:	
REV. NO.:	REVISION	DATE	
A	ISSUED FOR REVIEW	2017-03-10	
PRELIMINARY			
1:24,000			
DATE:	2017-03-10	PROJECTION:	NAD83 NRSR2007 ALASKAZONE4 FTUS S4392

DISCLAIMER

The information contained herein is for informational or planning purposes only. It does not nor should it be deemed to be an offer, request or proposals for rights or occupation of any kind. The Alaska LNG Project Participants and their respective officers, employees and agents, make no warranty, implied or otherwise, nor accept any liability, as to the accuracy or completeness of the information contained in these documents, drawings or electronic files. Do not remove or delete this note from document, drawing or electronic file.

PRELIMINARY FACILITY LOCATIONS - MAINLINE REV C2 ROUTE

ALASKA LNG



B-92



Alaska LNG Project

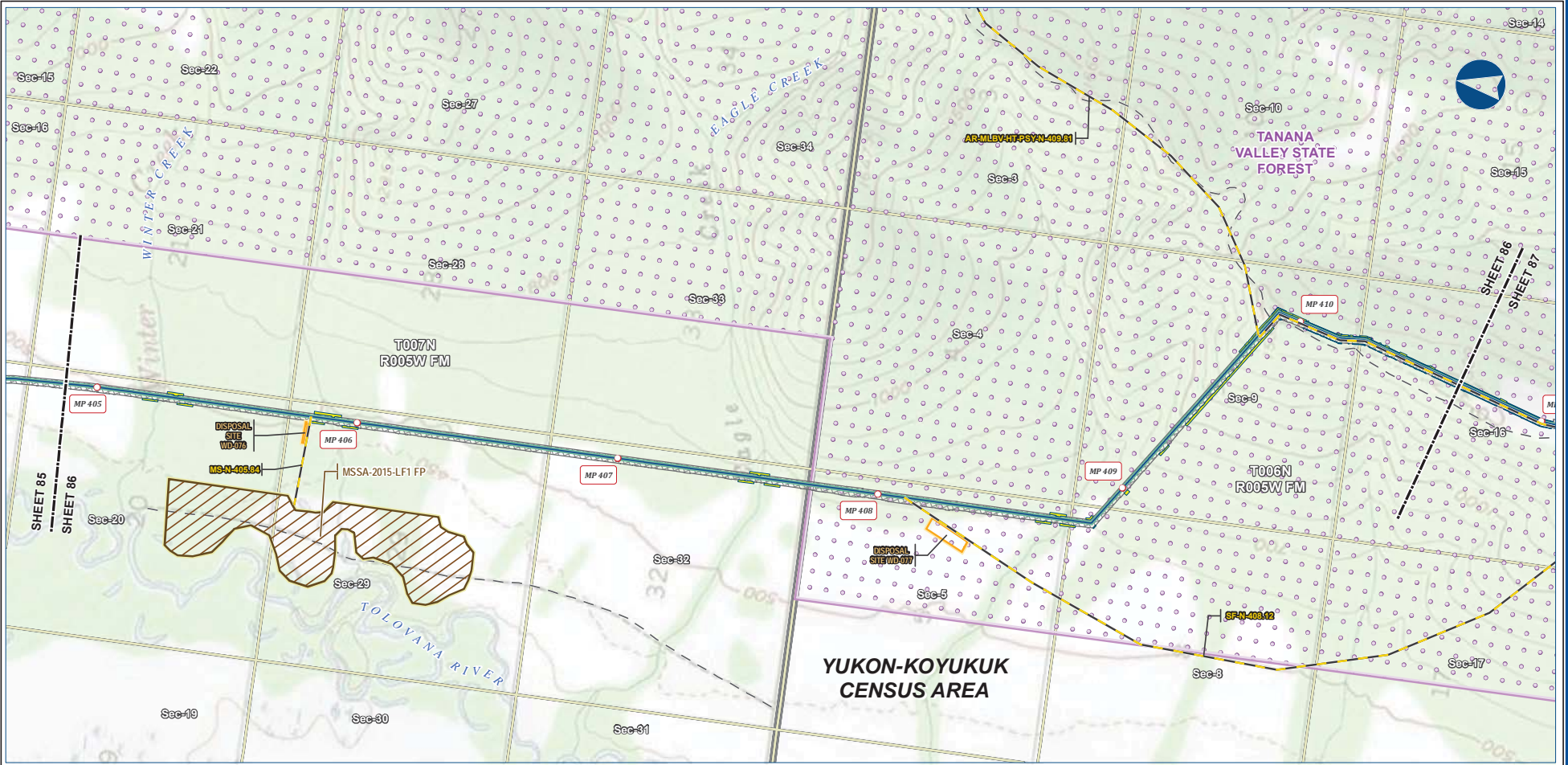
PIPELINE		EXISTING FEATURES	
	Mainline Pipeline		Existing Roads
	Construction ROW		Revised Statute 2477 Trail
	Access Road - Gravel		Off Road Trails
	Permanent ROW		TAPS
	ATWS		Buried Cable
	Off ROW Camp		Conservation Lands
	Pipe Storage Yard (PSY)		Alaska DOT Place Names
	Material Site Study Area (MSSA)		Section
			Township

ALASKA LNG PROJECT			
Preliminary Facility Locations			
Mainline Rev C2 Route			
CENSUS AREA:	YUKON-KOYUKUK	DRAWN BY:	AGDC
STATE:	ALASKA	CHECKED BY:	
REV. NO.:	REVISION	DATE	
A	ISSUED FOR REVIEW	2017-03-10	
PRELIMINARY			
1:24,000			
DATE:	2017-03-10	PROJECTION:	NAD83 NRSR2007 ALASKAZONE4 FTUS 54392

DISCLAIMER

The information contained herein is for informational or planning purposes only. It does not nor should it be deemed to be an offer, request or proposals for rights or occupation of any kind. The Alaska LNG Project Participants and their respective officers, employees and agents, make no warranty, implied or otherwise, nor accept any liability, as to the accuracy or completeness of the information contained in these documents, drawings or electronic files. Do not remove or delete this note from document, drawing or electronic file.

PRELIMINARY FACILITY LOCATIONS - MAINLINE REV C2 ROUTE



B-93



Legend		EXISTING FEATURES	
Mainline Pipeline	Permanent ROW	Existing Roads	Conservation Lands
Access Road - Gravel	Construction ROW	Off Road Trails	Section
Disposal Site	ATWS	Material Site Study Area (MSSA)	Township

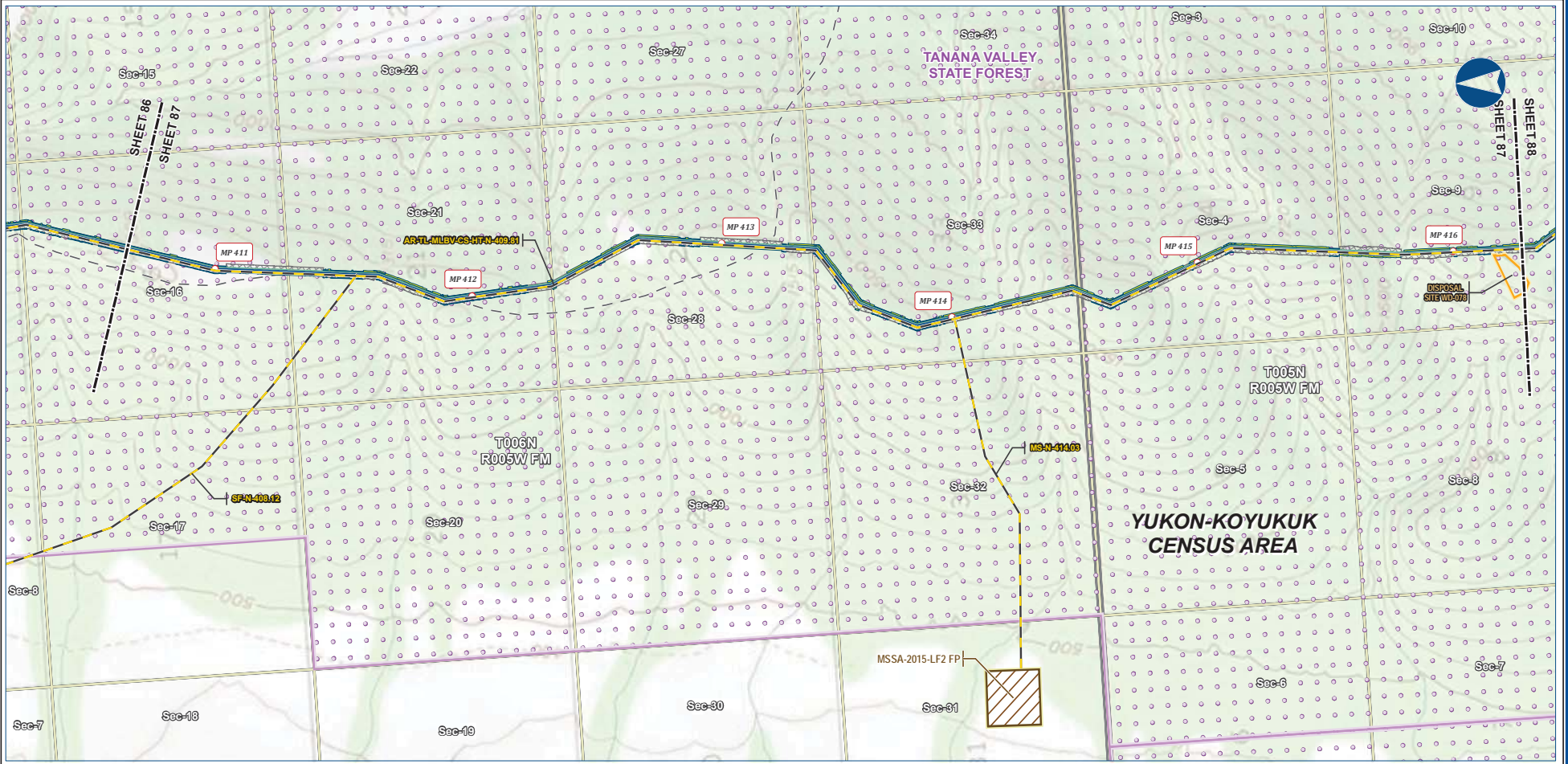
ALASKA LNG PROJECT Preliminary Facility Locations Mainline Rev C2 Route			
CENSUS AREA:	YUKON-KOYUKUK	DRAWN BY:	AGDC
STATE:	ALASKA	CHECKED BY:	
REV. NO.:	REVISION	DATE	
A	ISSUED FOR REVIEW	2017-03-10	
PRELIMINARY			
1:24,000			
DATE:	2017-03-10	PROJECTION:	NAD83 NRSR2007 ALASKAZONE4 FTUS S4392

DISCLAIMER

The information contained herein is for informational or planning purposes only. It does not nor should it be deemed to be an offer, request or proposals for rights or occupation of any kind. The Alaska LNG Project Participants and their respective officers, employees and agents, make no warranty, implied or otherwise, nor accept any liability, as to the accuracy or completeness of the information contained in these documents, drawings or electronic files. Do not remove or delete this note from document, drawing or electronic file.

PRELIMINARY FACILITY LOCATIONS - MAINLINE REV C2 ROUTE

ALASKA LNG



B-94



Legend

PIPELINE	Permanent ROW	EXISTING FEATURES
Mainline Pipeline	Construction ROW	Existing Roads
Access Road - Gravel	ATWS	Off Road Trails
	Disposal Site	Conservation Lands
	Material Site Study Area (MSSA)	Section
		Township

ALASKA LNG PROJECT
Preliminary Facility Locations
Mainline Rev C2 Route

CENSUS AREA: YUKON-KOYUKUK	DRAWN BY: AGDC
STATE: ALASKA	CHECKED BY:
REV. NO.:	REVISION
A	ISSUED FOR REVIEW
	DATE
	2017-03-10
PRELIMINARY	
1:24,000	
0 5 10 Miles	
DATE: 2017-03-10	PROJECTION: NAD83 NRSR2007 ALASKAZONE4 FTUS S4392

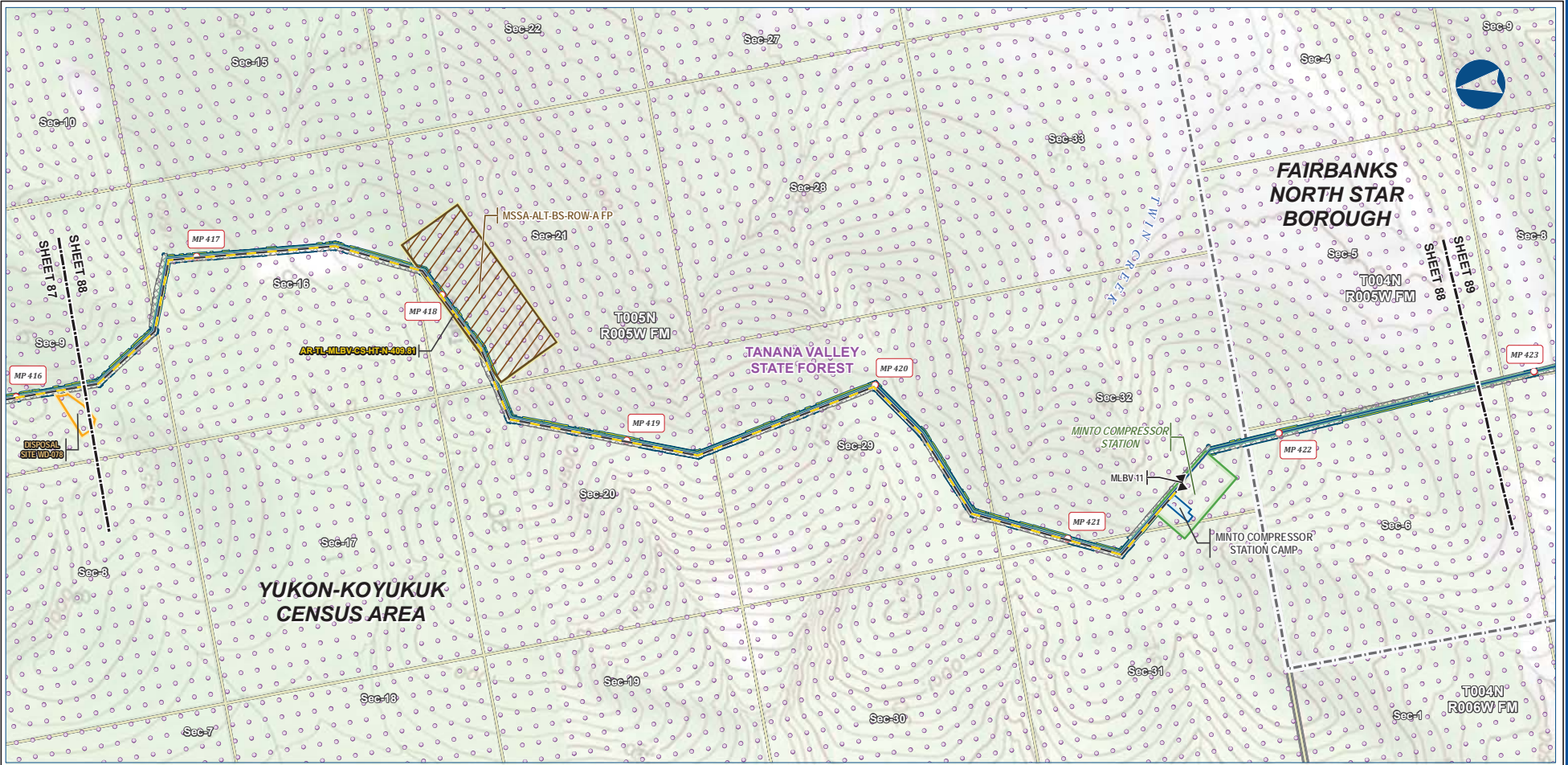
DISCLAIMER

The information contained herein is for informational or planning purposes only. It does not nor should it be deemed to be an offer, request or proposals for rights or occupation of any kind. The Alaska LNG Project Participants and their respective officers, employees and agents, make no warranty, implied or otherwise, nor accept any liability, as to the accuracy or completeness of the information contained in these documents, drawings or electronic files. Do not remove or delete this note from document, drawing or electronic file.

Alaska LNG Project

PRELIMINARY FACILITY LOCATIONS - MAINLINE REV C2 ROUTE

ALASKA LNG



B-95



Legend		EXISTING FEATURES	
Mainline Pipeline	Permanent ROW	Existing Roads	Borough / Census Area
Access Road - Gravel	Construction ROW	Conservation Lands	Section
Mainline Blockvalve	ATWS	Township	
	Compressor Station		
	Camp		
	Disposal Site		
	Material Site Study Area (MSSA)		

ALASKA LNG PROJECT			
Preliminary Facility Locations			
Mainline Rev C2 Route			
CENSUS AREA:	YUKON-KOYUKUK	DRAWN BY:	AGDC
STATE:	ALASKA	CHECKED BY:	
REV. NO.:		REVISION	DATE
A		ISSUED FOR REVIEW	2017-03-10
PRELIMINARY			
1:24,000			
0 5 10 Miles			
DATE:	2017-03-10	PROJECTION:	NAD83 NSRS2007 ALASKAZONE4 FTUS S4392

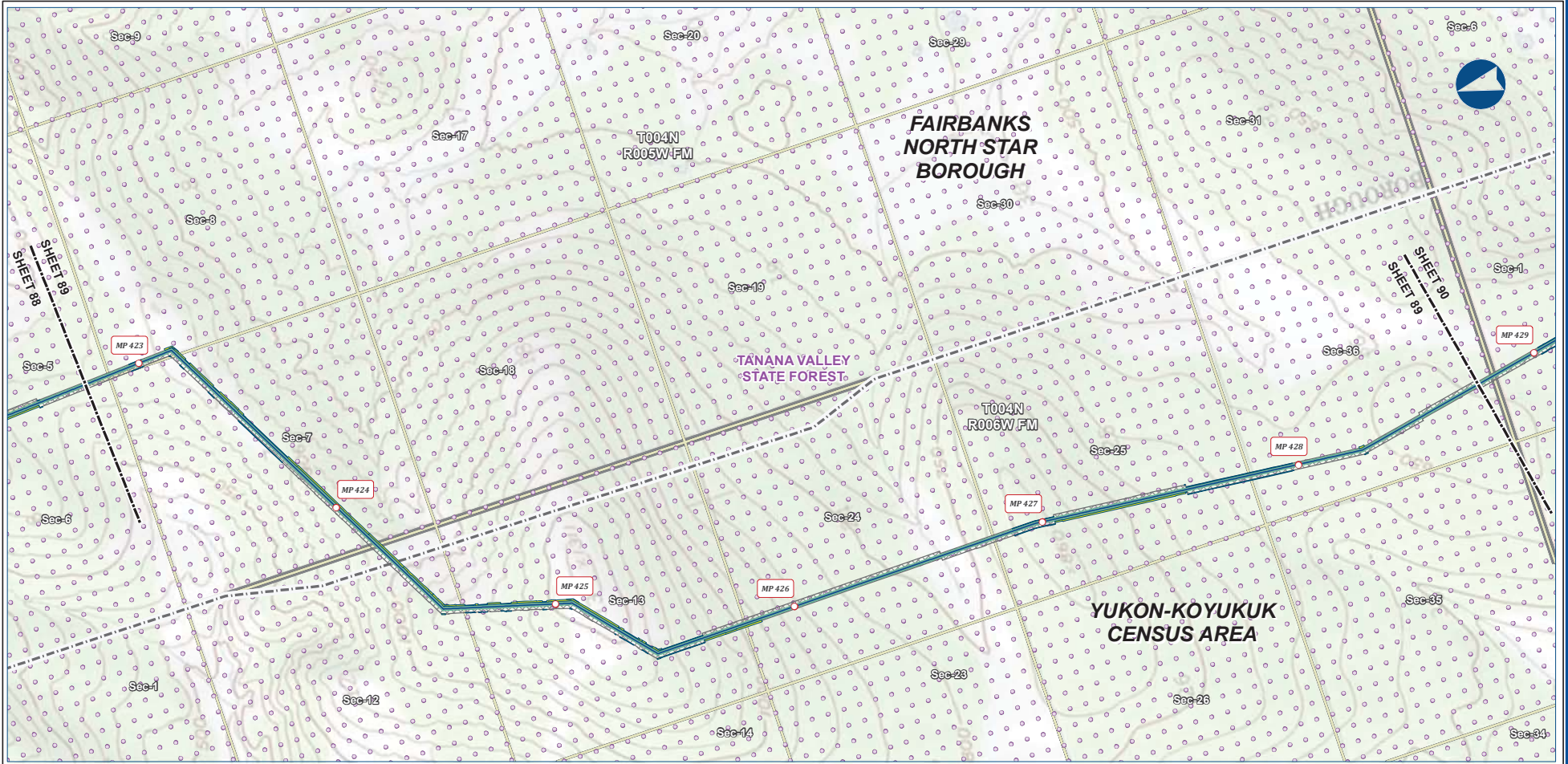
DISCLAIMER

The information contained herein is for informational or planning purposes only. It does not nor should it be deemed to be an offer, request or proposals for rights or occupation of any kind. The Alaska LNG Project Participants and their respective officers, employees and agents, make no warranty, implied or otherwise, nor accept any liability, as to the accuracy or completeness of the information contained in these documents, drawings or electronic files. Do not remove or delete this note from document, drawing or electronic file.

Alaska LNG Project

PRELIMINARY FACILITY LOCATIONS - MAINLINE REV C2 ROUTE

ALASKA LNG



B-96



Legend

Mainline Pipeline	Permanent ROW	Existing Roads
Construction ROW	ATWS	Borough / Census Area
		Conservation Lands
		Section
		Township

ALASKA LNG PROJECT
Preliminary Facility Locations
Mainline Rev C2 Route

CENSUS AREA: YUKON-KOYUKUK	DRAWN BY: AGDC	
STATE: ALASKA	CHECKED BY:	
REV. NO.:	REVISION	DATE
A	ISSUED FOR REVIEW	2017-03-10
PRELIMINARY		
1:24,000		
0 5 10 Miles		
DATE: 2017-03-10	PROJECTION: NAD83 NSRS2007 ALASKAZONE4 FTUS 54392	DWG: RR-1_APPENDIX_A1_MAINLINE_TOPO_REV_C2_CL

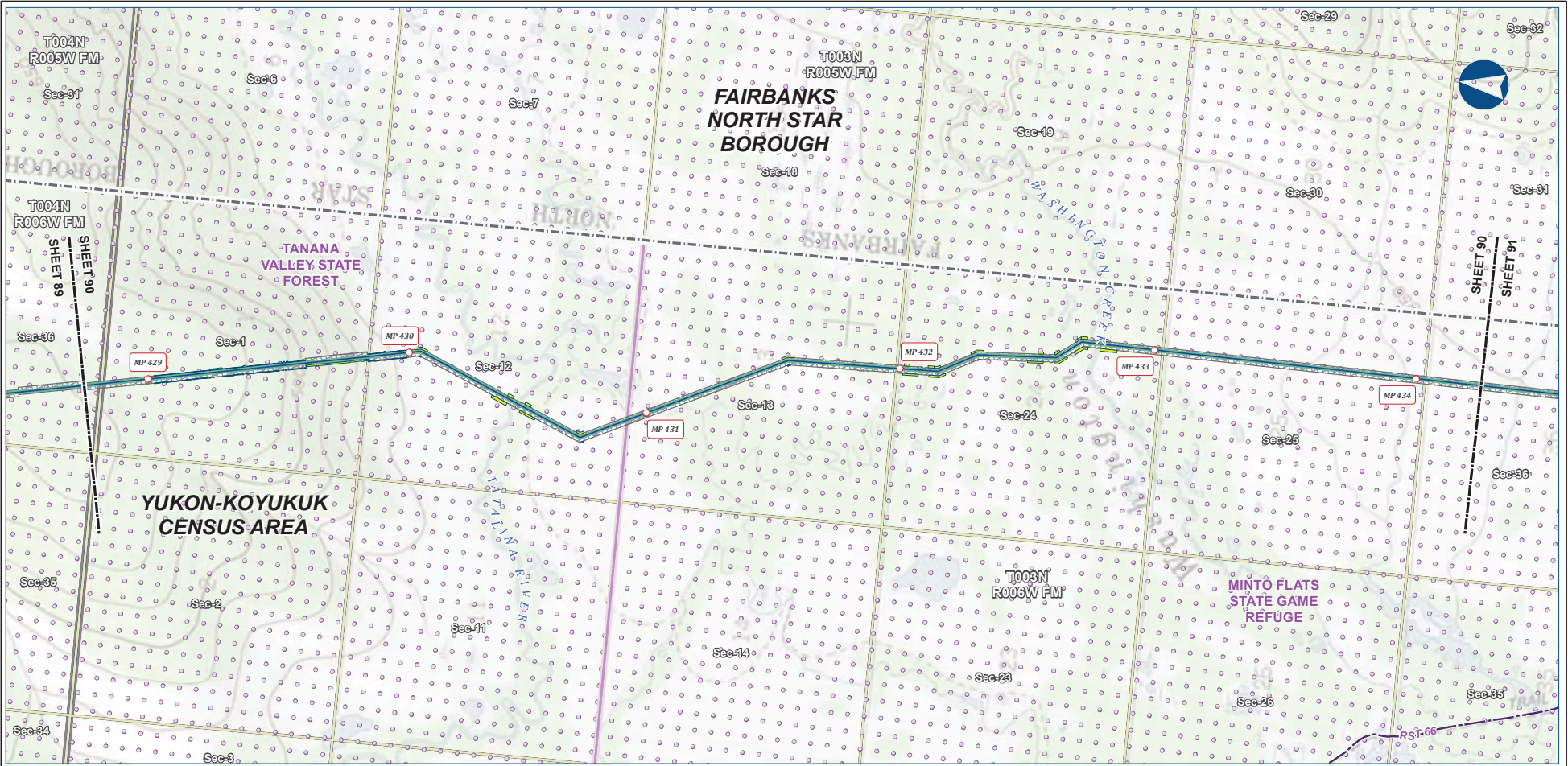
DISCLAIMER

The information contained herein is for informational or planning purposes only. It does not nor should it be deemed to be an offer, request or proposals for rights or occupation of any kind. The Alaska LNG Project Participants and their respective officers, employees and agents, make no warranty, implied or otherwise, nor accept any liability, as to the accuracy or completeness of the information contained in these documents, drawings or electronic files. Do not remove or delete this note from document, drawing or electronic file.

Alaska LNG Project

PRELIMINARY FACILITY LOCATIONS - MAINLINE REV C2 ROUTE

ALASKA LNG



B-97



Legend

PIPELINE
 - Mainline Pipeline

EXISTING FEATURES
 - Existing Roads
 - Revised Statute 2477 Trail
 - Borough / Census Area
 - Conservation Lands
 - Section
 - Township

PERMANENT ROW
 - Permanent ROW

CONSTRUCTION ROW
 - Construction ROW

ATWS
 - ATWS

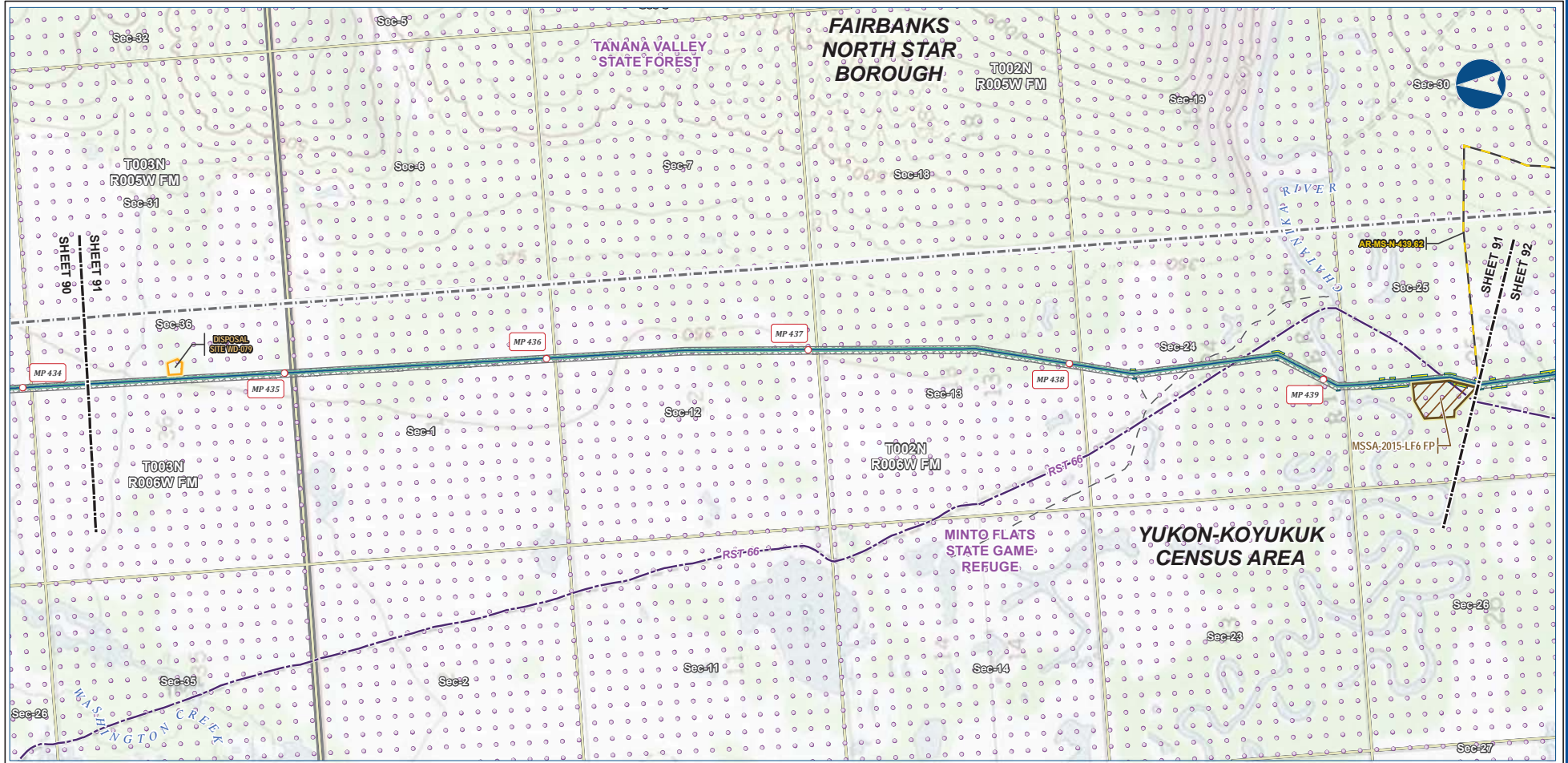
ALASKA LNG PROJECT
 Preliminary Facility Locations
 Mainline Rev C2 Route

CENSUS AREA: YUKON-KOYUKUK	DRAWN BY: AGDC	
STATE: ALASKA	CHECKED BY:	
REV. NO.:	REVISION	DATE
A	ISSUED FOR REVIEW	2017-03-10
PRELIMINARY		
1:24,000		
0 5 10 Miles		
DATE: 2017-03-10	PROJECTION: NAD83 NSRS2007 ALASKAZONE4 FTUS S4392	DWG: RR-1_APPENDIX_A1_MAINLINE_TOPO_REV_C2_CL

DISCLAIMER

The information contained herein is for informational or planning purposes only. It does not nor should it be deemed to be an offer, request or proposals for rights or occupation of any kind. The Alaska LNG Project Participants and their respective officers, employees and agents, make no warranty, implied or otherwise, nor accept any liability, as to the accuracy or completeness of the information contained in these documents, drawings or electronic files. Do not remove or delete this note from document, drawing or electronic file.

Alaska LNG Project



B-98



Legend

Mainline Pipeline	Permanent ROW	EXISTING FEATURES
Access Road - Gravel	Construction ROW	Existing Roads
	ATWS	Revised Statute 2477 Trail
	Disposal Site	Off Road Trails
	Material Site Study Area (MSSA)	Borough / Census Area
		Conservation Lands
		Section
		Township

ALASKA LNG PROJECT
Preliminary Facility Locations
Mainline Rev C2 Route

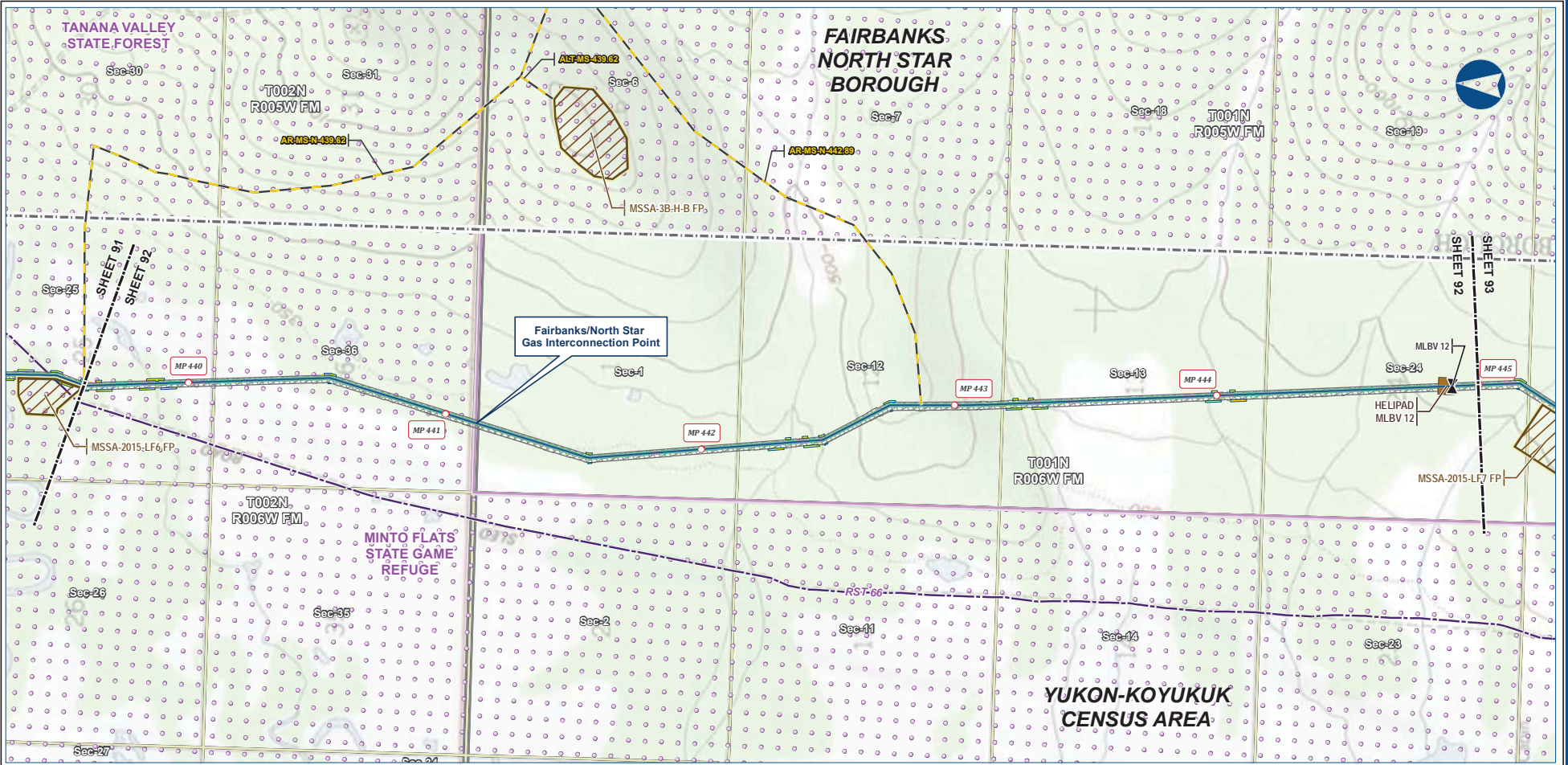
CENSUS AREA: YUKON-KOYUKUK	DRAWN BY: AGDC	
STATE: ALASKA	CHECKED BY:	
REV. NO.:	REVISION	DATE
A	ISSUED FOR REVIEW	2017-03-10
PRELIMINARY		
1:24,000		
DATE: 2017-03-10 PROJECTION: NAD83 NSRS2007 ALASKAZONE4 FTUS 54392		

DISCLAIMER

The information contained herein is for informational or planning purposes only. It does not nor should it be deemed to be an offer, request or proposals for rights or occupation of any kind. The Alaska LNG Project Participants and their respective officers, employees and agents, make no warranty, implied or otherwise, nor accept any liability, as to the accuracy or completeness of the information contained in these documents, drawings or electronic files. Do not remove or delete this note from document, drawing or electronic file.

PRELIMINARY FACILITY LOCATIONS - MAINLINE REV C2 ROUTE

ALASKA LNG



B-99



Legend

Mainline Pipeline	Permanent ROW	Existing Roads
Access Road - Gravel	Construction ROW	Revised Statute 2477 Trail
Mainline Blockvalve	ATWS	Borough / Census Area
Helipad	Material Site Study Area (MSSA)	Conservation Lands
		Section
		Township

ALASKA LNG PROJECT
Preliminary Facility Locations
Mainline Rev C2 Route

CENSUS AREA: YUKON-KOYUKUK	DRAWN BY: AGDC
STATE: ALASKA	CHECKED BY:
REV. NO.: A	ISSUED FOR REVIEW
REVISION	DATE
	2017-03-10
PRELIMINARY	
1:24,000	
DATE: 2017-03-10	PROJECTION: NAD83 NSRS2007 ALASKAZONE4 FTUS 54392

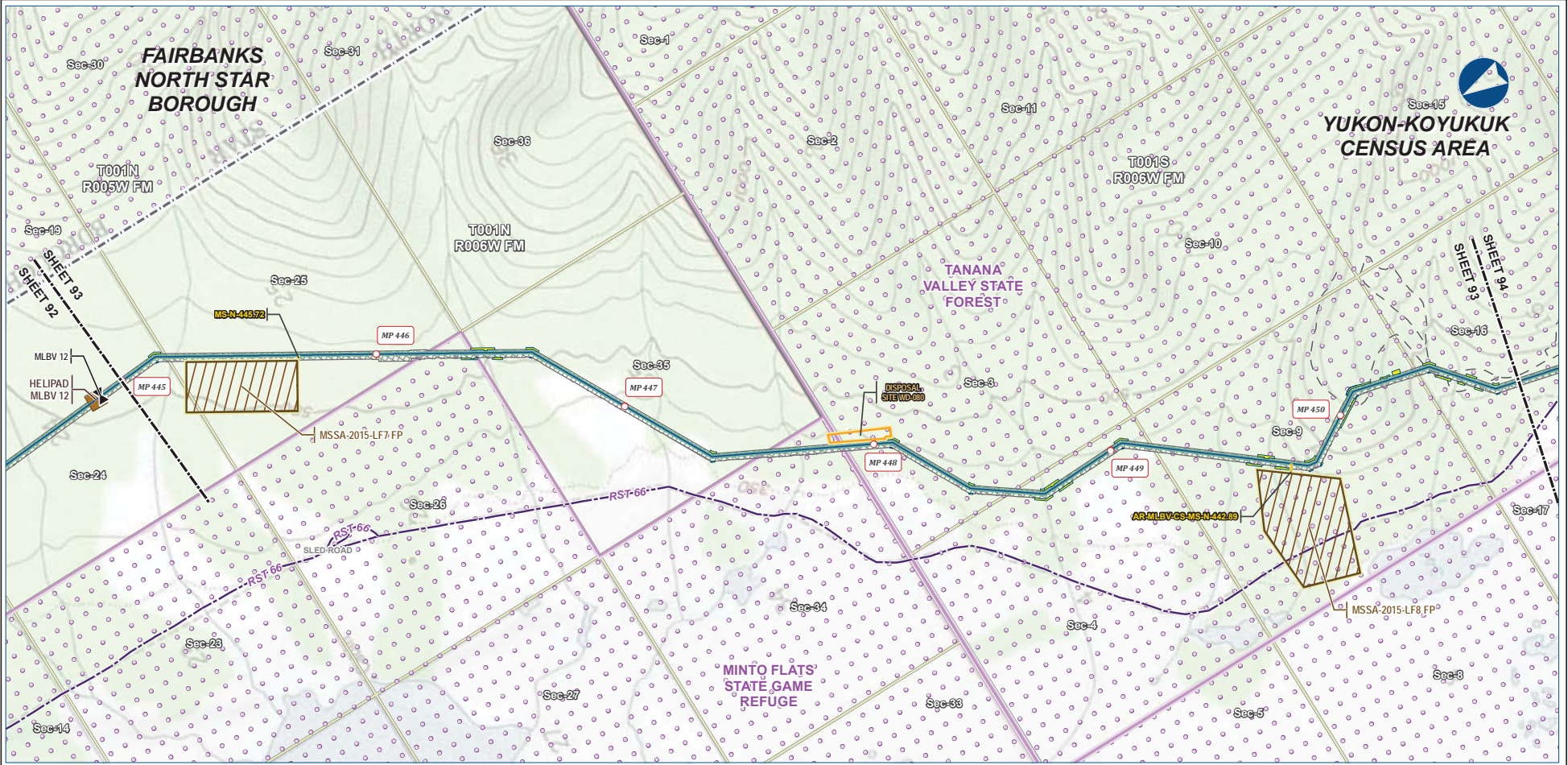
DISCLAIMER

The information contained herein is for informational or planning purposes only. It does not nor should it be deemed to be an offer, request or proposals for rights or occupation of any kind. The Alaska LNG Project Participants and their respective officers, employees and agents, make no warranty, implied or otherwise, nor accept any liability, as to the accuracy or completeness of the information contained in these documents, drawings or electronic files. Do not remove or delete this note from document, drawing or electronic file.

Alaska LNG Project

PRELIMINARY FACILITY LOCATIONS - MAINLINE REV C2 ROUTE

ALASKA LNG



B-100



Legend		EXISTING FEATURES	
	Mainline Pipeline		Existing Roads
	Access Road - Gravel		Revised Statute 2477 Trail
	Mainline Blockvalve		Off Road Trails
	Helipad		Borough / Census Area
	Permanent ROW		Conservation Lands
	Construction ROW		Section
	ATWS		Township
	Disposal Site		
	Material Site Study Area (MSSA)		

ALASKA LNG PROJECT Preliminary Facility Locations Mainline Rev C2 Route			
CENSUS AREA: YUKON-KOYUKUK	DRAWN BY: AGDC	STATE: ALASKA	CHECKED BY:
REV. NO.:	REVISION	DATE	
A	ISSUED FOR REVIEW	2017-03-10	
PRELIMINARY			
1:24,000			
DATE: 2017-03-10 PROJECTION: NAD83 NSRS2007 ALASKAZONE4 FTUS 54392			

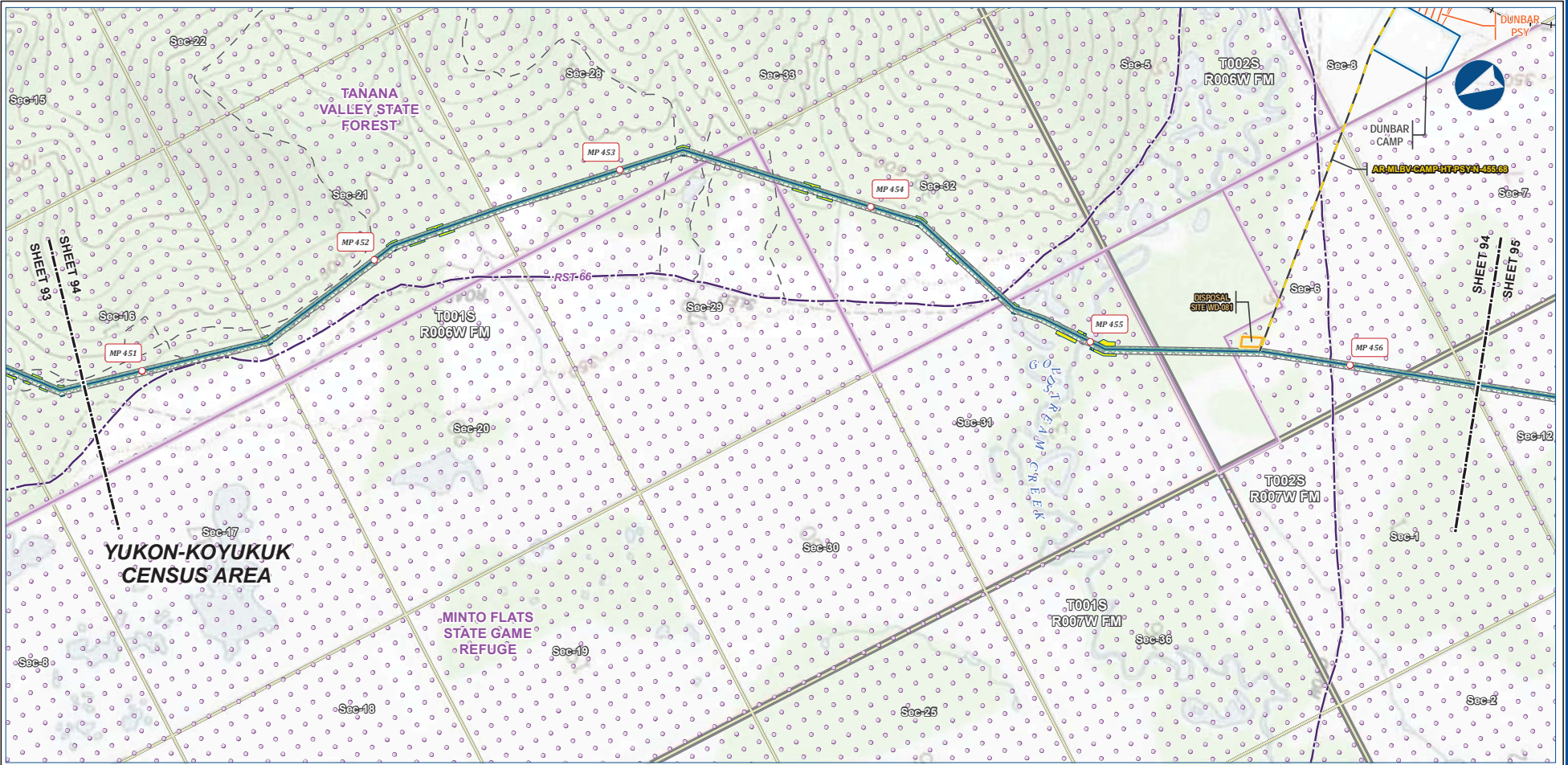
DISCLAIMER

The information contained herein is for informational or planning purposes only. It does not nor should it be deemed to be an offer, request or proposals for rights or occupation of any kind. The Alaska LNG Project Participants and their respective officers, employees and agents, make no warranty, implied or otherwise, nor accept any liability, as to the accuracy or completeness of the information contained in these documents, drawings or electronic files. Do not remove or delete this note from document, drawing or electronic file.

Alaska LNG Project

PRELIMINARY FACILITY LOCATIONS - MAINLINE REV C2 ROUTE

ALASKA LNG



B-101



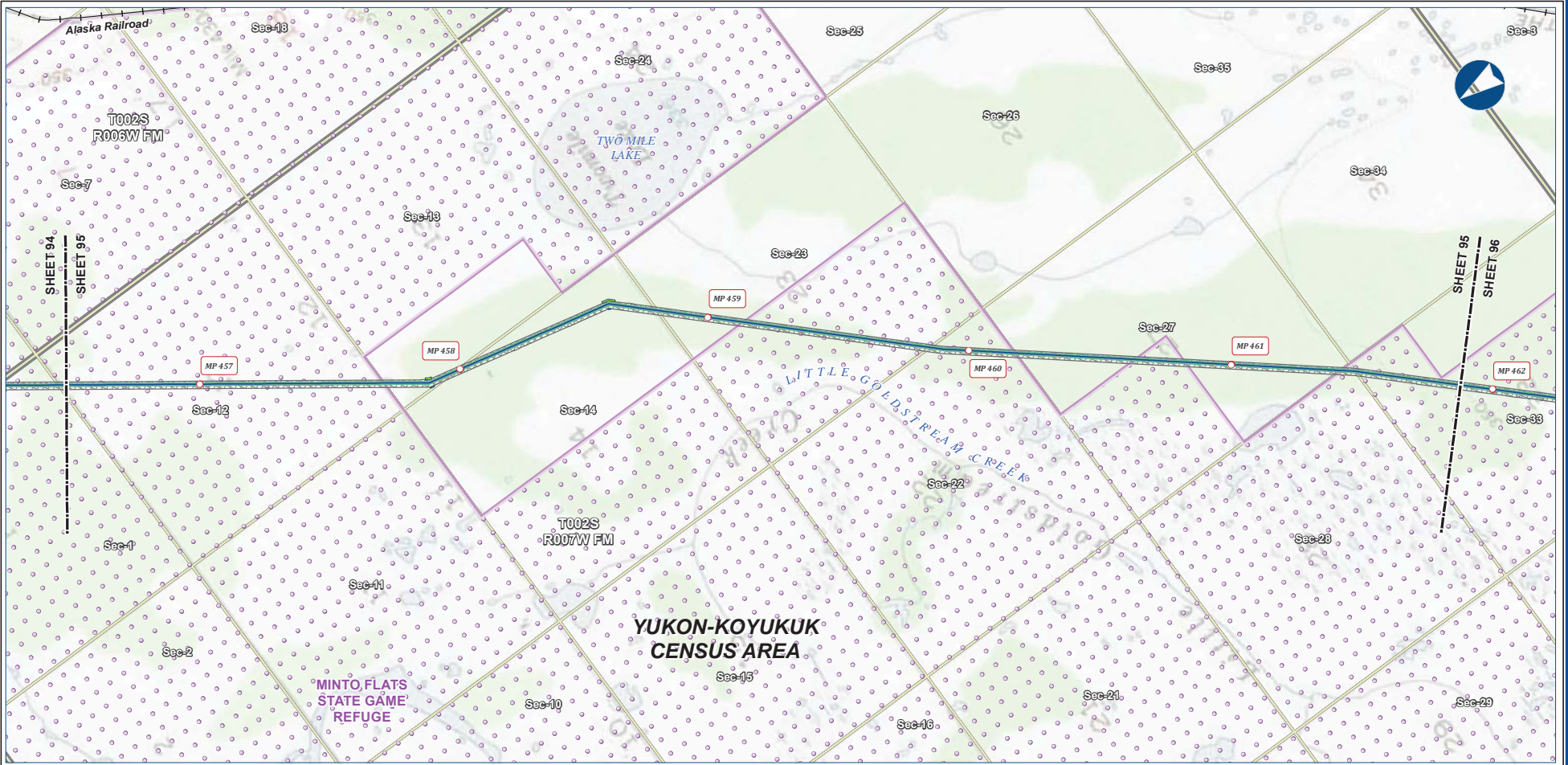
Legend		EXISTING FEATURES	
Mainline Pipeline	Permanent ROW	Existing Roads	Railroad
Access Road - Gravel	Construction ROW	Revised Statute 2477 Trail	Off Road Trails
	ATWS	Conservation Lands	Section
	Off ROW Camp	Pipe Storage Yard (PSY)	Township
	Disposal Site		

ALASKA LNG PROJECT Preliminary Facility Locations Mainline Rev C2 Route			
CENSUS AREA:	YUKON-KOYUKUK	DRAWN BY:	AGDC
STATE:	ALASKA	CHECKED BY:	
REV. NO.	REVISION	DATE	
A	ISSUED FOR REVIEW	2017-03-10	
PRELIMINARY			
1:24,000			
DATE:	2017-03-10	PROJECTION:	NAD83 NRSR2007 ALASKAZONE4 FTUS S4392

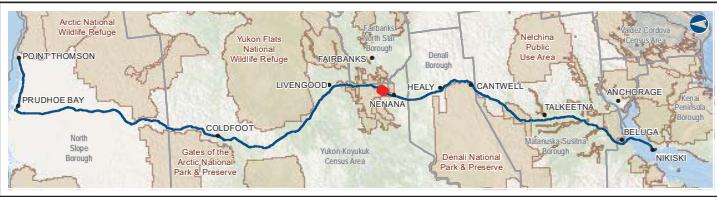
DISCLAIMER

The information contained herein is for informational or planning purposes only. It does not nor should it be deemed to be an offer, request or proposals for rights or occupation of any kind. The Alaska LNG Project Participants and their respective officers, employees and agents, make no warranty, implied or otherwise, nor accept any liability, as to the accuracy or completeness of the information contained in these documents, drawings or electronic files. Do not remove or delete this note from document, drawing or electronic file.

Alaska LNG Project



B-102



Legend

Mainline Pipeline	Permanent ROW	Existing Roads
Construction ROW	ATWS	Railroad
		Conservation Lands
		Section
		Township

ALASKA LNG PROJECT
Preliminary Facility Locations
Mainline Rev C2 Route

CENSUS AREA: YUKON-KOYUKUK	DRAWN BY: AGDC
STATE: ALASKA	CHECKED BY:
REV. NO.: A	REVISION: ISSUED FOR REVIEW
	DATE: 2017-03-10
PRELIMINARY	
1:24,000	
0 1/4 1/2 3/4 1 MILE	
DATE: 2017-03-10	PROJECTION: NAD83 NRSR2007 ALASKAZONE4 FTUS 54392

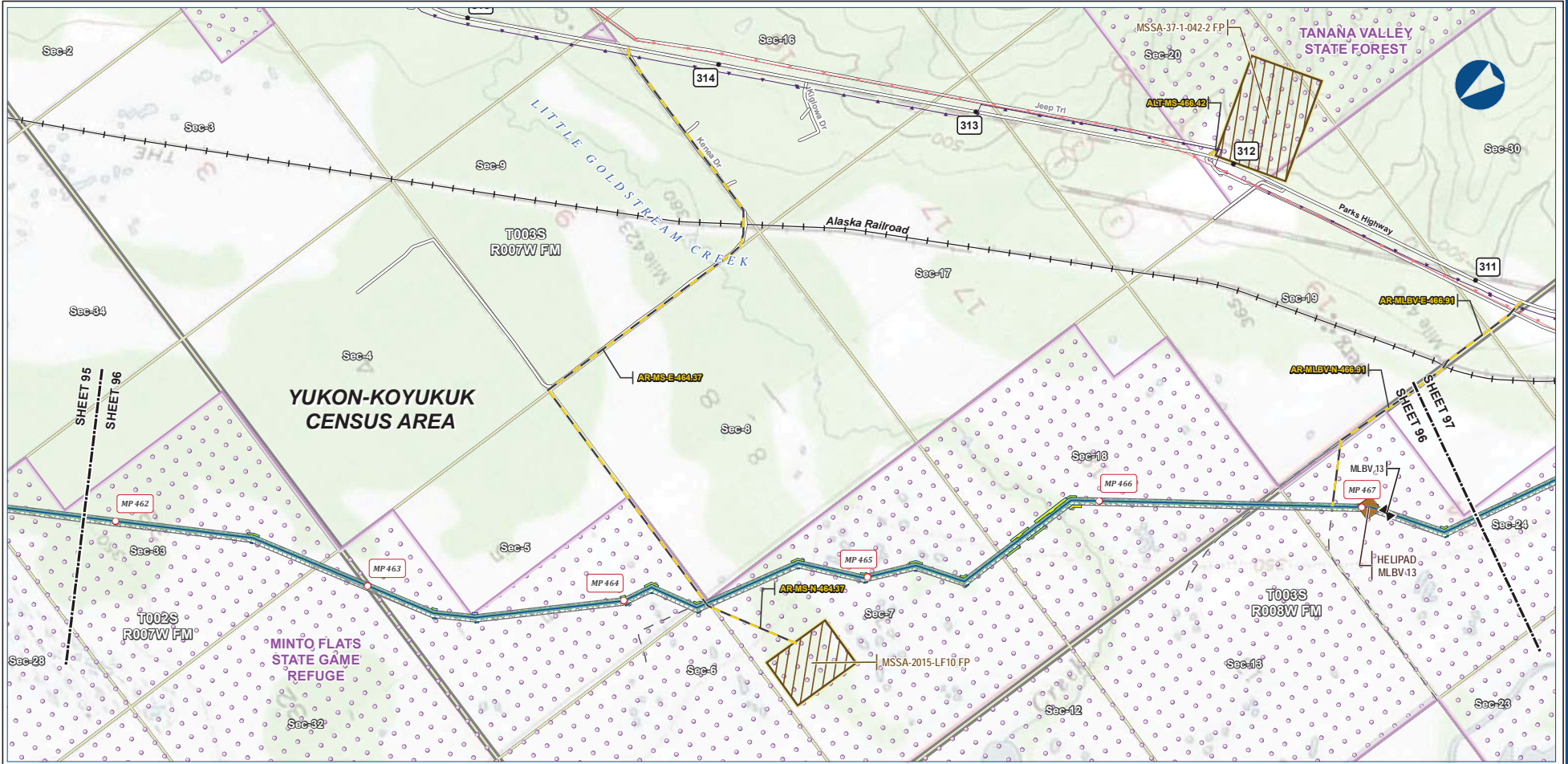
DISCLAIMER

The information contained herein is for informational or planning purposes only. It does not nor should it be deemed to be an offer, request or proposals for rights or occupation of any kind. The Alaska LNG Project Participants and their respective officers, employees and agents, make no warranty, implied or otherwise, nor accept any liability, as to the accuracy or completeness of the information contained in these documents, drawings or electronic files. Do not remove or delete this note from document, drawing or electronic file.

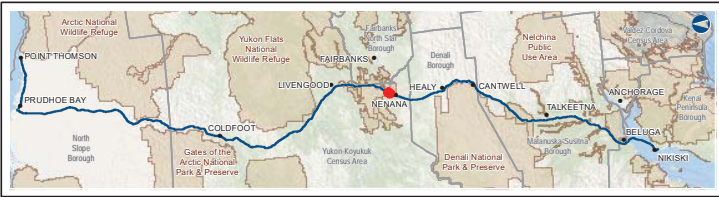
DWG: RR-1_APPENDIX_A1_MAINLINE_TOPO_REV_C2_CL SHEET: 95

PRELIMINARY FACILITY LOCATIONS - MAINLINE REV C2 ROUTE

ALASKA LNG



B-103



Legend		EXISTING FEATURES	
Mainline Pipeline	Permanent ROW	Existing Roads	Railroad
Access Road - Gravel	Construction ROW	Off Road Trails	Buried Cable
Mainline Blockvalve	ATWS	Overhead Powerline	Conservation Lands
Helipad	Material Site Study Area (MSSA)	Section	Township

ALASKA LNG PROJECT Preliminary Facility Locations Mainline Rev C2 Route			
CENSUS AREA:	YUKON-KOYUKUK	DRAWN BY:	AGDC
STATE:	ALASKA	CHECKED BY:	
REV. NO.:	REVISION	DATE	
A	ISSUED FOR REVIEW	2017-03-10	
PRELIMINARY			
1:24,000			
DATE:	2017-03-10	PROJECTION:	NAD83 NRSR2007 ALASKAZONE4 FTUS 54392

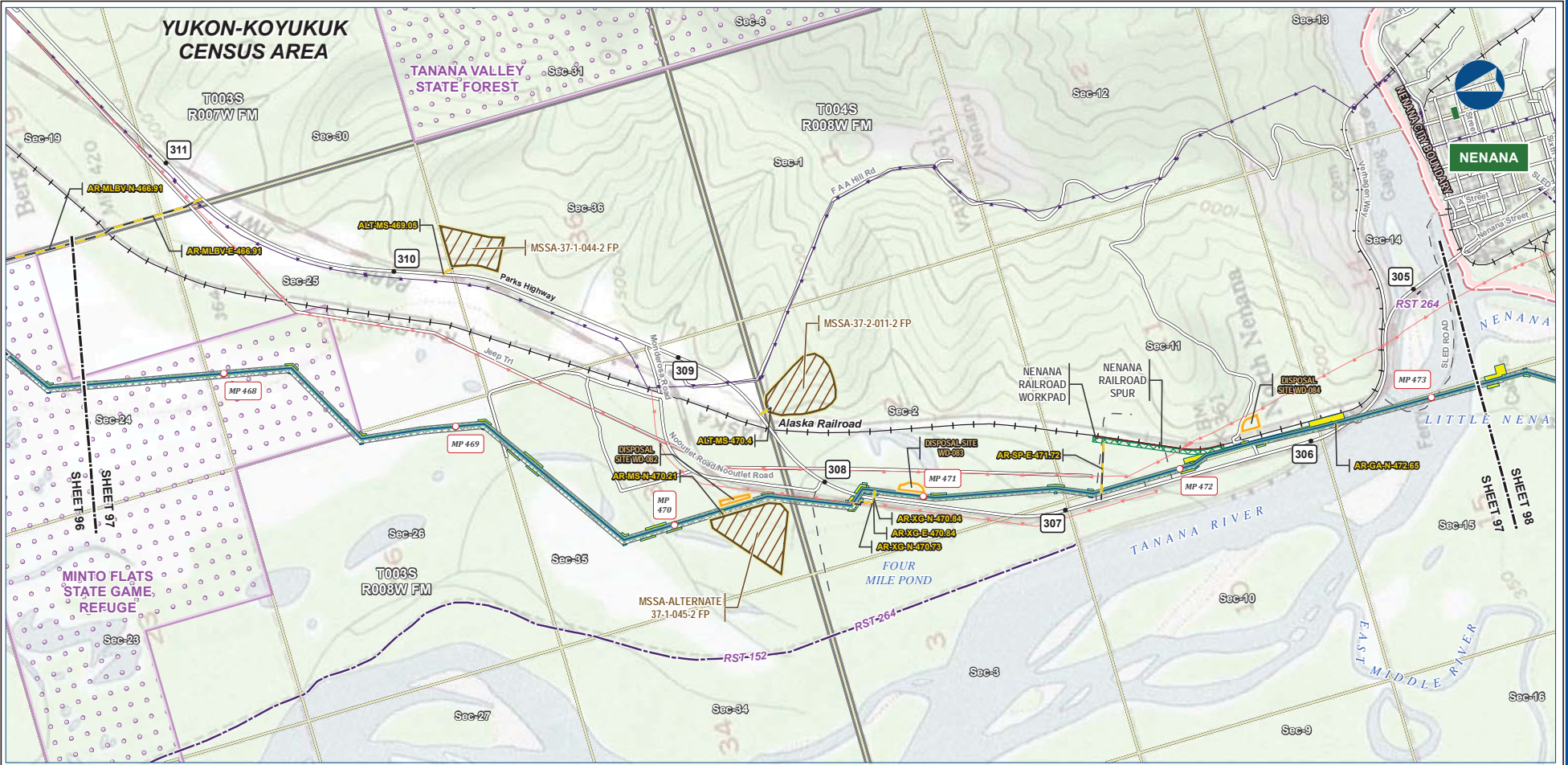
DISCLAIMER

The information contained herein is for informational or planning purposes only. It does not nor should it be deemed to be an offer, request or proposals for rights or occupation of any kind. The Alaska LNG Project Participants and their respective officers, employees and agents, make no warranty, implied or otherwise, nor accept any liability, as to the accuracy or completeness of the information contained in these documents, drawings or electronic files. Do not remove or delete this note from document, drawing or electronic file.

Alaska LNG Project

PRELIMINARY FACILITY LOCATIONS - MAINLINE REV C2 ROUTE

ALASKA LNG



B-104



PIPELINE		EXISTING FEATURES	
	Mainline Pipeline		Existing Roads
	Construction ROW		Railroad
	Access Road - Gravel		Revised Statute 2477 Trail
	Mainline Blockvale		Off Road Trails
	Permanent ROW		Buried Cable
	ATWS		Overhead Powerline
	Railroad Workpad		Incorporated City Boundary
	Railroad Spur		Conservation Lands
	Disposal Site		Alaska DOT Place Names
	Material Site Study Area (MSSA)		Section
			Township

ALASKA LNG PROJECT Preliminary Facility Locations Mainline Rev C2 Route			
CENSUS AREA: YUKON-KOYUKUK	DRAWN BY: AGDC	STATE: ALASKA	CHECKED BY:
REV. NO.:	REVISION	DATE	
A	ISSUED FOR REVIEW	2017-03-10	
PRELIMINARY			
1:24,000			
DATE: 2017-03-10	PROJECTION: NAD83 NSRS2007 ALASKAZONE4 FTUS 54392	DWG: RR-1_APPENDIX_A1_MAINLINE_TOPO_REV_C2_CL	SHEET: 97

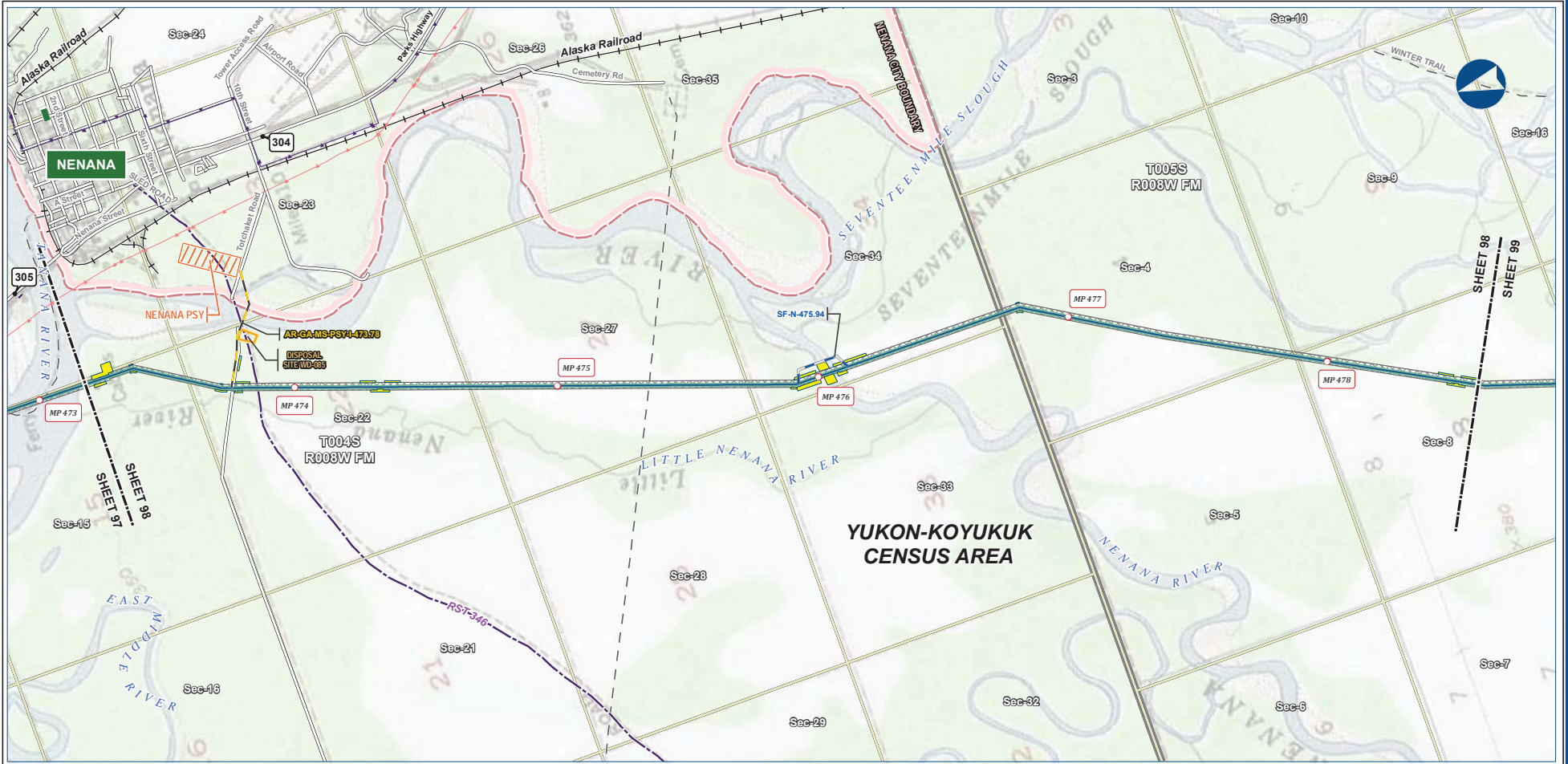
DISCLAIMER

The information contained herein is for informational or planning purposes only. It does not nor should it be deemed to be an offer, request or proposals for rights or occupation of any kind. The Alaska LNG Project Participants and their respective officers, employees and agents, make no warranty, implied or otherwise, nor accept any liability, as to the accuracy or completeness of the information contained in these documents, drawings or electronic files. Do not remove or delete this note from document, drawing or electronic file.

Alaska LNG Project

PRELIMINARY FACILITY LOCATIONS - MAINLINE REV C2 ROUTE

ALASKA LNG



B-105



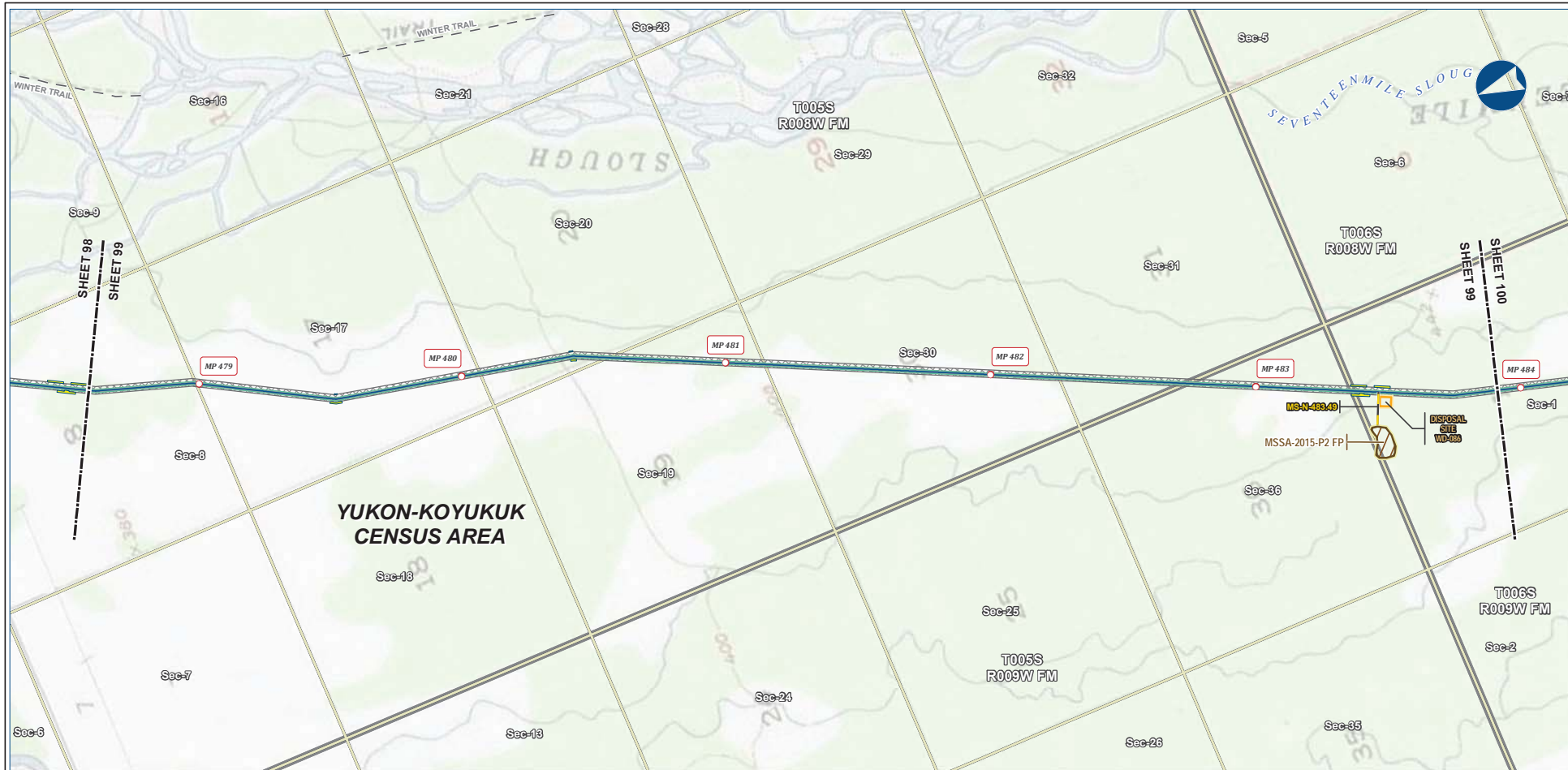
Legend		EXISTING FEATURES	
	Mainline Pipeline		Existing Roads
	Construction ROW		Railroad
	Access Road - Gravel		Revised Statute 2477 Trail
	Access Road - Ice		Off Road Trails
	Pipe Storage Yard (PSY)		Buried Cable
	Disposal Site		Overhead Powerline
			Incorporated City Boundary
			Alaska DOT Place Names
			Section
			Township

ALASKA LNG PROJECT Preliminary Facility Locations Mainline Rev C2 Route			
CENSUS AREA:	YUKON-KOYUKUK	DRAWN BY:	AGDC
STATE:	ALASKA	CHECKED BY:	
REV. NO.:	REVISION	DATE	
A	ISSUED FOR REVIEW	2017-03-10	
PRELIMINARY			
1:24,000			
DATE:	2017-03-10	PROJECTION:	NAD83 NSRS2007 ALASKAZONE4 FTUS 54392

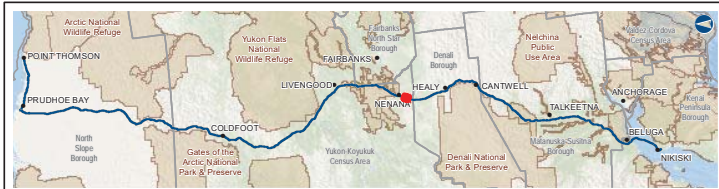
DISCLAIMER

The information contained herein is for informational or planning purposes only. It does not nor should it be deemed to be an offer, request or proposals for rights or occupation of any kind. The Alaska LNG Project Participants and their respective officers, employees and agents, make no warranty, implied or otherwise, nor accept any liability, as to the accuracy or completeness of the information contained in these documents, drawings or electronic files. Do not remove or delete this note from document, drawing or electronic file.

Alaska LNG Project



B-106



Legend

Mainline Pipeline	Permanent ROW	Existing Roads
Access Road - Gravel	Construction ROW	Off Road Trails
	ATWS	Section
	Disposal Site	Township
	Material Site Study Area (MSSA)	

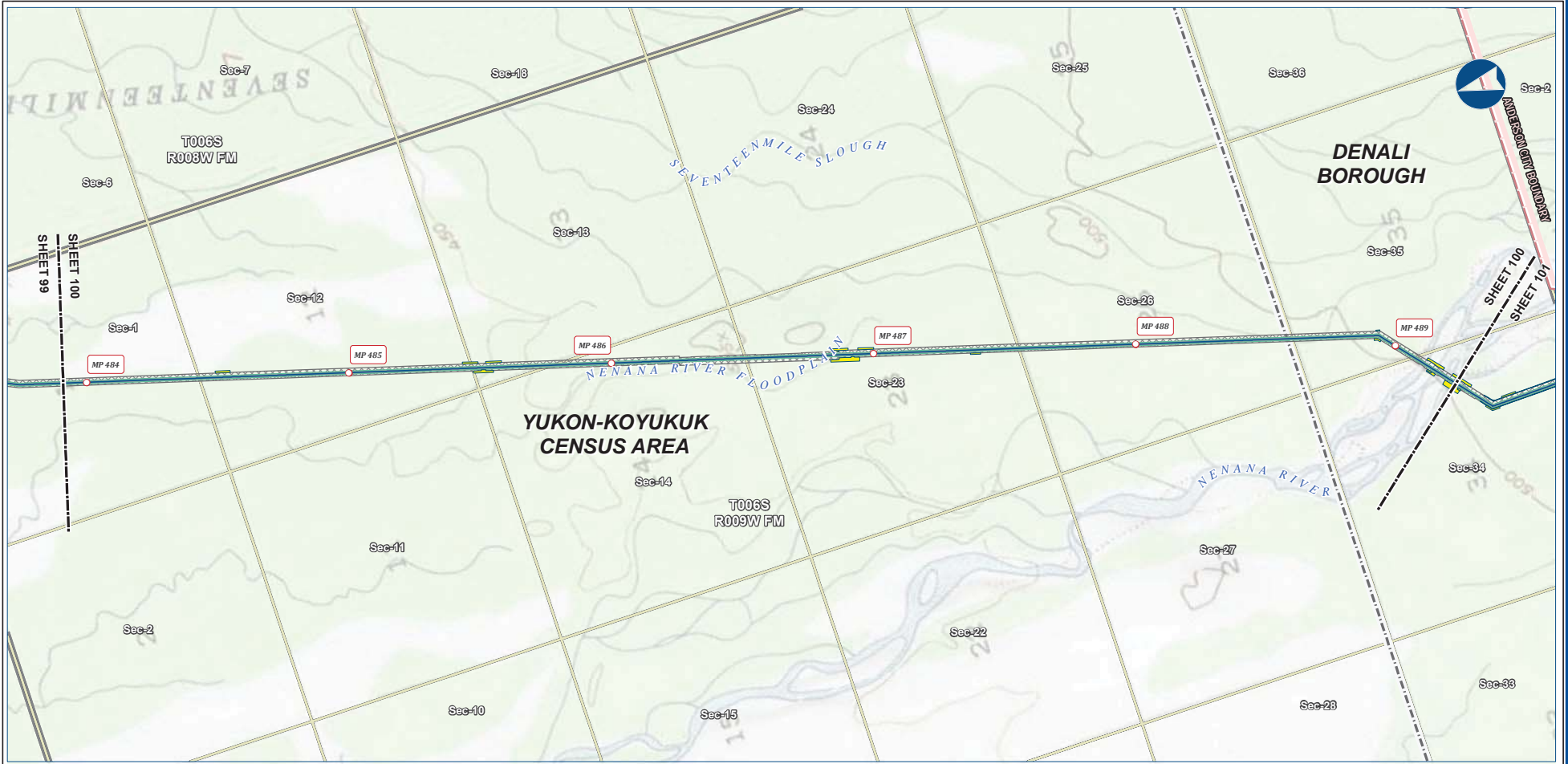
ALASKA LNG PROJECT
Preliminary Facility Locations
Mainline Rev C2 Route

CENSUS AREA: YUKON-KOYUKUK	DRAWN BY: AGDC
STATE: ALASKA	CHECKED BY:
REV. NO.: A	ISSUED FOR REVIEW
REVISION	DATE
	2017-03-10
PRELIMINARY	
1:24,000	
0 5 10 Miles	
DATE: 2017-03-10	PROJECTION: NAD83 NSRS2007 ALASKAZONE4 FTUS 54392

DISCLAIMER

The information contained herein is for informational or planning purposes only. It does not nor should it be deemed to be an offer, request or proposals for rights or occupation of any kind. The Alaska LNG Project Participants and their respective officers, employees and agents, make no warranty, implied or otherwise, nor accept any liability, as to the accuracy or completeness of the information contained in these documents, drawings or electronic files. Do not remove or delete this note from document, drawing or electronic file.

DWG: RR-1_APPENDIX_A1_MAINLINE_TOPO_REV_C2_CL SHEET: 99



B-107



Legend		EXISTING FEATURES	
Mainline Pipeline	Permanent ROW	Existing Roads	Borough / Census Area
Construction ROW	ATWS	Off Road Trails	Incorporated City Boundary
		Section	Township

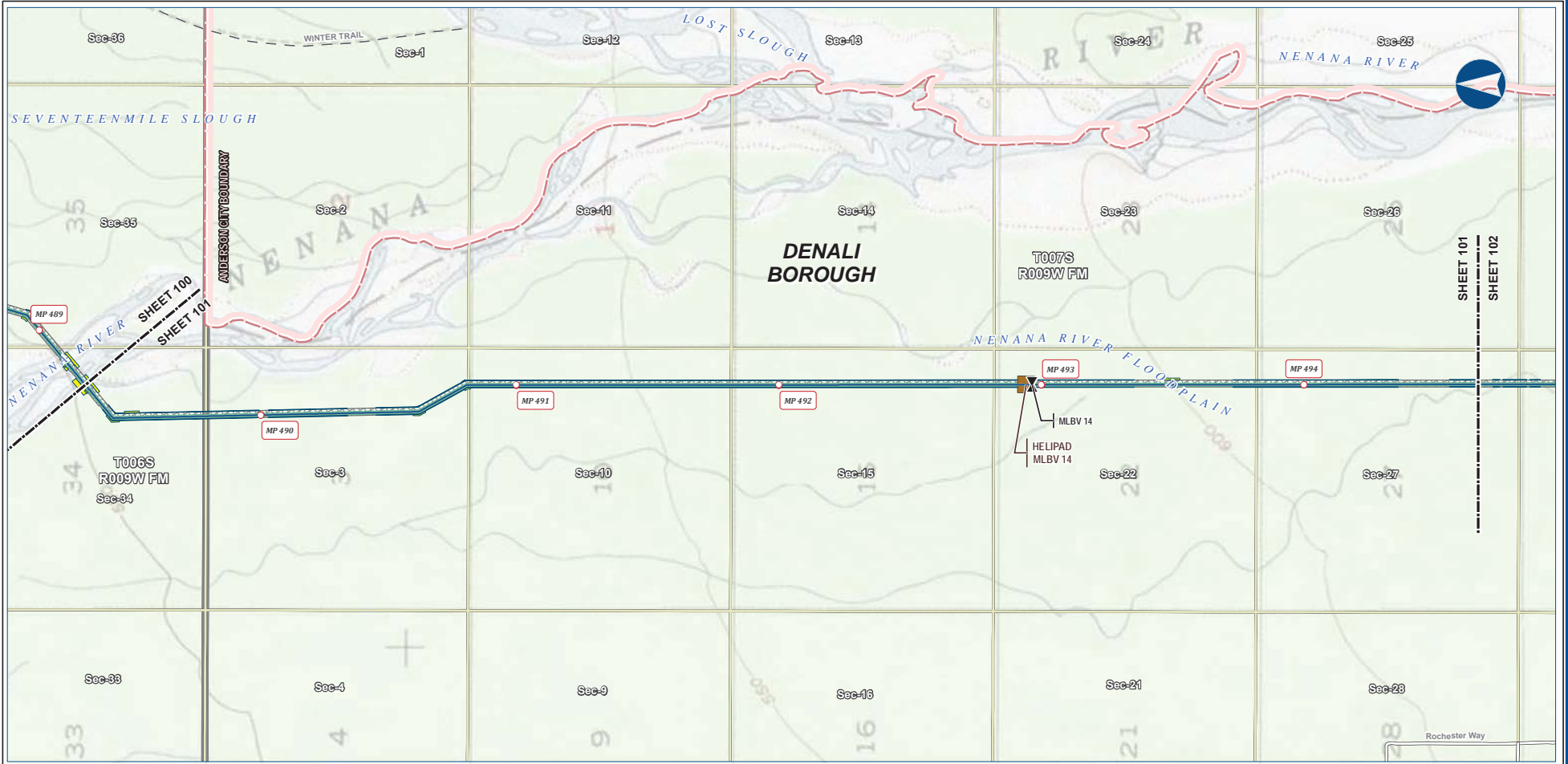
ALASKA LNG PROJECT Preliminary Facility Locations Mainline Rev C2 Route			
CENSUS AREA:	YUKON-KOYUKUK	DRAWN BY:	AGDC
STATE:	ALASKA	CHECKED BY:	
REV. NO.:	REVISION	DATE	
A	ISSUED FOR REVIEW	2017-03-10	
PRELIMINARY			
1:24,000			
DATE: 2017-03-10	PROJECTION: NAD83 NSRS2007 ALASKAZONE4 FTUS 54392	DWG: RR_1_APPENDIX_A1_MAINLINE_TOPO_REV_C2_CL	SHEET: 100

DISCLAIMER

The information contained herein is for informational or planning purposes only. It does not nor should it be deemed to be an offer, request or proposals for rights or occupation of any kind. The Alaska LNG Project Participants and their respective officers, employees and agents, make no warranty, implied or otherwise, nor accept any liability, as to the accuracy or completeness of the information contained in these documents, drawings or electronic files. Do not remove or delete this note from document, drawing or electronic file.

PRELIMINARY FACILITY LOCATIONS - MAINLINE REV C2 ROUTE

ALASKA LNG



B-108



Legend

Mainline Pipeline	Permanent ROW	Existing Roads
Mainline Blockvalve	Construction ROW	Off Road Trails
Helipad	ATWS	Incorporated City Boundary
		Section
		Township

ALASKA LNG PROJECT
Preliminary Facility Locations
Mainline Rev C2 Route

BOROUGH:	DENALI	DRAWN BY:	AGDC
STATE:	ALASKA	CHECKED BY:	
REV. NO.:	A	REVISION	ISSUED FOR REVIEW
		DATE	2017-03-10
PRELIMINARY			
1:24,000			
DATE:	2017-03-10	PROJECTION:	NAD83 NSRS2007 ALASKAZONE4 FTUS 54392

DISCLAIMER

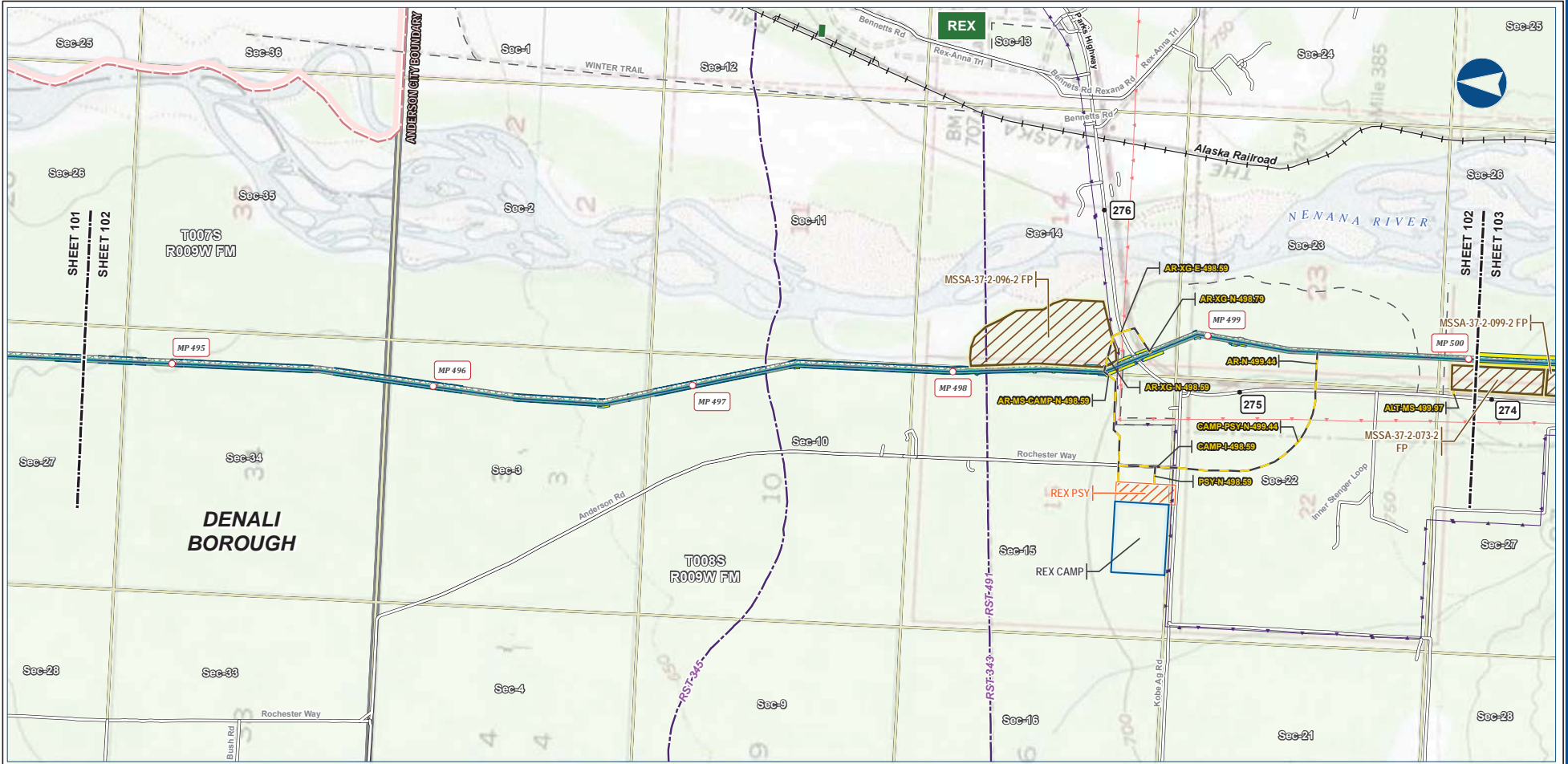
The information contained herein is for informational or planning purposes only. It does not nor should it be deemed to be an offer, request or proposals for rights or occupation of any kind. The Alaska LNG Project Participants and their respective officers, employees and agents, make no warranty, implied or otherwise, nor accept any liability, as to the accuracy or completeness of the information contained in these documents, drawings or electronic files. Do not remove or delete this note from document, drawing or electronic file.

DWG: RR1_APPENDIX_A1_MAINLINE_TOPO_REV_C2_CL SHEET: 101

Alaska LNG Project

PRELIMINARY FACILITY LOCATIONS - MAINLINE REV C2 ROUTE

ALASKA LNG



B-109



Legend		EXISTING FEATURES	
Permanent ROW	Mainline Pipeline	Existing Roads	Railroad
Construction ROW	ATWS	Revised Statute 2477 Trail	Off Road Trails
Off ROW Camp	Pipe Storage Yard (PSY)	Buried Cable	Overhead Powerline
Material Site Study Area (MSSA)		Incorporated City Boundary	Alaska DOT Place Names
		Section	Township

ALASKA LNG PROJECT			
Preliminary Facility Locations			
Mainline Rev C2 Route			
BOROUGH:	DENALI	DRAWN BY:	AGDC
STATE:	ALASKA	CHECKED BY:	
REV. NO.:	REVISION	DATE	
A	ISSUED FOR REVIEW	2017-03-10	
PRELIMINARY			
1:24,000			
DATE:	2017-03-10	PROJECTION:	NAD83 NSRS2007 ALASKAZONE4 FTUS 54392

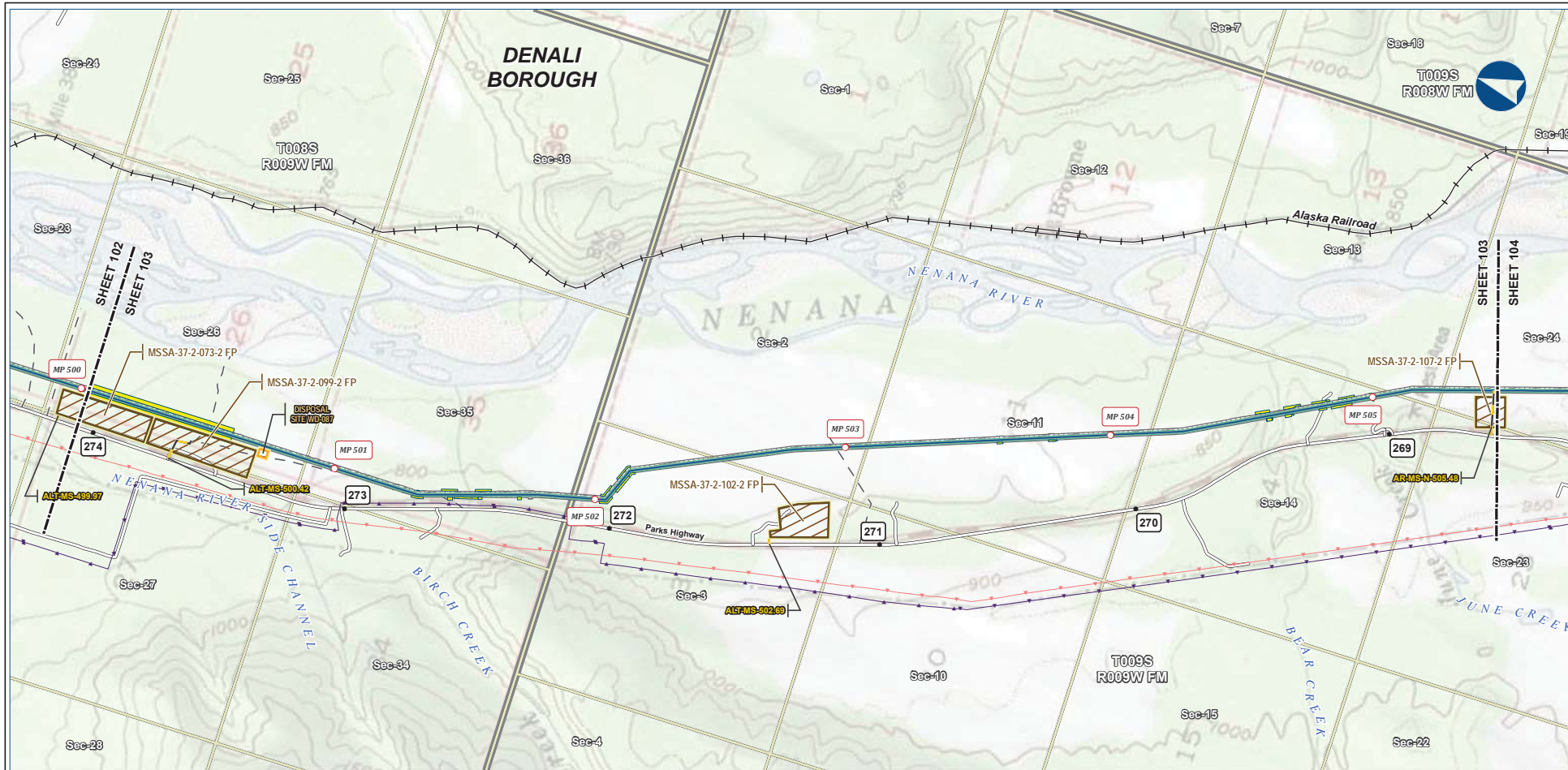
DISCLAIMER

The information contained herein is for informational or planning purposes only. It does not nor should it be deemed to be an offer, request or proposals for rights or occupation of any kind. The Alaska LNG Project Participants and their respective officers, employees and agents, make no warranty, implied or otherwise, nor accept any liability, as to the accuracy or completeness of the information contained in these documents, drawings or electronic files. Do not remove or delete this note from document, drawing or electronic file.

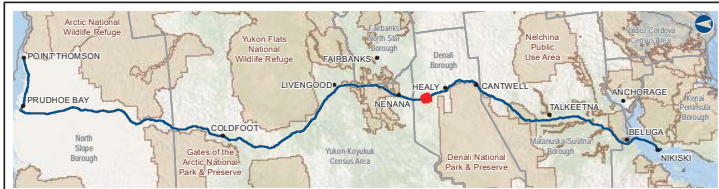
Alaska LNG Project

PRELIMINARY FACILITY LOCATIONS - MAINLINE REV C2 ROUTE

ALASKA LNG



B-110



Legend

Mainline Pipeline	Permanent ROW	Existing Roads
Access Road - Gravel	Construction ROW	Railroad
	ATWS	Off Road Trails
	Disposal Site	Buried Cable
	Material Site Study Area (MSSA)	Overhead Powerline
		Section
		Township

ALASKA LNG PROJECT
Preliminary Facility Locations
Mainline Rev C2 Route

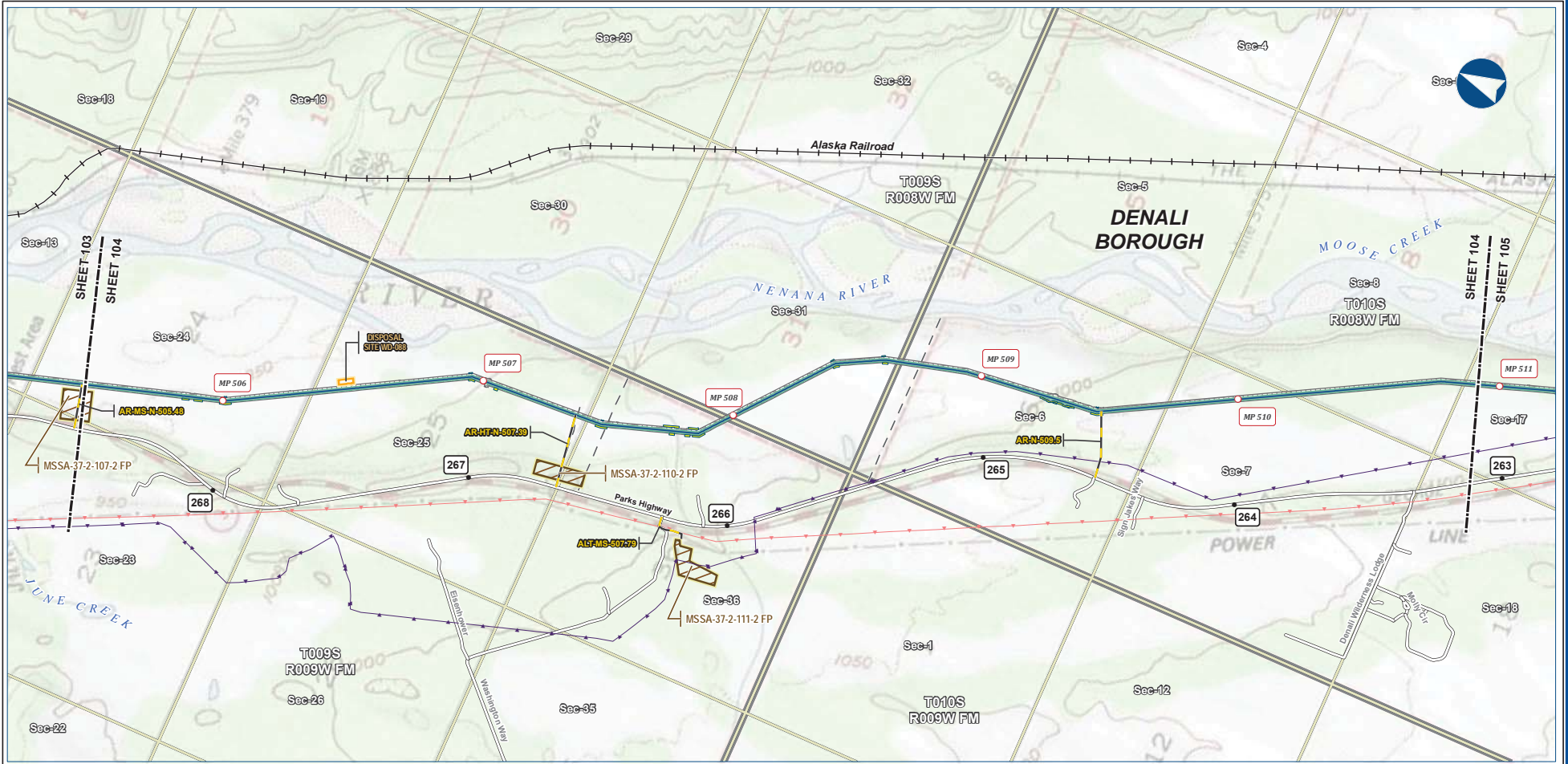
BOROUGH:	DENALI	DRAWN BY:	AGDC
STATE:	ALASKA	CHECKED BY:	
REV. NO.:	REVISION	DATE	
A	ISSUED FOR REVIEW	2017-03-10	
PRELIMINARY			
1:24,000			
DATE:	2017-03-10	PROJECTION:	NAD83 NRSR2007 ALASKAZONE4 FTUS S4392

DISCLAIMER

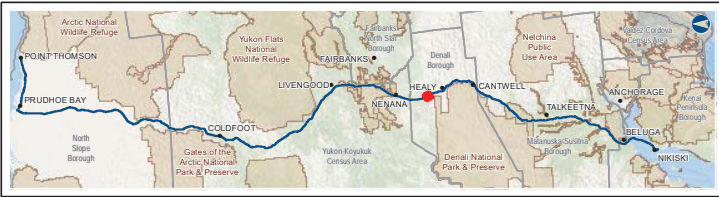
The information contained herein is for informational or planning purposes only. It does not nor should it be deemed to be an offer, request or proposals for rights or occupation of any kind. The Alaska LNG Project Participants and their respective officers, employees and agents, make no warranty, implied or otherwise, nor accept any liability, as to the accuracy or completeness of the information contained in these documents, drawings or electronic files. Do not remove or delete this note from document, drawing or electronic file.

Alaska LNG Project

PRELIMINARY FACILITY LOCATIONS - MAINLINE REV C2 ROUTE



B-111



Legend		EXISTING FEATURES	
	Mainline Pipeline		Existing Roads
	Construction ROW		Railroad
	Access Road - Gravel		Off Road Trails
	ATWS		Buried Cable
	Disposal Site		Overhead Powerline
	Material Site Study Area (MSSA)		Section
			Township

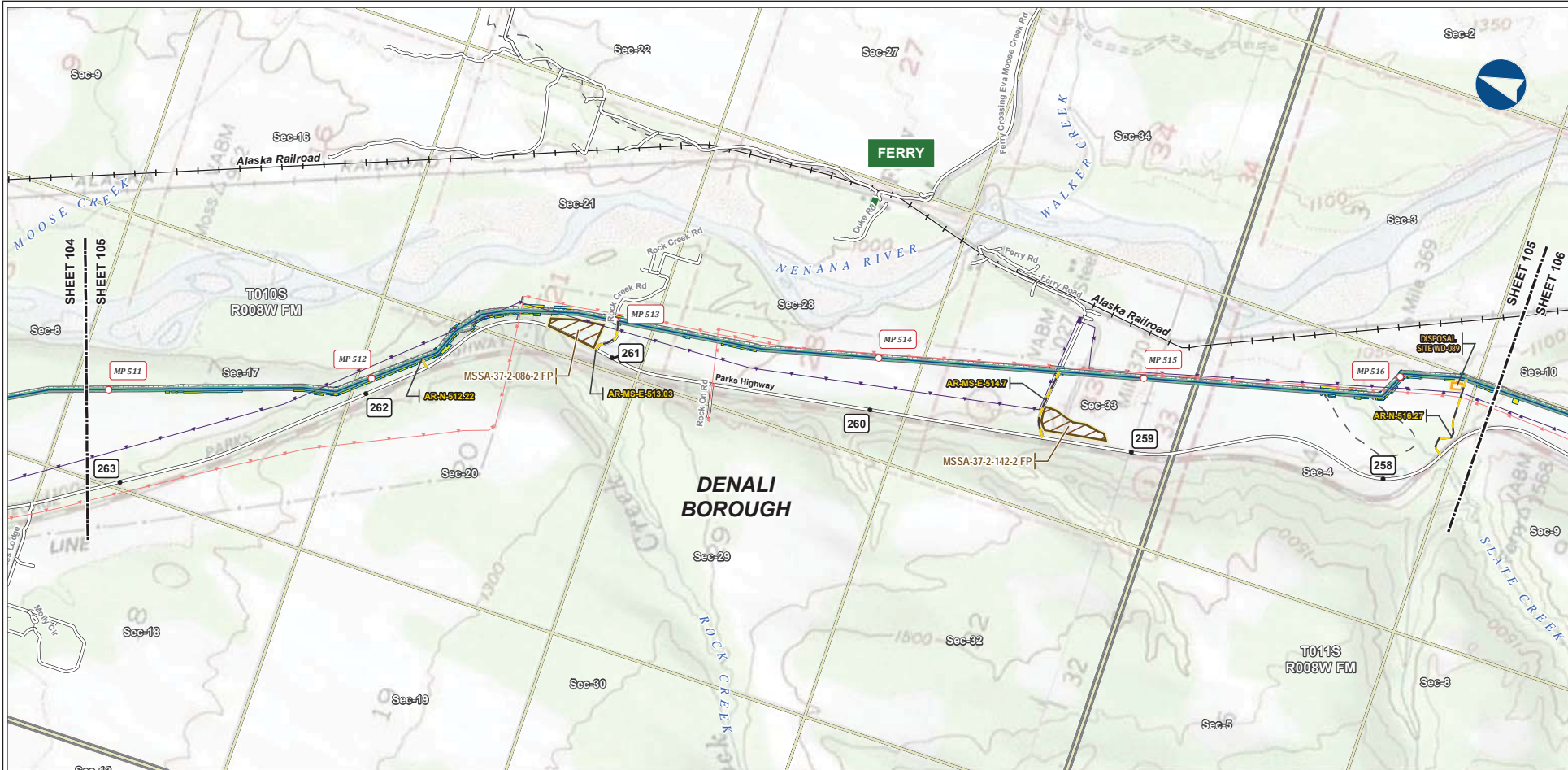
ALASKA LNG PROJECT Preliminary Facility Locations Mainline Rev C2 Route			
BOROUGH:	DENALI	DRAWN BY:	AGDC
STATE:	ALASKA	CHECKED BY:	
REV. NO.:	REVISION	DATE	
A	ISSUED FOR REVIEW	2017-03-10	
PRELIMINARY			
1:24,000			
DATE: 2017-03-10	PROJECTION: NAD83 NSRS2007 ALASKAZONE4 FTUS 54392	DWG: RR-1_APPENDIX_A1_MAINLINE_TOPO_REV_C2_CL	SHEET: 104

DISCLAIMER

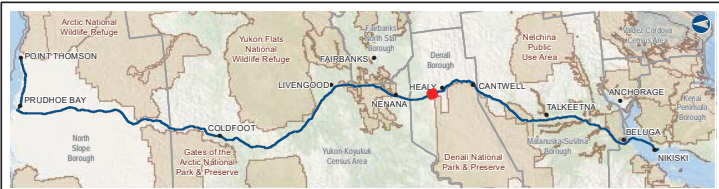
The information contained herein is for informational or planning purposes only. It does not nor should it be deemed to be an offer, request or proposals for rights or occupation of any kind. The Alaska LNG Project Participants and their respective officers, employees and agents, make no warranty, implied or otherwise, nor accept any liability, as to the accuracy or completeness of the information contained in these documents, drawings or electronic files. Do not remove or delete this note from document, drawing or electronic file.

PRELIMINARY FACILITY LOCATIONS - MAINLINE REV C2 ROUTE

ALASKA LNG



B-112



Legend		EXISTING FEATURES	
	Mainline Pipeline		Existing Roads
	Construction ROW		Railroad
	Access Road - Gravel		Off Road Trails
	Disposal Site		Buried Cable
	Material Site Study Area (MSSA)		Overhead Powerline
			Alaska DOT Place Names
			Section
			Township

ALASKA LNG PROJECT Preliminary Facility Locations Mainline Rev C2 Route			
BOROUGH:	DENALI	DRAWN BY:	AGDC
STATE:	ALASKA	CHECKED BY:	
REV. NO.:	REVISION	DATE	
A	ISSUED FOR REVIEW	2017-03-10	
PRELIMINARY			
1:24,000			
DATE: 2017-03-10	PROJECTION: NAD83 NSRS2007 ALASKAZONE4 FTUS 54392	DWG: RR_1_APPENDIX_A1_MAINLINE_TOPO_REV_C2_CL	SHEET: 105

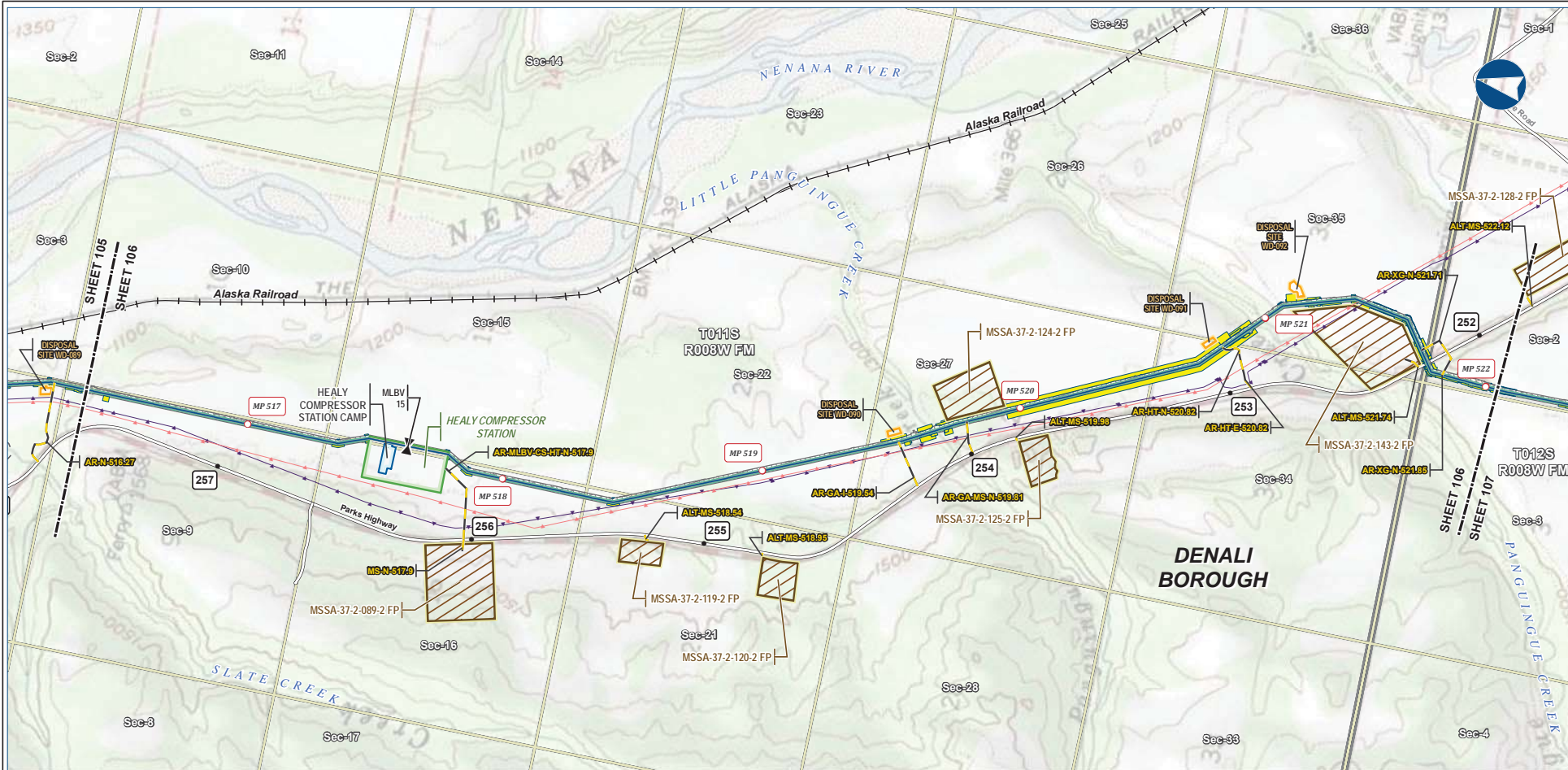
DISCLAIMER

The information contained herein is for informational or planning purposes only. It does not nor should it be deemed to be an offer, request or proposals for rights or occupation of any kind. The Alaska LNG Project Participants and their respective officers, employees and agents, make no warranty, implied or otherwise, nor accept any liability, as to the accuracy or completeness of the information contained in these documents, drawings or electronic files. Do not remove or delete this note from document, drawing or electronic file.

Alaska LNG Project

PRELIMINARY FACILITY LOCATIONS - MAINLINE REV C2 ROUTE

ALASKA LNG



B-113



Legend		EXISTING FEATURES	
Mainline Pipeline	Permanent ROW	Existing Roads	Railroad
Access Road - Gravel	Construction ROW	Off Road Trails	Buried Cable
Mainline Blockvale	ATWS	Overhead Powerline	Section
	Compressor Station	Township	
	Camp		
	Disposal Site		
	Material Site Study Area (MSSA)		

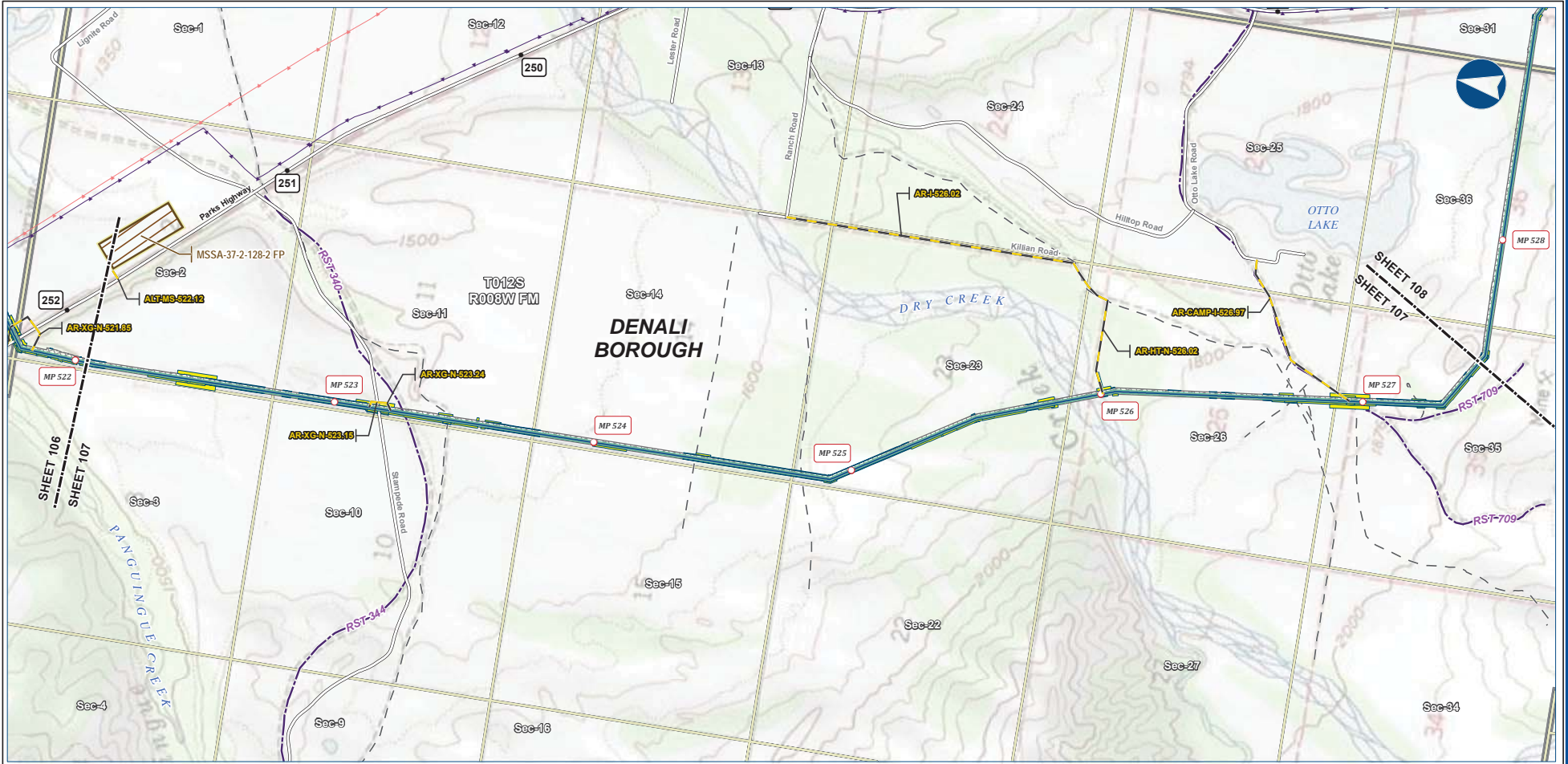
ALASKA LNG PROJECT			
Preliminary Facility Locations			
Mainline Rev C2 Route			
BOROUGH:	DENALI	DRAWN BY:	AGDC
STATE:	ALASKA	CHECKED BY:	
REV. NO.:	REVISION	DATE	
A	ISSUED FOR REVIEW	2017-03-10	
PRELIMINARY			
1:24,000			
DATE: 2017-03-10	PROJECTION: NAD83 NSRS2007 ALASKAZONE4 FTUS 54392	DWG: RR-1_APPENDIX_A1_MAINLINE_TOPO_REV_C2_CL	SHEET: 106

DISCLAIMER

The information contained herein is for informational or planning purposes only. It does not nor should it be deemed to be an offer, request or proposals for rights or occupation of any kind. The Alaska LNG Project Participants and their respective officers, employees and agents, make no warranty, implied or otherwise, nor accept any liability, as to the accuracy or completeness of the information contained in these documents, drawings or electronic files. Do not remove or delete this note from document, drawing or electronic file.

Alaska LNG Project

PRELIMINARY FACILITY LOCATIONS - MAINLINE REV C2 ROUTE



B-114



Legend		EXISTING FEATURES	
Mainline Pipeline	Permanent ROW	Existing Roads	Revised Statute 2477 Trail
Access Road - Gravel	Construction ROW	Off Road Trails	Buried Cable
ATWS	Material Site Study Area (MSSA)	Overhead Powerline	Section
		Township	

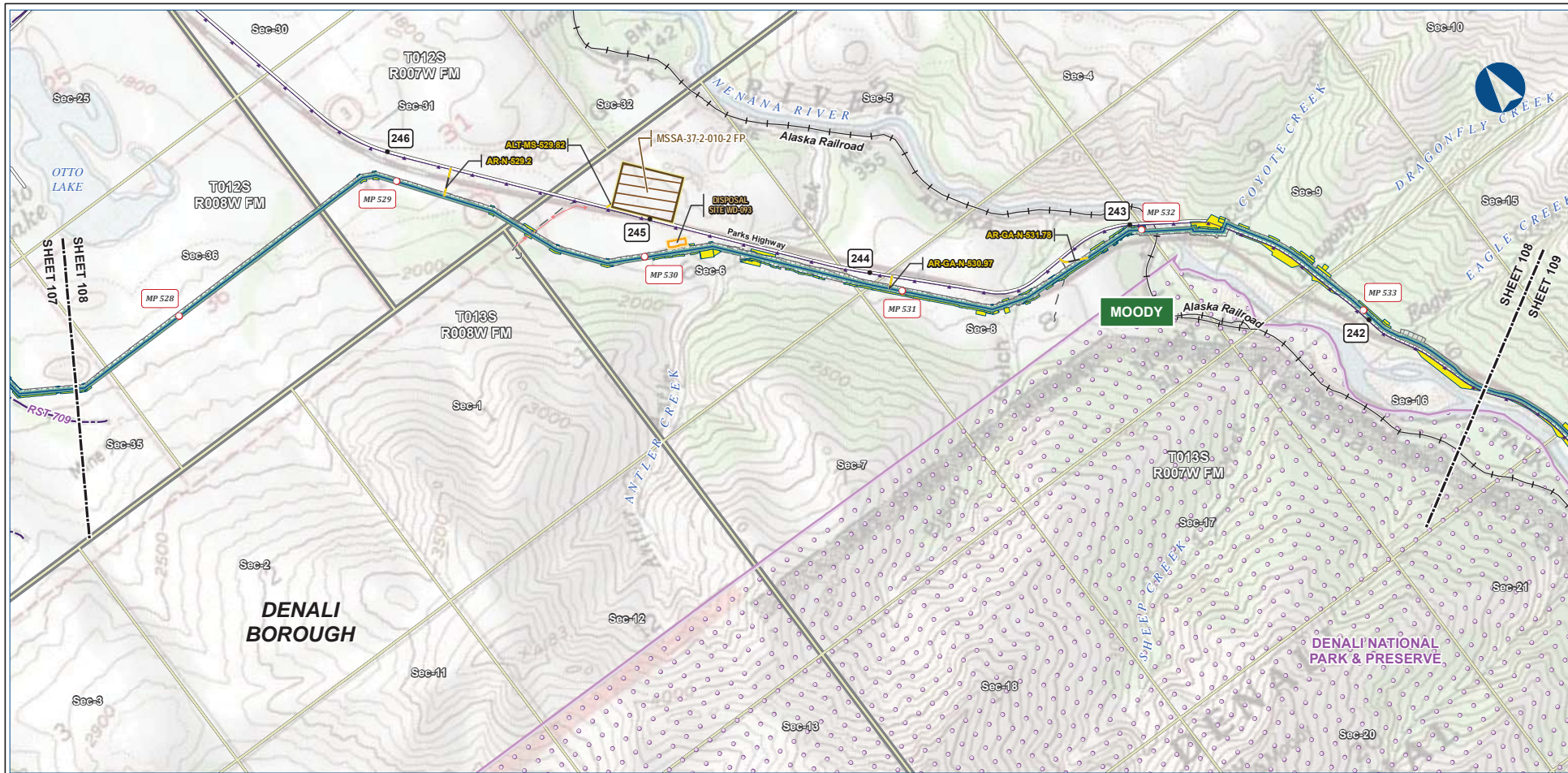
ALASKA LNG PROJECT Preliminary Facility Locations Mainline Rev C2 Route			
BOROUGH:	DENALI	DRAWN BY:	AGDC
STATE:	ALASKA	CHECKED BY:	
REV. NO.:	REVISION	DATE	
A	ISSUED FOR REVIEW	2017-03-10	
PRELIMINARY			
1:24,000			
DATE:	2017-03-10	PROJECTION:	NAD83 NRSR2007 ALASKAZONE4 FTUS 54392

DISCLAIMER

The information contained herein is for informational or planning purposes only. It does not nor should it be deemed to be an offer, request or proposals for rights or occupation of any kind. The Alaska LNG Project Participants and their respective officers, employees and agents, make no warranty, implied or otherwise, nor accept any liability, as to the accuracy or completeness of the information contained in these documents, drawings or electronic files. Do not remove or delete this note from document, drawing or electronic file.

PRELIMINARY FACILITY LOCATIONS - MAINLINE REV C2 ROUTE

ALASKA LNG



B-115



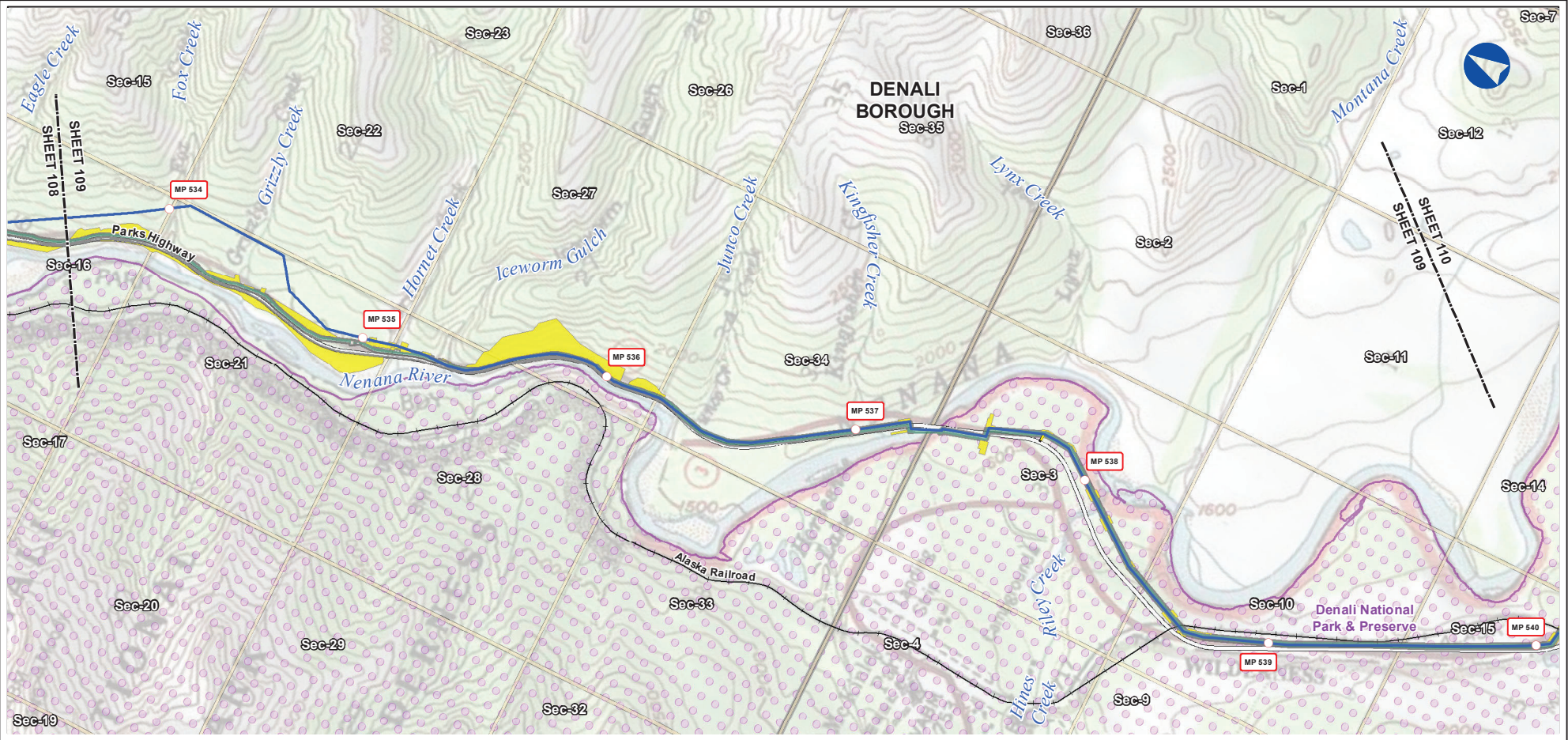
PIPELINE		EXISTING FEATURES	
	Mainline Pipeline		Existing Road
	Construction ROW		Railroad
	Access Road - Gravel		Revised Statute 2477 Trail
	Permanent ROW		Off Road Trails
	ATWS		Buried Cable
	Disposal Site		Overhead Powerline
	Material Site Study Area (MSSA)		Conservation Lands
			Alaska DOT Place Names
			Section
			Township

ALASKA LNG PROJECT			
Preliminary Facility Locations			
Mainline Rev C2 Route			
BOROUGH:	DENALI	DRAWN BY:	AGDC
STATE:	ALASKA	CHECKED BY:	
REV. NO.:	REVISION	DATE	
A	ISSUED FOR REVIEW	2017-03-10	
PRELIMINARY			
1:24,000			
DATE:	2017-03-10	PRODUCTION:	MAD83 NSRS2007 ALASKAZONE4 FTUS 54392

DISCLAIMER

The information contained herein is for informational or planning purposes only. It does not nor should it be deemed to be an offer, request or proposals for rights or occupation of any kind. The Alaska LNG Project Participants and their respective officers, employees and agents, make no warranty, implied or otherwise, nor accept any liability, as to the accuracy or completeness of the information contained in these documents, drawings or electronic files. Do not remove or delete this note from document, drawing or electronic file.

Alaska LNG Project



B-116



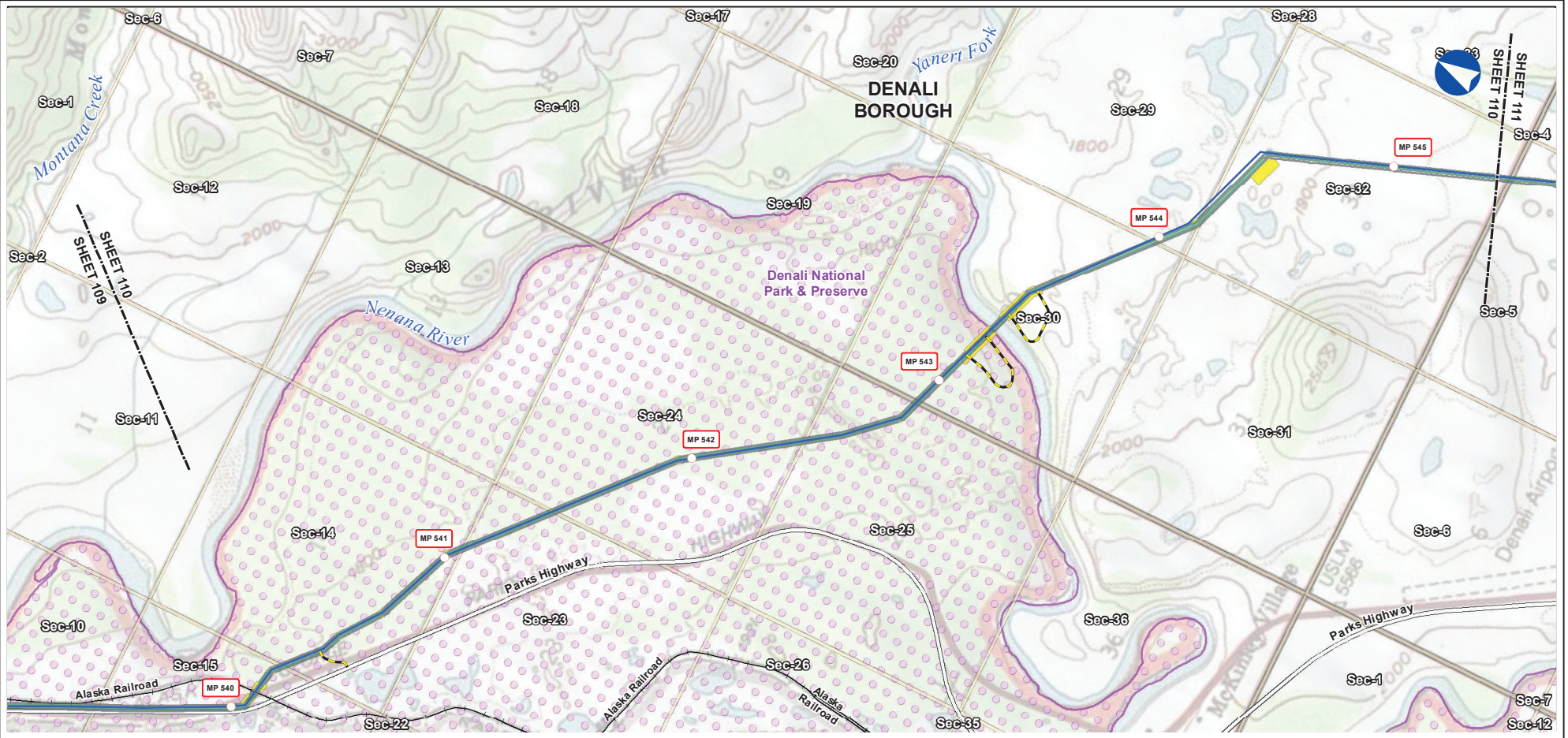
Legend	
PIPELINE	EXISTING FEATURES
Mainline Pipeline	Railroad
Access Road - Gravel	Existing Roads
ATWS	Conservation Lands
Permanent ROW	Section
Construction ROW	Township

ALASKA LNG PROJECT		
Preliminary Facility Locations		
Mainline Rev C2 Route		
BOROUGH:	DENALI	DRAWN BY: ERM
STATE:	ALASKA	CHECKED BY:
REV. NO.:	REVISION	DATE
A	ISSUED FOR REVIEW	2019-25-11
PRELIMINARY		
1:24,000		
DATE: 2019-25-11	PROJECTION: NAD83 NSRS2007 ALASKAZONE4 FTUS 54392	

DISCLAIMER

The information contained herein is for informational or planning purposes only. It does not nor should it be deemed to be an offer, request or proposals for rights or occupation of any kind. The Alaska LNG Project Participants and their respective officers, employees and agents, make no warranty, implied or otherwise, nor accept any liability, as to the accuracy or completeness of the information contained in these documents, drawings or electronic files. Do not remove or delete this note from document, drawing or electronic file.

PRELIMINARY FACILITY LOCATIONS - MAINLINE REV C2 ROUTE



B-117



Alaska LNG Project

Legend	
PIPELINE	EXISTING FEATURES
Mainline Pipeline	Railroad
Access Road - Gravel	Existing Roads
ATWS	Section
Permanent ROW	Township
Construction ROW	Conservation Lands

ALASKA LNG PROJECT		
Preliminary Facility Locations		
Mainline Rev C2 Route		
BOROUGH:	DENALI	DRAWN BY: ERM
STATE:	ALASKA	CHECKED BY:
REV. NO.:	REVISION	DATE
A	ISSUED FOR REVIEW	2019-25-11
PRELIMINARY		
1:24,000		
DATE: 2019-25-11	PROJECTION: NAD83 NSRS2007 ALASKAZONE4 FTUS 54392	

DISCLAIMER

The information contained herein is for informational or planning purposes only. It does not nor should it be deemed to be an offer, request or proposals for rights or occupation of any kind. The Alaska LNG Project Participants and their respective officers, employees and agents, make no warranty, implied or otherwise, nor accept any liability, as to the accuracy or completeness of the information contained in these documents, drawings or electronic files. Do not remove or delete this note from document, drawing or electronic file.

Mainline Facilities
(cont'd in appendix B volumes 3 and 4)