

OE ENERGY MARKET SNAPSHOT

West Version – May 2014 Data

Office of Enforcement
Federal Energy Regulatory Commission
June 2014

2014 Summer Assessment

[2014 Summer Assessment](http://www.ferc.gov/market-oversight/reports-analyses/mkt-views/2014/05-15-14.pdf)

<http://www.ferc.gov/market-oversight/reports-analyses/mkt-views/2014/05-15-14.pdf>

Infrastructure Report

[Office of Energy Projects Energy Infrastructure Update](http://www.ferc.gov/legal/staff-reports.asp)

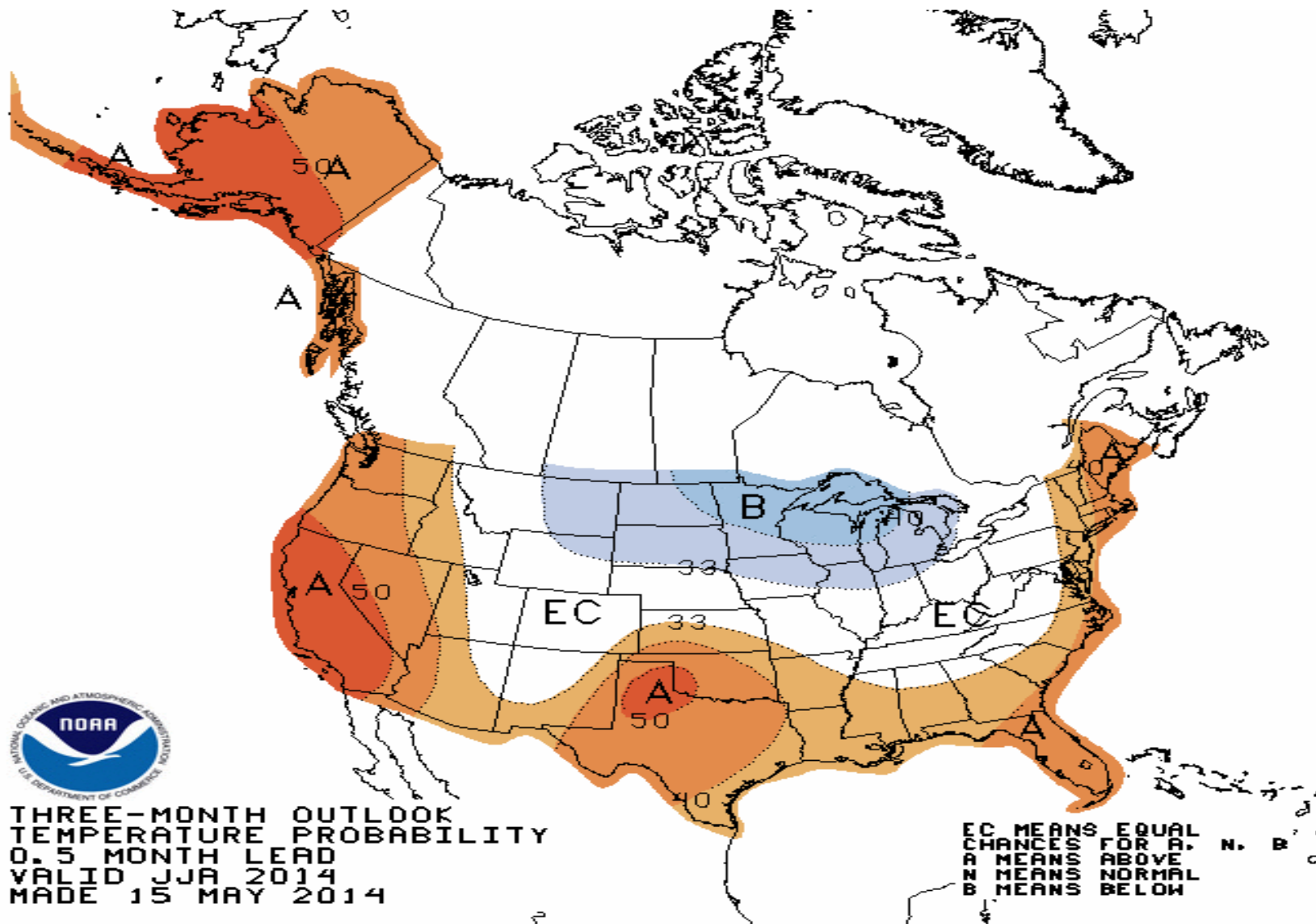
<http://www.ferc.gov/legal/staff-reports.asp>

(see “Energy Infrastructure” tab)



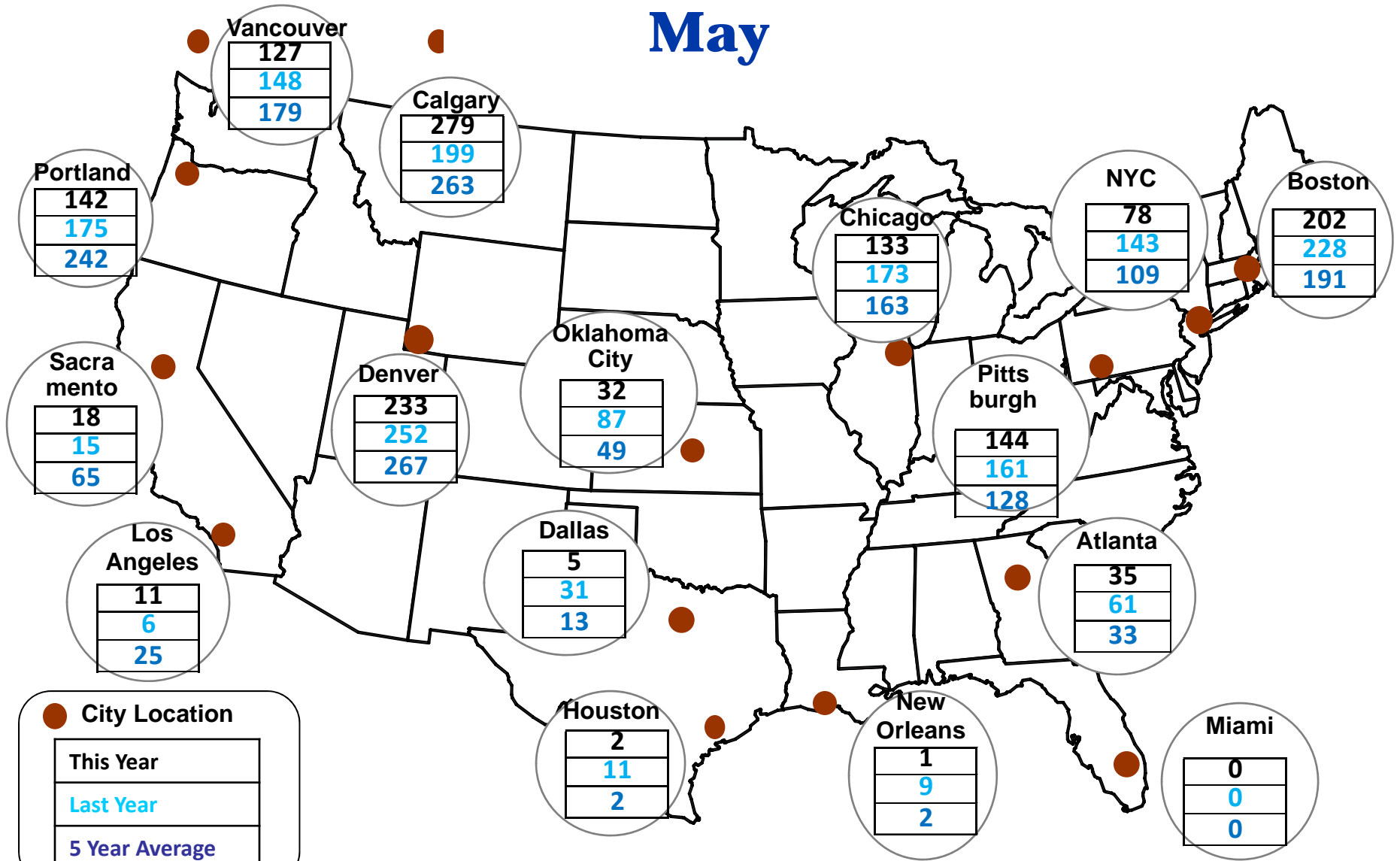
National Slides

NOAA 3 Month Outlook



Cumulative HDDs by City

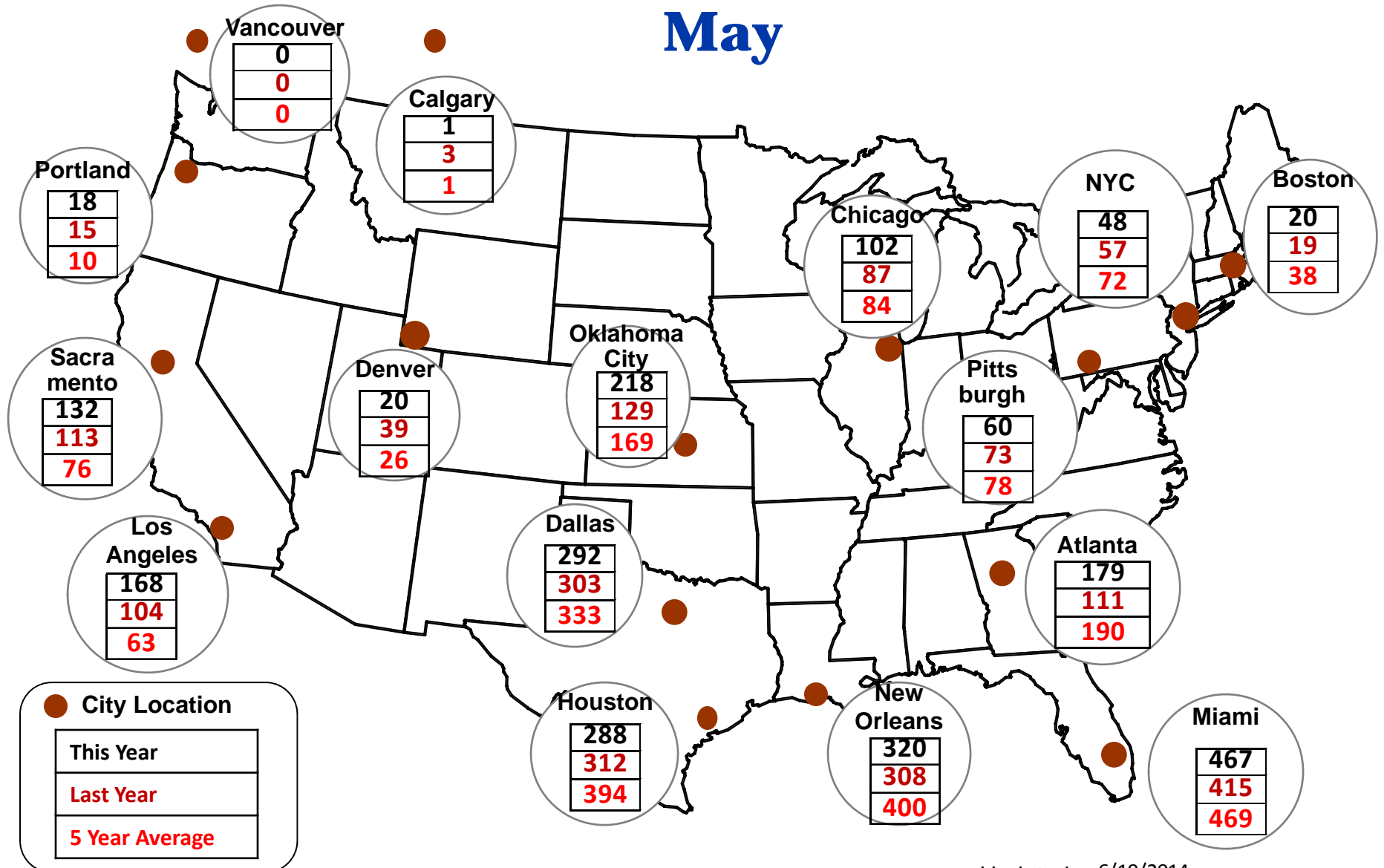
May



Source: Bloomberg Weather

Updated 6/19/2014

Cumulative CDDs by City May



Source: Bloomberg Weather

Updated 6/19/2014

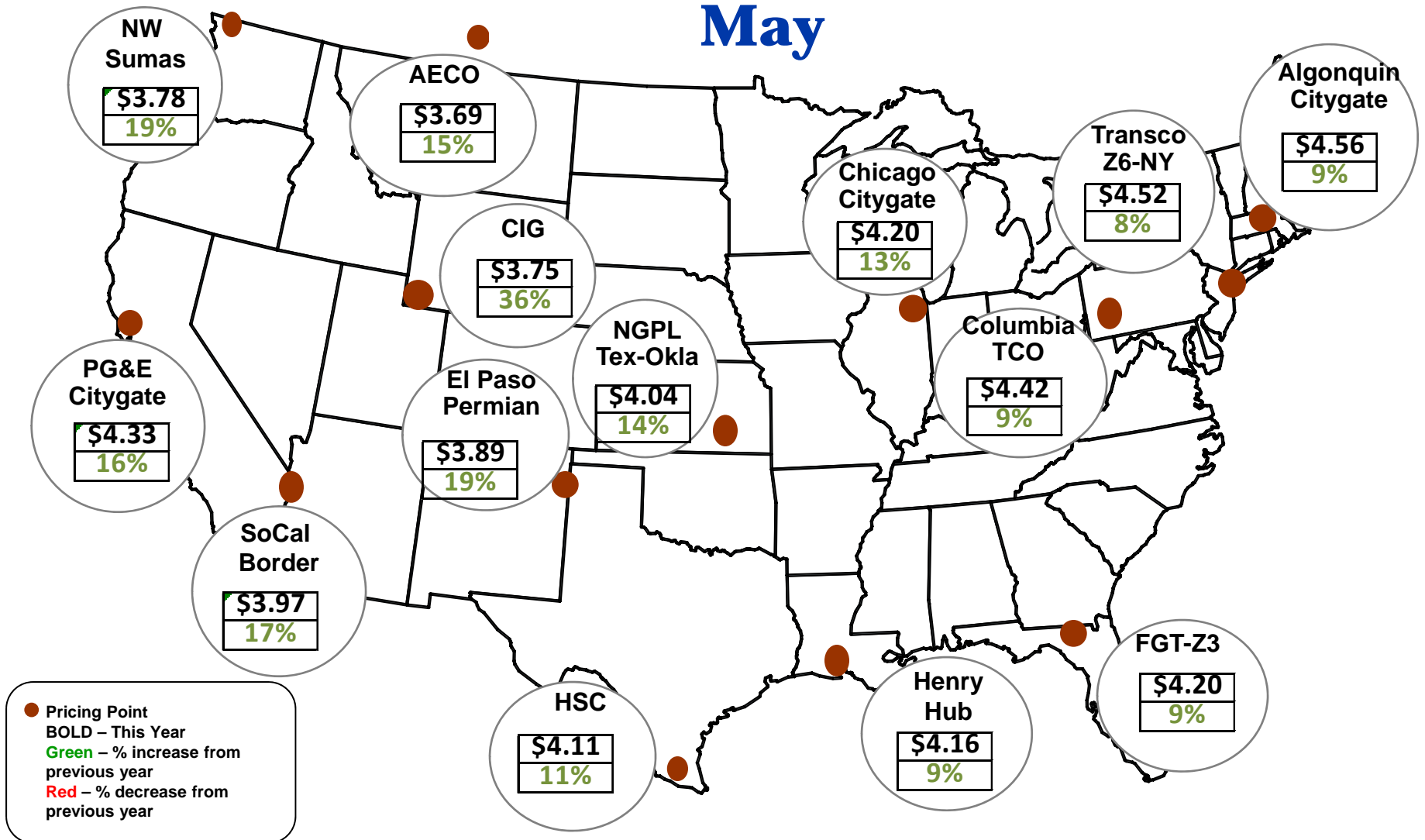
8

Federal Energy Regulatory Commission • Market Oversight • www.ferc.gov/oversight

Spot Natural Gas Prices

Average (\$/MMBtu)

May

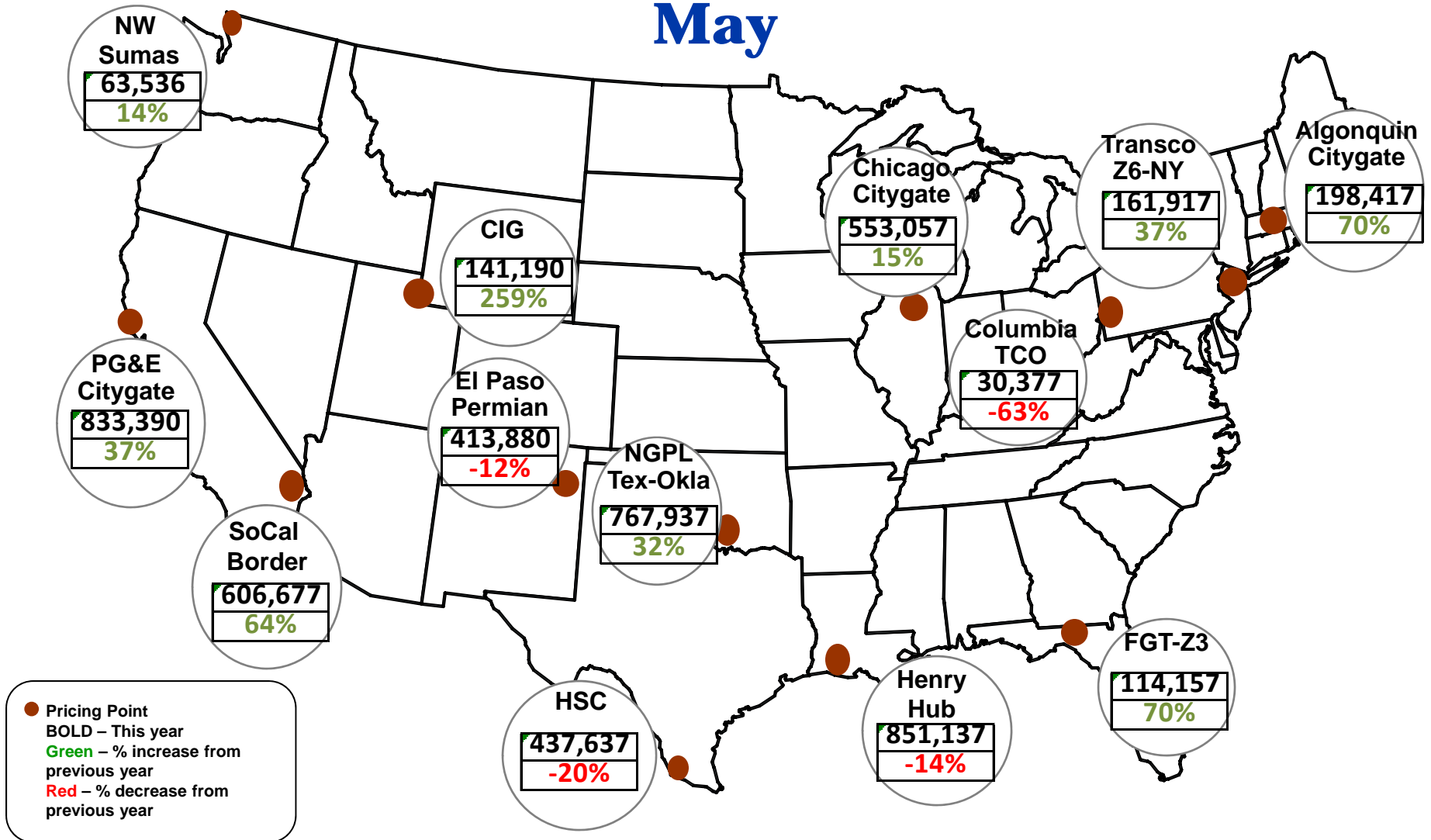


Source: ICE

Updated 6/19/2014

2181

Spot Natural Gas Trading Volumes Average (MMBtus) May



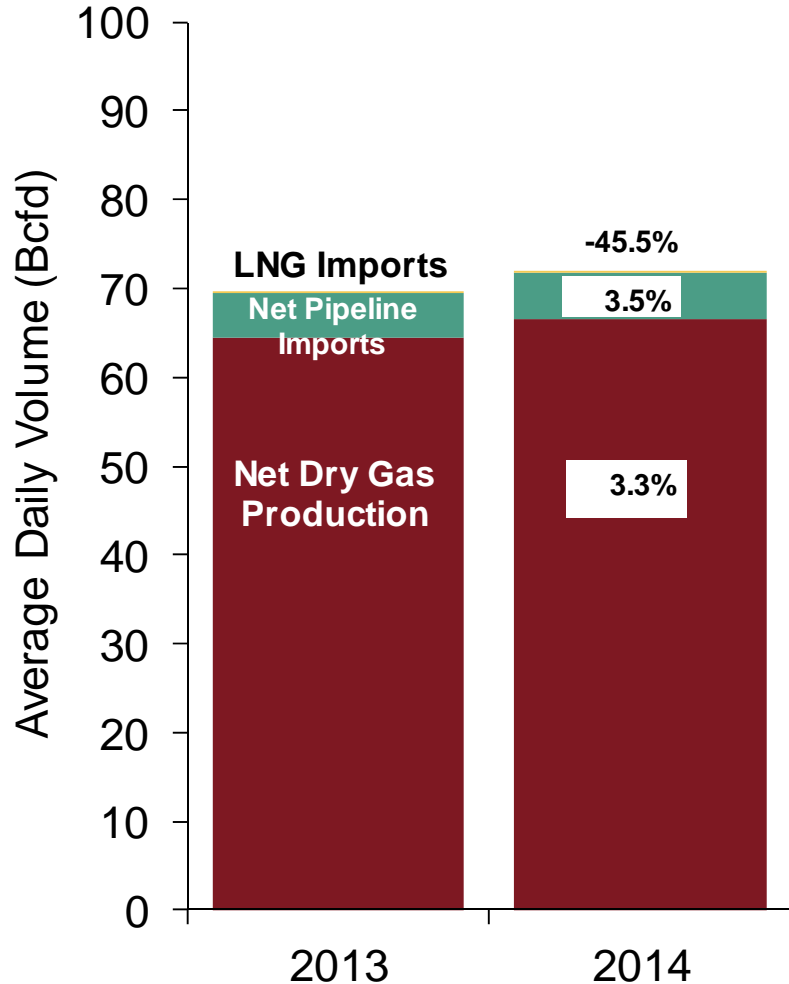
Source: ICE

Updated 6/19/2014

U.S. NG Supply and Demand May 2013 vs. May 2014

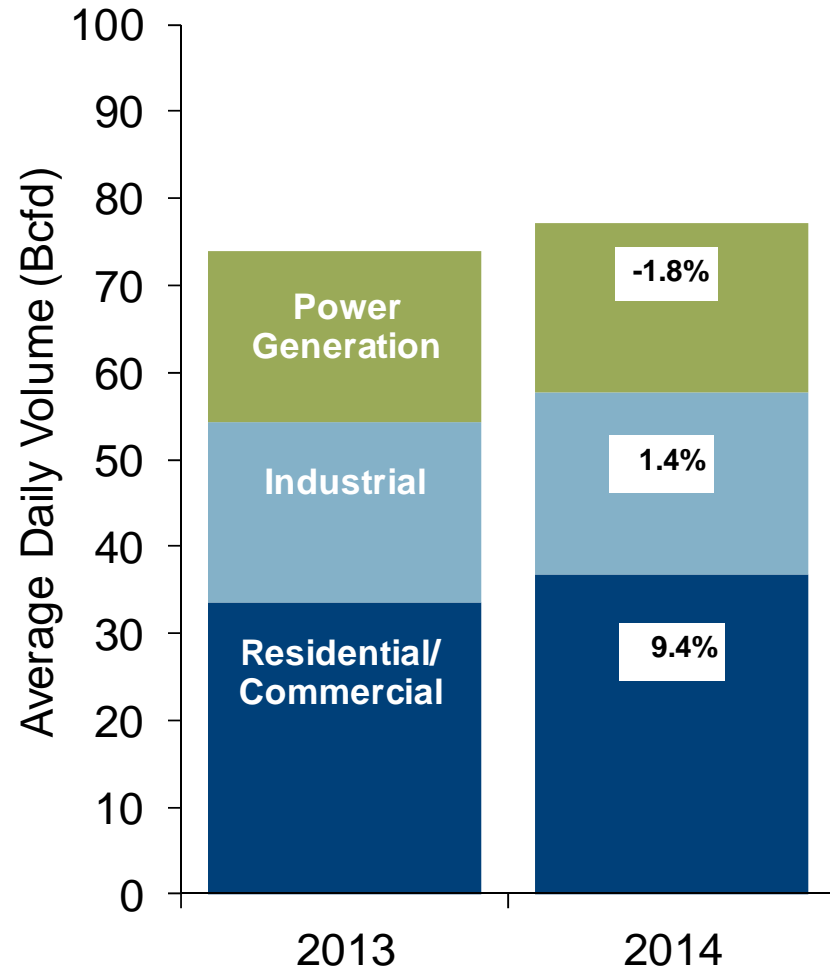
US Natural Gas Supply

Total Change in Supply 3.1%



US Natural Gas Demand

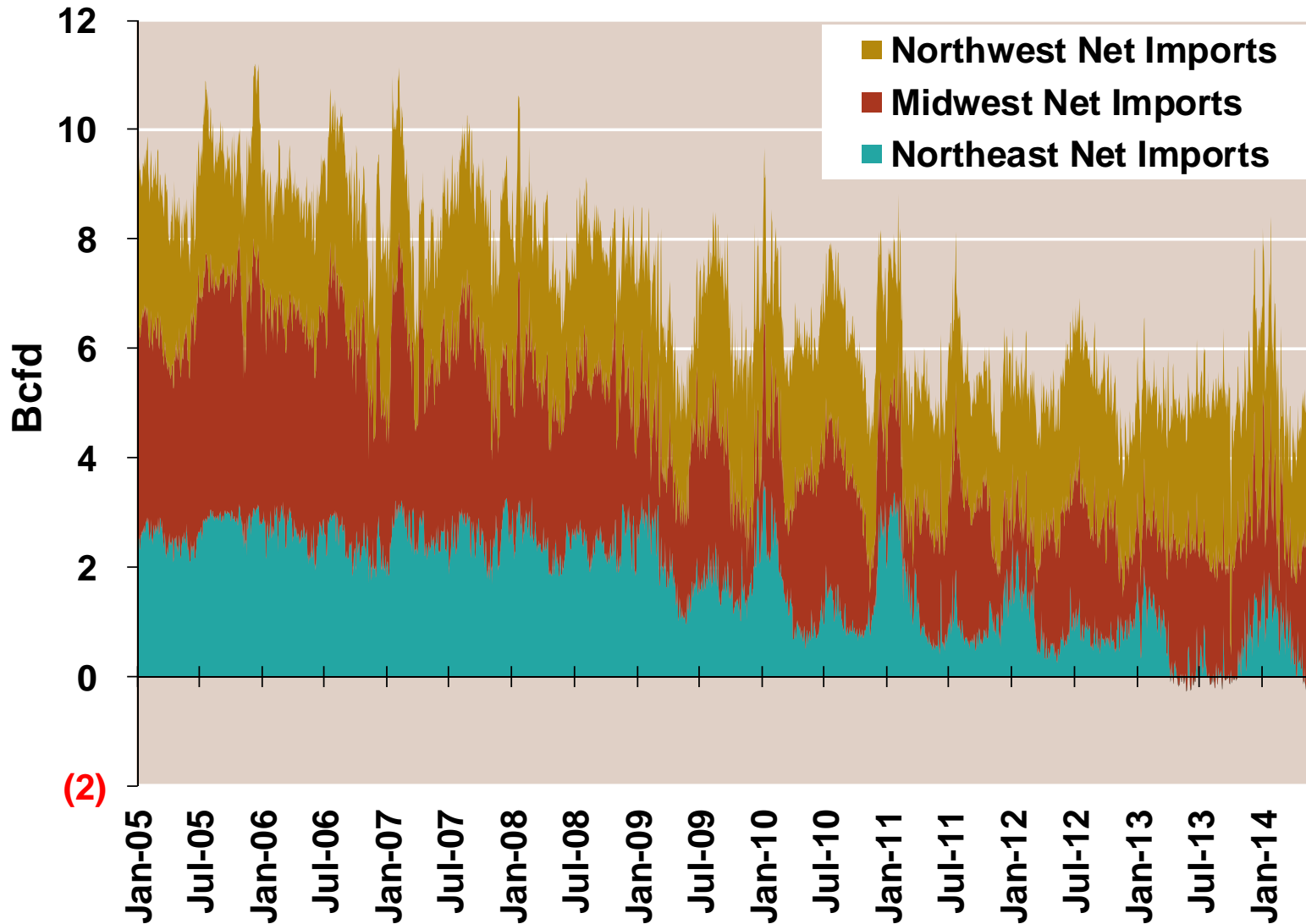
Total Change in Demand 4.1%



Note: Balance includes all amounts not attributable to other categories.

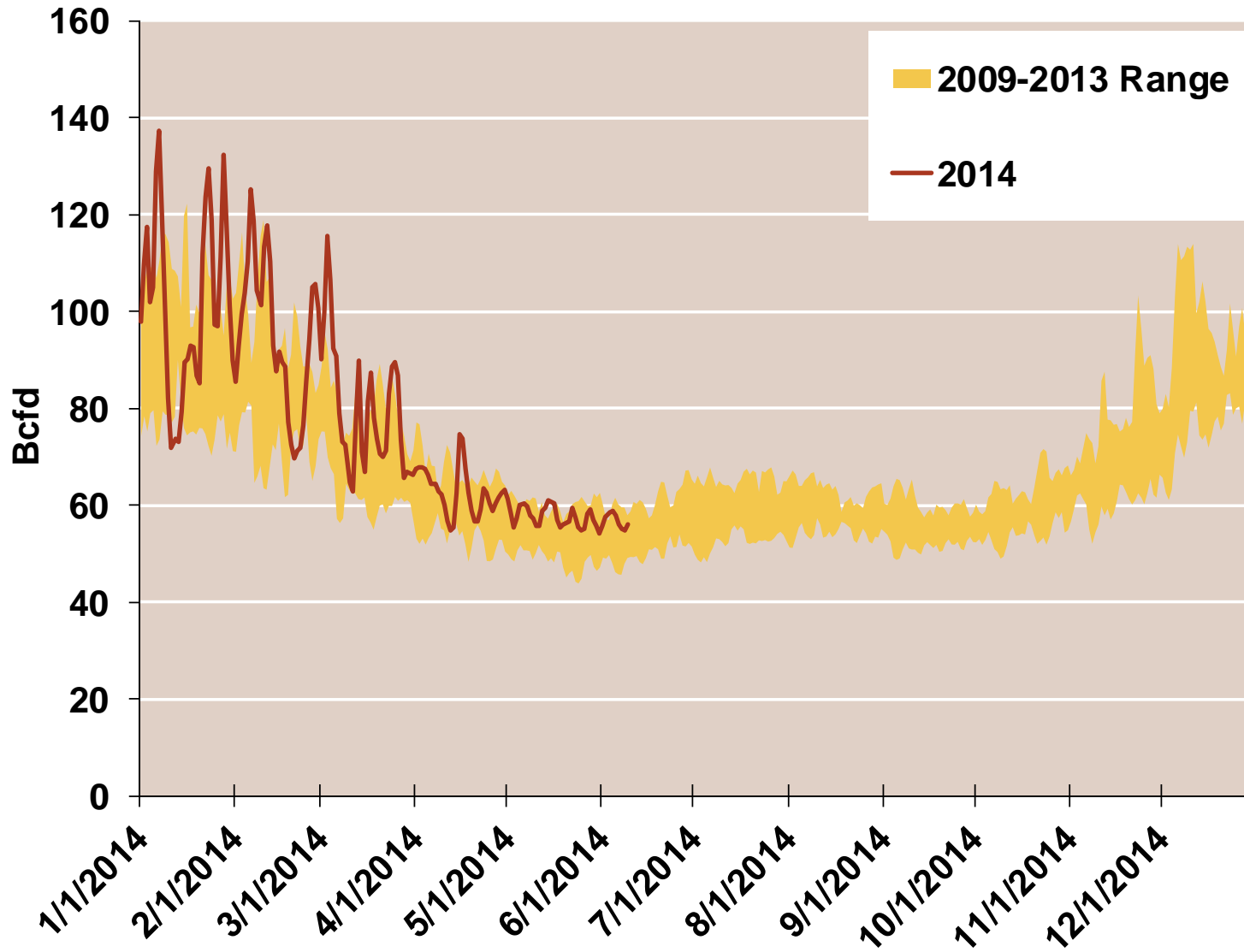
Source: Derived from *Bentek Energy* data

Regional Imports from Canada



(2)

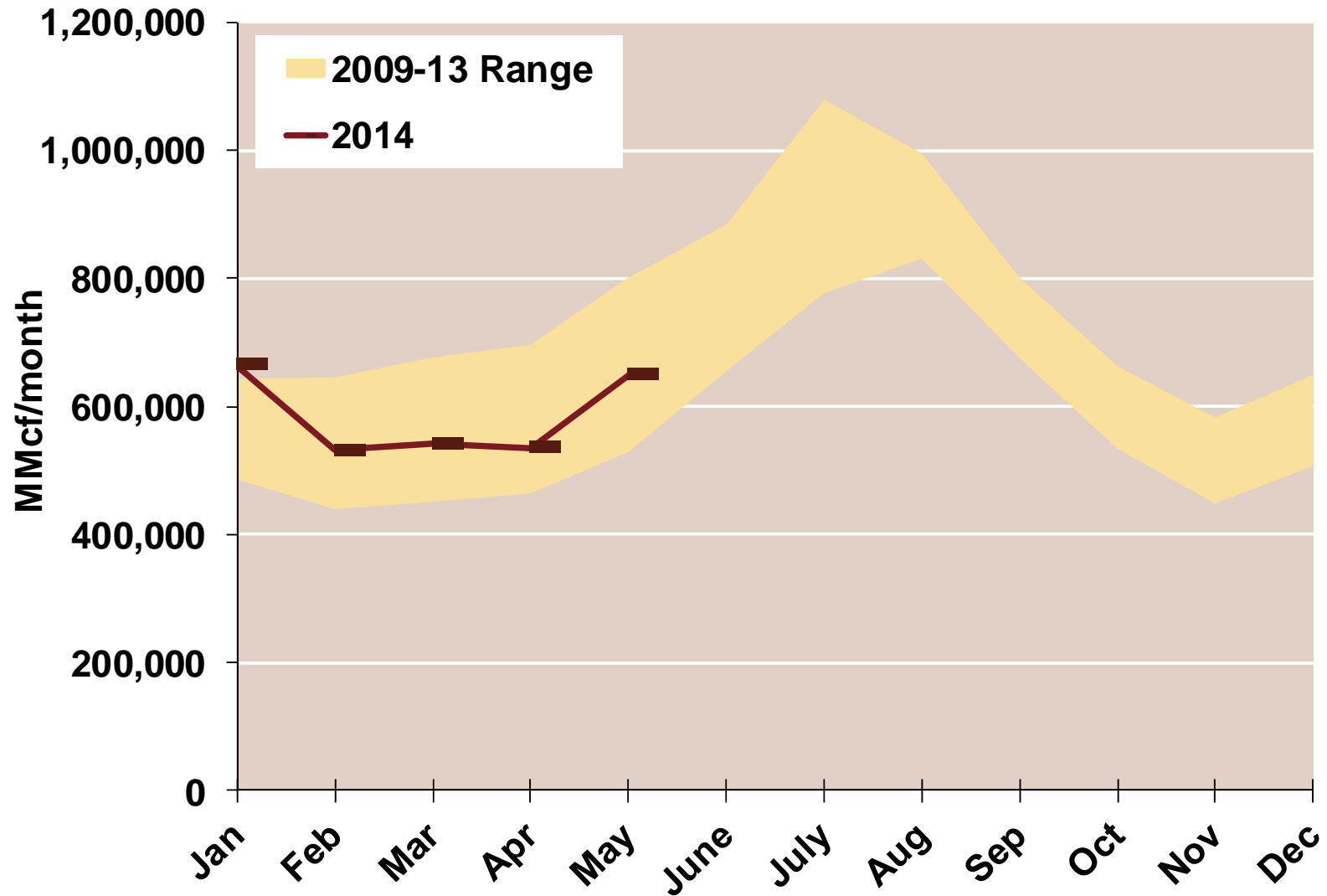
Total U.S. Natural Gas Demand All Sectors



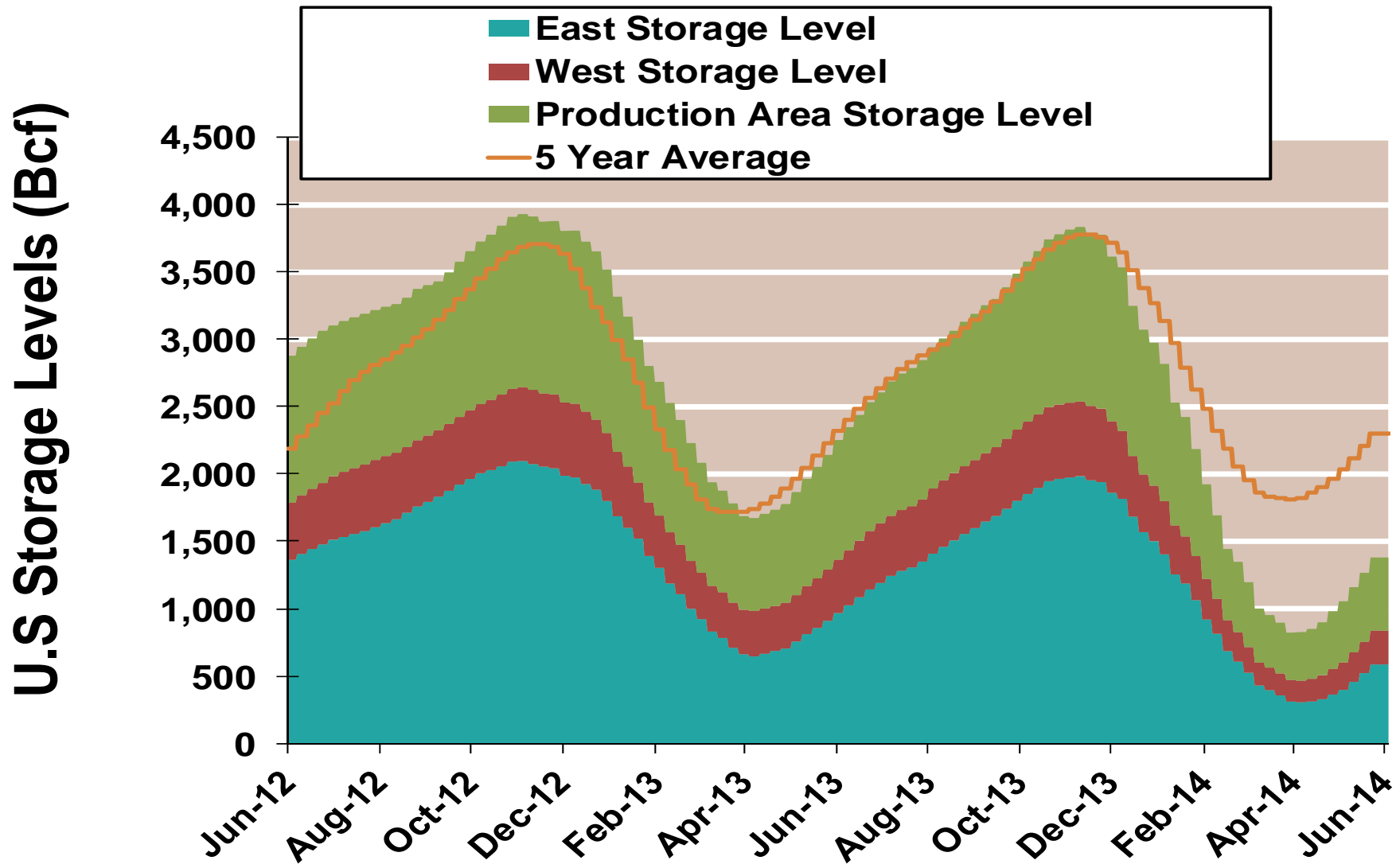
Source: Derived from *Bentek Energy* data, derived from interstate pipeline flow and modeled data.

Updated: June 2014

U.S. Natural Gas Consumption for Power Generation



EIA National Storage Inventories by Region

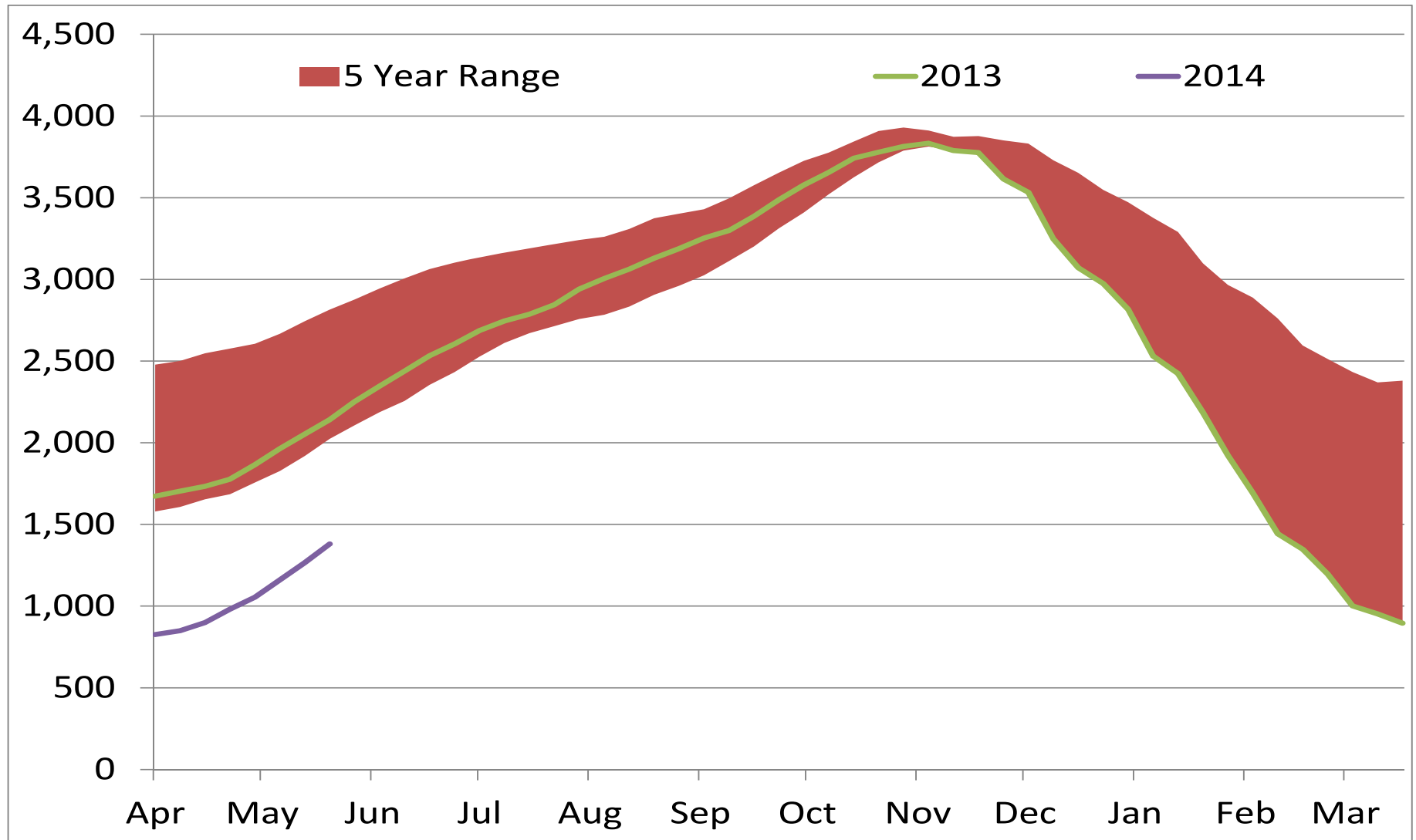


Notes:

Source: Derived from Bloomberg Data

Updated 6/4/2014

EIA National Storage Inventories

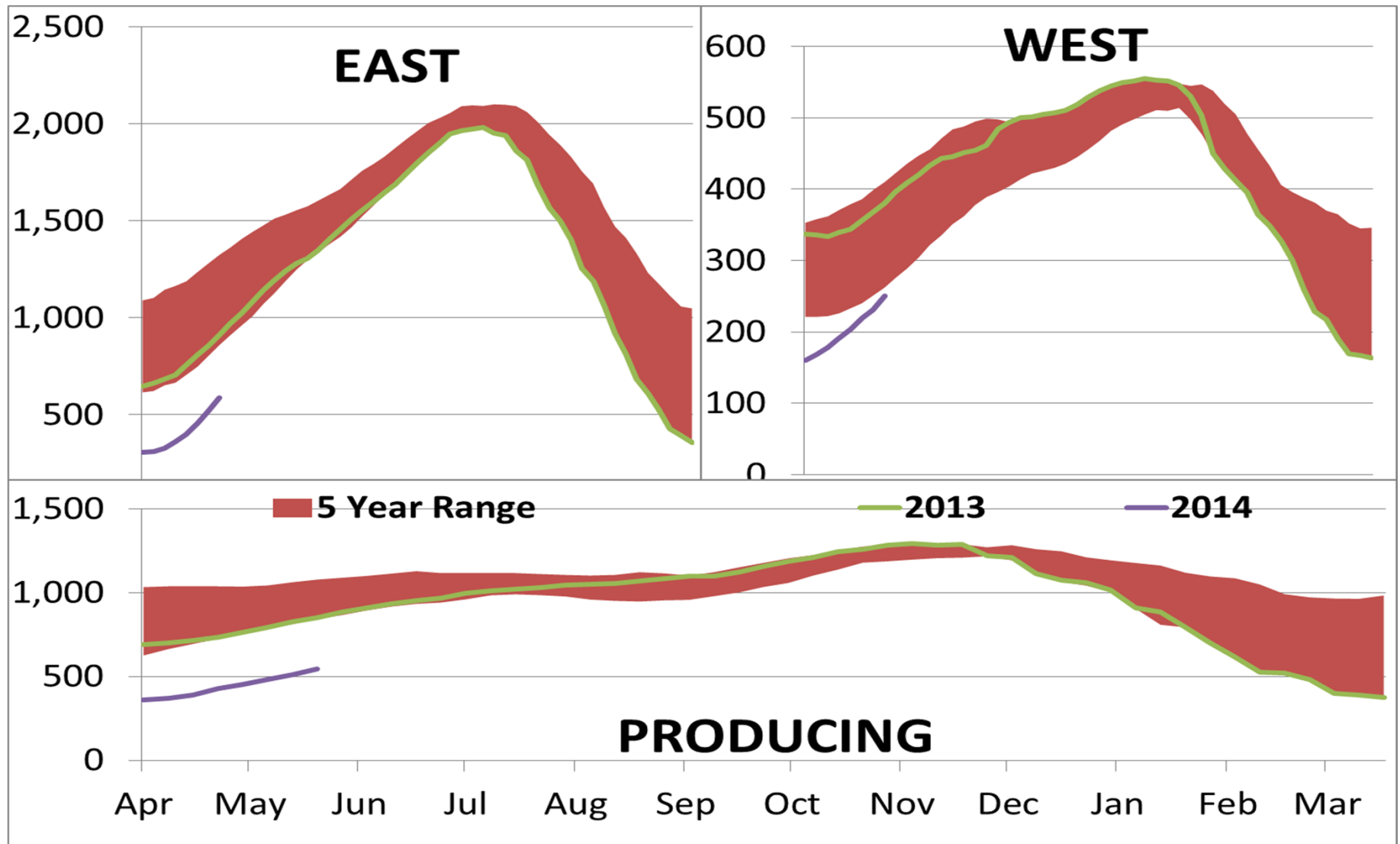


Notes:

Source: Derived from Bloomberg Data

Update: 6/4/2014

EIA Regional Storage Inventories

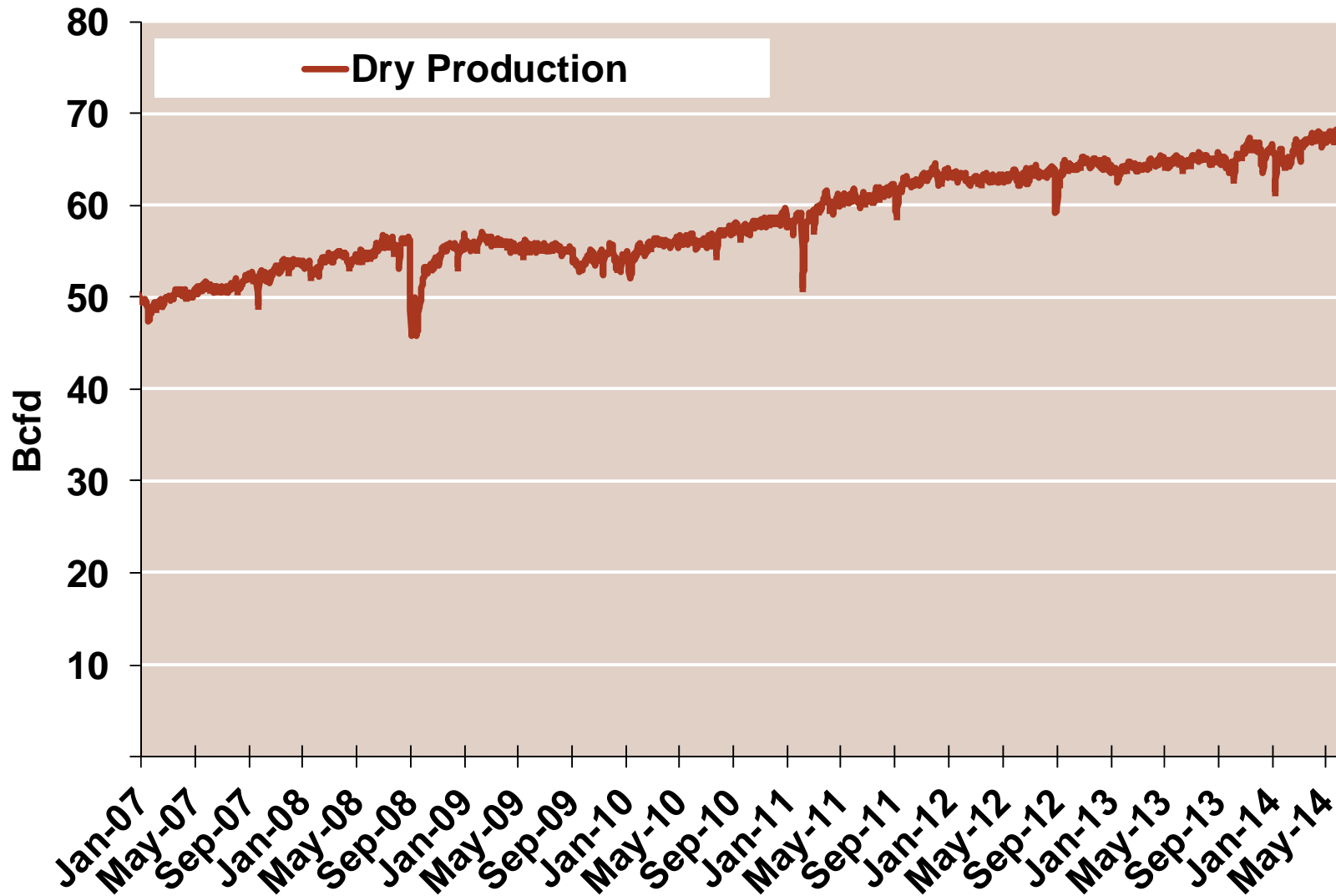


Notes:

Source: Derived from Bloomberg Data

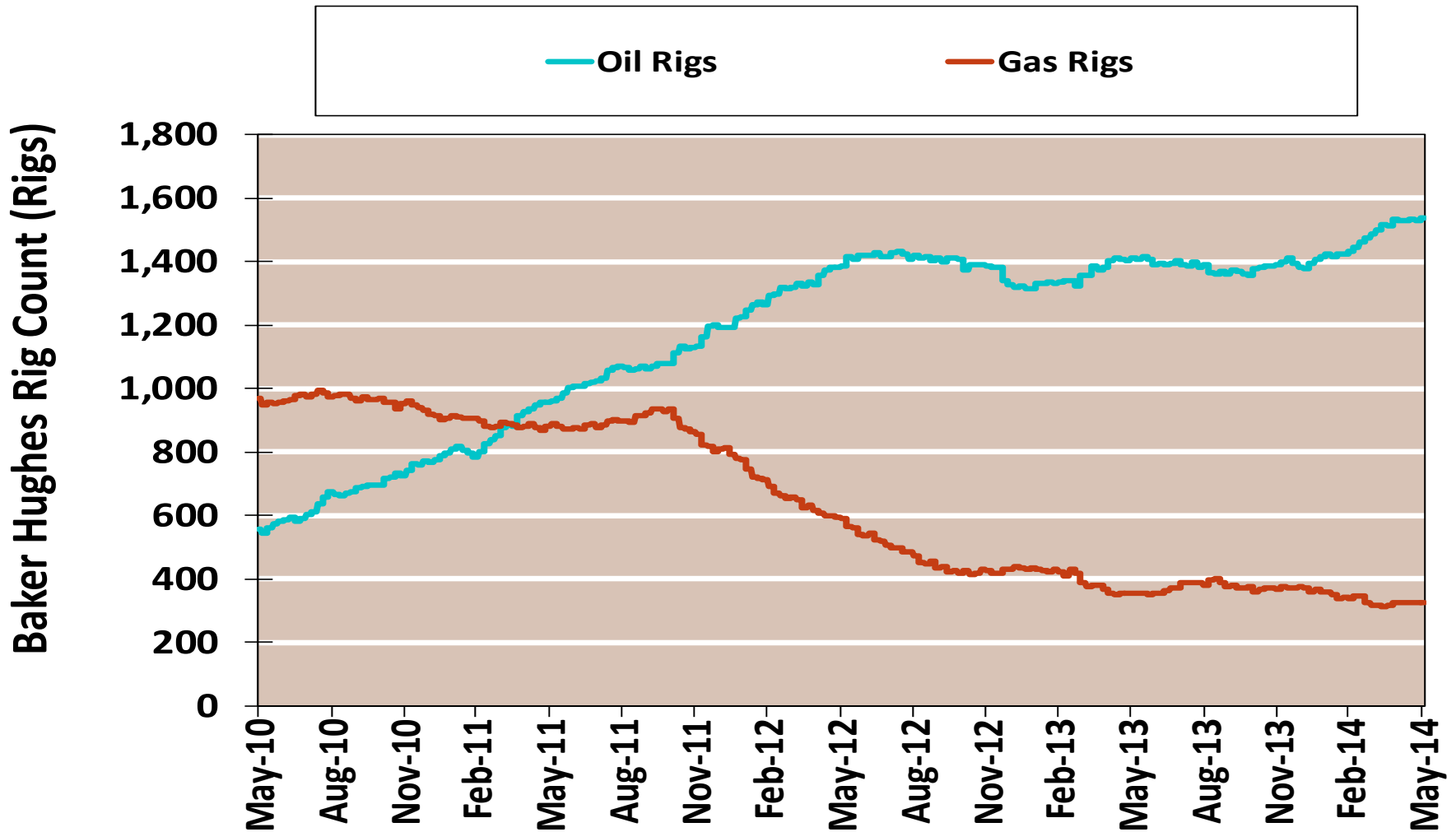
Update: 6/4/2014

Monthly U.S. Dry Gas Production – Lower 48 States



Note: Prior to July 2010, chart was derived from a combination of EIA and Bentek Energy data
Source: Derived from Bentek Energy data

NG Rigs by Type



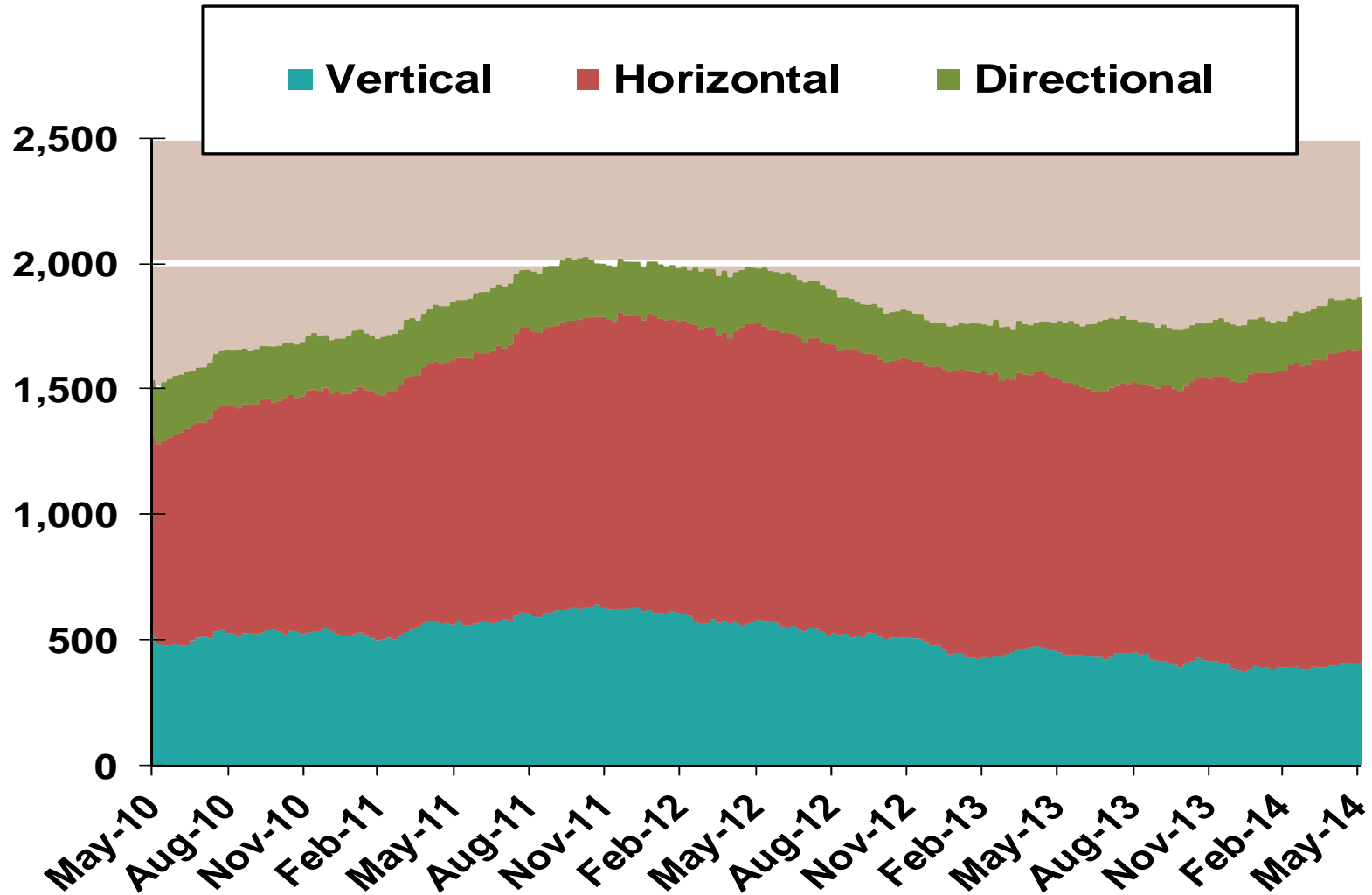
Notes:

Source: Derived from Bloomberg data

Updated 6/4/2014

NG Rig by Direction

Baker Hughes Rigs By Drill Type

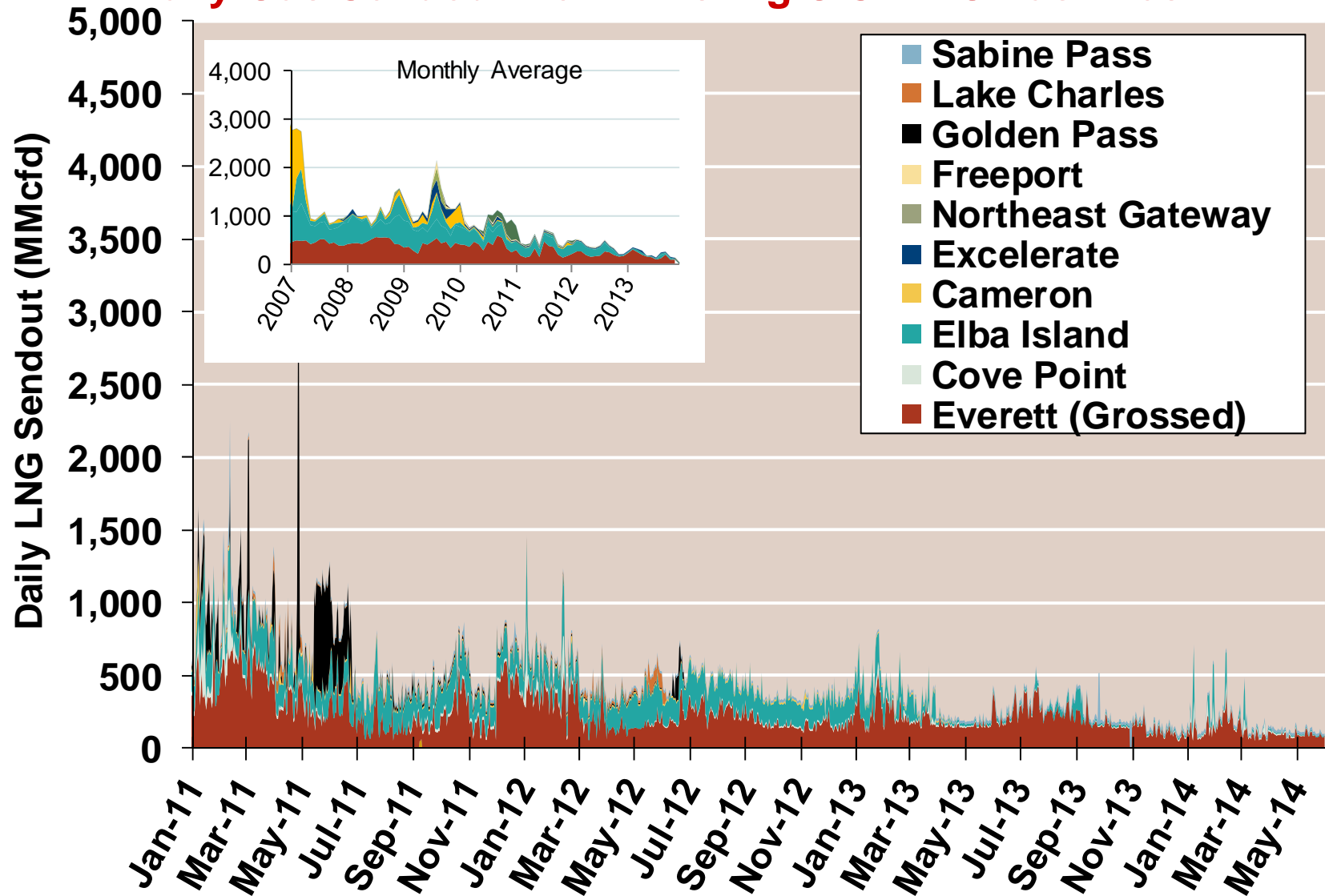


Notes:

Source: Derived from Bloomberg data

Updated 6/4/2014

Daily Gas Sendout from Existing U.S. LNG Facilities



Notes: Everett data includes flows onto the AGT and TGP interstate lines, plus estimates of flows to the Mystic 7 power plant, Keyspan Boston Gas, and LNG trucked out of the terminal. Excludes flows to the Freeport LNG which flows via intrastate pipelines and flows to the Mystic 8 and 9 power plants.

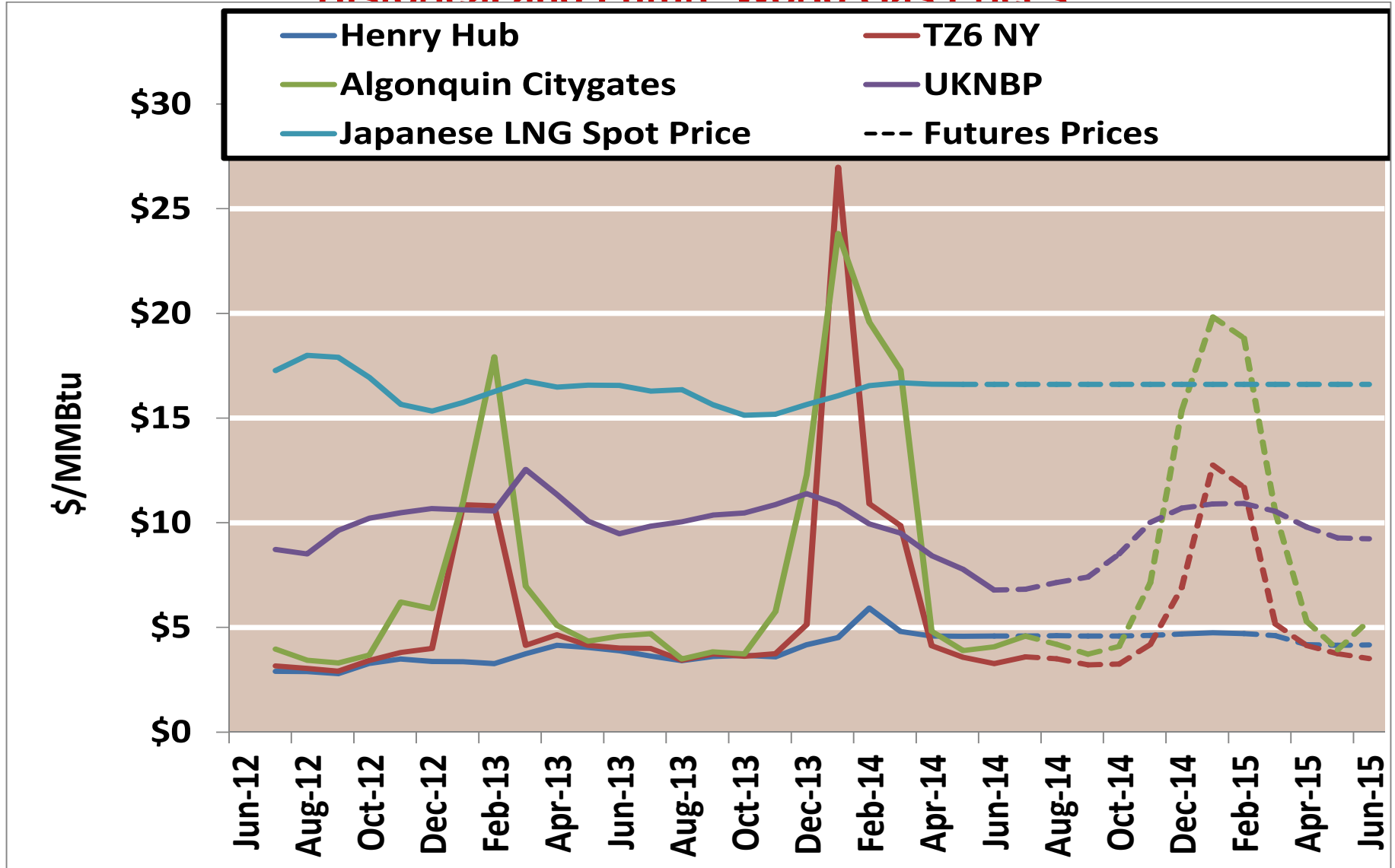
Source: Derived from *Bentek Energy* data

Updated: June 2014

World LNG Estimated July 2014 Landed Prices



Historical and Future World Gas Prices

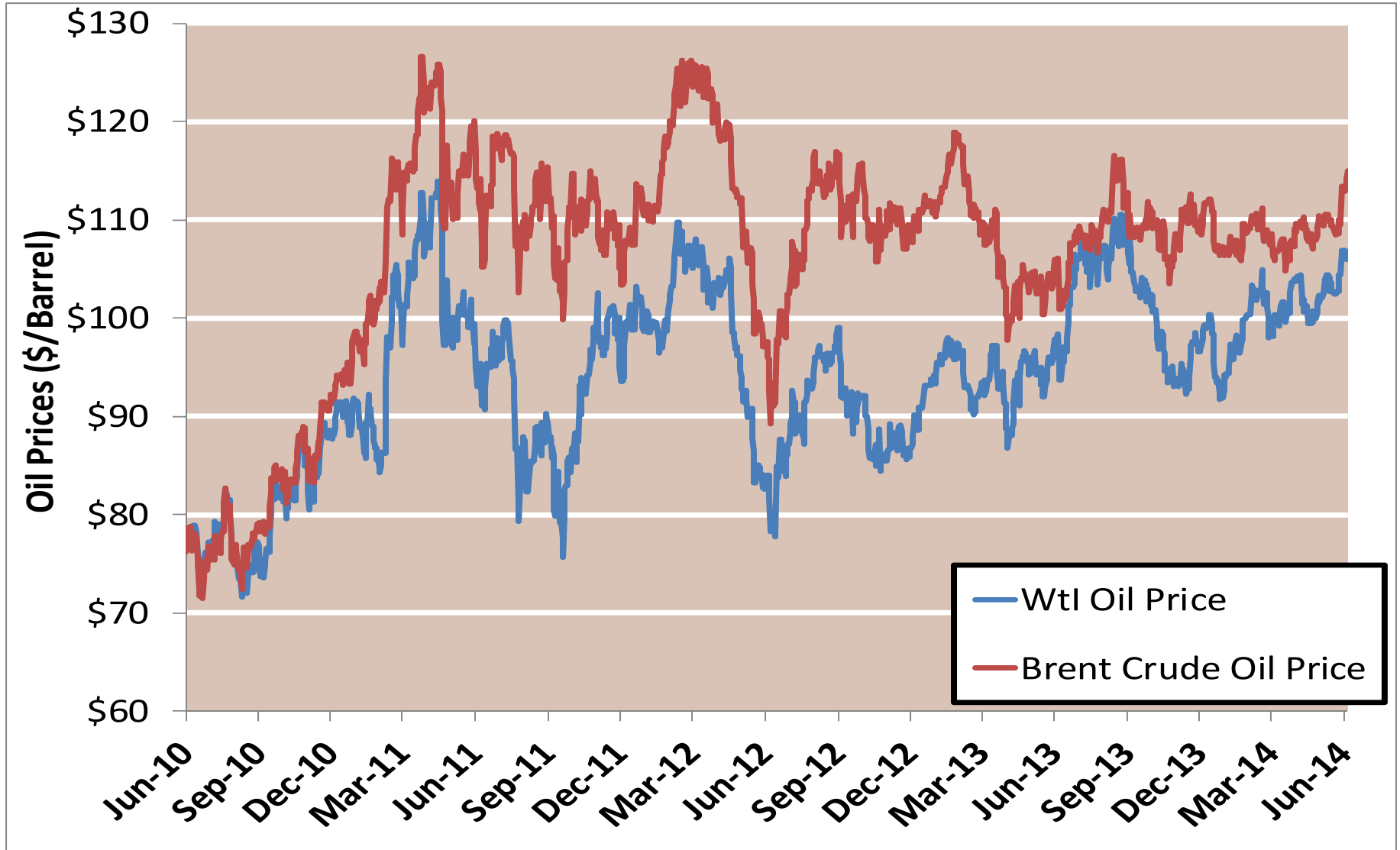


Notes:

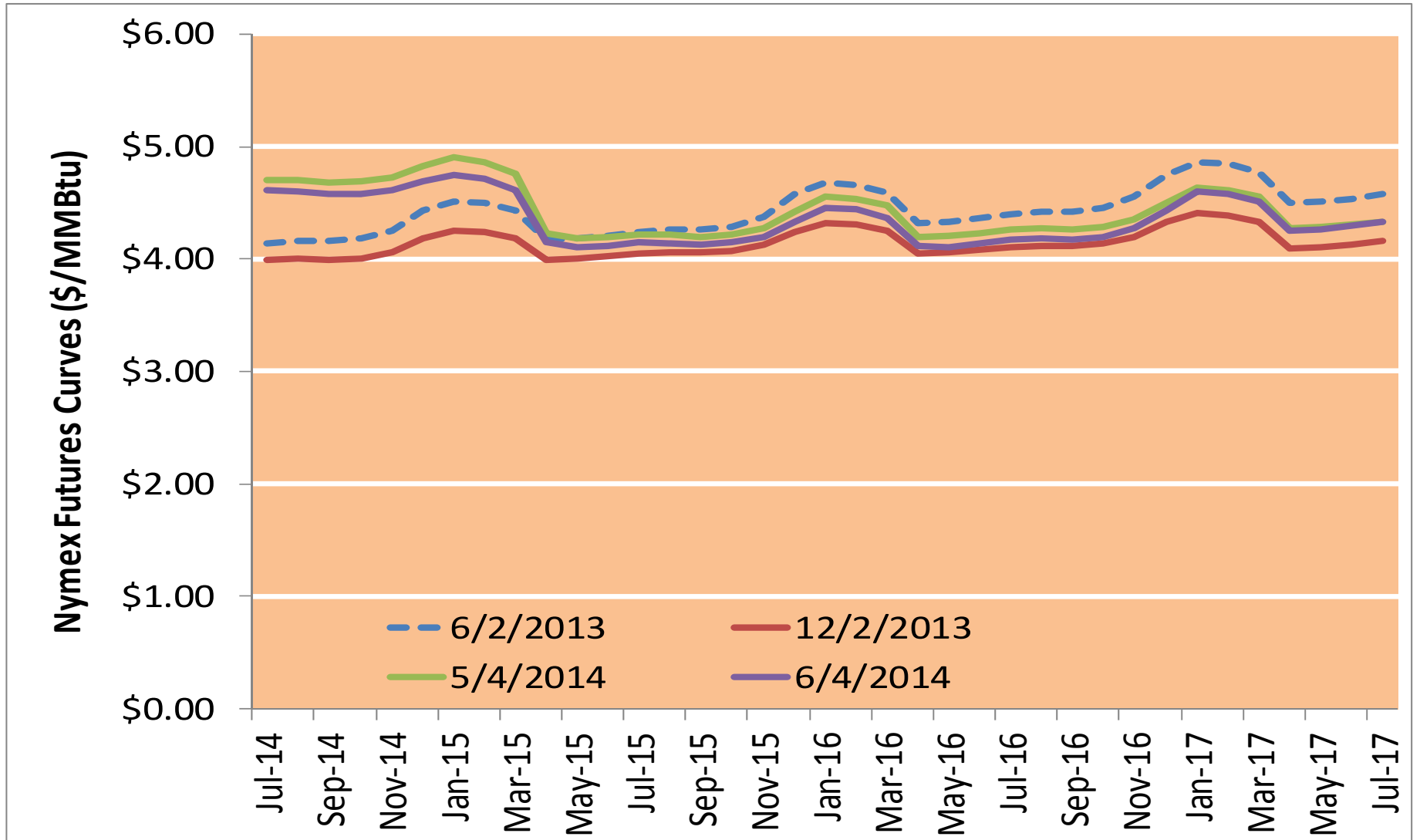
Source: Derived from Bloomberg data

Updated 6/4/2014

WTI vs Brent Crude Oil Price



Nymex Futures Curves



US Total Generation Mix

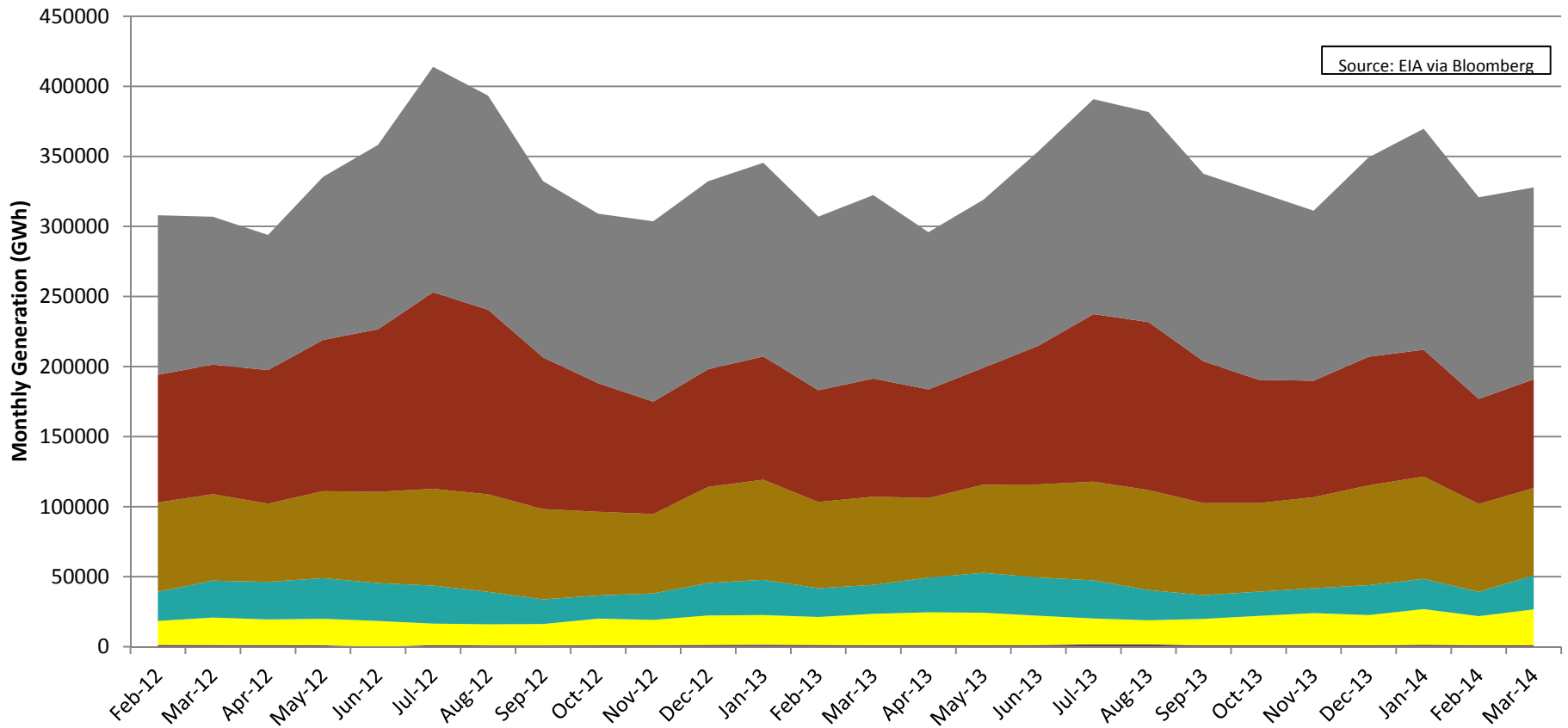
**US Total Generation Mix,
Feb '12 to Mar '14**

States: All

- Coal Generation in Mar '14 was 137004 GWh (42%).
- NatGas Generation in Mar '14 was 77505 GWh (24%).
- Nuclear Generation in Mar '14 was 62395 GWh (19%).
- Hydro Generation in Mar '14 was 24243 GWh (7%).
- Other Renewable Generation in Mar '14 was 25712 GWh (8%).
- Oil Generation in Mar '14 was 965 GWh (0%).

Total Generation in Mar '14 was 327824 GWh.

Source: EIA via Bloomberg





Natural Gas and Fuels Markets

West

West Annual Average Day Ahead Natural Gas Prices

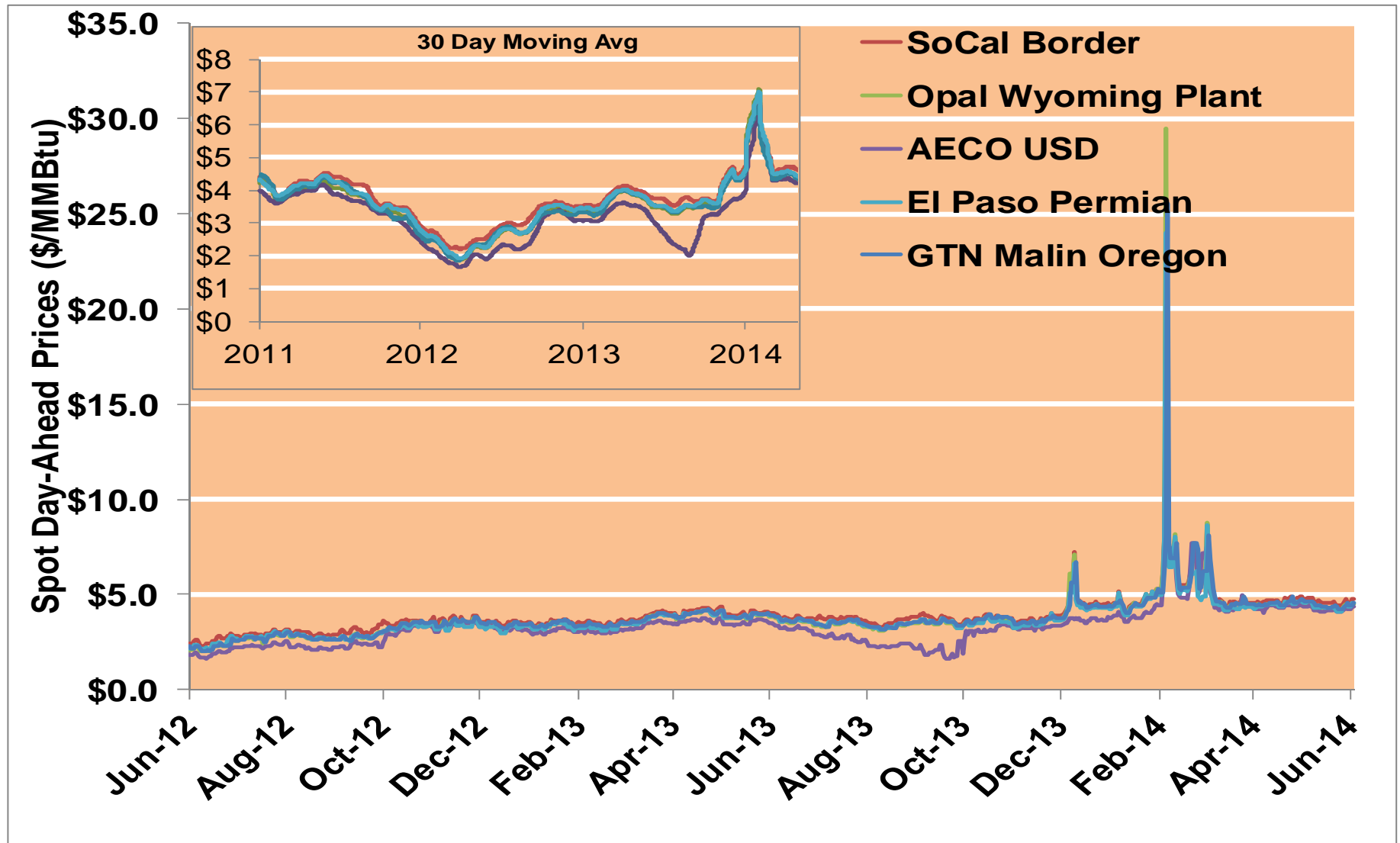
	Average Day Ahead Prices (\$/MMBtu)	SoCal Border	Opal Wyoming Plant	AECO USD	El Paso Permian	GTN Malin Oregon	Henry Hub
2011	Annual	4.05	3.81	3.66	3.87	3.94	3.98
	Summer	4.18	3.89	3.78	3.99	4.03	4.14
	Winter 2011/2012	2.98	2.75	2.49	2.69	2.86	2.74
2012	Annual	2.91	2.68	2.39	2.67	2.73	2.75
	Summer	2.83	2.58	2.24	2.61	2.61	2.69
	Winter 2012/2013	3.62	3.46	3.22	3.38	3.52	3.47
2013	Annual	3.83	3.65	3.09	3.63	3.71	3.70
	Summer	3.82	3.61	2.94	3.63	3.67	3.75
	Winter 2013/2014	4.89	4.88	4.36	4.68	4.88	4.61
2014 YTD	Annual	5.07	5.02	4.68	4.86	5.03	4.88
	Summer	4.65	4.44	4.28	4.42	4.50	4.52
	Winter 2014/2015						

Notes:

Source: ICE

Updated 6/3/2014

West Daily Day-Ahead Prices

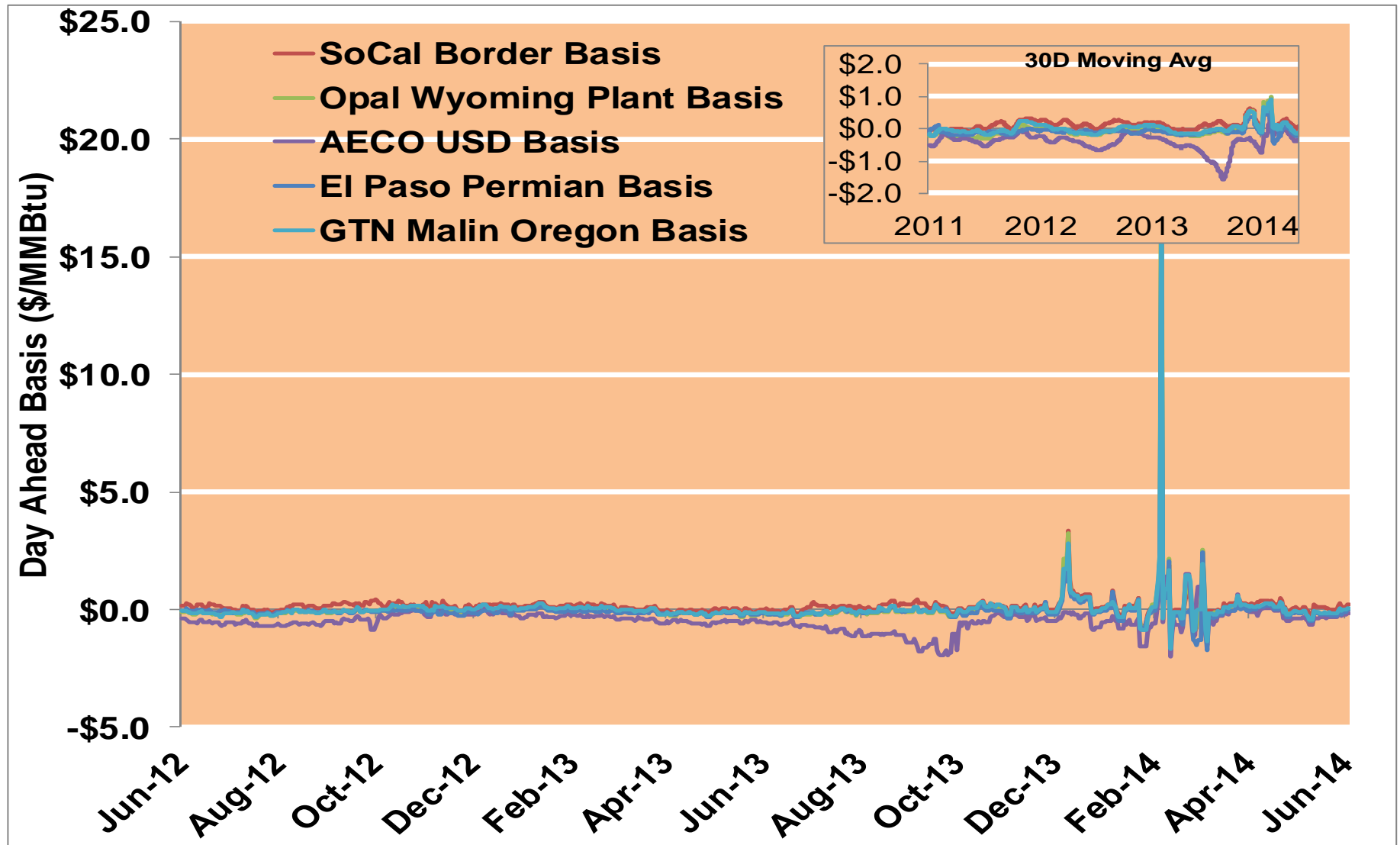


Notes:

Source: ICE

Updated 6/3/2014

West Daily Day-Ahead Basis

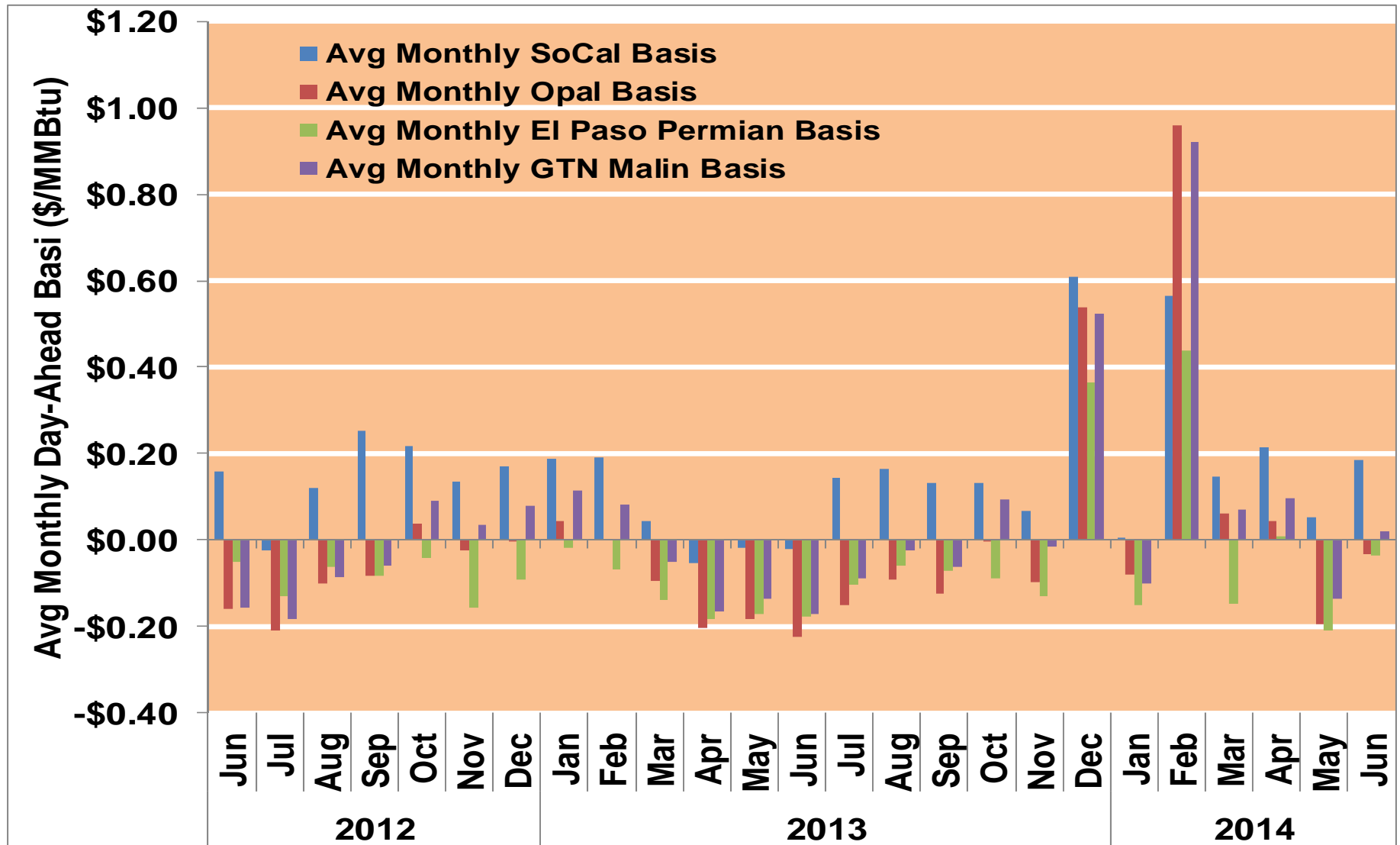


Notes:

Source: ICE

Updated 6/3/2014

West Average Monthly Basis

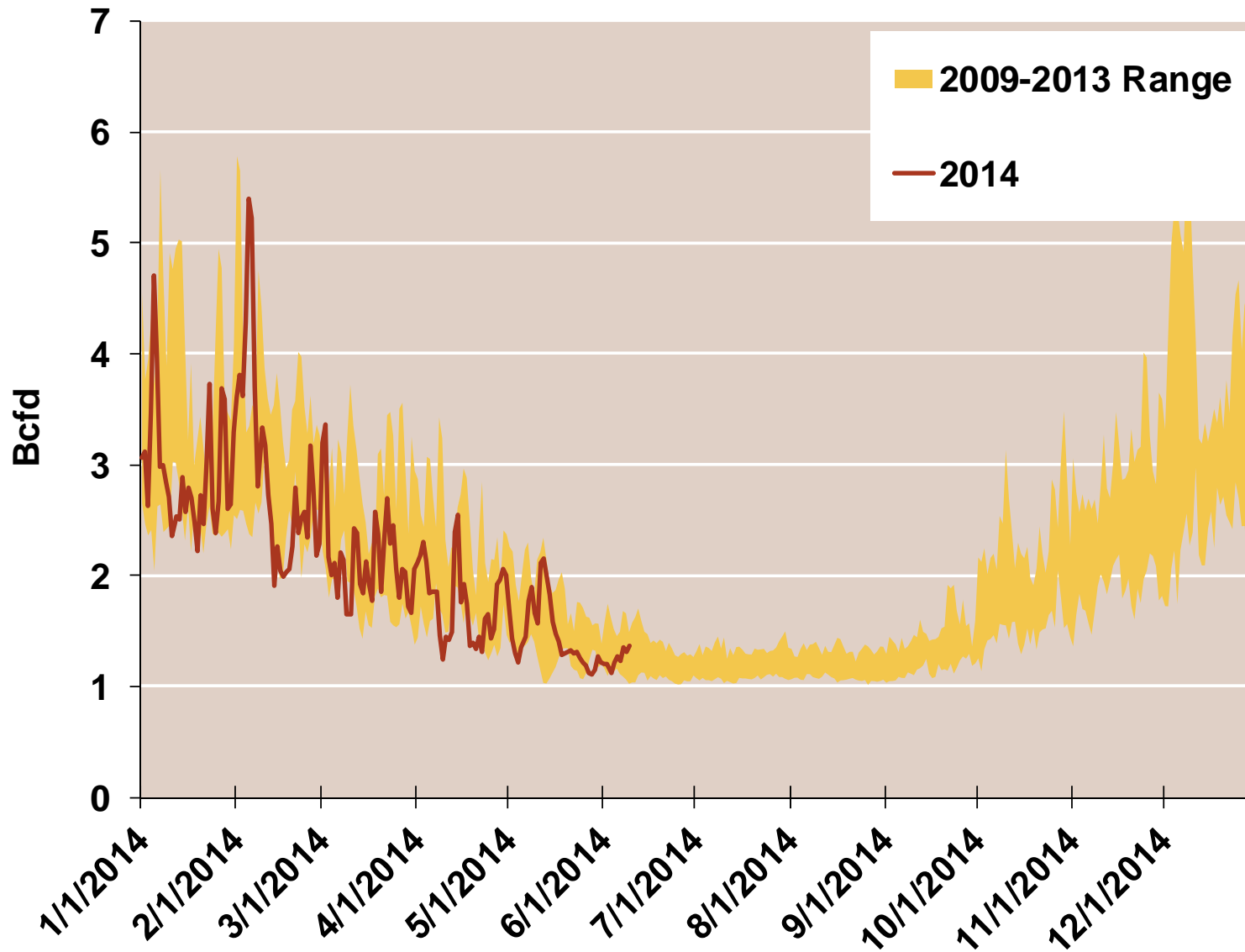


Notes:

Source: ICE

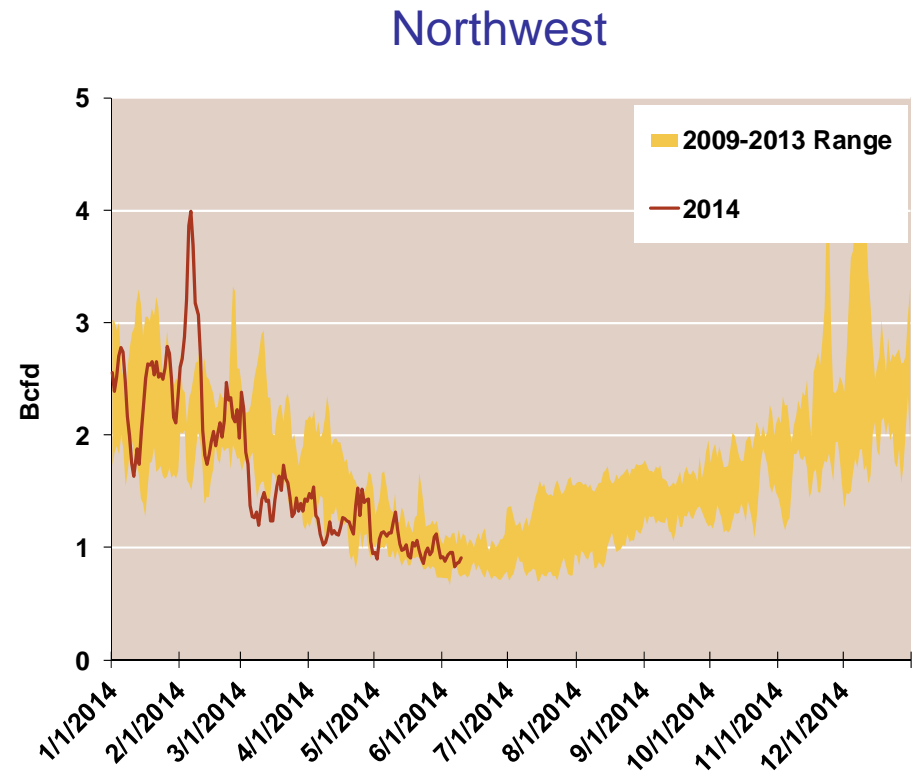
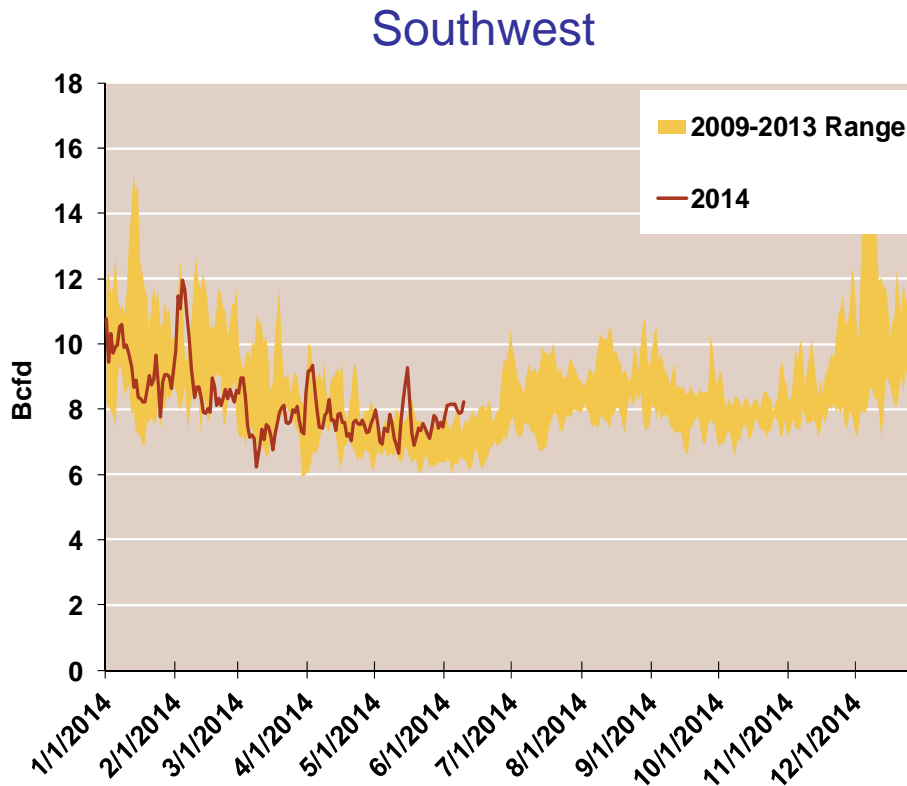
Updated 6/3/2014

Daily Rockies Natural Gas Demand All Sectors



Source: Derived from Bentek Energy data

Daily Southwest and Northwest Natural Gas Demand All Sectors

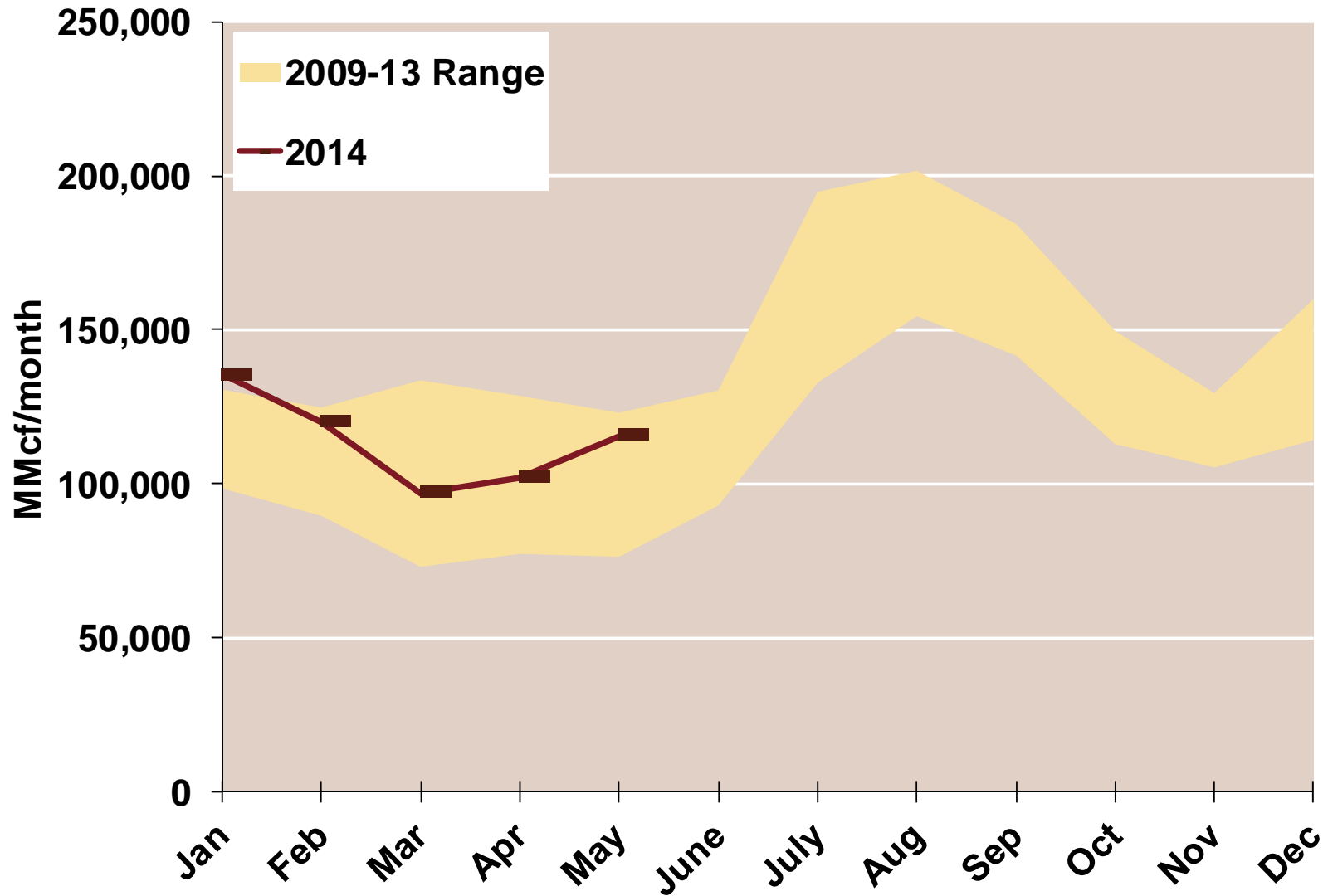


Source: Derived from *Bentek Energy* data

Note: Data derived from interstate natural gas pipeline flows.

Updated: May 2014

West Natural Gas Consumption for Power Generation

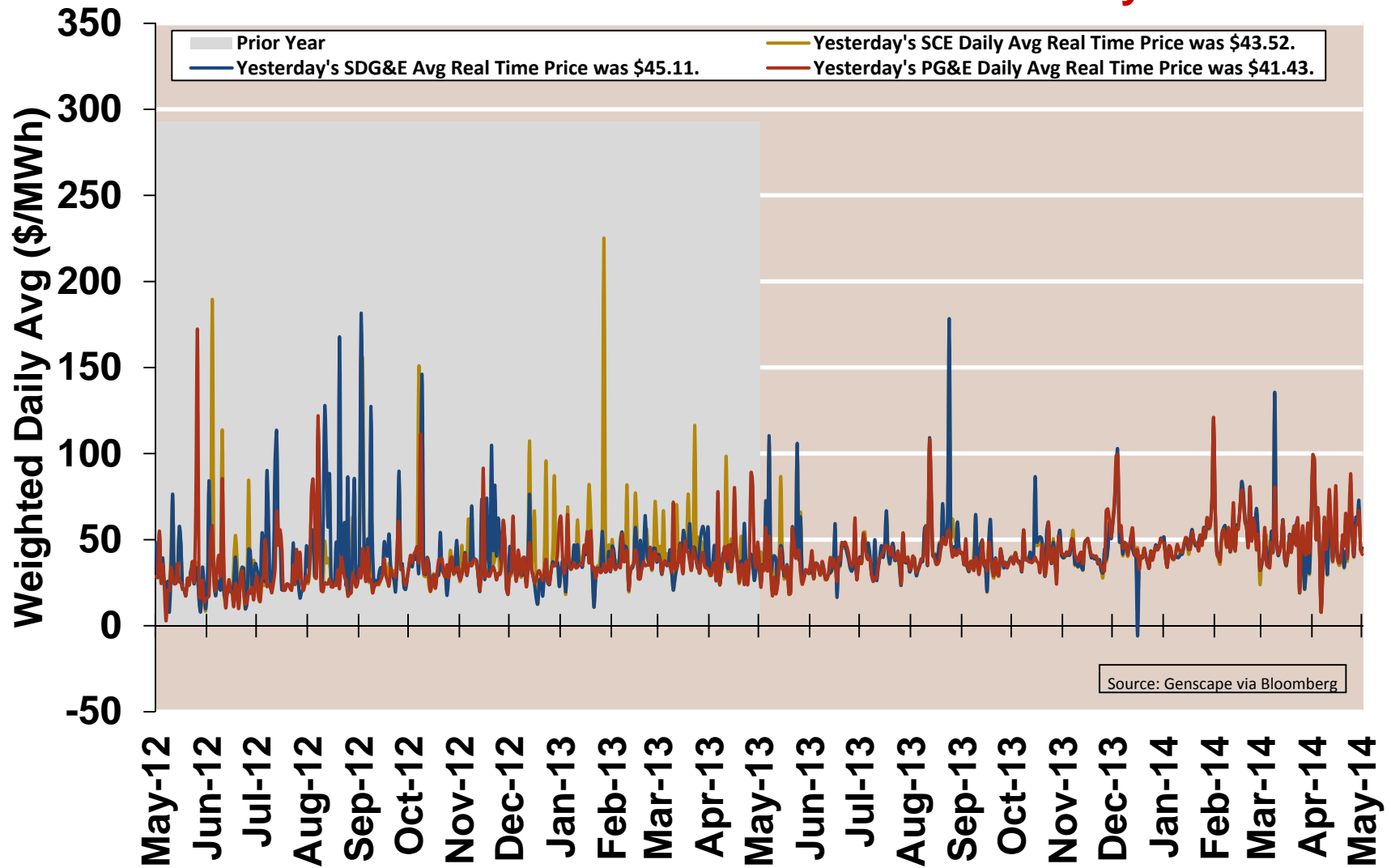




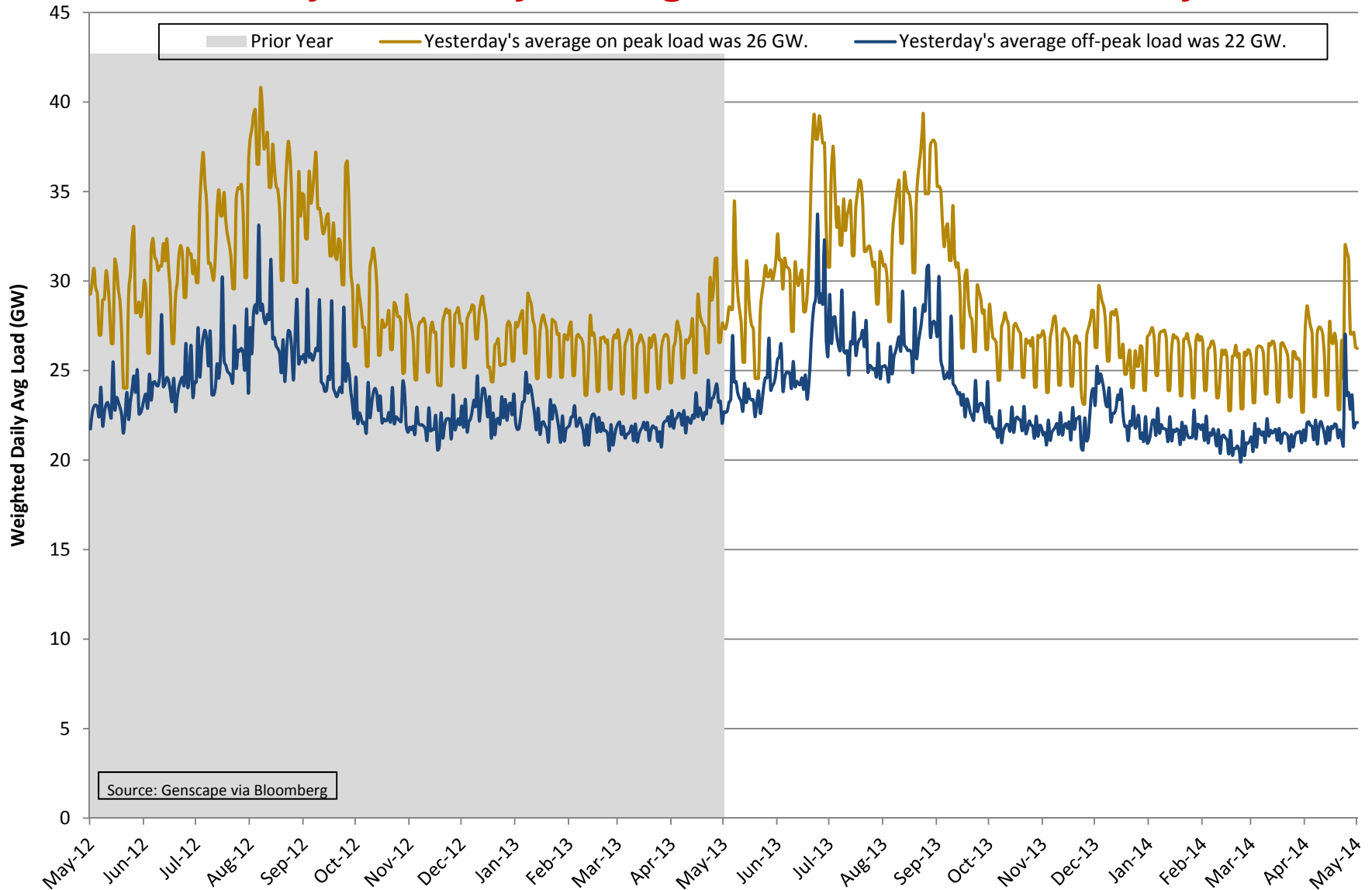
Electricity Markets

West

CAISO Real Time Prices—Two Year History



CAISO System Daily Average Load —Two Year History

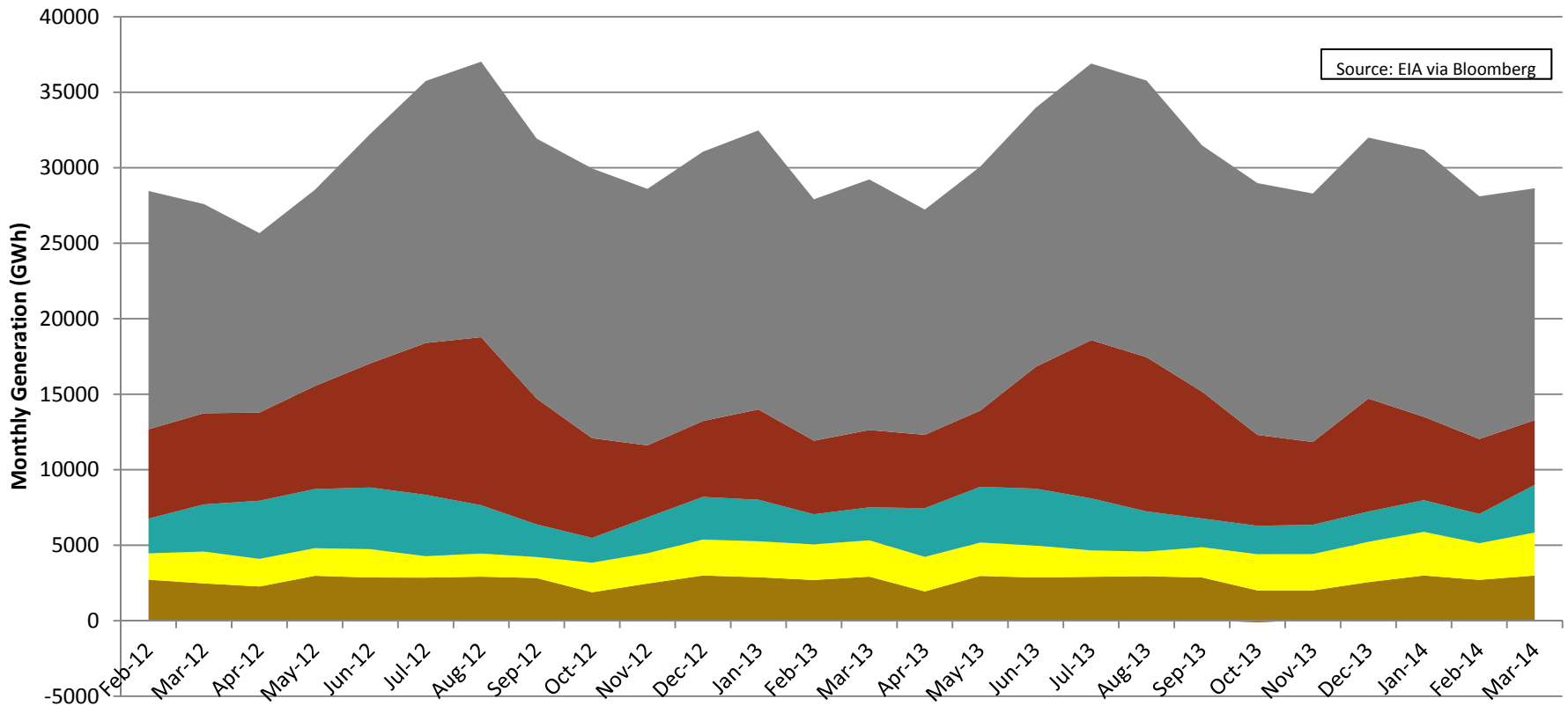


Mountain Regional Generation Mix, Feb '12 to Mar '14

States: AZ, CO, ID, MT, NM, NV, UT, WY

- Coal Generation in Mar '14 was 15353 GWh (54%).
 - Gas Generation in Mar '14 was 4285 GWh (15%).
 - Hydro Generation in Mar '14 was 3157 GWh (11%).
 - Othr Renew Generation in Mar '14 was 2842 GWh (10%).
 - Nuclear Generation in Mar '14 was 2967 GWh (10%).
 - Oil Generation in Mar '14 was 30 GWh (0%).
- Total Generation in Mar '14 was 28634 GWh.

Source: EIA via Bloomberg

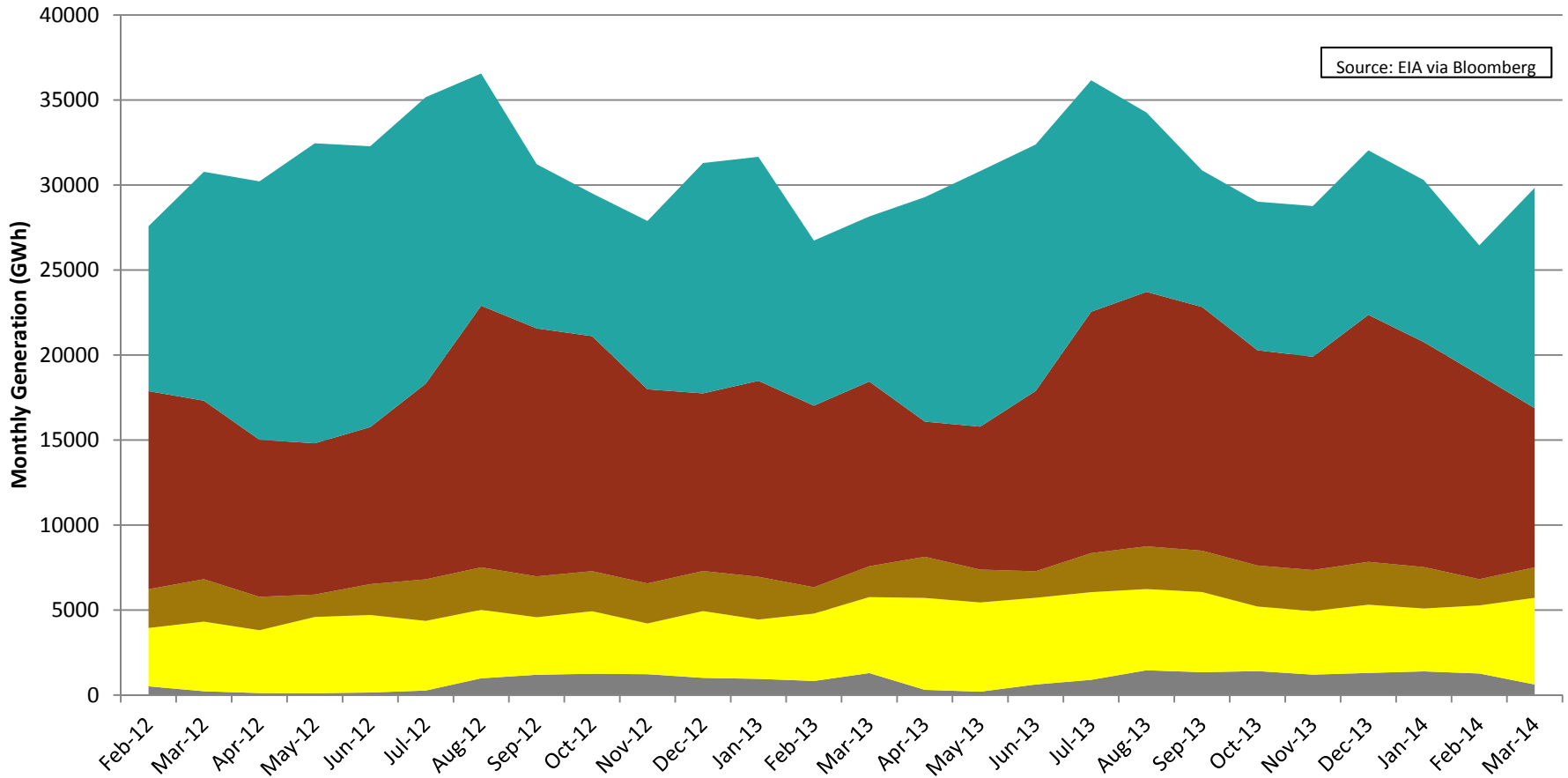


Pacific Contiguous Regional Generation Mix, Feb '12 to Mar '14

States: CA, OR, WA

- Hydro Generation in Mar '14 was 12962 GWh (43%).
- Gas Generation in Mar '14 was 9361 GWh (31%).
- Nuclear Generation in Mar '14 was 1796 GWh (6%).
- Renew Generation in Mar '14 was 5101 GWh (17%).
- Coal Generation in Mar '14 was 604 GWh (2%).
- Oil Generation in Mar '14 was 13 GWh (0%).
- Total Generation in Mar '14 was 29837 GWh.

Source: EIA via Bloomberg

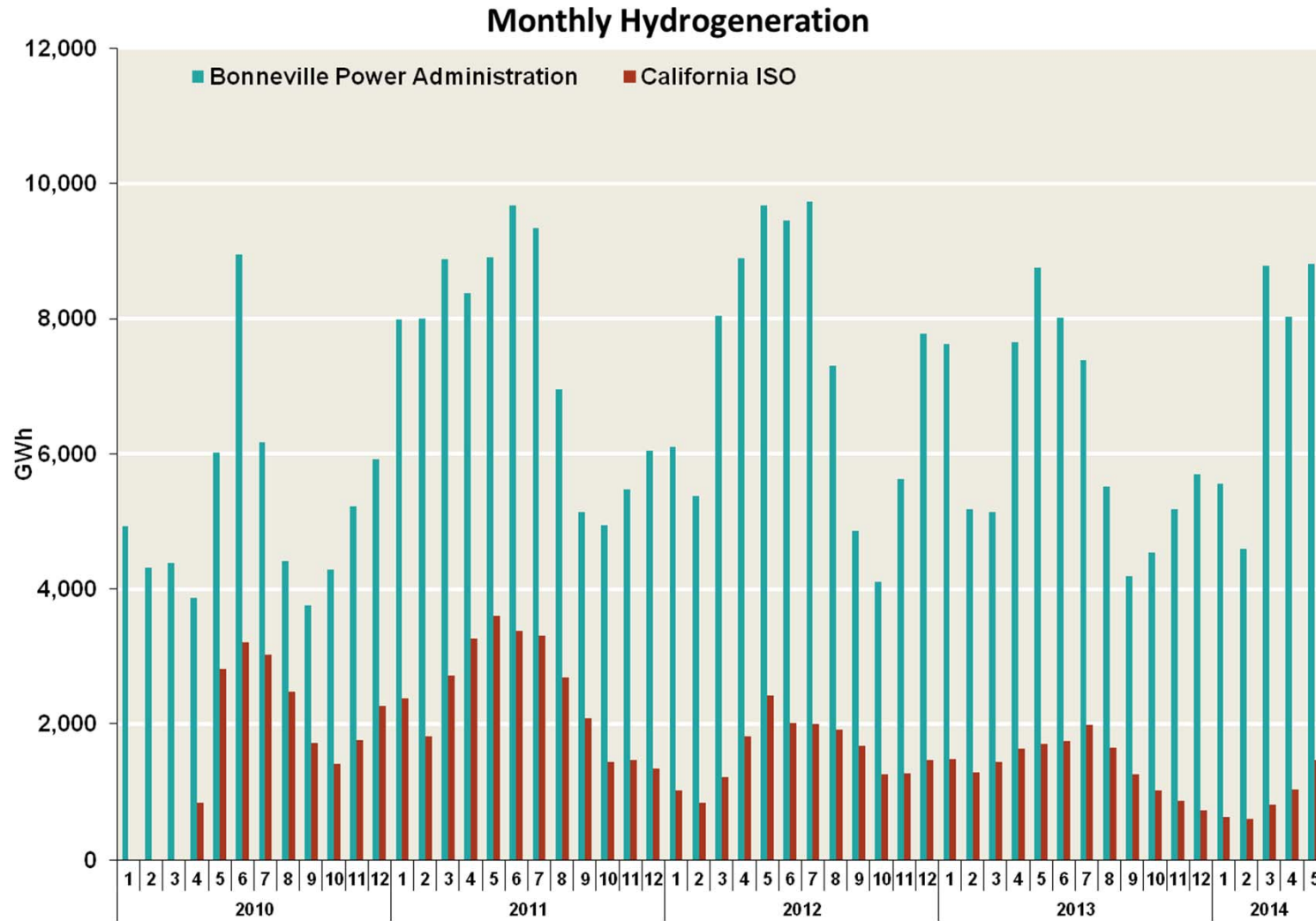


Northwest Snowpack

Northwest Snowpack Improves			
State/Region	Snow Water Equivalent (% of Historic Median)		
	One Year Ago	One Month Ago	Current
	2/2/2014	3/2/2014	4/2/2014
California	46%	27%	33%
Idaho	87%	78%	114%
Montana	96%	111%	142%
Oregon	94%	38%	61%
Washington	115%	53%	99%
Columbia River Basin	98%	64%	102%

Source: California Department of Water Resources, U.S. Department of Agriculture Natural Resources Conservation Service

Monthly Hydrogeneration by Footprint



Source: Derived from Energy Velocity and BPA data.

Hydrogeneration in BPA by Year

