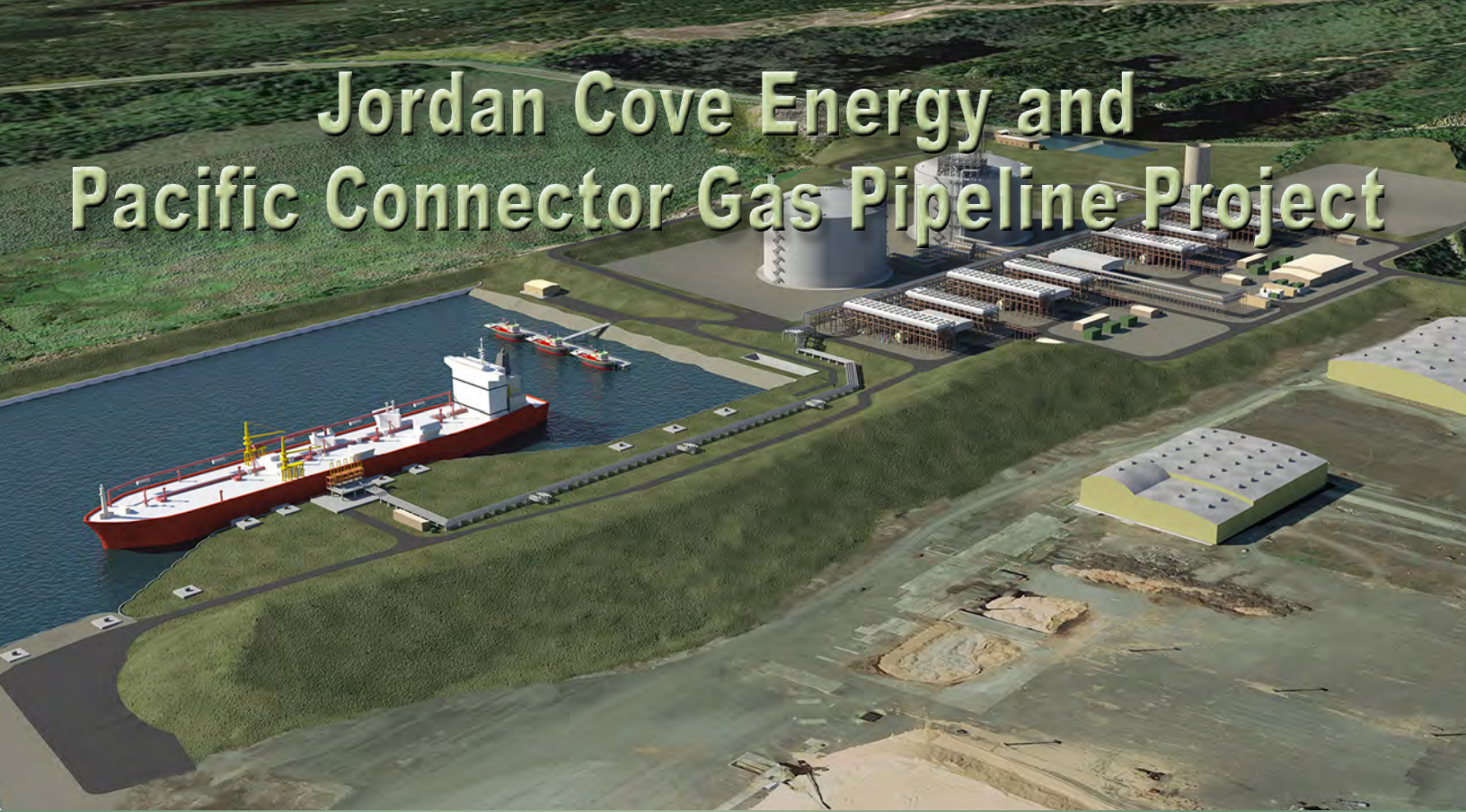


Jordan Cove Energy and Pacific Connector Gas Pipeline Project



Final Environmental Impact Statement

Jordan Cove Energy Project, L.P.

Docket No. CP13-483-000

Pacific Connector Gas Pipeline, L.P.

Docket No. CP13-492-000

DOE Docket No. FE 12-32-LNG ■ DOE/EIS-0489

FERC/EIS 0256F

September 2015

Cooperating Agencies

USDA Forest Service, Pacific Northwest Region
Department of the Army, Corps of Engineers, Portland District
US Department of Energy
US Environmental Protection Agency, Region 10
US Department of Homeland Security Coast Guard, Portland
US Department of Transportation, Pipeline and Hazardous Materials Safety Administration
US Department of the Interior Bureau of Land Management, Oregon State Office
US Department of the Interior Bureau of Reclamation, Klamath Basin Area Office
US Department of the Interior Fish and Wildlife Service, Oregon State Office



Federal Energy Regulatory Commission

Office of Energy Projects
Washington, DC 20426

Final Environmental Impact Statement

**JORDAN COVE ENERGY AND
PACIFIC CONNECTOR GAS PIPELINE
PROJECT**

Jordan Cove Energy Project, L.P.
Pacific Connector Gas Pipeline Project, L.P.

Docket Nos. CP13-483-000
CP13-492-000

FERC/EIS – 0256F

Federal Energy Regulatory Commission

Office of Energy Projects

Washington, DC 20426

Cooperating Agencies

US Department of Agriculture Forest Service, Pacific Northwest Region

Department of the Army, Corps of Engineers, Portland District

US Department of Energy

US Environmental Protection Agency, Region 10

US Department of Homeland Security Coast Guard, Portland

US Department of the Interior Bureau of Land Management, Oregon State Office

US Department of the Interior Bureau of Reclamation, Klamath Basin Area Office

US Department of the Interior, Fish and Wildlife Service, Oregon State Office

US Department of Transportation, Pipeline and Hazardous Materials Safety Administration

September 2015

FEDERAL ENERGY REGULATORY COMMISSION
WASHINGTON, D.C. 20426

OFFICE OF ENERGY PROJECTS

In Reply Refer To:

OEP/DG2E/Gas 3

Jordan Cove Energy Project, L.P.

Docket No. CP13-483-000

Pacific Connector Gas Pipeline, L.P.

Docket No. CP13-492-000

FERC/EIS-0256D

TO THE PARTY ADDRESSED:

The staff of the Federal Energy Regulatory Commission (FERC or Commission) has prepared this final environmental impact statement (EIS) for the Jordan Cove Liquefaction Project proposed by Jordan Cove Energy Project LP (Jordan Cove) and the Pacific Connector Pipeline Project proposed by Pacific Connector Gas Pipeline LP (Pacific Connector) (collectively referred to as the JCE & PCGP Project, or the Project) in the above-referenced dockets. Under Section 3 of the Natural Gas Act (NGA), Jordan Cove requests authorization to produce a maximum of 6.8 million metric tons per annum of liquefied natural gas (LNG) at a terminal in Coos Bay, Oregon for export to overseas markets. Pacific Connector seeks a Certificate of Public Convenience and Necessity under Section 7 of the NGA to transport about 1.07 billion cubic feet per day of natural gas in a pipeline from the Malin hub to the Jordan Cove terminal, crossing portions of Klamath, Jackson, Douglas, and Coos Counties, Oregon.

The final EIS assesses the potential environmental effects of the construction and operation of the Project in accordance with the requirements of the National Environmental Policy Act (NEPA). The FERC staff concludes that approval of the Project would result in some limited adverse environmental impacts. However, if the Project is constructed and operated in accordance with applicable laws and regulations, with implementation of Jordan Cove's and Pacific Connector's proposed mitigation measures, and the additional mitigation measures recommended by the FERC staff and federal land managing agencies in this EIS, environmental impacts would be reduced to less-than-significant levels.

The United States (U.S.) Department of Agriculture Forest Service (Forest Service); U.S. Army Corps of Engineers; U.S. Department of Energy; U.S. Environmental Protection Agency; U.S. Department of Homeland Security Coast Guard; U.S. Department of the Interior Bureau of Land Management (BLM), Bureau of Reclamation (Reclamation), and Fish and Wildlife Service; and the Pipeline and Hazardous Materials Safety Administration within the U.S. Department of Transportation participated as cooperating agencies in preparation of this EIS. Cooperating agencies have jurisdiction by law or special expertise with respect to resources potentially affected by the proposal and participate in the NEPA analysis.

The BLM, with the concurrence of the Forest Service and Reclamation, would adopt and use the EIS to consider issuing a Right-of-Way Grant for the portion of the Project on federal lands. Both the BLM and the Forest Service would also use this EIS to evaluate proposed amendments to their District or National Forest land management plans to make provision for the Pacific Connector pipeline. Other cooperating agencies would use this EIS in their regulatory

process, and to satisfy compliance with the NEPA and other related federal environmental laws (including the National Historic Preservation Act). Although the cooperating agencies provided input to the conclusions and recommendations presented in the EIS, the agencies would present their own conclusions and recommendations in their respective Records of Decision for the Project.

Jordan Cove's proposed facilities would include an access channel from the existing Coos Bay navigation channel; a terminal marine slip including a single LNG vessel berth and tug boat berth; a loading platform and transfer pipeline; two LNG storage tanks; four liquefaction trains and associated refrigerant storage bullets; fire water ponds; ground flares; 420-megawatt South Dune Power Plant; support buildings; utility and access corridor between the terminal and the power plant; Southwest Oregon Resource Security Center; and a natural gas treatment plant.

Pacific Connector's proposed facilities would include a 232-mile-long, 36-inch-diameter underground welded steel pipeline between Malin and Coos Bay; the 41,000 horsepower Klamath Compressor Station; the Klamath-Eagle Receipt Meter Station and Klamath-Beaver Receipt Meter Station within the compressor station tract; the Clarks Branch Delivery Meter Station at the interconnection with Northwest Pipeline's Grants Pass Lateral; the Jordan Cove Delivery Meter Station at the interconnection with the Jordan Cove LNG terminal; 5 pig¹ launchers and receivers; 17 mainline block valves; and 11 communication towers co-located with other facilities.

The FERC mailed copies of the final EIS to federal, state, and local government representatives and agencies; elected officials; regional environmental and non-governmental organizations; Indian tribes; affected landowners; newspapers and libraries in the project area; other interested individuals and groups; and parties to the proceedings. Paper copies of this EIS were mailed to those specifically requesting them; all others on our environmental mail list received a compact disk version. In addition, the final EIS is available for public viewing on the FERC's website (www.ferc.gov) using the eLibrary link. A limited number of hard copies are available for distribution and public inspection at:

Federal Energy Regulatory Commission
Public Reference Room
888 First Street NE, Room 2A
Washington, DC 20426
(202) 502-8371

Additional information about the Project is available from the Commission's Office of External Affairs, at **(866) 208-FERC**, or on the FERC (www.ferc.gov) using the eLibrary link. Click on the eLibrary link, click on "General Search," and enter the docket number excluding the last three digits in the Docket Number field (i.e., CP13-483). Be sure you have selected an appropriate date range. For assistance, please contact FERC Online Support at FercOnline

¹ A "pig" is a tool for cleaning and inspecting the inside of a pipeline.

Support@ferc.gov or toll free at (866) 208-3676; for TTY, contact (202) 502-8659. The eLibrary link also provides access to the texts of formal documents issued by the Commission, such as orders, notices, and rulemakings.

In addition, the Commission offers a free service called eSubscription that allows you to keep track of all formal issuances and submittals in specific dockets. This can reduce the amount of time you spend researching proceedings by automatically providing you with notification of these filings, document summaries, and direct links to the documents. Go to www.ferc.gov/docs-filing/esubscription.asp.

TABLE OF CONTENTS

VOLUME I

1.0	INTRODUCTION	1-1
1.1	PROJECT SUMMARY.....	1-1
1.1.1	Background.....	1-3
1.1.2	Current Proposals.....	1-5
1.1.3	Major Differences Between the Import and Export Proposals.....	1-6
1.1.4	Changes Since the November 2014 DEIS.....	1-12
1.2	ENVIRONMENTAL SETTING.....	1-12
1.3	PURPOSE AND NEED.....	1-12
1.3.1	Applicants' Objectives for the Proposed Project.....	1-13
1.3.2	FERC and the Federal Cooperating Agencies Purpose and Scope.....	1-14
1.3.3	Issues Considered Outside the Scope of this EIS.....	1-21
1.4	PERMITS, APPROVALS, AND CONSULTATIONS.....	1-23
1.4.1	Other Federal Environmental Laws.....	1-23
1.4.2	Review and Use of the FERC EIS by the BLM, Forest Service, and Reclamation.....	1-42
1.4.3	Reviews by Other Federal Agencies.....	1-49
1.4.4	State Agency Permits and Approvals.....	1-52
1.5	PUBLIC REVIEW AND COMMENTS.....	1-59
2.0	DESCRIPTION OF THE PROPOSED ACTION	2-1
2.1	PROJECT COMPONENTS.....	2-1
2.1.1	Jordan Cove LNG Terminal.....	2-1
2.1.2	Pacific Connector Pipeline and Associated Aboveground Facilities.....	2-32
2.1.3	BLM and Forest Service Land Management Plan Amendment Actions.....	2-38
2.1.4	Mitigation Plan Specific to Federal Lands.....	2-53
2.1.5	Specific Off-site Mitigation Projects for Reclamation.....	2-72
2.1.6	Right-of-Way Grant to Cross Federal Lands.....	2-72
2.1.7	Plan of Development on Federal Lands.....	2-75
2.1.8	Mitigation on Non-Federal Lands.....	2-76
2.2	NON-JURISDICTIONAL FACILITIES.....	2-77
2.2.1	LNG Vessels.....	2-77
2.2.2	South Dunes Power Plant.....	2-77
2.2.3	Southwest Oregon Regional Safety Center.....	2-79
2.2.4	Utility Connections.....	2-79
2.2.5	Port Activities.....	2-83
2.3	LAND REQUIREMENTS.....	2-84
2.3.1	Jordan Cove Liquefaction Project Facilities.....	2-84
2.3.2	Pacific Connector Pipeline and Associated Aboveground Facilities.....	2-85
2.4	CONSTRUCTION PROCEDURES.....	2-94
2.4.1	Jordan Cove's LNG Terminal.....	2-95

2.4.2	Pacific Connector Pipeline and Associated Aboveground Facilities	2-106
2.5	ENVIRONMENTAL COMPLIANCE AND MONITORING	2-122
2.5.1	FERC Environmental Compliance Monitoring	2-122
2.5.2	Monitoring by Land Managing Agencies on Federal Lands.....	2-124
2.6	OPERATION AND MAINTENANCE PROCEDURES.....	2-136
2.6.1	LNG Terminal Facilities	2-136
2.6.2	Pipeline and Associated Aboveground Facilities.....	2-136
2.7	FUTURE PLANS AND ABANDONMENT	2-137
3.0	ALTERNATIVES	3-1
3.1	NO ACTION ALTERNATIVE.....	3-2
3.1.1	Federal Energy Regulatory Commission’s No Action Alternative	3-2
3.1.2	Federal Land Management Agencies’ No Action Alternative	3-2
3.1.3	U.S. Army Corps of Engineers’ No Action Alternative	3-3
3.1.4	Renewable Energy Alternatives.....	3-3
3.2	SYSTEM ALTERNATIVES	3-3
3.2.1	Pipeline System Alternatives	3-3
3.2.2	LNG System Alternatives.....	3-6
3.3	LNG TERMINAL ALTERNATIVES AT COOS BAY	3-12
3.3.1	Regional Review of Potential Ports on the Continental West Coast.....	3-12
3.3.2	Coos Bay Terminal Alternatives.....	3-13
3.4	PIPELINE ALTERNATIVES	3-28
3.4.1	Pipeline Alternative Routes Eliminated from Detailed Analyses	3-28
3.4.2	Pipeline Alternative Routes Analyzed in Detail	3-33
3.4.3	Pipeline Alternatives Over Federal Lands.....	3-77
3.4.4	Minor Route Variations Incorporated into the Proposed Pipeline Route.....	3-79
3.4.5	Compressor Station Alternatives	3-84
4.0	ENVIRONMENTAL ANALYSIS	4-1
4.1	LAND USE.....	4-2
4.1.1	Jordan Cove LNG Terminal	4-2
4.1.2	Pacific Connector Pipeline and Associated Facilities	4-12
4.1.3	Land Use for Pacific Connector Components on Federal Lands.....	4-21
4.2	GEOLOGICAL RESOURCES	4-244
4.2.1	Jordan Cove LNG Terminal	4-244
4.2.2	Pacific Connector Pipeline.....	4-258
4.2.3	Environmental Consequences on Federal Lands	4-290
4.3	SOILS AND SEDIMENTS	4-297
4.3.1	Jordan Cove LNG Terminal	4-297
4.3.2	Pacific Connector Pipeline and Associated Facilities	4-309
4.3.3	Soils and Sediments Specific to Consistency with Federal Land Management Plans.....	4-332
4.4	Water Resources and Wetlands.....	4-349
4.4.1	Groundwater.....	4-349
4.4.2	Surface Water	4-361

4.4.3	Wetlands	4-411
4.4.4	Environmental Consequences for Water Resources on Federal Lands	4-423
4.5	Upland Vegetation and Timber	4-435
4.5.1	Vegetation	4-435
4.5.2	Timber	4-489
4.6	WILDLIFE AND AQUATIC RESOURCES	4-499
4.6.1	Terrestrial Wildlife	4-499
4.6.2	Aquatic Resources	4-553
4.7	THREATENED, ENDANGERED, AND OTHER SPECIAL STATUS SPECIES	4-640
4.7.1	Federally Listed Threatened and Endangered Species	4-641
4.7.2	State-Listed Threatened or Endangered Species	4-684
4.7.3	Other Special Status Species	4-692
4.7.4	Environmental Effects on Federal Lands	4-695
4.7.5	Conclusions and Recommendations for Threatened, Endangered, and Other Special Status Species	4-731
4.8	RECREATION AND VISUAL RESOURCES	4-732
4.8.1	Recreation and Public Use Areas	4-732
4.8.2	Visual Resources	4-757
4.9	SOCIOECONOMICS	4-815
4.9.1	Jordan Cove LNG Terminal	4-815
4.9.2	Pacific Connector Pipeline	4-837
4.9.3	Federal Lands	4-862
4.10	TRANSPORTATION	4-865
4.10.1	Jordan Cove LNG Terminal	4-865
4.10.2	Pacific Connector Pipeline Facilities	4-878
4.11	CULTURAL RESOURCES	4-886
4.11.1	Consultations	4-886
4.11.2	Area of Potential Effect	4-899
4.11.3	Results of Overviews, Inventories, and Testing	4-899
4.11.4	Unanticipated Discovery Plans	4-909
4.11.5	Compliance with the NHPA	4-909
4.12	AIR QUALITY AND NOISE	4-911
4.12.1	Air Quality	4-911
4.12.2	Noise and Vibration	4-936
4.13	RELIABILITY AND SAFETY	4-962
4.13.1	Regulatory Agencies	4-962
4.13.2	LNG Facility Hazards	4-963
4.13.3	Technical Review of the Facility Preliminary Engineering Design	4-974
4.13.4	LNG Facility Siting Requirements	4-987
4.13.5	LNG Facility Siting Analysis	4-991
4.13.6	LNG Vessel Hazards	4-1022
4.13.7	Emergency Response	4-1033
4.13.8	Conclusions on Facility Reliability and Safety	4-1036
4.13.9	Pipeline Facilities	4-1037

4.14	CUMULATIVE EFFECTS.....	4-1048
4.14.1	Introduction.....	4-1048
4.14.2	Basis for Assessment.....	4-1048
4.14.3	Cumulative Effects on Resources.....	4-1070
5.0	CONCLUSIONS AND RECOMENDATIONS	5-1
5.1	SUMMARY OF THE STAFF'S ENVIRONMENTAL ANALYSIS.....	5-1
5.1.1	Land Use.....	5-2
5.1.2	Geology.....	5-4
5.1.3	Soils and Sediments.....	5-6
5.1.4	Water Resources and Wetlands	5-7
5.1.5	Vegetation and Timber	5-11
5.1.6	Wildlife and Aquatic Resources	5-12
5.1.7	Threatened, Endangered, and Other Special Status Species	5-14
5.1.8	Recreation and Visual Resources.....	5-16
5.1.9	Socioeconomics	5-18
5.1.10	Transportation	5-20
5.1.11	Cultural Resources	5-21
5.1.12	Air Quality, Greenhouse Gases, and Noise	5-22
5.1.13	Reliability and Safety	5-24
5.1.14	Cumulative Impacts.....	5-25
5.2	FERC STAFF'S RECOMMENDED MITIGATION.....	5-26

APPENDICES

Appendix A	Final EIS Distribution List
Appendix B	Jordan Cove's Letter of Intent and the U.S. Coast Guard's Waterway Suitability Report for the Jordan Cove Energy Project
Appendix C	Pipeline Route and Work Area Maps
Appendix D	Pipeline Facility Tables
Appendix E	BLM District and National Forest Consistency Forms
Appendix F	BLM and Forest Service Compensatory Mitigation Plan and Amendment
Appendix G	Soil Association Descriptions
Appendix H	Late Successional Reserves Crossed by the PCGP Project
Appendix I	Site-Specific Residential Mitigation Plans
Appendix J	Draft Aquatic Conservation Strategy Assessment
Appendix K	Survey and Manage Species Persistence Evaluation
Appendix L	Draft Biological Evaluation for Forest Service Sensitive Species
Appendix M	Management Indicator Species Report
Appendix N	Water Resources and Wetlands Impact Tables

Appendix O	Vegetation and Wildlife Impact Tables
Appendix P	Pacific Connector's Proposed Modifications to FERC's Plan and Procedures
Appendix Q	Blue Ridge Alternative
Appendix R	Federal Lands Review
Appendix S	Jordan Cove's Draft Wildlife Habitat Mitigation Plan
Appendix T	List of Preparers and Reviewers
Appendix U	References
Appendix V	Subject Index
Appendix W	Comments on the Draft EIS and Responses

LIST OF TABLES

Table 1.1.3-1	Major Differences Between the Previous LNG Import Proposal in Docket No. CP07-444-000 and the Current Jordan Cove Export Terminal in Docket No. CP13-483-000	1-8
Table 1.1.3-2	Major Differences Between the Original Pipeline Project Proposed in Docket No. CP07-441-000 and the Current Pacific Connector Project Proposed in Docket No. CP13-492-000.....	1-11
Table 1.4.1-1	Major Permits, Approvals, and Consultations for the JCE & PCGP Project.....	1-24
Table 1.4.2.1-1	BLM and Forest Service Land Management Plan Consistency and Proposed Amendments.....	1-47
Table 1.5-1	Public and Interagency Meetings for the JCE & PCGP Project Attended In-Person by FERC Staff.....	1-61
Table 1.5-2	Topics Raised in Comments on the DEIS.....	1-62
Table 2.1.1.3-1	Piles Supporting the LNG Vessel Berth and Loading Platform	2-9
Table 2.1.1.3-2	Piles Supporting the Tug Boat Berth	2-11
Table 2.1.1.10-1	Support Buildings at the Jordan Cove LNG Terminal and Power Plant Complex.....	2-24
Table 2.1.1.11-1	Materials Excavated and Dredged During Construction of Terminal Marine Facilities	2-27
Table 2.1.2.2-1	Pacific Connector's Proposed Aboveground Facilities	2-33
Table 2.1.2.2-2	Proposed and Existing Gas Control Communication Towers.....	2-36
Table 2.1.3-1	BLM and Forest Service LMP Amendments Associated with the Pacific Connector Pipeline Project.....	2-39
Table 2.1.4-1	Summary of BLM and Forest Service Mitigation Projects by Mitigation Group and Project Type	2-54
Table 2.1.4.3-1	Mitigation Projects to Address LMP Amendments on BLM and NFS Lands	2-68
Table 2.1.7-1	Pacific Connector's POD Attachments	2-75
Table 2.1.8-1	Proposed Mitigation Plans.....	2-76
Table 2.3.1-1	Land Requirements for the Jordan Cove Liquefaction Project	2-84
Table 2.3.2-1	Land Requirements for the Pacific Connector Pipeline Project.....	2-86
Table 2.3.2.3-1	Land Administered by the BLM Affected by the Pacific Connector Pipeline Project	2-92
Table 2.3.2.3-2	Land Administered by the Forest Service Affected by the Pacific Connector Pipeline Project.....	2-92
Table 2.3.2.3-3	Land Administered by Reclamation Affected by the Pacific Connector Pipeline Project.....	2-93
Table 2.4.2.1-1	Subbasins and Fifth-Field Watershed Crossed by the Pacific Connector Pipeline Project.....	2-108
Table 2.4.2.1-2	Permanent Slope Breaker Spacing From Pacific Connector's ECRP ..	2-114
Table 2.5.2-1	Monitoring Requirements Associated with Pacific Connector's Plan of Development.....	2-125

Table 3.2.2.4-1.	Canadian Projects Under Consideration.....	3-11
Table 3.3.2.4-1	SORSC Alternatives Analysis.....	3-20
Table 3.4.2.1-1	Comparison of the Proposed Route with the 2009 FEIS Route and Brunschmid WRP Easement Avoidance Alternative 1	3-35
Table 3.4.2.2-1	Comparison of Pacific Connector’s Proposed Route with the Blue Ridge Alternative.....	3-38
Table 3.4.2.3-1	Comparison of the Proposed Route with Weaver Ridge Alternative Routes.....	3-42
Table 3.4.2.4-1	Comparison of Camas Valley Alternatives with the Corresponding Segment of the Proposed Route	3-45
Table 3.4.2.5-1	Comparison of I-5 Alternative Routes to the Proposed Route.....	3-49
Table 3.4.2.6-1	Comparison of the May 2009 FERC FEIS Route Alternative With the Proposed Route Between MPs 81.2 and 82.5.....	3-51
Table 3.4.2.7-1	Comparison of Alternative Routes Across the Oregon Women’s Land Trust Property.....	3-53
Table 3.4.2.8-1	Comparison of Umpqua National Forest Alternative Routes With the Corresponding Segment of the Proposed Route Between Neuman Gap and Long Prairie – MPs 105 to 111.....	3-58
Table 3.4.2.9-1	Comparison of Access Road Alternatives to Reach the East Side of Rogue River	3-61
Table 3.4.2.10-1	Comparison of Rogue River National Forest Alternative Routes with the Proposed Route from Robinson Butte to Cox Butte – MPs 155 to 169.....	3-64
Table 3.4.2.11-1a	Comparison of the PCT Alternative Route with the Proposed Route	3-68
Table 3.4.2.11-1b	Comparison of the Dead Indian Memorial Highway Alternative Route with the Proposed Route.....	3-69
Table 3.4.2.12-1	Comparison of the Keno Access Road and 2007 Clover Creek Road Alternative Routes With the Proposed Route.....	3-72
Table 3.4.2.13-1	Comparison of the Shasta View Irrigation District Alternative with the Proposed Route	3-75
Table 3.4.4-1	Minor Deviations Incorporated into the Proposed Pipeline Route	3-80
Table 4.1.1.1-1	Types of Land Uses Affected by Construction and Operation of the Jordan Cove Project.....	4-5
Table 4.1.1.3-1	Structures Within Two Miles of the Proposed Jordan Cove LNG Terminal	4-10
Table 4.1.2.1-1	Land Ownership Crossed by the Pacific Connector Pipeline	4-12
Table 4.1.2.2-1	Land Uses Crossed by the Pacific Connector Pipeline Right-of-Way	4-13
Table 4.1.2.2-2	Acres of Land Affected by Construction and Operation of the Pacific Connector Pipeline	4-14
Table 4.1.2.2-3	Acres Affected by Operation of Pacific Connector Proposed Aboveground Facilities	4-16
Table 4.1.2.2-4	County Zones Crossed by the Pacific Connector Pipeline Project.....	4-17
Table 4.1.2.3-1	Residences within 50 Feet of the Construction Right-of-Way or Temporary Extra Work Areas	4-18
Table 4.1.3.1-1	Federal Lands Affected by the Pacific Connector Pipeline Project.....	4-22

Table 4.1.3.1-2	Federal Lands Required for Construction and Operation of the Pacific Connector Pipeline by Land Use Type (acres)	4-23
Table 4.1.3.1-3	Land Management and Land Use Activities That Would be Prohibited or Restricted on the Proposed Pacific Connector Pipeline Construction and Operational Rights-of-Way.....	4-26
Table 4.1.3.2-1	Grazing Allotments on National Forest System Lands Crossed by the Pacific Connector Pipeline Project.....	4-28
Table 4.1.3.2-2	Grazing Allotments on BLM Lands Crossed by the Pacific Connector Pipeline Project	4-29
Table 4.1.3.3-1	O&C Lands, Coos Bay Wagon Road Lands, and Reserved Public Domain Lands Crossed by the Pacific Connector Pipeline (miles).....	4-31
Table 4.1.3.3-2	NWFP Land Allocations Crossed by the Pacific Connector Pipeline Project (miles)	4-33
Table 4.1.3.5-1a	Summary of Riparian Reserves, Stream Channels, and Wetlands Crossed by the Pacific Connector Pipeline Project on BLM and NFS Lands by Administrative Unit	4-70
Table 4.1.3.5-1b	Vegetation Age Class Structure of Riparian Reserves Cleared in Construction Corridor and TEWAs by Administrative Unit, BLM and Forest Service	4-71
Table 4.1.3.5-2a	BLM and Forest Service Land Allocations in Watersheds Crossed by the Pacific Connector Pipeline Project	4-80
Table 4.1.3.5-2b	Miles of Pacific Connector Pipeline Project Right-of-Way in Key Watersheds by Administrative Unit.....	4-85
Table 4.1.3.5-3	Compliance of the Pacific Connector Pipeline Project with ACS Objectives, Coos Bay Frontal Watershed	4-91
Table 4.1.3.5-4	Compliance of the Pacific Connector Pipeline Project with ACS Objectives, Coquille River Watershed	4-93
Table 4.1.3.5-5	Compliance of the Pacific Connector Pipeline Project with ACS Objectives, North Fork Coquille River Watershed.....	4-94
Table 4.1.3.5-6	Proposed Off-site Mitigation Projects for North Fork Coquille River Watershed.....	4-97
Table 4.1.3.5-7	Compliance of Pacific Connector Pipeline Project with ACS.....	4-98
Table 4.1.3.5-8	Proposed Off-site Mitigation Measures in the East Fork Coquille River Watershed	4-100
Table 4.1.3.5-9	Compliance of the Pacific Connector Pipeline Project with ACS Objectives, Middle Fork Coquille River Watershed	4-102
Table 4.1.3.5-10	Proposed Off-site Mitigation Measures in the Middle Fork Coquille River Watershed	4-104
Table 4.1.3.5-11	Compliance of the Pacific Connector Pipeline Project with ACS Objectives, Olalla Creek–Lookingglass Creek Watershed	4-106
Table 4.1.3.5-12	Proposed Off-site Mitigation Projects for the Olalla-Lookingglass Watershed.....	4-107
Table 4.1.3.5-13	Compliance of the Pacific Connector Pipeline Project with ACS Objectives, Clark Branch-South Umpqua River Watershed	4-108
Table 4.1.3.5-14	Proposed Off-site Mitigation Projects for Clark Branch-South Umpqua Watershed	4-109

Table 4.1.3.5-15	Compliance of the Pacific Connector Pipeline Project with ACS Objectives, Myrtle Creek Watershed	4-110
Table 4.1.3.5-16	Proposed Off-site Mitigation Projects for Myrtle Creek Watershed	4-111
Table 4.1.3.5-17	Compliance of the Pacific Connector Pipeline Project with ACS Objectives, Days Creek–South Umpqua River Watershed	4-112
Table 4.1.3.5-18	Proposed Off-site Mitigation Projects for Days Creek–South Umpqua Watershed	4-115
Table 4.1.3.5-19	Compliance of the Pacific Connector Pipeline Project with ACS Objectives, Elk Creek–South Umpqua Watershed.....	4-118
Table 4.1.3.5-20	Proposed Off-site Mitigation Projects for Elk Creek–South Umpqua Watershed.....	4-120
Table 4.1.3.5-21	Compliance of the Pacific Connector Pipeline Project with ACS Objectives, Upper Cow Creek Watershed	4-121
Table 4.1.3.5-22	Off-site Mitigations in the Upper Cow Creek Watershed	4-125
Table 4.1.3.5-23	Compliance of the Pacific Connector Pipeline Project with ACS Objectives, Trail Creek Watershed	4-127
Table 4.1.3.5-24	Off-site Mitigations on BLM and NFS Lands in the Trail Creek Watershed.....	4-130
Table 4.1.3.5-25	Compliance of the Pacific Connector Pipeline Project with ACS Objectives, Shady Cove–Rogue River Watershed.....	4-132
Table 4.1.3.5-26	Proposed Off-site Mitigations on BLM Lands in the Shady Cove–Rogue River Watershed	4-135
Table 4.1.3.5-27	Compliance of the Pacific Connector Pipeline Project with ACS Objectives, Big Butte Creek Watershed.....	4-136
Table 4.1.3.5-28	Proposed Off-site Mitigations on BLM Lands in the Big Butte Creek Watershed.....	4-138
Table 4.1.3.5-29	Compliance of the Pacific Connector Pipeline Project with ACS Objectives, Little Butte Creek	4-140
Table 4.1.3.5-30	Proposed Mitigation Measures on BLM and NFS Lands in the Little Butte Creek Watershed	4-144
Table 4.1.3.5-31	Compliance of the Pacific Connector Pipeline Project with ACS Objectives, Spencer Creek Watershed.....	4-148
Table 4.1.3.5-32	Proposed Off-Site Mitigation Projects on BLM and NFS Lands in the Spencer Creek Watershed	4-151
Table 4.1.3.6-1	Summary of Total LSR Acres Directly and Indirectly Affected by the Pacific Connector Pipeline.....	4-161
Table 4.1.3.6-2	Comparison of Total LSR Acres Cleared by the Pacific Connector Pipeline and the Acres of Matrix Reallocated to LSR	4-165
Table 4.1.3.6-3	Known Occupied MAMU Stands within the Pacific Connector Pipeline Project Area in the Coos Bay District	4-166
Table 4.1.3.6-4	Comparison of Total Pacific Connector Pipeline Project Impacts on MAMU Stands and Matrix Reallocated to LSR (acres) in Coos Bay District.....	4-168
Table 4.1.3.6-5	Comparison of Total Pacific Connector Pipeline Project LSR Impacts and Acres of Matrix Reallocated to LSR, Within BLM Coos Bay District LSR 261	4-171

Table 4.1.3.6-6	Comparison of the Pacific Connector Pipeline Project Total Impacts on LSRs and Matrix Reallocated to LSR (acres), Within BLM Coos Bay District.....	4-173
Table 4.1.3.6-7	Known Occupied Marbled Murrelet Stands in the Roseburg District within the Pacific Connector Pipeline Project Area	4-176
Table 4.1.3.6-8	Comparison of Total Acres of Occupied Marbled Stands Impacted by the Pacific Connector Pipeline and Acres of Matrix to LSR Reallocation	4-178
Table 4.1.3.6-9	Summary of Total KOAC Acres Affected by the Pacific Connector Pipeline Project in the BLM Roseburg District	4-183
Table 4.1.3.6-10	Comparison of the Total LSR Acres Affected by the Pacific Connector Pipeline Project and Matrix Reallocated to LSR, Roseburg District LSR 261	4-186
Table 4.1.3.6-11	Summary of Total LSR 223 Acres Affected by the Pacific Connector Pipeline Project in the BLM Roseburg District and Acres of Matrix Reallocated to LSR	4-189
Table 4.1.3.6-12	Comparison of Total LSR Acres Affected by the Pacific Connector Pipeline Project and Acres of Matrix Reallocated to LSR, BLM Roseburg District.....	4-190
Table 4.1.3.6-13	Comparison of LSR 223 Acres Affected by the Pacific Connector Pipeline Project and Acres of Matrix Reallocated to LSR, Umpqua National Forest.....	4-195
Table 4.1.3.6-14	Stand-Density Management Activities in LSR 223 and Matrix	4-199
Table 4.1.3.6-15	Comparison of Total Pacific Connector Pipeline Project Impacts on LSR 223 and Estimated Edge Reduction Effect of Proposed Off-site Mitigation Actions (Acres).....	4-202
Table 4.1.3.6-16	Comparison of Total LSR Acres Affected by the Pacific Connector Pipeline Project and Acres of Matrix Reallocated to LSR, Rogue River National Forest LSR 227	4-205
Table 4.1.3.6-17	Reductions in Road Density Within 0.25, 0.5, and 1 mile of the Pacific Connector Pipeline Corridor.....	4-210
Table 4.1.3.7-1	Summary of Proposed Site-Specific Amendments of BLM and Forest Service LMPs for the Pacific Connector Pipeline Project.....	4-214
Table 4.1.3.7-2	Summary of Proposed Land Allocation Amendments of BLM and Forest Service LMPs for the Pacific Connector Pipeline Project.....	4-215
Table 4.1.3.7-3	Summary of Proposed Amendments to the Coos Bay District LMP	4-216
Table 4.1.3.7-4	Summary of Proposed Amendments to the Roseburg District LMP.....	4-217
Table 4.1.3.7-5	Summary of Proposed Amendments to the Umpqua National Forest LRMP	4-218
Table 4.1.3.7-6	Summary of Proposed Amendments for the Rogue River National Forest LRMP	4-219
Table 4.1.3.7-7	Summary of Proposed Amendments to the Winema National Forest LRMP	4-220
Table 4.1.3.7-8	Comparison of Total LSR 261 Acres Affected by the Pacific Connector Pipeline Project and Acres of Matrix Reallocated to LSR	4-221

Table 4.1.3.7-9	Comparison of Total LSR 223 Acres Affected by the Pacific Connector Pipeline Project and Acres of Matrix Reallocated to LSR	4-224
Table 4.1.3.7-10	Summary of Proposed BLM and Forest Service LMP Amendments for LSR.....	4-227
Table 4.1.3.7-11	Summary of the Total LSR Acres Affected Directly and Indirectly by the Pacific Connector Pipeline Project and Total Acres of Matrix Reallocated to LSR	4-227
Table 4.1.3.7-12	Comparison of Total LSR Acres by Habitat Type Affected by the Pacific Connector Pipeline Project and Total Acres of Matrix Reallocated to LSR	4-229
Table 4.1.3.7-13	Summary of Proposed Off-site Mitigation Actions for LSR Impacts on BLM and NFS Lands	4-230
Table 4.1.3.7-14	Comparison of Total Pacific Connector Pipeline Project Impacts on LSRs 223 and 227 and Estimated Edge Reduction Effect of Proposed Off-site Mitigation Actions on Forest Service Lands (Acres)	4-231
Table 4.1.3.7-15	Comparison of Total Pacific Connector Pipeline Project Effects on LSOG Habitat in LSRs and LSOG Habitat in Matrix Reallocated to LSR by Province (Acres).....	4-235
Table 4.1.3.7-16	Summary of Proposed Off-site Mitigation Actions for LSR Impacts on BLM and Forest Service Lands by Province	4-236
Table 4.1.3.7-17	Comparison of Total LSOG Habitat Acres in Occupied Marbled Murrelet Stands Impacted by the Pacific Connector Gas Pipeline Project and Acres of LSOG Habitat in the Matrix to LSR Reallocation by Province	4-239
Table 4.1.3.7-18	Summary of Miles of Riparian Reserves Impacted by the Pacific Connector Pipeline Project and Proposed Off-site Mitigation Actions in Riparian Reserves on BLM and Forest Service Lands.....	4-241
Table 4.1.3.8-1	Connectivity/Diversity Blocks Crossed by the Pacific Connector Pipeline Project, Coos Bay and Roseburg Districts, BLM	4-243
Table 4.2.1.4-1	Summary of Geotechnical Investigations for the Jordan Cove Project.....	4-253
Table 4.2.1.4-2	Cut/Fill Quantities	4-255
Table 4.2.2.2-1	Historical Earthquakes within 100 Miles of the Proposed Pacific Connector Pipeline	4-262
Table 4.2.2.2-2	Summary of Potential Liquefaction and Lateral Spreading Hazards	4-266
Table 4.2.2.2-3	Summary of Scour Results using HEC-RAS.....	4-276
Table 4.2.2.4-1	Rock Source and/or Permanent Disposal Sites	4-283
Table 4.2.2.5-1	Summary of Blasting Potential Along the Proposed Pacific Connector Pipeline	4-286
Table 4.3.1.2-1	Acres of Impacts at the Jordan Cove LNG Terminal, by Soil Type	4-297
Table 4.3.2-1	Soil Associations Crossed by the Pacific Connector Pipeline	4-310
Table 4.3.2-2	Acreages and Soil Characteristics Crossed by the Pacific Connector Pipeline	4-313
Table 4.3.2-3	Summary of Soils Limitations – Pacific Connector Pipeline Aboveground Facilities	4-315

Table 4.3.2.1-1	Areas Where Topsoil Would be Salvaged Along the Pacific Connector Pipeline	4-317
Table 4.3.2.3-1	Contractor and Pipe Storage Yards with Sensitive Soil Characteristics (Pastures, Fields and Vacant Lots)	4-328
Table 4.3.2.3-2	Identified Cleanup Sites Along the Pacific Connector Pipeline	4-330
Table 4.3.3.1-1	Location Risk-Sensitivity Matrix between Risk Class and Sensitivity to Disturbance, where Values range from 1 (very low), 2 (low), 3 (moderate), 4 (high), and 5 (very high)	4-333
Table 4.3.3.1-2	Summary of Risk and Sensitivity Ratings by Construction Feature (acres).....	4-333
Table 4.3.3.1-3	Risk/Sensitivity Ratings by Administrative Unit and Watershed (Acres)	4-333
Table 4.3.3.2-1	Mitigation Projects to Address LMP Amendments on BLM and NFS Lands	4-341
Table 4.3.3.3-1	Thresholds for Detrimental Soil Conditions on NFS Lands	4-342
Table 4.3.3.4-1	Risk/Sensitivity Ratings by Administrative Unit by Watershed (Acres)	4-346
Table 4.4.1.1-1	Water Usage from CBNBWB Sources for Jordan Cove Facilities	4-350
Table 4.4.1.2-1	Wellhead Protection Areas Crossed by the Pacific Connector Pipeline	4-354
Table 4.4.1.2-2	Private Wells in Klamath County Within 150 Feet of the Pacific Connector Construction Work Area	4-355
Table 4.4.2.1-1	Wastewater Generated from Construction Areas and Operational Facilities	4-366
Table 4.4.2.2-1	Subbasins and Fifth-Field Watershed Crossed by Proposed Pacific Connector Pipeline	4-374
Table 4.4.2.2-2	Designated Beneficial Uses for Basins Crossed by the Proposed Pacific Connector Pipeline.....	4-375
Table 4.4.2.2-3	ODEQ Water Quality Limited Streams Crossed by the Pacific Connector Pipeline	4-377
Table 4.4.2.2-4	Surface Water Public DWSAs Crossed by the Proposed Pacific Connector Pipeline	4-381
Table 4.4.2.2-5	Public Surface Water Drinking Water Intakes within 3 Miles Downstream of Proposed Waterbody Crossings for the Pacific Connector Pipeline	4-382
Table 4.4.2.2-6	Points of Diversion within 150 feet of Pacific Connector Construction Work Area	4-383
Table 4.4.2.2-7	Floodplain Areas Crossed by the Proposed Pacific Connector Pipeline	4-386
Table 4.4.2.2-8	Streams Crossed by the Pacific Connector Pipeline Route That Have a High Potential For Scour or Migration.....	4-400
Table 4.4.2.2-9	Potential Dust Control Water Sources for the Pacific Connector Pipeline	4-401
Table 4.4.2.2-10	Potential Hydrostatic Source Locations	4-402

Table 4.4.2.2-11	Predicted Temperature Modeling at Selected Stream Crossings Along the Pacific Connector Pipeline Route	4-406
Table 4.4.2.2-12	New Temporary and Permanent Access Roads Located within 100 feet of Waterbodies	4-410
Table 4.4.3.1-1	Wetlands Delineated on the LNG Project Site	4-415
Table 4.4.3.2-1	Summary of Wetland Impacts along the Pacific Connector Pipeline	4-420
Table 4.4.4.2-1	Fifth-Field Watersheds Crossed by the Pacific Connector Pipeline on Federal Lands	4-425
Table 4.4.4.2-2	Key Watersheds Crossed by the Proposed Pacific Connector Pipeline	4-427
Table 4.5.1.1-1	Impact on Vegetation Type from the Proposed Jordan Cove Facilities	4-442
Table 4.5.1.1-2	Potential for Species on the Coos County Noxious Weed List 2011-2012 to Occur at the Jordan Cove Project Site	4-444
Table 4.5.1.2-1	Vegetation Cover Types Crossed by the Pacific Connector Pipeline Project	4-456
Table 4.5.1.2-2	Summary of Construction-Related Disturbance to Vegetation by the Pacific Connector Pipeline Project (acres)	4-457
Table 4.5.1.2-3	Summary of Operation-Related Disturbance to Vegetation by the Pacific Connector Pipeline Project	4-460
Table 4.5.1.2-4	Oregon Target Weeds (Class T) Suspected within or Near the Proposed Pacific Connector Pipeline Work Area	4-468
Table 4.5.1.2-5	Summary of Noxious Weeds found Along the Pacific Connector Pipeline Route during Surveys	4-469
Table 4.5.1.2-6	Summary of Known Infestations of Insect Parasites and Tree Diseases Along the Pacific Connector Pipeline Route	4-475
Table 4.5.1.2-7	Existing Patch Characteristics of Different Coniferous and Mixed Forest Seral Age Classes Crossed by the Pipeline	4-477
Table 4.5.1.2-8	Direct and Indirect Effects to Interior Forests from Construction of the Pacific Connector Pipeline Project	4-479
Table 4.5.1.2-9	Historic Average Fire Frequency and Extent of Acreage Burned in Watersheds Crossed by the Proposed Pacific Connector Pipeline	4-482
Table 4.5.2.2-1	Merchantable Timber to be Cleared for the Proposed Pacific Connector Pipeline, by Class and Age	4-490
Table 4.5.2.3-1	Forest Stand Type and Net Volume (MBF) on BLM and NFS Lands	4-496
Table 4.6.1.1-1	Acres of ODFW Habitat Affected by the Construction and Operation of the Project	4-500
Table 4.6.1.1-2	Proposed Mitigation Parcels, Vegetation Types, and Acres of Habitat Categories To Be Preserved	4-506
Table 4.6.1.1-3	Birds of Conservation Concern in the Project Area, Timing of Potential Occurrence, and Expected Habitat	4-507
Table 4.6.1.2-1	Wildlife Habitat Types Crossed by the Pacific Connector Pipeline and Wildlife Species Associated with Habitats	4-516
Table 4.6.1.2-2	Summary of Construction-Related Disturbance (acres) to Corresponding Habitat Type	4-519

Table 4.6.1.2-3	Summary of Operation-Related Disturbance to Habitat by the Proposed Pacific Connector Pipeline (acres).....	4-521
Table 4.6.1.2-4	Summary of ODFW Habitat Categories and Impact (Acres) from the Pacific Connector Pipeline Project within Non-Federal and Federal Lands	4-523
Table 4.6.1.2-5	Non-Special Status Bat Species and Associated Habitats Likely to Occur Within the Project Area	4-525
Table 4.6.1.2-6	Birds of Conservation Concern in BCR-5 and BCR-9 that Have Been Observed on BBS Routes within 50 Miles of the Pacific Connector Pipeline Project with Regional and Local Population Trends, and Breeding Dates, if Known	4-527
Table 4.6.1.2-7	Numbers of Migratory Birds Potentially Nesting within Habitats Affected along the Pipeline Centerline in BCR 5 and BCR 9	4-530
Table 4.6.1.2-8	FWS Recommended Spatial Buffers Surrounding Raptor Nests of Species that May Occur in the Vicinity of the Pacific Connector Pipeline	4-532
Table 4.6.1.2-9	Designated Big Game Winter Range Crossed by the Pacific Connector Pipeline	4-535
Table 4.6.1.2-10	Acres of Habitat Types Affected within Big Game Winter Ranges by Construction and Operation of the Pacific Connector Pipeline by Landowner	4-537
Table 4.6.1.2-11	Common Sound Levels for Equipment/Activities Potentially Associated with the Pacific Connector Pipeline	4-545
Table 4.6.1.3-1	Acres of Construction-Related Disturbance to Wildlife Habitat Types by the Pacific Connector Pipeline on Federal Land, and Wildlife Species Associated with Johnson and O’Neal (2001) Habitats.....	4-550
Table 4.6.1.3-2	Snag Density Estimates on NFS Lands.....	4-553
Table 4.6.2.1-1	Potential Impacts to EFH due to LNG Vessel Traffic Along the Transit Route.....	4-570
Table 4.6.2.2-1	Taxa Groups Collected in Coos Bay Near the Proposed Jordan Cove Terminal During 2009–2011.....	4-571
Table 4.6.2.2-2	Estuarine Habitat Affected from Construction of Jordan Cove LNG Facilities	4-573
Table 4.6.2.2-3	Comparison of Relative Loss of Larval Invertebrates and Larval Fish from Entrainment to Natural Mortality During Cooling Water Intake for One LNG Vessel Docked at the Jordan Cove Terminal.....	4-585
Table 4.6.2.2-4	Selected Survival Values by Life Stage of Marine Species That May Be Entrained or Impinged.....	4-586
Table 4.6.2.2-5	Potential Impacts to EFH due to LNG Terminal Construction and Operations	4-591
Table 4.6.2.3-1	Status Rating of Fish Populations by Major Subbasins Areas Crossed by the Proposed Pipeline	4-597
Table 4.6.2.3-2	Pacific Connector Pipeline Approximate Associated Construction Disturbance and Aboveground Facilities and Their Potential Effects to Aquatic Resources	4-600

Table 4.6.2.3-3	Areas of Subtidal and Intertidal Habitats within the Coos Bay Estuary Directly Affected by Construction of the Pacific Connector Pipeline	4-601
Table 4.6.2.3-4	Number of Streams and Ponds (excluding Haynes Inlet) Crossed or Adjacent to the Pacific Connector Pipeline, by Fish Status Category and Fifth-Field Watershed	4-606
Table 4.6.2.3-5	Proposed Waterbody Crossing Methods for All Waterbody Crossings (excluding Haynes Inlet), by Subbasins and Fifth-Field Watersheds	4-608
Table 4.6.2.3-6	Total Riparian Area (acres within one site-potential tree height distance) Disturbed by Construction Activities Adjacent to Perennial and Intermittent Waterbodies Crossed/Near by the Pacific Connector Pipeline	4-624
Table 4.6.2.3-7	Potential Impacts to EFH due to Pipeline Construction and Operation	4-635
Table 4.6.2.4-1	Number of Streams Crossed by the Pacific Connector Pipeline Route on Federal Lands by Fish Status Category within Each Fifth-Field Watershed Coinciding with the Pacific Connector Project.....	4-637
Table 4.7.1-1	Federally Listed and Proposed Species Potentially Occurring in the Proposed Project Area	4-642
Table 4.7.2-1	State-Listed Species Potentially Occurring in the Proposed Project Area	4-684
Table 4.7.4.1-1	Numbers of BLM and Forest Service Sensitive Species within the Four BLM Districts and Three National Forests Crossed by the Proposed Pacific Connector Pipeline	4-696
Table 4.7.4.1-2	BLM and Forest Service Sensitive Species with the Potential to be Affected by the Project	4-697
Table 4.7.4.3-1	Regional Site Count of Fungi Species Potentially Affected by the Project.....	4-707
Table 4.7.4.3-2	Fungi Sites Potentially Affected by the Project	4-710
Table 4.7.4.3-3	Affected Fungi Sites by BLM District and National Forest.....	4-716
Table 4.7.4.3-4	Regional Site Count of Lichen Species Potentially Affected by the Project.....	4-718
Table 4.7.4.3-5	Lichen Sites Potentially Affected by the Project.....	4-720
Table 4.7.4.3-6	Affected Lichen Sites by BLM District and National Forest	4-721
Table 4.7.4.3-7	Regional Site Count of Plant Species Potentially Affected by the Project.....	4-724
Table 4.7.4.3-8	Vascular Plant Sites Potentially Affected by Project	4-725
Table 4.7.4.3-9	Affected Vascular Plant Sites by BLM District and National Forest.....	4-726
Table 4.7.4.3-10	Regional Site Count of Mollusk Species Potentially Affected by the Project.....	4-727
Table 4.7.4.3-11	Mollusk Sites Potentially Affected by the Project	4-727
Table 4.7.4.3-12	Affected Mollusk Sites by BLM District and National Forest.....	4-728
Table 4.7.4.3-13	Regional Site Count of Vertebrate Species Potentially Affected by the Project.....	4-729

Table 4.7.4.3-14	Vertebrate Sites Potentially Affected by the Project.....	4-730
Table 4.7.4.3-15	Affected Vertebrate Sites by BLM District and National Forest	4-731
Table 4.8.2.3-1	Crosswalk Between Visual Quality Objectives, Scenic Integrity Objectives, and Scenic Integrity Levels	4-808
Table 4.8.2.3-2	BLM Visual Resource Management Classes.....	4-809
Table 4.8.2.3-3	Sensitive Viewsheds on Federal Lands and Proposed Mitigation Measures	4-810
Table 4.9.1.1-1	Population by State, County, and Community	4-815
Table 4.9.1.1-2	Shifts Operating the Jordan Cove LNG Terminal and South Dune Power Plant.....	4-817
Table 4.9.1.2-1	Jordan Cove Project Area Housing Units, 2010.....	4-818
Table 4.9.1.4-1	Existing Economic Conditions for the Region	4-821
Table 4.9.1.4-2	Regional Economic Impacts of Construction of the Jordan Cove and Pacific Connector Projects in Oregon and Washington	4-823
Table 4.9.1.9-1	Race and Ethnicity in Coos County, Oregon, 2010.....	4-834
Table 4.9.1.9-2	Vulnerable Populations in Coos County, Oregon.....	4-834
Table 4.9.2.1-1	Population by State and County	4-837
Table 4.9.2.2-1	Housing Units in the Pacific Connector Pipeline Project Area, 2010	4-838
Table 4.9.2.2-2	Pacific Connector Pipeline Project Area Rental Housing, Motel Rooms, and RV Hookups	4-840
Table 4.9.2.4-1	Employment and Labor Statistics for the Pacific Connector Pipeline Project Area	4-843
Table 4.9.2.4-2	Pacific Connector Pipeline Project Area Employment by Economic Sector, 2011.....	4-844
Table 4.9.2.4-3	Components of Per Capita Income for the Pacific Connector Pipeline Project Area, 2011	4-845
Table 4.9.2.4-4	Economic Impacts of Pacific Connector Pipeline Construction	4-846
Table 4.9.2.5-1	2011 Tax Revenues for the Counties Crossed by the Pacific Connector Pipeline	4-847
Table 4.9.2.5-2	Estimated Tax Revenues from Construction of the Pacific Connector Pipeline	4-847
Table 4.9.2.5-3	Estimated Annual Tax Revenues from Operation of the Pacific Connector Pipeline	4-848
Table 4.9.2.5-4	Estimated Annual Property Tax Revenues in the Counties Crossed by the Pacific Connector Pipeline	4-848
Table 4.9.2.6-1	Law Enforcement and Fire Protection Resources in the Counties Crossed by the Pacific Connector Pipeline	4-849
Table 4.9.2.6-2	Hospitals in the Counties Crossed by the Pacific Connector Pipeline ...	4-850
Table 4.9.2.6-3	Number of School Districts and Student Enrollment in the Counties Crossed by the Pacific Connector Pipeline 2011-2012 School Year	4-851
Table 4.9.2.6-4	Utilities Crossed by the Pipeline by County	4-852
Table 4.9.2.7-1	Travel Spending, Earnings, and Employment, 2012.....	4-856
Table 4.9.2.9-1	Race and Ethnicity in Counties Crossed by the Pacific Connector Pipeline, 2010	4-859

Table 4.9.2.9-2	Low Income and Vulnerable Populations in the Counties Crossed by the Pacific Connector Pipeline.....	4-860
Table 4.9.3.1-1	Financial Efficiency Analysis of the Pacific Connector Pipeline Project.....	4-863
Table 4.10.1.2-1	Peak Hour Traffic Volumes at Four Key Intersections Near the Jordan Cove Project Site.....	4-870
Table 4.10.2.1-1	Proposed New Temporary and Permanent Construction Access Roads.....	4-879
Table 4.10.2.6-1	Total Miles of Existing Roads Proposed for Use Within Federal Lands	4-883
Table 4.11.1.1-1	Jordan Cove’s Communications to and from the SHPO Since 2009....	4-888
Table 4.11.1.1-2	Pacific Connector’s Communications to and from the SHPO Since 2009	4-888
Table 4.11.1.2-1	Indian Tribes and Native American Organizations Contacted by the FERC for Dockets No. CP13-483-000 and CP13-492-000	4-891
Table 4.11.1.2-2	Communications Between the Applicants and Indian Tribes Since 2009 Regarding Docket Nos. CP13-483-000 and CP-492-000.....	4-894
Table 4.11.1.3-1	Public and Non-Governmental Organization Scoping Comments on Cultural Resources Issues.....	4-898
Table 4.11.1.3-2	Communications Between Pacific Connector and Federal Land Managing Agencies Since 2009	4-899
Table 4.11.3.1-1	Cultural Resources Surveys of Jordan Cove’s Proposed Facilities.....	4-902
Table 4.11.3.2-1	Previously Recorded Sites Within the Pacific Connector Pipeline Project APE.....	4-903
Table 4.11.3.2-2	NRHP-Eligible and Unevaluated Sites On Non-Federal Lands That May Be Affected by the Pacific Connector Pipeline Project and Require Additional Investigations	4-906
Table 4.11.3.3-1	Archaeological Sites On Federal Lands Within The Pacific Connector Pipeline Project APE	4-907
Table 4.12.1.1-1	Criteria Pollutants, National Ambient Air Quality Standards and Existing Air Quality Near Terminal.....	4-913
Table 4.12.1.1-2	PSD Baseline Dates and Increments for Criteria Pollutants.....	4-915
Table 4.12.1.1-3	Criteria Pollutant Emissions from Pile Driving and Concrete Batch Plant (tons).....	4-919
Table 4.12.1.1-4	Criteria Pollutant Emissions from Other Terminal Construction Activities, By Year (tons)	4-919
Table 4.12.1.1-5	Criteria Pollutant Emissions During Operation of the LNG Terminal (tons per year).....	4-921
Table 4.12.1.1-6	Maximum Combined Impacts of Terminal, Power Plant, Marine Vessels, and Nearby Major Sources	4-922
Table 4.12.1.2-1	Existing Air Quality Near Proposed Compressor Station	4-923
Table 4.12.1.2-2	Criteria Pollutant Emissions from Compressor Station and Pipeline Construction (tons).....	4-927
Table 4.12.1.2-3	Criteria Pollutant Emissions from Operation of Compressor Station and Pipeline (tons per year)	4-928

Table 4.12.1.2-4	Screening-Level CO and NO ₂ Impacts from Compressor Station Turbines	4-928
Table 4.12.1.3-1	Maximum Impacts of Terminal and Power Plant at a Distance of 50 km	4-929
Table 4.12.1.4-1	Emissions of Greenhouse Gases from Construction	4-934
Table 4.12.1.4-2	Emissions of Greenhouse Gases from Operation.....	4-934
Table 4.12.2.2-1	Oregon Noise Limits For Industrial and Commercial Noise Sources....	4-937
Table 4.12.2.2-2	Octave Band Noise Limits For Industrial and Commercial Noise Sources.....	4-938
Table 4.12.2.4-1	Ambient Noise Levels for the Jordan Cove LNG Terminal Measured at Nearby NSAs	4-939
Table 4.12.2.4-2	Construction Equipment Noise Emission Levels for Pile Installation and Dredging.....	4-944
Table 4.12.2.4-3	Predicted Construction Noise Impacts of Jordan Cove LNG Terminal	4-944
Table 4.12.2.4-4	Predicted Project Noise Emissions at NSAs compared to Regulatory Limit for Jordan Cove LNG Terminal	4-946
Table 4.12.2.4-5	Summary of Typical Non-HDD Pipeline Construction Noise Levels (L _{eq}).....	4-949
Table 4.12.2.4-6	Summary of L _{dn} Levels, HDD Drilling from North Side of the Coos River	4-951
Table 4.12.2.4-7	Summary of L _{dn} Levels, HDD Drilling from West Side of the Rogue River	4-953
Table 4.12.2.4-8	Summary of L _{dn} Levels, HDD Drilling from East Side of the Rogue River	4-953
Table 4.12.2.4-9	Summary of L _{dn} Levels, HDD Drilling from West Side of the Klamath River	4-954
Table 4.12.2.4-10	Summary of L _{dn} Levels, HDD Drilling from East Side of the Klamath River	4-954
Table 4.12.2.4-11	Summary of L _{dn} Levels, DP Drilling from East side of the South Umpqua River	4-955
Table 4.12.2.4-12	Predicted Operational Noise Impacts of the Klamath Compressor Station.....	4-957
Table 4.13.2.1-1	Toxicity Levels (in ppm) ,	4-967
Table 4.13.2.1-2	Flammable Properties	4-968
Table 4.13.5.1-1	Impoundment Area Sizing	4-992
Table 4.13.5.3-1	LNG Design Spills	4-996
Table 4.13.5.3-2	Other Hazardous Fluid Design Spills.....	4-1007
Table 4.13.5.4-1	Distance (in feet) to the ½-AEGL 1.....	4-1018
Table 4.13.5.5-1	Thermal Radiation Exclusion Zone for Impoundment Basins.....	4-1020
Table 4.13.9.1-1	DOT Class Locations for the Proposed Pacific Connector Pipeline	4-1038
Table 4.13.9.1-2	DOT Class 3 Locations and High Consequence Areas Crossed by and Adjacent to the Proposed Pacific Connector Pipeline	4-1040

Table 4.13.9.2-1	Natural Gas Transmission Pipeline Serious Incidents by Cause (1994–2013)	4-1044
Table 4.13.9.2-2	Outside Forces Incidents by Cause (1994-2013)	4-1045
Table 4.13.9.3-1	Injuries and Fatalities – Natural Gas Transmission Pipelines	4-1046
Table 4.13.9.3-2	Accidental Deaths by Cause	4-1047
Table 4.14.2.3-1	Recent, Current, or Proposed Actions That May Cumulatively Affect Resources	4-1054
Table 4.14.3-1	Cumulative Acres Impacted by Watershed by the Project, Related Mitigation Projects, and Other Projects	4-1070

LIST OF FIGURES

Figure 1.1-1.	General Location of Proposed Facilities	1-7
Figure 2.1-1.	Project Location Map.....	2-2
Figure 2.1-2.	LNG Terminal Facilities	2-3
Figure 2.1-3.	Proposed LNG Vessel Transit Route.....	2-5
Figure 2.1-4.	Coos Bay Navigation Channel and Other Features in the Vicinity of the Proposed LNG Terminal.....	2-6
Figure 2.1-5.	Plot Plan of the Marine Facilities	2-7
Figure 2.1-6.	Plot Plan of Marine Berth.....	2-10
Figure 2.1-7.	Conceptual Design of the LNG Storage Tanks	2-14
Figure 2.1-8.	Cross Section Drawing of Access Road and Utility Corridor	2-16
Figure 2.1-9.	Truck Haul/Hydraulic Transport Pipeline Route	2-17
Figure 2.1-10.	Pipeline Removal and Abandonment	2-22
Figure 2.1-11.	Industrial Wastewater Water Line Locations and Water Pipeline Locations.....	2-23
Figure 2.1-12.	Location of Coos Bay Entrance Site F Dredged Material Disposal	2-29
Figure 2.1-13.	General Location Map of Proposed and Existing Gas Control Communication Towers.....	2-37
Figure 2.2-1.	Non-jurisdictional Facilities Associated with Klamath Compressor Station T.41S., R.12W., Section 11	2-80
Figure 2.2-2.	Non-jurisdictional Facilities Associated with Clarks Branch Meter Station T.29S., R.6W., Section 2	2-81
Figure 2.2-3.	Non-jurisdictional Facilities Associated with Jordan Cove Meter Station T.25S., R.13W., Section 3.....	2-82
Figure 2.3-1.	Typical Pipeline Right-of-Way Cross Section.....	2-87
Figure 2.4-1.	Site Plan – North Point Workforce Housing Complex	2-96
Figure 2.4-2.	Typical Pipeline Construction Sequence	2-107
Figure 3.3-1.	Potential LNG Terminal Sites in the Coos Bay Area	3-14
Figure 3.3-2.	Potential SORSC Site Locations	3-19
Figure 3.3-3a.	Workers Camp Alternatives Site Locations.....	3-22
Figure 3.3-3b.	Workers Camp Alternatives Site Locations.....	3-23
Figure 3.3-3c.	Workers Camp Alternatives Site Locations.....	3-24
Figure 3.4-1.	Straight-line and All-Highway Alternative Segments	3-30
Figure 3.4-2.	Brunschmid Wetland Reserve Program Easement Route Alternatives	3-34
Figure 3.4-3.	Blue Ridge Route Variations	3-36
Figure 3.4-4.	Weaver Ridge Route Alternatives.....	3-41
Figure 3.4-5.	Camas Valley Route Alternatives	3-44
Figure 3.4-6.	I-5 and South Umpqua River Crossing Route Alternatives	3-48
Figure 3.4-7.	NSO Patch Route Alternatives	3-52
Figure 3.4-8.	Oregon Women’s Land Trust Route Alternatives.....	3-55

Figure 3.4-9.	Neuman Gap to Long Prairie Route Alternatives	3-57
Figure 3.4-10.	East Side of the Rogue River Access Route Alternatives	3-60
Figure 3.4-11.	Robinson Butte to Cox Butte Route Alternatives	3-65
Figure 3.4-12.	Pacific Crest Trail and Dead Indian Memorial Highway Route Alternatives	3-67
Figure 3.4-13.	Keno Access Road and Clover Creek Road Route Alternatives	3-71
Figure 3.4-14.	Shasta View Irrigation District Alternative	3-76
Figure 3.4-15.	Klamath Compressor Station Site Alternatives	3-85
Figure 4.1-1.	USGS Topographic Map of the Jordan Cove LNG Terminal Project Site.....	4-3
Figure 4.1-2.	Existing Land Use of the Project Area	4-4
Figure 4.1-3.	Coastal Zone Management Area.....	4-9
Figure 4.1-4.	Structures Within Two Miles of the Jordan Cove Site	4-11
Figure 4.1-5.	Overview Map of the Pacific Connector Pipeline Project and LSRs on BLM and NFS Lands	4-157
Figure 4.1-6.	Occupied MAMU Stands Within the BLM Coos Bay and Roseburg Districts Crossed by the Pacific Connector Pipeline Route	4-158
Figure 4.1-7.	KOACs Within the BLM Roseburg District Crossed by the Pacific Connector Pipeline Route.....	4-159
Figure 4.1-8.	Summary of Total LSR Acres Directly and Indirectly Affected by the Pacific Connector Pipeline Project.....	4-161
Figure 4.1-9.	Comparison of Total LSR Acres Cleared by the Pacific Connector Pipeline Project and Total Acres of Matrix Reallocated to LSR.....	4-165
Figure 4.1-10.	Map of Occupied MAMU Stands Within the BLM Coos Bay District Crossed by the Pacific Connector Pipeline Route	4-167
Figure 4.1-11.	Comparison of Total Pacific Connector Pipeline Project Impacts on MAMU Stands and Matrix Reallocated to LSR (acres) in Coos Bay District.....	4-169
Figure 4.1-12.	Map of Reallocation from Matrix to LSR and MAMU Stands Within the BLM Coos Bay District.....	4-170
Figure 4.1-13.	Comparison of Total Pacific Connector Pipeline Project LSR Impacts and Matrix Reallocated to LSR (acres) Within BLM Coos Bay District LSR 261	4-172
Figure 4.1-14.	Comparison of Total LSR Acres Affected by the Pacific Connector Pipeline Project and Acres of Matrix Reallocated to LSR, Within BLM Coos Bay District	4-174
Figure 4.1-15.	Map of Off-site LSR Mitigation Proposals in the BLM Coos Bay District.....	4-175
Figure 4.1-16.	Map of Occupied MAMU Stands in the Pacific Connector Pipeline Corridor on the Roseburg District	4-177
Figure 4.1-17.	Total Acres of Occupied MAMU Stands Affected by the Pacific Connector Pipeline Project in the BLM Roseburg District	4-178
Figure 4.1-18.	Map of KOAC Sites Crossed by the Pacific Connector Pipeline Project in the BLM Roseburg District.....	4-180

Figure 4.1-19.	Map of KOAC P2199 and the Pacific Connector Pipeline, BLM Roseburg District.....	4-181
Figure 4.1-20.	Map of KOACs P0361 and P2294 and the Pacific Connector Pipeline, BLM Roseburg District.....	4-182
Figure 4.1-21.	Summary of Total KOAC Acres Affected by the Pacific Connector Pipeline Project in the BLM Roseburg District	4-183
Figure 4.1-22.	Map of Proposed Matrix to LSR Reallocation and LSOG Habitat in the BLM Roseburg District.....	4.1-185
Figure 4.1-23.	Comparison of Total LSR Acres Affected by the Pacific Connector Pipeline Project and Acres of Matrix Reallocated to LSR, BLM Roseburg District LSR 261	4-186
Figure 4.1-24.	Map of LSR 223 Crossed by the Pacific Connector Pipeline Project in the BLM Roseburg District.....	4-188
Figure 4.1-25.	Summary of Total LSR 223 Acres Affected by the Pacific Connector Pipeline Project on the BLM Roseburg District	4-189
Figure 4.1-26.	Comparison of Total LSR Acres Affected by the Pacific Connector Pipeline Project and Acres of Matrix Reallocated to LSR, BLM Roseburg District.....	4-191
Figure 4.1-27.	Map of Proposed Off-site LSR Mitigation Actions in the BLM Roseburg District.....	4-192
Figure 4.1-28.	Proposed Matrix to LSR Reallocation, Umpqua National Forest.....	4-194
Figure 4.1-29.	Comparison of Total LSR 223 Acres Affected by the Pacific Connector Pipeline Project and Acres of Matrix Reallocated to LSR, Umpqua National Forest	4-195
Figure 4.1-30.	Proposed Off-site Mitigation Actions in the Umpqua National Forest....	4-198
Figure 4.1-31.	Comparison of Total Pacific Connector Pipeline Project Impacts on LSR 223 and Estimated Edge Reduction Effect of Proposed Off-site Mitigation Measures (acres)	4-203
Figure 4.1-32.	Map of Proposed Matrix Reallocated to LSR in the Rogue River National Forest.....	4-204
Figure 4.1-33.	Comparison of Total LSR Acres Affected by the Pacific Connector Pipeline Project and Acres of Matrix Reallocated to LSR, Rogue River National Forest LSR 227	4-206
Figure 4.1-34.	Proposed Off-site Mitigation Actions in the Rogue River National Forest.....	4-208
Figure 4.1-35.	Comparison of Total Pacific Connector Pipeline Project Impacts on LSR 227 and Estimated Edge Reduction Effect of Proposed Off-site Mitigation Actions (acres)	4-213
Figure 4.1-36.	Comparison of Total LSR 261 Acres Affected by the Pacific Connector Pipeline Project and the Acres of Matrix Reallocated to LSR.....	4-221
Figure 4.1-37.	Comparison of Total LSR 223 Acres Affected by the Pacific Connector Pipeline Project and the Acres of Matrix Reallocated to LSR.....	4-225
Figure 4.1-38.	Comparison of Total LSR Acres Affected by the Pacific Connector Pipeline Project and Total Acres of Matrix Reallocated to LSR.....	4-228

Figure 4.1-39.	Comparison of Total LSR Acres Affected by Pacific Connector Pipeline Project and Total Acres of Matrix Reallocated to LSR.....	4-229
Figure 4.1-40.	Comparison of Total Pacific Connector Pipeline Project Impacts on LSRs 223 and 227 and Estimated Edge Reduction Effect of Proposed Off-site Mitigations on NFS Lands (acres).....	4-231
Figure 4.1-41.	Physiographic Provinces of the Northwest Forest Plan	4-233
Figure 4.1-42.	Map of Physiographic Provinces Crossed by the Pacific Connector Pipeline Project	4-234
Figure 4.1-43.	Comparison of Total Pacific Connector Pipeline Project Impacts on LSOG Habitat in LSRs and LSOG Habitat in Matrix Reallocated to LSR by Province (acres).....	4-235
Figure 4.1-44.	Map of Physiographic Provinces and MAMU Zones	4-238
Figure 4.1-45.	Comparison of Total LSOG Habitat Acres in Occupied MAMU Stands Affected by the Pacific Connector Pipeline Project and Acres of LSOG Habitat in the Matrix to LSR Reallocation by Province	4-239
Figure 4.1-46.	Comparison of Miles of Riparian Reserve Impacted by the Pacific Connector Pipeline Project and the Miles of Proposed Off-site Mitigation Actions within Riparian Reserves	4-242
Figure 4.3-1.	Dredged Material Management Units and Bore Locations.....	4-308
Figure 4.4-1.	Wetland Delineation of the LNG Project Site	4-413
Figure 4.5-1.	Vegetation Associations	4-436
Figure 4.5-2.	Sub-Ecoregions of Oregon	4-448
Figure 4.6-1.	Essential Fish Habitat Along the Waterway	4-566
Figure 4.6-2.	Submerged Aquatic Vegetation Within Proposed Slip and Access Channel.....	4-572
Figure 4.6-3.	Effects of Pipeline Stream Crossing Suspended Sediment Concentrations on Salmonids.....	4-612
Figure 4.7-1.	Recommendation for Avoidance of <i>Choiromyces alveolatus</i> Site	4-714
Figure 4.7-2.	Recommendation for Avoidance of <i>Gymnomyces abietis</i> Site.....	4-714
Figure 4.7-3.	Recommendation for Avoidance of <i>Otidea smithii</i> Site	4-715
Figure 4.7-4.	Recommendation for Avoidance of <i>Sedecula pulvinata</i> Site.....	4-715
Figure 4.8-1.	Recreation Areas in the Vicinity of the Jordan Cove LNG Terminal	4-733
Figure 4.8-2.	Wilderness Characteristics and the Pacific Connector Pipeline Project.....	4-758
Figure 4.8-3.	Key Observation Point (KOP) Locations.....	4-761
Figure 4.8-4.	KOP-T1. Weyerhaeuser North Spit Overlook. Existing and simulated views of the LNG terminal from the Weyerhaeuser North Spit Overlook.....	4-763
Figure 4.8-5.	KOP-T2. Trans-Pacific Parkway. Existing and simulated views of the LNG terminal from Trans-Pacific Parkway.	4-764
Figure 4.8-6.	KOP-T3. Horsfall Beach Campground and Day Use Area. Existing and simulated views of the LNG terminal from the Horsfall Beach Campground and Day Use Area.....	4-765
Figure 4.8-7.	KOP-T5. U.S. Highway 101 at McCullough Bridge, North. Existing and simulated views of the LNG terminal and South Dunes Power	

	Plant HRSG Units, from U.S. Highway 101 at the northern end of McCullough Bridge.	4-766
Figure 4.8-8.	KOP-T6. U.S. Highway 101 at the southern end of McCullough Bridge. Existing and simulated views of the LNG terminal, from U.S. Highway 101 at the southern end of McCullough Bridge.	4-768
Figure 4.8-9.	KOP-T7. Airport Lane, facing NW. Existing and simulated views of the LNG Terminal from Airport Lane, facing northwest.	4-769
Figure 4.8-10.	KOP-T8. Airport Lane, facing NE. Existing and simulated views of the LNG terminal.	4-770
Figure 4.8-11.	KOP-T9. Empire Shoreline. Existing and simulated views of the LNG Terminal from the boat launch near Michigan Avenue in Empire, Oregon.	4-771
Figure 4.8-12.	KOP-T10. Pier Near Industrial Facilities at South End of Trans-Pacific Parkway. Existing and simulated views of the LNG terminal from the pier near the southern end of Trans-Pacific Parkway.	4-772
Figure 4.8-13.	KOP-T11. BLM North Spit Boat Launch Area. Existing and simulated views of the LNG Terminal from the BLM North Spit Boat Launch Area, on the North Spit.	4-774
Figure 4.8-14.	KOP-T12. Pony Slough. Existing and simulated views of the South Dunes Power Plant HRSG units from the southern end of Pony Slough, in Coos Bay.	4-775
Figure 4.8-15.	Forest Service VQO and BLM VRM Classes for the Project Area and Locations of KOPs (MP 0 to 85)	4-779
Figure 4.8-16.	Forest Service VQO and BLM VRM Classes for the Project Area and Locations of KOPs (MP 85 to 166)	4-780
Figure 4.8-17.	Forest Service VQO and BLM VRM Classes for the Project Area and Locations of KOPs (MP 166 to 228)	4-781
Figure 4.8-18a.	KOP-P2. Trail Post Office (Near MP 123). Existing conditions (above) and post-construction (year 0) simulation (below), of the pipeline right-of-way as viewed from the Trail Post Office.	4-785
Figure 4.8-18b.	KOP-P2. Trail Post Office (Near MP 123). Simulated views of the pipeline right-of-way as viewed from the Trail Post Office, at 5 and 25 years following construction, respectively.	4-786
Figure 4.8-19a.	KOP-P3. Highway 140 near Little Butte Creek (MP 145.6). Existing conditions (above) and post-construction simulation (below), of the pipeline right-of-way as viewed at the Highway 140 crossing.	4-787
Figure 4.8-19b.	KOP-P3. Highway 140 near Little Butte Creek (MP 145.6). Simulated views of the pipeline right-of-way as viewed from the Highway 140 crossing, at 5 and 25 years following construction, respectively.	4-788
Figure 4.8-20a.	KOP-P4. Big Elk Road (Forest Road 37, MP 161.4). Existing (above) and post-construction simulation (below), of the pipeline right-of-way as viewed at the Big Elk Road (Forest Road 37) crossing.	4-789
Figure 4.8-20b.	KOP-P4. Big Elk Road (Forest Road 37, MP 161.4). Simulated views of the pipeline right-of-way as viewed from at the Big Elk	

	Road (Forest Road 37) crossing, at 5 and 25 years following construction, respectively.	4-790
Figure 4.8-21a.	KOP-P5. Clover Creek Road (MP 172.2). A long view of existing (above) and post-construction simulation (below), of the pipeline right-of-way as viewed along Clover Creek Road.	4-791
Figure 4.8-21b.	KOP-P5. Clover Creek Road (MP 172.2). Simulated long views of the pipeline right-of-way as viewed along Clover Creek Road, at 5 and 25 years following construction, respectively.	4-792
Figure 4.8-22a.	KOP-P6. Clover Creek Road (MP 176.8). Existing (above) and post-construction simulation (below), of the pipeline right-of-way as viewed from Clover Creek Road near Spencer Creek.	4-795
Figure 4.8-22b.	KOP-P6. Clover Creek Road (MP 176.8). Simulated views of the pipeline right-of-way as viewed from Clover Creek Road near Spencer Creek, at 5 and 25 years after construction, respectively.	4-796
Figure 4.8-23a.	KOP-P7. Clover Creek Road (MP 170.1). Long view of existing (above) and post-construction simulation (below), of the pipeline right-of-way adjacent to Clover Creek Road.	4-797
Figure 4.8-23b.	KOP-P7. Clover Creek Road (MP 170.1). Long simulated views of the pipeline right-of-way adjacent to Clover Creek Road, 5 and 25 years after construction, respectively.	4-798
Figure 4.8-24a.	KOP-P8. Pacific Crest Trail Northbound (MP 167.8). Long view of existing (above) and post-construction simulation (below), of the pipeline right-of-way from the view of a northbound hiker along the PCT.	4-799
Figure 4.8-24b.	KOP-P8. Pacific Crest Trail Northbound (MP 167.8). Long simulated views of the pipeline right-of-way northbound on PCT, 5 and 25 years after construction, respectively.	4-800
Figure 4.8-25a.	KOP-P9. The Cleared Right-of-Way and the Pacific Crest Trail (167.8). Long view of existing (above) and post-construction simulation (below), of the pipeline right-of-way at the PCT crossing.	4-801
Figure 4.8-25b.	KOP-P9. The Cleared Right-of-Way and the Pacific Crest Trail (167.8). Long simulated views of the pipeline right-of-way at the PCT crossing, 5 and 25 years after construction, respectively.	4-802
Figure 4.9-1.	Construction Workforce Projections.	4-816
Figure 4.9-2.	Potential Environmental Justice Populations by Census Tract for the Jordan Cove LNG Terminal.	4-836
Figure 4.9-3.	Potential Environmental Justice Populations by Census Tract for the Pacific Connector Pipeline.	4-861
Figure 4.10-1.	Roads in the Vicinity of the Proposed LNG Terminal.	4-869
Figure 4.12-1.	Trends in Oregon's In-State GHG Emissions ¹⁶⁴	4-933
Figure 4.12-2.	Noise Sensitive Areas in the Vicinity of the Jordan Cove Site.	4-940
Figure 4.12-3.	Estimated Noise Levels From General Construction Activities at the Jordan Cove Terminal Site.	4-943
Figure 4.12-4.	Estimated Noise Levels From LNG Terminal Operations.	4-947
Figure 4.12-5.	Klamath Compressor Station Location and Nearest NSAs.	4-958
Figure 4.13-1.	Vapor Fences at Jordan Cove Facility.	4-997

Figure 4.13-2.	LNG Spill (i.e., liquid release scenario) from a Guillotine Rupture of the Ship Loading Header into the Marine Area Impoundment Basin (1 m/s).....	4-998
Figure 4.13-3.	LNG Spill (i.e., Liquid Release Scenario) from a Guillotine Rupture of the Ship Loading Header into the Process Area Impoundment Basin (1 m/s).....	4-999
Figure 4.13-4.	LNG Spill (i.e., Liquid Release Scenario) from a Guillotine Rupture of the Ship Loading Header into the Marine Berth Trench System (1 m/s).....	4-1000
Figure 4.13-5.	LNG Spill (i.e., Liquid Release Scenario) from a Guillotine Rupture of the Ship Loading Header into the Liquefaction Trench System (1 m/s).....	4-1001
Figure 4.13-6.	LNG Jetting and Flashing Scenario from a Rupture of the Ship Loading Header at the LNG Storage Tank pg 4-955Area (1 m/s). The ½-LFL vapor cloud extends across Jordan Cove property into the Henderson Marsh.....	4-1002
Figure 4.13-7.	LNG Jetting and Flashing Scenario from a Rupture of the Ship Loading Header at the Marine Area (1 m/s).....	4-1003
Figure 4.13-8.	LNG Jetting and Flashing from a Rupture of the Ship Loading Header between the LNG Storage Tank Area and the Marine Area (1 m/s).....	4-1004
Figure 4.13-9.	LNG Jetting and Flashing Scenario from a Rupture of the LNG Rundown Line at the Liquefaction Area (1 m/s).....	4-1005
Figure 4.13-10.	MR Release from Rupture of the Interstage Refrigerant Pump Discharge Piping (1 m/s).....	4-1007
Figure 4.13-11.	MR Release from Rupture of the Refrigerant Pump Discharge Piping (1 m/s).....	4-1008
Figure 4.13-12.	MR Release from Rupture of the 6-Inch-Diameter MR Process Piping (1 m/s). Note that the ½-LFL vapor cloud extends beyond Jordan Cove property to the southwest.	4-1009
Figure 4.13-13.	Ethylene Release from Rupture of the Ethylene Trucking Hose (1 m/s).....	4-1010
Figure 4.13-14.	MR Overpressure Scenario at Train 1	4-1013
Figure 4.13-15.	MR Overpressure Scenario at Train 2	4-1014
Figure 4.13-16.	MR Overpressure Scenario at Train 3	4-1015
Figure 4.13-17.	MR Overpressure Scenario at Train 4	4-1016
Figure 4.13-18.	Thermal Radiation Zones at the Jordan Cove Facility	4-1021
Figure 4.14-1a.	Watersheds Crossed by the Pacific Connector Pipeline Project	4-1052
Figure 4.14-1b.	Watersheds Crossed by the Pacific Connector Pipeline Project	4-1053

ACRONYMS AND ABBREVIATIONS

°C	degrees Celsius
°F	degrees Fahrenheit
µg/m ³	micrograms per cubic meter
AADT	average annual daily traffic
AAQS	ambient air quality standards
AASHTO	American Association of State Highway Transportation Officials
ACDP	air contaminant discharge permit
ACEC	Area of Critical Environmental Concern
ACFM	actual cubic feet per minute
ACHP	Advisory Council on Historic Preservation
ACS	Aquatic Conservation Strategy
AEGL	Acute Exposure Guideline Level
AGPA	Alaska Gasline Port Authority
AIA	annual instrument approach
AIRFA	American Indian Religious Freedom Act
AIS	Automatic Information System
AMSL	above mean sea level
ANFO	Ammonium Nitrate and Fuel Oil
ANS	aquatic nuisance species
ANSI	American National Standards Institute
AOC	area of concern
APDBA	applicant prepared draft biological assessment
APE	area of potential effect
API	American Petroleum Institute
Applicants	Jordan Cove Energy and Pacific Connector
AQCR	Air Quality Control Region
AQRV	Air Quality-Related Values
AR2	Second Assessment Report (IPCC)
AR4	Fourth Assessment Report (IPCC)
AR5	Fifth Assessment Report (IPCC)
ASCE	American Society of Civil Engineers
ASL	above sea level
ASME	American Society of Mechanical Engineers
ASTM	American Society for Testing and Materials
ATON	aids to navigation
ATV	all-terrain vehicle
Avista	Avista Corporation
BA	biological assessment
BACT	Best Available Control Technology
BBS	Breeding Bird Survey
BC	British Columbia
BCC	Birds of Conservation Concern
BCR	Bird Conservation Region
BE	Biological Evaluation
BFM	bonded fiber mix
bgs	below ground surface
BIA	U.S. Bureau of Indian Affairs

BLEVE	boiling-liquid-expanding-vapor explosion
BLM	U.S. Department of the Interior Bureau of Land Management
BMP	best management practice
BO	biological opinion
BOEM	Bureau of Ocean Energy Management
BOG	boil-off gas
BPA	Bonneville Power Administration
BRAR13	2013 Blue Ridge Alternative Route
Bscf	billion standard cubic feet
Bscf/d	billion standard cubic feet per day
BST	Baker-Strehlow-Tang
Btu	British thermal units
Btu/ft-hr-°F	British thermal units per foot per hour per degrees Fahrenheit
Btu/ft ² -hr	British thermal units per square foot per hour
Btu/lb-°F	British thermal units per pound per degrees Fahrenheit
Btu/kWh	British thermal units per kilowatt hour
BVA	block valve
BWT	ballast water treatment
BWE	ballast water exchange
Byram	Byram Archaeological Consulting LLC
C-2	C-2 Cattle Company
CAA	Clean Air Act
CadnaA	computer aided noise abatement
CAL	Citizens Against LNG
CBC	Christmas Bird Count
CBEMP	Coos Bay Estuary Management Plan
CBNBWB	Coos Bay-North Bend Water Board
CBRL	Coos Bay Rail Link
CCS	carbon capture and storage
CEQ	Council on Environmental Quality
Certificate	Certificate of Public Convenience and Necessity
CFD	computational fluid dynamics
CFR	Code of Federal Regulations
CH ₄	methane
CHE	Coast and Harbor Engineering
CHU	critical habitat unit
CMP	Compensatory Mitigation Plan
CMZ	Channel Migration Zone
CO	carbon monoxide
CO ₂	carbon dioxide
CO ₂ e	carbon dioxide equivalent
Coast Guard	U.S. Department of Homeland Security Coast Guard
COC	Corridor of Concern
COE	U.S. Army Corps of Engineers
COI	Certificate of Inspection
Commission	Federal Energy Regulatory Commission
Coos Tribes	Confederated Tribes of Coos, Lower Umpqua, and Siuslaw Indians
COTP	Captain of the Port
Cow Creek Tribe	Cow Creek Band of Umpqua Tribe of Indians
CP	cathodic protection

CPR	cardio-pulmonary resuscitation
CRITFC	Columbia River Inter-Tribal Fish Commission
CSZ	Cascadia Subduction Zone
CTG	combustion turbine generators
CWA	Clean Water Act
CWD	coarse wood
cy	cubic yard
CZMA	Coastal Zone Management Act
DA	Development Aquatic
dB	decibel
dBA	A-weighted decibels
dBC	C-weight decibels
dbh	diameter at breast height
dB RMS	decibels root mean squared
DBV/PERC	double ball valve and powered emergency release coupling
DC	direct current
DCS	distributed control system
DE	Design Earthquake
DEA	David Evans & Associates, Inc.
DEGADIS	dense gas dispersion model
DEIS	draft environmental impact statement
Discovery Plan	<i>Plan and Procedures Addressing Unanticipated Discoveries of Cultural Resources and Human Remains</i>
DMEF	Dredged Material Evaluation Framework
DMMU	Dredged Material Management Unit
DOD	U.S. Department of Defense
DOE	U.S. Department of Energy
DOGAMI	Oregon Department of Geology and Mineral Industries
DOT	U.S. Department of Transportation
DP	Direct Pipe
DPS	Distinct Population Segments
DTR	daily timing restriction
DWSA	drinking water source area
ECA	Emissions Control Area
ECRP	Pacific Connector's Erosion Control and Revegetation Plan
ECSI	Environmental Cleanup Site Information
EEZ	economic exclusion zone
EFH	essential fish habitat
EFSC	Oregon Energy Facility Siting Council
EFU	Exclusive Farm Use
EI	environmental inspector
EIA	Energy Information Administration
EIS	environmental impact statement
EMD	electric motor driven
EO	Executive Order
EPA	U.S. Environmental Protection Agency
EPAct	Energy Policy Act of 2005
EPCM	Engineering, Procurement, and Construction Management
ERP	emergency response plan
ERPG	Emergency Response Planning Guidelines
ESA	Endangered Species Act

ESCP	Erosion and Sedimentation Control Plan
ESD	emergency shutdown
ESU	Evolutionarily Significant Units
EWMP	Estuarine Wetland/Open Water Mitigation Plan
F	Forest
FAA	Federal Aviation Administration
FDS	Fire Dynamics Simulator
FEED	front-end engineering design
FEIS	final environmental impact statement
FEMAT	Forest Ecosystem Management Assessment Team
FERC	Federal Energy Regulatory Commission
FHWA	Federal Highway Administration
FLPMA	Federal Land and Policy Management Act of 1976
FMSC	Federal Maritime Security Council
FOI	Forest Operations Inventory
Forest Service	U.S. Department of Agriculture Forest Service
fps	foot per second
FR	Federal Register
FSH	Forest Service Handbook
FSM	Forest Service Manual
ft ³	cubic feet
FTA	free trade agreement
FTE	full-time equivalent
FWCA	Fish and Wildlife Coordination Act
FWS	U.S. Department of the Interior Fish and Wildlife Service
FY	Fiscal Year
GAO	Government Accountability Office
g/hp-hr	grams per horsepower per hour
GDP	Gross Domestic Product
GHG	greenhouse gas
GIS	geographic information system
GNN	Gradient Nearest Neighbor
gpm	gallons per minute
GPS	global positioning system
Grand Ronde Tribes	Confederated Tribes of the Grand Ronde Reservation
GRI	GRI Geotechnical and Environmental Consultants
GTN	Gas Transmission Northwest Corporation
GTP	Global Temperature change Potential
GWP	global warming potential
H	horizontal
H ₂ S	hydrogen sulfide
HAP	Hazardous Air Pollutant
HAZOP	hazard and operability review
HBC	Hudson Bay Company
HCA	High Consequence Area
HDD	horizontal directional drill
HEC-RAS	Hydrologic Engineering Center-River Analysis System
HMU	Herd Management Unit
HOA	Head of Agreement
hp	horsepower
HPMP	Historic Properties Management Plan

HPS	high pressure sodium
HRA	Historical Research Associates, Inc.
HRSG	heat recovery steam generator
HU	hydrologic unit
HUC	Hydrologic Unit Code
Hz	hertz
I-5	Interstate 5
IBC	International Building Code
IHA	Incidental Harassment Authorization
IMO	International Maritime Organization
IOP	Interagency Operating Procedure
IPCC	Intergovernmental Panel on Climate Change
IRA	Inventories Roadless Area
ISA	International Society for Automation
ISO	International Organization for Standardization
ISPS Code	International Ship and Port Facility Security Code
JCE & PCGP	Jordan Cove Energy and Pacific Connector Gas Pipeline Project
Jordan Cove	Jordan Cove Energy Project L.P.
Jordan Cove's Plan	Jordan Cove's Upland Erosion Control, Revegetation, and Maintenance Plan
Jordan Cove's Procedures	Jordan Cove's Wetland and Waterbody Construction and Mitigation Procedures
JPA	Joint Permit Application
KBV	Kiewitt and Black & Veatch
kJ	kilojoules
KO	Knockout
KOAC	Known Owl Activity Center
km	kilometer
KOP	key observation point
kPa	kilopascals
kV	kilovolt
kVa	kilovolt amperes
kW	kilowatt
kWh	kilowatt-hour
L _{dn}	day-night sound level
L _{eq}	equivalent sound level
Latgawa Tribe	Latgawa Native American Indian Tribe
lb/MWh	pound per megawatt-hour
LDC	local distribution company
LEDPA	Least Environmentally Damaging Practicable Alternative
Levy	Lloyd Levy Consulting, LLC
LFL	lower flammable limit
LiDAR	light detection and ranging
LMP	land management plan
LNG	liquefied natural gas
LOI	Letter of Intent
LOR	Letter of Recommendation
LRMP	Land and Resource Management Plan
LSOG	late-successional and old-growth
LSR	Late Successional Reserve
LSRA	Late Successional Reserve Assessment

LSRMA	Late-Successional Reserve Management Area
LUCS	Land Use Compatibility Statement
LWD	large woody debris
m ²	square meter
m ³	cubic meters
m ³ /hr	cubic meters per hour
m/hr	meter per hour
m/s	meters per second
MA	Management Area
MAMU	marbled murrelet
MAOP	maximum allowable operating pressure
MARSEC	Maritime Security
MBF	thousand board feet
MBTA	Migratory Bird Treaty Act
MCE	Maximum Considered Earthquake
mcy	million cubic yards
mg/l	milligram per liter
mg/d	million gallons per day
mg/kg	milligram per kilogram
MHHW	mean higher high water
MIS	Management Indicator Species
MLLW	mean lower low water
MLRA	Major Land Resource Area
MLV	mainline block valve
mm	millimeter
MMBF	million board feet
MMBtu	million British thermal unit
MMBtu/hr	million British thermal units per hour
MMcf/d	million cubic feet per day
mmhos/cm	millimhos per centimeter
MMPA	Marine Mammal Protection Act
MMTPA	million metric tons per annum
MOA	Memorandum of Agreement
MOU	Memorandum of Understanding
MP	milepost
mph	miles per hour
MPRSA	Marine Protection, Research, and Sanctuary Act
MR	Mixed Refrigerant
MRL	Mixed Refrigerant liquid
MSA	Magnuson-Stevens Fishery Conservation and Management Act
MSL	mean sea level
MTBM	micro-tunnel boring machine
MTSA	Maritime Transportation Security Act
MVA	megavolt ampere
Mw	maximum moment magnitude
MW	megawatt
MWh	megawatt-hour
N ₂ O	nitrous oxide
NAAQS	National Ambient Air Quality Standards
NAISA	National Aquatic Invasive Species Act of 2003

NANPCA	Nonindigenous Aquatic Nuisance Prevention and Control Act of 1990
NAS	Non-indigenous aquatic species
NAVD88	North American Vertical Datum of 1988
NCA	National Climate Assessment
NCDC	National Climactic Data Center
NCM	navigation channel mile
NEB	National Energy Board
NEPA	National Environmental Policy Act
NESHAP	National Emission Standards for Hazardous Air Pollutants
NF	National Forest
NFMA	National Forest Management Act
NFPA	National Fire Protection Association
NFS	National Forest System
NGA	Natural Gas Act
NGL	natural gas liquids
NHPA	National Historic Preservation Act
NISA	National Invasive Species Act of 1996
NMFS	National Oceanic and Atmospheric Administration National Marine Fisheries Service
nmi	nautical mile
NNL	National Natural Landmark
NNSR	Nonattainment New Source Review
NO	nitrogen oxide
NO ₂	nitrogen dioxide
NOA	Notice of Availability
NOAA	National Oceanic and Atmospheric Administration
NOI	Notice of Intent
Northwest	Northwest Pipeline GP
NO _x	oxides of nitrogen
NPDES	National Pollutant Discharge Elimination System
NPH	Notice of Presumed Hazards
NPS	National Park Service
NPWHC	North Point Workforce Housing Complex
NRA	National Recreation Area
NRCS	Natural Resources Conservation Service
NRF	nesting, roosting, and foraging
NRHP	National Register of Historic Places
NSA	noise-sensitive area
NSO	northern spotted owl
NSPS	New Source Performance Standards
NSR	New Source Review
NTU	nephelometric turbidity unit
NVIC	Navigation and Vessel Inspection Circular
NWFP	Northwest Forest Plan
NWI	National Wetlands Inventory
NWS	National Weather Service
O ₂	oxygen
O&C Act	Oregon and California Lands Act
O&C Lands	Oregon and California Lands
OAR	Oregon Administrative Record

OBE	Operating Basis Earthquake
OCIMF	Oil Companies International Marine Forum
OCMP	Oregon Coastal Management Program
OCRM	National Oceanic and Atmospheric Administration Office of Coast and Ocean Resource Management
ODA	Oregon Department of Agriculture
ODE	Oregon Department of Energy
ODEQ	Oregon Department of Environmental Quality
ODF	Oregon Department of Forestry
ODFW	Oregon Department of Fish and Wildlife
ODHS	Oregon Department of Human Services
ODLCD	Oregon Department of Land Conservation and Development
ODNRA	Oregon Dunes National Recreation Area
ODOT	Oregon Department of Transportation
ODSL	Oregon Department of State Lands
OEP	FERC's Office of Energy Projects
OHWM	ordinary high water mark
OHV	Off-Highway Vehicle
OHWM	ordinary high water mark
OIMB	Oregon Institute of Marine Biology
OPRD	Oregon Parks and Recreation Department
OPS	Office of Pipeline Safety
OPT	Ocean Power Technologies
ORBIC	Oregon Biodiversity Information Center
Oregon GAP	Oregon Gap Analysis Project
Oregon LNG	LNG Development Company LLC and the Oregon Pipeline Company
ORS	Oregon Revised Statute
OSHA	Occupational Safety and Health Administration
OSMB	Oregon State Marine Board
OSMRE	Office of Surface Mining Reclamation Enforcement
OSWB	Oregon State Weed Board
OWRD	Oregon Water Resources Department
Pacific Connector	Pacific Connector Gas Pipeline L.P.
PAG	plant association group
PAH	polynuclear aromatic hydrocarbon
PAR	permanent access road
PCB	polychlorinated biphenyl
PCE	primary constituent element
PCS	Project Consulting Services, Inc.
PCT	Pacific Crest Trail
PCTA	Pacific Crest Trail Association
PES	PES Environmental, Inc.
PFMC	Pacific Fishery Management Council
PFYC	Potential Fossil Yield Classification
PG&E	Pacific Gas and Electric Company
PGA	peak horizontal ground acceleration
PHMSA	Pipeline and Hazardous Materials Safety Administration
PI	point of intersection
PILT	Payment In Lieu of Taxes
P.L.	Public Law

Plan	FERC's Upland Erosion Control, Revegetation, and Maintenance Plan
PM ₁₀	particulate matter with a diameter of less than 10 microns
PM _{2.5}	particulate matter with a diameter of less than 2.5 microns
POD	Plan of Development
Port	Oregon International Port of Coos Bay
PORTS	Physical Oceanographic Real-Time System
PP&L	Pacific Power and Light Company
ppm	parts per million
ppmvd	parts per million by volume, dry basis
PPV	peak particle velocity
Procedures	FERC's Wetland and Waterbody Construction and Mitigation Procedures
Project	Jordan Cove Energy and Pacific Connector Gas Pipeline Project
PSD	Prevention of Significant Deterioration
PSE	Puget Sound Energy
PSEL	plant site emission limit
PSHA	Probabilistic Seismic Hazard Analysis
psi	pounds per square inch
psig	pounds per square inch gauge
PST	Pacific Standard Time
psu	practical salinity unit
PWA	potential wilderness area
R.	Range
R&A	Rogers and Associates
RBC	Risk-Based Concentration
Reclamation	U.S. Department of the Interior Bureau of Reclamation
REO	Regional Ecosystem Office
RFPD	Rural Fire Protection District
RHA	Rivers and Harbors Act
RM	river mile
RML	rapidly moving landslide
RMP	Resource Management Plan
RNA	Research Natural Area
RPT	rapid phase transition
ROD	Record of Decision
RPT	rapid phase transition
RV	recreational vehicle
S&M	Survey and Manage
Sandia	Sandia National Laboratories
SAP	sampling and analysis plan
SAV	submerged aquatic vegetation
SBS	Siskiyou BioSurvey, LLC
SD	scaled distance factor
SDWA	Safe Drinking Water Act
SEL _{cum}	cumulative sound exposure level
SEP	surface emissive power
SEV	severity of ill effect
SHN	SHN Consulting Engineers & Geologists, Inc.
SHPO	State Historic Preservation Officer
SHU	SuiTable Habitat Unit

SIGTTO	Society of International Gas Tanker and Terminal Operators
Siletz Tribes	Confederated Tribes of the Siletz Reservation
SMPE	South Mist Pipeline Extension
SMS	Scenery Management System
SMU	Species Management Unit
SO ₂	sulfur dioxide
SOLAS	Safety of Life at Sea
SONCC	Southern Oregon/Northern California Coast
SORSC	Southwest Oregon Regional Safety Center
SPCCP	Spill Prevention, Containment, and Countermeasures Plan
SRMA	Special Recreation Management Area
SSA	sole or principal source aquifer
SSE	Safe Shutdown Earthquake
SSI	Sensitive Security Information
SSTEMP	Stream Segment Temperature Model
SSURGO	Soil Survey Geographic (Database)
STATSGO	State Soil Geographic (Database)
STEP	Shipboard Technology Evaluation Program
STG	steam turbine generator
SVID	Shasta View Irrigation District
SWPCP	Storm Water Pollution Control Plan
SWPPP	Stormwater Pollution Prevention Plan
t	metric ton
T.	Township
TAR	temporary access road
TCP	Traditional Cultural Property
Tetra Tech	Tetra Tech, Inc.
TEWA	temporary extra work area
t/hr	metric ton per hour
THPO	Tribal Historic Preservation Office
TIA	Traffic Impact Analysis
TMDL	Total Maximum Daily Load
TMP	Transportation Management Plan
TPY	tons per year
TR	Timberland Resource
TSS	total suspended solids
Tuscarora	Tuscarora Gas Transmission Company
TVS	total volatile solids
U.S.	United States
UCSA	uncleared storage area
UFL	upper flammable limit
UPS	uninterruptible power supply
U.S.C.	United States Code
USDOI	U.S. Department of the Interior
USGCRP	United States Global Change Research Program
USGS	U.S. Geological Survey
V	vertical
V _s	shear velocity
v/c	volume-to-capacity ratio
VFR	Visual Flight Rules
VMS	Visual Management System

VOC	volatile organic compound
VQO	Visual Quality Objective
VRM	visual resource management
WD	Water-Dependent Development Shorelands
WEP	Washington Expansion Project
WHPA	wellhead protection area
Williams Northwest	Williams Northwest Pipeline Company
Williams Pacific Operator	Williams Pacific Connector Gas Operator, LLC
Williams	Williams Companies Inc.
WNV	West Nile virus
WQC	401 Water Quality Certification
WRCC	Western Regional Climatic Center
WRP	Wetland Reserve Program
WSA	Waterway Suitability Assessment
WSR	Waterway Suitability Report