

**APPENDIX E**

**Denali Alternative –  
Visual Impact Assessment**

## **APPENDIX E: DENALI ALTERNATIVE – VISUAL IMPACT ASSESSMENT**

---

### **Table of Contents**

Appendix E-1a .....	Affected Environment, Impacts, and Mitigation Measures at Key Observation Points
Appendix E-1b .....	Maps of Key Observation Points
Appendix E-1c .....	Existing Conditions and Visual Simulation Imagery for Key Observation Points
Appendix E-2 .....	Completed National Park Service Visual Resource Inventory Forms at Key Observation Points

**APPENDIX E-1a**

**Affected Environment, Impacts, and Mitigation Measures at Key Observation Points**

## **APPENDIX E-1a: AFFECTED ENVIRONMENT, IMPACTS, AND MITIGATION MEASURES AT KEY OBSERVATION POINTS**

---

### **Table of Contents**

E.1	AFFECTED ENVIRONMENT, IMPACTS, AND MITIGATION MEASURES AT KEY OBSERVATION POINTS IN THE DENALI NATIONAL PARK AND PRESERVE.....	E-1
E.1.1	Evaluation Criteria.....	E-1
E.1.2	KOP 2018-8: Denali Park Road KOP.....	E-2
E.1.3	KOP 2018-9: Government Hill KOP.....	E-3
E.1.4	KOP 2018-10: Railroad above Horseshoe Lake KOP.....	E-3
E.1.5	KOP 2018-11: Mt. Healy Overlook Trail Summit KOP .....	E-4
E.1.6	KOP 2018-12: Triple Lakes Trail KOP .....	E-5
E.1.7	KOP 2018-13: Nenana River Pedestrian Bridge KOP.....	E-5
E.1.8	KOP 2018-14: George Parks Highway Milepost 236 KOP.....	E-6

### **List of Tables**

Table E.1-1	Key Observation Points in Denali National Park and Preserve .....	E-1
Table E.1.1-1	Visual Resource Inventory Values and Impact Ratings for Key Observation Points in the Denali National Park and Preserve .....	E-2

### **List of Figures**

*(See appendices E-1b and E-1c)*



**E.1 AFFECTED ENVIRONMENT, IMPACTS, AND MITIGATION MEASURES AT KEY OBSERVATION POINTS IN THE DENALI NATIONAL PARK AND PRESERVE**

Alaska Gasline Development Corporation (AGDC) worked closely with National Park Service (NPS) representatives from Denali National Park and Preserve (DNPP) to complete field work and prepare an analysis of visual impacts of the Alaska LNG Project (Project) Denali Alternative on the DNPP. This document provides the resulting visual analysis and includes the corresponding Key Observation Point (KOP) maps, existing conditions images and visual simulations, and NPS KOP Visual Resource Inventory (VRI) forms (see appendix E-1b, E-1c, and E-2, respectively).

As part of the visual analysis, AGDC representatives, accompanied by NPS employees, conducted a visual resource inventory using NPS methodology, for seven KOPs in the DNPP in June and July 2018. The remainder of this document describes the methodology for the NPS visual analysis, describes existing views at the KOPs, and evaluates the Denali Alternative’s potential visual resource impacts at the KOPs. The KOPs are listed in table E.1-1 below and their locations shown on figures E.1-1 through E.1-14 in appendix E-1b.

TABLE E.1-1			
Key Observation Points in Denali National Park and Preserve			
KOP/Description	Latitude	Longitude	Direction (degrees) of View
2018-8: Denali Park Road <sup>a</sup>	63.729108	-148.885863	Left extent: 360 Right extent: 235
2018-9: Government Hill	63.724800	-148.936000	Left extent: 40 Right extent: 235
2018-10: Railroad Above Horseshoe Lake	63.741000	-148.914000	Left extent: 20 Right extent: 160
2018-11: Mt. Healy Overlook Trail Summit	63.742427	-148.953290	Left extent: 20 Right extent: 252
2018-12: Triple Lakes Trail	63.653000	-148.887130	Left extent: 340 Right extent: 40
2018-13: Nenana River Pedestrian Bridge	63.736457	-148.886472	Left extent: 290 Right extent: 195
2018-14: South of George Parks Hwy Milepost 236	63.709960	-148.887130	Left extent: 320 Right extent: 170

<sup>a</sup> NPS staff determined that the view at the intersection of the George Parks Highway and Park Road was more appropriate than at the turn for the Post Office.

**E.1.1 Evaluation Criteria**

In consultation with the Alaska Department of Natural Resources (ADNR) and the Bureau of Land Management (BLM), this environmental impact statement applies the BLM Visual Resource Management methodology for visual resources potentially affected by Project components, including for visual resources on non-BLM lands. Outside the DNPP, the process was modified to account for the lack of visual management objectives. For KOPs within the DNPP, the NPS VRI methodology was applied.

The NPS VRI considers both scenic quality and view importance: scenic quality is determined through a scoring system that considers landscape character integrity, vividness, and visual harmony. The view importance rating is determined by evaluating publicity, management, visitation, duration, and sensitivity. Table E.1.1-1 summarizes the scenic quality and view importance ratings for each KOP. To

evaluate visual impacts, AGDC prepared visual simulations for each KOP. Appendix E-1c provides existing condition images, along with these simulations.

Key Observation Point	Scenic Quality <sup>b</sup>	View Importance <sup>b</sup>	Scenic Inventory Value <sup>b</sup>	Potential Impact After Construction	Potential Impact After Restoration
Denali Park Road	C	4	Low	Low	Low
Government Hill	A	3	Very High	Low	Low
Railroad Above Horseshoe Lake <sup>a</sup>	B	4	Medium	Low	Low
Mt. Healy Overlook Trail Summit	B	2	Very High	Moderate	Low
Triple Lakes Trail	B	3	High	Low	Low
Nenana River Pedestrian Bridge	C	4	Low	High	Moderate
South of George Parks Highway Milepost 236	B	4	Medium	Moderate	Moderate

<sup>a</sup> Due to the inability to access the Alaska Railroad right-of-way, the NPS selected a proxy location near, but not at, the coordinate listed in table E.1-1. This proxy location was used to determine scenic quality and capture photos used to demonstrate existing conditions and simulate potential visual impacts.

<sup>b</sup> Scenic quality, view importance, and scenic inventory ratings are based on NPS methodology, as provided in Sullivan and Meyer, 2016.

## E.1.2 KOP 2018-8: Denali Park Road KOP

### E.1.2.1 Affected Visual Environment

The view is from the George Parks Highway junction with the Denali Park Road from the multiuse trail adjacent to the highway. The view is looking northeast to southeast across the George Parks Highway toward Sugar Loaf Mountain, Mt. Fellows, and distant mountains. The Park entrance is well publicized, but not necessarily for the view. Nearly all park visitors pass this junction during their visit, but most visitors do not linger at this viewpoint. Pedestrian use on the trail is also just visitors passing through. The landscape character type is natural, the scenic quality rating is C, and the view importance rating is 4; therefore, the scenic inventory value is low.

### E.1.2.2 Project Activities Generating Impacts

AGDC would construct the Mainline Facilities parallel to the George Parks Highway, on the east side of the highway. At its nearest point, the Mainline Facilities would be about 0.1 mile from KOP 2018-8; however, the nearest visible segment of the Mainline Facilities would be about 0.3 mile south of the KOP.

### E.1.2.3 Visual Impacts During Construction and Operation

*Potential impact of Denali Alternative immediately after construction:* There is potential for low visual contrast from the proposed Denali Alternative (see figures E.1.2-1b and E.1.2-2b in appendix E-1c). The right-of-way is only slightly visible after construction in the right furthest extent of the view to the southeast. Viewers do not spend a lot of time at this location and there are no prominent features in the view.

*Potential impact of Denali Alternative after restoration:* Mitigation measures would reduce the already low visual contrast (see figure E.1.2-1c in appendix E-1c).

#### **E.1.2.4 Mitigation Measures**

Revegetation efforts would reduce the contrast at this location.

### **E.1.3 KOP 2018-9: Government Hill KOP**

#### **E.1.3.1 Affected Visual Environment**

The view is from Government Hill, extending from Sugar Loaf Mountain to the descending slope of Erratic Ridge. This is a popular location for viewing the historic train trestle over Riley Creek, as well as the fall colors on the mountains and in the aspen trees below the park road. Several interesting forms add interest to the view including the trestle, water, and rugged mountains. The view is promoted among photographers and train enthusiasts as well as informally by bus drivers and NPS staff. Management actions include clearing trees and potentially widening an informal pullout to improve the visitor experience at this location. The view, captured in photographs, is highly published and used in some NPS promotion materials. Most visitors only stop briefly, but photographers wait long periods at this location for the train to cross the trestle. The landscape character type is natural, the scenic quality rating is A, and the view importance rating is 3; therefore, the scenic inventory value is very high.

#### **E.1.3.2 Project Activities Generating Impacts**

AGDC would construct the Mainline Facilities parallel to the George Parks Highway, on the east side of the highway. The visible portions of the Mainline Facilities would be about 1.4 mile east of KOP 2018-9.

#### **E.1.3.3 Visual Impacts During Construction and Operation**

*Potential impact of the Denali Alternative immediately after construction:* There is potential for low visual contrast from the proposed Denali Alternative (see figures E.1.3-1b and E.1.3-2b in appendix E-1c). The right-of-way is only slightly visible after construction in the center of the view. The prominent features remain the focal point and the right-of-way visual contrast is negligible.

*Potential impact of the Denali Alternative after restoration:* Mitigation measures would reduce the already low visual contrast (see figure E.1.3-1c in appendix E-1c).

#### **E.1.3.4 Mitigation Measures**

Revegetation efforts would reduce any visibility and contrast of the Denali Alternative right-of-way.

### **E.1.4 KOP 2018-10: Railroad above Horseshoe Lake KOP**

#### **E.1.4.1 Affected Visual Environment**

The view is from the bluff edge just above the railroad tracks above Horseshoe Lake; this location approximates the gateway view of park visitors arriving on the train. The view overlooks Horseshoe Lake, entrance area developments, Sugar Loaf Mountain, and Mt. Fellows. The lake, ridgelines, and human-made features add interest to the view. While the NPS publicizes Horseshoe Lake as a hiking destination, this view is only visible by passengers of the train between Denali and Fairbanks. The landscape character type is natural, the scenic quality rating is B, and the view importance rating is 4; therefore, the scenic inventory value is medium.

#### **E.1.4.2 Project Activities Generating Impacts**

AGDC would construct the Mainline Facilities parallel to the George Parks Highway, on the east side of the highway. At its nearest point, where it crosses through McKinley Village, the Mainline Facilities would be about 0.6 mile from KOP 2018-10.

#### **E.1.4.3 Visual Impacts During Construction and Operation**

*Potential impact of Denali Alternative immediately after construction:* There is potential for low visual contrast from the proposed Denali Alternative (see figure E.1.4-1b and 1.4-2b in appendix E-1c). The right-of-way is only slightly visible after construction in the center of the view. Viewers do not spend a lot of time at this location.

*Potential impact of Denali Alternative after restoration:* Mitigation measures would reduce the already low visual contrast (see figure E.1.4-1c in appendix E-1c).

#### **E.1.4.4 Mitigation Measures**

Revegetation efforts would reduce the contrast at this location.

### **E.1.5 KOP 2018-11: Mt. Healy Overlook Trail Summit KOP**

#### **E.1.5.1 Affected Visual Environment**

The view is from the summit of the Mt. Healy Overlook Trail extending from the north end of Sugar Loaf Mountain through the east, south, and southwest to the adjacent peak where the park radio repeater is installed. The view is dominated by ridgelines, the river, and, because of elevation, a grand view of the valley, Park features, and natural landscape character type. The scenic quality rating is B and the view importance rating is 2; therefore, the scenic inventory value is very high.

#### **E.1.5.2 Project Activities Generating Impacts**

AGDC would construct the Mainline Facilities parallel to the George Parks Highway, on the east side of the highway. At its nearest point, where it crosses through McKinley Village, the Mainline Facilities would be about 1.7 miles from KOP 2018-11.

#### **E.1.5.3 Visual Impacts During Construction and Operation**

*Potential impact of the Denali Alternative immediately after construction:* There is potential for moderate visual contrast from the proposed Denali Alternative (see figure E.1.5-1b and E.1.5-2b in appendix E-1c). The strong lines and contrast could draw viewers' attention and detract from the natural elements. The right-of-way is visible extending throughout the view, from a high vantage point, and extending in a direction essentially in line with the view.

*Potential impact of the Denali Alternative after restoration:* Mitigation measures would reduce the moderate visual contrast and would make the right-of-way indistinguishable from the George Parks Highway and Alaska Railroad (see figure E.1.5-1c in appendix E-1c).

#### **E.1.5.4 Mitigation Measures**

Revegetation efforts would reduce the visibility and contrast of the Denali Alternative right-of-way.

## **E.1.6 KOP 2018-12: Triple Lakes Trail KOP**

### **E.1.6.1 Affected Visual Environment**

The view is from the Triple Lakes Trail approximately 0.4 mile from the southern trailhead, looking north to northeast toward Mt. Fellows, Sugar Loaf Mountain, and the Nenana River below. Hikers pause briefly at this location where the vegetation opens naturally. Ridgelines, peaks, cut banks, bluffs, and the river add interest to the view. The trail is well publicized in park publications with some commercial guided hiking. Less than one-third of park visitors hike to this viewpoint. The landscape character type is natural, the scenic quality rating is B, and the view importance rating is 3; therefore, the scenic inventory value is high.

### **E.1.6.2 Project Activities Generating Impacts**

AGDC would construct the Mainline Facilities parallel to the George Parks Highway, on the east side of the highway. At its nearest point, the Mainline Facilities would be about 2.9 miles from KOP 2018-12.

### **E.1.6.3 Visual Impacts During Construction and Operation**

*Potential impact of the Denali Alternative immediately after construction:* There is no potential for visual contrast from the proposed Denali Alternative (see figure E.1.6-1b and E.1.6-2b in appendix E-1c). The right-of-way is not visible from this location.

*Potential impact of the Denali Alternative after restoration:* There is no potential for visual contrast from the proposed Denali Alternative (see figure E.1.6-1c in appendix E-1c). The right-of-way is not visible from this location.

### **E.1.6.4 Mitigation Measures**

No mitigation measures are proposed for this KOP.

## **E.1.7 KOP 2018-13: Nenana River Pedestrian Bridge KOP**

### **E.1.7.1 Affected Visual Environment**

The view looks northwest, north, east, and south from the trail leading to the Nenana River pedestrian bridge north of the park entrance. The view includes Healy Ridge, the Nenana River, surrounding hills, gateway hotels and businesses, the George Parks highway, the vehicle bridge, and the pedestrian bridge. Mountains, river, and some human-made features add interest to the view. The pedestrian bridge is occasionally noted as the trail entrance to the park. Most park visitors pass through this area; some stop for the view from the bridge or the nearby benches. Most park visitors are driving, walking, or biking through this area. The landscape character type is natural, the scenic quality rating is C, and the view importance rating is 4; therefore, the scenic inventory value is low.

### **E.1.7.2 Project Activities Generating Impacts**

AGDC would construct the Mainline Facilities for the Denali Alternative underneath the pedestrian bridge, and adjacent to the pedestrian path on both sides of the Nenana River.

### **E.1.7.3 Visual Impacts During Construction and Operation**

*Potential impact of the Denali Alternative immediately after construction:* There is potential for high visual contrast from the proposed Denali Alternative (see figure E.1.7-1b and E.1.7-2b in appendix E-1c). The removal of trees and vegetation to construct the right-of-way and relocate/redesign the multi-use trail would affect the view at this location.

*Potential impact of the Denali Alternative after restoration:* Mitigation measures would reduce the visual contrast and would restore the multi-use trail (see figure E.1.7-1c in appendix E-1c).

### **E.1.7.4 Mitigation Measures**

Revegetation efforts would reduce the visibility and contrast of the Denali Alternative right-of-way.

## **E.1.8 KOP 2018-14: George Parks Highway Milepost 236 KOP**

### **E.1.8.1 Affected Visual Environment**

The view is from the George Parks Highway south of milepost 236 where the railroad tracks are very close to the highway. The view is of Mt. Healy, Sugar Loaf Mountain, Mount Fellows, Pyramid Mountain, and distant peaks. The view includes tree line, interesting ridgelines, and escarpments. The George Parks Highway is publicized as a Scenic Byway and there is routine highway maintenance in this area. Park visitors pass this location on the highway or the railroad. The landscape character type is natural, the scenic quality rating is B, and the view importance rating is 4; therefore, the scenic inventory value is medium.

### **E.1.8.2 Project Activities Generating Impacts**

AGDC would construct the Mainline Facilities parallel to the George Parks Highway, on the east side of the highway. The Mainline Facilities would be immediately adjacent to KOP 2018-14.

### **E.1.8.3 Visual Impacts During Construction and Operation**

*Potential impact of the Denali Alternative immediately after construction:* There is potential for moderate visual contrast from the proposed Denali Alternative (see figure E.1.8-1b and E.1.8-2b in appendix E-1c). The removal of trees and vegetation to construct the right-of-way near the Alaska Railroad and near the George Parks Highway would affect the view at this location. Viewers do not spend a lot of time at this location and there are no prominent features, other than in the background, in the view.

*Potential impact of the Denali Alternative after restoration:* Mitigation measures would reduce the visual contrast (see figure E.1.8-1c in appendix E-1c); however, the cleared right-of-way would still be visible.

### **E.1.8.4 Mitigation Measures**

Revegetation efforts would reduce the visibility and contrast of the Denali Alternative right-of-way for viewers passing the location.

**APPENDIX E-1b**

**Denali Alternative –  
Maps of Key Observation Points**

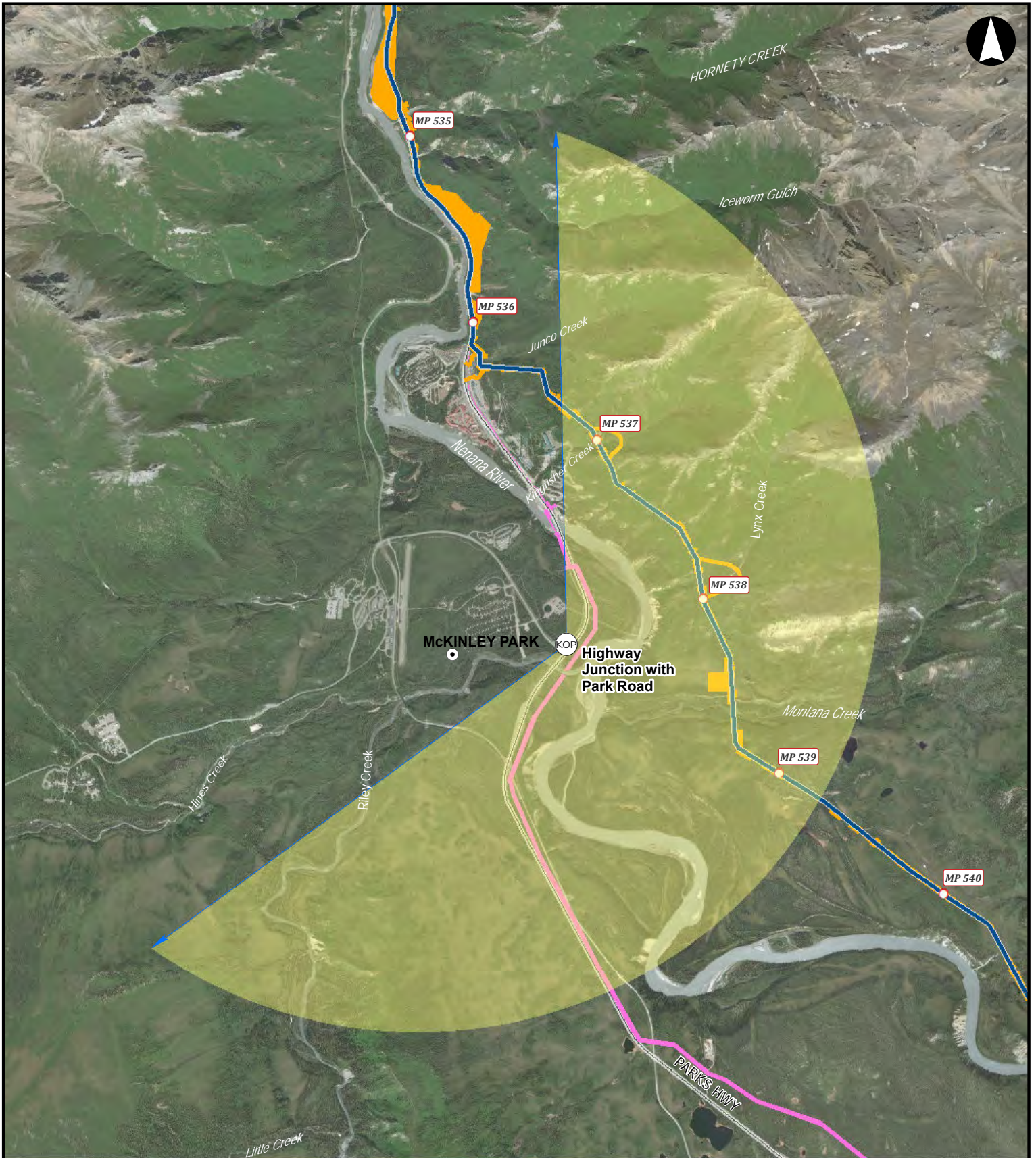
## APPENDIX E-1b: MAPS OF KEY OBSERVATION POINTS

---

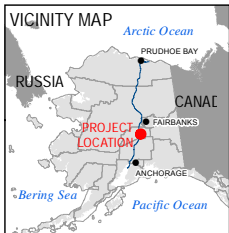
### Table of Figures

Figure E.1-1	KOP 2018-8: Denali Park Road Key Observation Point Aerial .....	E-7
Figure E.1-2	KOP 2018-8: Denali Park Road Key Observation Point Topography.....	E-8
Figure E.1-3	KOP 2018-9: Government Hill Key Observation Point Aerial .....	E-9
Figure E.1-4	KOP 2018-9: Government Hill Key Observation Point Topography.....	E-10
Figure E.1-5	KOP 2018-10: Railroad Above Horseshoe Lake Key Observation Point Aerial .....	E-11
Figure E.1-6	KOP 2018-10: Railroad Above Horseshoe Lake Key Observation Point Topography .....	E-12
Figure E.1-7	KOP 2018-11: Mt. Healy Overlook Trail Summit Key Observation Point Aerial .....	E-13
Figure E.1-8	KOP 2018-11: Mt. Healy Overlook Trail Summit Key Observation Point Topography .....	E-14
Figure E.1-9	KOP 2018-12: Triple Lakes Trail Key Observation Point Aerial.....	E-15
Figure E.1-10	KOP 2018-12: Triple Lakes Trail Key Observation Point Topography .....	E-16
Figure E.1-11	KOP 2018-13: Nenana River Pedestrian Bridge Key Observation Point Aerial .....	E-17
Figure E.1-12	KOP 2018-13: Nenana River Pedestrian Bridge Key Observation Point Topography .....	E-18
Figure E.1-13	KOP 2018-14: South of George Parks Highway Key Observation Point Aerial.....	E-19
Figure E.1-14	KOP 2018-14: South of George Parks Highway Key Observation Point Topography.....	E-20

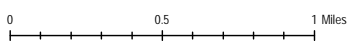




This information is for environmental review purposes only.



- LEGEND**
- Place of Interest
  - Alaska LNG Rev C2 Milepost
  - Alaska LNG Rev C2 Route
  - FERC Footprint
  - DNPP Alternative ROW
  - ⊙ (KOP) Key Observation Point (KOP)
  - KOP View Bearing
  - KOP View Cone

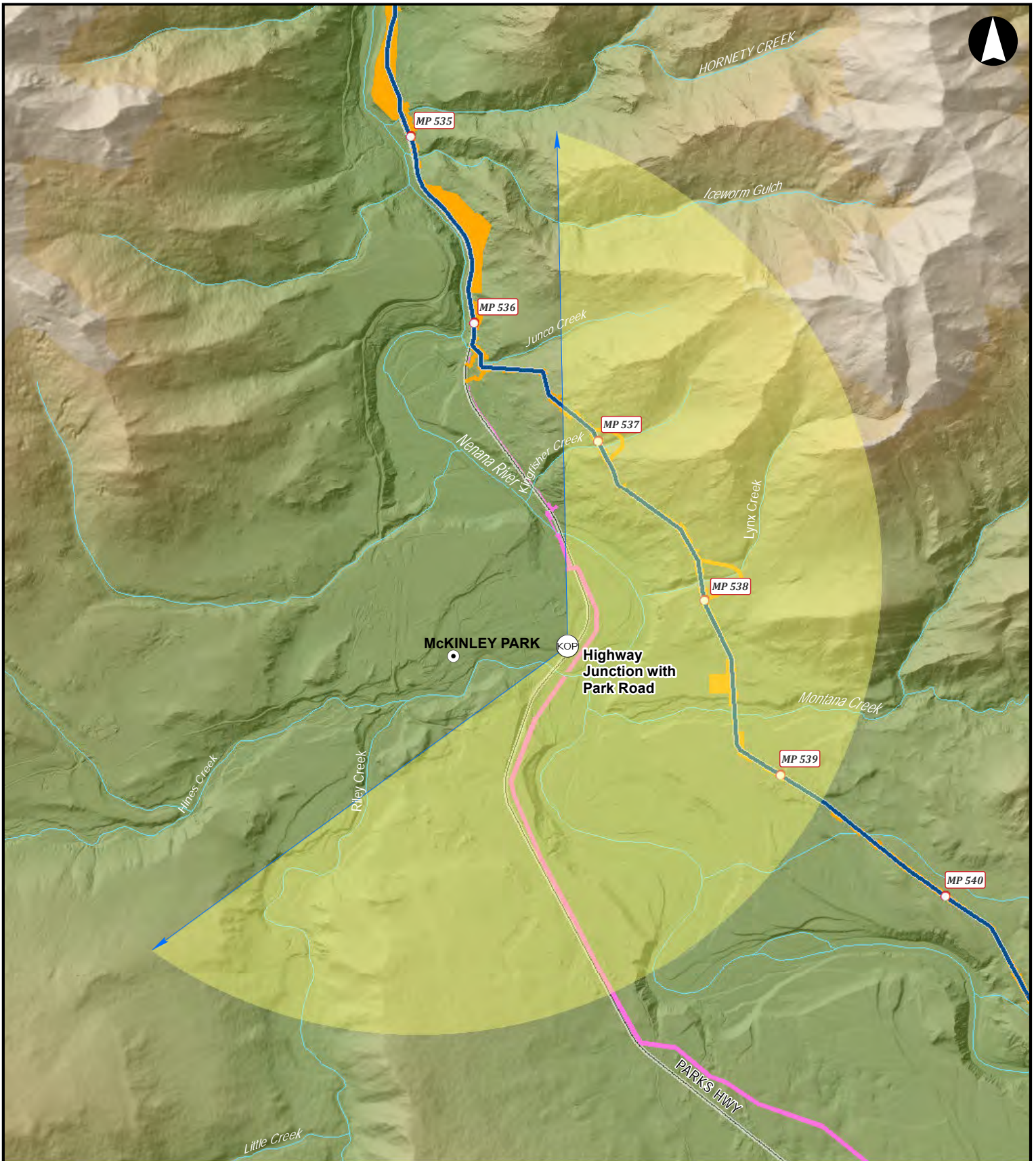


E-7

SCALE: 1:40,000 DATE: 2018-08-07

**Figure E.1-1**  
**Denali Alternative**  
 Denali Park Road  
 Key Observation Point  
 Aerial Map

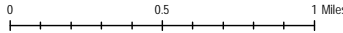




This information is for environmental review purposes only.



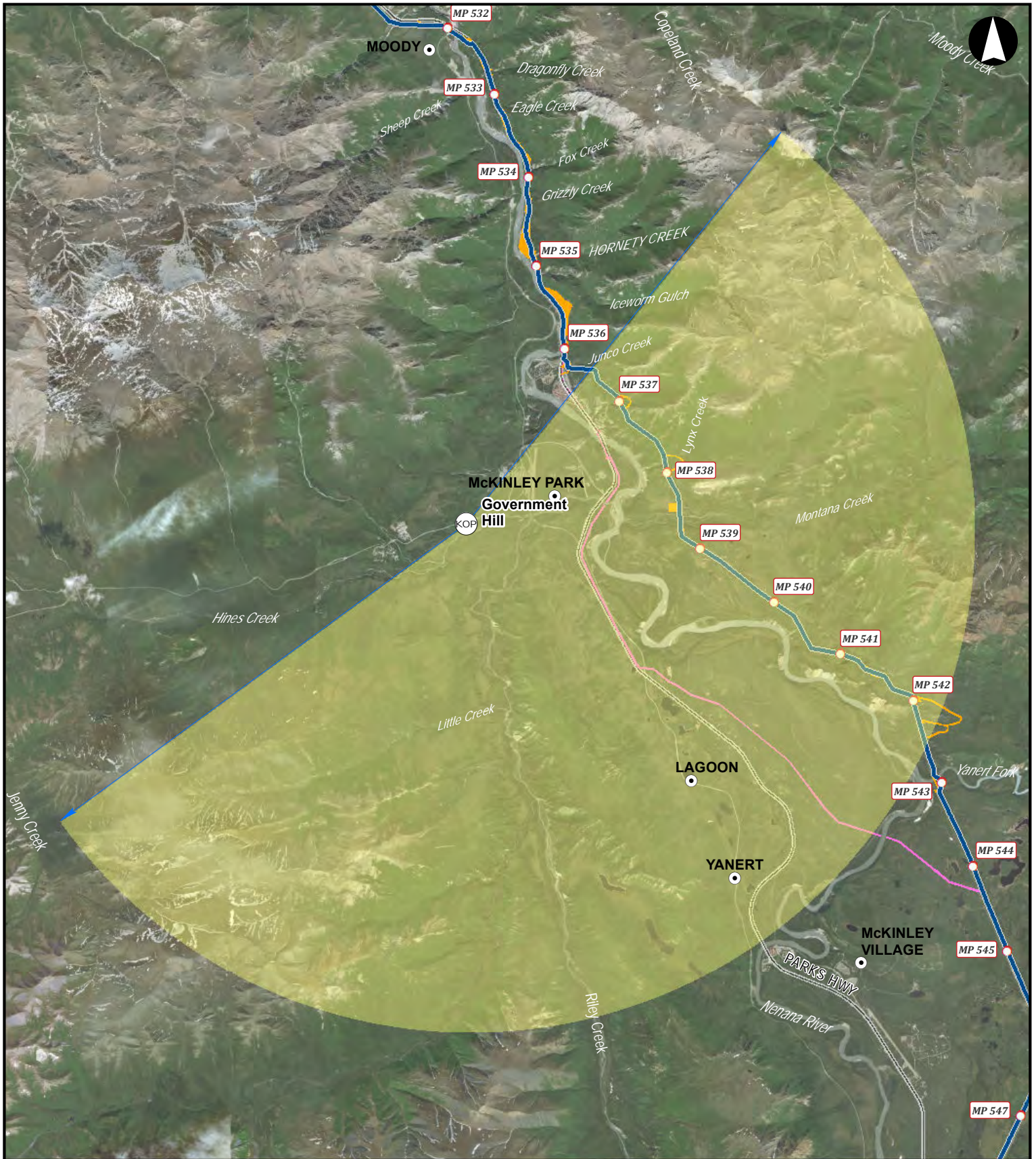
- LEGEND**
- Place of Interest
  - Alaska LNG Rev C2 Milepost
  - Alaska LNG Rev C2 Route
  - FERC Footprint
  - DNPP Alternative ROW
  - ⊙ (KOP) Key Observation Point (KOP)
  - (KOP) KOP View Bearing
  - ⬆ (KOP) KOP View Cone



E-8 SCALE: 1:40,000 DATE: 2018-08-07

**Figure E.1-2**  
**Denali Alternative**  
 Denali Park Road  
 Key Observation Point  
 Topographic Map





**LEGEND**

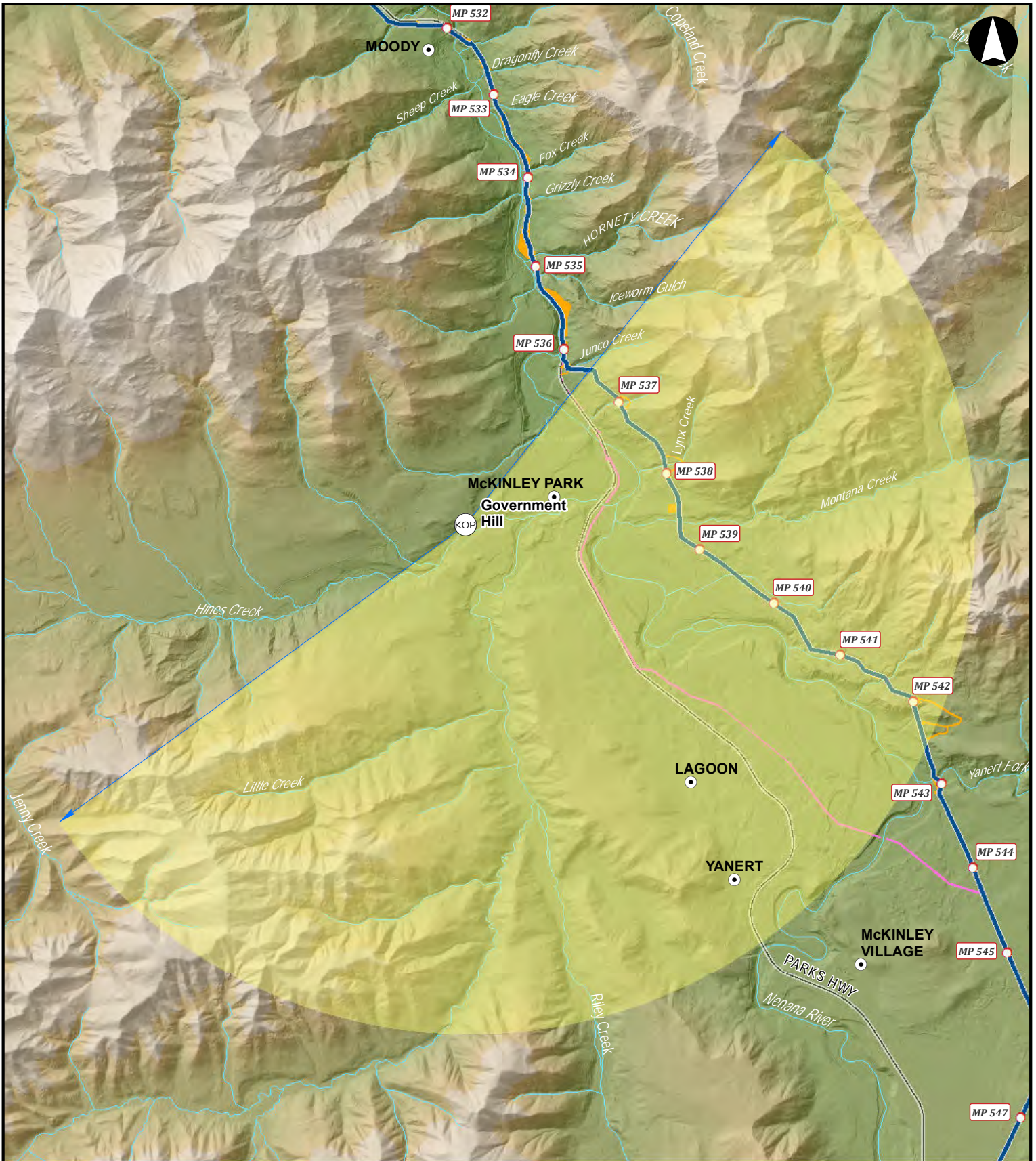
- Place of Interest
- Alaska LNG Rev C2 Milepost
- Alaska LNG Rev C2 Route
- FERC Footprint
- DNPP Alternative ROW
- ⊙ (KOP) Key Observation Point (KOP)
- ➔ KOP View Bearing
- (Yellow) KOP View Cone

0 0.5 1 Miles

This information is for environmental review purposes only.

**Figure E.1-3**  
**Denali Alternative**  
 Government Hill  
 Key Observation Point  
 Aerial Map

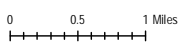




This information is for environmental review purposes only.

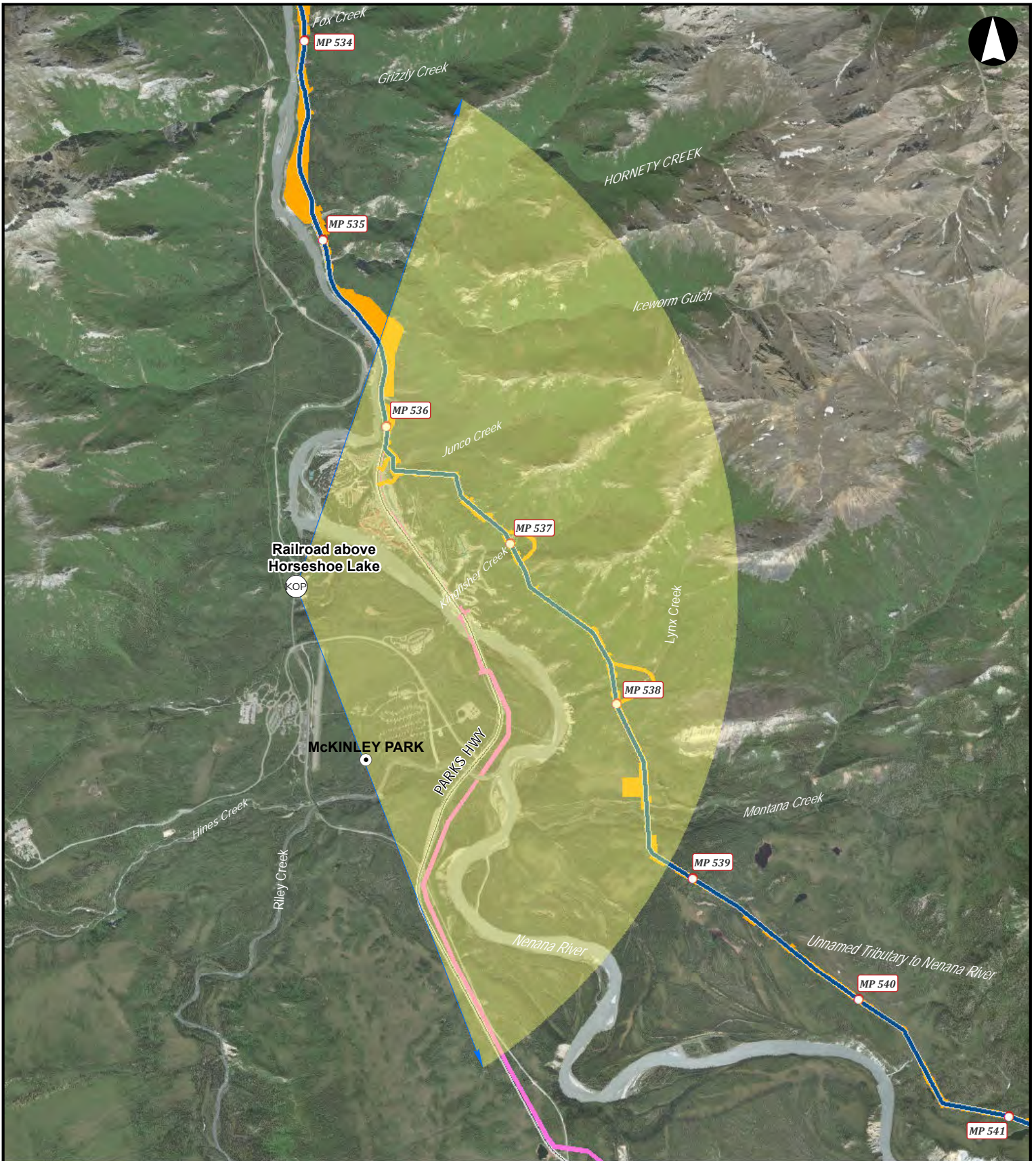


- LEGEND**
- Place of Interest
  - Alaska LNG Rev C2 Milepost
  - Alaska LNG Rev C2 Route
  - FERC Footprint
  - DNPP Alternative ROW
  - ⊙ (KOP) Key Observation Point (KOP)
  - KOP View Bearing
  - KOP View Cone

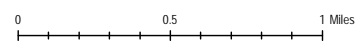


**Figure E.1-4**  
**Denali Alternative**  
**Government Hill**  
**Key Observation Point**  
**Topographic Map**





- LEGEND**
- Place of Interest
  - Alaska LNG Rev C2 Milepost
  - Alaska LNG Rev C2 Route
  - FERC Footprint
  - DNPP Alternative ROW
  - ⊙ (KOP) Key Observation Point (KOP)
  - KOP View Bearing
  - KOP View Cone



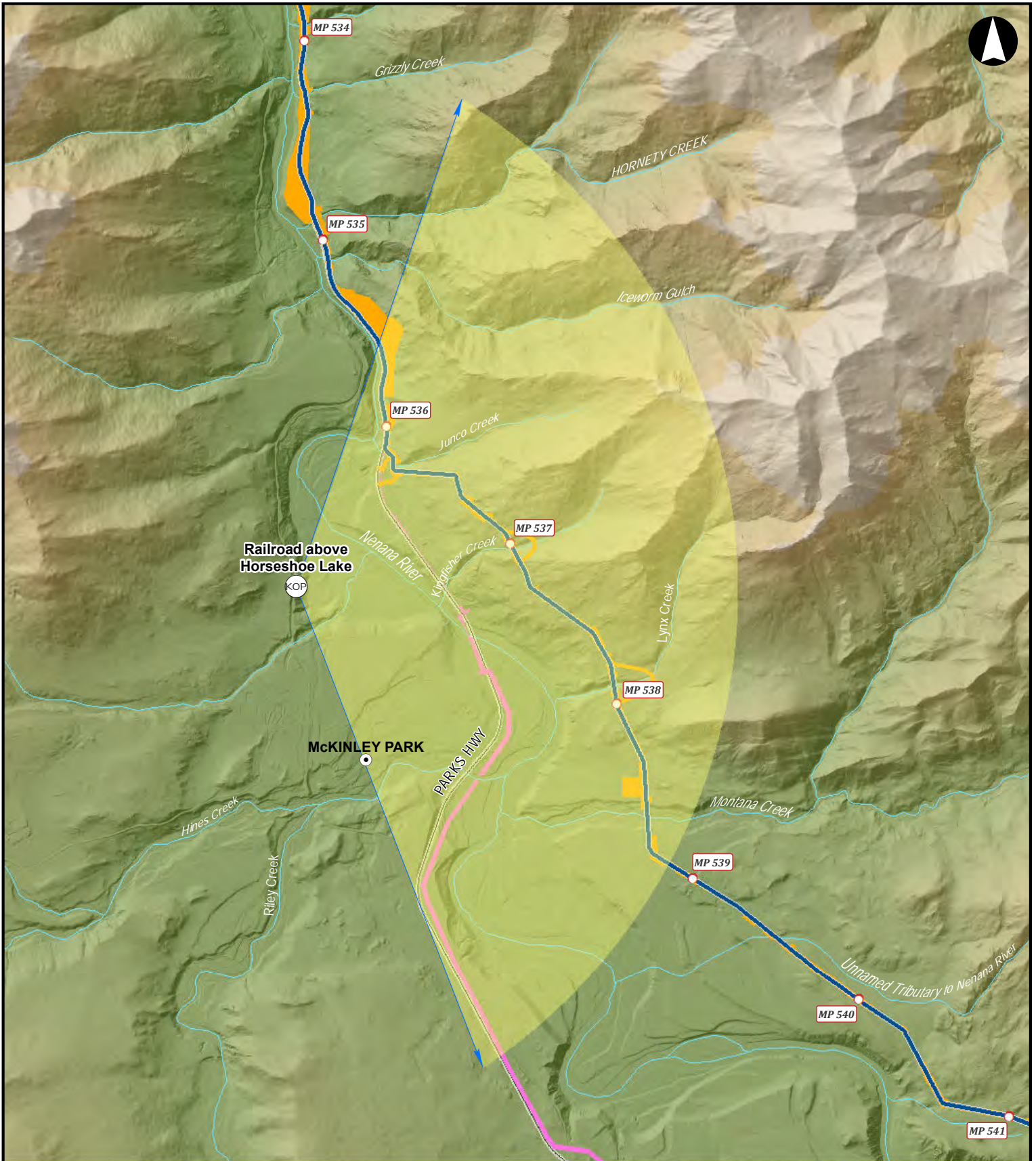
E-11

SCALE: 1:40,000 DATE: 2018-08-07

This information is for environmental review purposes only.

**Figure E.1-5**  
**Denali Alternative**  
 Railroad Above Horseshoe Lake  
 Key Observation Point  
 Aerial Map

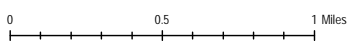




This information is for environmental review purposes only.

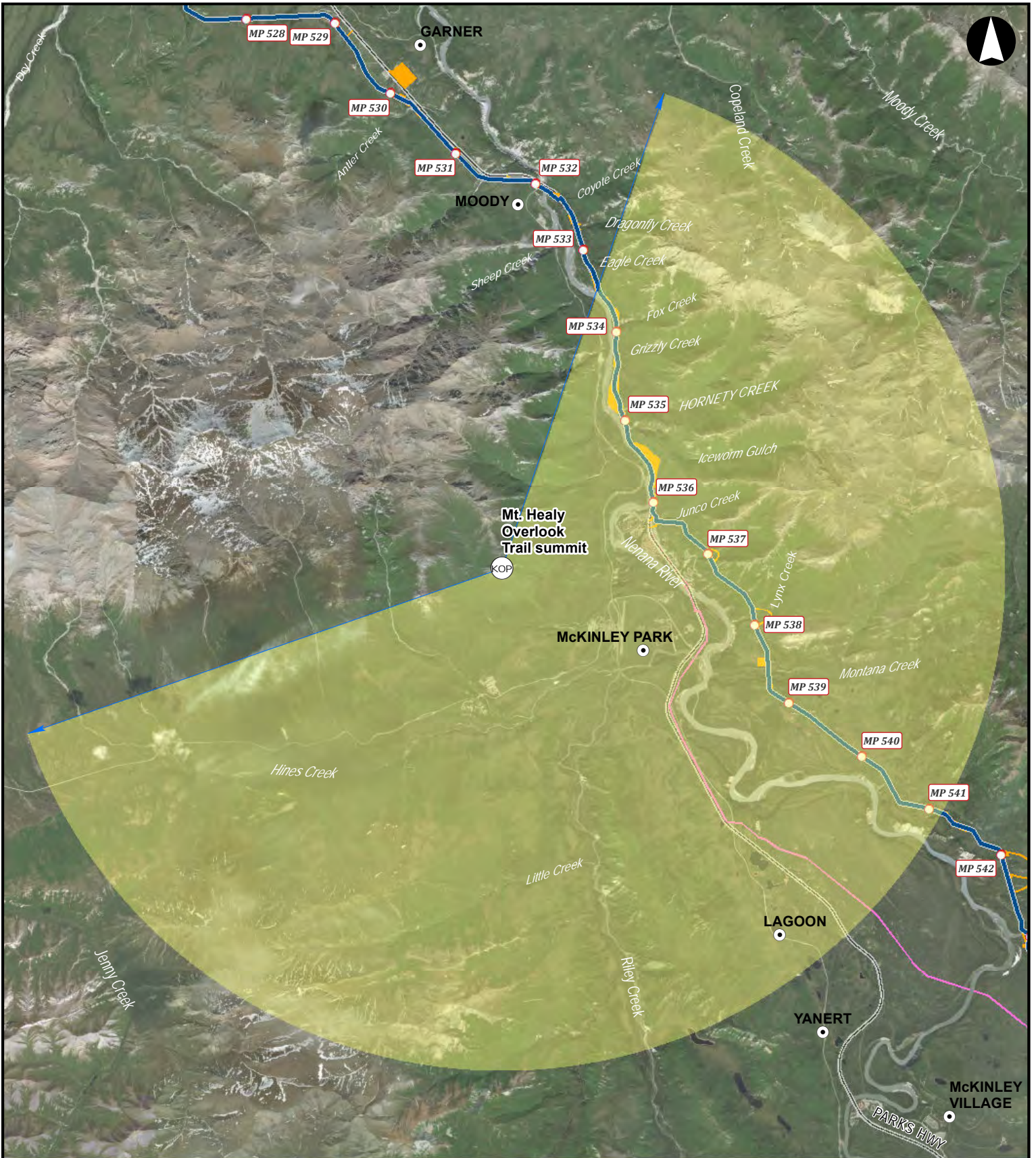


- LEGEND**
- Place of Interest
  - Alaska LNG Rev C2 Milepost
  - Alaska LNG Rev C2 Route
  - FERC Footprint
  - DNPP Alternative ROW
  - ⊙ Key Observation Point (KOP)
  - KOP View Bearing
  - KOP View Cone



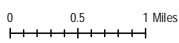
**Figure E.1-6**  
**Denali Alternative**  
 Railroad Above Horseshoe Lake  
 Key Observation Point  
 Topographic Map





**LEGEND**

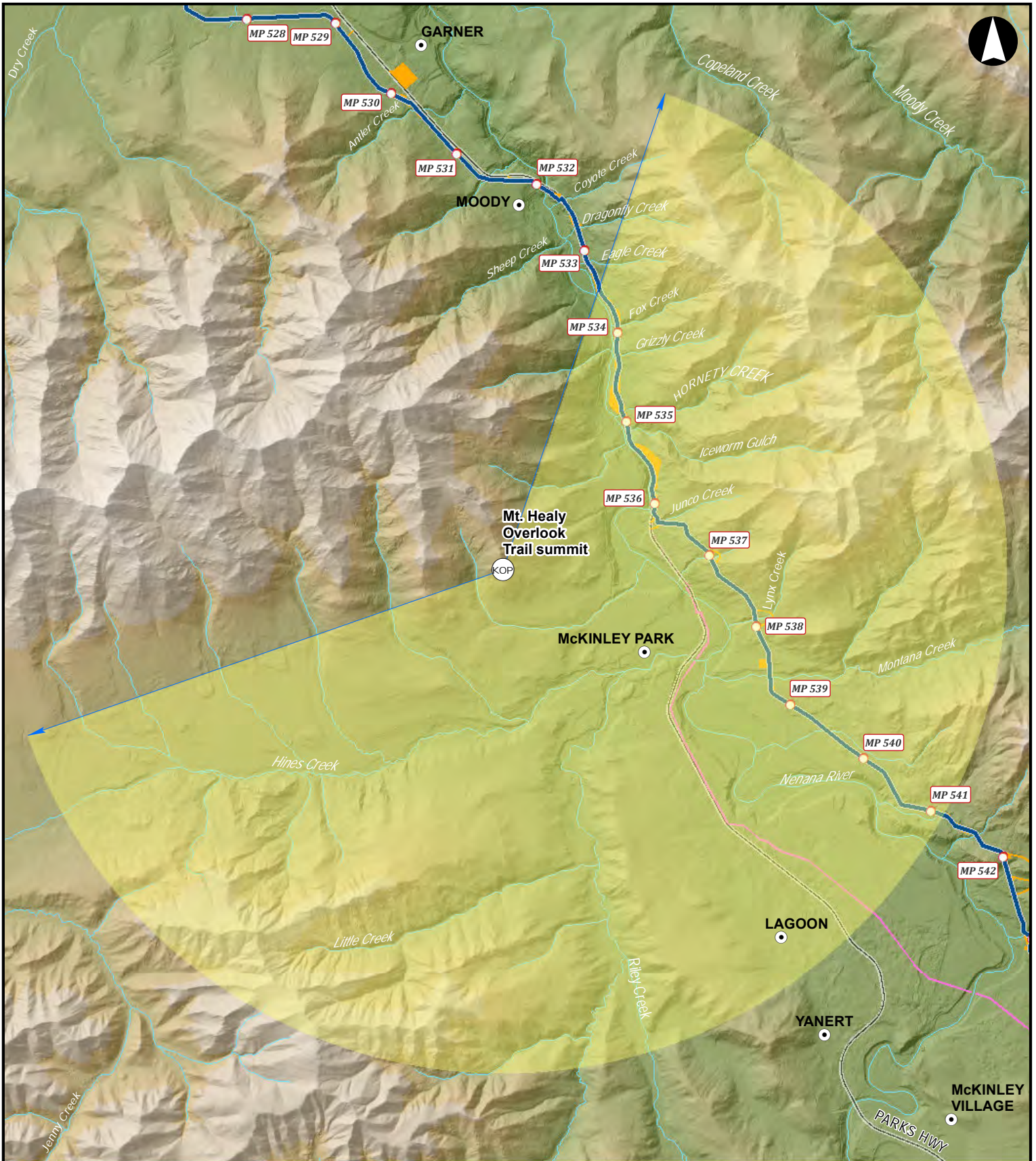
- Place of Interest
- Alaska LNG Rev C2 Milepost
- Alaska LNG Rev C2 Route
- FERC Footprint
- DNPP Alternative ROW
- (KOP) Key Observation Point (KOP)
- KOP View Bearing
- KOP View Cone



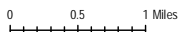
*This information is for environmental review purposes only.*

**Figure E.1-7**  
**Denali Alternative**  
 Mt. Healy Overlook Trail Summit  
 Key Observation Point  
 Aerial Map





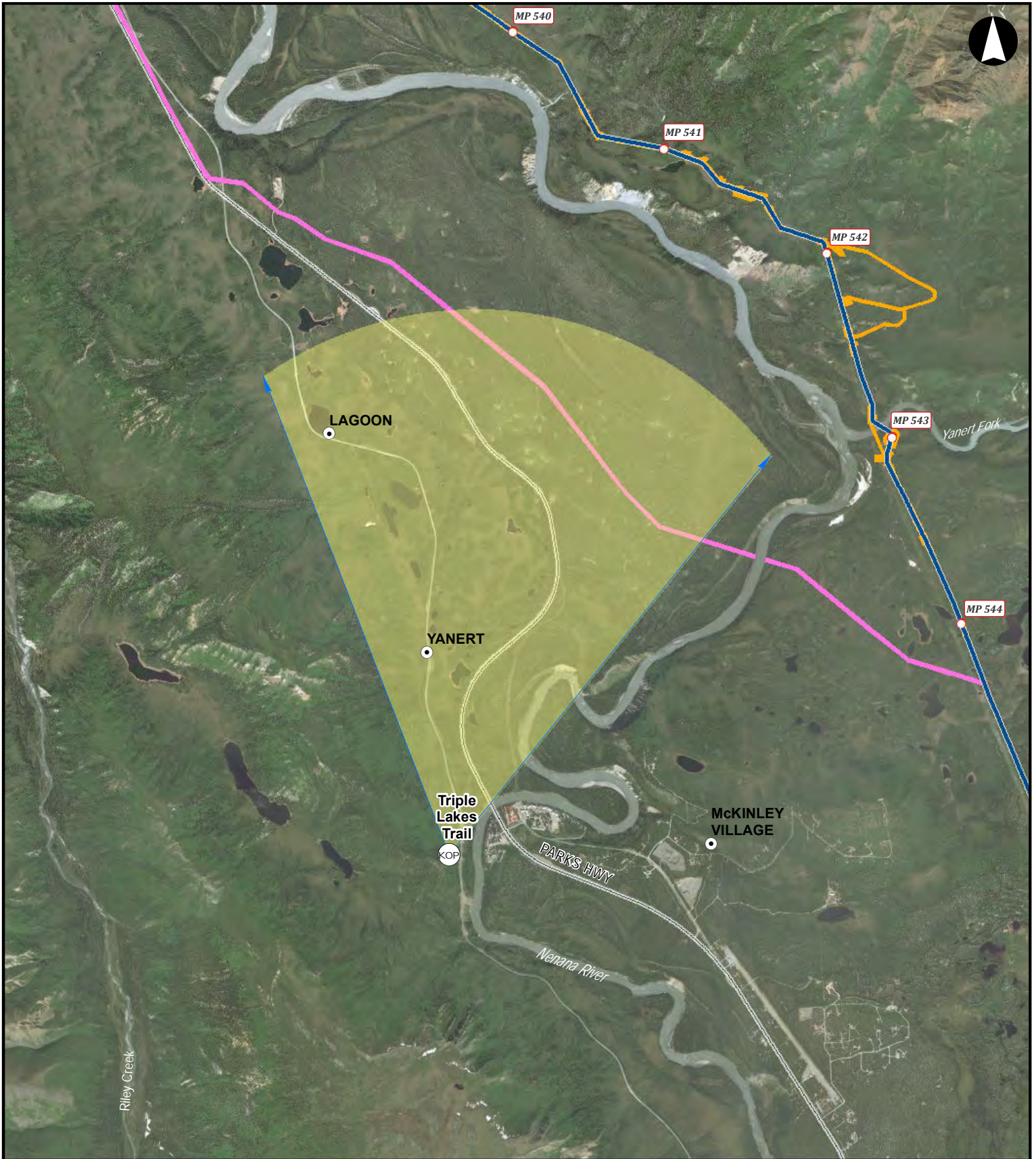
- LEGEND**
- Place of Interest
  - Alaska LNG Rev C2 Milepost
  - Alaska LNG Rev C2 Route
  - FERC Footprint
  - DNPP Alternative ROW
  - ⊙ (KOP) Key Observation Point (KOP)
  - KOP View Bearing
  - KOP View Cone



This information is for environmental review purposes only.

**Figure E.1-8**  
**Denali Alternative**  
**Mt. Healy Overlook Trail Summit**  
**Key Observation Point**  
**Topographic Map**

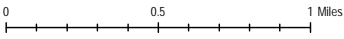




This information is for environmental review purposes only.



- LEGEND**
- Place of Interest
  - Alaska LNG Rev C2 Milepost
  - Alaska LNG Rev C2 Route
  - FERC Footprint
  - DNPP Alternative ROW
  - ⊙ (KOP) Key Observation Point (KOP)
  - KOP View Bearing
  - KOP View Cone

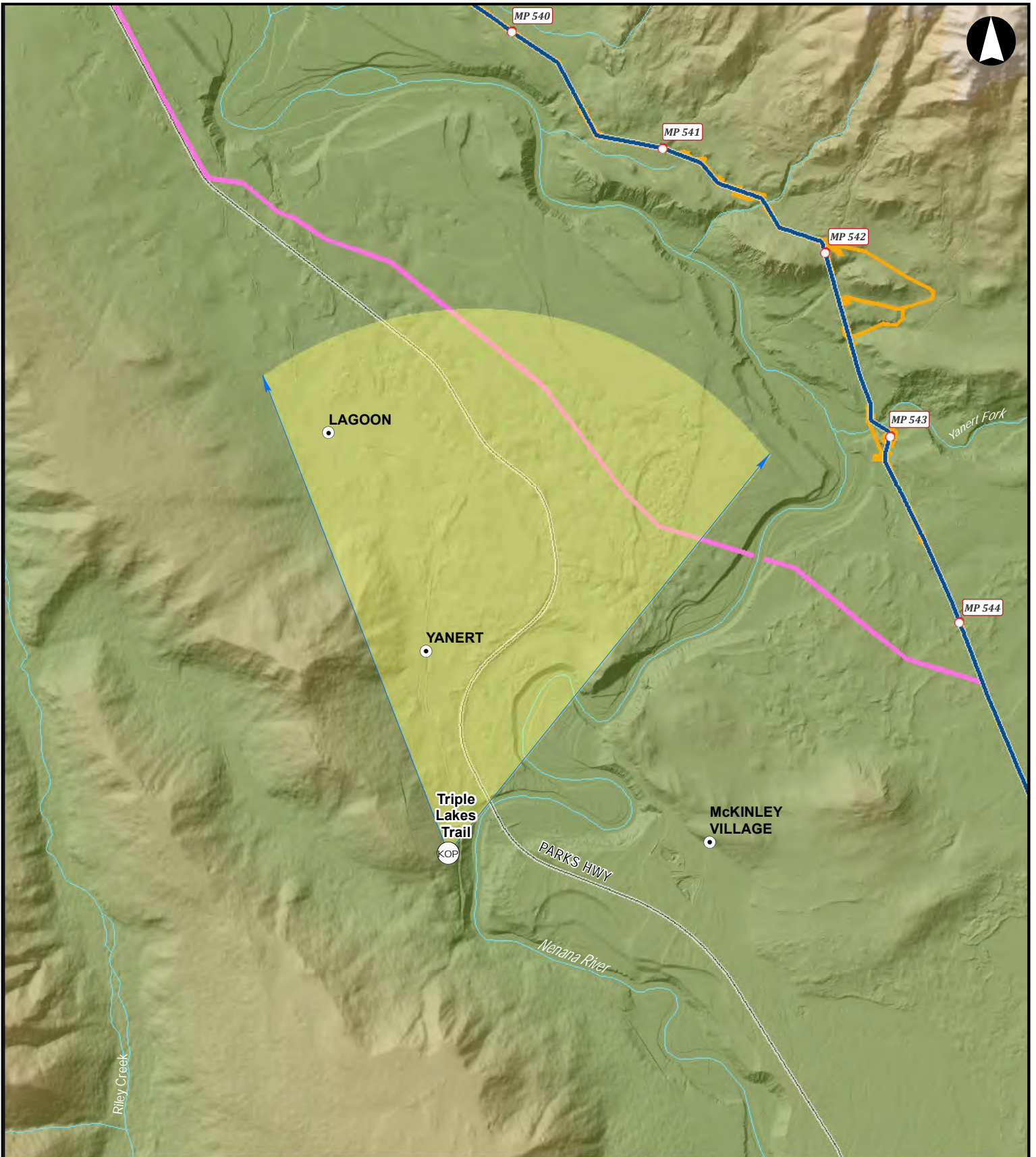


E-15 SCALE: 1:40,000

DATE: 2018-08-07

**Figure E.1-9**  
**Denali Alternative**  
 Triple Lakes Trail  
 Key Observation Point  
 Aerial Map

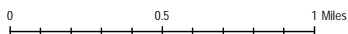




This information is for environmental review purposes only.



- LEGEND**
- Place of Interest
  - Alaska LNG Rev C2 Milepost
  - Alaska LNG Rev C2 Route
  - FERC Footprint
  - DNPP Alternative ROW
  - ⊙ Key Observation Point (KOP)
  - KOP View Bearing
  - KOP View Cone

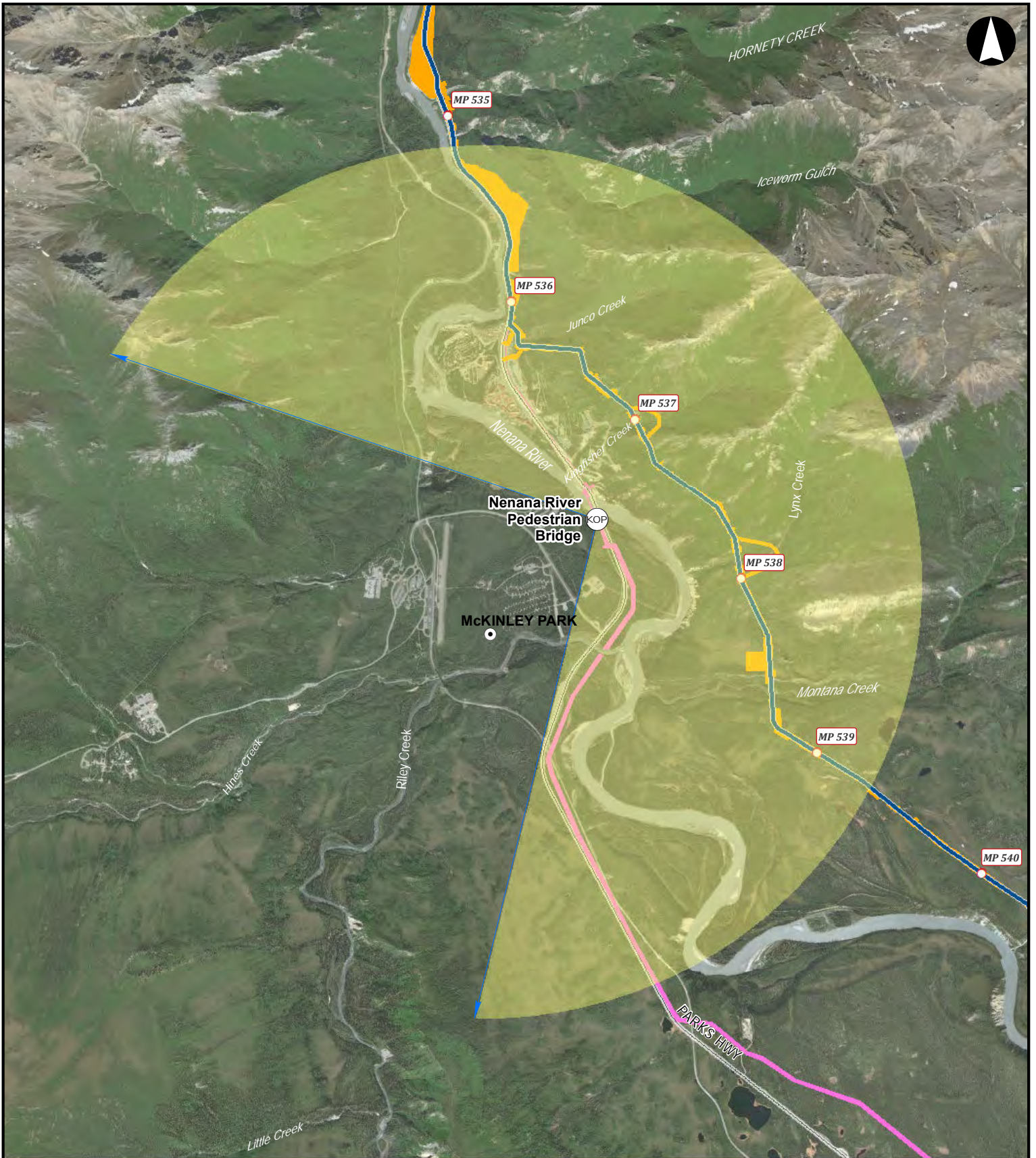


E-16 SCALE: 1:40,000

DATE: 2018-08-07

**Figure E.1-10**  
**Denali Alternative**  
 Triple Lakes Trail  
 Key Observation Point  
 Topographic Map



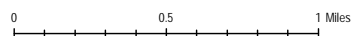


This information is for environmental review purposes only.



**LEGEND**

- Place of Interest
- Alaska LNG Rev C2 Milepost
- Alaska LNG Rev C2 Route
- FERC Footprint
- DNPP Alternative ROW
- ⊙ (KOP) Key Observation Point (KOP)
- KOP View Bearing
- KOP View Cone



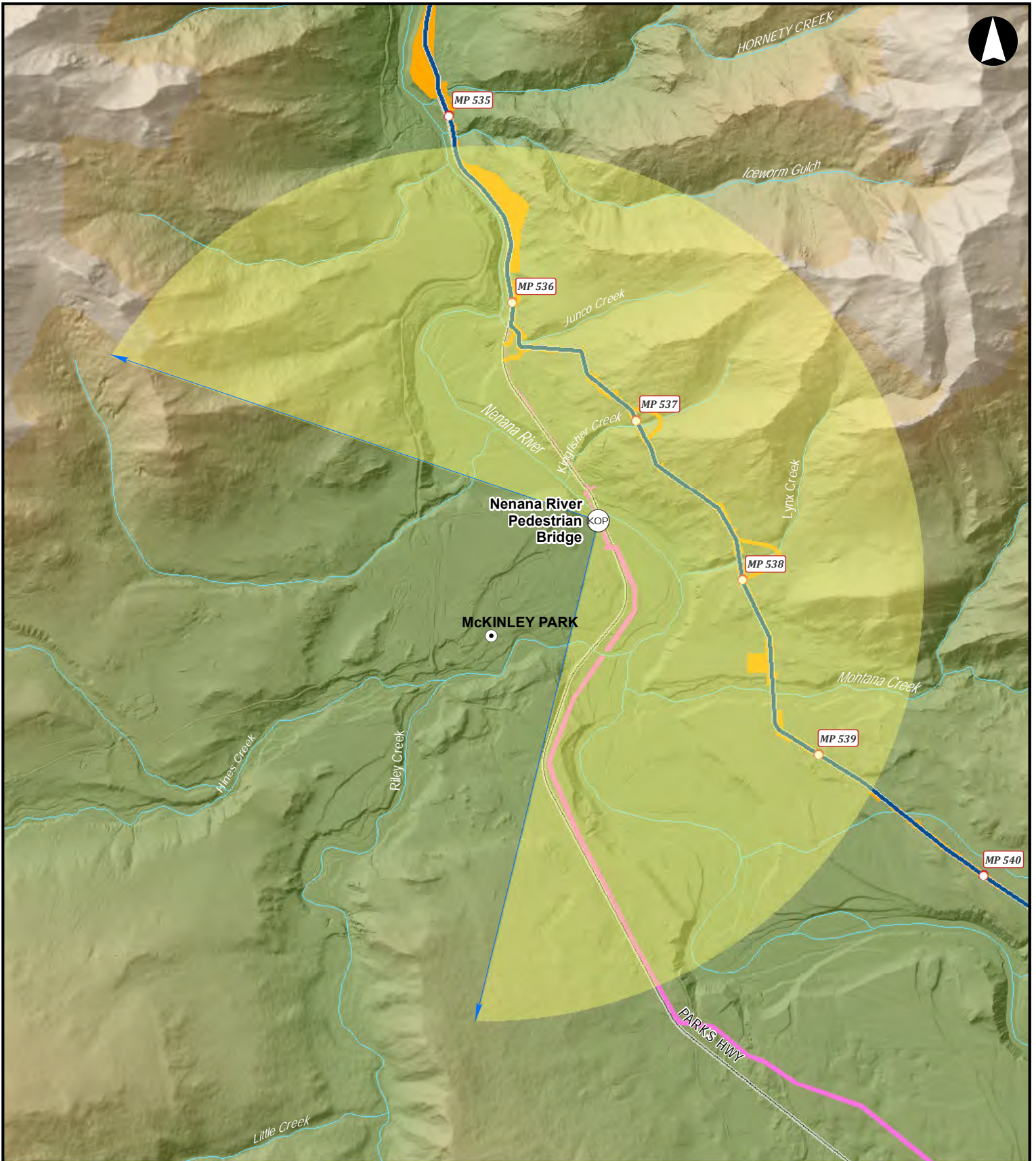
E-17

SCALE: 1:40,000

DATE: 2018-08-07

**Figure E.1-11**  
**Denali Alternative**  
 Nenana River Pedestrian Bridge  
 Key Observation Point  
 Aerial Map



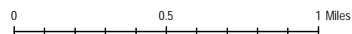


This information is for environmental review purposes only.



**LEGEND**

- Place of Interest
- Key Observation Point (KOP)
- Alaska LNG Rev C2 Milepost
- Alaska LNG Rev C2 Route
- KOP View Bearing
- FERC Footprint
- DNPP Alternative ROW
- KOP View Cone

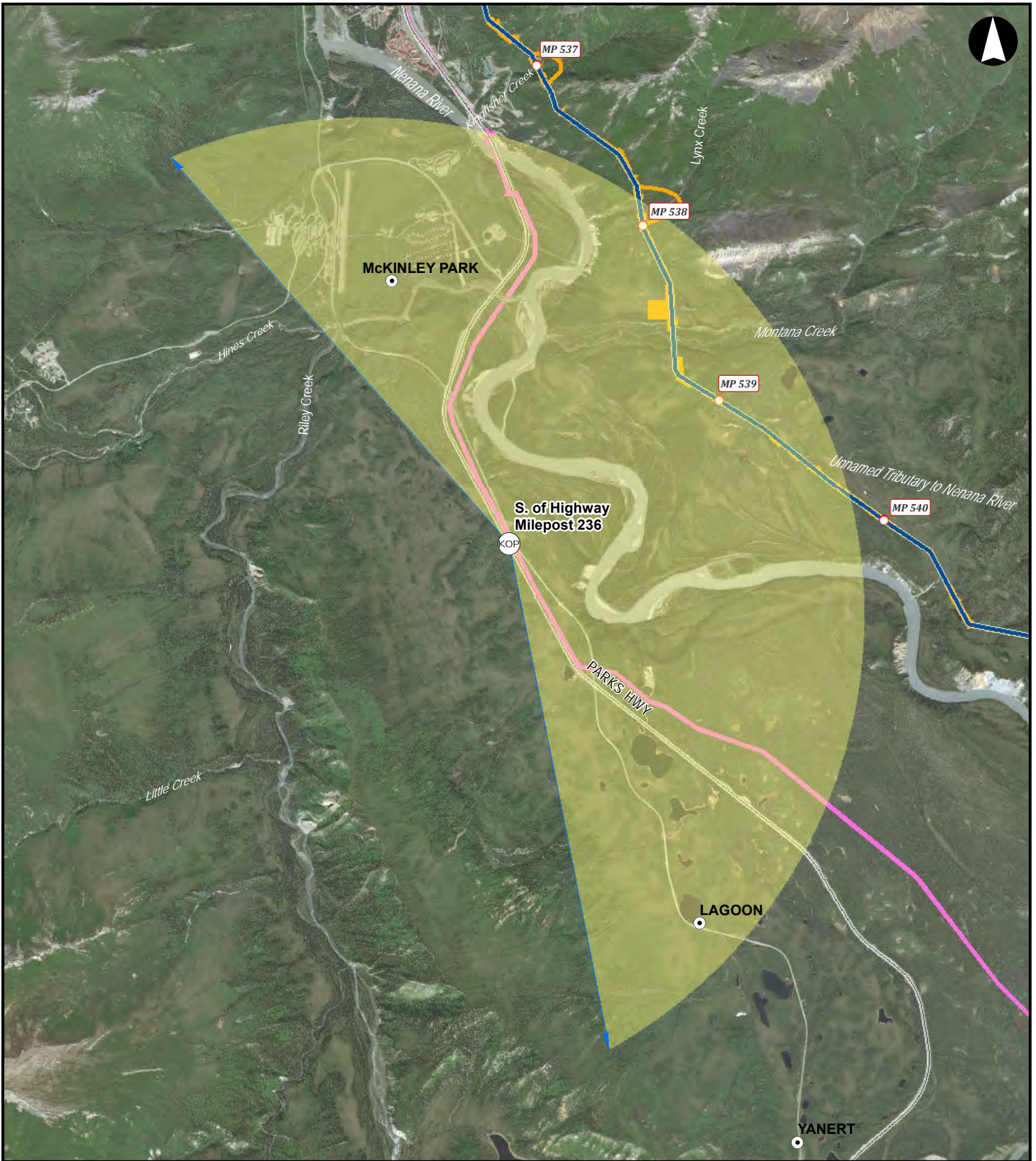


E-18  
SCALE: 1:40,000

DATE: 2018-08-07

**Figure E.1-12**  
**Denali Alternative**  
**Nenana River Pedestrian Bridge**  
**Key Observation Point**  
**Topographic Map**

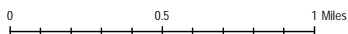




This information is for environmental review purposes only.



- LEGEND**
- Place of Interest
  - Alaska LNG Rev C2 Milepost
  - Alaska LNG Rev C2 Route
  - FERC Footprint
  - DNPP Alternative ROW
  - ⊙ Key Observation Point (KOP)
  - KOP View Bearing
  - KOP View Cone

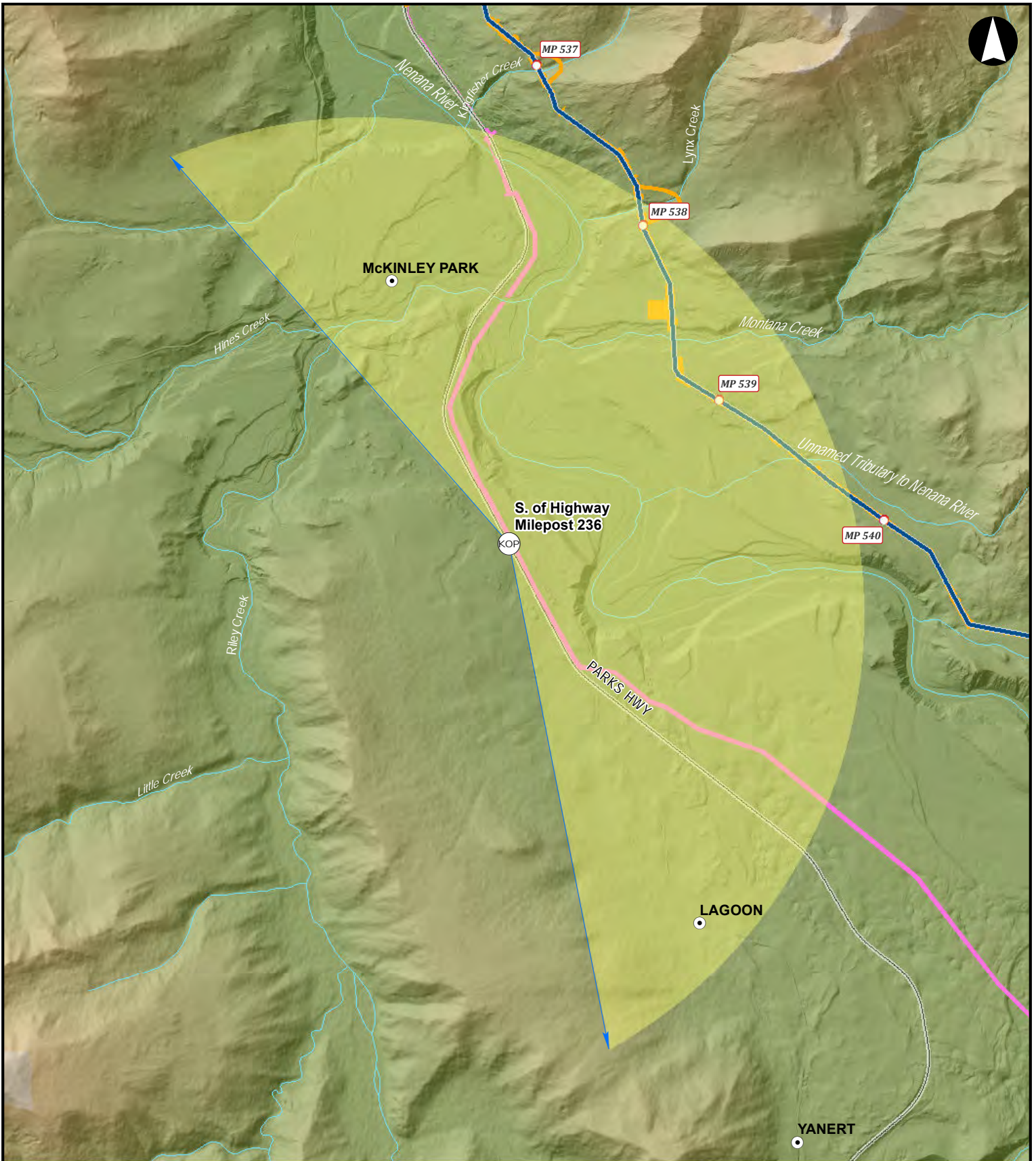


E-19 SCALE: 1:40,000

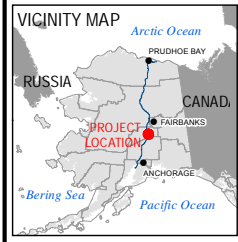
DATE: 2018-08-07

**Figure E.1-13**  
**Denali Alternative**  
 South of George Parks Highway  
 Key Observation Point  
 Aerial Map

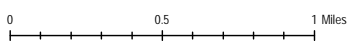




This information is for environmental review purposes only.



- LEGEND**
- Place of Interest
  - Alaska LNG Rev C2 Milepost
  - Alaska LNG Rev C2 Route
  - FERC Footprint
  - DNPP Alternative ROW
  - ⊙ Key Observation Point (KOP)
  - KOP View Bearing
  - KOP View Cone



E-20

SCALE: 1:40,000

DATE: 2018-08-07

**Figure E.1-14**  
**Denali Alternative**  
 South of George Parks Highway  
 Key Observation Point  
 Topographic Map

**APPENDIX E-1c**

**Denali Alternative –  
Existing Conditions and Visual Simulation Imagery for Key Observation Points**

## **APPENDIX E-1c: DENALI ALTERNATIVE – EXISTING CONDITIONS AND VISUAL SIMULATION IMAGERY FOR KEY OBSERVATION POINTS**

---

### **List of Figures**

Figure E.1.2-1	Intersection of George Parks Highway and the DNPP Park Road Simulations.....	<b>E-21</b>
Figure E.1.2-2	Intersection of George Parks Highway and the DNPP Park Road Winter Simulations.....	<b>E-22</b>
Figure E.1.3-1	Government Hill Simulations .....	<b>E-23</b>
Figure E.1.3-2	Government Hill Winter Simulations .....	<b>E-25</b>
Figure E.1.4-1	Railroad Above Horseshoe Lake Simulations .....	<b>E-26</b>
Figure E.1.4-2	Railroad Above Horseshoe Lake Winter Simulations .....	<b>E-27</b>
Figure E.1.5-1	Mt. Healy Overlook Trail Summit Simulations .....	<b>E-28</b>
Figure E.1.5-2	Mt. Healy Overlook Trail Summit Winter Simulations.....	<b>E-29</b>
Figure E.1.6-1	Triple Lakes Trail Simulations.....	<b>E-30</b>
Figure E.1.6-2	Triple Lakes Trail Winter Simulations .....	<b>E-32</b>
Figure E.1.7-1	Nenana River Pedestrian Bridge Simulations .....	<b>E-33</b>
Figure E.1.7-2	Nenana River Pedestrian Bridge Winter Simulations .....	<b>E-34</b>
Figure E.1.8-1	George Parks Highway MP 236 Simulations.....	<b>E-36</b>
Figure E.1.8-2	George Parks Highway MP 236 Winter Simulations.....	<b>E-37</b>



**Figure E.1.2-1. Intersection of George Parks Highway and the DNPP Park Road Simulations; View of the Denali Alternative to the East**

**a. Existing Conditions**



**b. After Construction**



**c. After Reclamation**



**Figure E.1.2-2 Intersection of George Parks Highway and the DNPP Park Road Winter Simulations; View of the Denali Alternative to the East**

E-22

**a. Existing Conditions**





**b. After Construction**



**Figure E.1.3-1 Government Hill Simulations; View of the Denali Alternative to the East and Southeast**

**a. Existing Conditions**





**b. After Construction**



**c. After Reclamation**





**Figure E.1.3-2 Government Hill Winter Simulations; View of the Denali Alternative to the East and Southeast**

**a. Existing Conditions**



**b. After Construction**

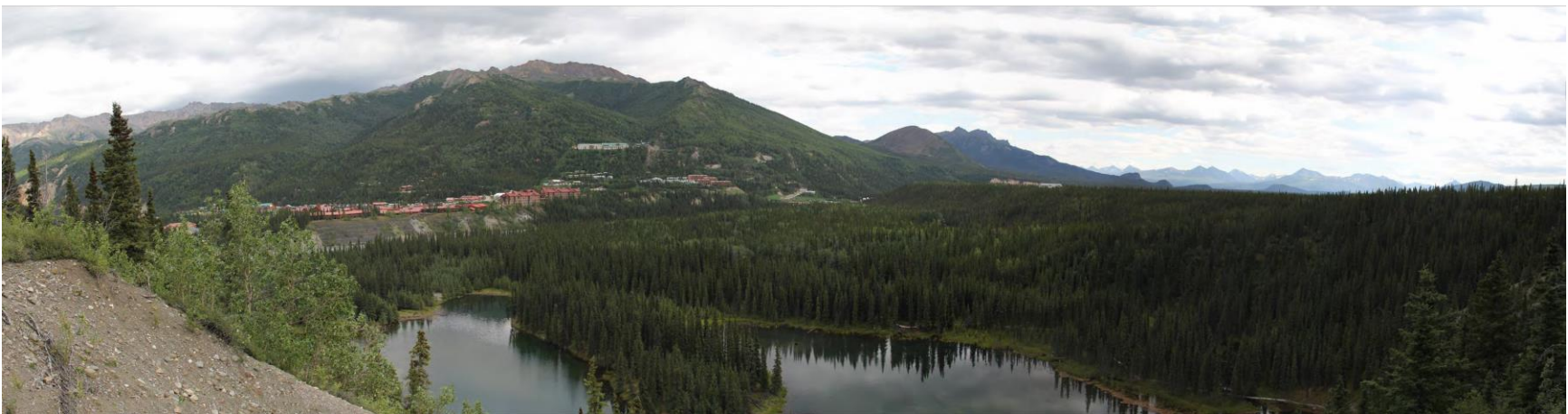


**Figure E.1.4-1 Railroad Above Horseshoe Lake Simulations; View of the Denali Alternative to the East**

**a. Existing Conditions**



**b. After Construction**





**c. After Reclamation**



E-27

**Figure E.1.4-2 Railroad Above Horseshoe Lake Winter Simulations; View of the Denali Alternative to the East**

**a. Existing Conditions**



**b. After Construction**



**Figure E.1.5-1 Mt. Healy Overlook Trail Summit Simulations; View of the Denali Alternative to the East, Southeast, and South**

E-28

**a. Existing Conditions**





**b. After Construction**



**c. After Reclamation**



E-29

**Figure E.1.5-2 Mt. Healy Overlook Trail Summit Winter Simulations; View of the Denali Alternative to the East, Southeast, and South**

**a. Existing Conditions**



**b. After Construction**



**Figure E.1.6-1 Triple Lakes Trail Simulations; View of the Denali Alternative to the Northeast**

**a. Existing Conditions**





**b. After Construction**



**c. After Reclamation**



**Figure E.1.6-2 Triple Lakes Trail Winter Simulations; View of the Denali Alternative to the Northeast**

**a. Existing Conditions**



**b. After Construction**





**Figure E.1.7-1 Nenana River Pedestrian Bridge Simulations; View of the Denali Alternative to the South**

**a. Existing Conditions**



**b. After Construction**



**c. After Reclamation**



E-34

**Figure E.1.7-2 Nenana River Pedestrian Bridge Winter Simulations; View of the Denali Alternative to the South**

**a. Existing Conditions**



**b. After Construction**





**Figure E.1.8-1 George Parks Highway MP 236 Simulations; View of the Denali Alternative to the East**

**a. Existing Conditions**



**b. After Construction**





**c. After Reclamation**



**Figure E.1.8-2 George Parks Highway MP 236 Winter Simulations; View of the Denali Alternative to the East**

**a. Existing Conditions**





**b. After Construction**





**APPENDIX E-2**

**Denali Alternative –  
Completed National Park Service Visual Resource Inventory Forms at Key Observation  
Points**

**APPENDIX E-2: COMPLETED NATIONAL PARK SERVICE VISUAL  
RESOURCE INVENTORY FORMS AT KEY OBSERVATION POINTS**

---

**Table of Figures**

Visual Resource Inventory Form – George Parks Highway Junction with Park Road..... E-39  
Visual Resource Inventory Form – Government Hill ..... E-41  
Visual Resource Inventory Form – Railroad Above Horseshoe Lake ..... E-43  
Visual Resource Inventory Form – Mt. Healy Overlook Trail Summit..... E-45  
Visual Resource Inventory Form – Triple Lakes Trail ..... E-47  
Visual Resource Inventory Form – Nenana River Pedestrian Bridge..... E-49  
Visual Resource Inventory Form – George Parks Highway Milepost 236..... E-51



**Denali National Park and Preserve**

National Park Service  
U.S. Department of the Interior



**Viewpoint: Highway Junction with Park Road**

Natural Resource Stewardship and Science

Scenic Inventory Value
C 4 = L

		View Importance Rating				
		1	2	3	4	5
Scenic Quality	A	VH	VH	VH	H	M
	B	VH	VH	H	M	L
	C	H	H	M	L	L
	D	H	M	L	VL	VL
	E	M	L	VL	VL	VL

Most Recent Inventory Date	
Scenic Quality	View Importance
6/19/2018 11:50 AM	7/18/2018 2:00 PM

Observation Data	
View Description: View from the George Parks Highway junction with the Denali Park Road, from the multi-use trail adjacent to the highway. Looking northeast to southeast across the Parks Highway toward Sugar Loaf Mountain, Mt. Fellows, and distant mountains.	
GPS Coordinates: 63.729108, -148.885863	
Left Bearing: 360 degrees	Right Bearing: 235 degrees
Landscape Character Type	Natural

Scenic Quality					
Factor		Rating	Rationale		
Landscape Character Integrity	Landscape Character Elements	3.0	Many landscape character elements are present; no water features visible		
	Inconsistent Elements	2.0	Highway, park road, multi-use trail, several road signs, trail information panel		
	Quality and Condition of Elements	4.5	Most natural and inconsistent elements are in good condition		
	<b>Sub Total</b>	<b>9.5</b>			
Vividness	Focal Points	2.5	Some ridgelines are moderate focal points, but no features hold a viewer's attention		
	Forms - Lines	2.5	A few landforms are moderately bold and interesting		
	Color Vividness	3.5	Many shades of green in the vegetation; mountains are tan, orange, and brown; ridges contain interesting textures		
	<b>Sub Total</b>	<b>8.5</b>			
Visual Harmony	Spatial Relationship	3.0	Roads and signs seem out of place		
	Scale Relationship	3.0	Left and right ends of the view are not balanced, highway and road cut seem large		
	Color Harmony	3.0	Colors of inconsistent elements (yellow road striping, blue highway sign) clash with the natural landscape colors		
	<b>Sub Total</b>	<b>9.0</b>			
		<b>Total 27.0</b>	<b>Scenic Quality Rating = C</b>		
<b>Rating Scale</b>	A(39-45)	B(31-38)	C(24-30)	D(16-23)	E(9-15)

View Importance			
Factor		Rating	Rationale
Viewpoint Importance	Publicity	1.5	Park entrance and trail are well publicized, but not necessarily for the view
	Management	2.0	Management actions: trail construction and maintenance, wayfinding signs
	Interpretive Services	1.0	Wayfinding signs
	<b>Sub Total</b>	<b>4.5</b>	
Viewed Landscape Importance	Publicity	3.0	Park entrance is well publicized
	Designated Areas	3.5	Denali Wilderness, George Parks National Scenic Byway; non-designated features include the park entrance and Sugar Loaf Mountain
	Interpretive Themes	3.5	Four of the six interpretive themes are illustrated in the view
	<b>Sub Total</b>	<b>10.0</b>	
Viewer Concern	Visitation	5.0	Nearly all park visitors pass the road junction during their visit
	View Duration	1.0	Most visitors do not linger at this viewpoint
	Viewer Activities	1.0	Most people are just passing through, on the highway or the trail
	<b>Sub Total</b>	<b>7.0</b>	
<b>Total</b>		<b>21.5</b>	<b>View Importance Rating = 4</b>

<b>Rating Scale</b>	1(39-45)	2(31-38)	3(24-30)	4(16-23)	5(9-15)
---------------------	----------	----------	----------	----------	---------



**Denali National Park and Preserve**

National Park Service  
U.S. Department of the Interior



**Viewpoint: Government Hill**

Natural Resource Stewardship and Science

Scenic Inventory Value
A 3 = VH

		View Importance Rating				
		1	2	3	4	5
Scenic Quality	A	VH	VH	VH	H	M
	B	VH	VH	H	M	L
	C	H	H	M	L	L
	D	H	M	L	VL	VL
	E	M	L	VL	VL	VL

Most Recent Inventory Date	
Scenic Quality	View Importance
6/19/2018 9:50 AM	7/18/2018 10:00 AM

Observation Data	
View Description: View from Government Hill, extending from Sugar Loaf Mountain to the descending slope of Erratic Ridge. Popular location for viewing the historic train trestle over Riley Creek, as well as the fall colors on the mountains and in the aspen trees below the park road.	
GPS Coordinates: 63.7248, -148.936	
Left Bearing: 40 degrees	Right Bearing: 235 degrees
Landscape Character Type	Natural

Scenic Quality			
Factor		Rating	Rationale
Landscape Character Integrity	Landscape Character Elements	4.5	Most landscape character elements are present, except bogs
	Inconsistent Elements	4.0	A few inconsistent elements: park road, road sign, train trestle
	Quality and Condition of Elements	5.0	Most elements are in good condition
	<b>Sub Total</b>	<b>13.5</b>	
Vividness	Focal Points	4.0	The train trestle is a strong focal point, but the mountains and creeks also draw attention
	Forms - Lines	5.0	Several things add interest: trestle, water, rugged mountains
	Color Vividness	4.0	Bold colors and textures
	<b>Sub Total</b>	<b>13.0</b>	
Visual Harmony	Spatial Relationship	5.0	Layers of ridges; curving creeks and roadway
	Scale Relationship	4.5	View is balanced, but a few foreground trees are blocking the view
	Color Harmony	4.5	Good range of natural colors, but a few inconsistent element colors clash (red & white road sign, yellow road striping)
	<b>Sub Total</b>	<b>14.0</b>	
<b>Total</b>		<b>40.5</b>	<b>Scenic Quality Rating = A</b>

Rating Scale	A(39-45)	B(31-38)	C(24-30)	D(16-23)	E(9-15)
--------------	----------	----------	----------	----------	---------

View Importance					
Factor			Rating	Rationale	
Viewpoint Importance	Publicity		2.0	Promoted among photographers and train enthusiasts; informally promoted by bus drivers and park staff	
	Management		2.5	Management actions include tree clearing and planning for potential widening of the informal road pullout	
	Interpretive Services		1.0	Some interpretation from bus drivers, especially when the aspens are yellow. Viewpoint is in Snapshots from the Past.	
	<b>Sub Total</b>		<b>5.5</b>		
Viewed Landscape Importance	Publicity		3.0	View including train trestle is highly photographed and published in external media; some NPS promotion in books and on park website	
	Designated Areas		4.5	Riley Creek Railroad Bridge, Denali Wilderness, McKinley Park Road Historic District, Denali Park Road Cultural Landscape, George Parks Scenic Byway	
	Interpretive Themes		5.0	Viewed landscape illustrates nearly all interpretive themes	
	<b>Sub Total</b>		<b>12.5</b>		
Viewer Concern	Visitation		5.0	Nearly all park visitors pass this viewpoint; many visitors stop to enjoy and photograph the view	
	View Duration		1.0	Most viewpoint visitors stop briefly, but some photographers wait a long time for the Alaska Railroad train to cross the trestle	
	Viewer Activities		5.0	People only stop here to view and photograph the scenery	
	<b>Sub Total</b>		<b>11.0</b>		
			<b>Total 29.0</b>	<b>View Importance Rating = 3</b>	
<b>Rating Scale</b>	1(39-45)	2(31-38)	3(24-30)	4(16-23)	5(9-15)



**Denali National Park and Preserve**

National Park Service  
U.S. Department of the Interior



**Viewpoint: Proxy for Railroad Above Horseshoe Lake**

Natural Resource Stewardship and Science

Scenic Inventory Value
B 4 = M

		View Importance Rating				
		1	2	3	4	5
Scenic Quality	A	VH	VH	VH	H	M
	B	VH	VH	H	M	L
	C	H	H	M	L	L
	D	H	M	L	VL	VL
	E	M	L	VL	VL	VL

Most Recent Inventory Date	
Scenic Quality	View Importance
7/12/2018 11:40 AM	7/18/2018 12:00 PM

Observation Data	
View Description: View from the bluff edge just above the railroad tracks above Horseshoe Lake; approximates the gateway view of park visitors arriving on the train. View overlooks Horseshoe Lake, entrance area developments, Sugar Loaf Mountain, and Mt. Fellows.	
GPS Coordinates: 63.73994, -148.91512	
Left Bearing: 20 degrees	Right Bearing: 160 degrees
Landscape Character Type	Natural

Scenic Quality					
Factor		Rating	Rationale		
Landscape Character Integrity	Landscape Character Elements	5.0	All landscape character elements are visible		
	Inconsistent Elements	2.0	Inconsistent elements: hotels, highway, bus depot, power lines, railroad, flashing signs		
	Quality and Condition of Elements	4.5	Natural elements and most developments appear to be in good condition; some weathered railroad ties and bank erosion below hotels on the Nenana River		
	<b>Sub Total</b>	11.5			
Vividness	Focal Points	3.5	Multiple focal points; some developments are distracting		
	Forms - Lines	4.0	The lake, ridgelines, and some hotel features add interest to the view		
	Color Vividness	4.0	Blue-green lake, green vegetation, reddish mountain tops, and red and green roofs are bold colors. Moving water in the Nenana River.		
	<b>Sub Total</b>	11.5			
Visual Harmony	Spatial Relationship	3.0	Landscape elements seem stacked to the left		
	Scale Relationship	3.5	Developments seem out of proportion with each other and with the landscape		
	Color Harmony	4.0	Some development colors clash with the natural element colors		
	<b>Sub Total</b>	10.5			
<b>Total</b>		<b>33.5</b>	<b>Scenic Quality Rating = B</b>		
<b>Rating Scale</b>	A(39-45)	B(31-38)	C(24-30)	D(16-23)	E(9-15)

View Importance				
Factor		Rating	Rationale	
Viewpoint Importance	Publicity	1.0	Viewpoint is the railroad gateway to the park, but it receives little to no publicity	
	Management	1.0	Alaska Railroad staff maintain the tracks	
	Interpretive Services	1.0	Some interpretation happens on the train	
	<b>Sub Total</b>	3.0		
Viewed Landscape Importance	Publicity	3.0	Hotels promote the viewshed; NPS publicizes Horseshoe Lake as a hiking destination	
	Designated Areas	3.0	Designated: George Parks National Scenic Byway; non-designated features include Horseshoe Lake, Sugar Loaf Mountain, Mt. Fellows, and the Nenana River	
	Interpretive Themes	3.5	Most of the interpretive themes are illustrated in this view	
	<b>Sub Total</b>	9.5		
Viewer Concern	Visitation	3.0	Many park visitors travel between Denali and Fairbanks via the railroad	
	View Duration	1.0	Visitors travel past this point on a moving train	
	Viewer Activities	1.5	Railroad passengers are enjoying the view while traveling	
	<b>Sub Total</b>	5.5		
		<b>Total</b>	<b>18.0</b>	<b>View Importance Rating = 4</b>

<b>Rating Scale</b>	1(39-45)	2(31-38)	3(24-30)	4(16-23)	5(9-15)
---------------------	----------	----------	----------	----------	---------



**Denali National Park and Preserve**

National Park Service  
U.S. Department of the Interior



**Viewpoint: Mount Healy Overlook Trail Summit**

Natural Resource Stewardship and Science

Scenic Inventory Value
B 2 = VH

		View Importance Rating				
		1	2	3	4	5
Scenic Quality	A	VH	VH	VH	H	M
	B	VH	VH	H	M	L
	C	H	H	M	L	L
	D	H	M	L	VL	VL
	E	M	L	VL	VL	VL

Most Recent Inventory Date	
Scenic Quality	View Importance
7/13/2018 1:00 PM	7/18/2018 11:00 AM

Observation Data	
View Description: View from the summit of the Mt. Healy Overlook Trail, extending from the north end of Sugar Loaf Mountain through the east, south, and southwest to the adjacent peak where the park radio repeater is installed.	
GPS Coordinates: 63.742427, -148.953290	
Left Bearing: 20 degrees	Right Bearing: 250 degrees
Landscape Character Type	Natural

Scenic Quality					
Factor		Rating	Rationale		
Landscape Character Integrity	Landscape Character Elements	5.0	All landscape elements are visible		
	Inconsistent Elements	1.5	Inconsistent elements: gateway area developments, park headquarters, intertie transmission line, two airstrips, George Parks Highway, park road		
	Quality and Condition of Elements	5.0	Natural elements look healthy and developments appear to be in good condition from this distance		
	<b>Sub Total</b>	11.5			
Vividness	Focal Points	3.0	Multiple focal points in the view		
	Forms - Lines	4.5	Ridges, lines of the roads, the river, creeks, and Horseshoe Lake add interest to the view		
	Color Vividness	4.5	Varied greens in the vegetation, red hotel roofs, and blue distant peaks are some of the vibrant colors in the view		
	<b>Sub Total</b>	12.0			
Visual Harmony	Spatial Relationship	5.0	The view is encircled by ridges, and developments are low and flat		
	Scale Relationship	4.5	Development in the gateway area seems a little out of scale		
	Color Harmony	4.0	Some roofs and parked vehicles are very shiny, and some red roofs seem out of place		
	<b>Sub Total</b>	13.5			
		<b>Total 37.0</b>	<b>Scenic Quality Rating = B</b>		
<b>Rating Scale</b>	A(39-45)	B(31-38)	C(24-30)	D(16-23)	E(9-15)

View Importance				
Factor		Rating	Rationale	
Viewpoint Importance	Publicity	5.0	The Mt. Healy Overlook Trail is well publicized; even the name indicates that the scenery is an important aspect of the hiking destination	
	Management	4.0	Management activities include trail maintenance and installing an end-of-trail sign at the summit	
	Interpretive Services	1.0	There are no interpretive services at the trail summit	
	<b>Sub Total</b>	<b>10.0</b>		
Viewed Landscape Importance	Publicity	4.5	The scenery is a well publicized reason for hiking the trail, and features in the viewed landscape are well publicized	
	Designated Areas	4.5	Designated scenic overlook, Denali Wilderness, George Parks National Scenic Byway, many non-designated, locally prominent landscape features	
	Interpretive Themes	5.0	All interpretive themes are illustrated by this view, including the Denali massif	
	<b>Sub Total</b>	<b>14.0</b>		
Viewer Concern	Visitation	1.0	Fewer than one third of park visitors reach the summit of this strenuous trail	
	View Duration	3.5	Hikers remain at the trail summit for a relatively long time	
	Viewer Activities	4.5	Most hikers spend time enjoying the scenery at the trail summit	
	<b>Sub Total</b>	<b>9.0</b>		
		<b>Total</b>	<b>33.0</b>	<b>View Importance Rating = 2</b>
<b>Rating Scale</b>	1(39-45)	2(31-38)	3(24-30)	4(16-23) 5(9-15)



Denali National Park and Preserve

National Park Service  
U.S. Department of the Interior



Viewpoint: Triple Lakes Trail

Natural Resource Stewardship and Science

Scenic Inventory Value
B 3 = H

		View Importance Rating				
		1	2	3	4	5
Scenic Quality	A	VH	VH	VH	H	M
	B	VH	VH	H	M	L
	C	H	H	M	L	L
	D	H	M	L	VL	VL
	E	M	L	VL	VL	VL

Most Recent Inventory Date	
Scenic Quality	View Importance
6/19/2018 2:10 PM	7/18/2018 4:00 PM

Observation Data	
View Description: View from the Triple Lakes Trail, approximately 0.4 miles from the southern trailhead. Looking north to northeast toward Mt. Fellows, Sugar Loaf Mountain, and the Nenana River below.	
GPS Coordinates: 63.65285, -148.8431	
Left Bearing: 340 degrees	Right Bearing: 40 degrees
Landscape Character Type	Natural

Scenic Quality					
Factor		Rating	Rationale		
Landscape Character Integrity	Landscape Character Elements	4.0	Many landscape character elements are present, except glaciers and bogs		
	Inconsistent Elements	4.0	Highway, bridge, trail, intertie transmission line		
	Quality and Condition of Elements	4.5	Most elements are in good condition		
	<b>Sub Total</b>	<b>12.5</b>			
Vividness	Focal Points	3.5	The mountains, river, cut banks, and Musher's Rock hold attention		
	Forms - Lines	4.0	Ridgelines, peaks, cut banks, and the river add interest to the view		
	Color Vividness	4.0	Good range of greens in the vegetation, and browns, tans, reddish browns and white snow on the mountains		
	<b>Sub Total</b>	<b>11.5</b>			
Visual Harmony	Spatial Relationship	4.5	Natural features are in balance; bridge and highway are a little out of balance in the view		
	Scale Relationship	4.0	Foreground vegetation is out of scale with the middle and background view		
	Color Harmony	4.5	Good variety of colors, including light and dark hues		
	<b>Sub Total</b>	<b>13.0</b>			
<b>Total</b>		<b>37.0</b>	<b>Scenic Quality Rating = B</b>		
<b>Rating Scale</b>	A(39-45)	B(31-38)	C(24-30)	D(16-23)	E(9-15)

View Importance					
Factor			Rating	Rationale	
Viewpoint Importance	Publicity		3.5	The Triple Lakes Trail is well publicized in park publications and online	
	Management		3.0	Management actions include trail maintenance and brushing	
	Interpretive Services		1.5	Some commercial guided hiking	
	<b>Sub Total</b>		8.0		
Viewed Landscape Importance	Publicity		3.5	Viewed landscape is publicized online and through local businesses and non-profit organizations	
	Designated Areas		4.0	George Parks National Scenic Byway, unpublicized Archeology Site; non-designated features include Mt. Fellows and Sugar Loaf Mountain	
	Interpretive Themes		4.0	Most of the interpretive themes are illustrated in the view	
	<b>Sub Total</b>		11.5		
Viewer Concern	Visitation		1.0	Fewer than 1/3 of park visitors hike to this viewpoint	
	View Duration		2.0	Hikers sometimes pause briefly to take in the view where the vegetation opens up	
	Viewer Activities		3.0	Hiking is the primary focus of activity, but the scenery is important, too	
	<b>Sub Total</b>		6.0		
<b>Total</b>			<b>25.5</b>	<b>View Importance Rating = 3</b>	
<b>Rating Scale</b>	1(39-45)	2(31-38)	3(24-30)	4(16-23)	5(9-15)



**Denali National Park and Preserve**

National Park Service  
U.S. Department of the Interior



**Viewpoint: Nenana River Pedestrian Bridge**

Natural Resource Stewardship and Science

Scenic Inventory Value
C 4 = L

		View Importance Rating				
		1	2	3	4	5
Scenic Quality	A	VH	VH	VH	H	M
	B	VH	VH	H	M	L
	C	H	H	M	L	L
	D	H	M	L	VL	VL
	E	M	L	VL	VL	VL

Most Recent Inventory Date	
Scenic Quality	View Importance
6/19/2018 4:30 PM	7/18/2018 1:00 PM

Observation Data	
View Description: View looking northwest, north, east and south from the trail leading to the Nenana River pedestrian bridge north of the park entrance. View includes Healy Ridge, the Nenana River, surrounding hills, gateway hotels and businesses, the George Parks highway, the vehicle bridge, and the pedestrian bridge.	
GPS Coordinates: 63.736457, -148.886472	
Left Bearing: 290 degrees	Right Bearing: 195 degrees
Landscape Character Type	Natural

Scenic Quality					
Factor		Rating	Rationale		
Landscape Character Integrity	Landscape Character Elements	4.5	Most landscape character elements are visible		
	Inconsistent Elements	1.5	Hotels, businesses, bridges, highway, trails, guard rails, highway and trail signs		
	Quality and Condition of Elements	3.5	Most elements are in fairly good condition; some vegetation growing into the trail, some business and highway signs are in poor shape		
	<b>Sub Total</b>	9.5			
Vividness	Focal Points	3.0	Several weak to moderately strong focal points, including mountains, river, and hotels		
	Forms - Lines	3.5	Mountains, river and some hotels add interest to the view		
	Color Vividness	4.5	Many vivid colors, and the river is a strong moving element because it is so close		
	<b>Sub Total</b>	11.0			
Visual Harmony	Spatial Relationship	2.0	Natural features are balanced, and the curves of the trail and pedestrian bridge add order; hotels and buildings appear randomly placed		
	Scale Relationship	3.0	Most elements are in scale; guard rails are somewhat out of proportion		
	Color Harmony	3.0	Sign colors detract from the colors of the natural landscape; development colors are fairly harmonious		
	<b>Sub Total</b>	8.0			
<b>Total</b>		<b>28.5</b>	<b>Scenic Quality Rating = C</b>		
<b>Rating Scale</b>	A(39-45)	B(31-38)	C(24-30)	D(16-23)	E(9-15)

View Importance					
Factor		Rating	Rationale		
Viewpoint Importance	Publicity	1.5	Some publicity as pedestrian access to the park from gateway businesses		
	Management	2.0	Some trail maintenance and highway shoulder clearing		
	Interpretive Services	1.0	Wayfinding signs are nearby, but not at the site		
	<b>Sub Total</b>	4.5			
Viewed Landscape Importance	Publicity	2.0	Occasionally noted as the highway and trail entrance to the park		
	Designated Areas	3.0	Denali Wilderness, George Parks National Scenic Byway; non-designated features include the highway park entrance and Sugar Loaf Mountain		
	Interpretive Themes	1.5	Two themes are illustrated: People and the Land, and Dynamic Change		
	<b>Sub Total</b>	6.5			
Viewer Concern	Visitation	3.0	Many visitors cross the park boundary here on the highway and on the multi-use trail		
	View Duration	1.0	Most park visitors pass through this area; some stop for the view from the bridge or the nearby trail bench		
	Viewer Activities	1.0	Most people are driving, walking, or biking through this area		
	<b>Sub Total</b>	5.0			
		<b>Total</b>	<b>16.0</b>	<b>View Importance Rating = 4</b>	
<b>Rating Scale</b>	1(39-45)	2(31-38)	3(24-30)	4(16-23)	5(9-15)



Scenic Inventory Value
B 4 = M

		View Importance Rating				
		1	2	3	4	5
Scenic Quality	A	VH	VH	VH	H	M
	B	VH	VH	H	M	L
	C	H	H	M	L	L
	D	H	M	L	VL	VL
	E	M	L	VL	VL	VL

Most Recent Inventory Date	
Scenic Quality	View Importance
7/12/2018 9:50 AM	7/18/2018 3:00 PM

Observation Data	
View Description: View from the George Parks Highway south of Milepost 236, where the railroad tracks are very close to the highway. View of Mt. Healy, Sugar Loaf Mountain, Mount Fellows, Pyramid Mountain, and distant peaks.	
GPS Coordinates: 63.70996, -148.88713	
Left Bearing: 320 degrees	Right Bearing: 170 degrees
Landscape Character Type	Natural

Scenic Quality			
Factor		Rating	Rationale
Landscape Character Integrity	Landscape Character Elements	4.0	Most landscape character elements are visible, except bogs and water
	Inconsistent Elements	2.0	Highway, railroad, intertie transmission line, highway signs, traffic
	Quality and Condition of Elements	4.5	Most elements are in good condition; some frost heaves and litter on the highway
	<b>Sub Total</b>	<b>10.5</b>	
Vividness	Focal Points	4.0	There are multiple attractive ridgeline focal points
	Forms - Lines	4.0	The view includes interesting ridgelines and escarpments
	Color Vividness	4.5	Variety of greens, reddish and brown rocks, bold textures
	<b>Sub Total</b>	<b>12.5</b>	
Visual Harmony	Spatial Relationship	4.0	The ridges and valleys are in a balanced arrangement
	Scale Relationship	4.0	The road is a little out of scale, but tapers into the distance to the north
	Color Harmony	4.0	The colors of the natural elements are varied and blend well together, but some railroad and highway signs clash
	<b>Sub Total</b>	<b>12.0</b>	
<b>Total</b>		<b>35.0</b>	<b>Scenic Quality Rating = B</b>

Rating Scale	A(39-45)	B(31-38)	C(24-30)	D(16-23)	E(9-15)
--------------	----------	----------	----------	----------	---------



View Importance					
Factor			Rating	Rationale	
Viewpoint Importance	Publicity		2.0	The George Parks Highway is publicized as a Scenic Byway	
	Management		1.5	NPS staff and volunteers remove invasive plants along the highway; routine highway maintenance	
	Interpretive Services		1.0	Limited interpretation in passing on buses and trains	
	<b>Sub Total</b>		4.5		
Viewed Landscape Importance	Publicity		2.5	Some publicity of the Nenana River Valley and surrounding peaks	
	Designated Areas		4.0	Denali Wilderness, George Parks National Scenic Byway; non-designated features include Mt. Fellows, Sugar Loaf Mountain, and Mt. Healy	
	Interpretive Themes		4.0	The viewed landscape illustrates many of the park's interpretive themes	
	<b>Sub Total</b>		10.5		
Viewer Concern	Visitation		4.5	Many park visitors pass this location on the highway or the railroad	
	View Duration		1.0	Few people stop here; most enjoy the view in transit	
	Viewer Activities		2.0	Most visitors are traveling along the scenic byway	
	<b>Sub Total</b>		7.5		
			<b>Total</b>	<b>22.5</b>	<b>View Importance Rating = 4</b>
<b>Rating Scale</b>	1(39-45)	2(31-38)	3(24-30)	4(16-23)	5(9-15)