

APPENDIX B
(Volume 2 of 4)

Project Maps

Mainline Facilities MP 355–540

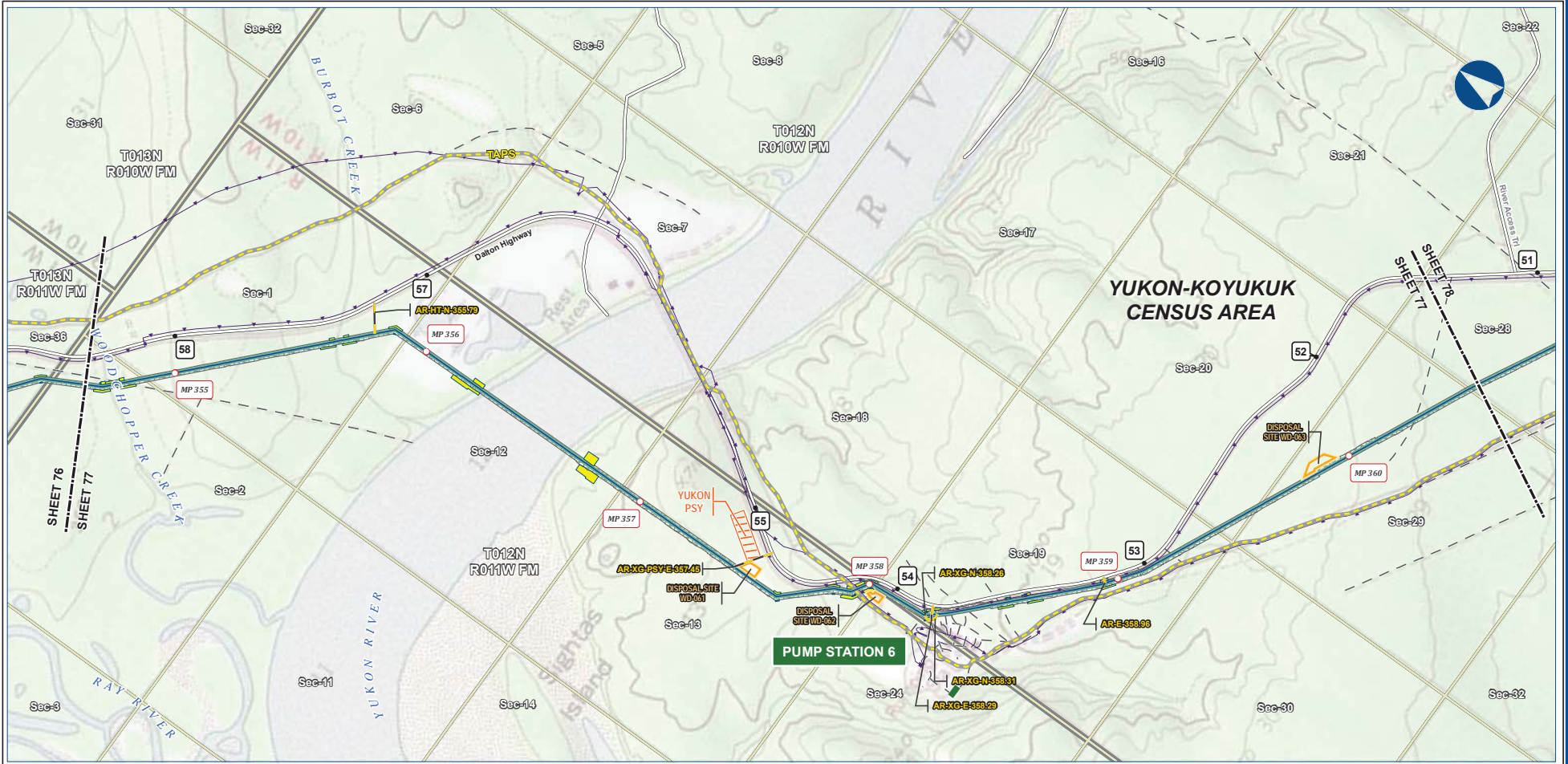
APPENDIX B VOLUME 2: PROJECT MAPS – MAINLINE FACILITIES MP 355–540

Table of Contents

Mainline Facilities (cont'd)..... B-84

PRELIMINARY FACILITY LOCATIONS - MAINLINE REV C2 ROUTE

ALASKA LNG



B-84



Alaska LNG Project

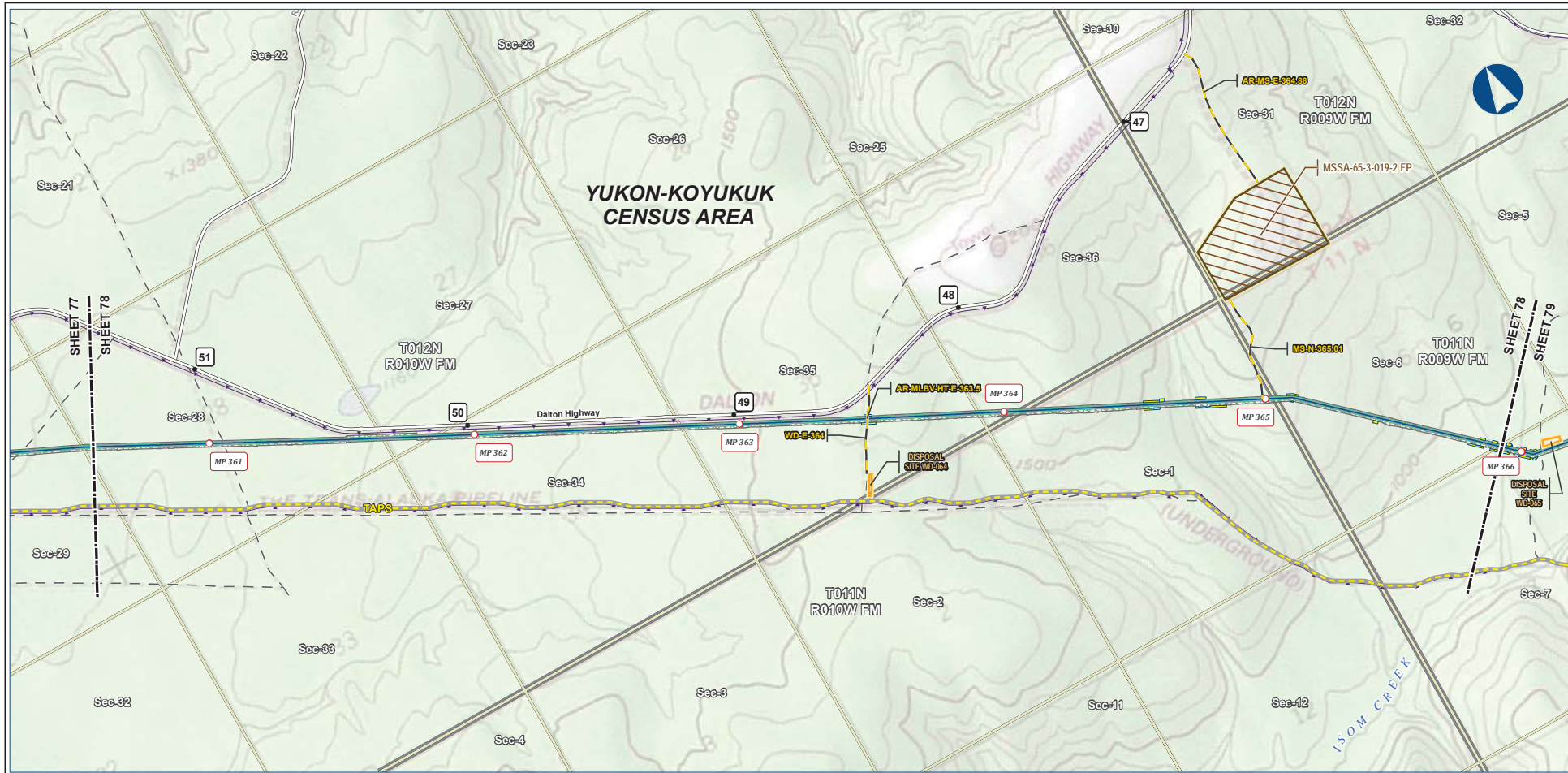
Legend		EXISTING FEATURES	
Mainline Pipeline	Permanent ROW	Existing Roads	Off Road Trails
Access Road - Gravel	Construction ROW	TAPS	Buried Cable
ATWS	Pipe Storage Yard (PSY)	Alaska DOT Place Names	Section
Disposal Site	Disposal Site	Township	

ALASKA LNG PROJECT Preliminary Facility Locations Mainline Rev C2 Route			
CENSUS AREA:	YUKON-KOYUKUK	DRAWN BY:	AGDC
STATE:	ALASKA	CHECKED BY:	
REV. NO.:	REVISION	DATE	
A	ISSUED FOR REVIEW	2017-03-10	
PRELIMINARY			
1:24,000			
DATE:	2017-03-10	PROJECTION:	NAD83 NRSR2007 ALASKAZONE4 FTUS 54392

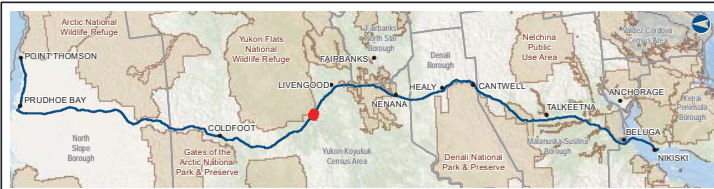
DISCLAIMER

The information contained herein is for informational or planning purposes only. It does not nor should it be deemed to be an offer, request or proposals for rights or occupation of any kind. The Alaska LNG Project Participants and their respective officers, employees and agents, make no warranty, implied or otherwise, nor accept any liability, as to the accuracy or completeness of the information contained in these documents, drawings or electronic files. Do not remove or delete this note from document, drawing or electronic file.

DWG: RR-1 APPENDIX_A1_MAINLINE_TOPO_REV_C2_CL SHEET: 77



B-85



Legend		EXISTING FEATURES	
Mainline Pipeline	Permanent ROW	Existing Roads	Off Road Trails
Access Road - Gravel	Construction ROW	TAPS	Buried Cable
Disposal Site	ATWS	Section	Township
Material Site Study Area (MSSA)			

ALASKA LNG PROJECT			
Preliminary Facility Locations			
Mainline Rev C2 Route			
CENSUS AREA:	YUKON-KOYUKUK	DRAWN BY:	AGDC
STATE:	ALASKA	CHECKED BY:	
REV. NO.:	REVISION	DATE	
A	ISSUED FOR REVIEW	2017-03-10	
PRELIMINARY			
1:24,000			
DATE:	2017-03-10	PROJECTION:	NAD83 NRSR2007 ALASKAZONE4 FTUS 54392

DISCLAIMER

The information contained herein is for informational or planning purposes only. It does not nor should it be deemed to be an offer, request or proposals for rights or occupation of any kind. The Alaska LNG Project Participants and their respective officers, employees and agents, make no warranty, implied or otherwise, nor accept any liability, as to the accuracy or completeness of the information contained in these documents, drawings or electronic files. Do not remove or delete this note from document, drawing or electronic file.

PRELIMINARY FACILITY LOCATIONS - MAINLINE REV C2 ROUTE



B-86



Legend

PIPELINE	Permanent ROW	EXISTING FEATURES
Mainline Pipeline	Construction ROW	Existing Roads
Access Road - Gravel	ATWS	Off Road Trails
	Pipe Storage Yard (PSY)	TAPS
	Disposal Site	Buried Cable
	Material Site Study Area (MSSA)	Section
		Township

ALASKA LNG PROJECT
Preliminary Facility Locations
Mainline Rev C2 Route

CENSUS AREA: YUKON-KOYUKUK	DRAWN BY: AGDC
STATE: ALASKA	CHECKED BY:
REV. NO.:	REVISION
A	ISSUED FOR REVIEW
	DATE
	2017-03-10
PRELIMINARY	
1:24,000	
0 10 20 Miles	
DATE: 2017-03-10	PROJECTION: NAD83 NSRS2007 ALASKAZONE4 FTUS 54392

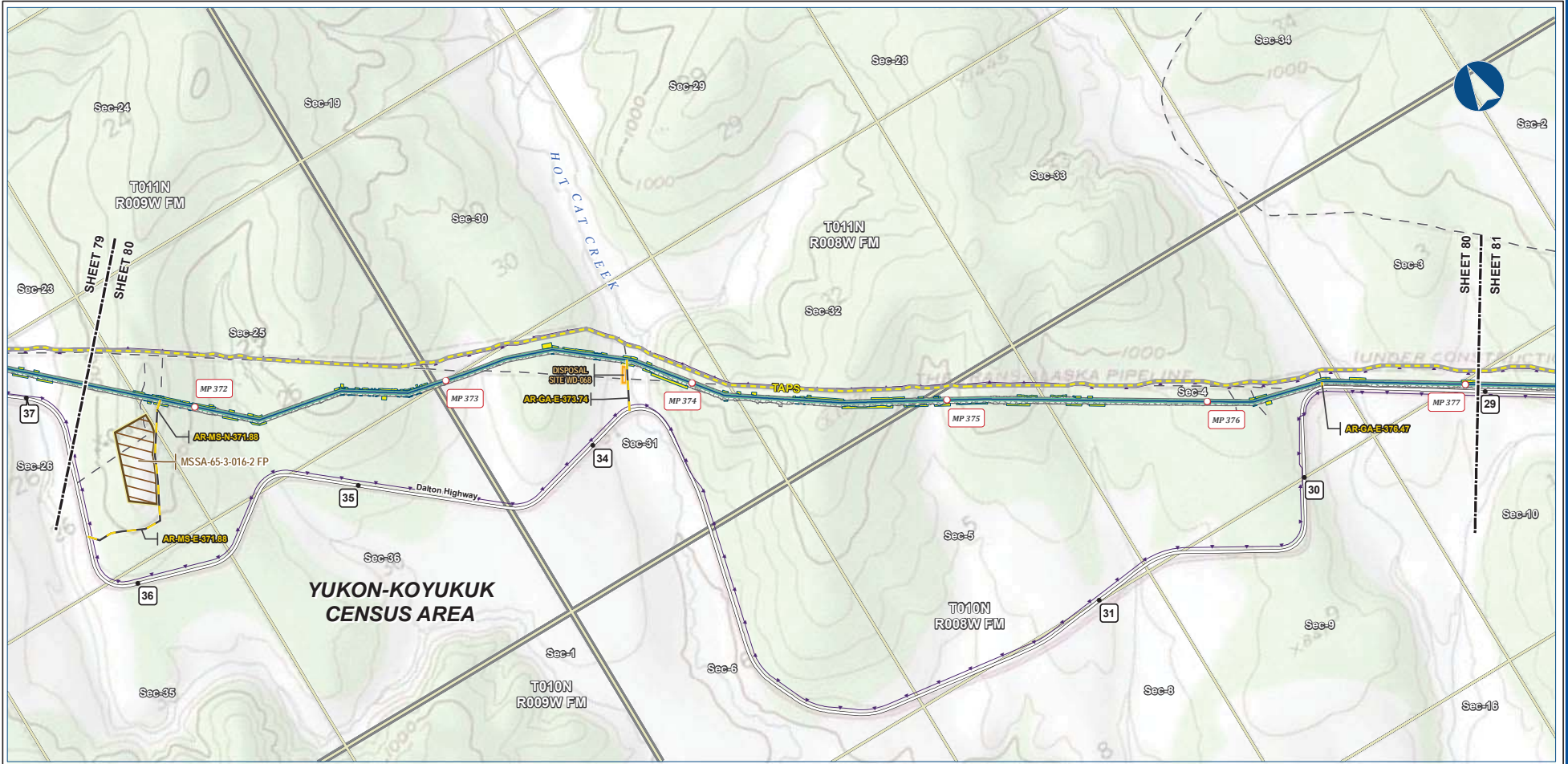
DISCLAIMER

The information contained herein is for informational or planning purposes only. It does not nor should it be deemed to be an offer, request or proposals for rights or occupation of any kind. The Alaska LNG Project Participants and their respective officers, employees and agents, make no warranty, implied or otherwise, nor accept any liability, as to the accuracy or completeness of the information contained in these documents, drawings or electronic files. Do not remove or delete this note from document, drawing or electronic file.

DWG: RR-1_APPENDIX_A1_MAINLINE_TOPO_REV_C2_CL SHEET: 79

PRELIMINARY FACILITY LOCATIONS - MAINLINE REV C2 ROUTE

ALASKA LNG



B-87



Legend		EXISTING FEATURES	
PIPELINE	Permanent ROW	Existing Roads	Off Road Trails
Mainline Pipeline	Construction ROW	ATWS	TAPS
Access Road - Gravel	Disposal Site	Buried Cable	Section
	Material Site Study Area (MSSA)	Township	

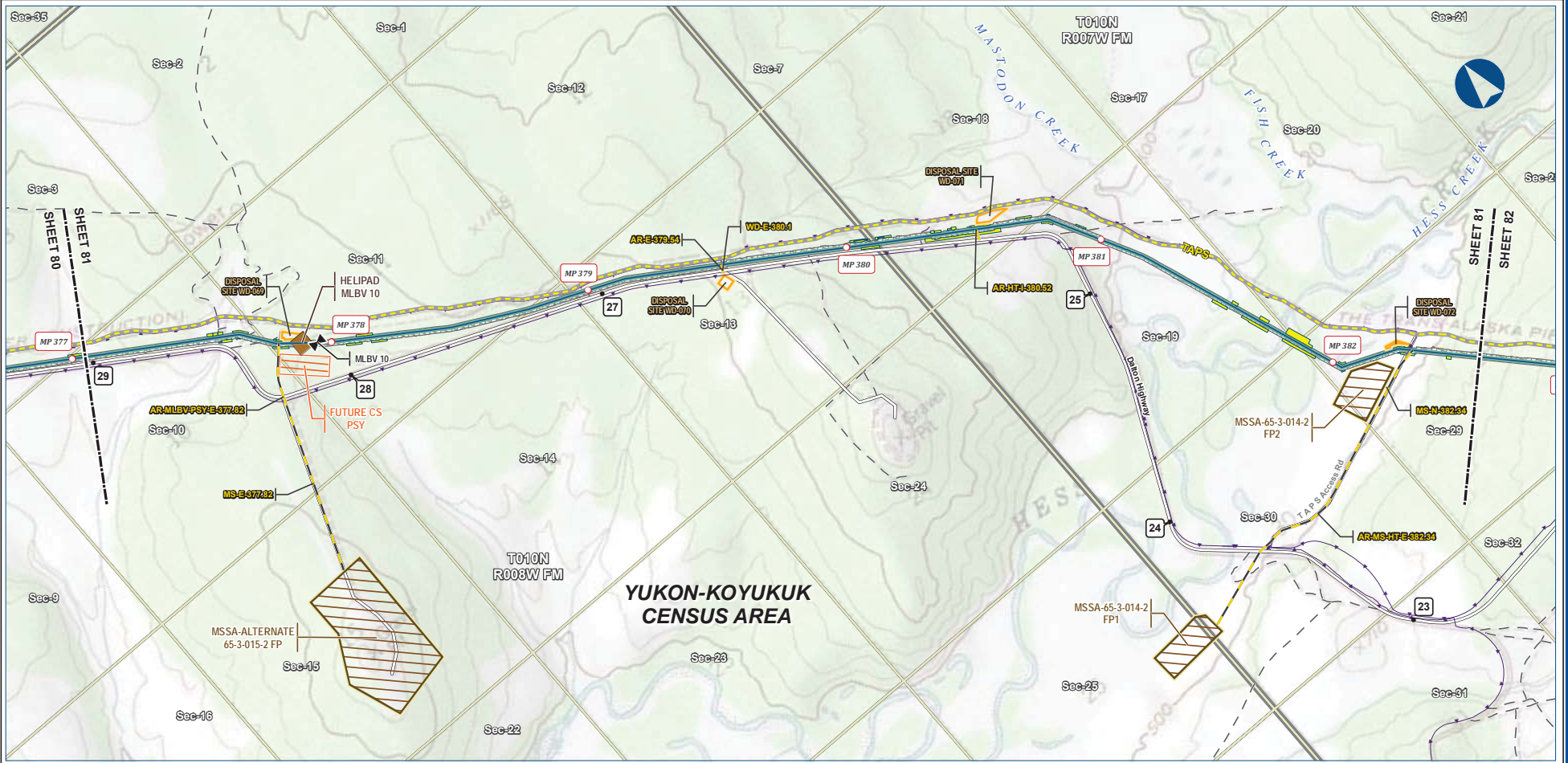
ALASKA LNG PROJECT Preliminary Facility Locations Mainline Rev C2 Route			
CENSUS AREA:	YUKON-KOYUKUK	DRAWN BY:	AGDC
STATE:	ALASKA	CHECKED BY:	
REV. NO.:	A	REVISION	ISSUED FOR REVIEW
		DATE	2017-03-10
PRELIMINARY			
1:24,000			
DATE:	2017-03-10	PROJECTION:	NAD83 NRSR2007 ALASKAZONE4 FTUS 54392

DISCLAIMER

The information contained herein is for informational or planning purposes only. It does not nor should it be deemed to be an offer, request or proposals for rights or occupation of any kind. The Alaska LNG Project Participants and their respective officers, employees and agents, make no warranty, implied or otherwise, nor accept any liability, as to the accuracy or completeness of the information contained in these documents, drawings or electronic files. Do not remove or delete this note from document, drawing or electronic file.

Alaska LNG Project

PRELIMINARY FACILITY LOCATIONS - MAINLINE REV C2 ROUTE



B-88



Legend		EXISTING FEATURES	
PIPELINE	Permanent ROW	Existing Roads	Off Road Trails
Mainline Pipeline	Construction ROW	TAPS	Buried Cable
Access Road - Gravel	ATWS	Section	Township
Mainline Blockvalve	Pipe Storage Yard (PSY)	Disposal Site	
Helipad	Disposal Site	Material Site Study Area (MSSA)	

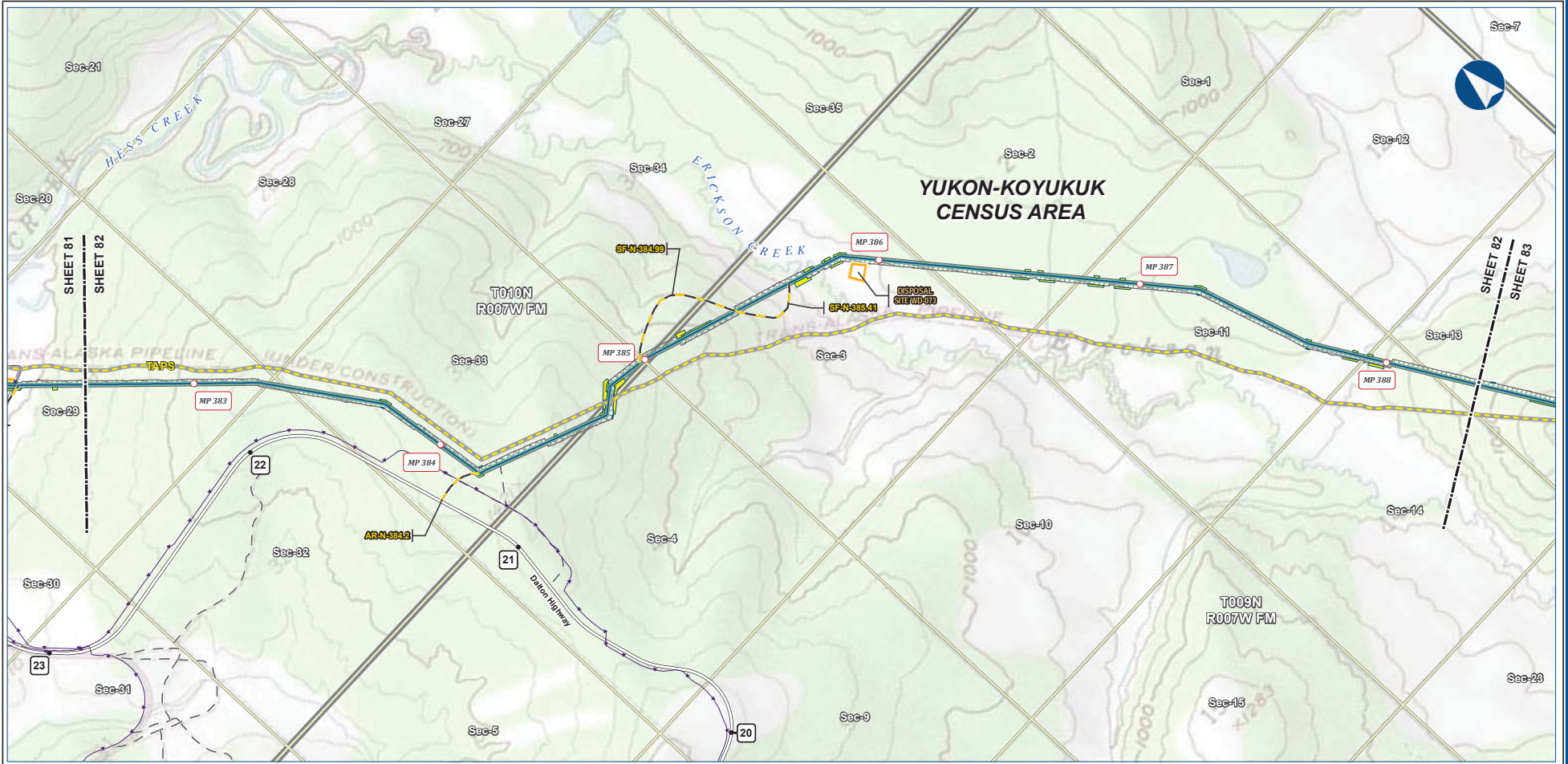
ALASKA LNG PROJECT Preliminary Facility Locations Mainline Rev C2 Route			
CENSUS AREA:	YUKON-KOYUKUK	DRAWN BY:	AGDC
STATE:	ALASKA	CHECKED BY:	
REV. NO.:		REVISION	DATE
A		ISSUED FOR REVIEW	2017-03-10
PRELIMINARY			
1:24,000			
DATE:	2017-03-10	PROJECTION:	NAD83 NRSR2007 ALASKAZONE4 FTUS S4392

DISCLAIMER

The information contained herein is for informational or planning purposes only. It does not nor should it be deemed to be an offer, request or proposals for rights or occupation of any kind. The Alaska LNG Project Participants and their respective officers, employees and agents, make no warranty, implied or otherwise, nor accept any liability, as to the accuracy or completeness of the information contained in these documents, drawings or electronic files. Do not remove or delete this note from document, drawing or electronic file.

PRELIMINARY FACILITY LOCATIONS - MAINLINE REV C2 ROUTE

ALASKA LNG



B-89



Legend		EXISTING FEATURES	
Mainline Pipeline	Permanent ROW	Existing Roads	Off Road Trails
Access Road - Gravel	ATWS	TAPS	Buried Cable
Disposal Site	Construction ROW	Section	Township

ALASKA LNG PROJECT Preliminary Facility Locations Mainline Rev C2 Route		
CENSUS AREA: YUKON-KOYUKUK	DRAWN BY: AGDC	
STATE: ALASKA	CHECKED BY:	
REV. NO.:	REVISION	DATE
A	ISSUED FOR REVIEW	2017-03-10
PRELIMINARY		
1:24,000		
DATE: 2017-03-10	PROJECTION: NAD83 NSRS2007 ALASKAZONE4 FTUS 54392	

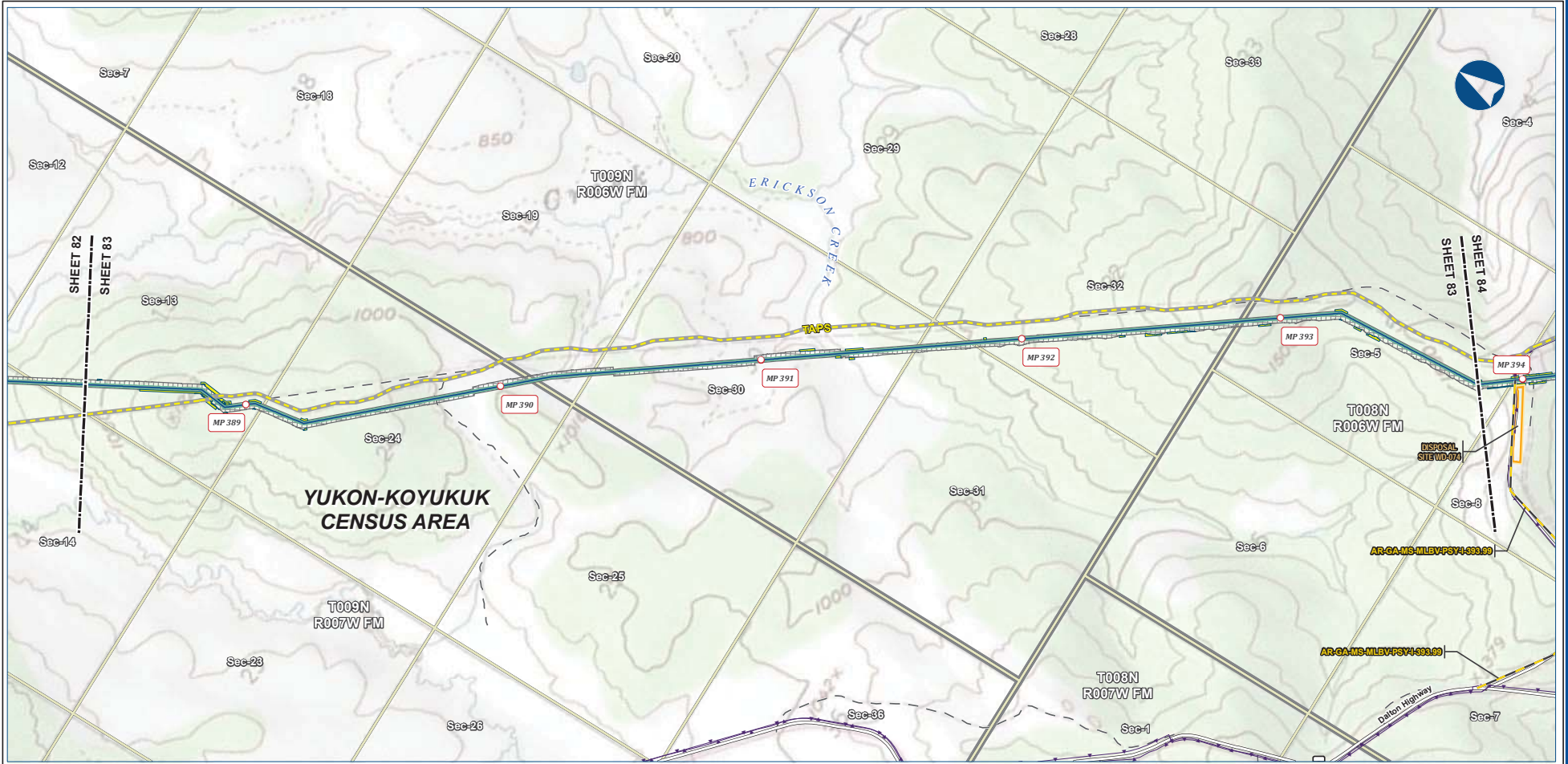
DISCLAIMER

The information contained herein is for informational or planning purposes only. It does not nor should it be deemed to be an offer, request or proposals for rights or occupation of any kind. The Alaska LNG Project Participants and their respective officers, employees and agents, make no warranty, implied or otherwise, nor accept any liability, as to the accuracy or completeness of the information contained in these documents, drawings or electronic files. Do not remove or delete this note from document, drawing or electronic file.

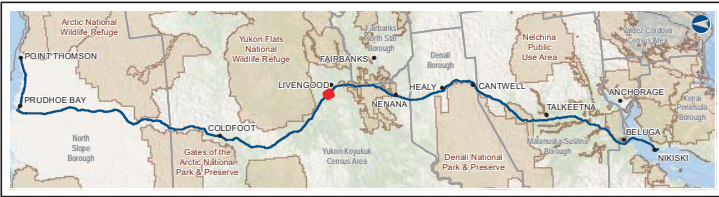
Alaska LNG Project

PRELIMINARY FACILITY LOCATIONS - MAINLINE REV C2 ROUTE

ALASKA LNG



B-90



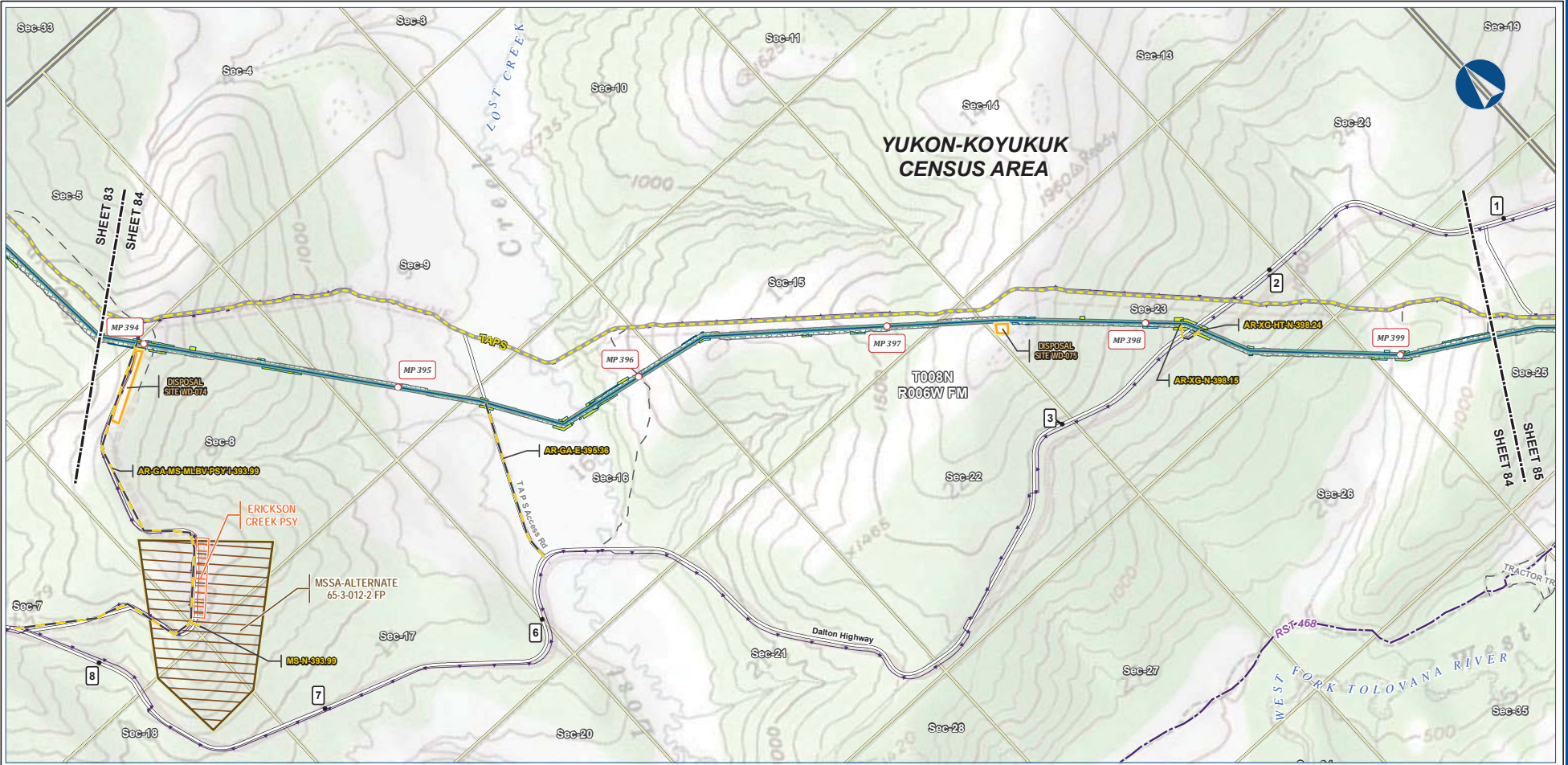
Legend	
Mainline Pipeline	Permanent ROW
Access Road - Gravel	Construction ROW
Disposal Site	ATWS
Existing Roads	Off Road Trails
TAPS	Buried Cable
Section	Township

ALASKA LNG PROJECT Preliminary Facility Locations Mainline Rev C2 Route			
CENSUS AREA:	YUKON-KOYUKUK	DRAWN BY:	AGDC
STATE:	ALASKA	CHECKED BY:	
REV. NO.:		REVISION	DATE
A		ISSUED FOR REVIEW	2017-03-10
PRELIMINARY			
1:24,000			
0 1/4 1/2 3/4 1 Mile			
DATE:	2017-03-10	PROJECTION:	NAD83 NRSR2007 ALASKAZONE4 FTUS S4392

DISCLAIMER
The information contained herein is for informational or planning purposes only. It does not nor should it be deemed to be an offer, request or proposals for rights or occupation of any kind. The Alaska LNG Project Participants and their respective officers, employees and agents, make no warranty, implied or otherwise, nor accept any liability, as to the accuracy or completeness of the information contained in these documents, drawings or electronic files. Do not remove or delete this note from document, drawing or electronic file.

Alaska LNG Project

PRELIMINARY FACILITY LOCATIONS - MAINLINE REV C2 ROUTE



B-91



Legend		EXISTING FEATURES	
Permanent ROW	Mainline Pipeline	Existing Roads	Revised Statute 2477 Trail
Construction ROW	Access Road - Gravel	Off Road Trails	TAPS
ATWS	Pipe Storage Yard (PSY)	Buried Cable	Section
Disposal Site	Material Site Study Area (MSSA)	Township	

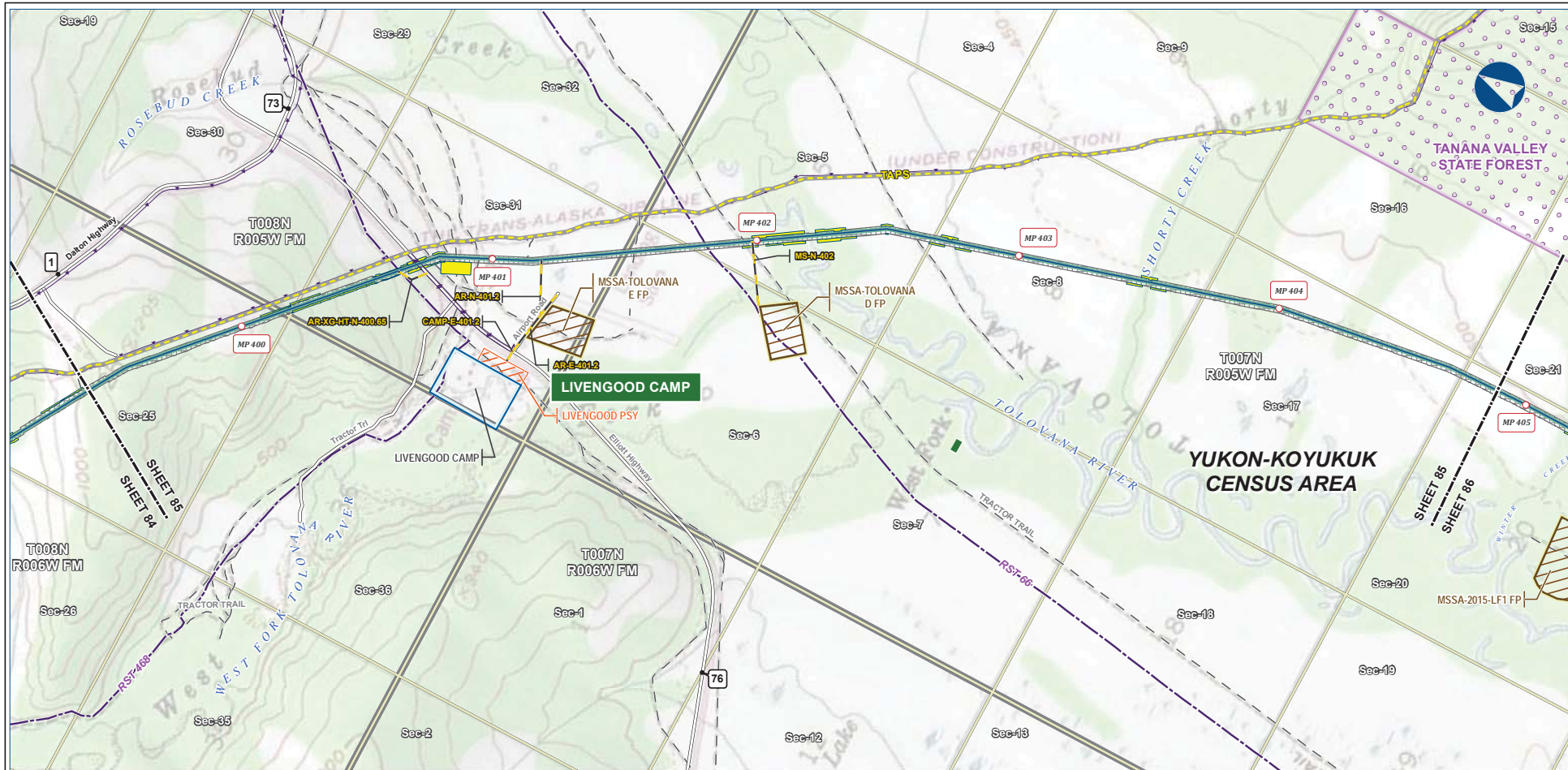
ALASKA LNG PROJECT Preliminary Facility Locations Mainline Rev C2 Route			
CENSUS AREA:	YUKON-KOYUKUK	DRAWN BY:	AGDC
STATE:	ALASKA	CHECKED BY:	
REV. NO.:	REVISION	DATE	
A	ISSUED FOR REVIEW	2017-03-10	
PRELIMINARY			
1:24,000			
DATE:	2017-03-10	PROJECTION:	NAD83 NRSR2007 ALASKAZONE4 FTUS S4392

DISCLAIMER

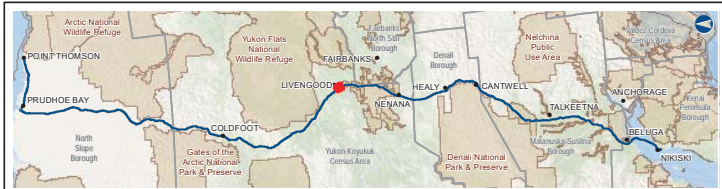
The information contained herein is for informational or planning purposes only. It does not nor should it be deemed to be an offer, request or proposals for rights or occupation of any kind. The Alaska LNG Project Participants and their respective officers, employees and agents, make no warranty, implied or otherwise, nor accept any liability, as to the accuracy or completeness of the information contained in these documents, drawings or electronic files. Do not remove or delete this note from document, drawing or electronic file.

PRELIMINARY FACILITY LOCATIONS - MAINLINE REV C2 ROUTE

ALASKA LNG



B-92



PIPELINE		EXISTING FEATURES	
	Mainline Pipeline		Existing Roads
	Construction ROW		Revised Statute 2477 Trail
	Access Road - Gravel		Off Road Trails
	Permanent ROW		TAPS
	ATWS		Buried Cable
	Off ROW Camp		Conservation Lands
	Pipe Storage Yard (PSY)		Alaska DOT Place Names
	Material Site Study Area (MSSA)		Section
			Township

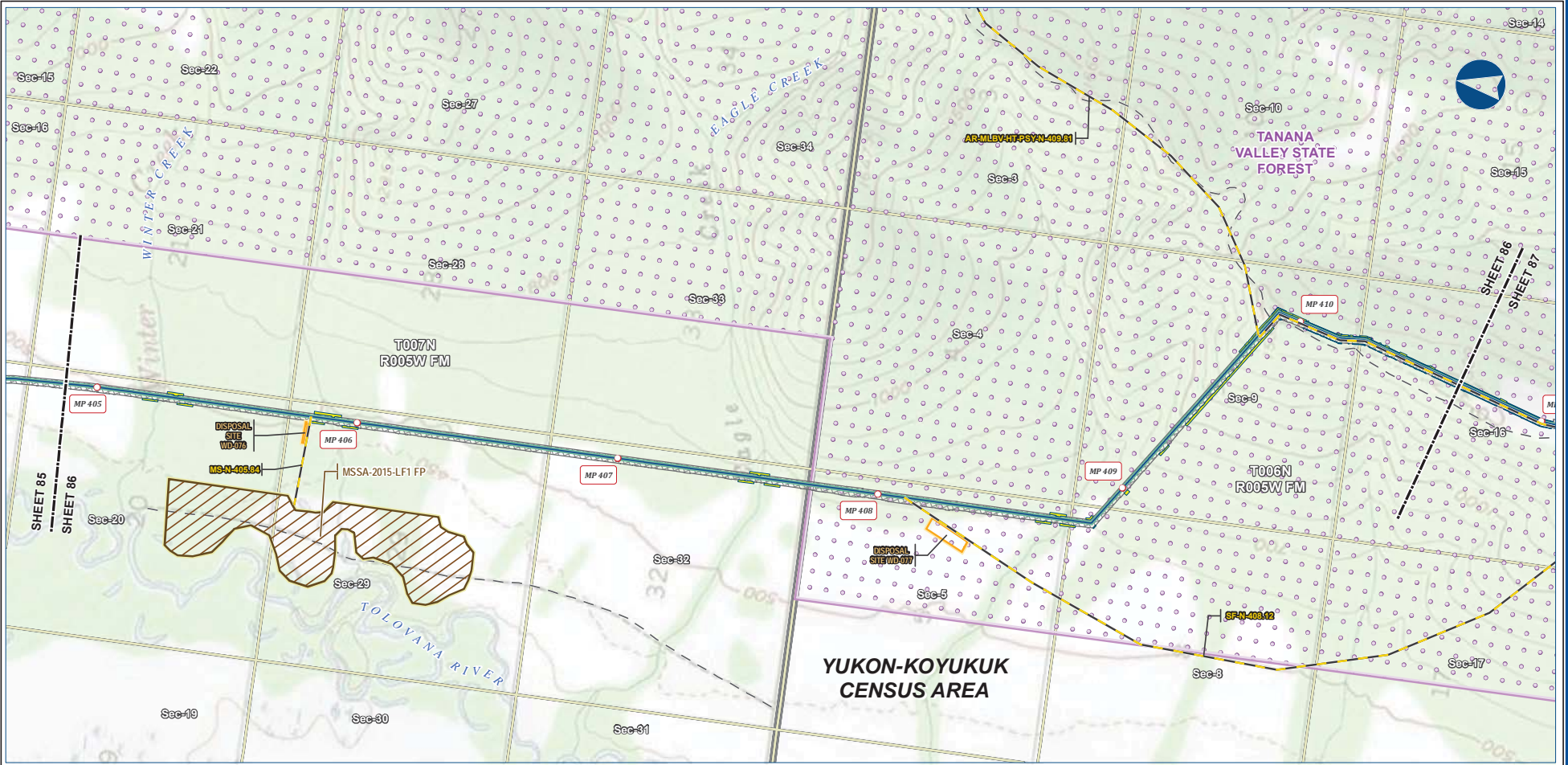
ALASKA LNG PROJECT Preliminary Facility Locations Mainline Rev C2 Route			
CENSUS AREA:	YUKON-KOYUKUK	DRAWN BY:	AGDC
STATE:	ALASKA	CHECKED BY:	
REV. NO.:	REVISION	DATE	
A	ISSUED FOR REVIEW	2017-03-10	
PRELIMINARY			
1:24,000			
DATE:	2017-03-10	PROJECTION:	NAD83 NRSR2007 ALASKAZONE4 FTUS 54392

DISCLAIMER

The information contained herein is for informational or planning purposes only. It does not nor should it be deemed to be an offer, request or proposals for rights or occupation of any kind. The Alaska LNG Project Participants and their respective officers, employees and agents, make no warranty, implied or otherwise, nor accept any liability, as to the accuracy or completeness of the information contained in these documents, drawings or electronic files. Do not remove or delete this note from document, drawing or electronic file.

Alaska LNG Project

PRELIMINARY FACILITY LOCATIONS - MAINLINE REV C2 ROUTE



B-93



Legend		EXISTING FEATURES	
Mainline Pipeline	Permanent ROW	Existing Roads	Conservation Lands
Access Road - Gravel	ATWS	Off Road Trails	Section
Disposal Site	Material Site Study Area (MSSA)	Section	Township
Disposal Site (WD-07)			

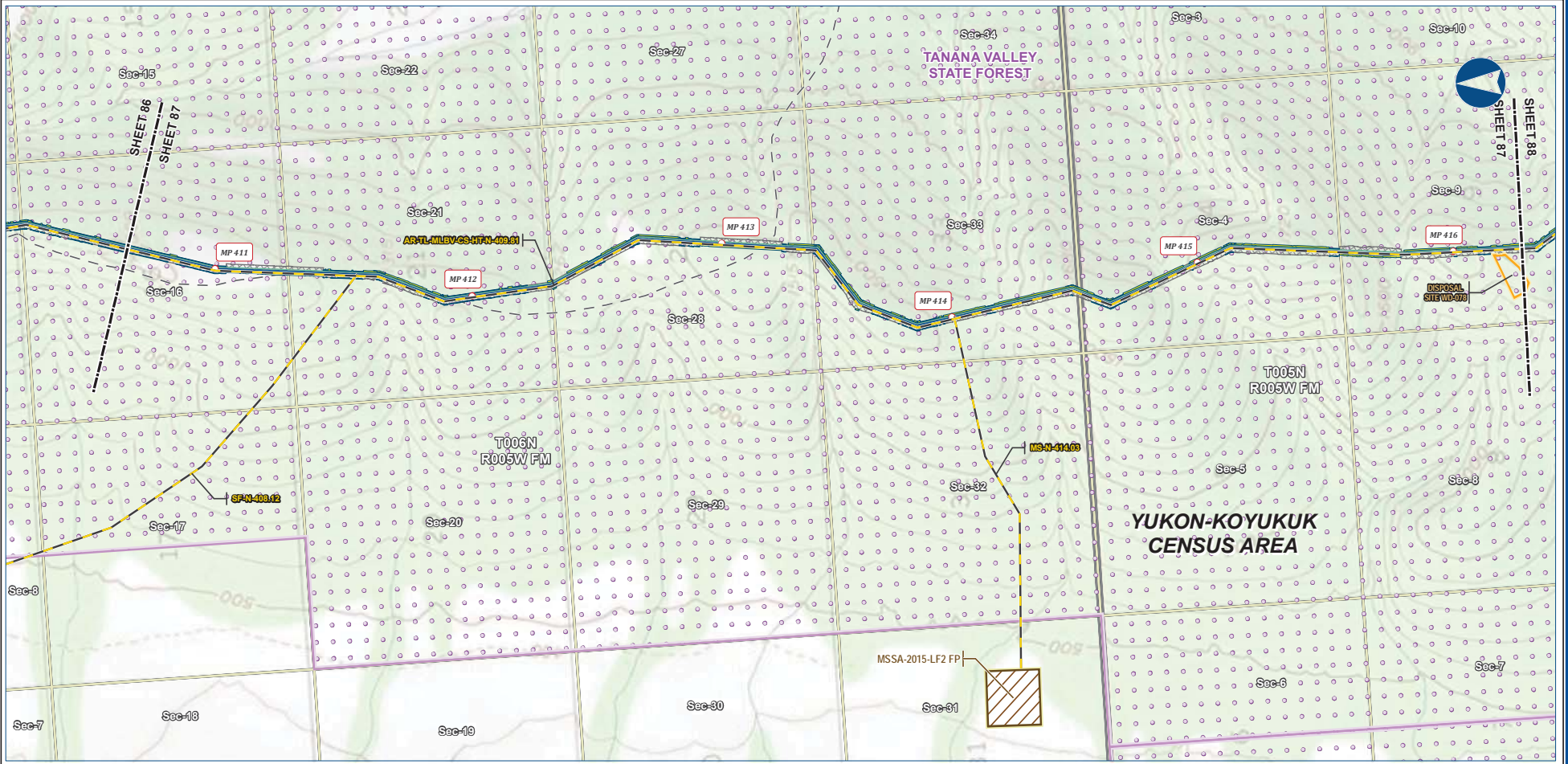
ALASKA LNG PROJECT Preliminary Facility Locations Mainline Rev C2 Route			
CENSUS AREA: YUKON-KOYUKUK	DRAWN BY: AGDC	STATE: ALASKA	CHECKED BY:
REV. NO.:	REVISION	DATE	
A	ISSUED FOR REVIEW	2017-03-10	
PRELIMINARY			
1:24,000			
DATE: 2017-03-10	PROJECTION: NAD83 NRSR2007 ALASKAZONE4 FTUS S4392	DWG: RR_1_APPENDIX_A1_MAINLINE_TOPO_REV_C2_CL	SHEET: 86

DISCLAIMER

The information contained herein is for informational or planning purposes only. It does not nor should it be deemed to be an offer, request or proposals for rights or occupation of any kind. The Alaska LNG Project Participants and their respective officers, employees and agents, make no warranty, implied or otherwise, nor accept any liability, as to the accuracy or completeness of the information contained in these documents, drawings or electronic files. Do not remove or delete this note from document, drawing or electronic file.

PRELIMINARY FACILITY LOCATIONS - MAINLINE REV C2 ROUTE

ALASKA LNG



B-94



Legend

PIPELINE	Permanent ROW	EXISTING FEATURES
Mainline Pipeline	Construction ROW	Existing Roads
Access Road - Gravel	ATWS	Off Road Trails
	Disposal Site	Conservation Lands
	Material Site Study Area (MSSA)	Section
		Township

ALASKA LNG PROJECT
Preliminary Facility Locations
Mainline Rev C2 Route

CENSUS AREA: YUKON-KOYUKUK	DRAWN BY: AGDC
STATE: ALASKA	CHECKED BY:
REV. NO.:	REVISION
A	ISSUED FOR REVIEW
	DATE
	2017-03-10
PRELIMINARY	
1:24,000	
0 5 10 Miles	
DATE: 2017-03-10	PROJECTION: NAD83 NSRS2007 ALASKAZONE4 FTUS 54392

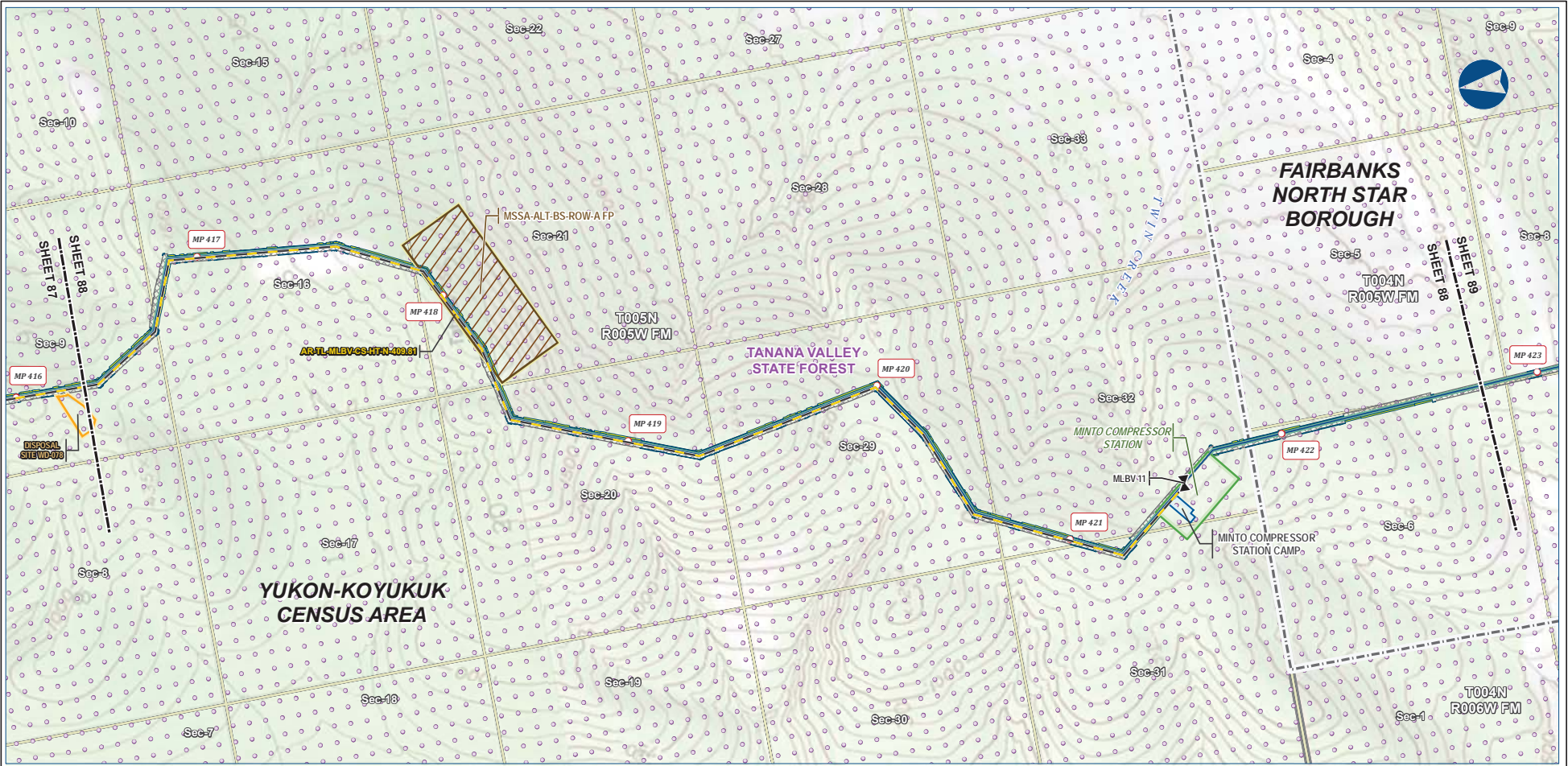
DISCLAIMER

The information contained herein is for informational or planning purposes only. It does not nor should it be deemed to be an offer, request or proposals for rights or occupation of any kind. The Alaska LNG Project Participants and their respective officers, employees and agents, make no warranty, implied or otherwise, nor accept any liability, as to the accuracy or completeness of the information contained in these documents, drawings or electronic files. Do not remove or delete this note from document, drawing or electronic file.

Alaska LNG Project

PRELIMINARY FACILITY LOCATIONS - MAINLINE REV C2 ROUTE

ALASKA LNG



B-95



Legend		EXISTING FEATURES	
Mainline Pipeline	Permanent ROW	Existing Roads	Borough / Census Area
Access Road - Gravel	Construction ROW	Conservation Lands	Section
Mainline Blockvale	ATWS	Camp	Township
	Compressor Station	Disposal Site	
	Camp	Material Site Study Area (MSSA)	

ALASKA LNG PROJECT Preliminary Facility Locations Mainline Rev C2 Route			
CENSUS AREA:	YUKON-KOYUKUK	DRAWN BY:	AGDC
STATE:	ALASKA	CHECKED BY:	
REV. NO.:	REVISION	DATE	
A	ISSUED FOR REVIEW	2017-03-10	
PRELIMINARY			
1:24,000			
DATE:	2017-03-10	PROJECTION:	NAD83 NSRS2007 ALASKAZONE4 FTUS S4392

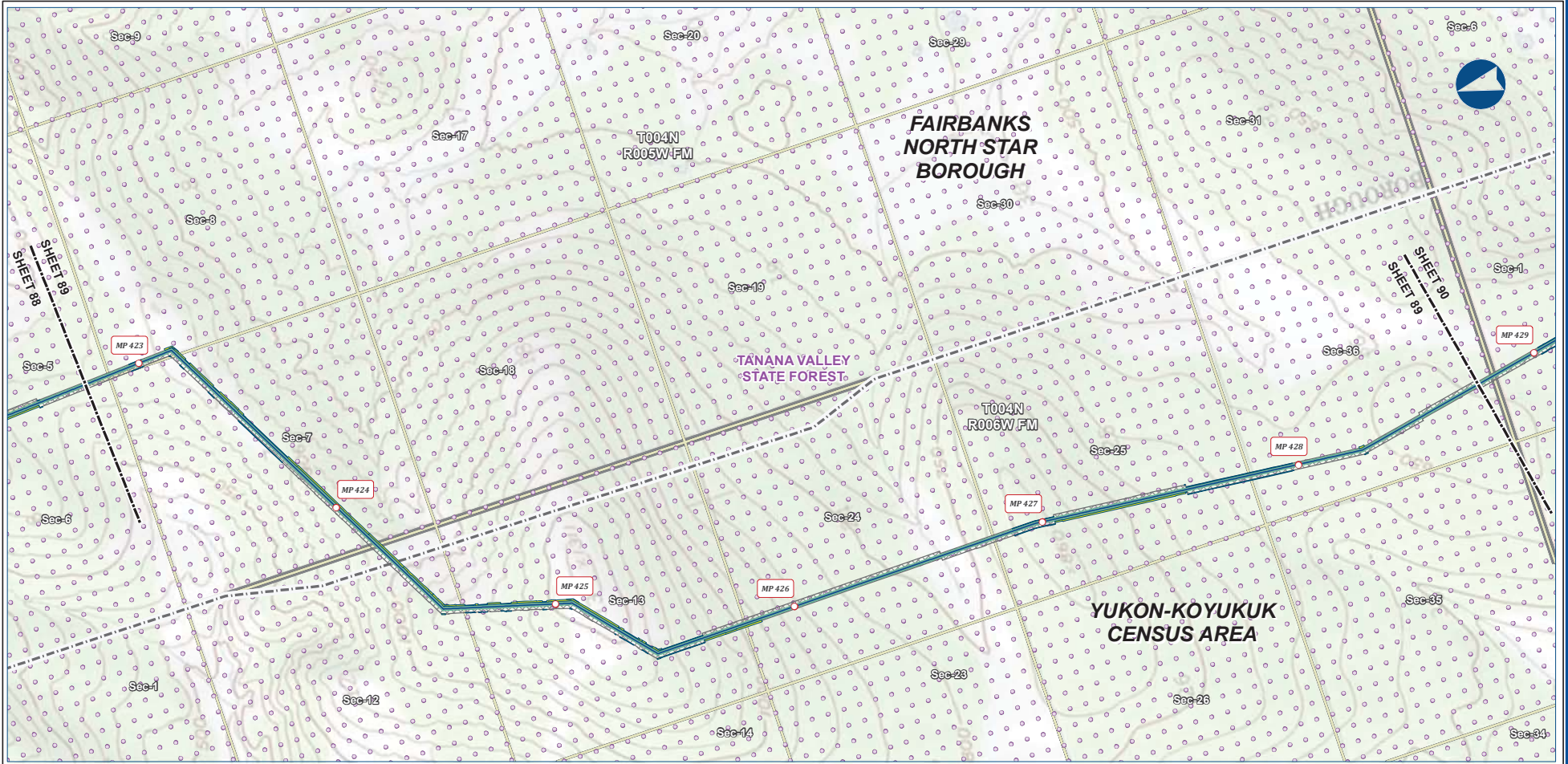
DISCLAIMER

The information contained herein is for informational or planning purposes only. It does not nor should it be deemed to be an offer, request or proposals for rights or occupation of any kind. The Alaska LNG Project Participants and their respective officers, employees and agents, make no warranty, implied or otherwise, nor accept any liability, as to the accuracy or completeness of the information contained in these documents, drawings or electronic files. Do not remove or delete this note from document, drawing or electronic file.

Alaska LNG Project

PRELIMINARY FACILITY LOCATIONS - MAINLINE REV C2 ROUTE

ALASKA LNG



B-96



Legend

Mainline Pipeline	Permanent ROW	Existing Roads
Construction ROW	ATWS	Borough / Census Area
		Conservation Lands
		Section
		Township

ALASKA LNG PROJECT
Preliminary Facility Locations
Mainline Rev C2 Route

CENSUS AREA: YUKON-KOYUKUK	DRAWN BY: AGDC	
STATE: ALASKA	CHECKED BY:	
REV. NO.:	REVISION	DATE
A	ISSUED FOR REVIEW	2017-03-10
PRELIMINARY		
1:24,000		
0 5 10 Miles		
DATE: 2017-03-10	PROJECTION: NAD83 NSRS2007 ALASKAZONE4 FTUS 54392	DWG: RR-1_APPENDIX_A1_MAINLINE_TOPO_REV_C2_CL

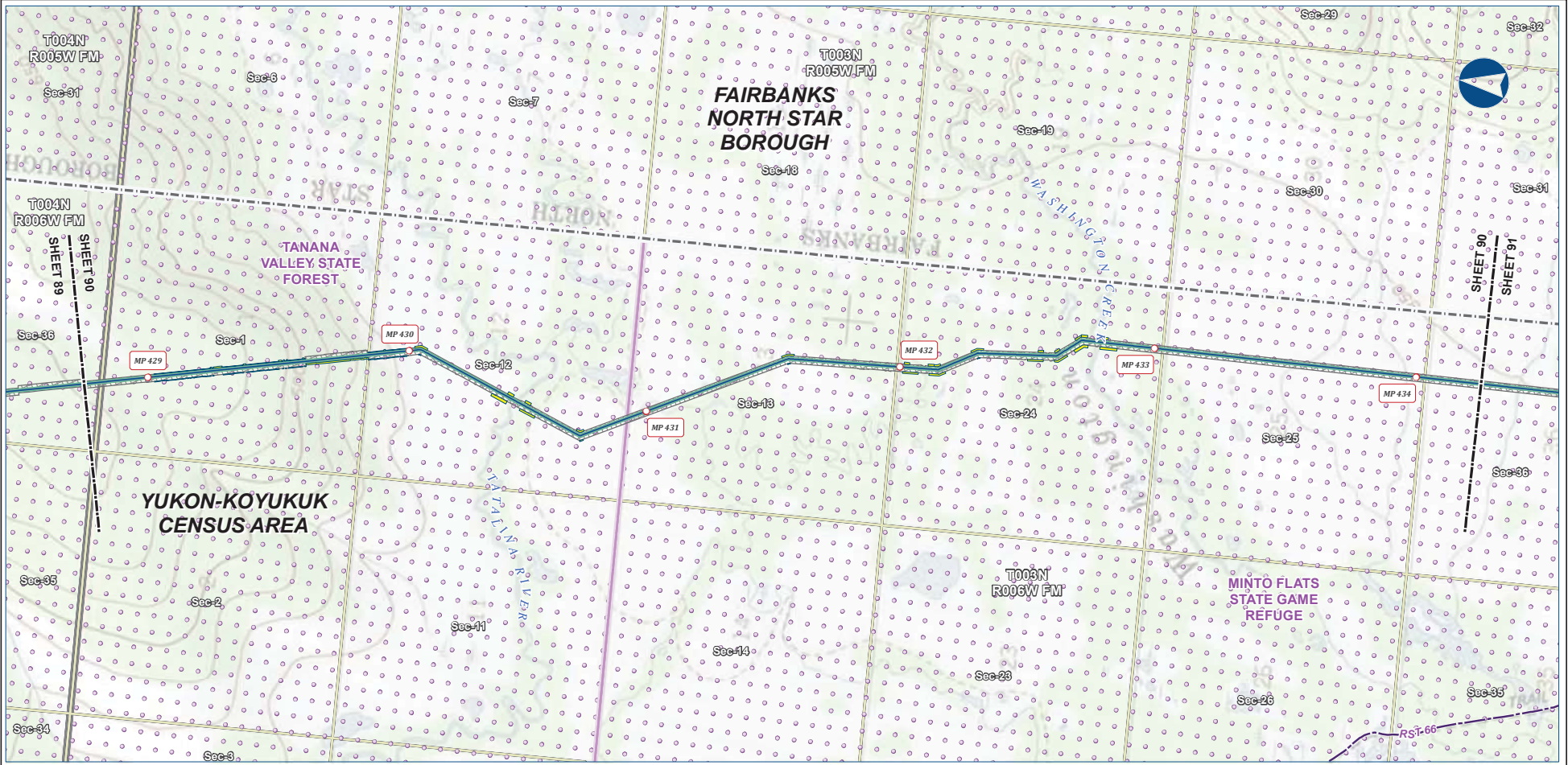
DISCLAIMER

The information contained herein is for informational or planning purposes only. It does not nor should it be deemed to be an offer, request or proposals for rights or occupation of any kind. The Alaska LNG Project Participants and their respective officers, employees and agents, make no warranty, implied or otherwise, nor accept any liability, as to the accuracy or completeness of the information contained in these documents, drawings or electronic files. Do not remove or delete this note from document, drawing or electronic file.

Alaska LNG Project

PRELIMINARY FACILITY LOCATIONS - MAINLINE REV C2 ROUTE

ALASKA LNG



B-97



Legend

PIPELINE
 - Mainline Pipeline

EXISTING FEATURES
 - Existing Roads
 - Revised Statute 2477 Trail
 - Borough / Census Area
 - Conservation Lands
 - Section
 - Township

PERMANENT ROW
 - Permanent ROW

CONSTRUCTION ROW
 - Construction ROW

ATWS
 - ATWS

ALASKA LNG PROJECT
 Preliminary Facility Locations
 Mainline Rev C2 Route

CENSUS AREA: YUKON-KOYUKUK	DRAWN BY: AGDC
STATE: ALASKA	CHECKED BY:
REV. NO.:	REVISION
A	ISSUED FOR REVIEW
	DATE
	2017-03-10
PRELIMINARY	
1:24,000	
0 5 10 Miles	
DATE: 2017-03-10	PROJECTION: NAD83 NSRS2007 ALASKAZONE4 FTUS S4392

DISCLAIMER

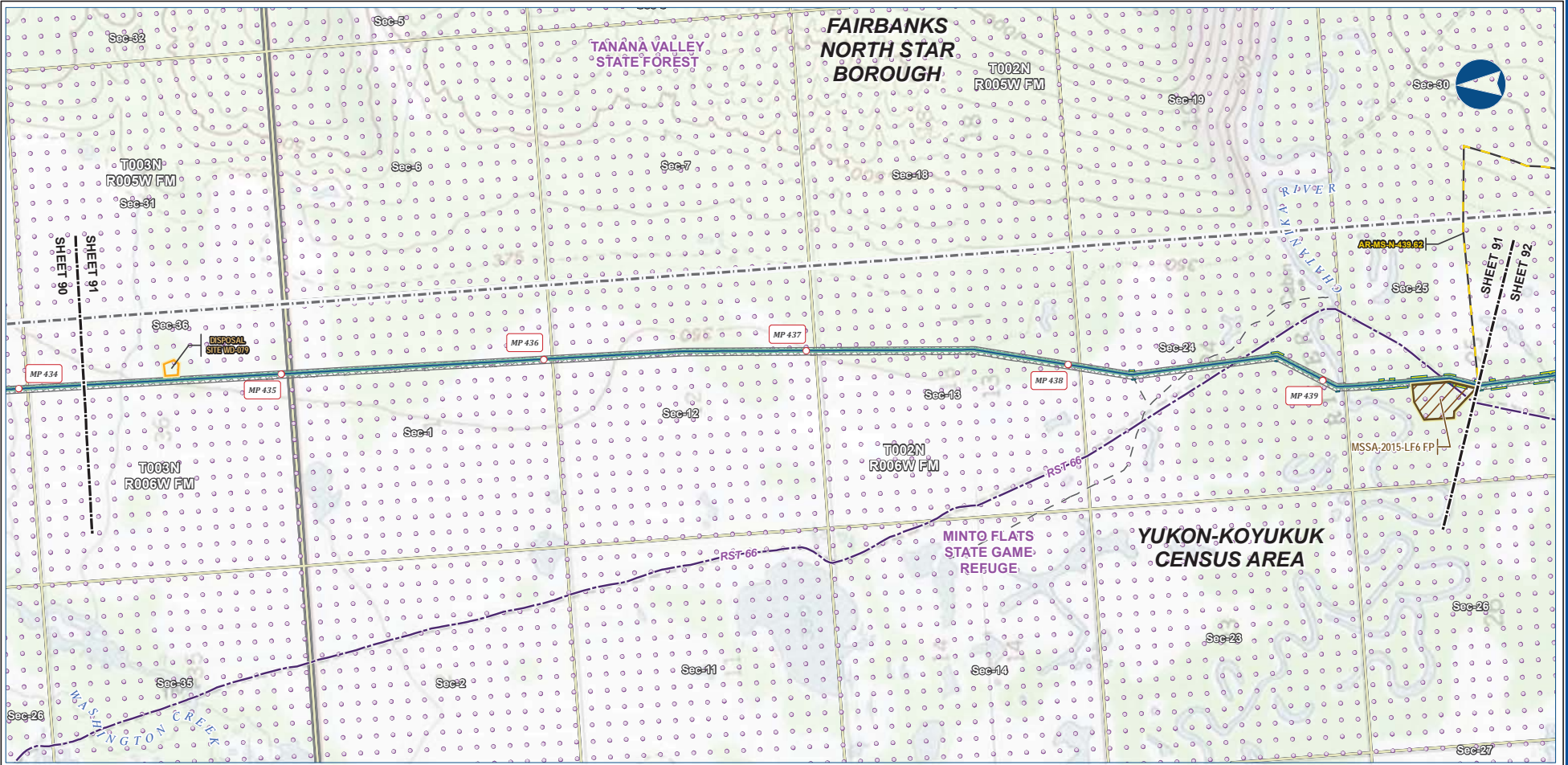
The information contained herein is for informational or planning purposes only. It does not nor should it be deemed to be an offer, request or proposals for rights or occupation of any kind. The Alaska LNG Project Participants and their respective officers, employees and agents, make no warranty, implied or otherwise, nor accept any liability, as to the accuracy or completeness of the information contained in these documents, drawings or electronic files. Do not remove or delete this note from document, drawing or electronic file.

DWG: RR-1_APPENDIX_A1_MAINLINE_TOPO_REV_C2_CL SHEET: 90

Alaska LNG Project

PRELIMINARY FACILITY LOCATIONS - MAINLINE REV C2 ROUTE

ALASKA LNG



B-98



Legend

PIPELINE	Permanent ROW	EXISTING FEATURES
Mainline Pipeline	Construction ROW	Existing Roads
Access Road - Gravel	ATWS	Revised Statute 2477 Trail
	Disposal Site	Off Road Trails
	Material Site Study Area (MSSA)	Borough / Census Area
		Conservation Lands
		Section
		Township

ALASKA LNG PROJECT
Preliminary Facility Locations
Mainline Rev C2 Route

CENSUS AREA: YUKON-KOYUKUK	DRAWN BY: AGDC	
STATE: ALASKA	CHECKED BY:	
REV. NO.:	REVISION	DATE
A	ISSUED FOR REVIEW	2017-03-10
PRELIMINARY		
1:24,000		
DATE: 2017-03-10 PROJECTION: NAD83 NSRS2007 ALASKAZONE4 FTUS 54392		

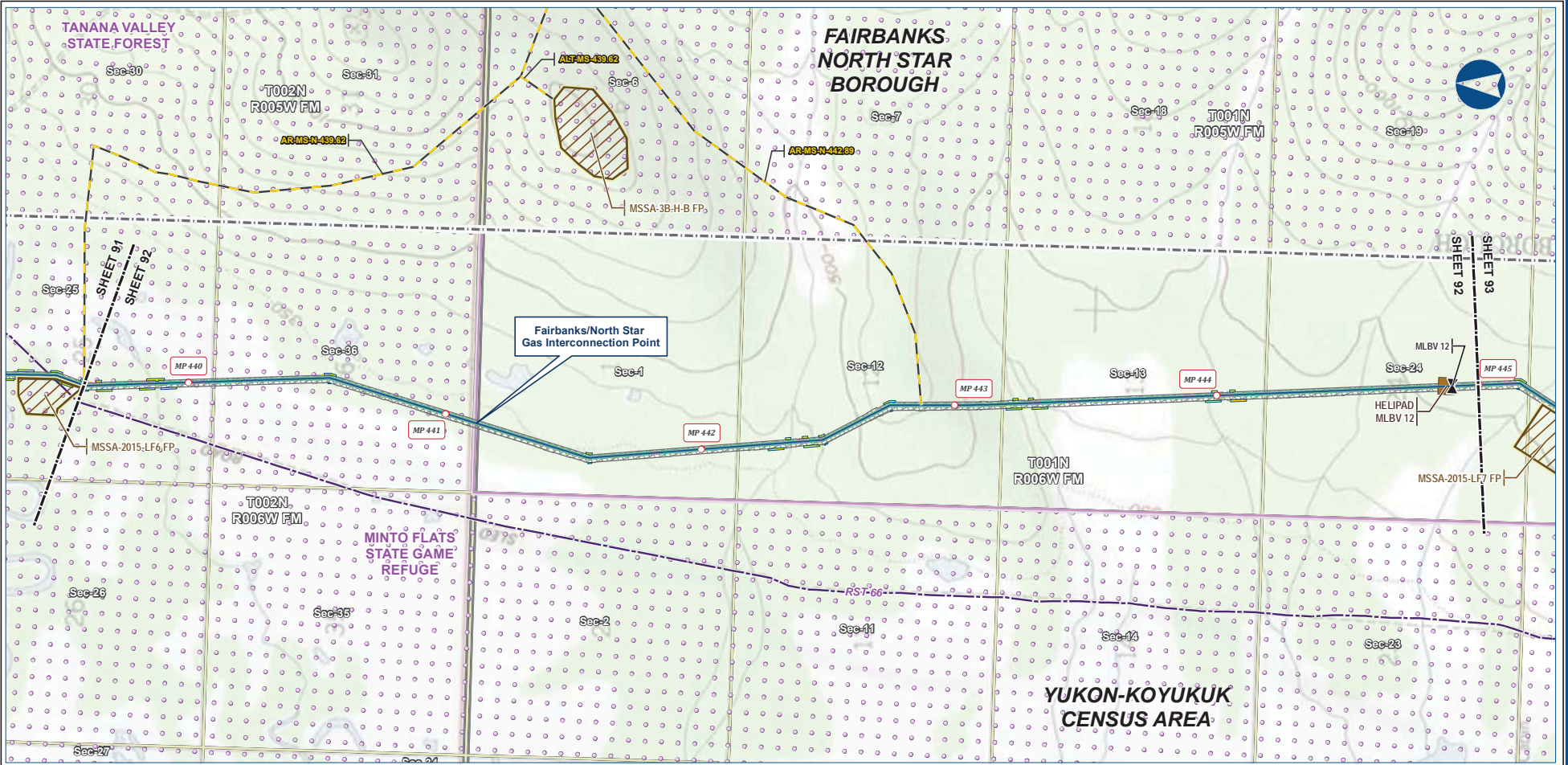
DISCLAIMER

The information contained herein is for informational or planning purposes only. It does not nor should it be deemed to be an offer, request or proposals for rights or occupation of any kind. The Alaska LNG Project Participants and their respective officers, employees and agents, make no warranty, implied or otherwise, nor accept any liability, as to the accuracy or completeness of the information contained in these documents, drawings or electronic files. Do not remove or delete this note from document, drawing or electronic file.

Alaska LNG Project

PRELIMINARY FACILITY LOCATIONS - MAINLINE REV C2 ROUTE

ALASKA LNG



B-99



Legend

Mainline Pipeline	Permanent ROW	Existing Roads
Construction ROW	ATWS	Revised Statute 2477 Trail
Access Road - Gravel	Material Site Study Area (MSSA)	Borough / Census Area
Mainline Blockvalve		Conservation Lands
Helipad		Section
		Township

ALASKA LNG PROJECT
Preliminary Facility Locations
Mainline Rev C2 Route

CENSUS AREA: YUKON-KOYUKUK	DRAWN BY: AGDC
STATE: ALASKA	CHECKED BY:
REV. NO.: A	ISSUED FOR REVIEW
REVISION	DATE
ISSUED FOR REVIEW	2017-03-10
PRELIMINARY	
1:24,000	
DATE: 2017-03-10	PROJECTION: NAD83 NSRS2007 ALASKAZONE4 FTUS 54392

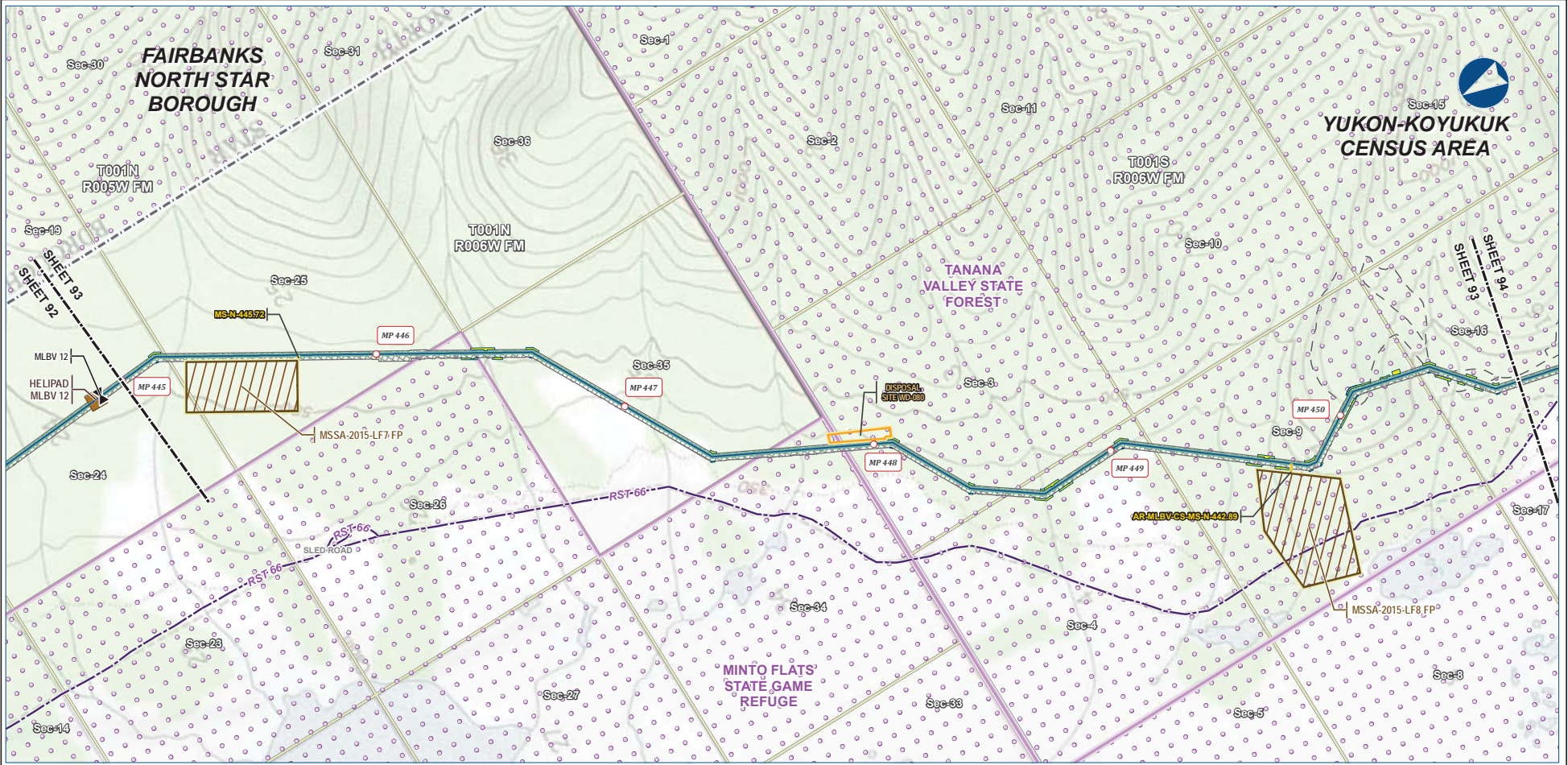
DISCLAIMER

The information contained herein is for informational or planning purposes only. It does not nor should it be deemed to be an offer, request or proposals for rights or occupation of any kind. The Alaska LNG Project Participants and their respective officers, employees and agents, make no warranty, implied or otherwise, nor accept any liability, as to the accuracy or completeness of the information contained in these documents, drawings or electronic files. Do not remove or delete this note from document, drawing or electronic file.

Alaska LNG Project

PRELIMINARY FACILITY LOCATIONS - MAINLINE REV C2 ROUTE

ALASKA LNG



B-100



PIPELINE		EXISTING FEATURES	
	Mainline Pipeline		Permanent ROW
	Access Road - Gravel		Existing Roads
	Mainline Blockvalve		Revised Statute 2477 Trail
	Helipad		Off Road Trails
	Construction ROW		Borough / Census Area
	ATWS		Conservation Lands
	Disposal Site		Section
	Material Site Study Area (MSSA)		Township

ALASKA LNG PROJECT Preliminary Facility Locations Mainline Rev C2 Route			
CENSUS AREA:	YUKON-KOYUKUK	DRAWN BY:	AGDC
STATE:	ALASKA	CHECKED BY:	
REV. NO.	REVISION	DATE	
A	ISSUED FOR REVIEW	2017-03-10	
PRELIMINARY			
1:24,000			
0 5 10 Miles			
DATE:	2017-03-10	PROJECTION:	NAD83 NSRS2007 ALASKAZONE4 FTUS 54392

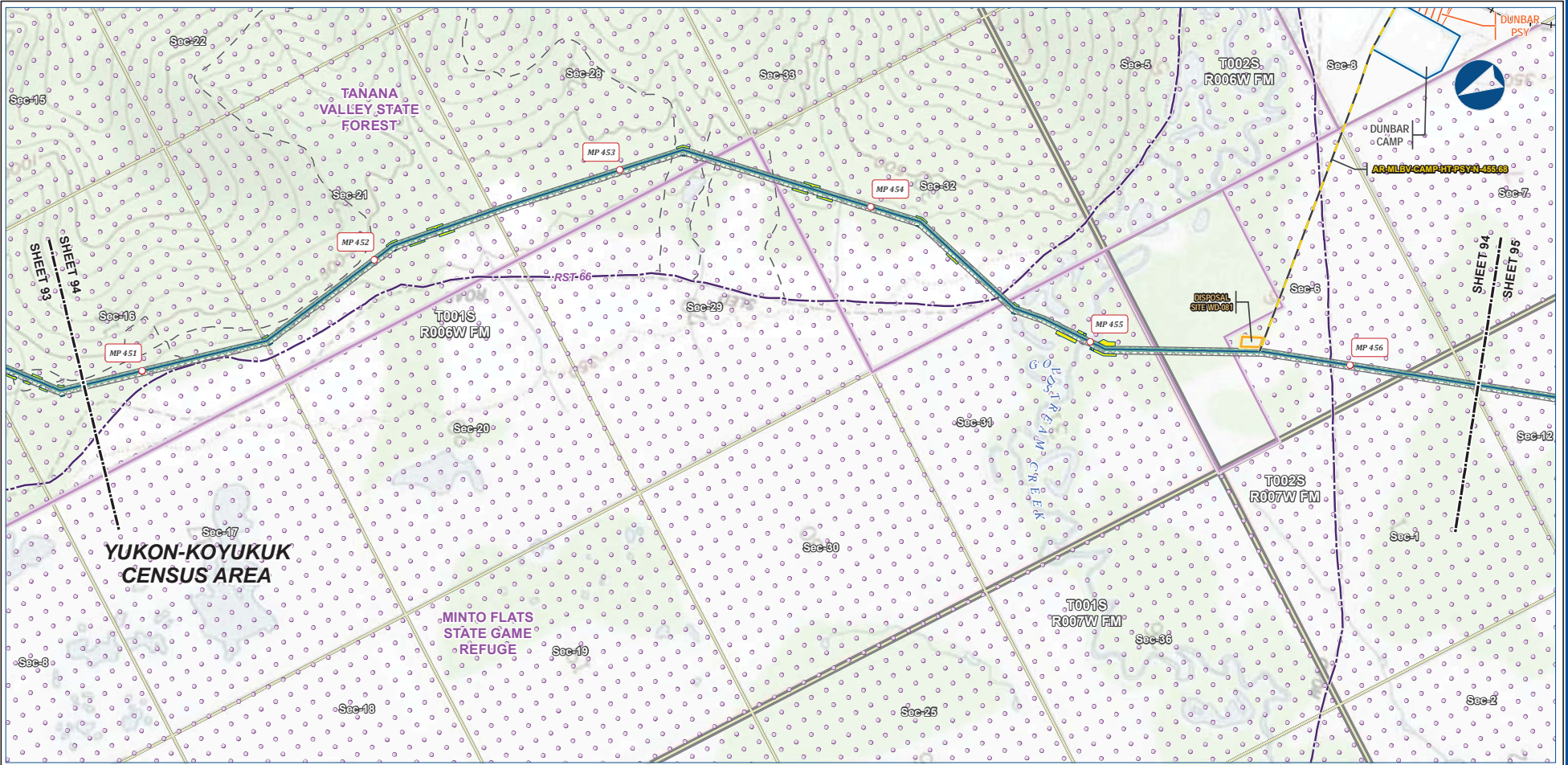
DISCLAIMER

The information contained herein is for informational or planning purposes only. It does not nor should it be deemed to be an offer, request or proposals for rights or occupation of any kind. The Alaska LNG Project Participants and their respective officers, employees and agents, make no warranty, implied or otherwise, nor accept any liability, as to the accuracy or completeness of the information contained in these documents, drawings or electronic files. Do not remove or delete this note from document, drawing or electronic file.

Alaska LNG Project

PRELIMINARY FACILITY LOCATIONS - MAINLINE REV C2 ROUTE

ALASKA LNG



B-101



Legend		EXISTING FEATURES	
Mainline Pipeline	Permanent ROW	Existing Roads	Railroad
Access Road - Gravel	Construction ROW	Revised Statute 2477 Trail	Off Road Trails
	ATWS	Conservation Lands	Section
	Off ROW Camp	Disposal Site	Township
	Pipe Storage Yard (PSY)		

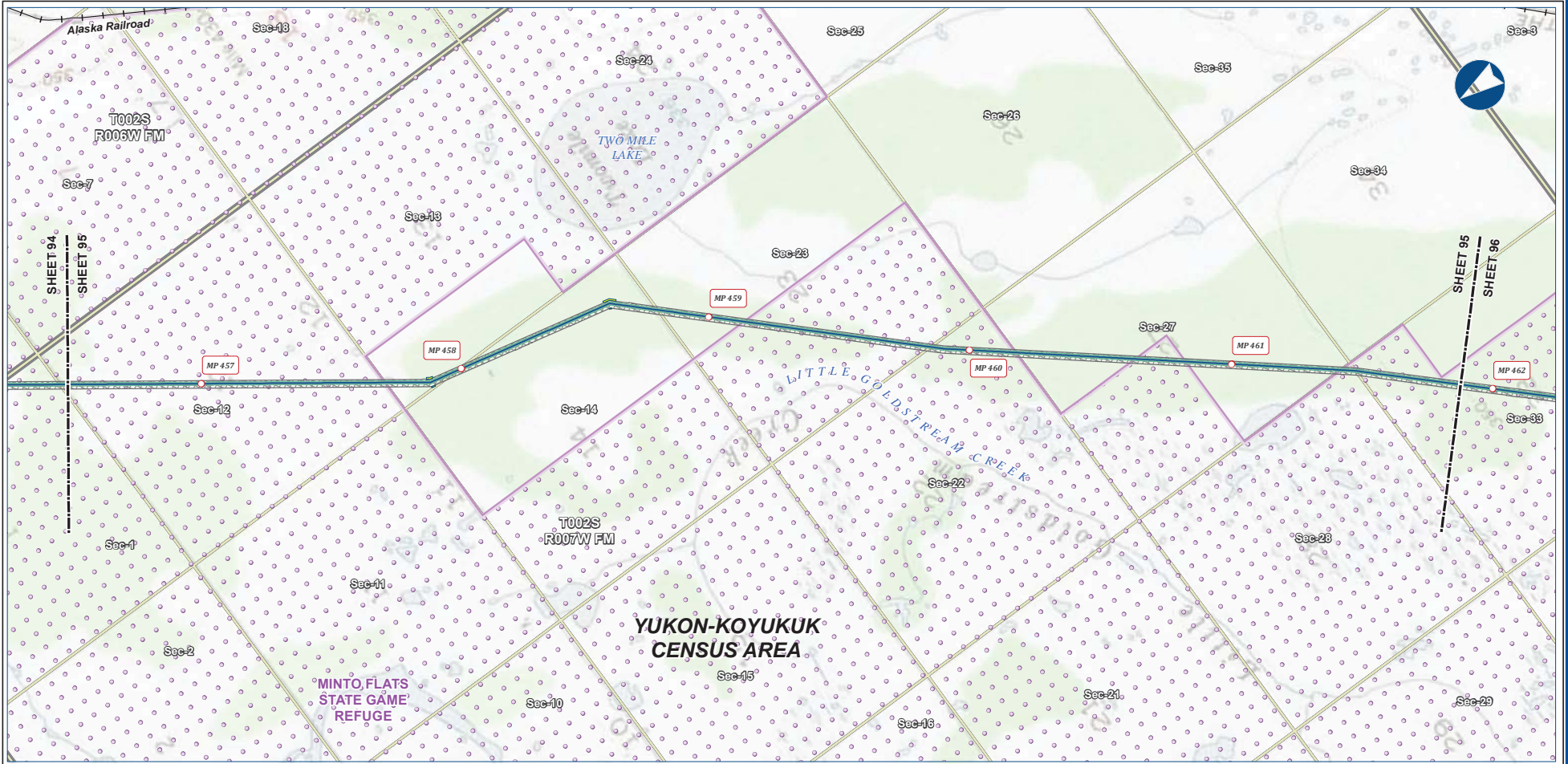
ALASKA LNG PROJECT Preliminary Facility Locations Mainline Rev C2 Route			
CENSUS AREA:	YUKON-KOYUKUK	DRAWN BY:	AGDC
STATE:	ALASKA	CHECKED BY:	
REV. NO.	REVISION	DATE	
A	ISSUED FOR REVIEW	2017-03-10	
PRELIMINARY			
1:24,000			
DATE: 2017-03-10	PROJECTION: NAD83 NSRS2007 ALASKAZONE4 FTUS S4392	DWG: RR-1_APPENDIX_A1_MAINLINE_TOPO_REV_C2_CL	SHEET: 94

DISCLAIMER
The information contained herein is for informational or planning purposes only. It does not nor should it be deemed to be an offer, request or proposals for rights or occupation of any kind. The Alaska LNG Project Participants and their respective officers, employees and agents, make no warranty, implied or otherwise, nor accept any liability, as to the accuracy or completeness of the information contained in these documents, drawings or electronic files. Do not remove or delete this note from document, drawing or electronic file.

Alaska LNG Project

PRELIMINARY FACILITY LOCATIONS - MAINLINE REV C2 ROUTE

ALASKA LNG



B-102



Legend		EXISTING FEATURES	
Mainline Pipeline	Permanent ROW	Existing Roads	Railroad
Construction ROW	ATWS	Conservation Lands	Section
		Township	

ALASKA LNG PROJECT Preliminary Facility Locations Mainline Rev C2 Route			
CENSUS AREA:	YUKON-KOYUKUK	DRAWN BY:	AGDC
STATE:	ALASKA	CHECKED BY:	
REV. NO.:	REVISION	DATE	
A	ISSUED FOR REVIEW	2017-03-10	
PRELIMINARY			
1:24,000			
DATE:	2017-03-10	PROJECTION:	NAD83 NRSR2007 ALASKAZONE4 FTUS 54392

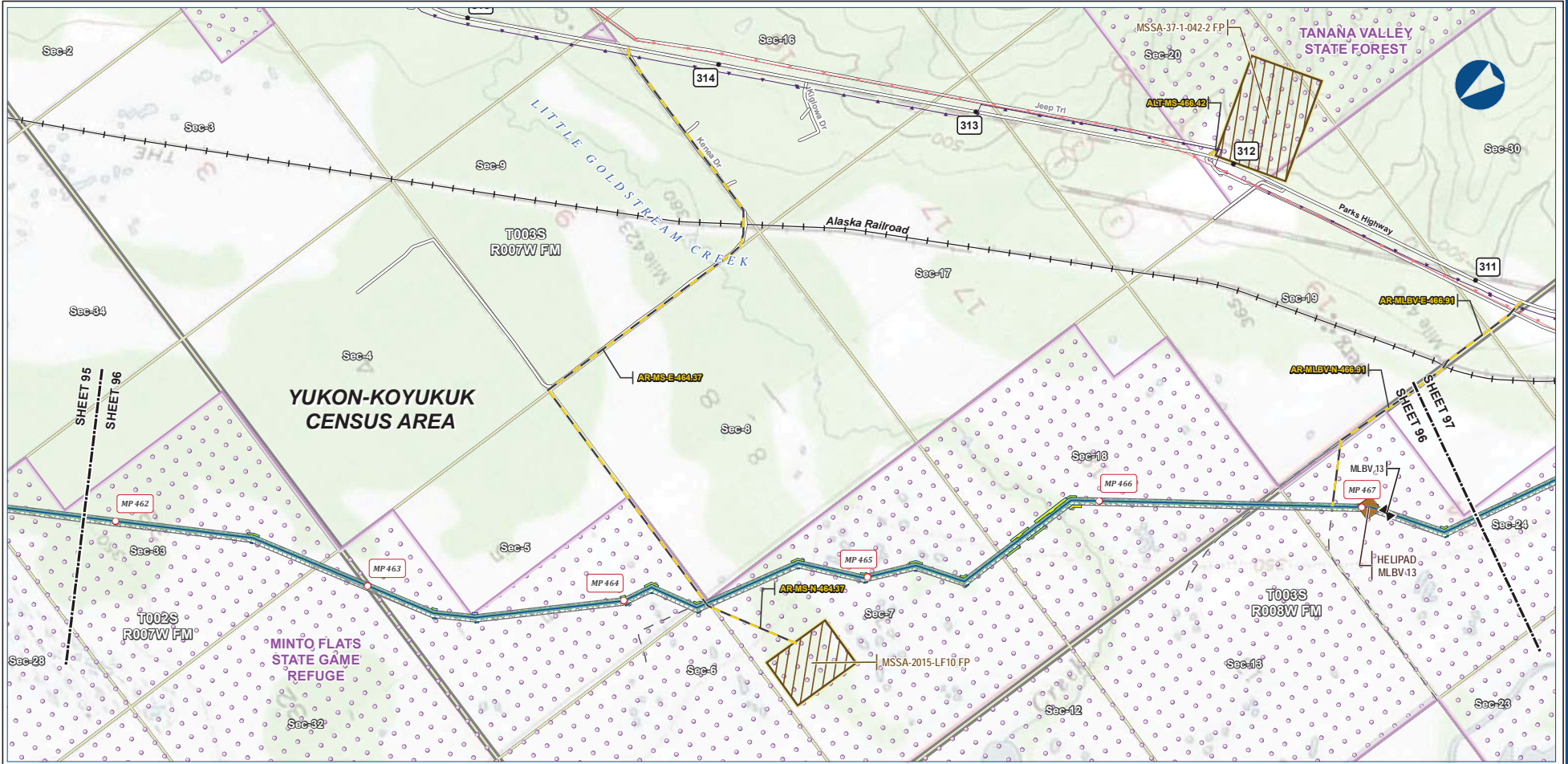
DISCLAIMER

The information contained herein is for informational or planning purposes only. It does not nor should it be deemed to be an offer, request or proposals for rights or occupation of any kind. The Alaska LNG Project Participants and their respective officers, employees and agents, make no warranty, implied or otherwise, nor accept any liability, as to the accuracy or completeness of the information contained in these documents, drawings or electronic files. Do not remove or delete this note from document, drawing or electronic file.

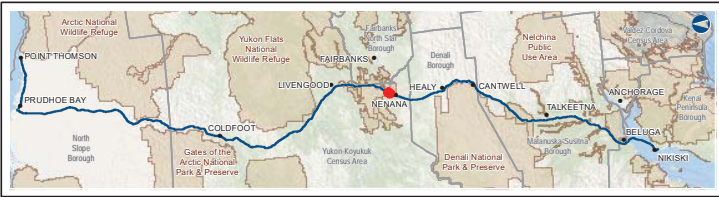
Alaska LNG Project

PRELIMINARY FACILITY LOCATIONS - MAINLINE REV C2 ROUTE

ALASKA LNG



B-103



Legend		EXISTING FEATURES	
Permanent ROW	Mainline Pipeline	Existing Roads	Railroad
Construction ROW	Access Road - Gravel	Off Road Trails	Buried Cable
ATWS	Mainline Blockvalve	Overhead Powerline	Conservation Lands
Material Site Study Area (MSSA)	Helipad	Section	Township

ALASKA LNG PROJECT Preliminary Facility Locations Mainline Rev C2 Route			
CENSUS AREA:	YUKON-KOYUKUK	DRAWN BY:	AGDC
STATE:	ALASKA	CHECKED BY:	
REV. NO.:	REVISION	DATE	
A	ISSUED FOR REVIEW	2017-03-10	
PRELIMINARY			
1:24,000			
DATE:	2017-03-10	PROJECTION:	NAD83 NSRS2007 ALASKAZONE4 FTUS 54392

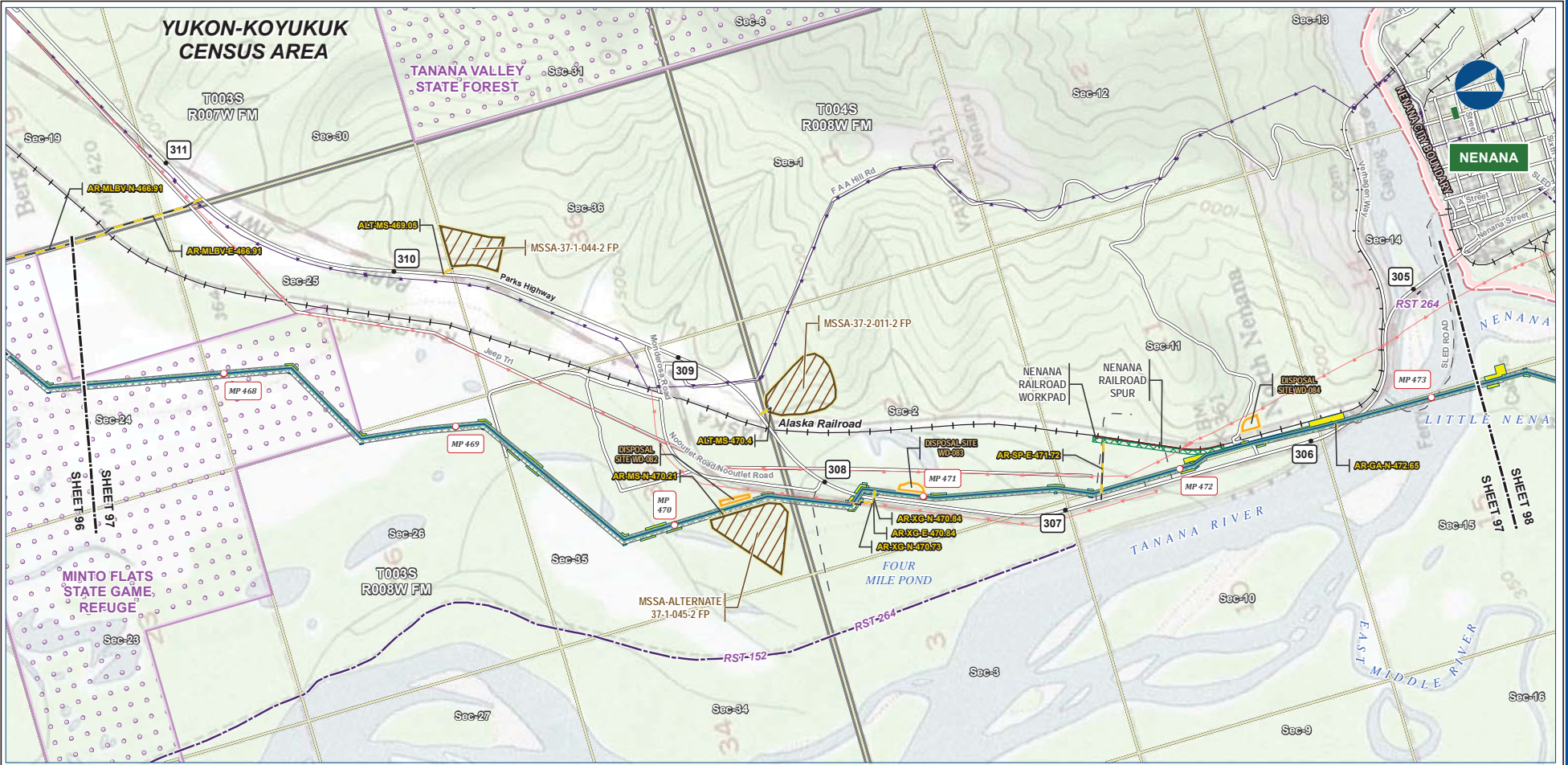
DISCLAIMER

The information contained herein is for informational or planning purposes only. It does not nor should it be deemed to be an offer, request or proposals for rights or occupation of any kind. The Alaska LNG Project Participants and their respective officers, employees and agents, make no warranty, implied or otherwise, nor accept any liability, as to the accuracy or completeness of the information contained in these documents, drawings or electronic files. Do not remove or delete this note from document, drawing or electronic file.

Alaska LNG Project

PRELIMINARY FACILITY LOCATIONS - MAINLINE REV C2 ROUTE

ALASKA LNG



B-104



PIPELINE		EXISTING FEATURES	
	Mainline Pipeline		Existing Roads
	Construction ROW		Railroad
	Access Road - Gravel		Revised Statute 2477 Trail
	Mainline Blockvalve		Off Road Trails
	Permanent ROW		Buried Cable
	ATWS		Overhead Powerline
	Railroad Workpad		Incorporated City Boundary
	Railroad Spur		Conservation Lands
	Disposal Site		Alaska DOT Place Names
	Material Site Study Area (MSSA)		Section
			Township

ALASKA LNG PROJECT Preliminary Facility Locations Mainline Rev C2 Route			
CENSUS AREA:	YUKON-KOYUKUK	DRAWN BY:	AGDC
STATE:	ALASKA	CHECKED BY:	
REV. NO.:	REVISION	DATE	
A	ISSUED FOR REVIEW	2017-03-10	
PRELIMINARY			
1:24,000			
DATE:	2017-03-10	PROJECTION:	NAD83 NSRS2007 ALASKAZONE4 FTUS 54392

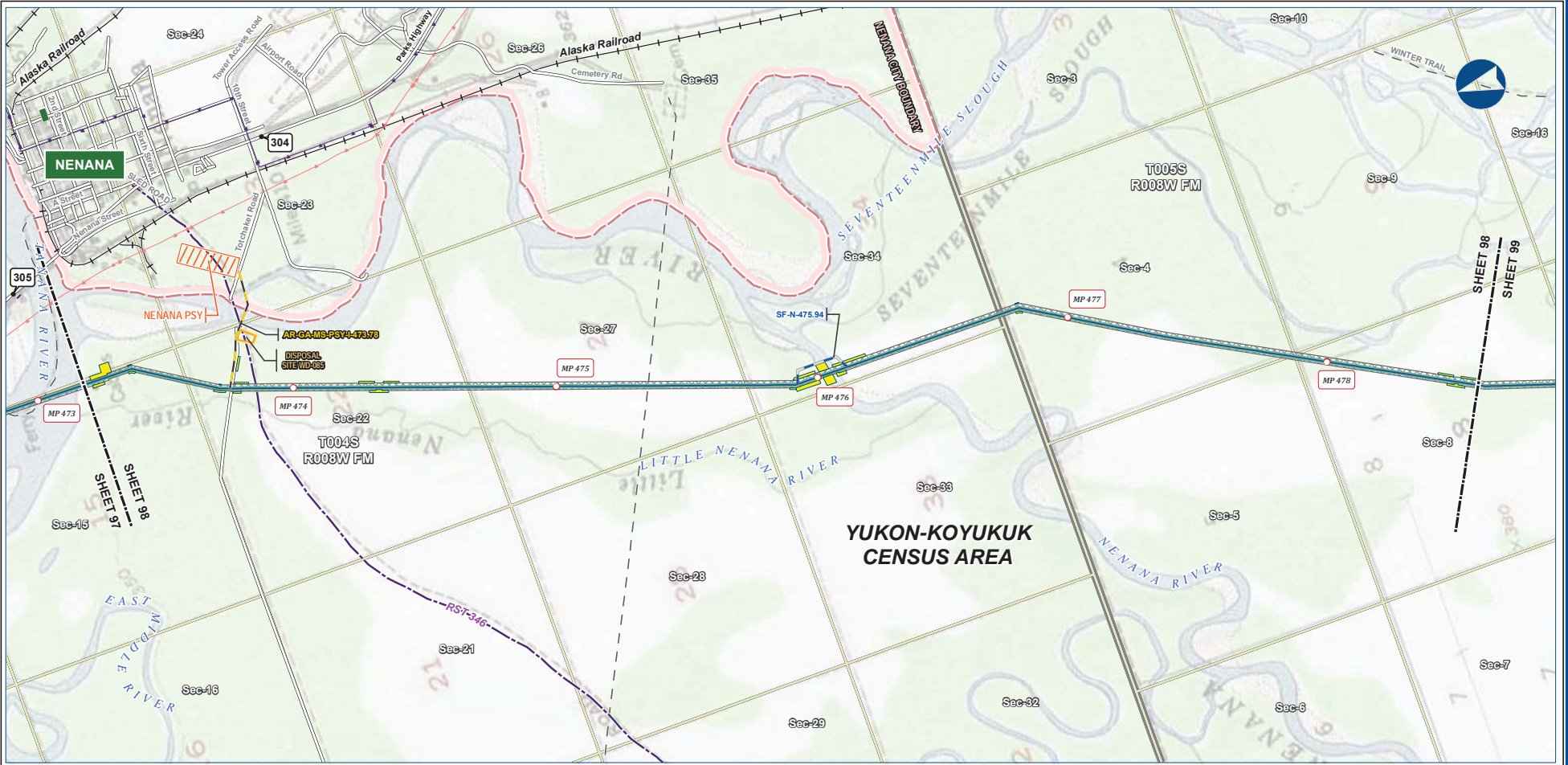
DISCLAIMER

The information contained herein is for informational or planning purposes only. It does not nor should it be deemed to be an offer, request or proposals for rights or occupation of any kind. The Alaska LNG Project Participants and their respective officers, employees and agents, make no warranty, implied or otherwise, nor accept any liability, as to the accuracy or completeness of the information contained in these documents, drawings or electronic files. Do not remove or delete this note from document, drawing or electronic file.

DWG: RR-1_APPENDIX_A1_MAINLINE_TOPO_REV_C2_CL SHEET: 97

Alaska LNG Project

PRELIMINARY FACILITY LOCATIONS - MAINLINE REV C2 ROUTE



B-105



Legend		EXISTING FEATURES	
Mainline Pipeline	Permanent ROW	Existing Roads	Railroad
Access Road - Gravel	Construction ROW	Revised Statute 2477 Trail	Off Road Trails
Access Road - Ice	ATWS	Buried Cable	Overhead Powerline
Pipe Storage Yard (PSY)	Disposal Site	Incorporated City Boundary	Alaska DOT Place Names
		Section	Township

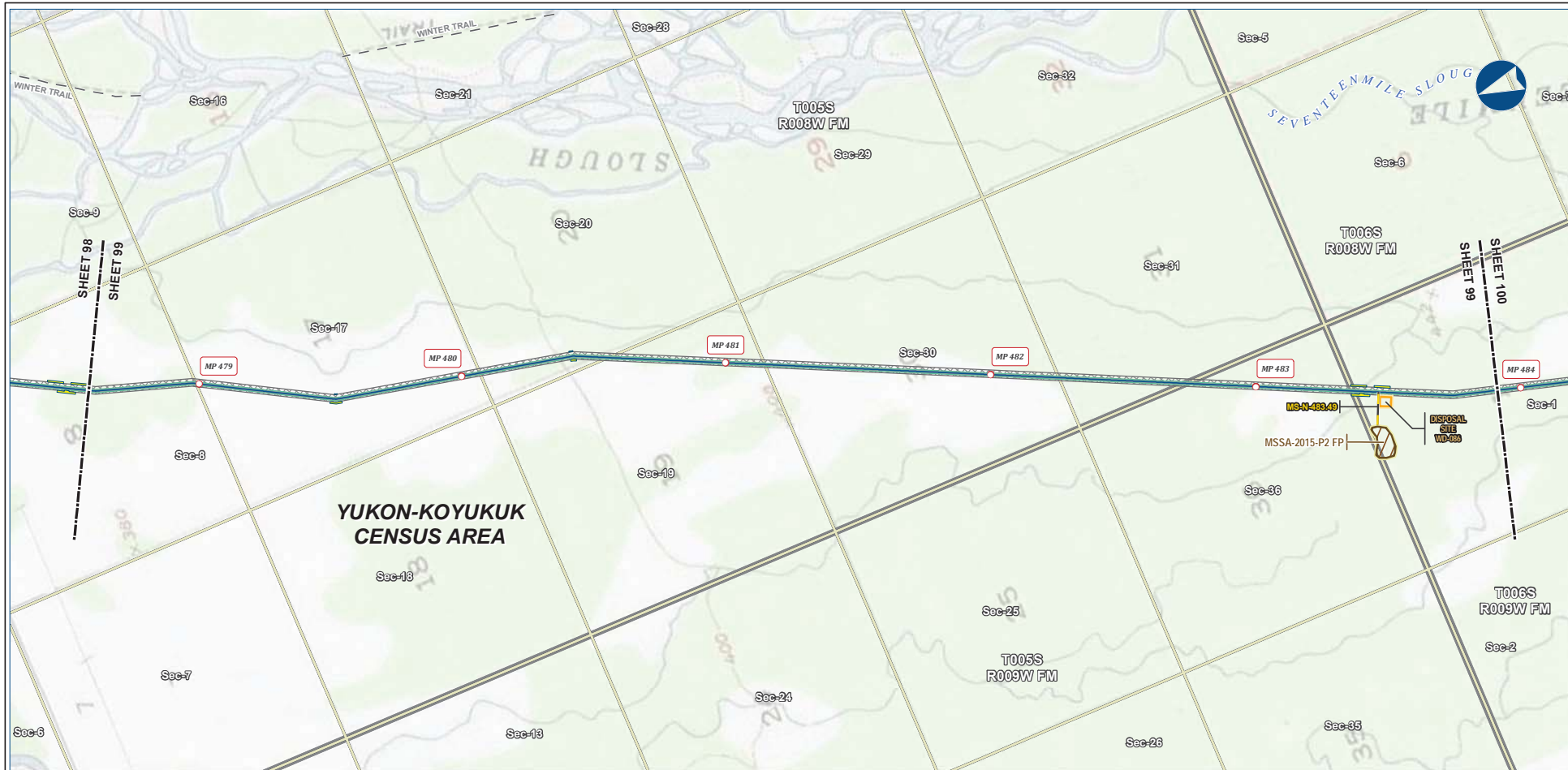
ALASKA LNG PROJECT Preliminary Facility Locations Mainline Rev C2 Route			
CENSUS AREA:	YUKON-KOYUKUK	DRAWN BY:	AGDC
STATE:	ALASKA	CHECKED BY:	
REV. NO.:	REVISION	DATE	
A	ISSUED FOR REVIEW	2017-03-10	
PRELIMINARY			
1:24,000			
DATE:	2017-03-10	PROJECTION:	NAD83 NSRS2007 ALASKAZONE4 FTUS 54392

DISCLAIMER

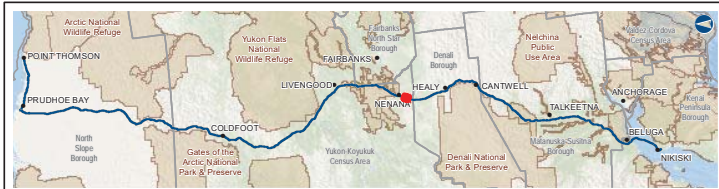
The information contained herein is for informational or planning purposes only. It does not nor should it be deemed to be an offer, request or proposals for rights or occupation of any kind. The Alaska LNG Project Participants and their respective officers, employees and agents, make no warranty, implied or otherwise, nor accept any liability, as to the accuracy or completeness of the information contained in these documents, drawings or electronic files. Do not remove or delete this note from document, drawing or electronic file.

PRELIMINARY FACILITY LOCATIONS - MAINLINE REV C2 ROUTE

ALASKA LNG



B-106



Legend

Mainline Pipeline	Permanent ROW	Existing Roads
Access Road - Gravel	Construction ROW	Off Road Trails
	ATWS	Section
	Disposal Site	Township
	Material Site Study Area (MSSA)	

ALASKA LNG PROJECT
Preliminary Facility Locations
Mainline Rev C2 Route

CENSUS AREA: YUKON-KOYUKUK	DRAWN BY: AGDC
STATE: ALASKA	CHECKED BY:
REV. NO.: A	ISSUED FOR REVIEW
REVISION	DATE
	2017-03-10
PRELIMINARY	
1:24,000	
0 10 20 Miles	
DATE: 2017-03-10	PROJECTION: NAD83 NSRS2007 ALASKAZONE4 FTUS 54392

DISCLAIMER

The information contained herein is for informational or planning purposes only. It does not nor should it be deemed to be an offer, request or proposals for rights or occupation of any kind. The Alaska LNG Project Participants and their respective officers, employees and agents, make no warranty, implied or otherwise, nor accept any liability, as to the accuracy or completeness of the information contained in these documents, drawings or electronic files. Do not remove or delete this note from document, drawing or electronic file.

DWG: RR1_APPENDIX_A1_MAINLINE_TOPO_REV_C2_CL SHEET: 99

Alaska LNG Project



B-107



Legend		EXISTING FEATURES	
Mainline Pipeline	Permanent ROW	Existing Roads	Borough / Census Area
Construction ROW	ATWS	Off Road Trails	Incorporated City Boundary
		Township	Section

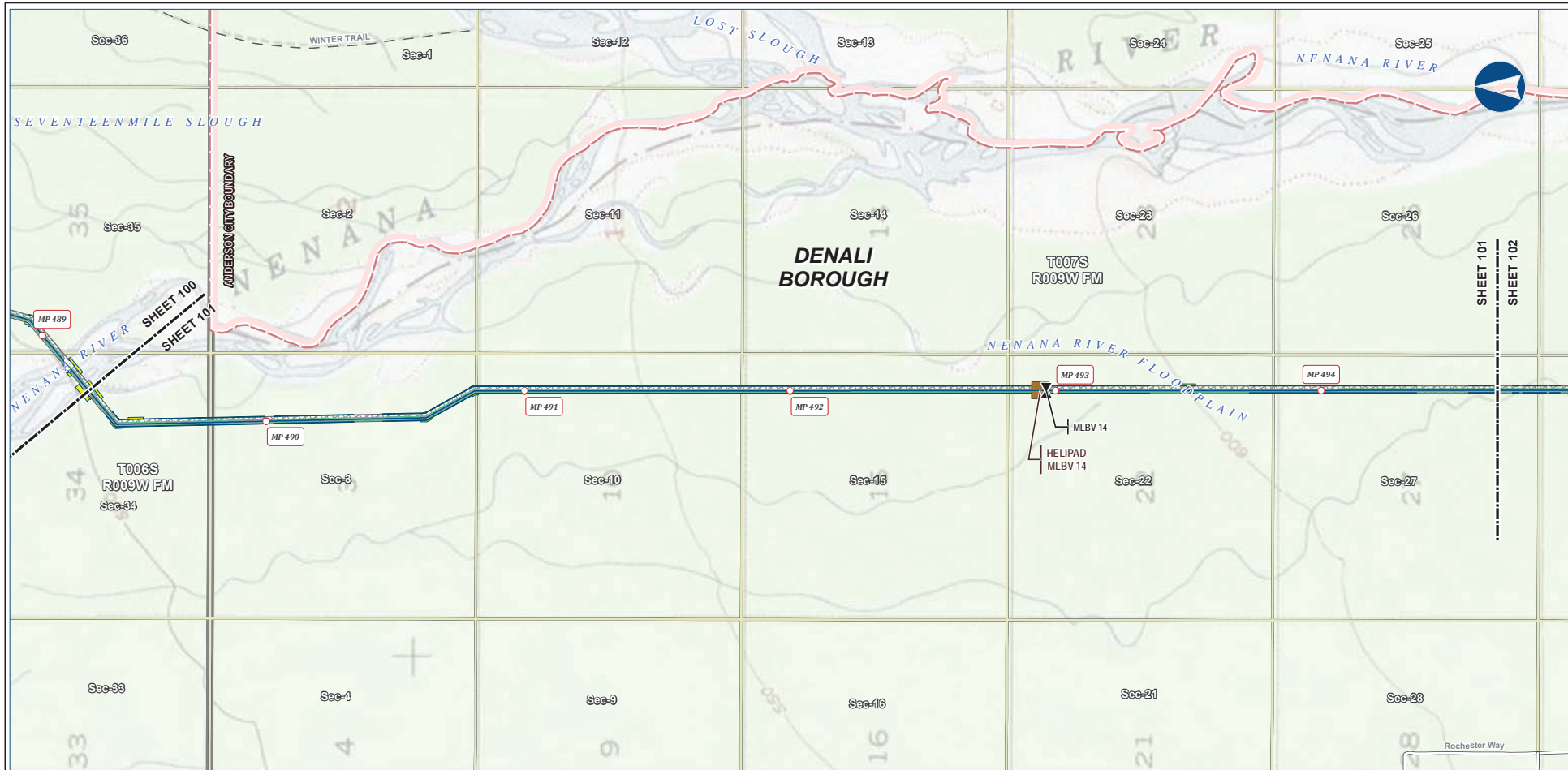
ALASKA LNG PROJECT Preliminary Facility Locations Mainline Rev C2 Route			
CENSUS AREA:	YUKON-KOYUKUK	DRAWN BY:	AGDC
STATE:	ALASKA	CHECKED BY:	
REV. NO.:	REVISION	DATE	
A	ISSUED FOR REVIEW	2017-03-10	
PRELIMINARY			
1:24,000			
DATE:	2017-03-10	PROJECTION:	NAD83 NRSR2007 ALASKAZONE4 FTUS S4392

DISCLAIMER

The information contained herein is for informational or planning purposes only. It does not nor should it be deemed to be an offer, request or proposals for rights or occupation of any kind. The Alaska LNG Project Participants and their respective officers, employees and agents, make no warranty, implied or otherwise, nor accept any liability, as to the accuracy or completeness of the information contained in these documents, drawings or electronic files. Do not remove or delete this note from document, drawing or electronic file.

PRELIMINARY FACILITY LOCATIONS - MAINLINE REV C2 ROUTE

ALASKA LNG



B-108



Legend	
Mainline Pipeline	Permanent ROW
Mainline Blockvalve	Construction ROW
Helipad	ATWS
Existing Roads	Off Road Trails
Incorporated City Boundary	Township
Section	

ALASKA LNG PROJECT Preliminary Facility Locations Mainline Rev C2 Route			
BOROUGH:	DENALI	DRAWN BY:	AGDC
STATE:	ALASKA	CHECKED BY:	
REV. NO.:	REVISION	DATE	
A	ISSUED FOR REVIEW	2017-03-10	
PRELIMINARY			
1:24,000			
DATE:	2017-03-10	PROJECTION:	NAD83 NSRS2007 ALASKAZONE4 FTUS 54392

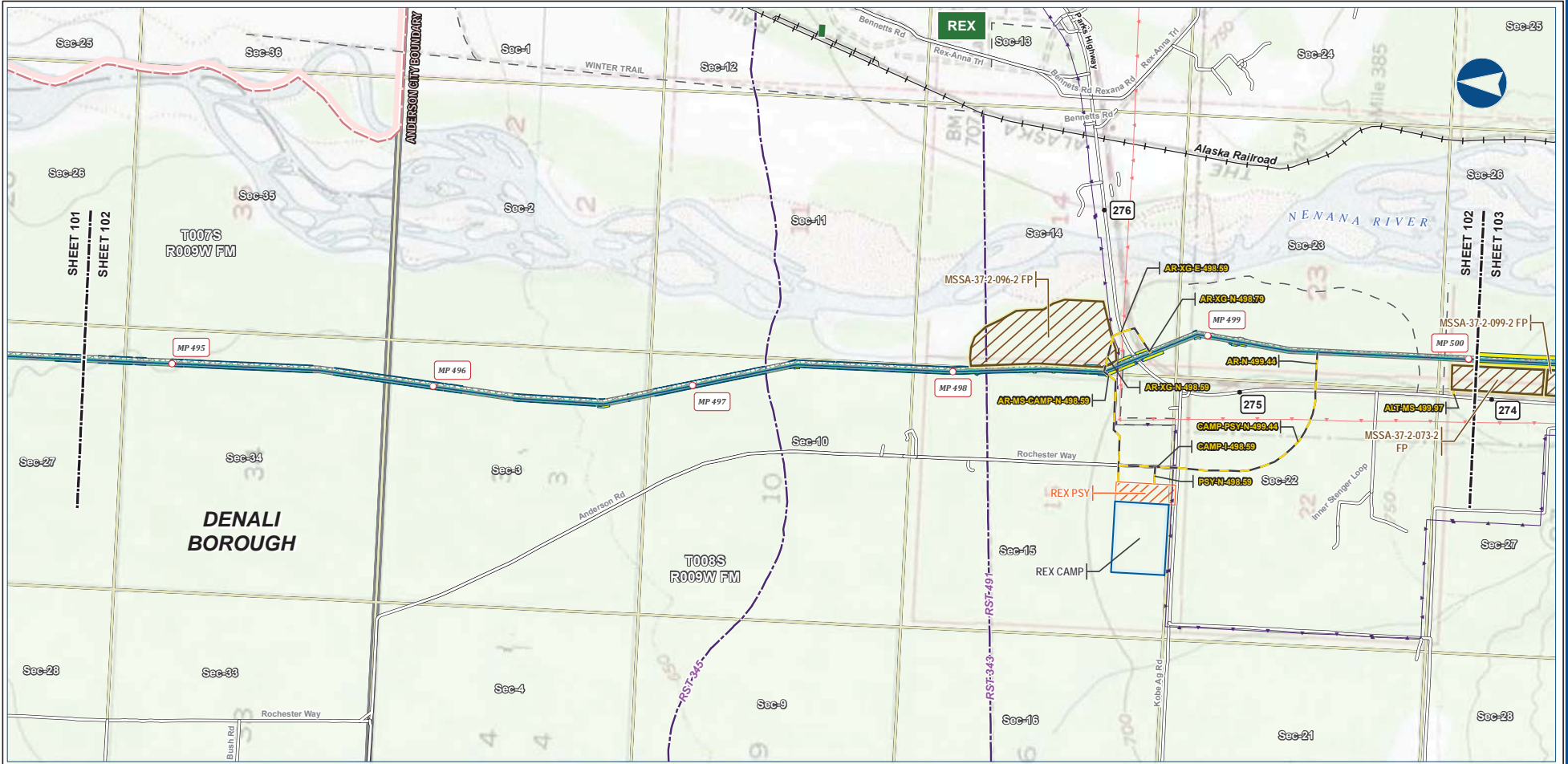
DISCLAIMER

The information contained herein is for informational or planning purposes only. It does not nor should it be deemed to be an offer, request or proposals for rights or occupation of any kind. The Alaska LNG Project Participants and their respective officers, employees and agents, make no warranty, implied or otherwise, nor accept any liability, as to the accuracy or completeness of the information contained in these documents, drawings or electronic files. Do not remove or delete this note from document, drawing or electronic file.

Alaska LNG Project

PRELIMINARY FACILITY LOCATIONS - MAINLINE REV C2 ROUTE

ALASKA LNG



B-109



Legend		EXISTING FEATURES	
Permanent ROW	Mainline Pipeline	Existing Roads	Railroad
Construction ROW	ATWS	Revised Statute 2477 Trail	Off Road Trails
Off ROW Camp	Pipe Storage Yard (PSY)	Buried Cable	Overhead Powerline
Material Site Study Area (MSSA)		Incorporated City Boundary	Alaska DOT Place Names
		Section	Township

ALASKA LNG PROJECT			
Preliminary Facility Locations			
Mainline Rev C2 Route			
BOROUGH:	DENALI	DRAWN BY:	AGDC
STATE:	ALASKA	CHECKED BY:	
REV. NO.:	REVISION	DATE	
A	ISSUED FOR REVIEW	2017-03-10	
PRELIMINARY			
1:24,000			
DATE:	2017-03-10	PROJECTION:	NAD83 NSRS2007 ALASKAZONE4 FTUS 54392

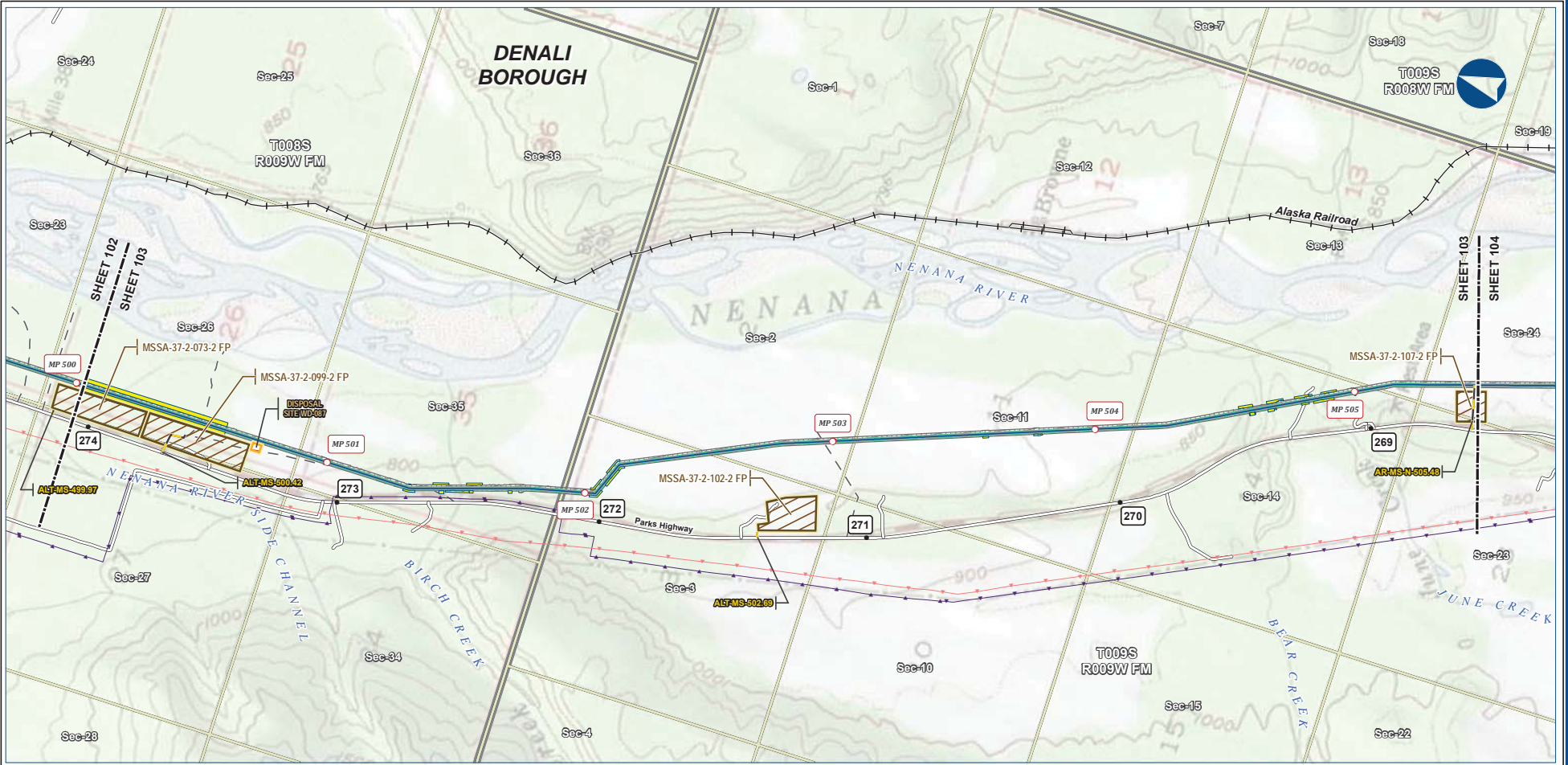
DISCLAIMER

The information contained herein is for informational or planning purposes only. It does not nor should it be deemed to be an offer, request or proposals for rights or occupation of any kind. The Alaska LNG Project Participants and their respective officers, employees and agents, make no warranty, implied or otherwise, nor accept any liability, as to the accuracy or completeness of the information contained in these documents, drawings or electronic files. Do not remove or delete this note from document, drawing or electronic file.

Alaska LNG Project

PRELIMINARY FACILITY LOCATIONS - MAINLINE REV C2 ROUTE

ALASKA LNG



B-110



Legend

Mainline Pipeline	Permanent ROW	Existing Roads
Access Road - Gravel	Construction ROW	Railroad
	ATWS	Off Road Trails
	Disposal Site	Buried Cable
	Material Site Study Area (MSSA)	Overhead Powerline
		Section
		Township

ALASKA LNG PROJECT
Preliminary Facility Locations
Mainline Rev C2 Route

BOROUGH:	DENALI	DRAWN BY:	AGDC
STATE:	ALASKA	CHECKED BY:	
REV. NO.:	REVISION	DATE	
A	ISSUED FOR REVIEW	2017-03-10	
PRELIMINARY			
1:24,000			
DATE:	2017-03-10	PROJECTION:	NAD83 NRSR2007 ALASKAZONE4 FTUS 54392

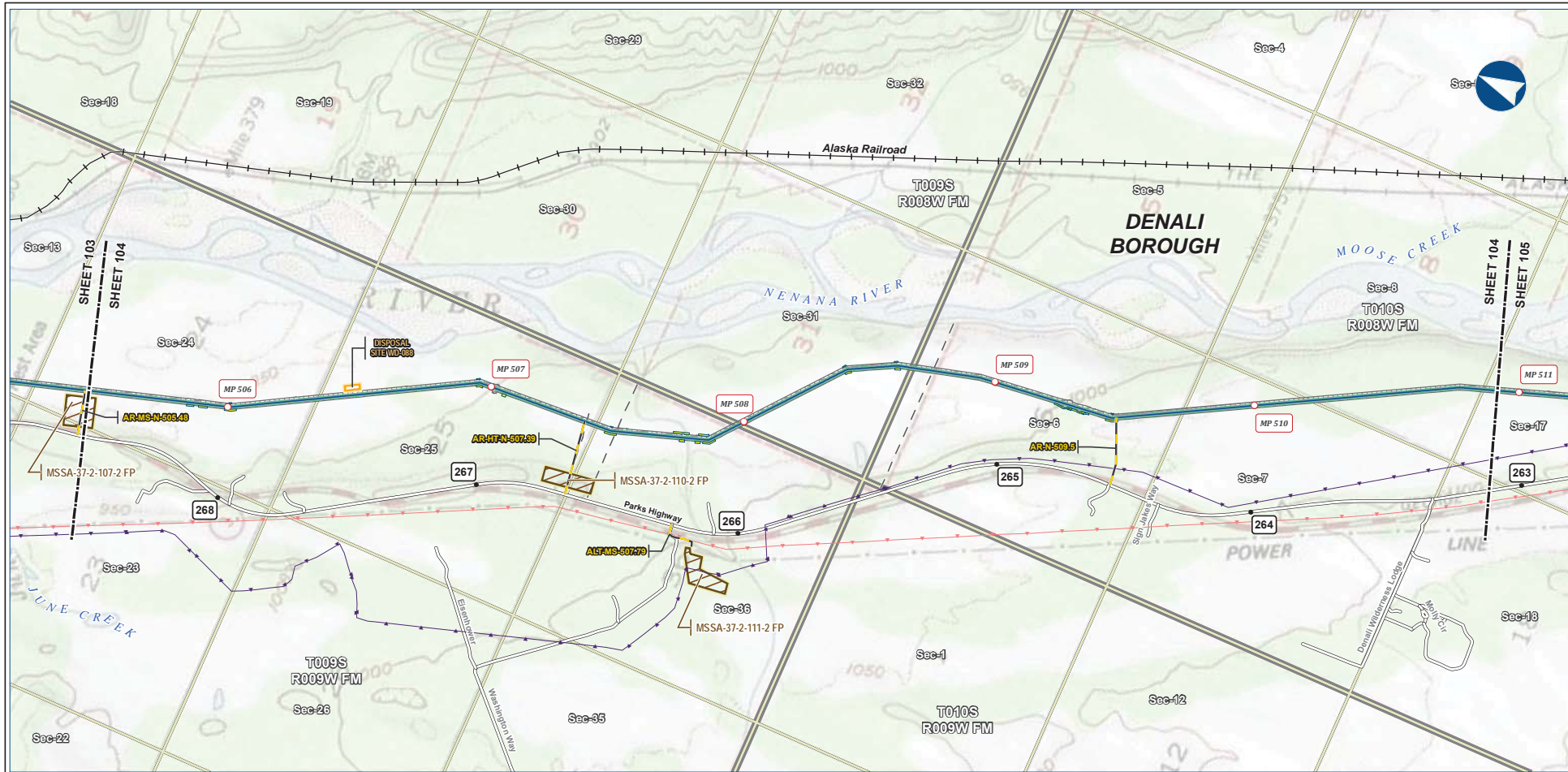
DISCLAIMER

The information contained herein is for informational or planning purposes only. It does not nor should it be deemed to be an offer, request or proposals for rights or occupation of any kind. The Alaska LNG Project Participants and their respective officers, employees and agents, make no warranty, implied or otherwise, nor accept any liability, as to the accuracy or completeness of the information contained in these documents, drawings or electronic files. Do not remove or delete this note from document, drawing or electronic file.

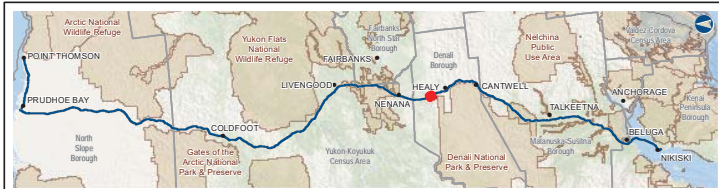
Alaska LNG Project

PRELIMINARY FACILITY LOCATIONS - MAINLINE REV C2 ROUTE

ALASKA LNG



B-111



Legend		EXISTING FEATURES	
	Mainline Pipeline		Existing Roads
	Construction ROW		Railroad
	Access Road - Gravel		Off Road Trails
	ATWS		Buried Cable
	Disposal Site		Overhead Powerline
	Material Site Study Area (MSSA)		Section
			Township

ALASKA LNG PROJECT			
Preliminary Facility Locations			
Mainline Rev C2 Route			
BOROUGH:	DENALI	DRAWN BY:	AGDC
STATE:	ALASKA	CHECKED BY:	
REV. NO.:	REVISION	DATE	
A	ISSUED FOR REVIEW	2017-03-10	
PRELIMINARY			
1:24,000			
DATE: 2017-03-10	PROJECTION: NAD83 NSRS2007 ALASKAZONE4 FTUS S4392	DWG: RR-1_APPENDIX_A1_MAINLINE_TOPO_REV_C2_CL	SHEET: 104

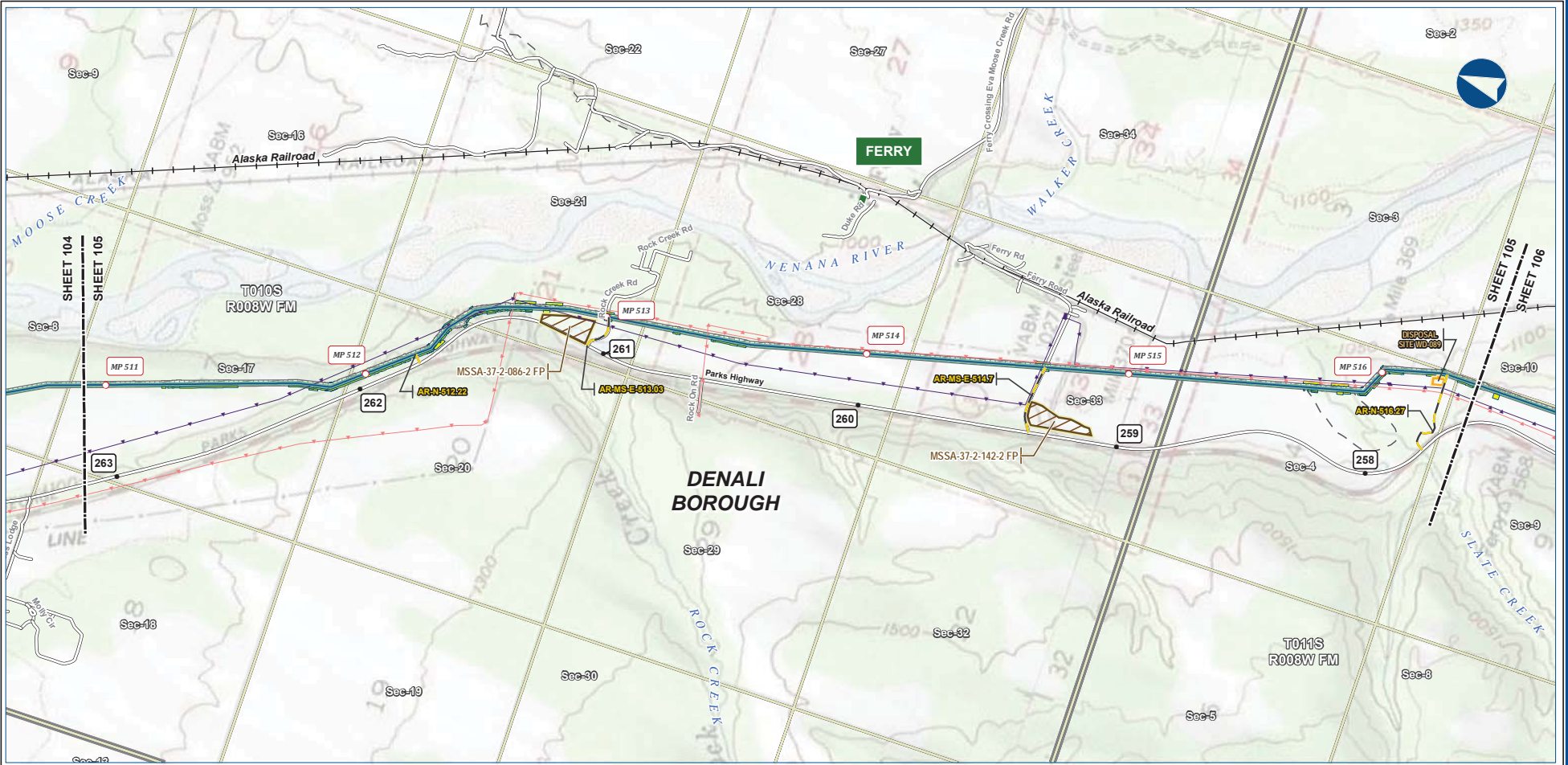
DISCLAIMER

The information contained herein is for informational or planning purposes only. It does not nor should it be deemed to be an offer, request or proposals for rights or occupation of any kind. The Alaska LNG Project Participants and their respective officers, employees and agents, make no warranty, implied or otherwise, nor accept any liability, as to the accuracy or completeness of the information contained in these documents, drawings or electronic files. Do not remove or delete this note from document, drawing or electronic file.

Alaska LNG Project

PRELIMINARY FACILITY LOCATIONS - MAINLINE REV C2 ROUTE

ALASKA LNG



B-112



Alaska LNG Project

Legend		EXISTING FEATURES	
	Mainline Pipeline		Existing Roads
	Construction ROW		Railroad
	Access Road - Gravel		Off Road Trails
	ATWS		Buried Cable
	Disposal Site		Overhead Powerline
	Material Site Study Area (MSSA)		Alaska DOT Place Names
			Section
			Township

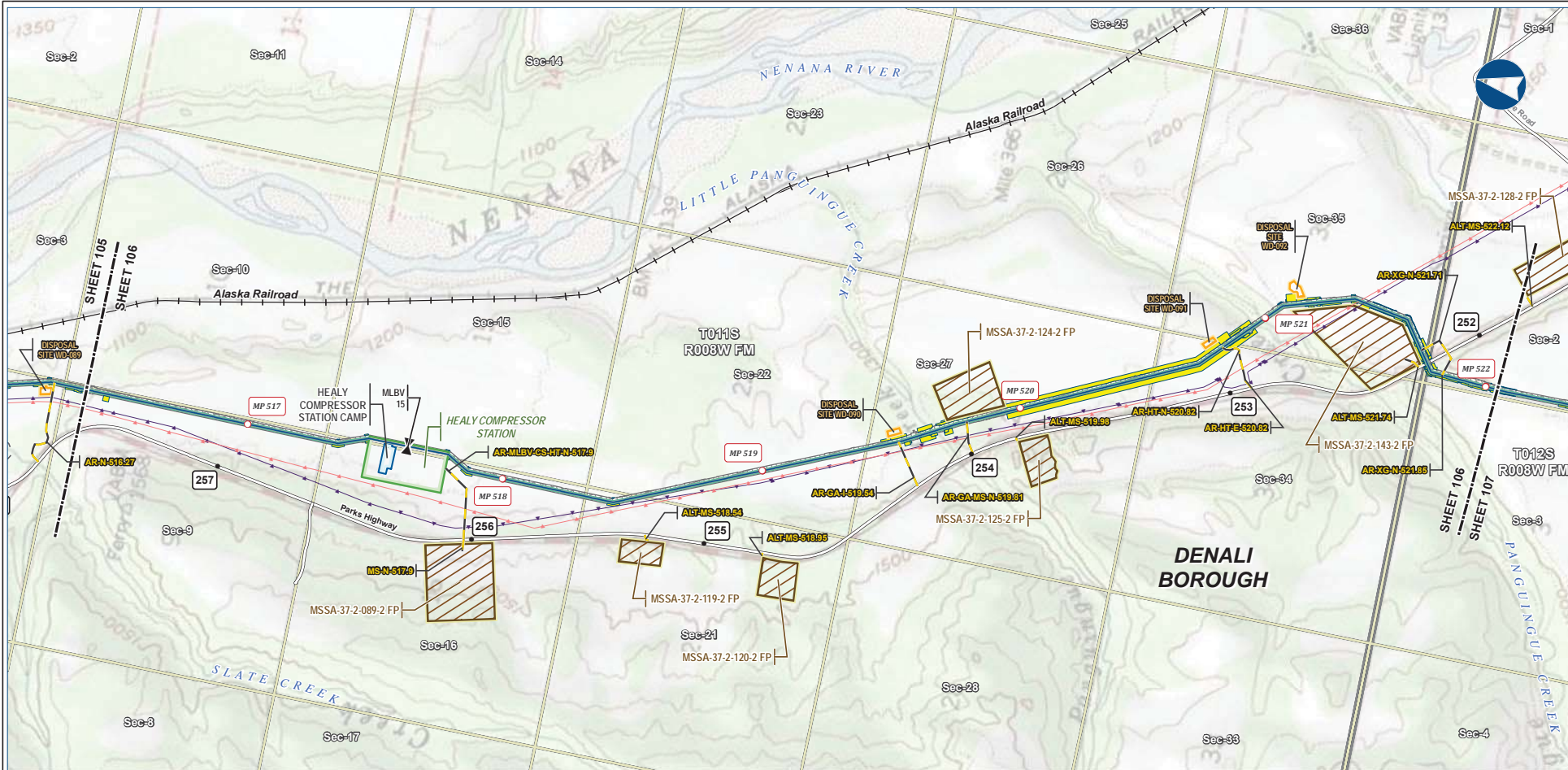
ALASKA LNG PROJECT Preliminary Facility Locations Mainline Rev C2 Route			
BOROUGH:	DENALI	DRAWN BY:	AGDC
STATE:	ALASKA	CHECKED BY:	
REV. NO.:	REVISION	DATE	
A	ISSUED FOR REVIEW	2017-03-10	
PRELIMINARY			
1:24,000			
DATE: 2017-03-10	PROJECTION: NAD83 NSRS2007 ALASKAZONE4 FTUS 54392	DWG: RR_1_APPENDIX_A1_MAINLINE_TOPO_REV_C2_CL	SHEET: 105

DISCLAIMER

The information contained herein is for informational or planning purposes only. It does not nor should it be deemed to be an offer, request or proposals for rights or occupation of any kind. The Alaska LNG Project Participants and their respective officers, employees and agents, make no warranty, implied or otherwise, nor accept any liability, as to the accuracy or completeness of the information contained in these documents, drawings or electronic files. Do not remove or delete this note from document, drawing or electronic file.

PRELIMINARY FACILITY LOCATIONS - MAINLINE REV C2 ROUTE

ALASKA LNG



B-113



Legend		EXISTING FEATURES	
Mainline Pipeline	Permanent ROW	Existing Roads	Railroad
Access Road - Gravel	Construction ROW	Off Road Trails	Buried Cable
Mainline Blockvale	ATWS	Overhead Powerline	Section
	Compressor Station	Camp	Township
	Disposal Site	Material Site Study Area (MSSA)	

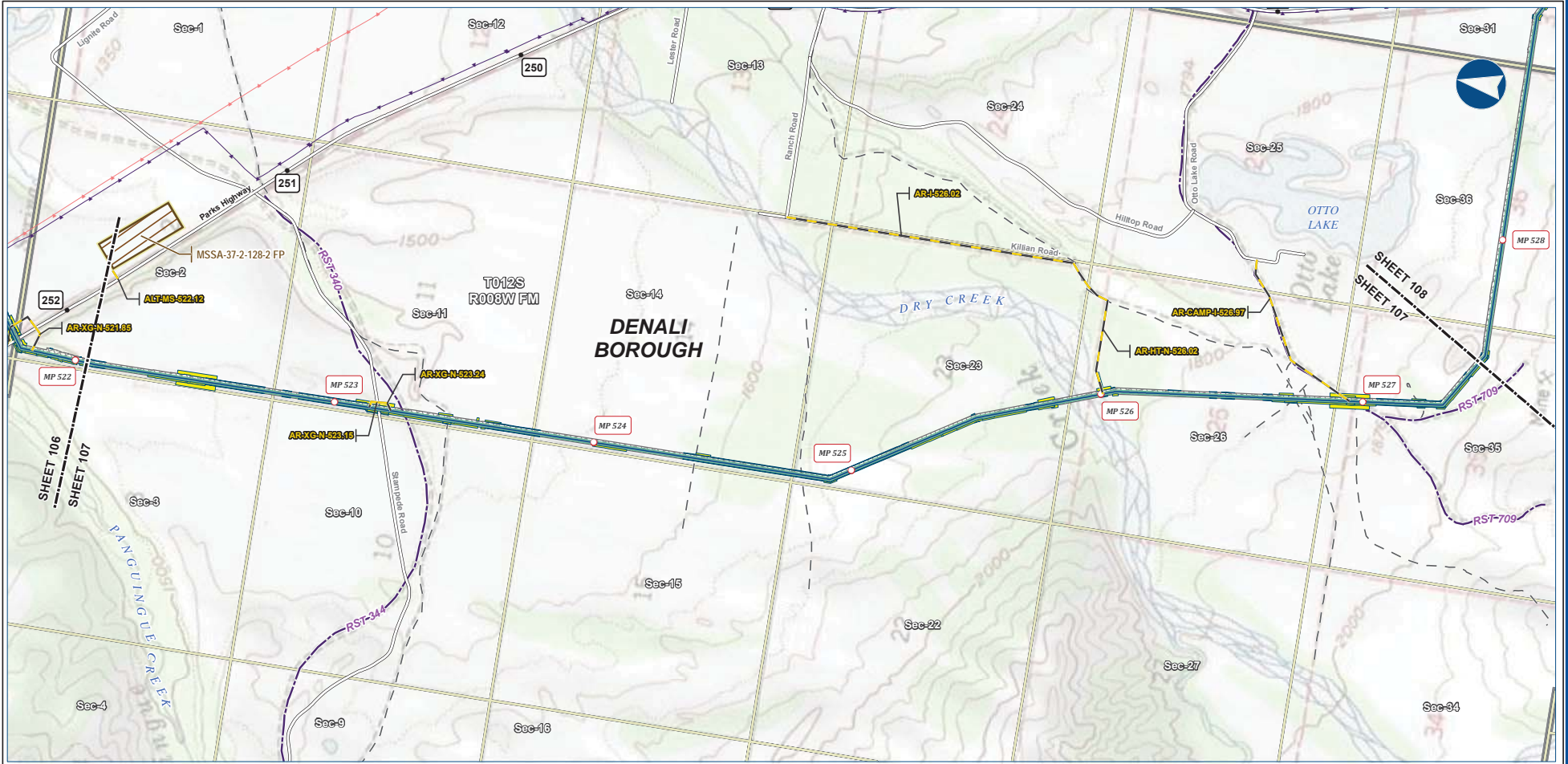
ALASKA LNG PROJECT			
Preliminary Facility Locations			
Mainline Rev C2 Route			
BOROUGH:	DENALI	DRAWN BY:	AGDC
STATE:	ALASKA	CHECKED BY:	
REV. NO.:	REVISION	DATE	
A	ISSUED FOR REVIEW	2017-03-10	
PRELIMINARY			
1:24,000			
DATE: 2017-03-10	PROJECTION: NAD83 NSRS2007 ALASKAZONE4 FTUS 54392	DWG: RR-1_APPENDIX_A1_MAINLINE_TOPO_REV_C2_CL	SHEET: 106

DISCLAIMER

The information contained herein is for informational or planning purposes only. It does not nor should it be deemed to be an offer, request or proposals for rights or occupation of any kind. The Alaska LNG Project Participants and their respective officers, employees and agents, make no warranty, implied or otherwise, nor accept any liability, as to the accuracy or completeness of the information contained in these documents, drawings or electronic files. Do not remove or delete this note from document, drawing or electronic file.

Alaska LNG Project

PRELIMINARY FACILITY LOCATIONS - MAINLINE REV C2 ROUTE



B-114



Legend		EXISTING FEATURES	
Mainline Pipeline	Permanent ROW	Existing Roads	Revised Statute 2477 Trail
Access Road - Gravel	Construction ROW	Off Road Trails	Buried Cable
ATWS	Material Site Study Area (MSSA)	Overhead Powerline	Section
		Township	

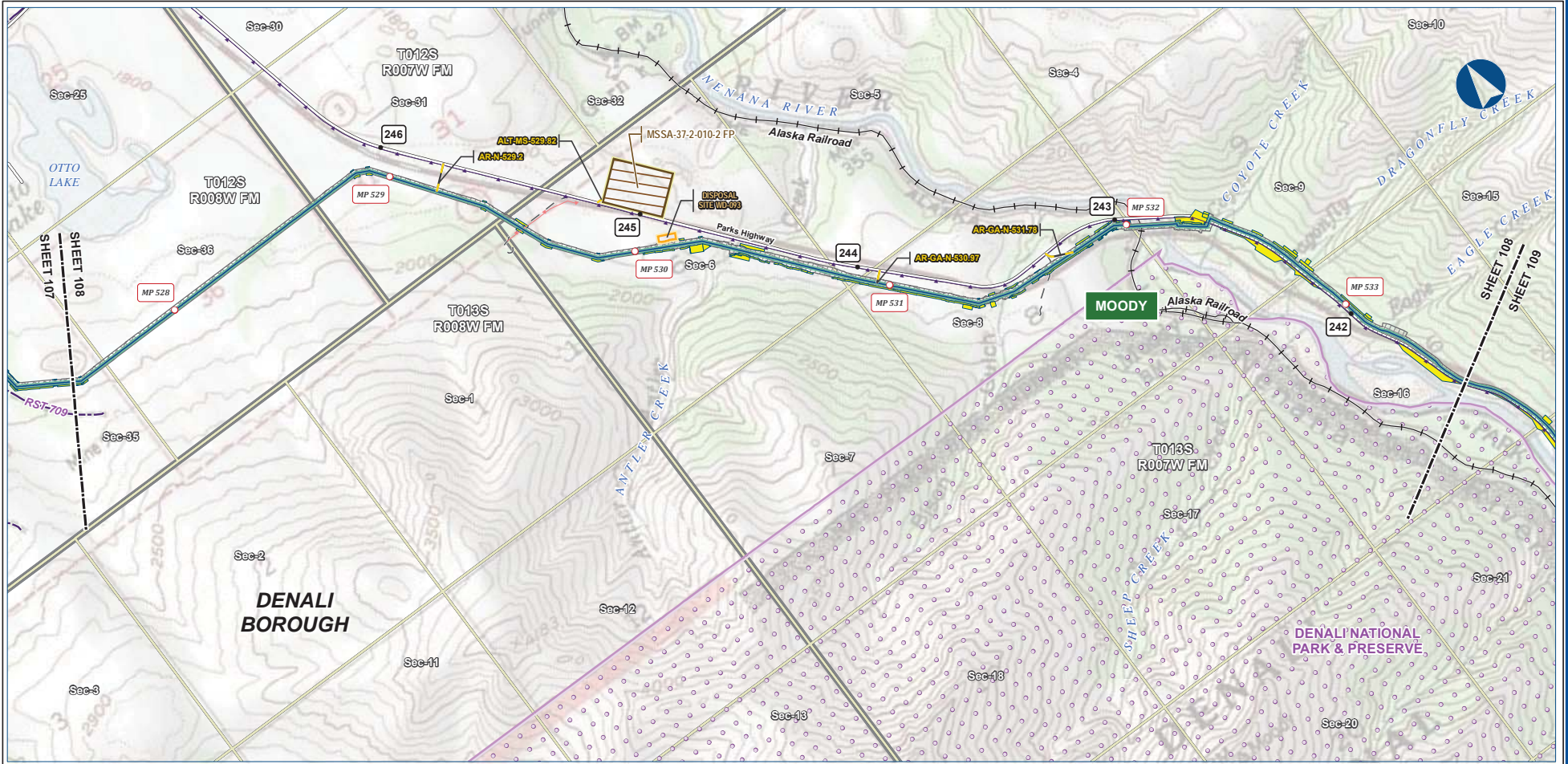
ALASKA LNG PROJECT Preliminary Facility Locations Mainline Rev C2 Route			
BOROUGH:	DENALI	DRAWN BY:	AGDC
STATE:	ALASKA	CHECKED BY:	
REV. NO.:	REVISION	DATE	
A	ISSUED FOR REVIEW	2017-03-10	
PRELIMINARY			
1:24,000			
DATE:	2017-03-10	PROJECTION:	NAD83 NRSR2007 ALASKAZONE4 FTUS 54392

DISCLAIMER

The information contained herein is for informational or planning purposes only. It does not nor should it be deemed to be an offer, request or proposals for rights or occupation of any kind. The Alaska LNG Project Participants and their respective officers, employees and agents, make no warranty, implied or otherwise, nor accept any liability, as to the accuracy or completeness of the information contained in these documents, drawings or electronic files. Do not remove or delete this note from document, drawing or electronic file.

PRELIMINARY FACILITY LOCATIONS - MAINLINE REV C2 ROUTE

ALASKA LNG



B-115



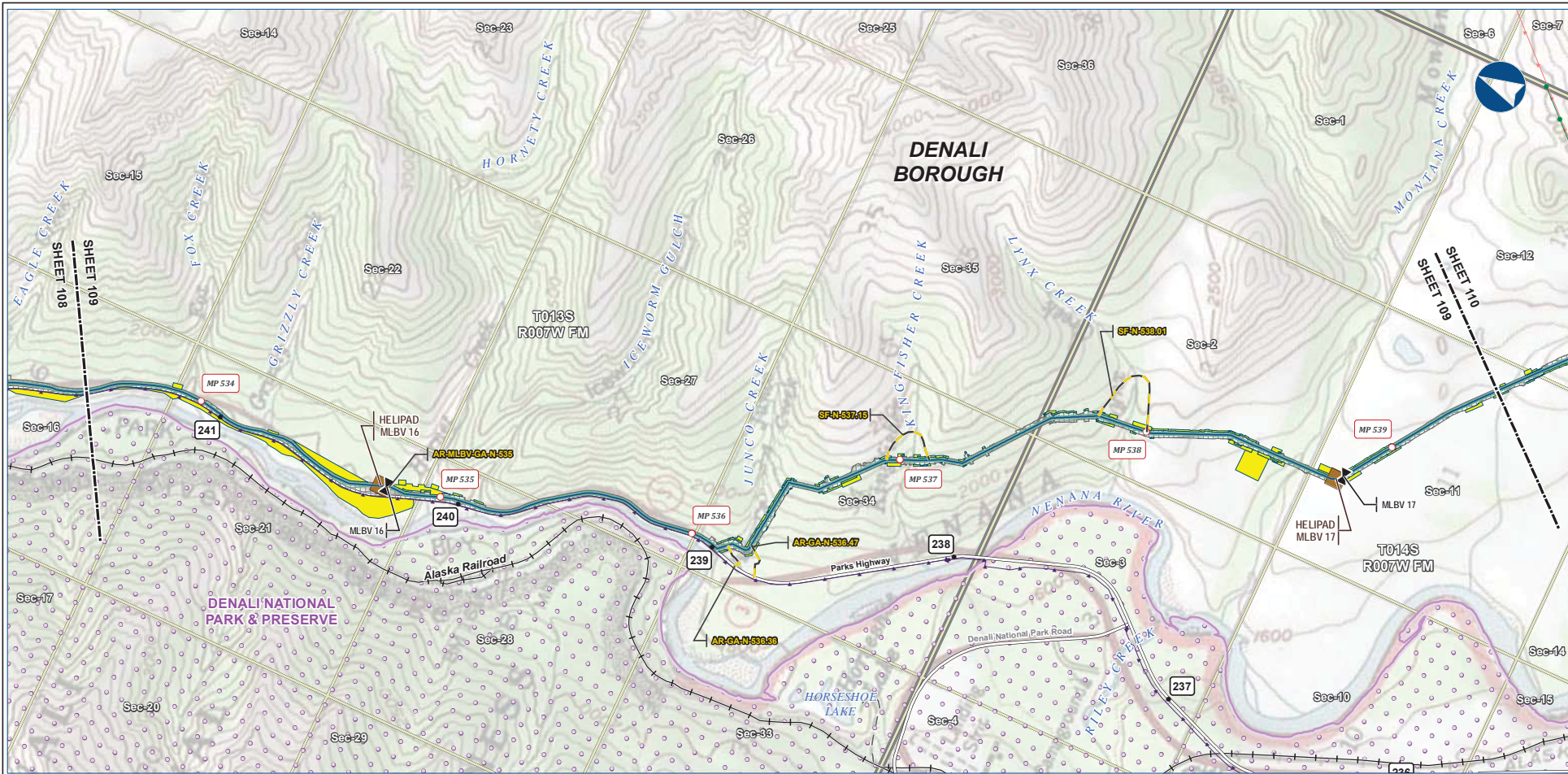
Legend		EXISTING FEATURES	
	Mainline Pipeline		Existing Road
	Construction ROW		Railroad
	Access Road - Gravel		Revised Statute 2477 Trail
	Permanent ROW		Off Road Trails
	ATWS		Buried Cable
	Disposal Site		Overhead Powerline
	Material Site Study Area (MSSA)		Conservation Lands
			Alaska DOT Place Names
			Section
			Township

ALASKA LNG PROJECT			
Preliminary Facility Locations			
Mainline Rev C2 Route			
BOROUGH:	DENALI	DRAWN BY:	AGDC
STATE:	ALASKA	CHECKED BY:	
REV. NO.:	REVISION	DATE	
A	ISSUED FOR REVIEW	2017-03-10	
PRELIMINARY			
1:24,000			
DATE:	2017-03-10	PRODUCTION:	MAD83 NSRS2007 ALASKAZONE4 FTUS 54392

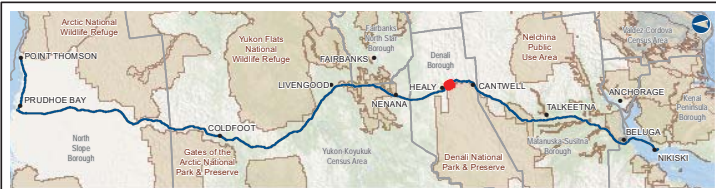
DISCLAIMER

The information contained herein is for informational or planning purposes only. It does not nor should it be deemed to be an offer, request or proposals for rights or occupation of any kind. The Alaska LNG Project Participants and their respective officers, employees and agents, make no warranty, implied or otherwise, nor accept any liability, as to the accuracy or completeness of the information contained in these documents, drawings or electronic files. Do not remove or delete this note from document, drawing or electronic file.

Alaska LNG Project



B-116



Legend		EXISTING FEATURES	
Mainline Pipeline	Permanent ROW	Existing Roads	Railroad
Access Road - Gravel	Construction ROW	Off Road Trails	Existing Pipeline
Mainline Blockvalve	ATWS	Buried Cable	Overhead Powerline
Helipad		Conservation Lands	Section
		Township	

ALASKA LNG PROJECT			
Preliminary Facility Locations			
Mainline Rev C2 Route			
BOROUGH:	DENALI	DRAWN BY:	AGDC
STATE:	ALASKA	CHECKED BY:	
REV. NO.:	REVISION	DATE	
A	ISSUED FOR REVIEW	2017-03-10	
PRELIMINARY			
1:24,000			
DATE:	2017-03-10	PROJECTION:	NAD83 NSRS2007 ALASKAZONE4 FTUS 54392

DISCLAIMER

The information contained herein is for informational or planning purposes only. It does not nor should it be deemed to be an offer, request or proposals for rights or occupation of any kind. The Alaska LNG Project Participants and their respective officers, employees and agents, make no warranty, implied or otherwise, nor accept any liability, as to the accuracy or completeness of the information contained in these documents, drawings or electronic files. Do not remove or delete this note from document, drawing or electronic file.

Mainline Facilities
(cont'd in appendix B volumes 3 and 4)