

Appendix K - Part 3

Leidy South Project Compressor Station 607 and 620 Visual Simulations



Viewpoint 10 - Bridge Road (Looking East) - **Existing View (Pre-Construction)**
Artist Impression Subject to Change



Station 620 Photo Simulations

Viewpoint 10
Bridge Road

Looking East
Existing View (Pre-Construction)

● Viewpoint Location



NOTES:
This image is a representative view only.

Provided by
Truescape[®]
truescape.com

Latitude: 40.675567
Longitude: -76.476178
Elevation of Viewpoint Position: 257.8
Height of Camera Above Ground (ft): 5.4
Date of Photography: 19 November 2019 at 11:34 AM
Orientation of View: E



Viewpoint 10 - Bridge Road (Looking East) - **Simulated Proposed Post-Construction View**

Artist Impression Subject to Change



Station 620 Photo Simulations

Viewpoint 10
Bridge Road

Looking East
Simulated Proposed
Post-Construction View

● Viewpoint Location



NOTES:
This image is a representative view only.

Provided by
Truescape[®]
truescape.com

Latitude: 40.675567
Longitude: -76.476178
Elevation of Viewpoint Position: 257.8
Height of Camera Above Ground (ft): 5.4
Date of Photography: 19 November 2019 at 11:34 AM
Orientation of View: E



Viewpoint 10 - Bridge Road (Looking East) - **Simulated Proposed Post-Construction View** - Visual Screening including Vegetation - 4-9 feet
Artist Impression Subject to Change



Station 620 Photo Simulations

Viewpoint 10
Bridge Road

Looking East
Simulated Proposed Post-Construction View - Visual Screening including Vegetation - 4-9 feet

● Viewpoint Location



NOTES:
This image is a representative view only.

Provided by

Truescape®

truescape.com

Latitude: 40.675567
Longitude: -76.476178
Elevation of Viewpoint Position: 257.8
Height of Camera Above Ground (ft): 5.4
Date of Photography: 19 November 2019 at 11:34 AM
Orientation of View: E

ARTISTIC IMPRESSION SUBJECT TO CHANGE:

The visual simulation depicts approximate location of proposed vegetative screening. During construction, Transco will consider local availability and transplant success rates when selecting the evergreen tree species for visual screening.



Viewpoint 10 - Bridge Road (Looking East) - **Simulated Proposed Post-Construction View** - Visual Screening including Vegetation - 14-17 feet
Artist Impression Subject to Change



Station 620 Photo Simulations

Viewpoint 10
Bridge Road

Looking East
Simulated Proposed Post-Construction View - Visual Screening including Vegetation - 14-17 feet

Viewpoint Location



NOTES:
This image is a representative view only.

Provided by

Truescape

truescape.com

Latitude: 40.675567
Longitude: -76.476178
Elevation of Viewpoint Position: 257.8
Height of Camera Above Ground (ft): 5.4
Date of Photography: 19 November 2019 at 11:34 AM
Orientation of View: E

ARTISTIC IMPRESSION SUBJECT TO CHANGE:

The visual simulation depicts approximate location of proposed vegetative screening. During construction, Transco will consider local availability and transplant success rates when selecting the evergreen tree species for visual screening.

The visual simulation depicts trees ranging in height from 14 to 17 feet. Based on the anticipated growth rates, this tree height would be achieved in approximately 10 years.



Viewpoint 10 - Bridge Road (Looking East) - **Existing View (Pre-Construction)** - Night
Artist Impression Subject to Change



Station 620 Photo Simulations

Viewpoint 10
Bridge Road

Looking East
Existing View - Night
(Pre-Construction)

● Viewpoint Location



NOTES:
This image is a representative view only.

Provided by

Truescape[®]

truescape.com

Latitude: 40.675567
Longitude: -76.476178
Elevation of Viewpoint Position: 257.8
Height of Camera Above Ground (m): 5.4
Date of Photography: 19 November 2019 at 11:34 AM
Orientation of View: E



Viewpoint 10 - Bridge Road (Looking East) - **Simulated Proposed Post-Construction View** - Night

Artist Impression Subject to Change



Station 620 Photo Simulations

Viewpoint 10
Bridge Road

Looking East
Simulated Proposed
Post-Construction View - Night

Viewpoint Location



NOTES:
This image is a representative view only.

Provided by
Truescape
truescape.com

Latitude: 40.675567
Longitude: -76.476178
Elevation of Viewpoint Position: 257.8
Height of Camera Above Ground (ft): 5.4
Date of Photography: 19 November 2019 at 11:34 AM
Orientation of View: E



Viewpoint 10 - Bridge Road (Looking East) - **Simulated Proposed Post-Construction View** - Visual Screening including Vegetation - 4-9 feet - Night
Artist Impression Subject to Change



Station 620 Photo Simulations

Viewpoint 10
Bridge Road

Looking East
Simulated Proposed Post-Construction View - Visual Screening including Vegetation - 4-9 feet - Night

● Viewpoint Location



NOTES:
This image is a representative view only.

Provided by

Truescape[®]

truescape.com

Latitude: **40.675567**
Longitude: **-76.476178**
Elevation of Viewpoint Position: **257.8**
Height of Camera Above Ground (ft): **5.4**
Date of Photography: **19 November 2019 at 11:34 AM**
Orientation of View: **E**

ARTISTIC IMPRESSION SUBJECT TO CHANGE:

The visual simulation depicts approximate location of proposed vegetative screening. During construction, Transco will consider local availability and transplant success rates when selecting the evergreen tree species for visual screening.



Viewpoint 10 - Bridge Road (Looking East) - **Simulated Proposed Post-Construction View** - Visual Screening including Vegetation - 14-17 feet - Night
Artist Impression Subject to Change



Station 620 Photo Simulations

Viewpoint 10
Bridge Road

Looking East
Simulated Proposed Post-Construction View - Visual Screening including Vegetation - 14-17 feet - Night

● Viewpoint Location



NOTES:
This image is a representative view only.

Provided by

Truescape[®]

truescape.com

Latitude: **40.675567**
Longitude: **-76.476178**
Elevation of Viewpoint Position: **257.8**
Height of Camera Above Ground (ft): **5.4**
Date of Photography: **19 November 2019 at 11:34 AM**
Orientation of View: **E**

ARTISTIC IMPRESSION SUBJECT TO CHANGE:

The visual simulation depicts approximate location of proposed vegetative screening. During construction, Transco will consider local availability and transplant success rates when selecting the evergreen tree species for visual screening.

The visual simulation depicts trees ranging in height from 14 to 17 feet. Based on the anticipated growth rates, this tree height would be achieved in approximately 10 years.



Viewpoint 01 - Maransky Road, Looking South East - Existing View (Pre-Construction)

Artist Impression Subject to Change



Station 607 Photo Simulations

Viewpoint 01
Maransky Road

Looking South East
Existing View (Pre-Construction)

Viewpoint Location



NOTES:
This image is a representative view only.

Provided by
Truescape[®]
truescape.com

Easting Position (NZMG):	397397.55
Northing Position (NZMG):	4572692.02
Elevation of Viewpoint Position:	1291.5
Height of Camera Above Ground (m):	5.4
Date of Photography:	4 October 2019 at 03:07 PM
Orientation of View:	SE



Viewpoint 01 - Maransky Road, Looking South East - **Simulated Post-Construction View** - Visual Screening - 4-9 feet
Artist Impression Subject to Change



Station 607 Photo Simulations

Viewpoint 01
Maransky Road

Looking South East
Simulated Post-Construction View
- Visual Screening - 4-9 feet

● Viewpoint Location



NOTES:
This image is a representative view only.

Provided by

Truescape[®]

truescape.com

Easting Position (NZMG):	397397.55
Northing Position (NZMG):	4572692.02
Elevation of Viewpoint Position:	1291.5
Height of Camera Above G round (m):	5.4
Date of Photography:	4 October 2019 at 03:07 PM
Orientation of View:	SE

ARTISTIC IMPRESSION SUBJECT TO CHANGE:

The visual simulation depicts approximate location of proposed vegetative screening. During construction, Transco will consider local availability and transplant success rates when selecting the evergreen tree species for visual screening.



Viewpoint 01 - Maransky Road, Looking South East - **Simulated Post-Construction View** - Visual Screening - 14-17 feet
Artist Impression Subject to Change



Station 607 Photo Simulations

Viewpoint 01
Maransky Road

Looking South East
Simulated Post-Construction View
- Visual Screening - 14-17 feet

Viewpoint Location



NOTES:
This image is a representative view only.

Provided by

Truescape

truescape.com

Easting Position (NZMG):	397397.55
Northing Position (NZMG):	4572692.02
Elevation of Viewpoint Position:	1291.5
Height of Camera Above Ground (m):	5.4
Date of Photography:	4 October 2019 at 03:07 PM
Orientation of View:	SE

ARTISTIC IMPRESSION SUBJECT TO CHANGE:

The visual simulation depicts approximate location of proposed vegetative screening. During construction, Transco will consider local availability and transplant success rates when selecting the evergreen tree species for visual screening.

The visual simulation depicts trees ranging in height from 14 to 17 feet. Based on the anticipated growth rates, this tree height would be achieved in approximately 10 years.



Viewpoint 01 - Maransky Road, Looking South East - **Existing View (Pre-Construction)** - Night
Artist Impression Subject to Change



Station 607 Photo Simulations

Viewpoint 01
Maransky Road

Looking South East
Existing View - Night
(Pre-Construction)

● Viewpoint Location



NOTES:
This image is a representative view only.

Provided by

Truescape[®]

truescape.com

Easting Position (NZMG):	397397.55
Northing Position (NZMG):	4572692.02
Elevation of Viewpoint Position:	1291.5
Height of Camera Above Ground (m):	5.4
Date of Photography:	4 October 2019 at 03:07 PM
Orientation of View:	SE



Viewpoint 01 - Maransky Road, Looking South East - **Simulated Post-Construction View** - Visual Screening - 4-9 feet - Night

Artist Impression Subject to Change



Station 607 Photo Simulations

Viewpoint 01
Maransky Road

Looking South East
Simulated Post-Construction View
- Visual Screening - 4-9 feet - Night

● Viewpoint Location



NOTES:
This image is a representative view only.

Provided by

Truescape[®]

truescape.com

Easting Position (NZMG):	397397.55
Northing Position (NZMG):	4572692.02
Elevation of Viewpoint Position:	1291.5
Height of Camera Above Ground (m):	5.4
Date of Photography:	4 October 2019 at 03:07 PM
Orientation of View:	SE

ARTISTIC IMPRESSION SUBJECT TO CHANGE:

The visual simulation depicts approximate location of proposed vegetative screening. During construction, Transco will consider local availability and transplant success rates when selecting the evergreen tree species for visual screening.



Viewpoint 01 - Maransky Road, Looking South East - **Simulated Post-Construction View** - Visual Screening - 14-17 feet - Night
Artist Impression Subject to Change



Station 607 Photo Simulations

Viewpoint 01
Maransky Road

Looking South East
Simulated Post-Construction View
- Visual Screening - 14-17 feet - Night

● Viewpoint Location



NOTES:
This image is a representative view only.

Provided by

Truescape[®]

truescape.com

Easting Position (NZMG):	397397.55
Northing Position (NZMG):	4572692.02
Elevation of Viewpoint Position:	1291.5
Height of Camera Above Ground (m):	5.4
Date of Photography:	4 October 2019 at 03:07 PM
Orientation of View:	SE

ARTISTIC IMPRESSION SUBJECT TO CHANGE:

The visual simulation depicts approximate location of proposed vegetative screening. During construction, Transco will consider local availability and transplant success rates when selecting the evergreen tree species for visual screening.

The visual simulation depicts trees ranging in height from 14 to 17 feet. Based on the anticipated growth rates, this tree height would be achieved in approximately 10 years.



Viewpoint 02 - Bridge Out Road, Looking East - **Existing View (Pre-Construction)**
Artist Impression Subject to Change



Station 607 Photo Simulations

Viewpoint 02
Bridge Out Road

Looking East
Existing View (Pre-Construction)

● Viewpoint Location



NOTES:
This image is a representative view only.

Provided by
Truescape[®]
truescape.com

Easting Position (NZMG):	397369.25
Northing Position (NZMG):	4572716.29
Elevation of Viewpoint Position:	1324.3
Height of Camera Above Ground (m):	5.4
Date of Photography:	4 October 2019 at 02:39 PM
Orientation of View:	E



Viewpoint 02 - Bridge Out Road, Looking East - **Simulated Post-Construction View** - Visual Screening - 4-9 feet
Artist Impression Subject to Change



Station 607 Photo Simulations

Viewpoint 02
Bridge Out Road

Looking East
Simulated Post-Construction View
- Visual Screening - 4-9 feet

● Viewpoint Location



NOTES:
This image is a representative view only.

Provided by

Truescape[®]

truescape.com

Easting Position (NZMG):	397369.25
Northing Position (NZMG):	4572716.29
Elevation of Viewpoint Position:	1324.3
Height of Camera Above G round (m):	5.4
Date of Photography:	4 October 2019 at 02:39 PM
Orientation of View:	E

ARTISTIC IMPRESSION SUBJECT TO CHANGE:

The visual simulation depicts approximate location of proposed vegetative screening. During construction, Transco will consider local availability and transplant success rates when selecting the evergreen tree species for visual screening.



Viewpoint 02 - Bridge Out Road, Looking East - **Simulated Post-Construction View** - Visual Screening - 14-17 feet
Artist Impression Subject to Change



Station 607 Photo Simulations

Viewpoint 02
Bridge Out Road

Looking East
Simulated Post-Construction View
- Visual Screening - 14-17 feet

● Viewpoint Location



NOTES:
This image is a representative view only.

Provided by

Truescape[®]

truescape.com

Easting Position (NZMG):	397369.25
Northing Position (NZMG):	4572716.29
Elevation of Viewpoint Position:	1324.3
Height of Camera Above Ground (m):	5.4
Date of Photography:	4 October 2019 at 02:39 PM
Orientation of View:	E

ARTISTIC IMPRESSION SUBJECT TO CHANGE:

The visual simulation depicts approximate location of proposed vegetative screening. During construction, Transco will consider local availability and transplant success rates when selecting the evergreen tree species for visual screening.

The visual simulation depicts trees ranging in height from 14 to 17 feet. Based on the anticipated growth rates, this tree height would be achieved in approximately 10 years.



Viewpoint 02 - Bridge Out Road, Looking East - **Existing View (Pre-Construction)** - Night
Artist Impression Subject to Change



Station 607 Photo Simulations

Viewpoint 02
Bridge Out Road

Looking East
Existing View - Night
(Pre-Construction)

Viewpoint Location



NOTES:
This image is a representative view only.

Provided by

Truescape

truescape.com

Easting Position (NZMG):	397369.25
Northing Position (NZMG):	4572716.29
Elevation of Viewpoint Position:	1324.3
Height of Camera Above Ground (m):	5.4
Date of Photography:	4 October 2019 at 02:39 PM
Orientation of View:	E



Viewpoint 02 - Bridge Out Road, Looking East - **Simulated Post-Construction View** - Visual Screening - 4-9 feet - Night
Artist Impression Subject to Change



Station 607 Photo Simulations

Viewpoint 02
Bridge Out Road

Looking East
Simulated Post-Construction View
- Visual Screening - 4-9 feet - Night

● Viewpoint Location



NOTES:
This image is a representative view only.

Provided by

Truescape[®]

truescape.com

Easting Position (NZMG):	397369.25
Northing Position (NZMG):	4572716.29
Elevation of Viewpoint Position:	1324.3
Height of Camera Above G round (m):	5.4
Date of Photography:	4 October 2019 at 02:39 PM
Orientation of View:	E

ARTISTIC IMPRESSION SUBJECT TO CHANGE:

The visual simulation depicts approximate location of proposed vegetative screening. During construction, Transco will consider local availability and transplant success rates when selecting the evergreen tree species for visual screening.



Viewpoint 02 - Bridge Out Road, Looking East - **Simulated Post-Construction View** - Visual Screening - 14-17 feet - Night
Artist Impression Subject to Change



Station 607 Photo Simulations

Viewpoint 02
Bridge Out Road

Looking East
Simulated Post-Construction View
- Visual Screening - 14-17 feet - Night

● Viewpoint Location



NOTES:
This image is a representative view only.

Provided by

Truescape[®]

truescape.com

Easting Position (NZMG):	397369.25
Northing Position (NZMG):	4572716.29
Elevation of Viewpoint Position:	1324.3
Height of Camera Above G round (m):	5.4
Date of Photography:	4 October 2019 at 02:39 PM
Orientation of View:	E

ARTISTIC IMPRESSION SUBJECT TO CHANGE:

The visual simulation depicts approximate location of proposed vegetative screening. During construction, Transco will consider local availability and transplant success rates when selecting the evergreen tree species for visual screening.

The visual simulation depicts trees ranging in height from 14 to 17 feet. Based on the anticipated growth rates, this tree height would be achieved in approximately 10 years.



Viewpoint 03 - Bridge Out Road, East - **Existing View (Pre-Construction)**
Artist Impression Subject to Change

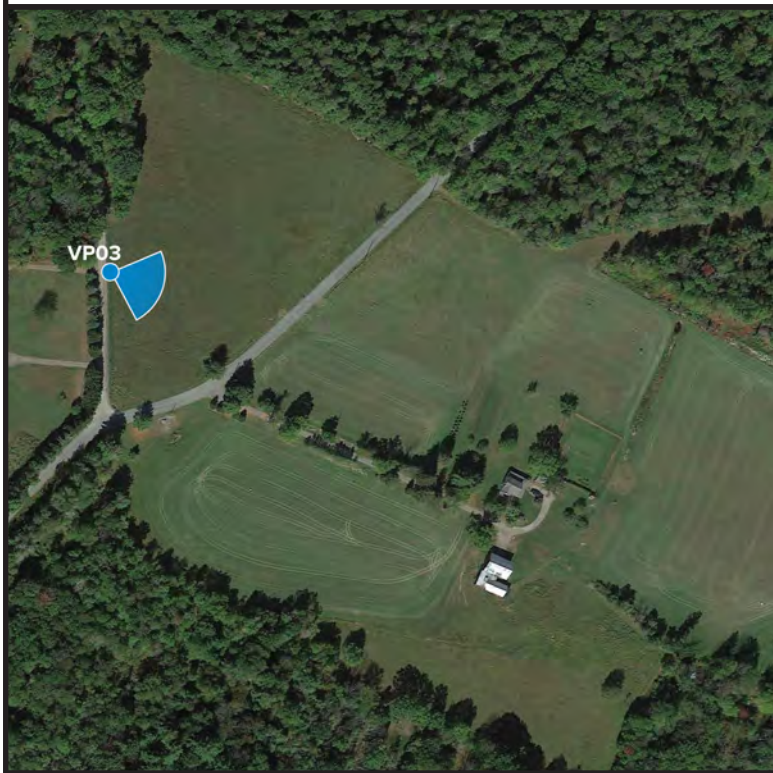


Station 607 Photo Simulations

Viewpoint 03
Bridge Out Road

Looking East
Existing View (Pre-Construction)

Viewpoint Location



NOTES:
This image is a representative view only.

Provided by
Truescape[®]
truescape.com

Easting Position (NZMG):	397297.34
Northing Position (NZMG):	4572622.92
Elevation of Viewpoint Position:	1337.4
Height of Camera Above G round (m):	5.4
Date of Photography:	4 October 2019 at 02:56 PM
Orientation of View:	NE



Viewpoint 03 - Bridge Out Road, East - **Simulated Post-Construction View** - Visual Screening - 4-9 feet
Artist Impression Subject to Change



Station 607 Photo Simulations

Viewpoint 03
Bridge Out Road

Looking East
Simulated Post-Construction View
- Visual Screening - 4-9 feet

● Viewpoint Location



NOTES:
This image is a representative view only.

Provided by

Truescape[®]

truescape.com

Easting Position (NZMG):	397297.34
Northing Position (NZMG):	4572622.92
Elevation of Viewpoint Position:	1337.4
Height of Camera Above G round (m):	5.4
Date of Photography:	4 October 2019 at 02:56 PM
Orientation of View:	NE

ARTISTIC IMPRESSION SUBJECT TO CHANGE:

The visual simulation depicts approximate location of proposed vegetative screening. During construction, Transco will consider local availability and transplant success rates when selecting the evergreen tree species for visual screening.



Viewpoint 03 - Bridge Out Road, East - **Simulated Post-Construction View** - Visual Screening - 14-17 feet
Artist Impression Subject to Change



Station 607 Photo Simulations

Viewpoint 03
Bridge Out Road

Looking East
Simulated Post-Construction View
- Visual Screening - 14-17 feet

Viewpoint Location



NOTES:
This image is a representative view only.

Provided by

Truescape

truescape.com

Easting Position (NZMG):	397297.34
Northing Position (NZMG):	4572622.92
Elevation of Viewpoint Position:	1337.4
Height of Camera Above G round (m):	5.4
Date of Photography:	4 October 2019 at 02:56 PM
Orientation of View:	NE

ARTISTIC IMPRESSION SUBJECT TO CHANGE:

The visual simulation depicts approximate location of proposed vegetative screening. During construction, Transco will consider local availability and transplant success rates when selecting the evergreen tree species for visual screening.

The visual simulation depicts trees ranging in height from 14 to 17 feet. Based on the anticipated growth rates, this tree height would be achieved in approximately 10 years.



Viewpoint 03 - Bridge Out Road, East - **Existing View (Pre-Construction)** - Night
Artist Impression Subject to Change



Station 607 Photo Simulations

Viewpoint 03
Bridge Out Road

Looking East
Existing View - Night
(Pre-Construction)

Viewpoint Location



NOTES:
This image is a representative view only.

Provided by

Truescape

truescape.com

Easting Position (NZMG):	397297.34
Northing Position (NZMG):	4572622.92
Elevation of Viewpoint Position:	1337.4
Height of Camera Above Ground (m):	5.4
Date of Photography:	4 October 2019 at 02:56 PM
Orientation of View:	NE



Viewpoint 03 - Bridge Out Road, East - **Simulated Post-Construction View** - Visual Screening - 4-9 feet - Night
Artist Impression Subject to Change



Station 607 Photo Simulations

Viewpoint 03
Bridge Out Road

Looking East
Simulated Post-Construction View
- Visual Screening - 4-9 feet - Night

Viewpoint Location



NOTES:
This image is a representative view only.

Provided by

Truescape

truescape.com

Easting Position (NZMG):	397297.34
Northing Position (NZMG):	4572622.92
Elevation of Viewpoint Position:	1337.4
Height of Camera Above Ground (m):	5.4
Date of Photography:	4 October 2019 at 02:56 PM
Orientation of View:	NE

ARTISTIC IMPRESSION SUBJECT TO CHANGE:

The visual simulation depicts approximate location of proposed vegetative screening. During construction, Transco will consider local availability and transplant success rates when selecting the evergreen tree species for visual screening.



Viewpoint 03 - Bridge Out Road, East - **Simulated Post-Construction View** - Visual Screening - 14-17 feet - Night
Artist Impression Subject to Change



Station 607 Photo Simulations

Viewpoint 03
Bridge Out Road

Looking East
Simulated Post-Construction View
- Visual Screening - 14-17 feet - Night

● Viewpoint Location



NOTES:
This image is a representative view only.

Provided by

Truescape[®]

truescape.com

Easting Position (NZMG):	397297.34
Northing Position (NZMG):	4572622.92
Elevation of Viewpoint Position:	1337.4
Height of Camera Above Ground (m):	5.4
Date of Photography:	4 October 2019 at 02:56 PM
Orientation of View:	NE

ARTISTIC IMPRESSION SUBJECT TO CHANGE:

The visual simulation depicts approximate location of proposed vegetative screening. During construction, Transco will consider local availability and transplant success rates when selecting the evergreen tree species for visual screening.

The visual simulation depicts trees ranging in height from 14 to 17 feet. Based on the anticipated growth rates, this tree height would be achieved in approximately 10 years.