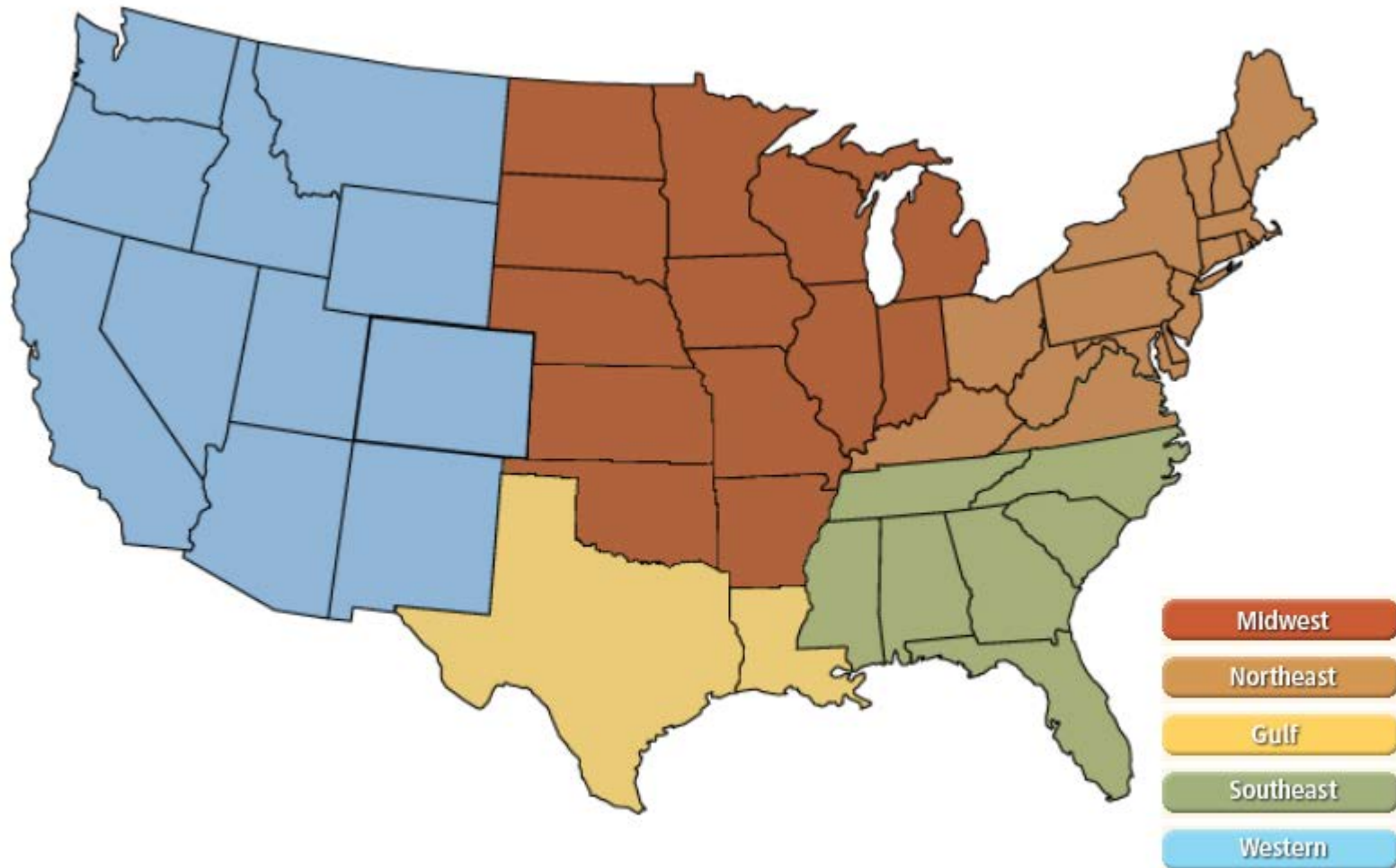
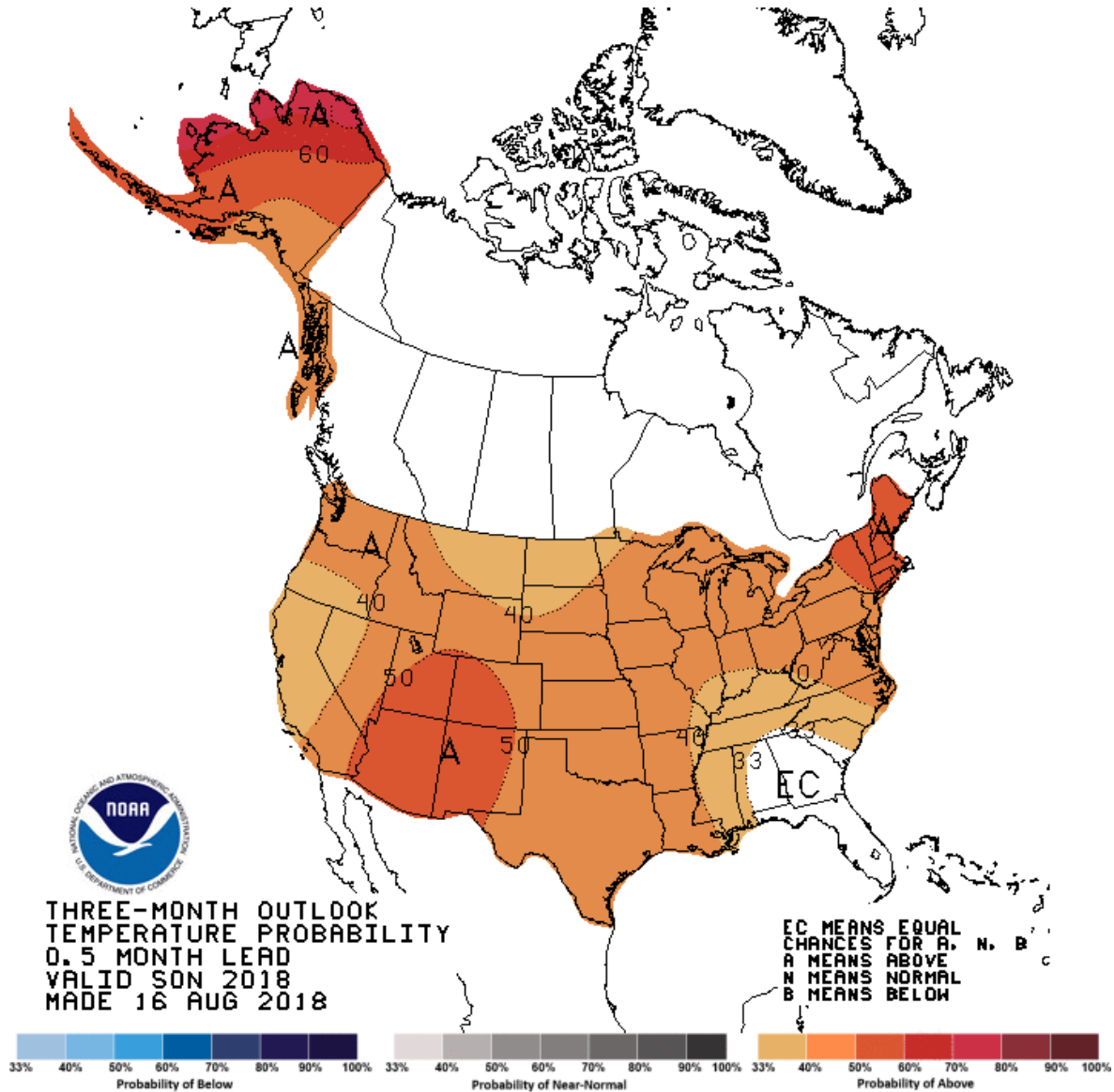


National



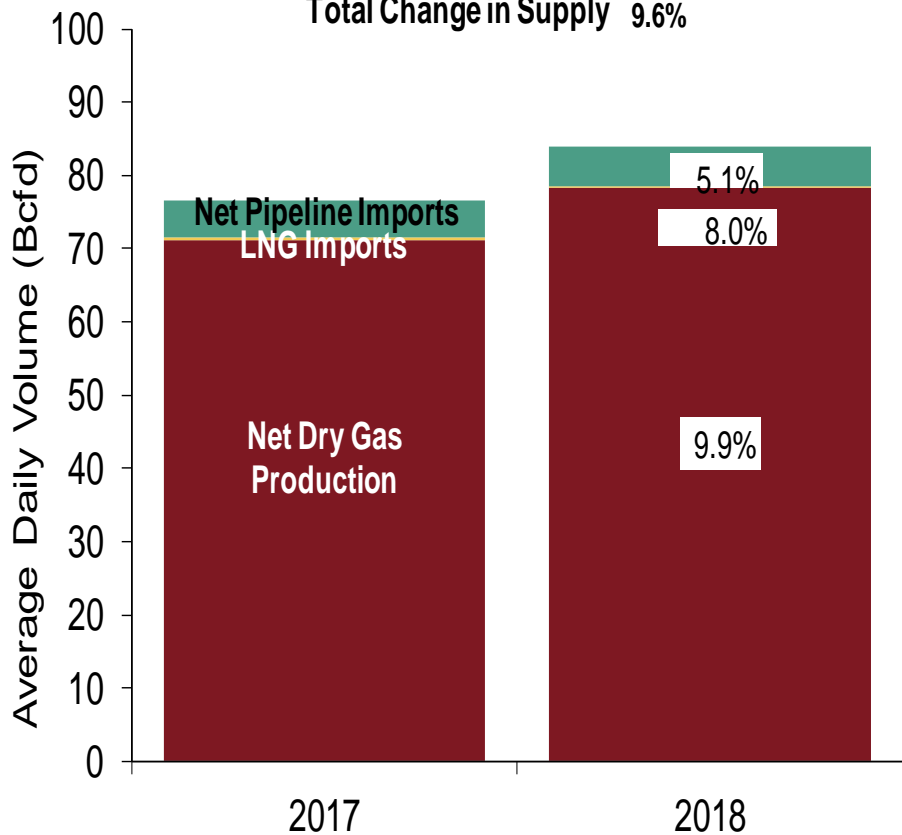
NOAA 3 Month Outlook



U.S. NG Supply and Demand Aug-17 YTD vs. Aug-18 YTD

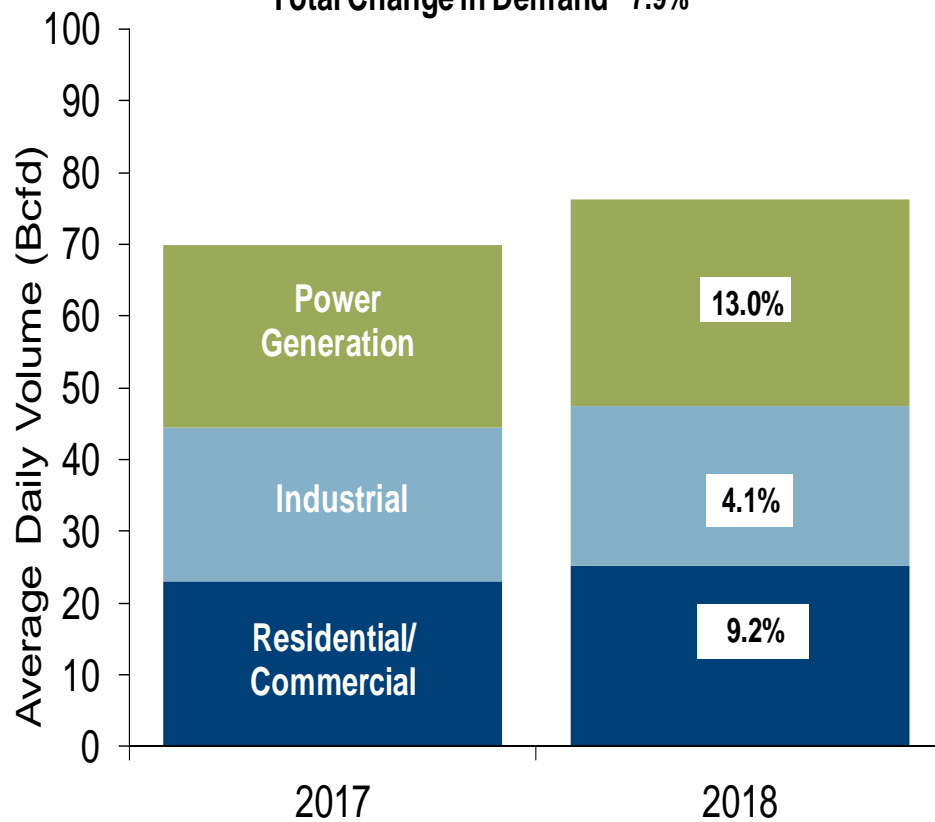
US Natural Gas Supply

Total Change in Supply 9.6%



US Natural Gas Demand

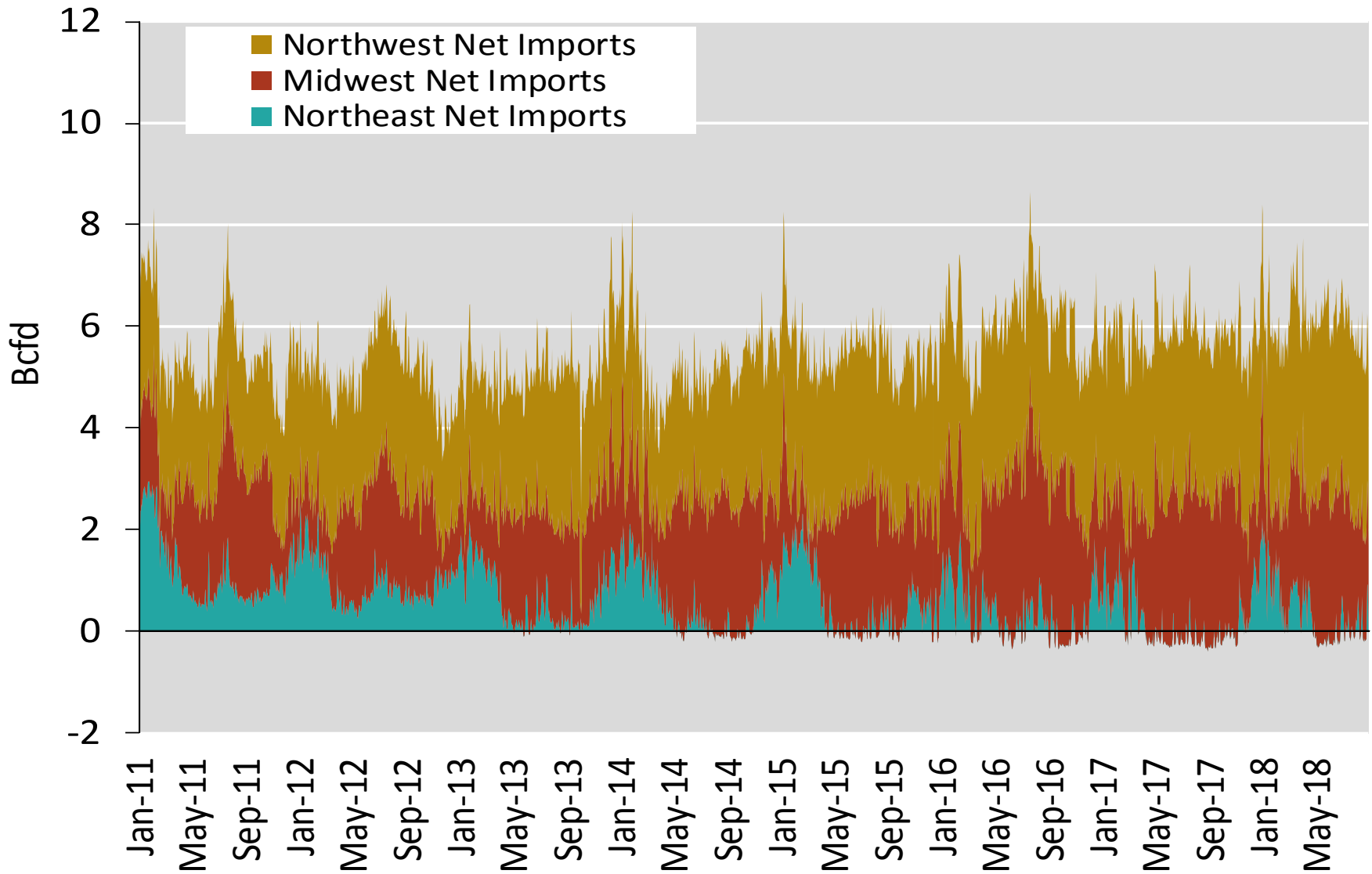
Total Change in Demand 7.9%



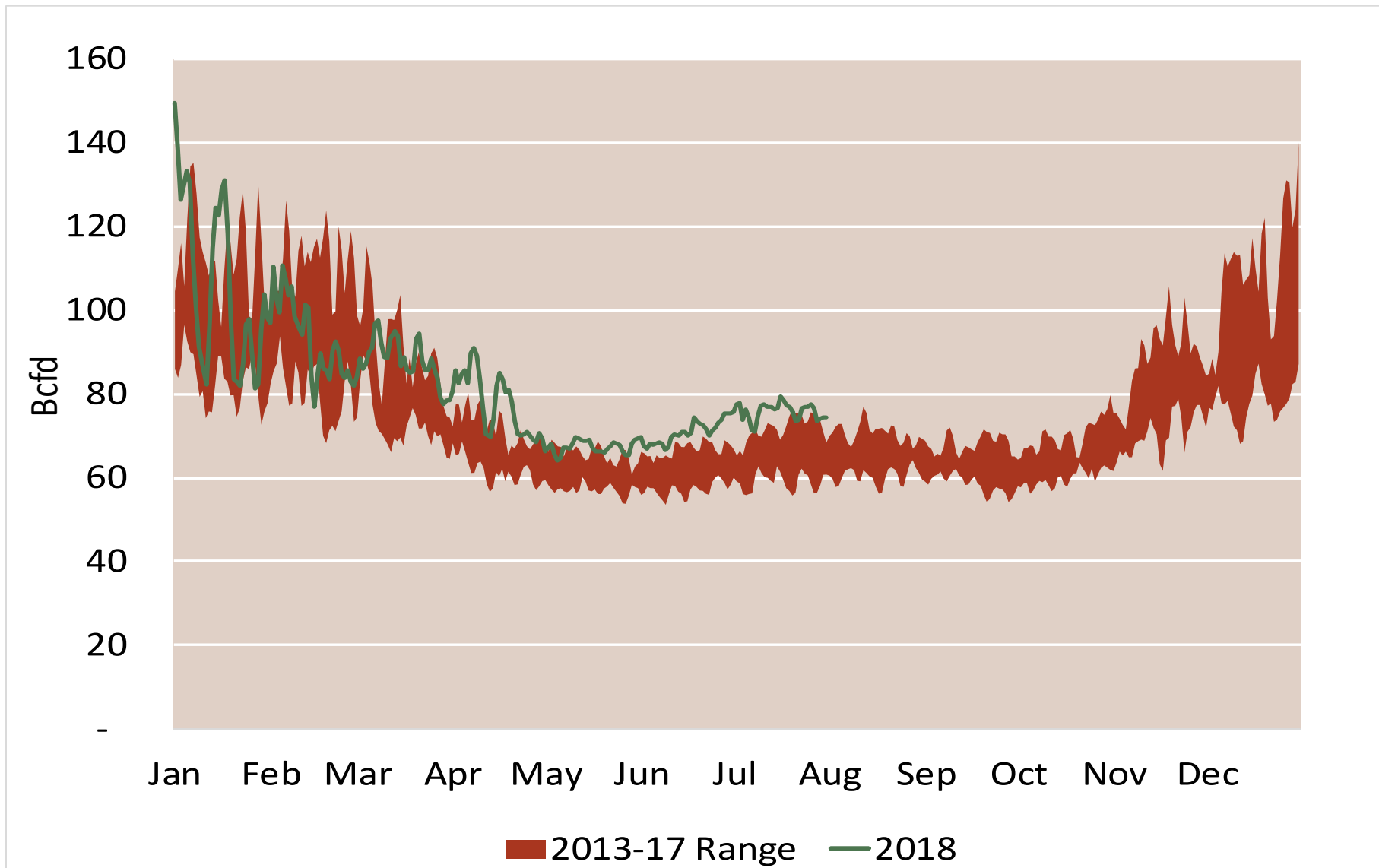
Note: Balance includes all amounts not attributable to other categories.

Source: Derived from *Bentek Energy* data

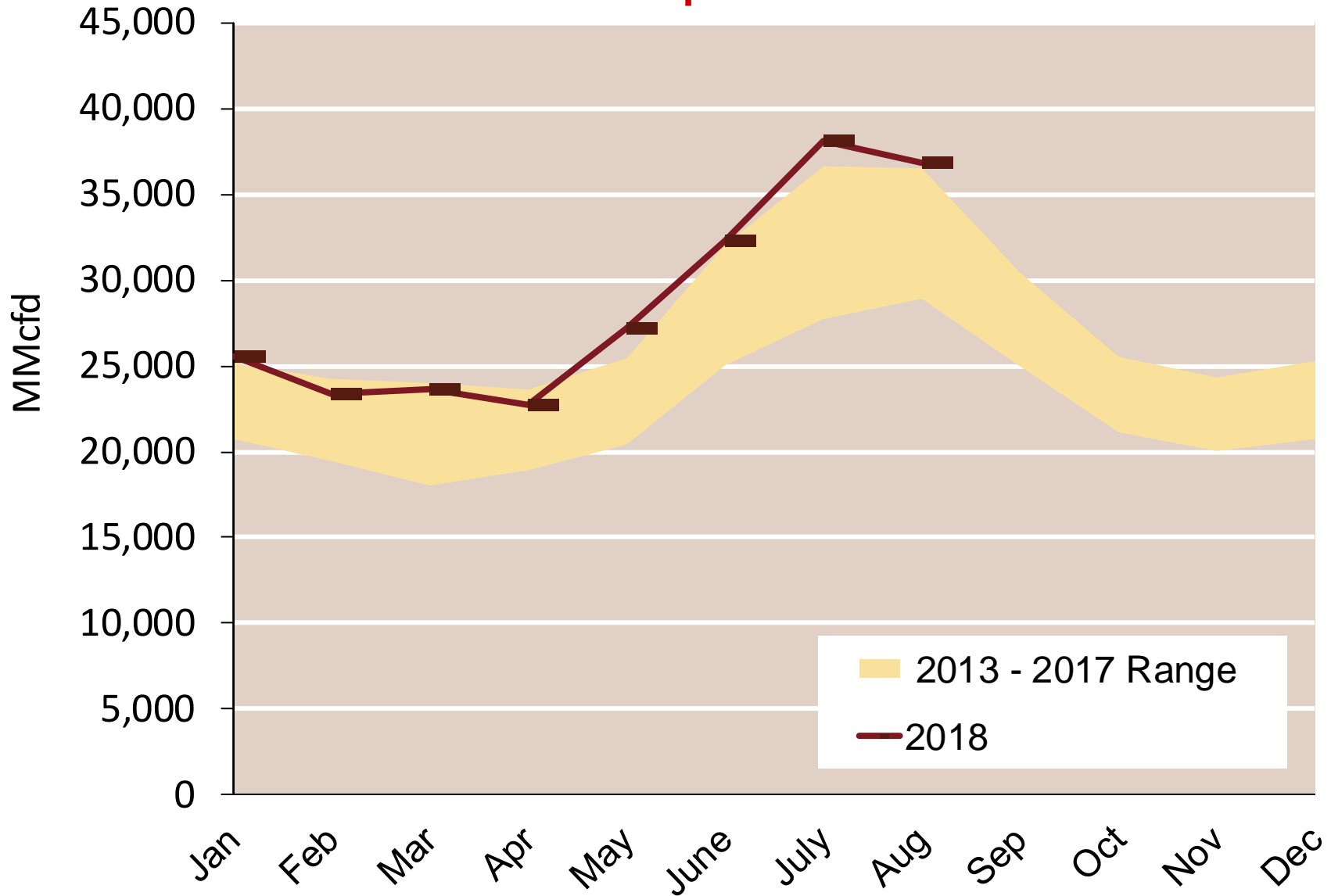
Regional Canadian Imports



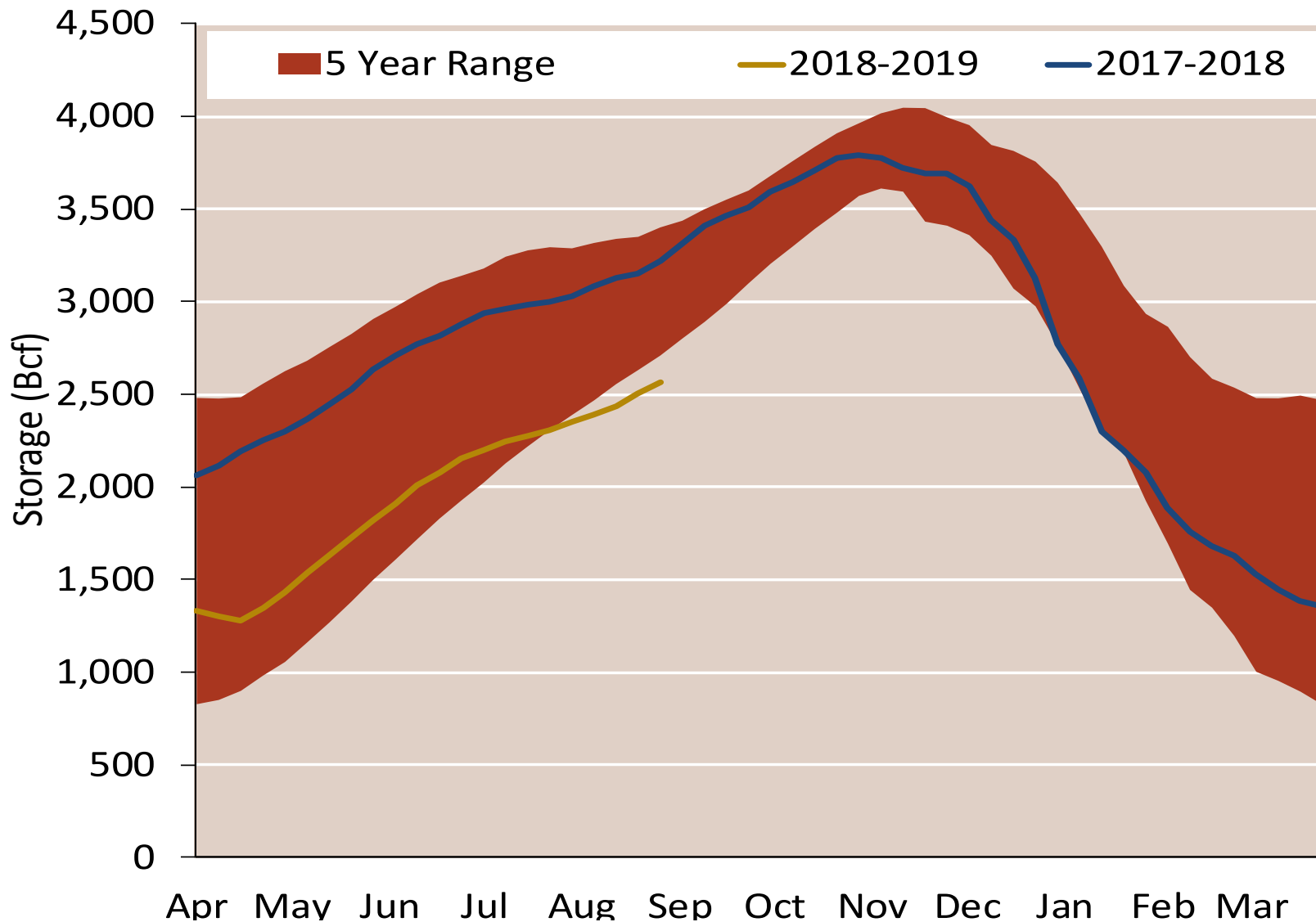
Total U.S. Natural Gas Demand All Sectors



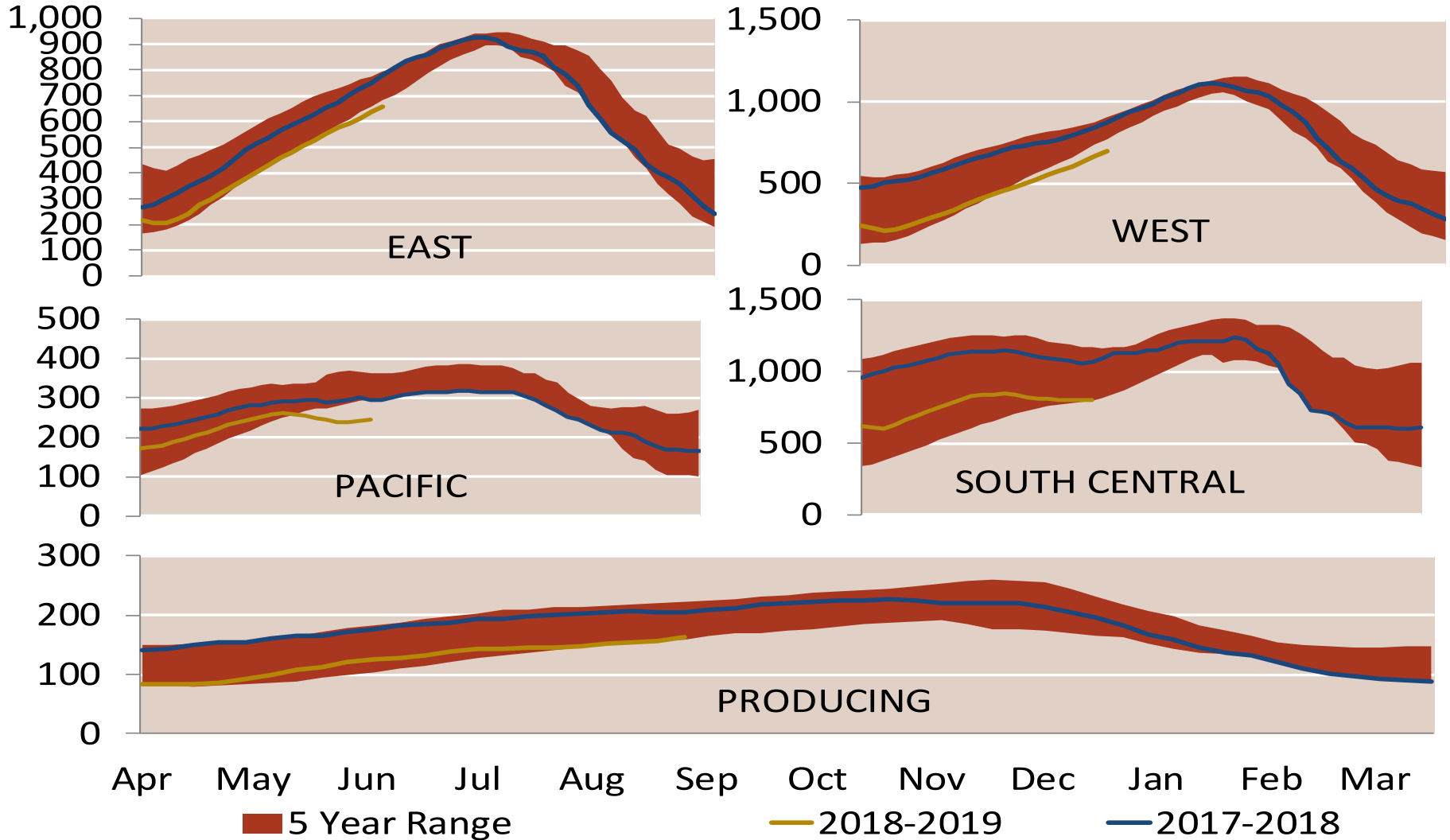
U.S. Natural Gas Consumption for Power Generation



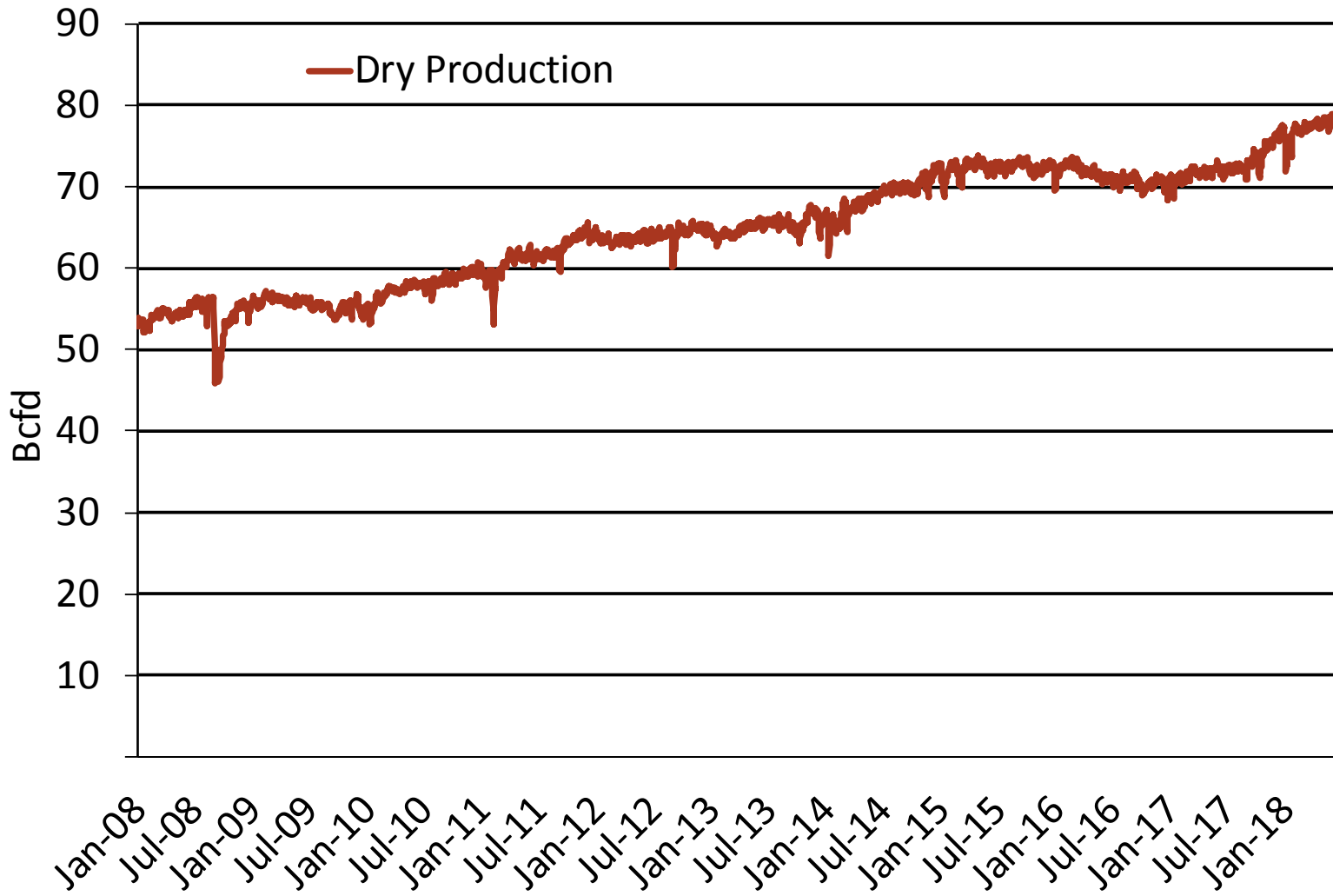
EIA Storage Inventories



EIA Storage Inventories

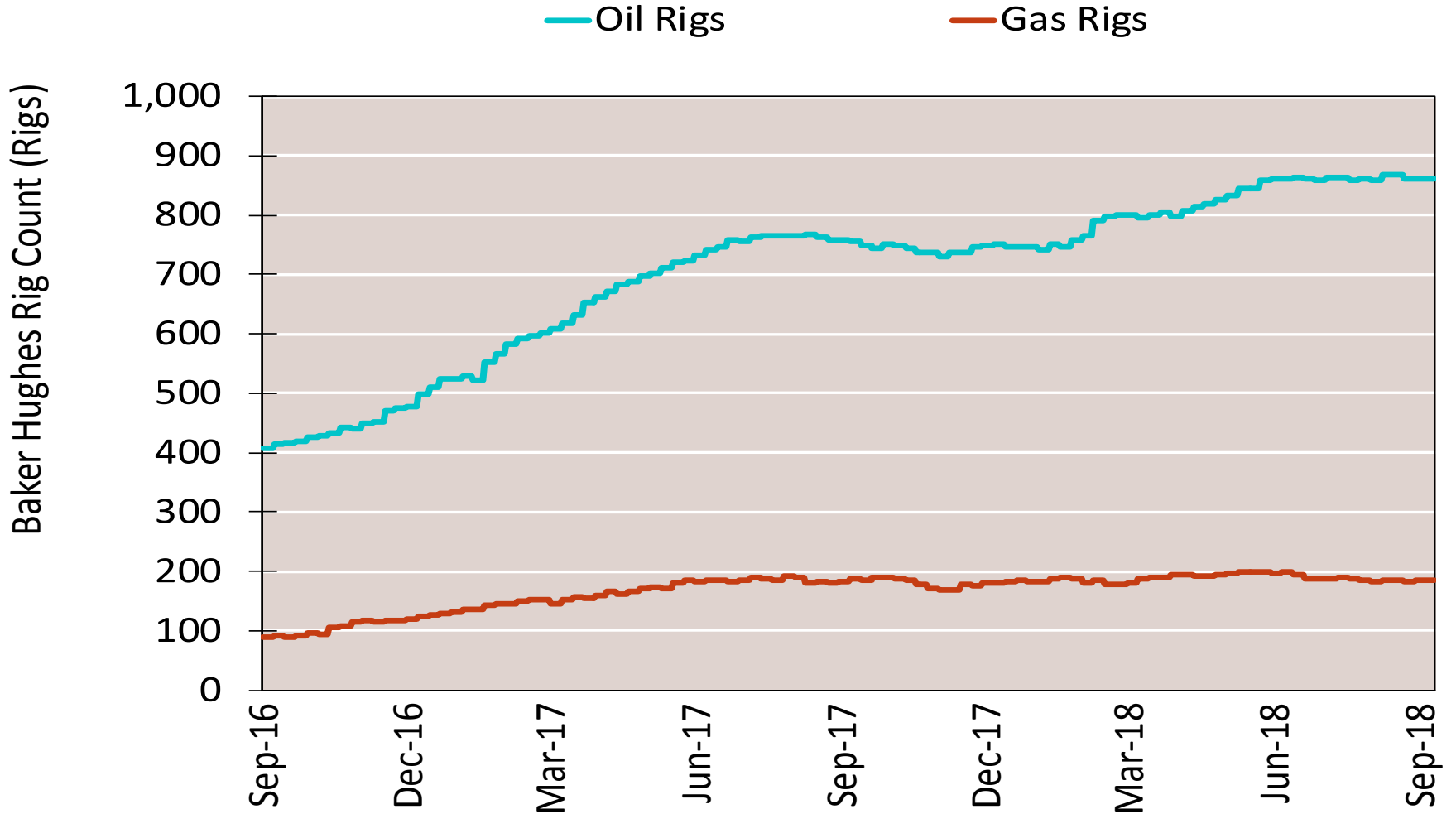


Monthly U.S. Dry Gas Production – Lower 48 States



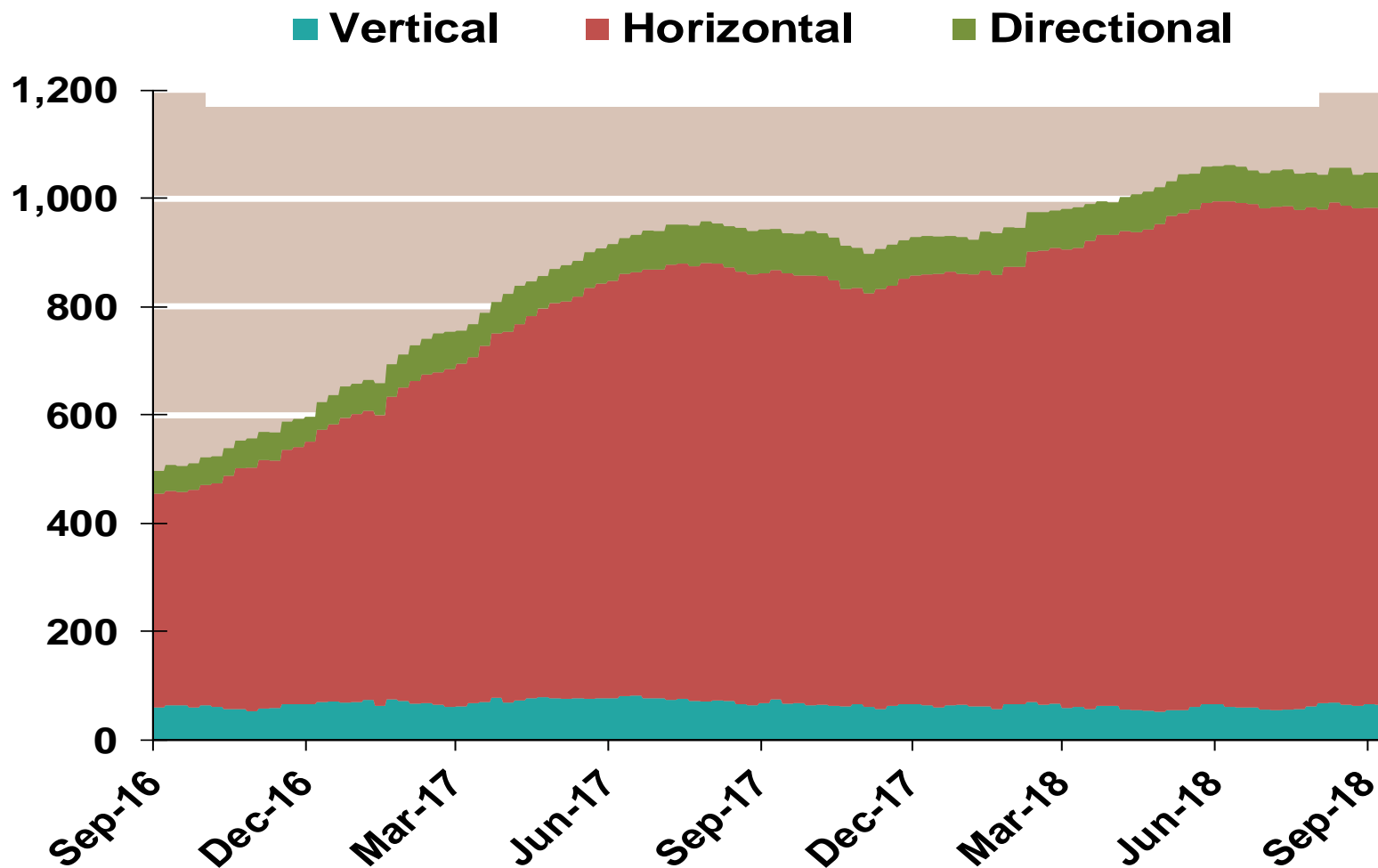
Note: Prior to July 2010, chart was derived from a combination of EIA and Bentek Energy data
Source: Derived from Bentek Energy data

NG Rigs by Fuel Type

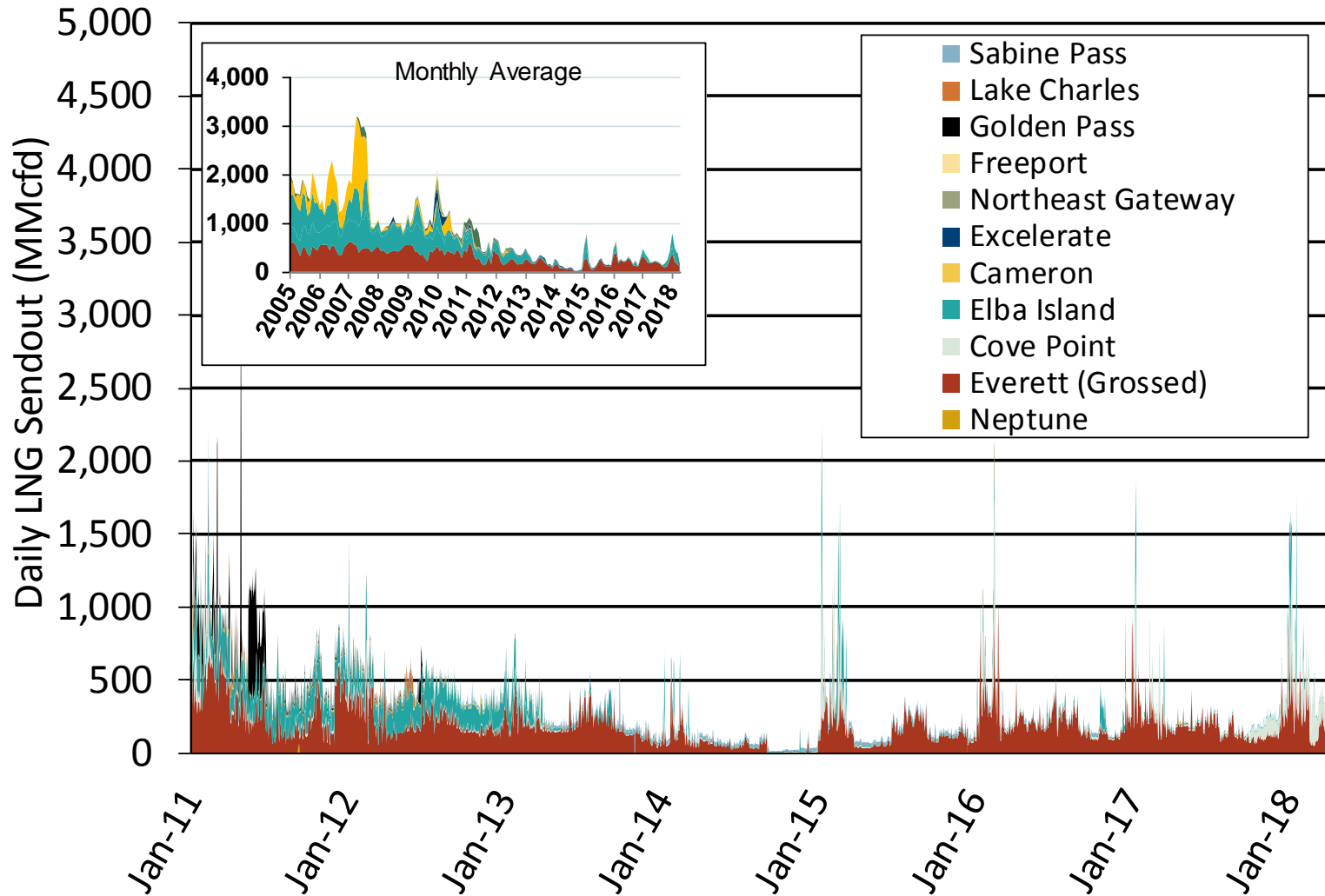


NG Rig by Direction

Baker Hughes Rigs By Drill Type



Daily Gas Sendout from Existing U.S. LNG Facilities



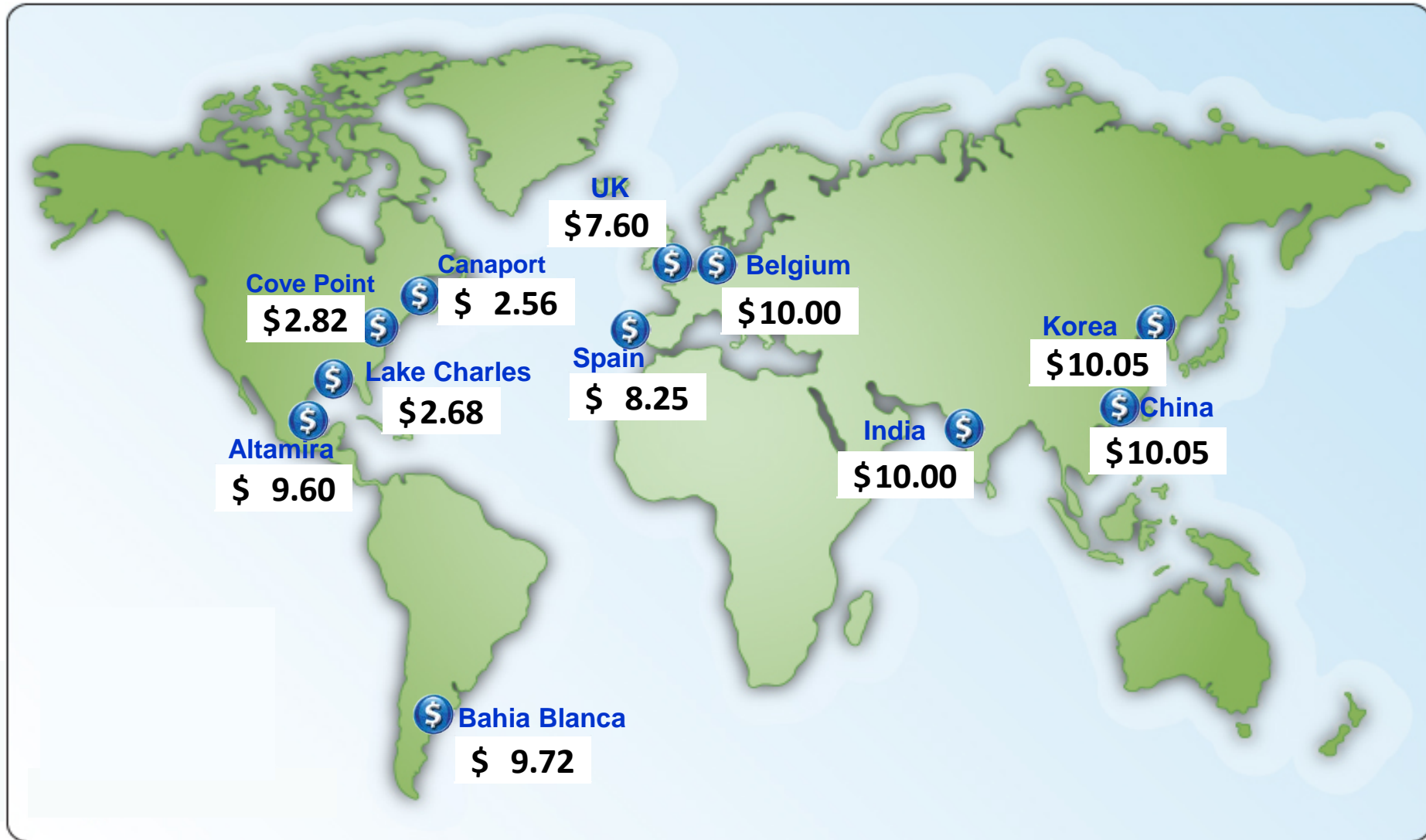
Notes: Everett data includes flows onto the AGT and TGP interstate lines, plus estimates of flows to the Mystic 7 power plant, Keyspan Boston Gas, and LNG trucked out of the terminal. Excludes flows to the Freeport LNG which flows via intrastate pipelines and flows to the Mystic 8 and 9 power plants.

Source: Derived from *Bentek Energy* data

Updated:

June 2018

World LNG Estimated Landed Prices: Aug-18



Source: *Waterborne Energy, Inc.* Data in \$US/MMBtu.

Note: Includes information and Data supplied by IHS Global Inc. and its affiliates ("IHS"); Copyright (publication year) all rights reserved. Prices are the monthly average of the weekly landed prices for the listed month. Landed prices are based on a netback calculation.

Updated: Sep-18

U.S. Exports of LNG

