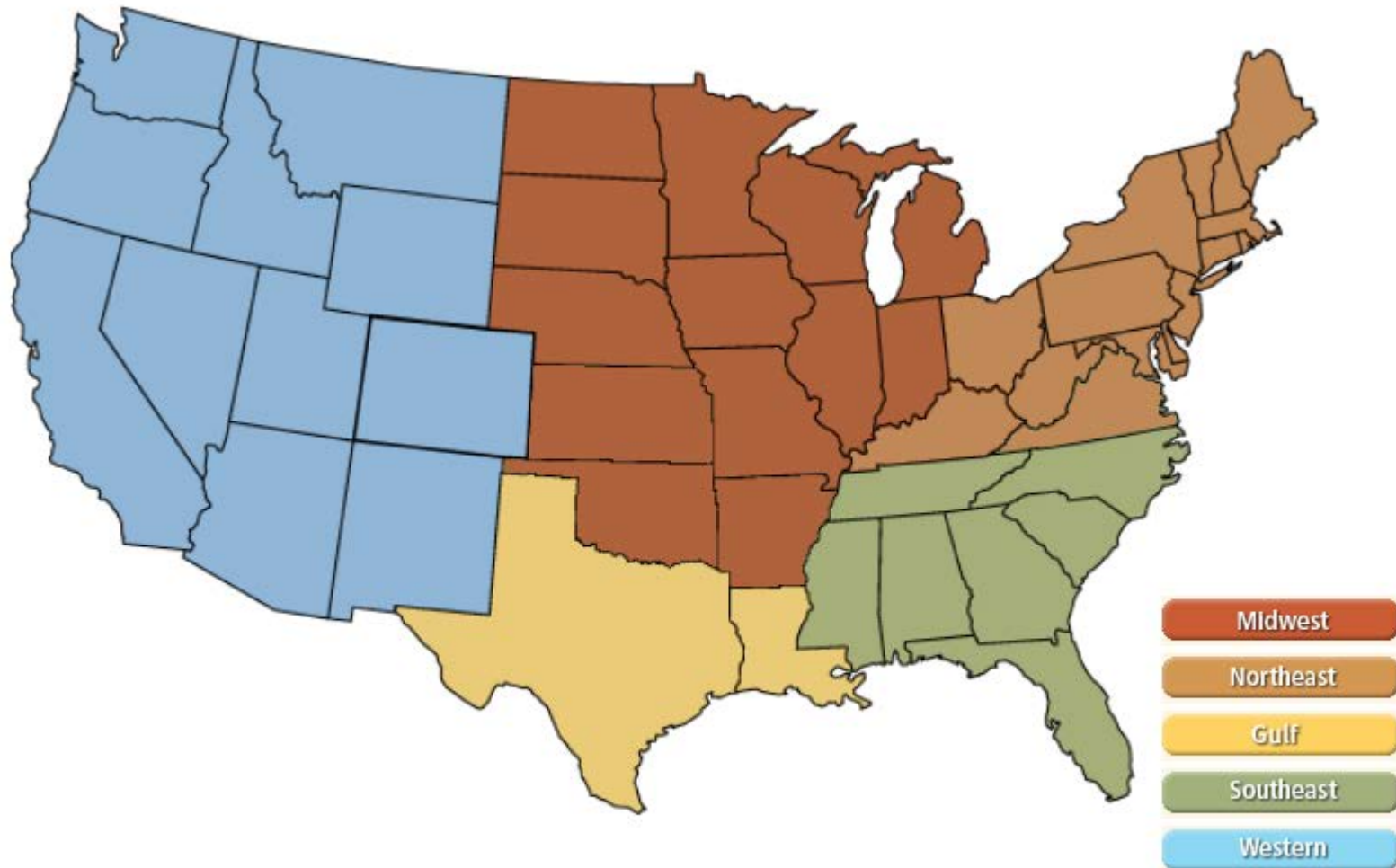
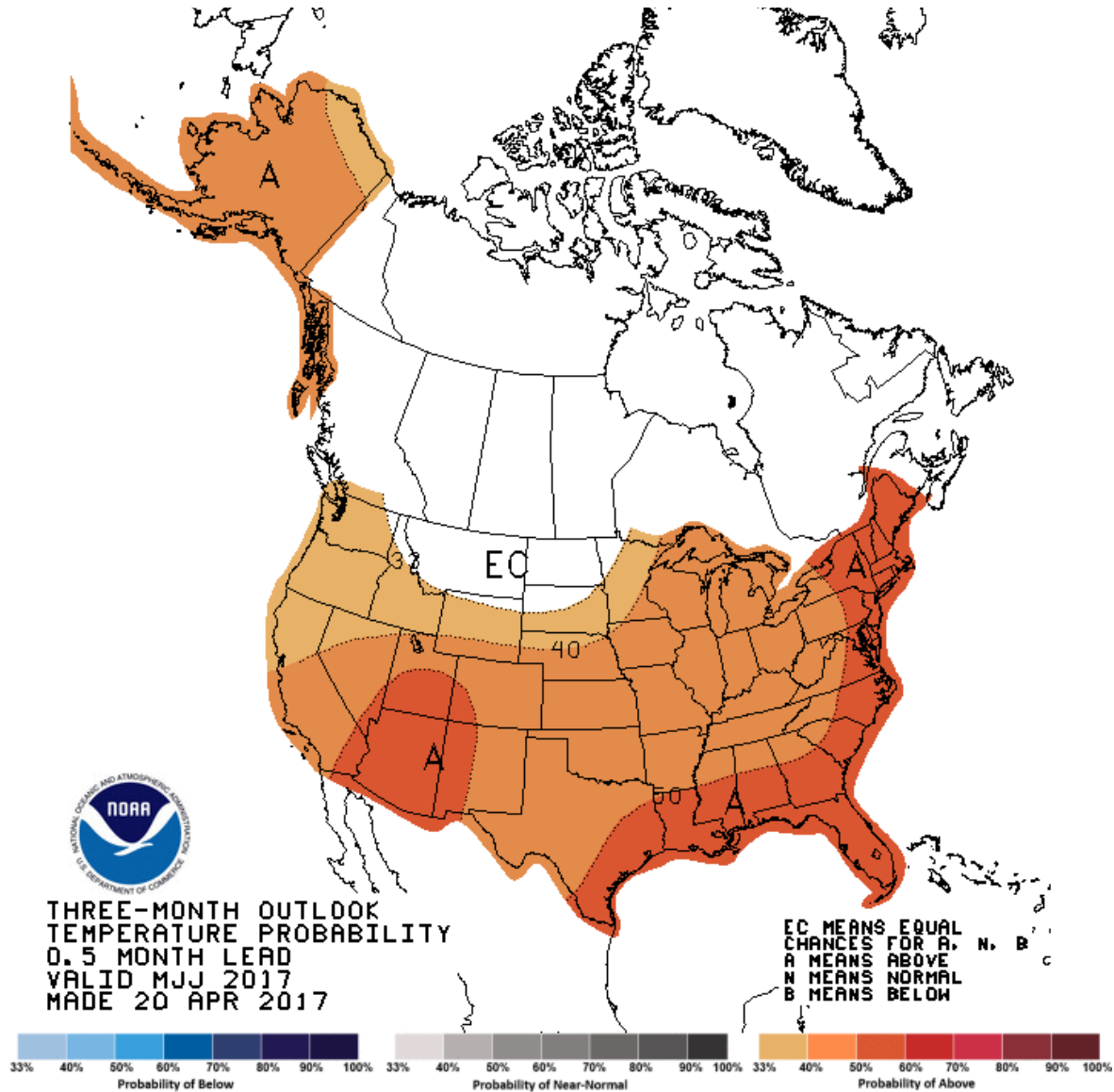


## National

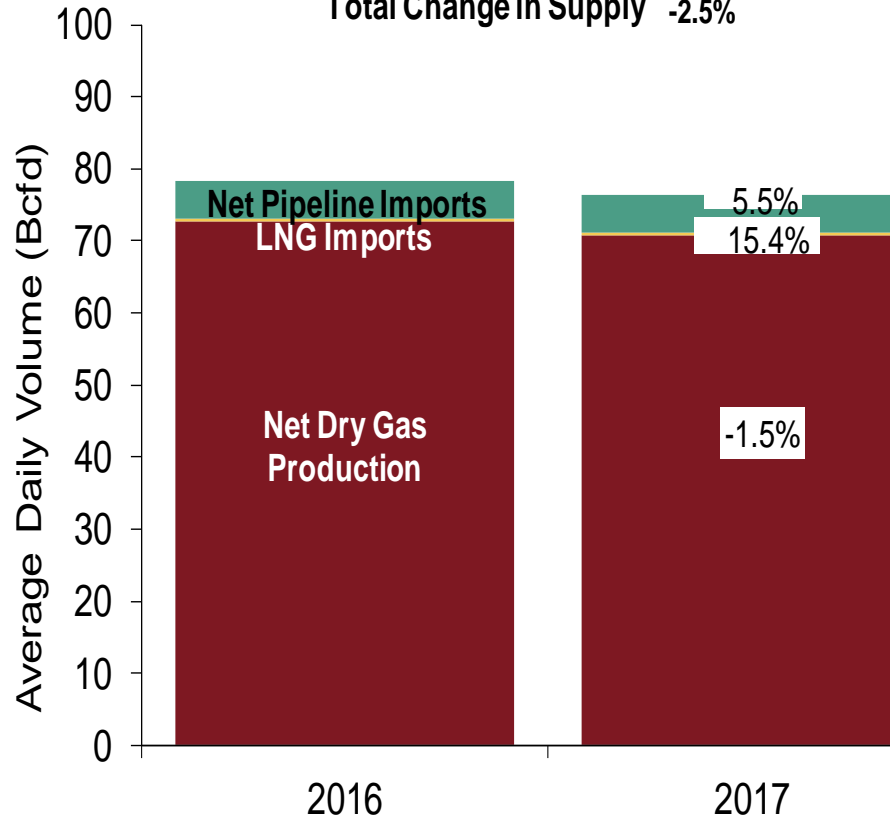


# NOAA 3 Month Outlook

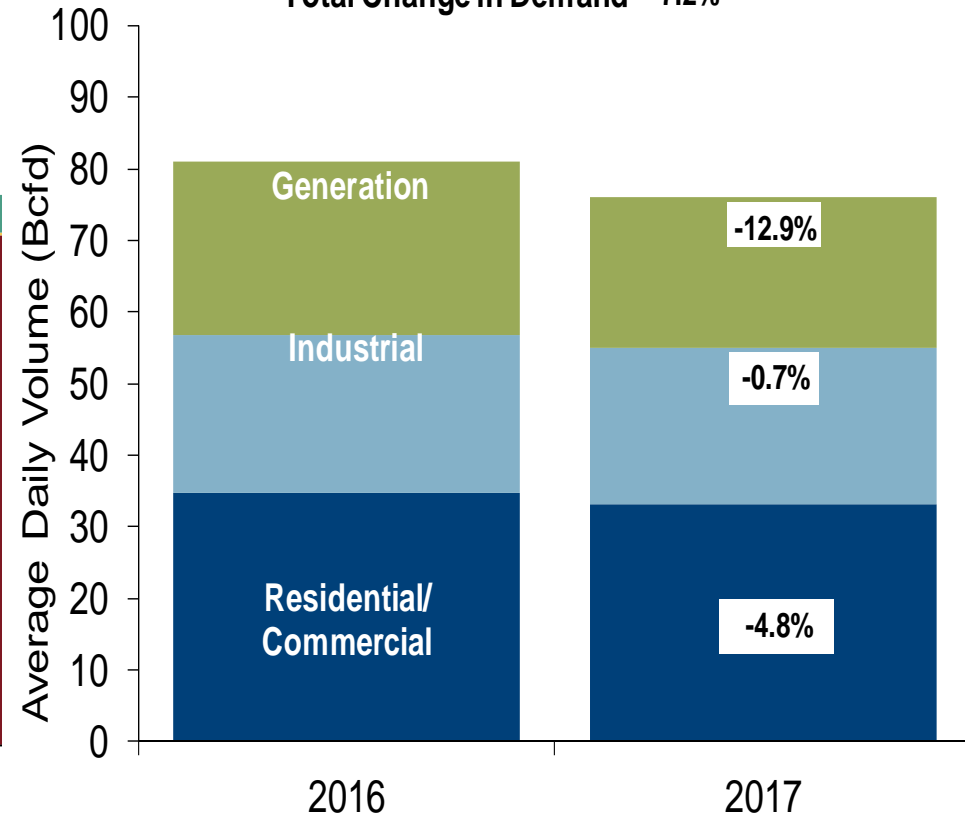


**U.S. NG Supply and Demand Apr-16 YTD vs. Apr-17 YTD**

**US Natural Gas Supply**  
Total Change in Supply -2.5%

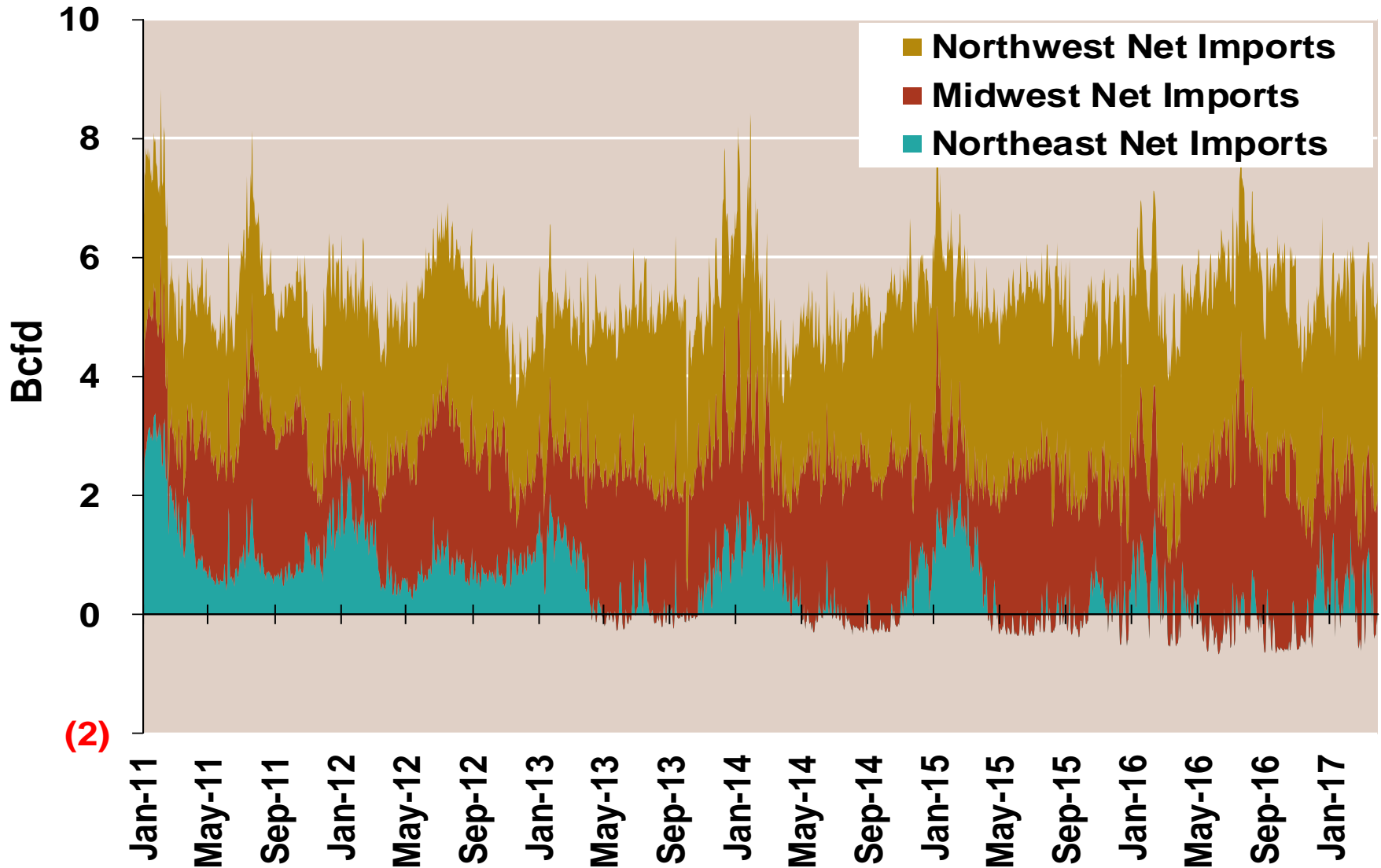


**US Natural Gas Demand**  
Total Change in Demand -7.2%

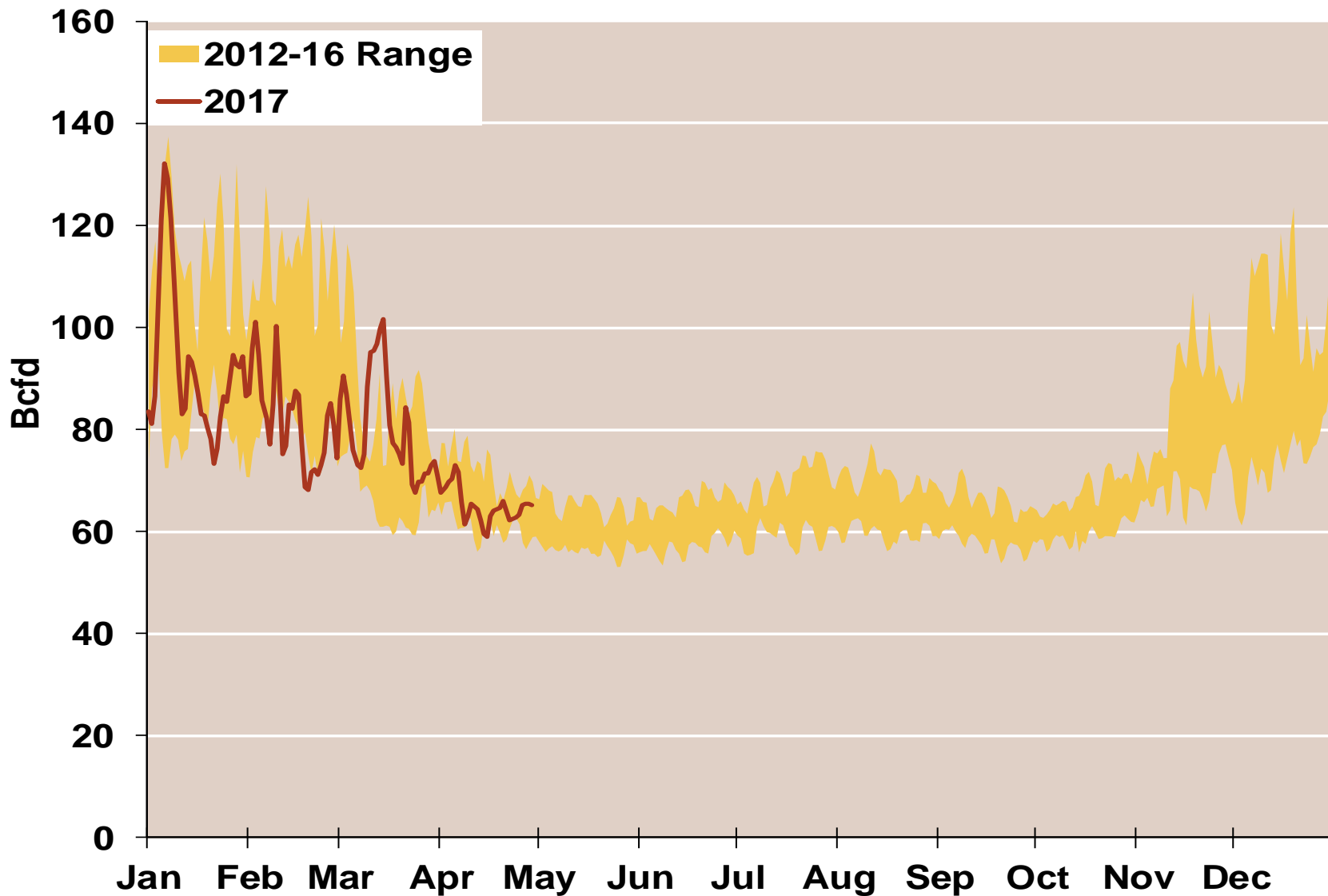


Note: Balance includes all amounts not attributable to other categories.  
Source: Derived from *Bentek Energy* data

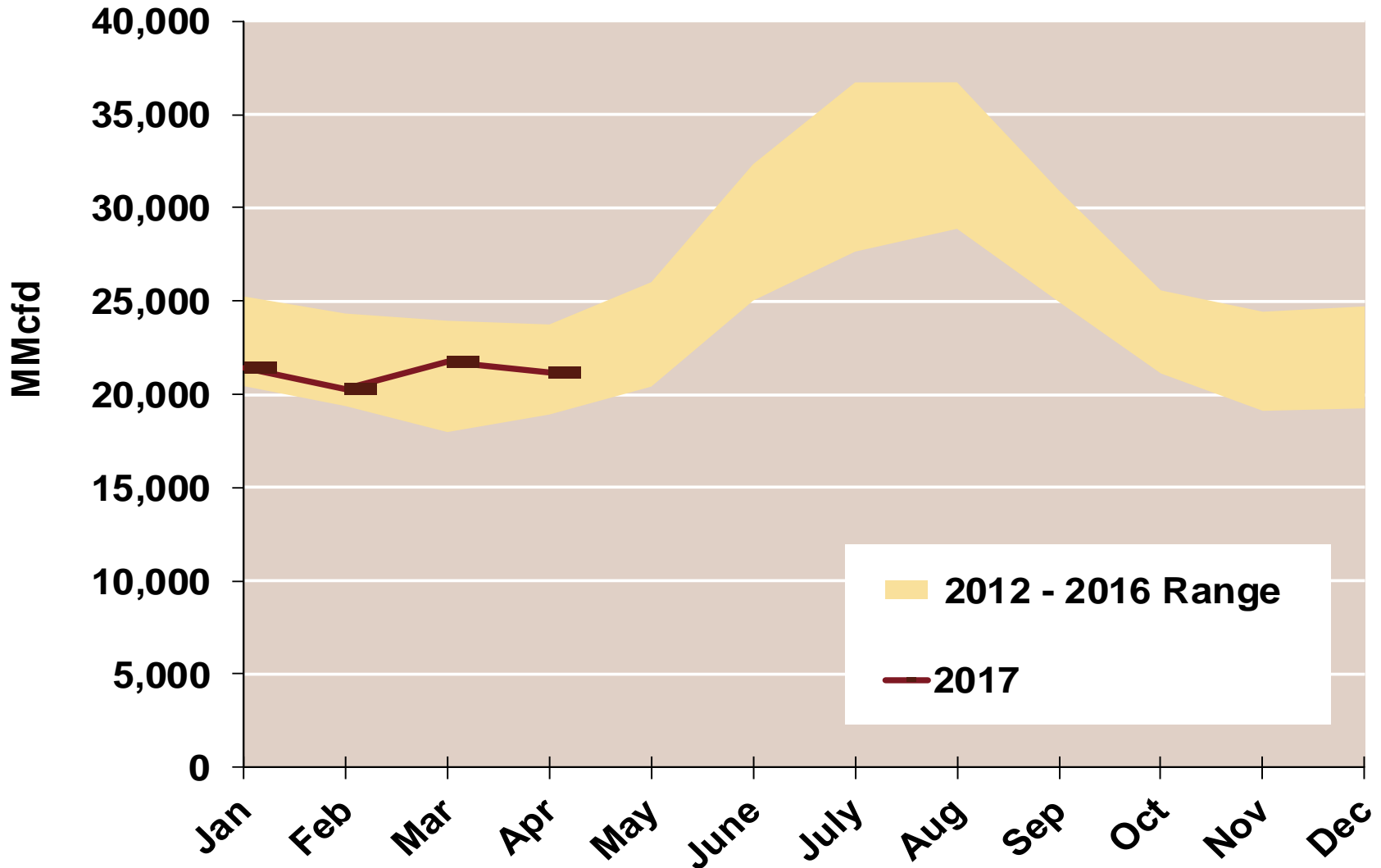
## Regional Canadian Imports



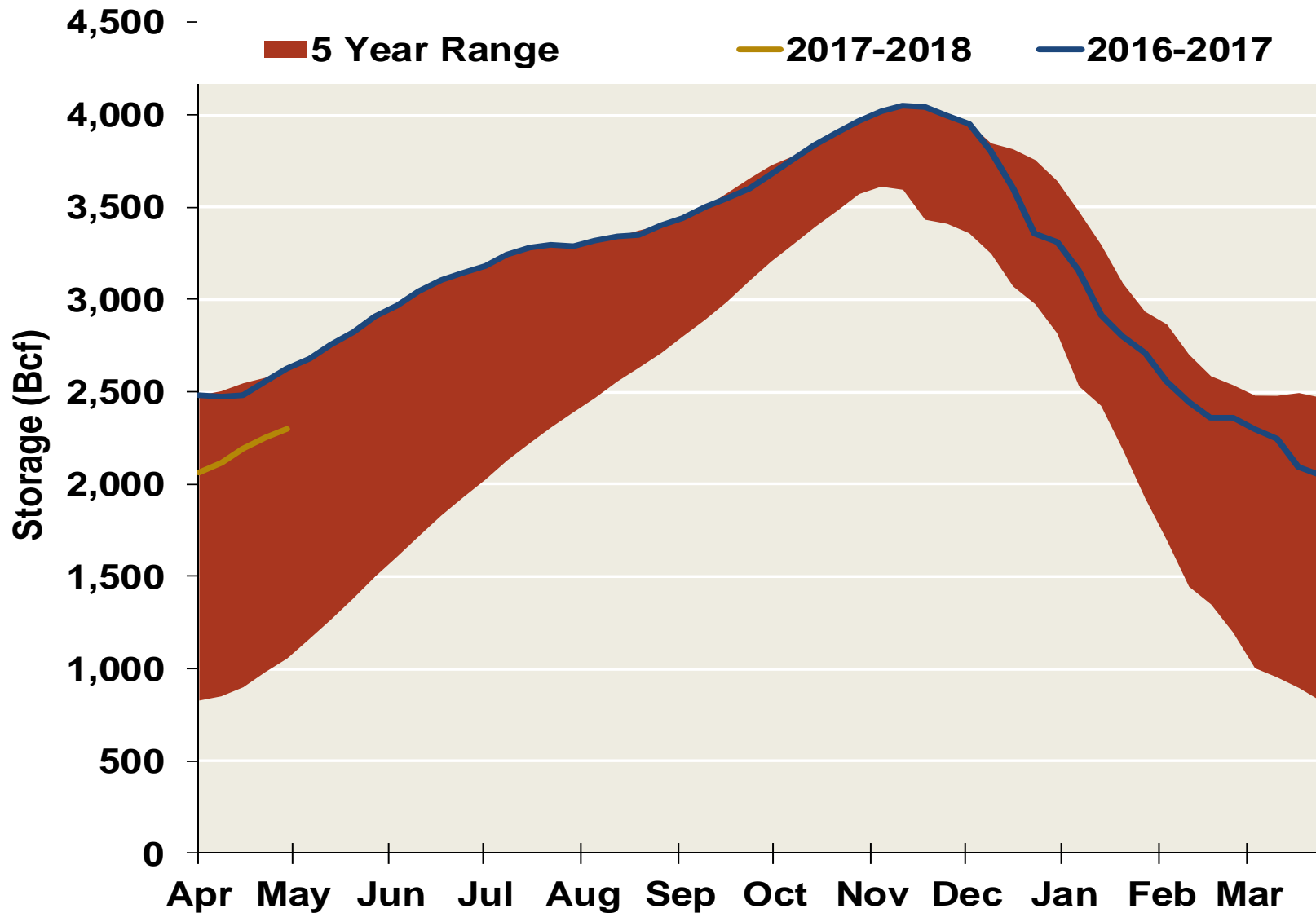
## Total U.S. Natural Gas Demand All Sectors



## U.S. Natural Gas Consumption for Power Generation



## EIA Storage Inventories



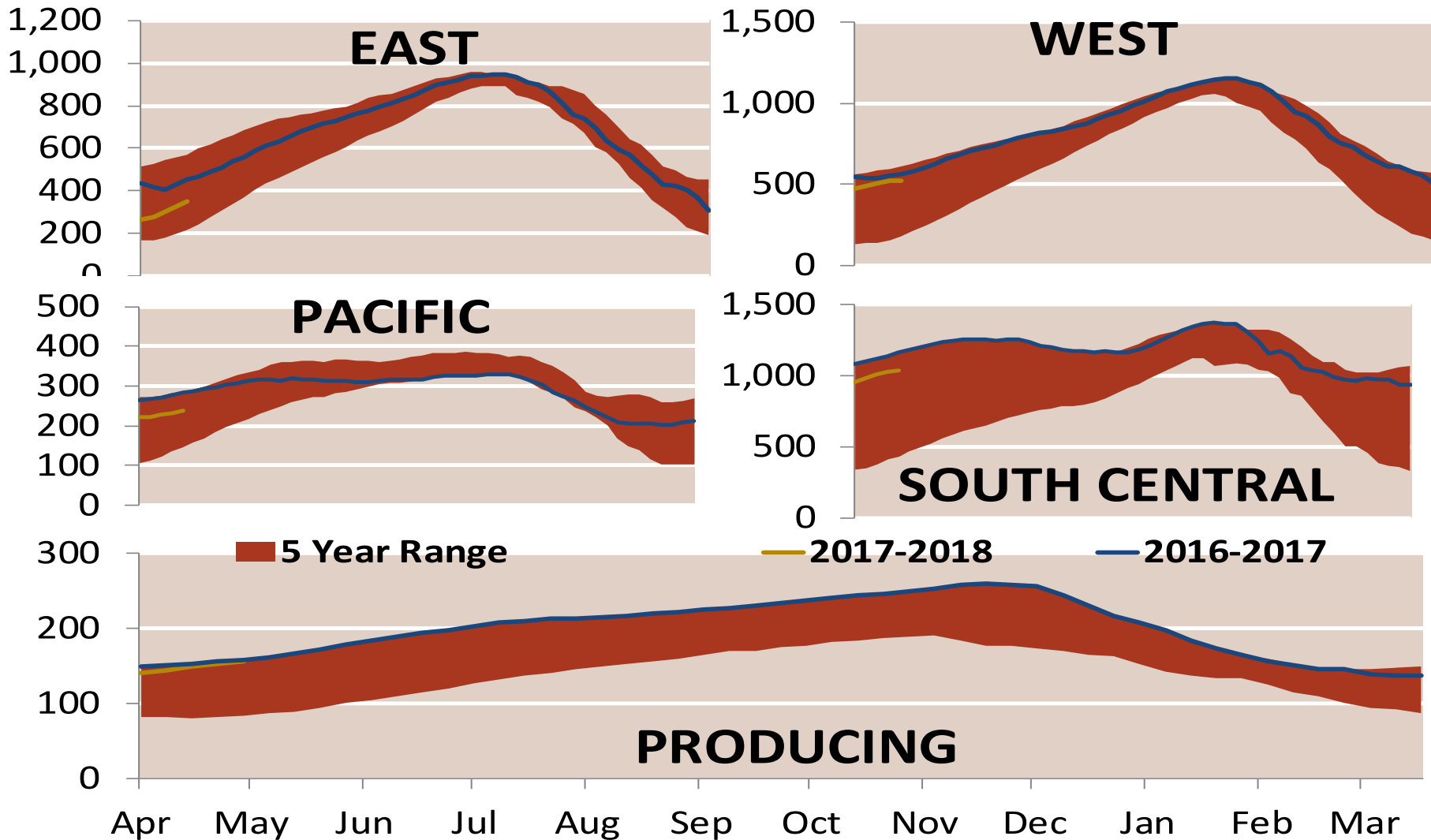
Notes:

Source: Derived from Bloomberg Data

Updated

May-17

## EIA Storage Inventories



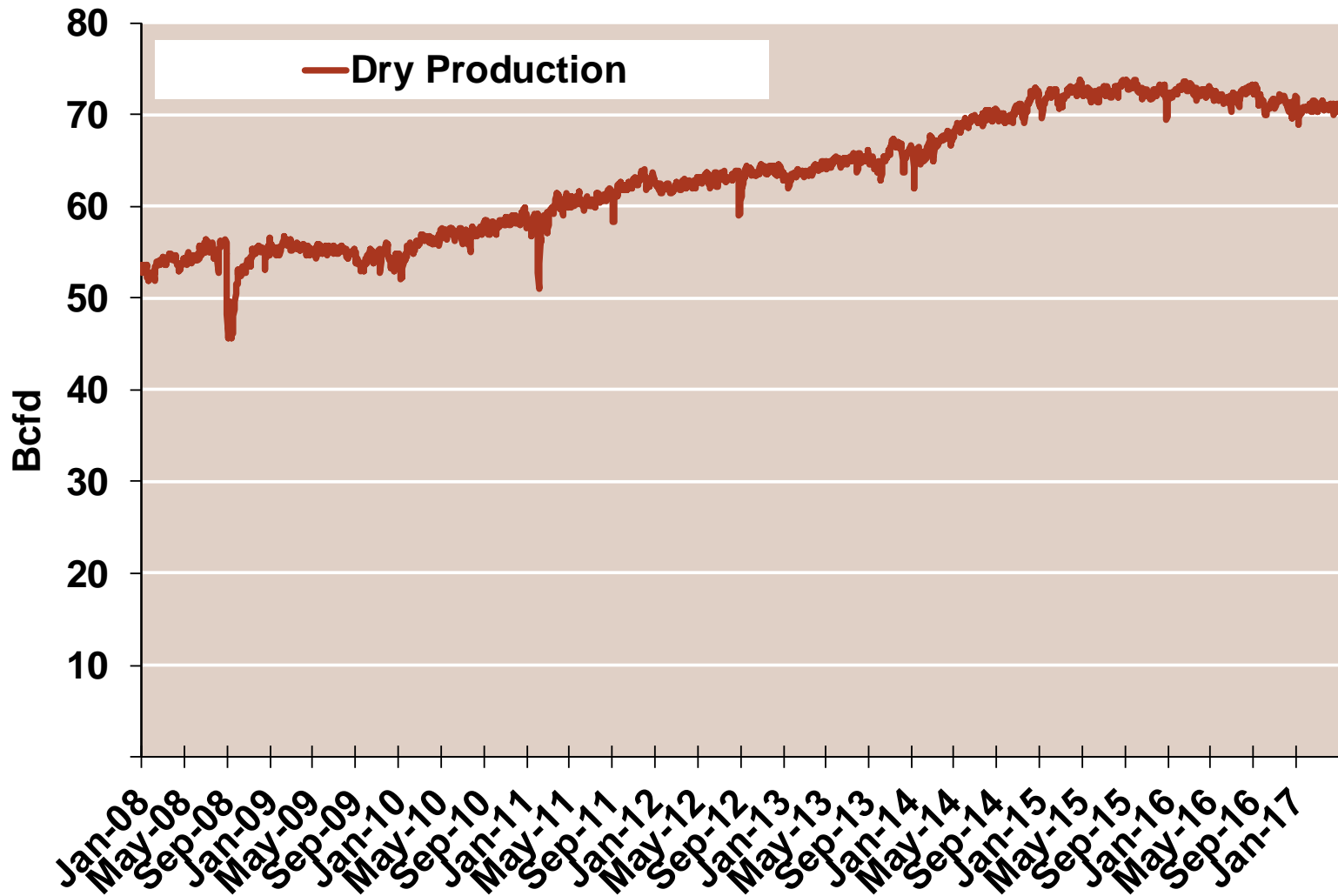
Notes:

Source: Derived from Bloomberg Data

Updated May-17

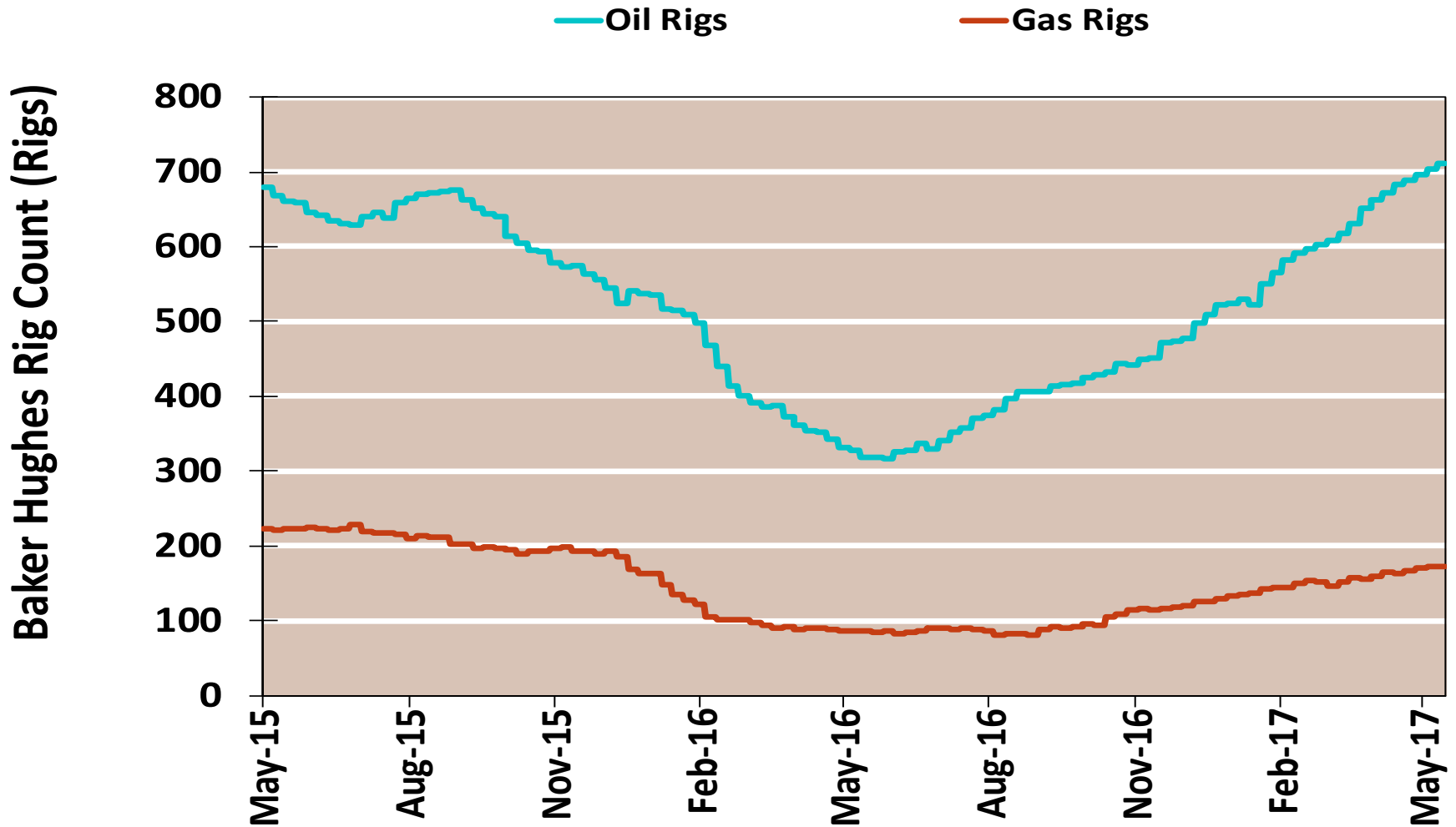


## Monthly U.S. Dry Gas Production – Lower 48 States



Note: Prior to July 2010, chart was derived from a combination of EIA and Bentek Energy data  
Source: Derived from Bentek Energy data

## NG Rigs by Fuel Type



Notes:

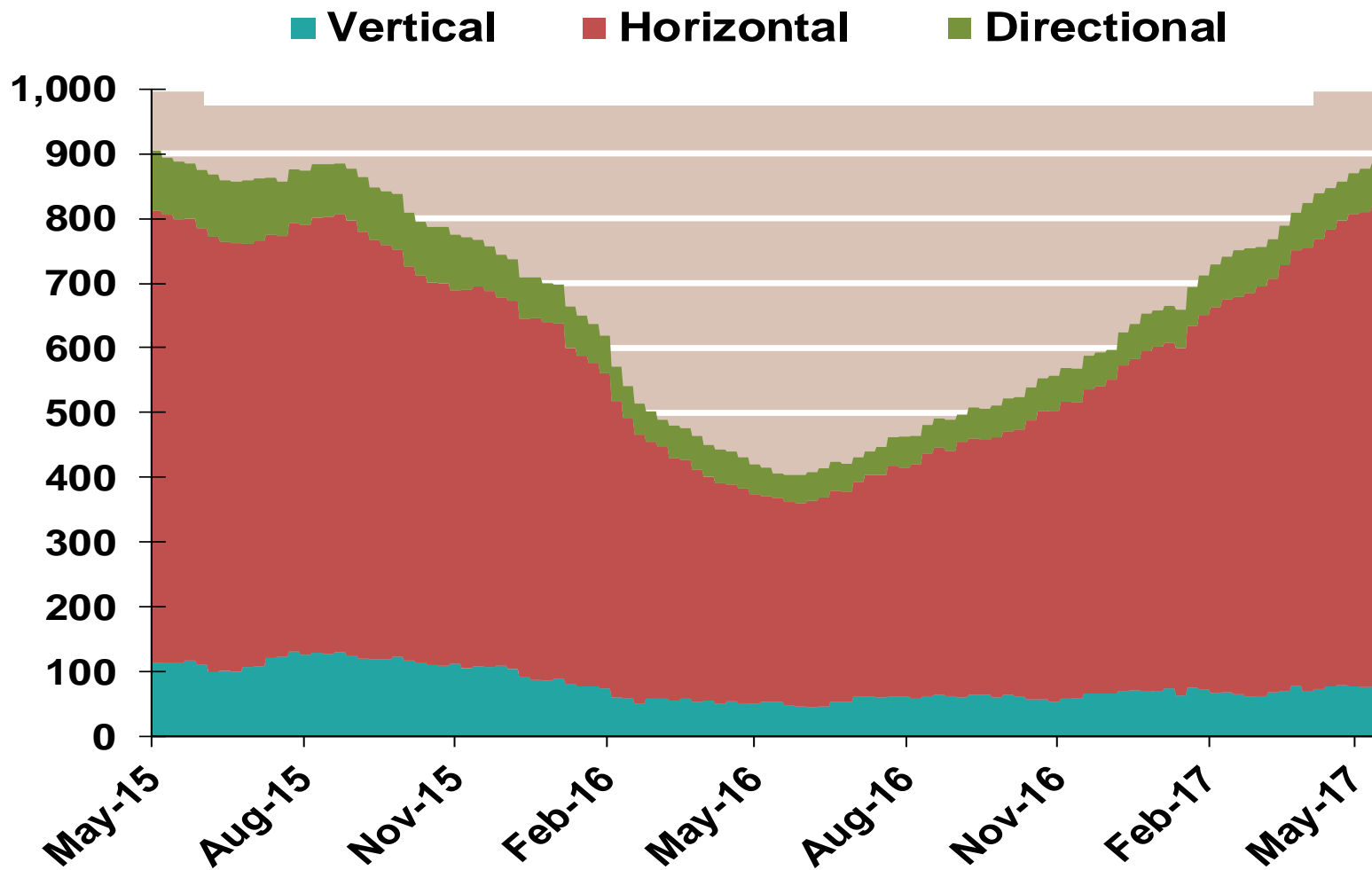
Source: Derived from Bloomberg data

Updated

May-17

## NG Rig by Direction

Baker Hughes Rigs By Drill Type



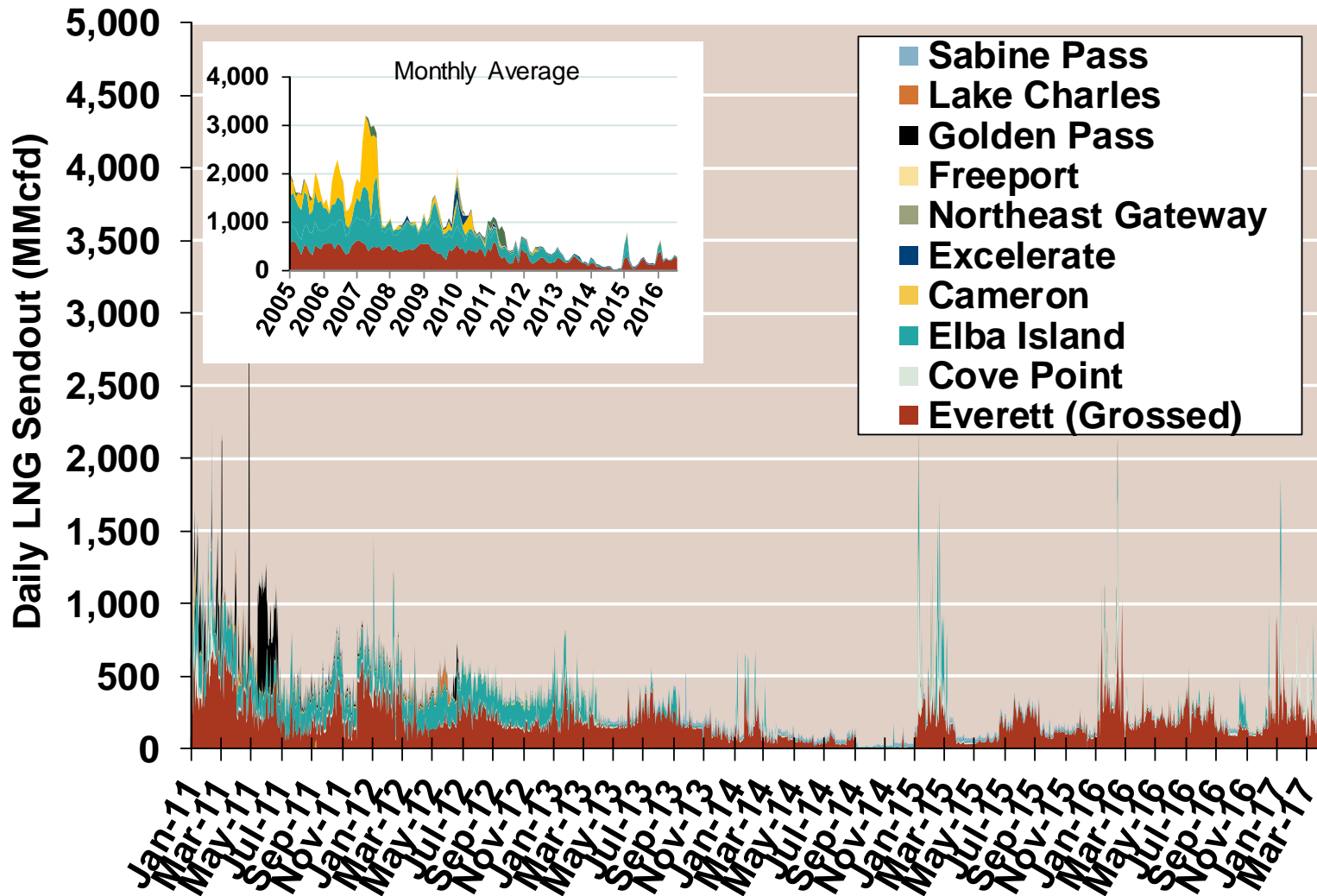
Notes:

Source: Derived from Bloomberg data

Updated

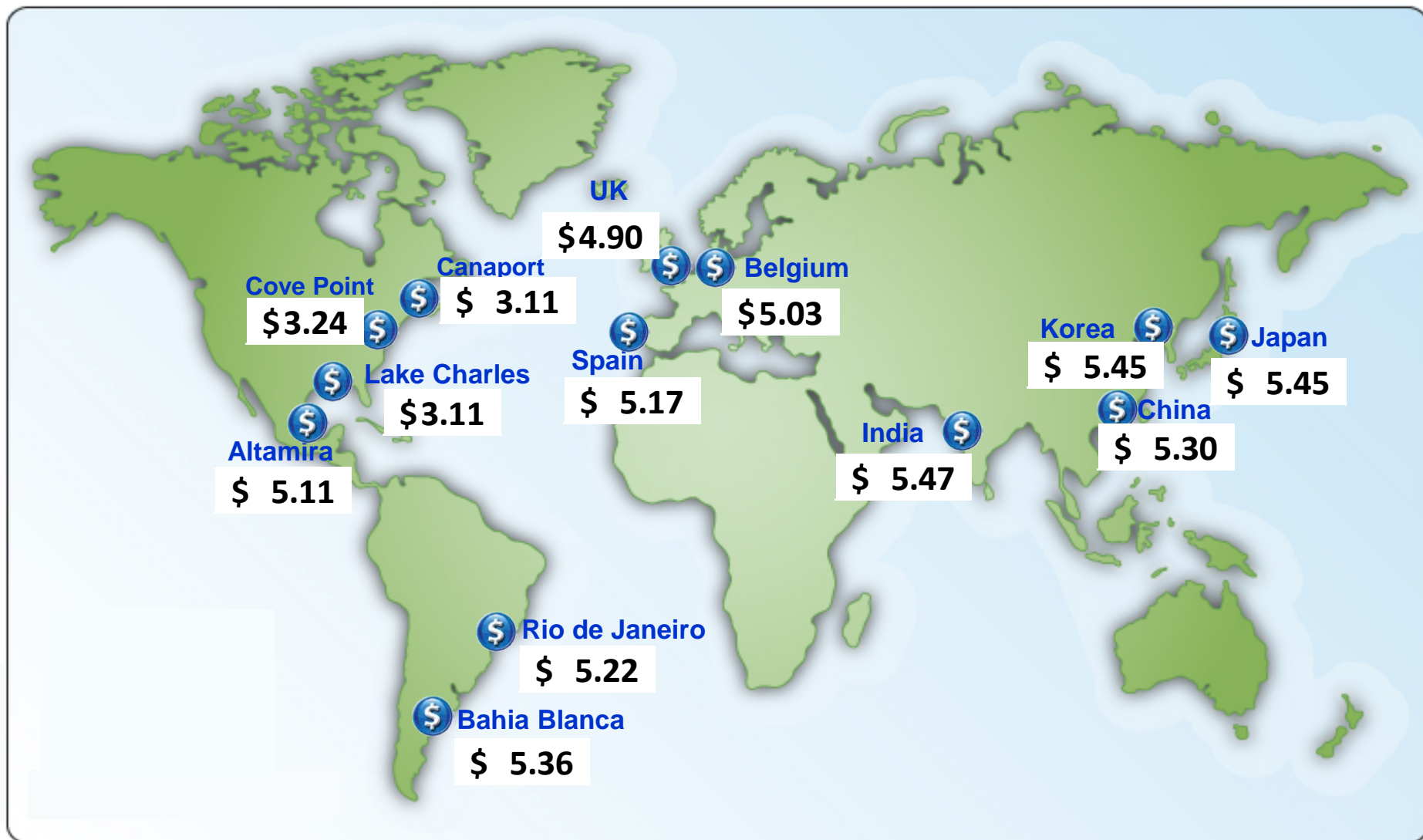
May-17

## Daily Gas Sendout from Existing U.S. LNG Facilities



Notes: Everett data includes flows onto the AGT and TGP interstate lines, plus estimates of flows to the Mystic 7 power plant, Keyspan Boston Gas, and LNG trucked out of the terminal. Excludes flows to the Freeport LNG which flows via intrastate pipelines and flows to the Mystic 8 and 9 power plants.

## World LNG Estimated Landed Prices: Apr-17



Source: *Waterborne Energy, Inc.* Data in \$US/MMBtu. Landed prices are based on a netback calculation.  
 Note: Includes information and Data supplied by IHS Global Inc. and its affiliates ("IHS"); Copyright (publication year) all rights reserved.  
 Prices are the monthly average of the weekly landed prices for the listed month.