



FERC Technical Conference American Wind Energy Association Petition Regarding Generation Interconnection

William H. Whitehead
General Manager-Transmission and Interconnection Planning
PJM Interconnection, LLC

September 24, 2004
Washington, DC

- **Holistic Integrated Regional Planning Process**
 - Integrate all drivers and all solutions
 - Regional / State focus
- **Fully Integrated Planning, Markets, and Operations**
 - Solutions integrated across all three areas
 - Integrated data and visualization capabilities
- **Infrastructure Management as an Integrated System**
 - Well defined cost allocation / cost recovery
 - Risk assessment/mitigation



Regional Transmission Process Drivers

- Regional Reliability Assessments
- Transmission Adequacy Assessment
- Operational/Economic Performance
- Transmission Owner Identified Projects

} Reliability Assessments

- Long Term Firm Transmission Service Requests
- Generation Interconnection Requests
- Load Serving Entity (LSE) Capacity Plans
- Development of Economic Transmission Enhancements
- Merchant Transmission Projects

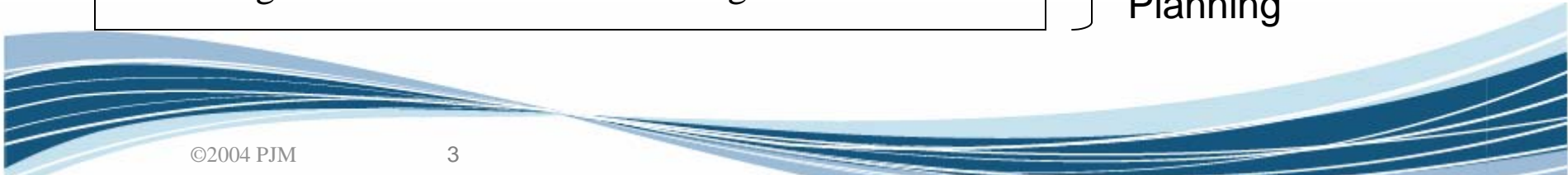
} Market Based Projects

- Transmission Expansion Advisory Committee (TEAC)
- Review with State Commissions

} Public Input

- Inter-regional Coordination Over Large Area

} Inter-Regional Planning



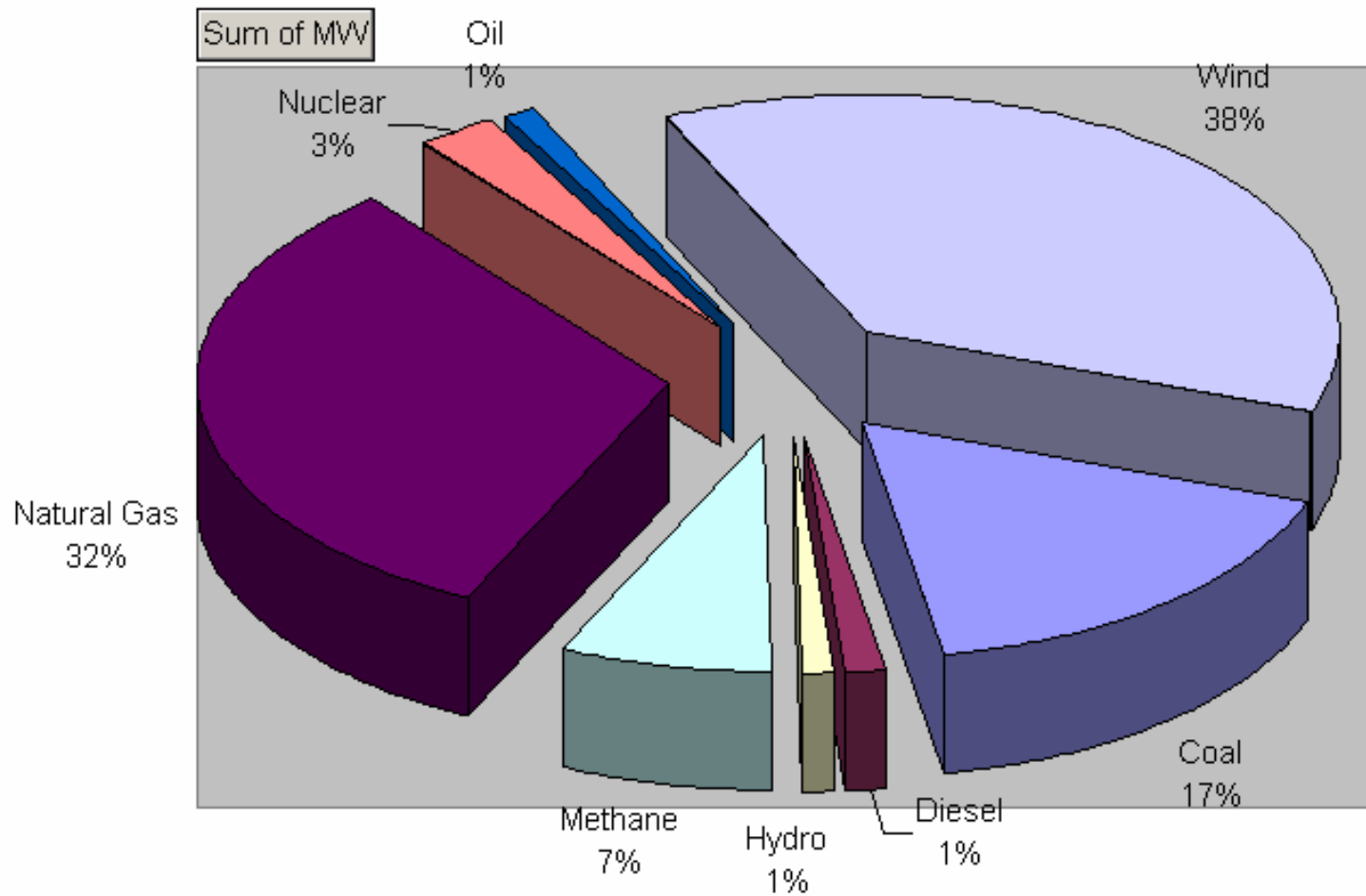


Objectives of the Interconnection Process

- **Comparability Among Developers**
 - All Requests Treated Equally
 - Decisions, In Equivalent Time Period, Result in Comparable Treatment
- **Information Provided On A Timely Basis**
- **Signals to Promote Behavior Consistent With A Reliable Transmission System and Robust Competitive Market**
 - Capacity Adequacy Determination
 - Ability of the Transmission System to Deliver Energy
 - Deliverability of Generation to Load

- **Single Process for All Interconnections**
 - Integrate all potential solutions
 - Maintain rights for all projects
- **Small Generation (< 20 MW) Expedited Within the Process**
 - Recognizes unique attributes of small projects
 - Accommodates legitimate technical differences
 - Expedites without adversely impacting others
- **Process Developed for Distributed Generation (< 2 MW) Based on IEEE 1547**

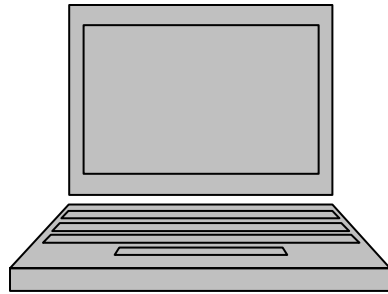
Small Generation MW by Fuel Type



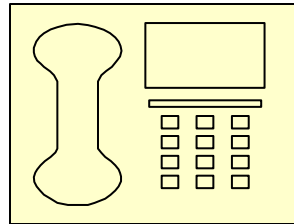
- All potential solutions need to be evaluated through a single process to maintain equity between projects.
- Legitimate technical differences can be accommodated within the process.
- Unique attributes of small projects can be recognized within the process.



Questions?



whitew@pjm.com



610-666-4561