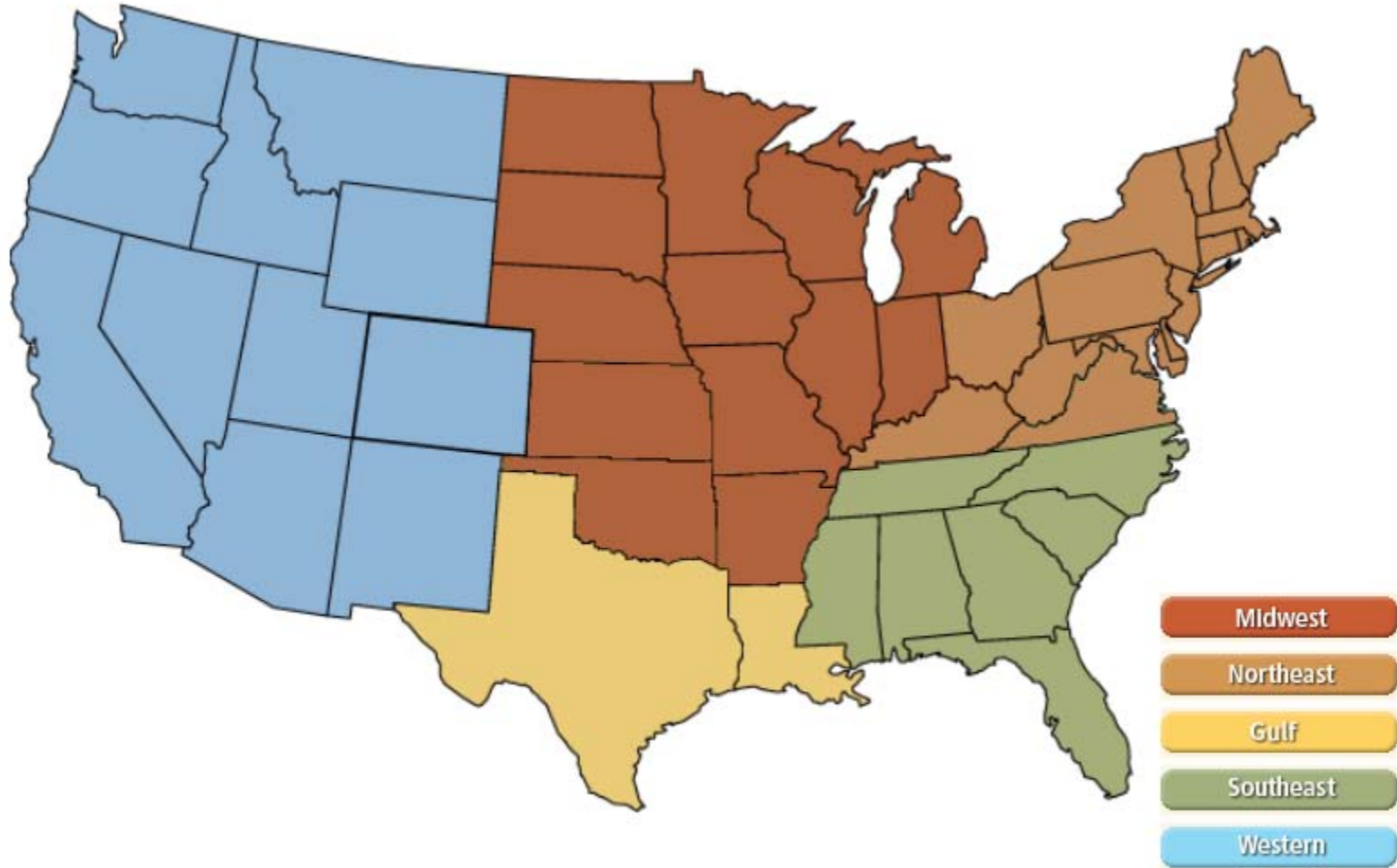
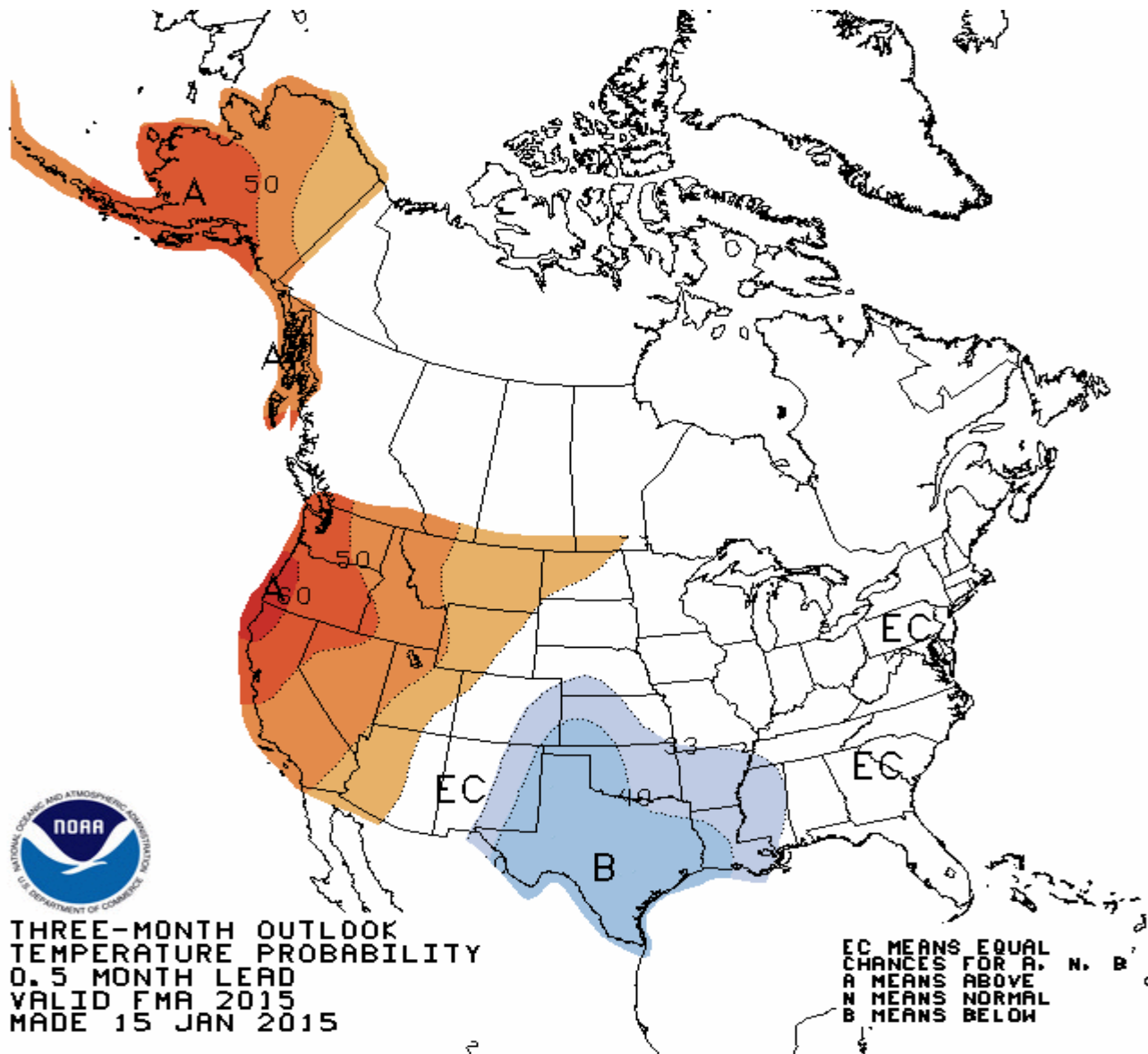


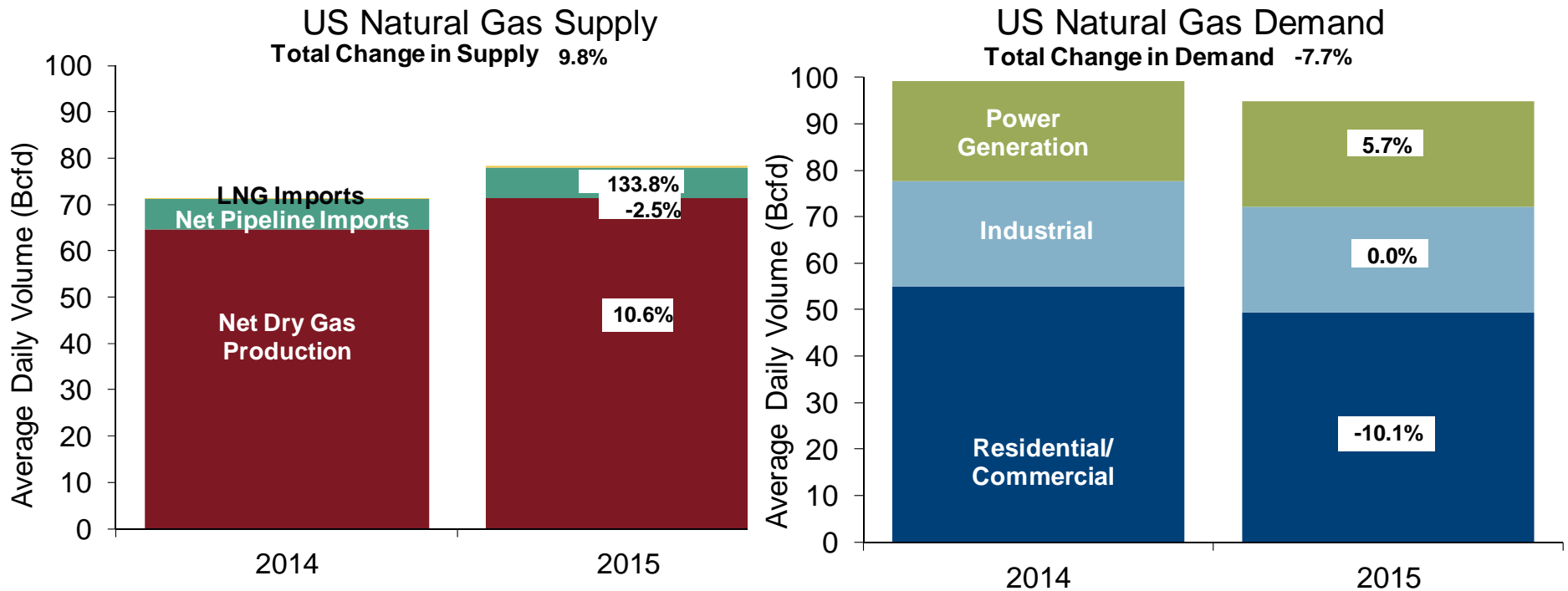
National



NOAA 3 Month Outlook



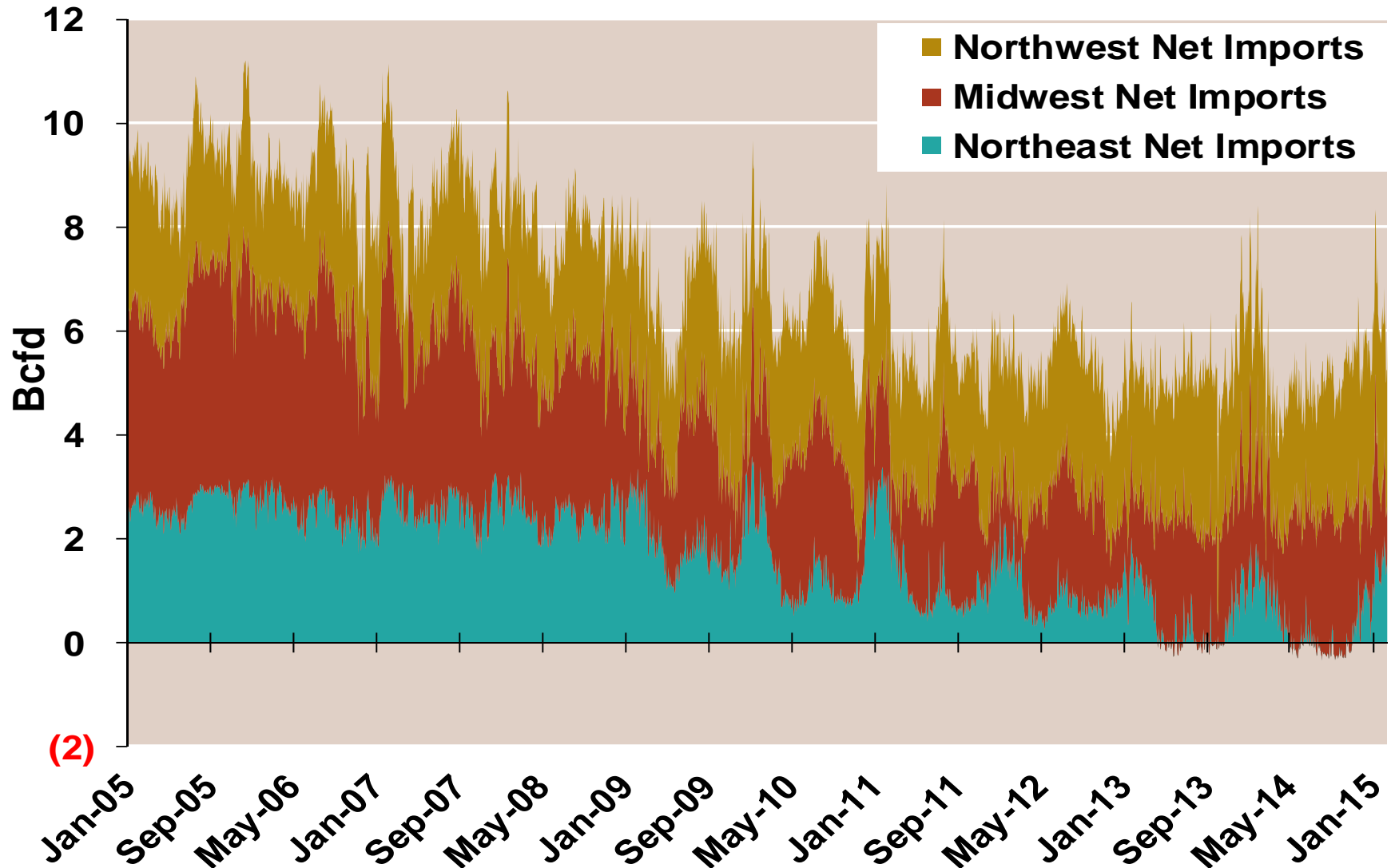
U.S. NG Supply and Demand Year to date Jan 2014 vs. Jan 2015



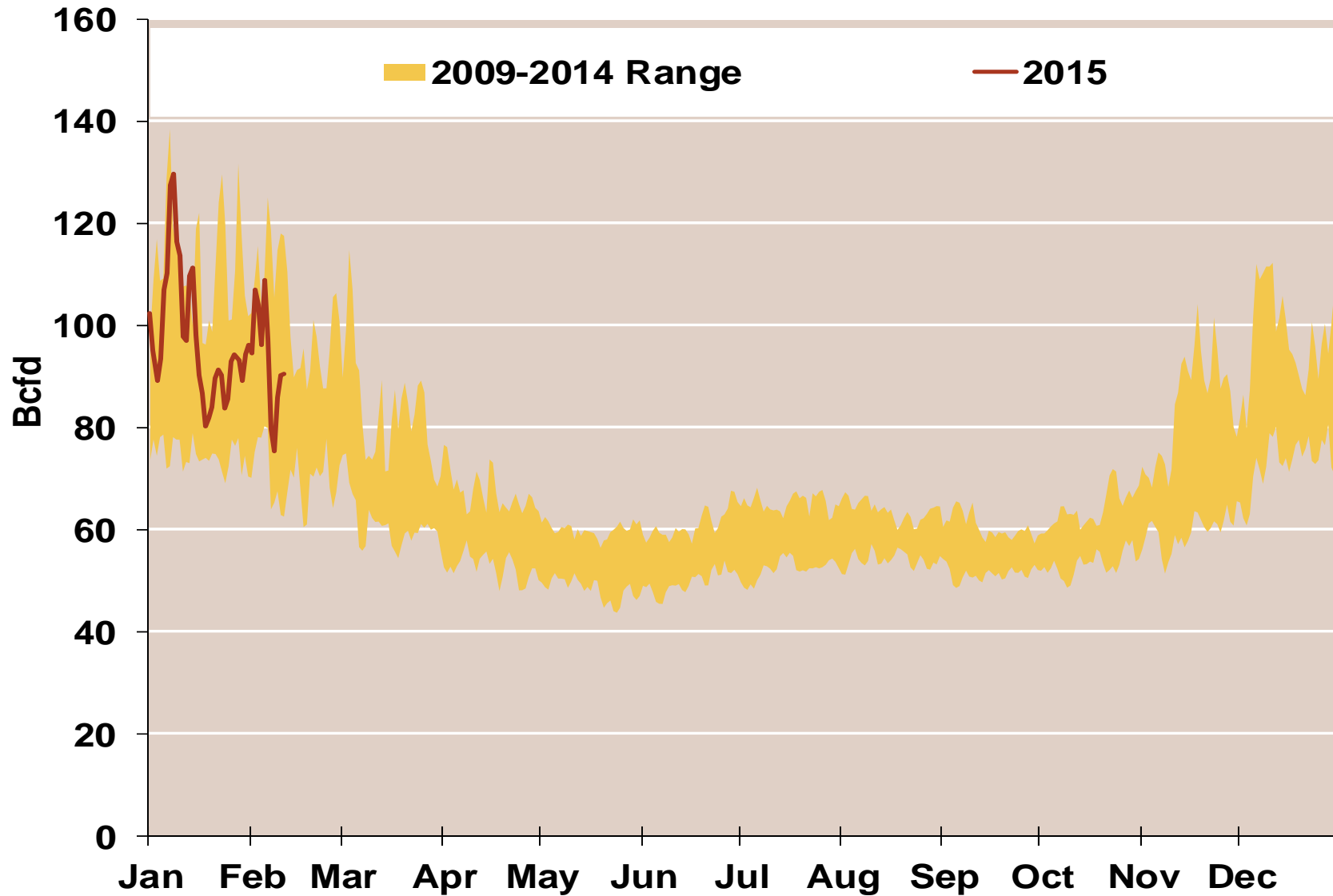
Note: Balance includes all amounts not attributable to other categories.

Source: Derived from *Bentek Energy* data

Regional Canadian Imports



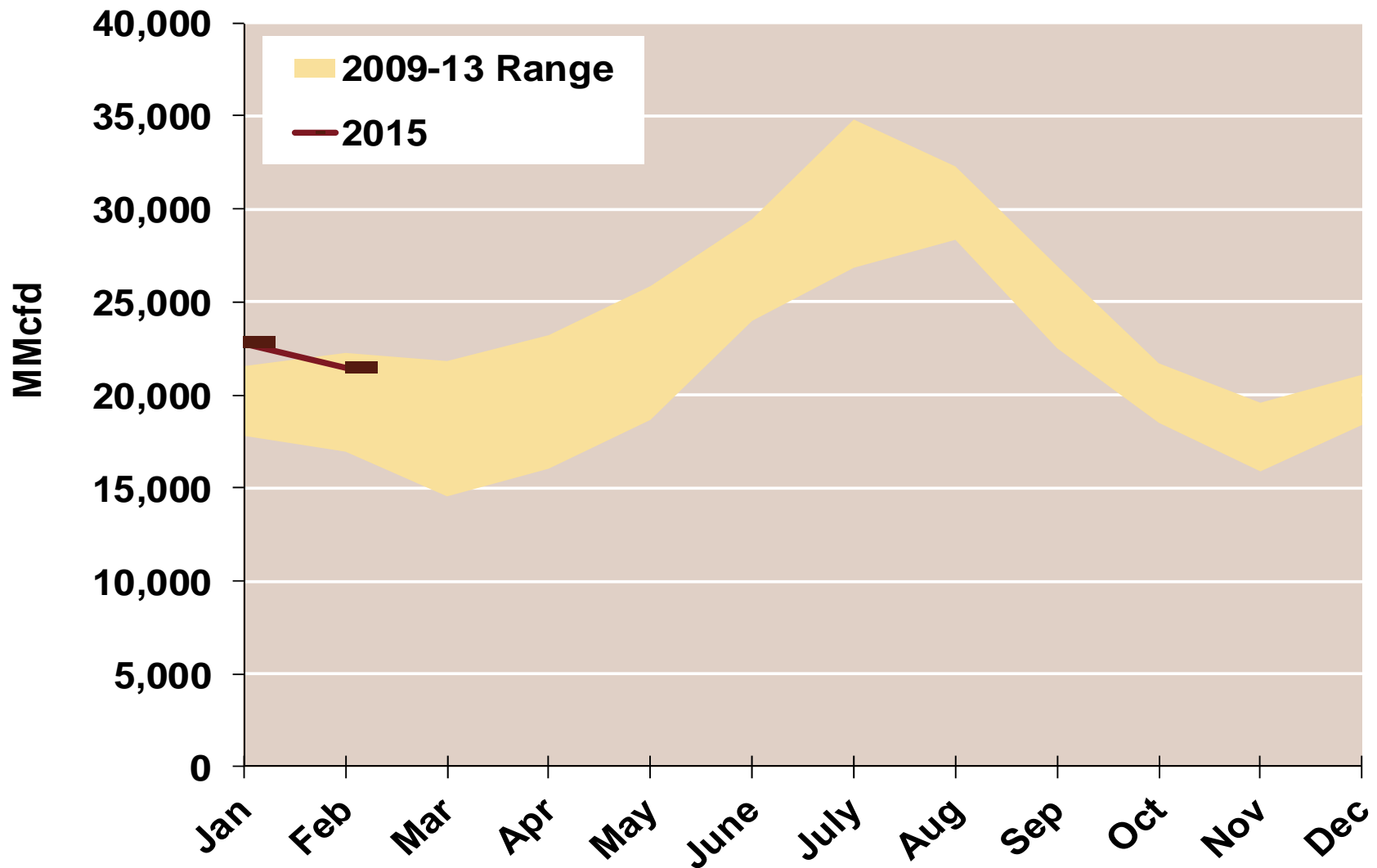
Total U.S. Natural Gas Demand All Sectors



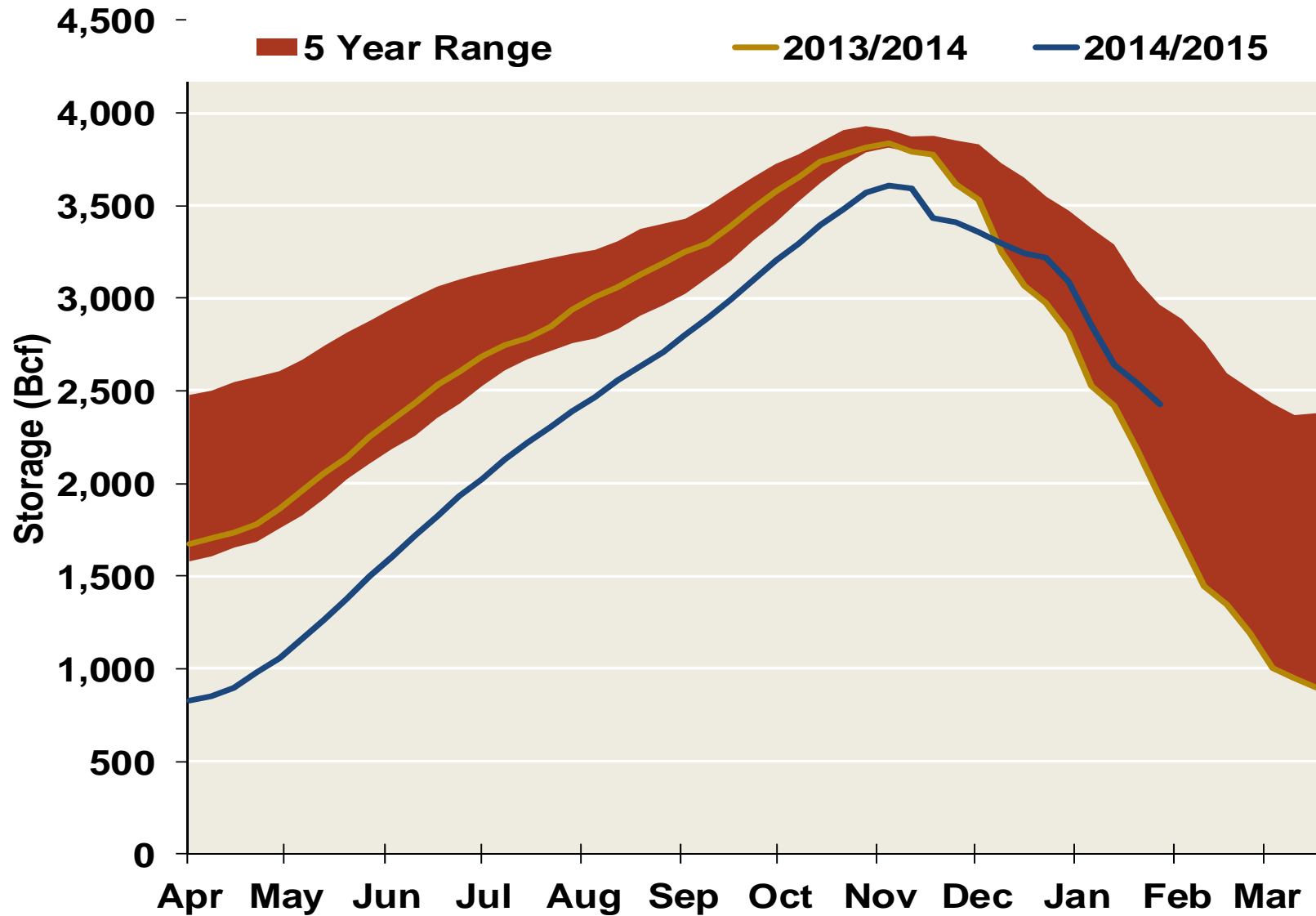
Source: Derived from *Bentek Energy* data, derived from interstate pipeline flow and modeled data.

Updated: January 2015

U.S. Natural Gas Consumption for Power Generation



EIA Storage Inventories

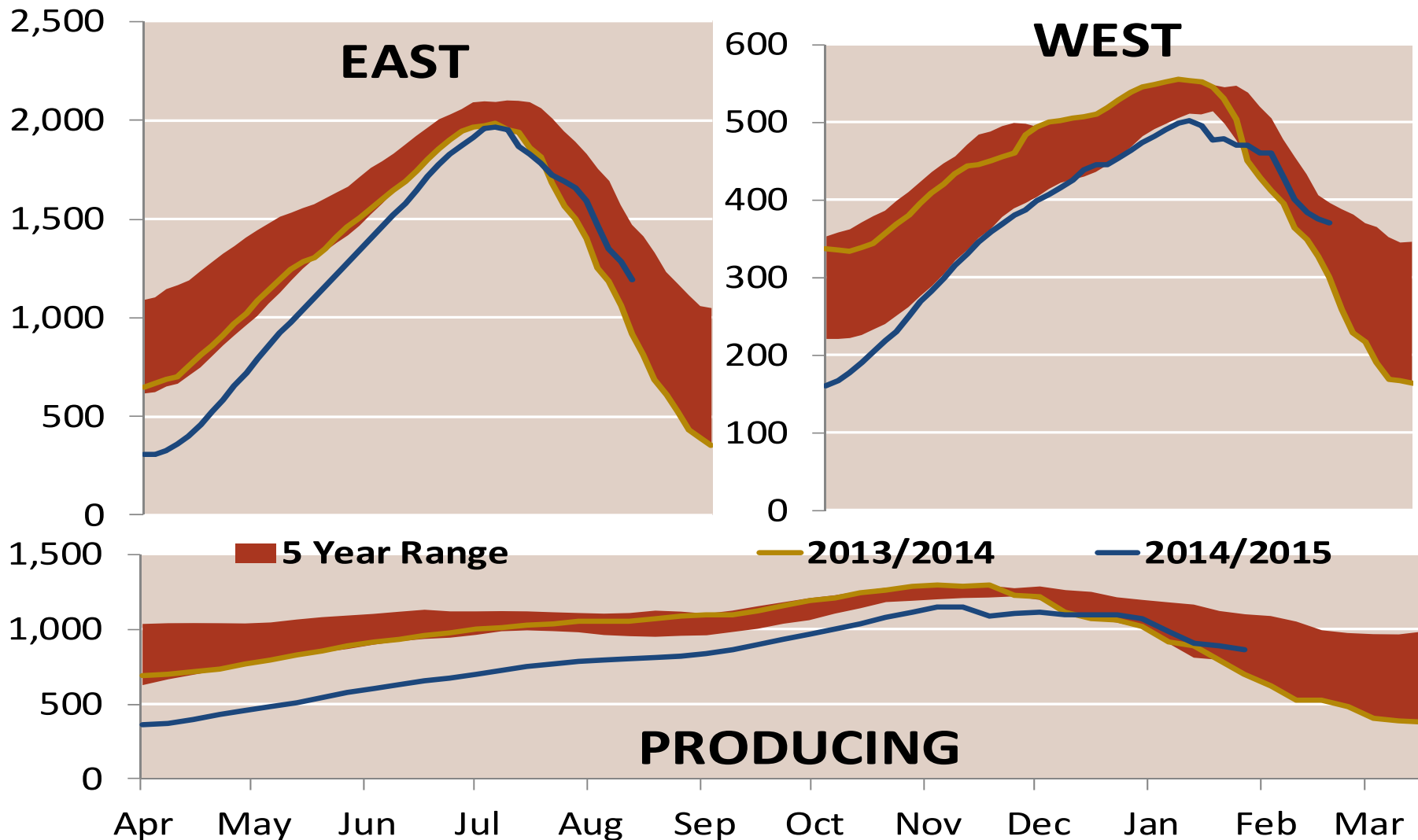


Notes:

Source: Derived from Bloomberg Data

Updated 2/12/2015

EIA Storage Inventories

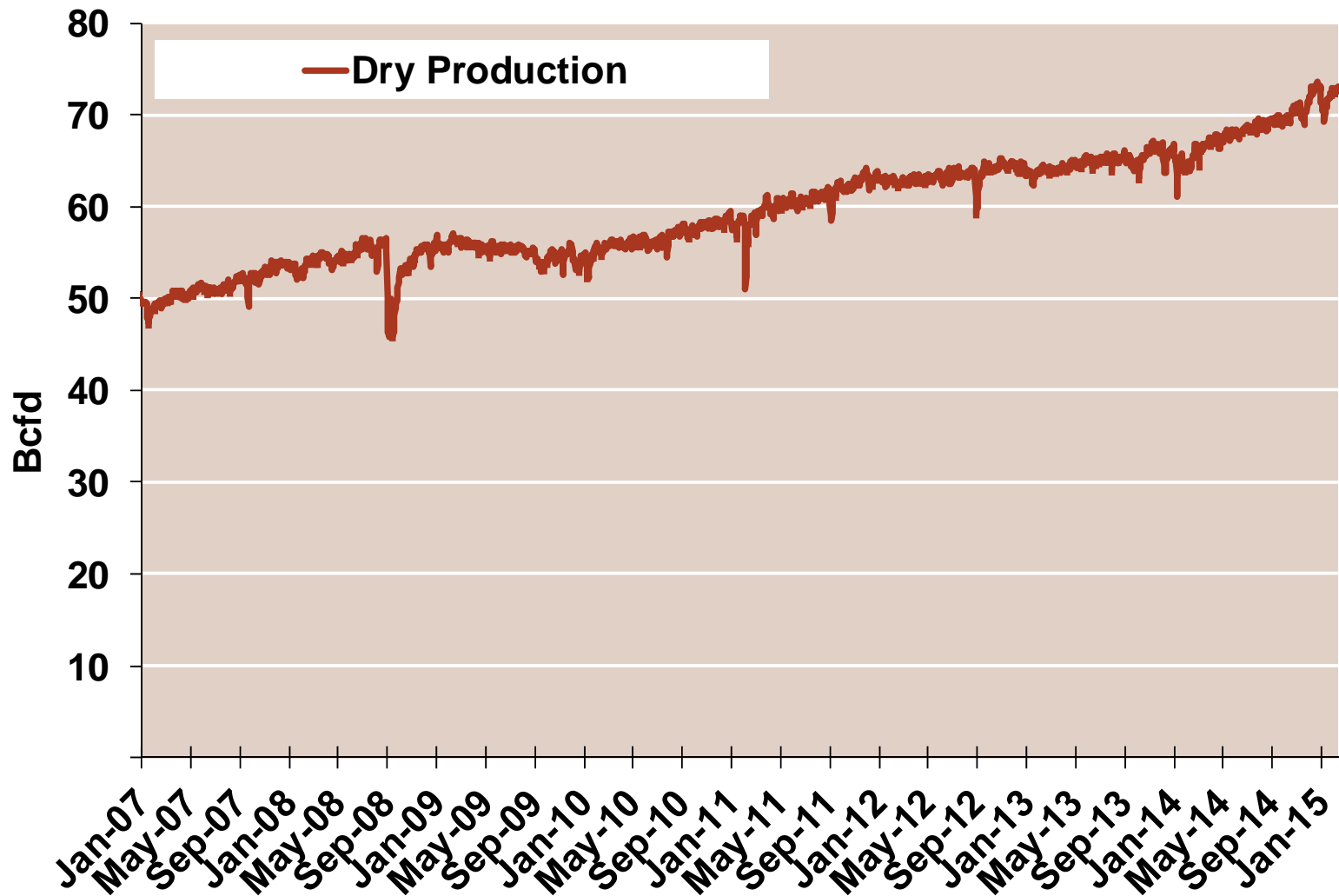


Notes:

Source: Derived from Bloomberg Data

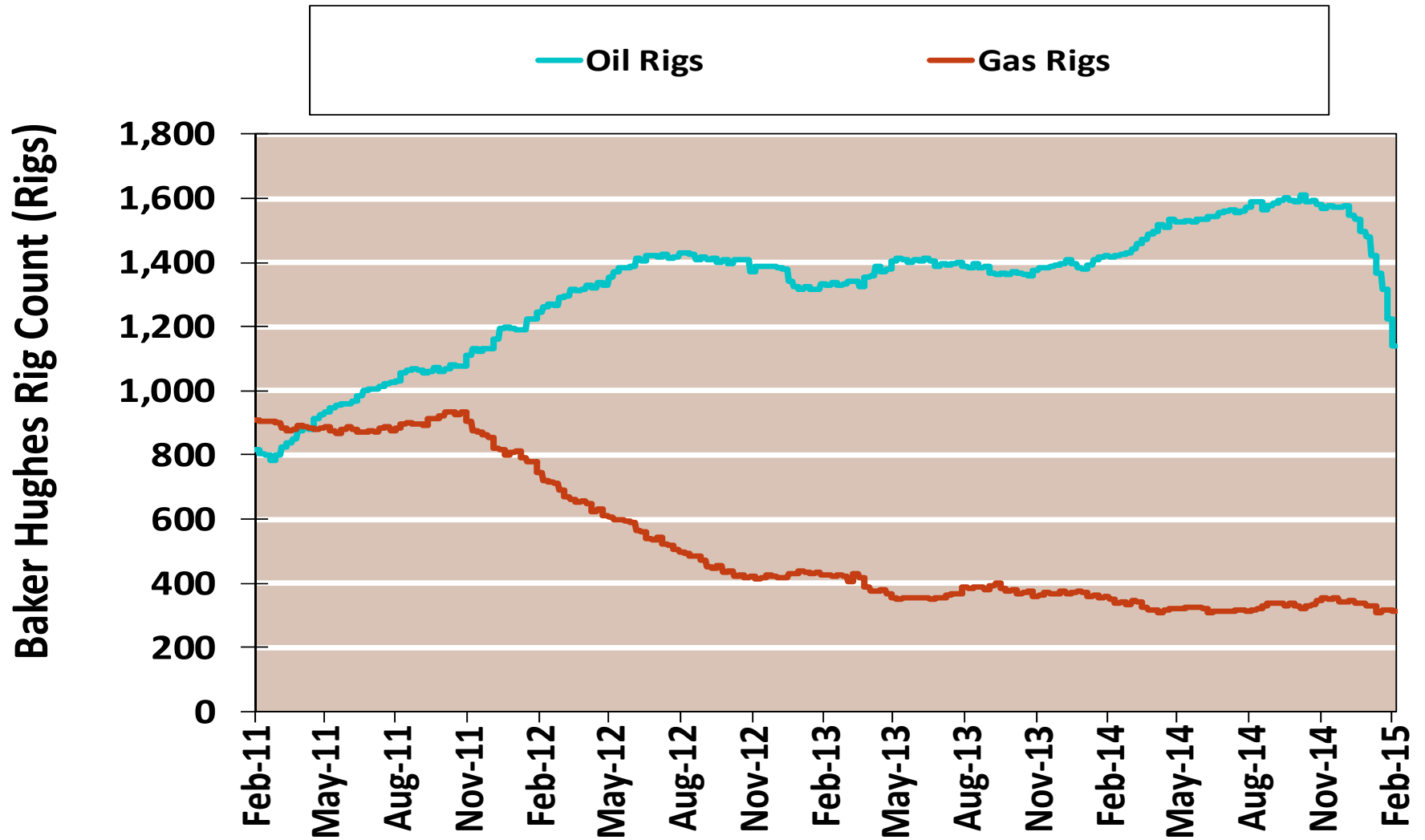
Updated 2/12/2015

Monthly U.S. Dry Gas Production – Lower 48 States



Note: Prior to July 2010, chart was derived from a combination of EIA and Bentek Energy data
Source: Derived from Bentek Energy data

NG Rigs by Fuel Type



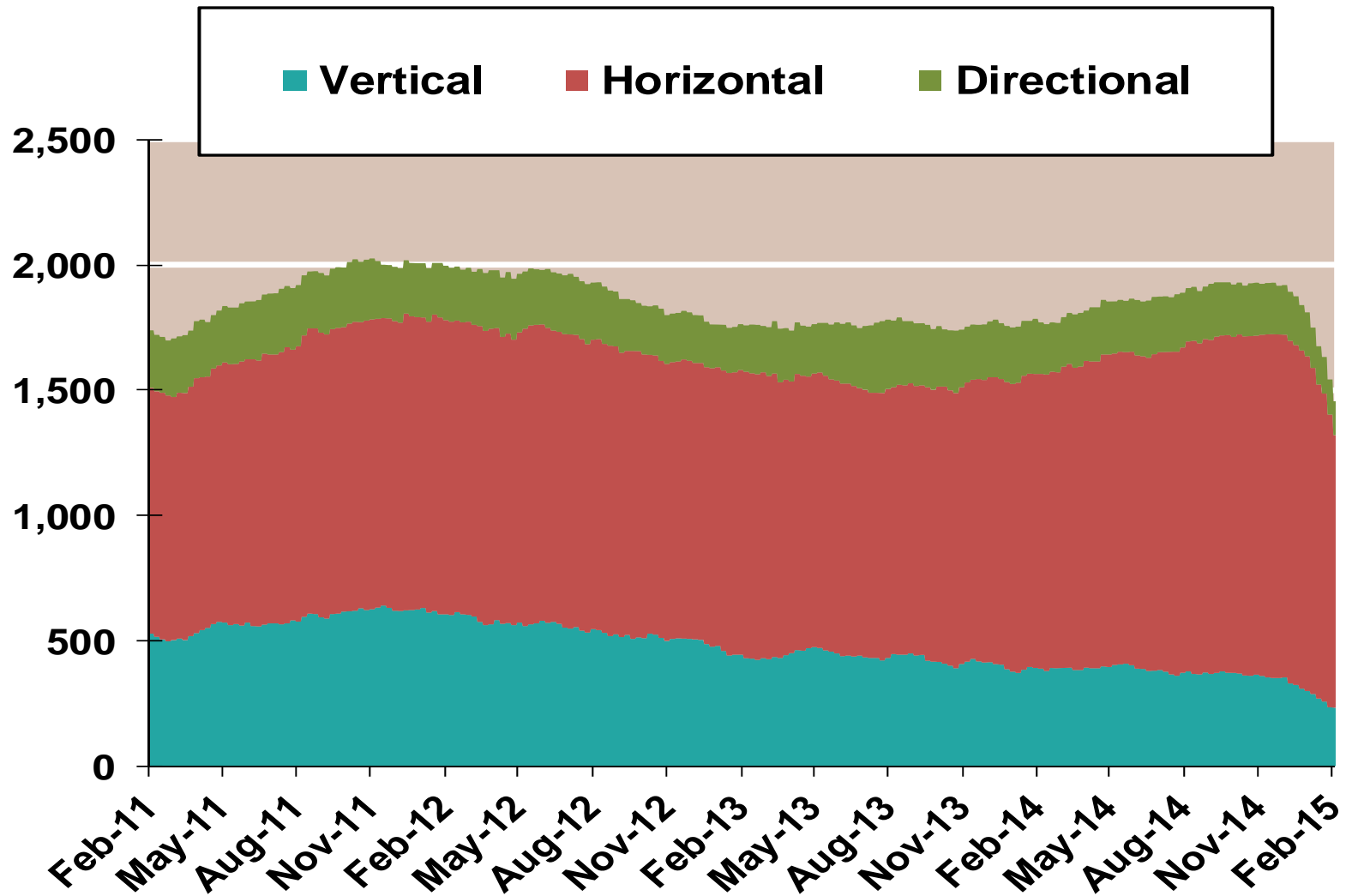
Notes:

Source: Derived from Bloomberg data

Updated 2/12/2015

NG Rig by Direction

Baker Hughes Rigs By Drill Type

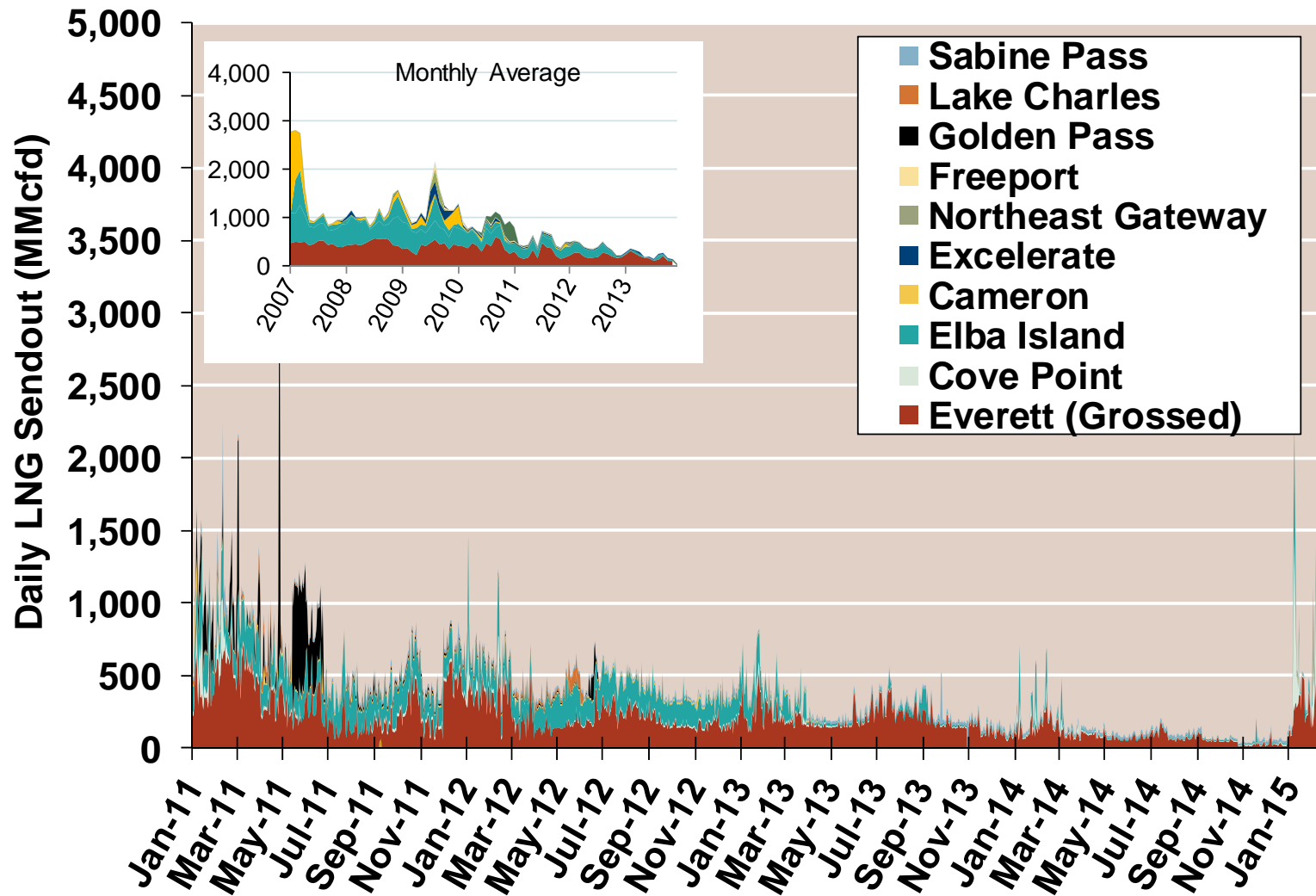


Notes:

Source: Derived from Bloomberg data

Updated 2/12/2015

Daily Gas Sendout from Existing U.S. LNG Facilities



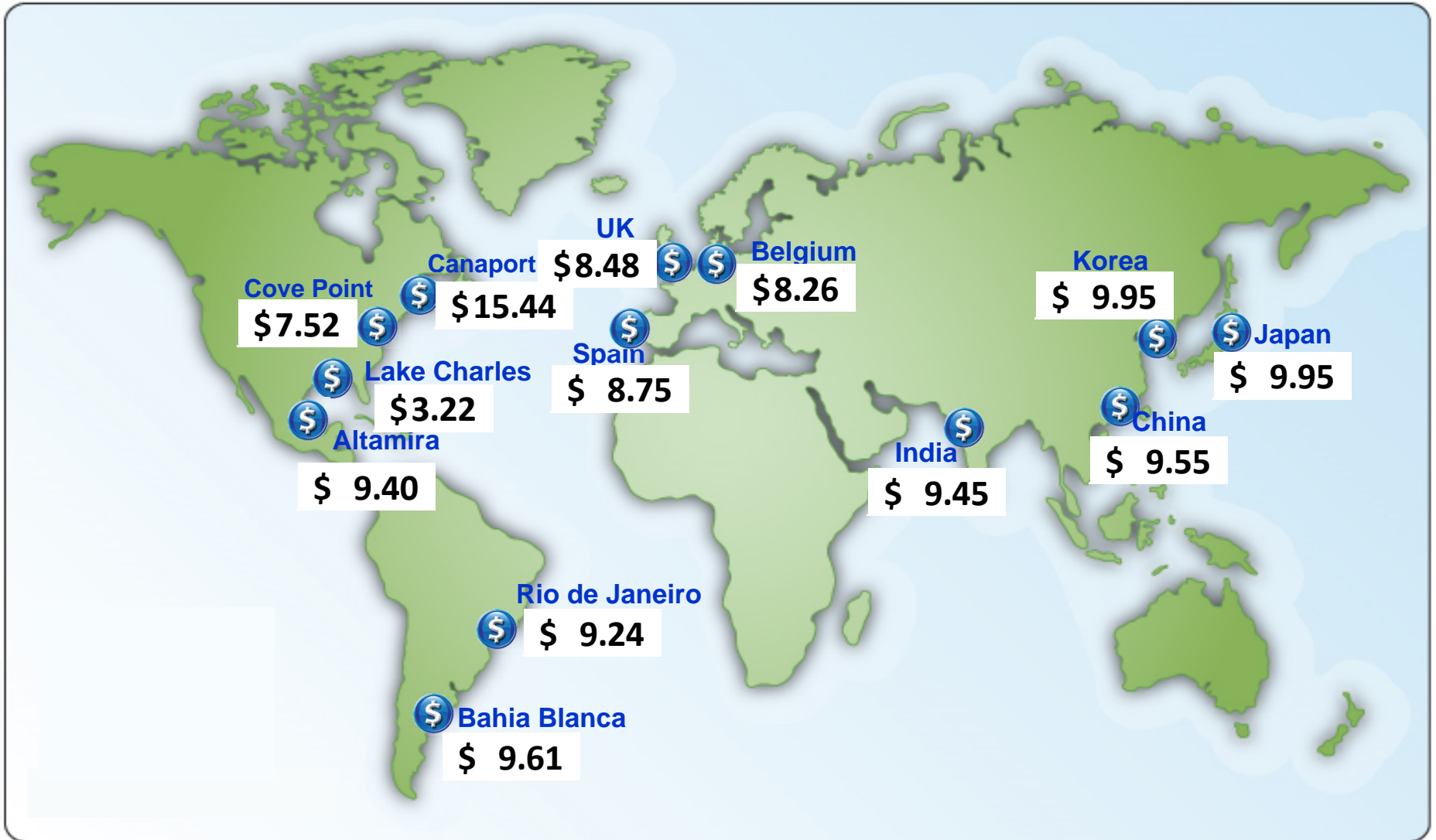
Notes: Everett data includes flows onto the AGT and TGP interstate lines, plus estimates of flows to the Mystic 7 power plant, Keyspan Boston Gas, and LNG trucked out of the terminal. Excludes flows to the Freeport LNG which flows via intrastate pipelines and flows to the Mystic 8 and 9 power plants.

Source: Derived from *Bentek Energy* data

Updated: January 2015

1

World LNG Estimated Landed Prices: Dec-14



Source: Waterborne Energy, Inc. Data in \$US/MMBtu

Note: Includes information and Data supplied by IHS Global Inc. and its affiliates ("IHS"); Copyright (publication year) all rights reserved. Landed prices are the monthly average of weekly trades from the prior month.

Updated Apr-2016