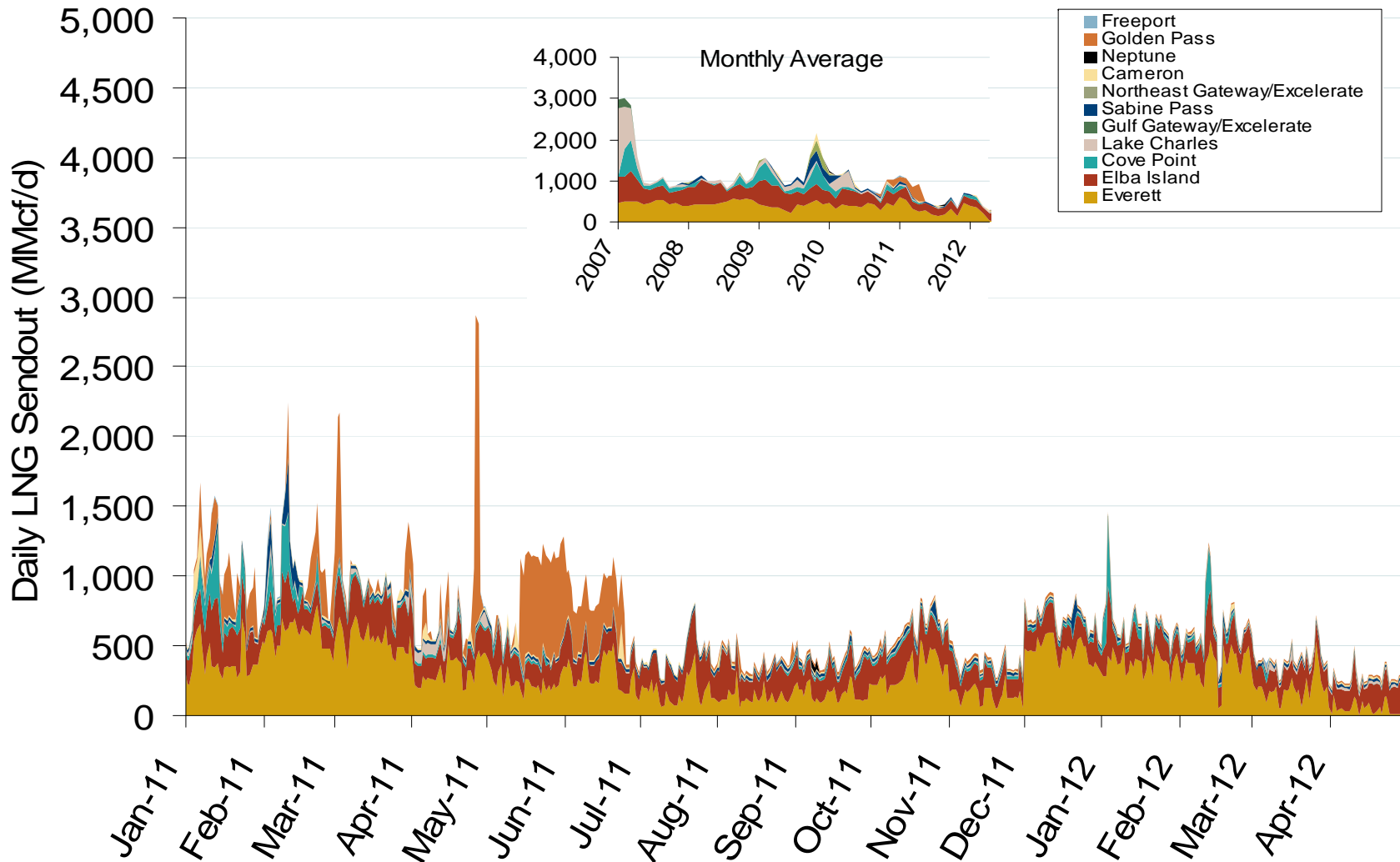


## Daily Gas Sendout from Existing LNG Facilities



Notes: Everett data includes flows onto the AGT and TGP interstate lines, plus estimates of flows to the Mystic 7 power plant, Keyspan Boston Gas, and LNG trucked out of the terminal. Excludes Freeport LNG which flows via intrastate pipelines

Source: Derived from Bentek data

Updated: May 14, 2012