

# **OE ENERGY MARKET SNAPSHOT**

## **East Version – October 2016 Data**

---

Office of Enforcement  
Federal Energy Regulatory Commission  
November 2016

# Natural Gas and Fuels Markets

East

## Northeast Day-Ahead Prices Averaged Annually/ Seasonally

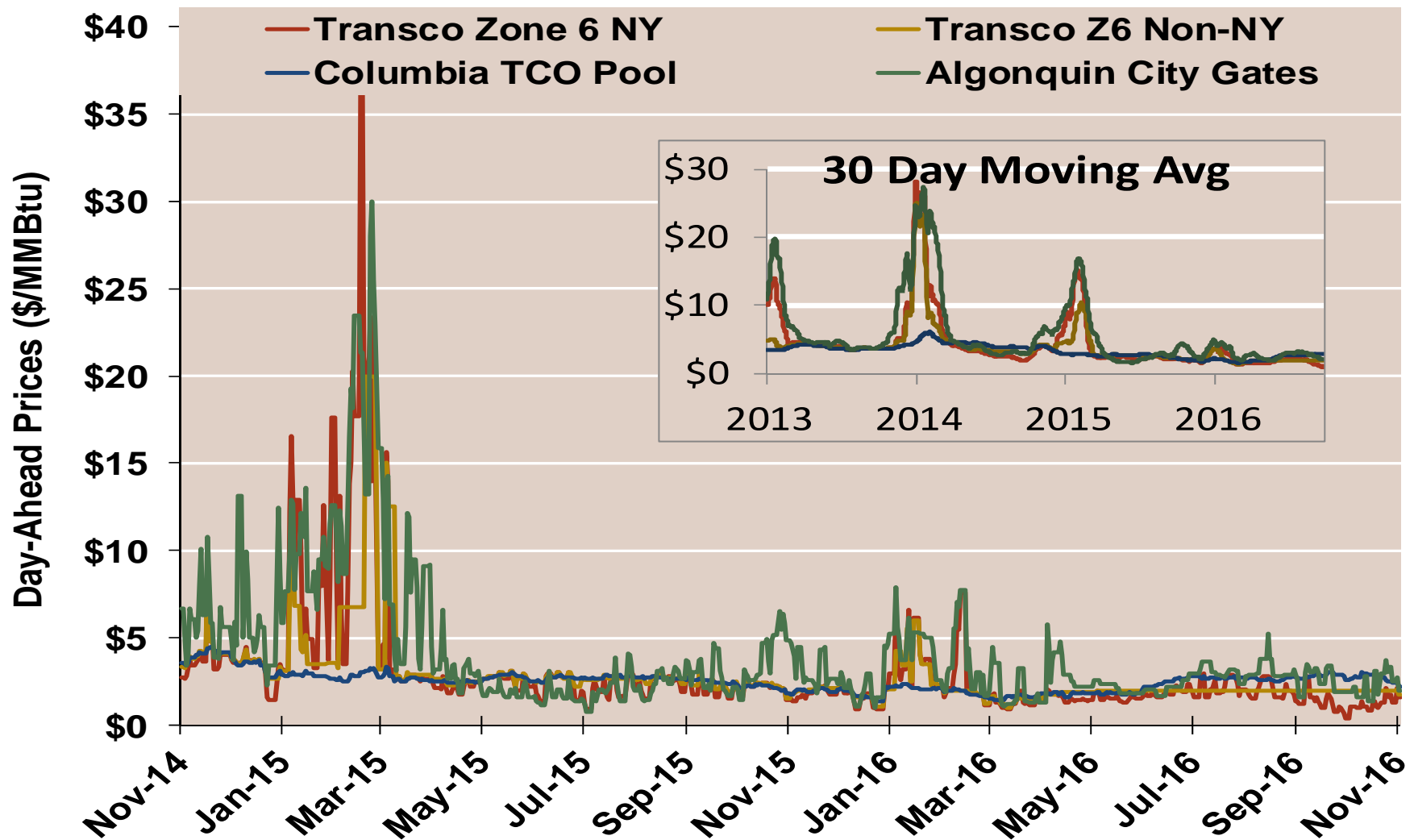
	Average Day Ahead Prices (\$/MMBtu)	Algonquin Citygates	Transco Zone 6 NY	Transco Zone 6 Non-NY	Columbia Appalachia	Henry Hub
2013	Annual	6.95	5.11	4.03	3.72	3.72
	Summer	4.24	3.92	3.84	3.77	3.76
	Winter 2013/2014	15.76	11.40	9.66	4.60	4.61
2014	Annual	7.95	6.22	5.98	4.30	4.32
	Summer	3.50	2.89	3.53	4.14	4.18
	Winter 2014/2015	9.17	6.68	5.25	3.15	3.21
2015	Annual	4.71	3.77	3.33	2.51	2.60
	Summer	2.51	2.25	2.53	2.58	2.67
	Winter 2015/2016	3.18	2.26	2.11	1.86	1.97
2016 YTD	Annual	2.85	1.95	2.03	2.26	2.38
	Summer	2.60	1.66	1.93	2.43	2.55
	Winter 2016/2017	1.95	1.60	1.72	2.19	2.53

Notes:

Source: Derived from ICE data

Updated Nov-2016

## Northeast Day-Ahead Prices

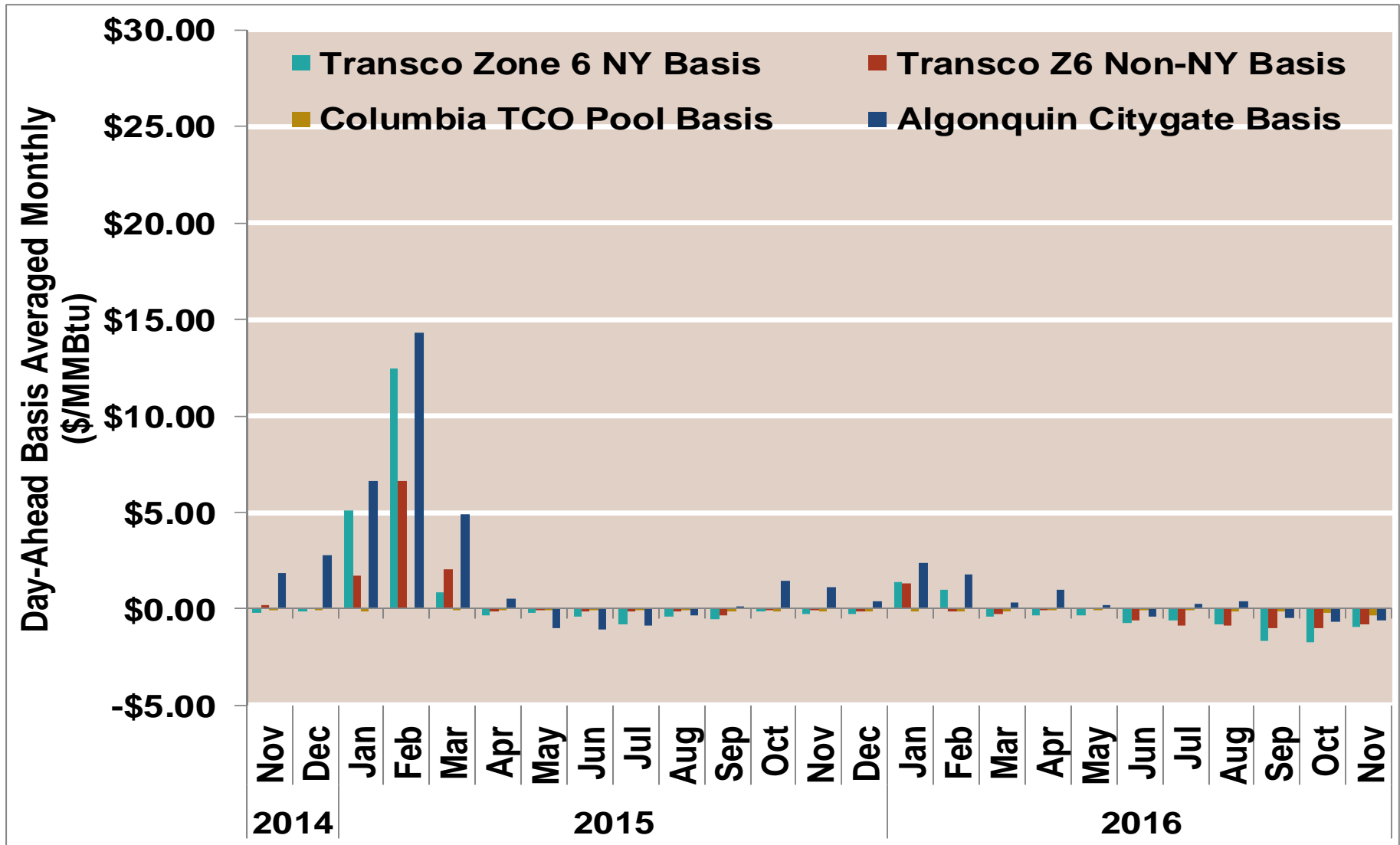


Notes:

Source: Derived from ICE data

Updated Nov-2016

## Northeast Monthly Average Basis Value To Henry Hub

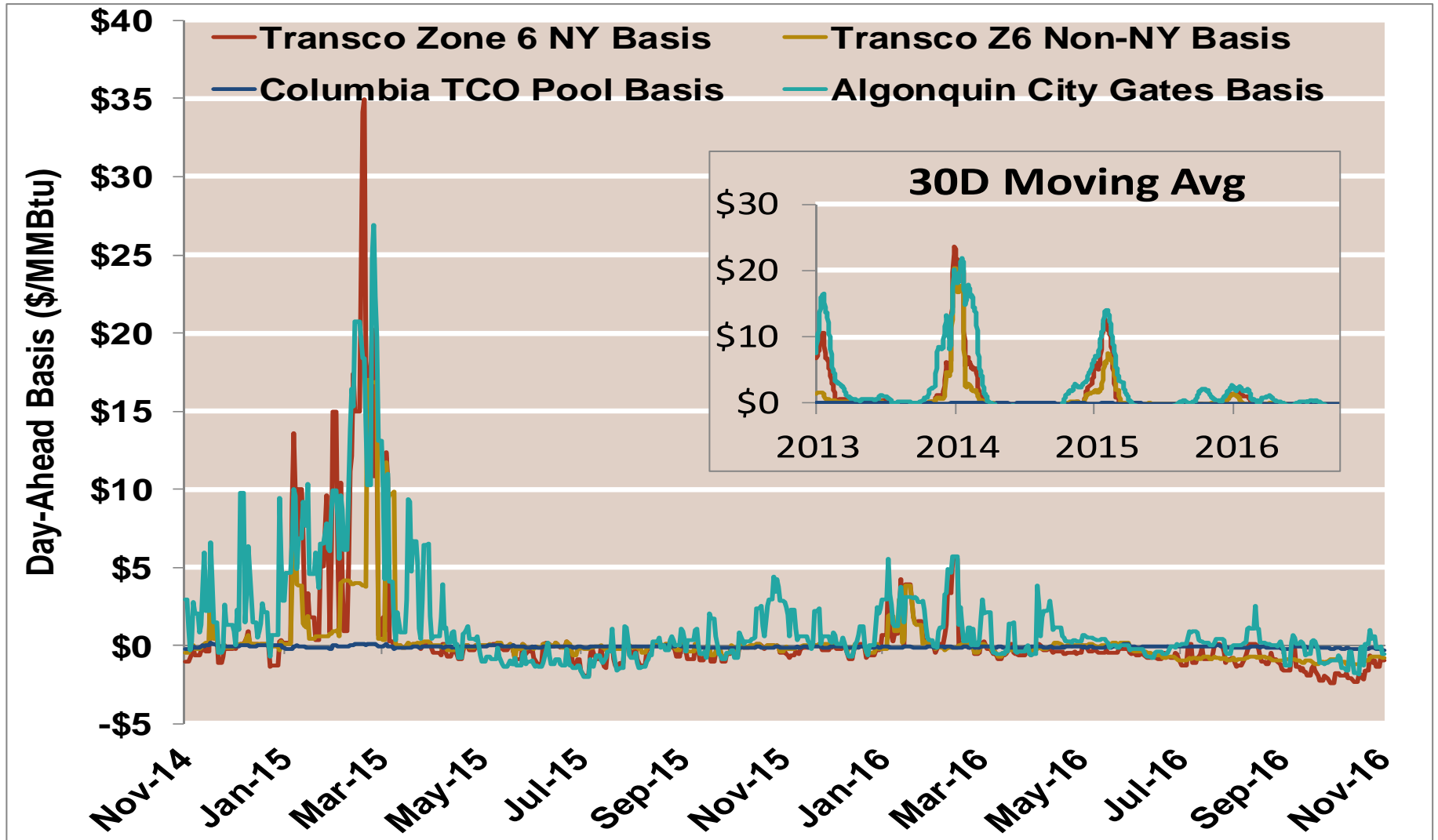


Notes:

Source: Derived from ICE data

Updated Nov-2016

## Northeast Day-Ahead Basis

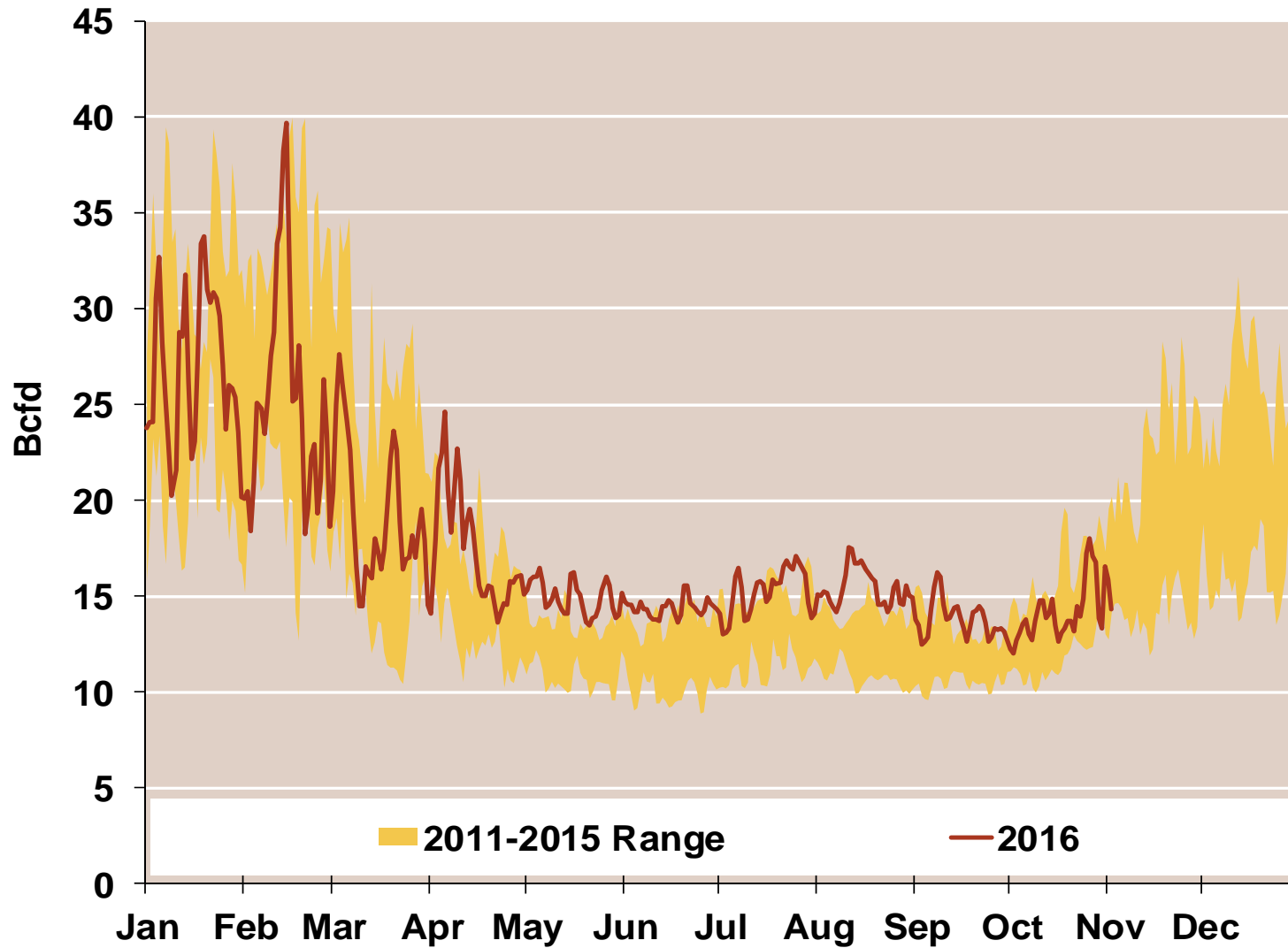


Notes:

Source: Derived from ICE data

Updated Nov-2016

### Daily Northeast Natural Gas Demand All Sectors

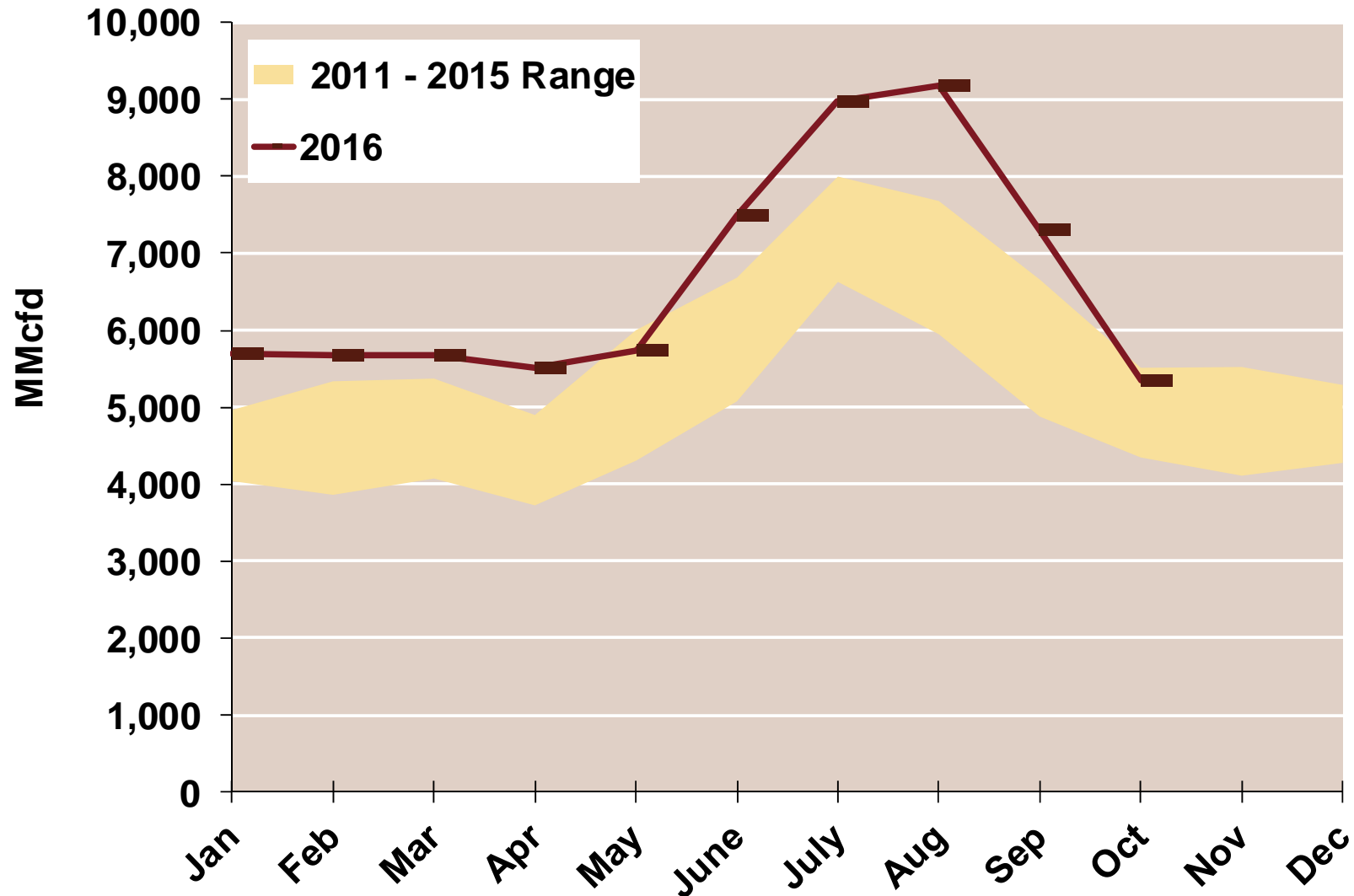


Source: Derived from *Bentek Energy* data

Note: Northeast is defined as Maine, New Hampshire, Vermont, Massachusetts, Rhode Island, Connecticut, New York, New Jersey, Pennsylvania, Delaware, Maryland, Virginia, West Virginia, Ohio and Kentucky

Updated: Oct 2015

## Northeast Natural Gas Consumption for Power Generation



Source: Derived from *Bentek Energy* data

Note: Northeast is defined as Maine, New Hampshire, Vermont, Massachusetts, Rhode Island, Connecticut, New York, New Jersey, Pennsylvania, Delaware, Maryland, Virginia, West Virginia, Ohio and Kentucky

Updated: Oct 2015



## Southeast Day-Ahead Prices Averaged Annually/Seasonally

	Average Day Ahead Prices (\$/MMBtu)	FGT Z3	Tetco-M1	Transco St 65	Transco Zone 5	Henry Hub
2013	Annual	3.77	3.66	3.71	4.07	<b>3.72</b>
	Summer	3.83	3.68	3.74	3.95	<b>3.76</b>
	Winter 2013/2014	4.62	4.61	4.60	12.42	<b>4.61</b>
2014	Annual	4.34	4.28	4.30	7.50	<b>4.32</b>
	Summer	4.21	4.12	4.16	4.17	<b>4.18</b>
	Winter 2014/2015	3.21	3.14	3.19	5.40	<b>3.21</b>
2015	Annual	2.62	2.53	2.58	3.53	<b>2.60</b>
	Summer	2.69	2.58	2.65	2.72	<b>2.67</b>
	Winter 2015/2016	1.99	1.91	1.95	2.28	<b>1.97</b>
2016 YTD	Annual	2.38	2.30	2.33	2.09	<b>2.38</b>
	Summer	2.54	2.47	2.50	1.96	<b>2.55</b>
	Winter 2016/2017	2.42	2.29	2.38	1.97	<b>2.53</b>

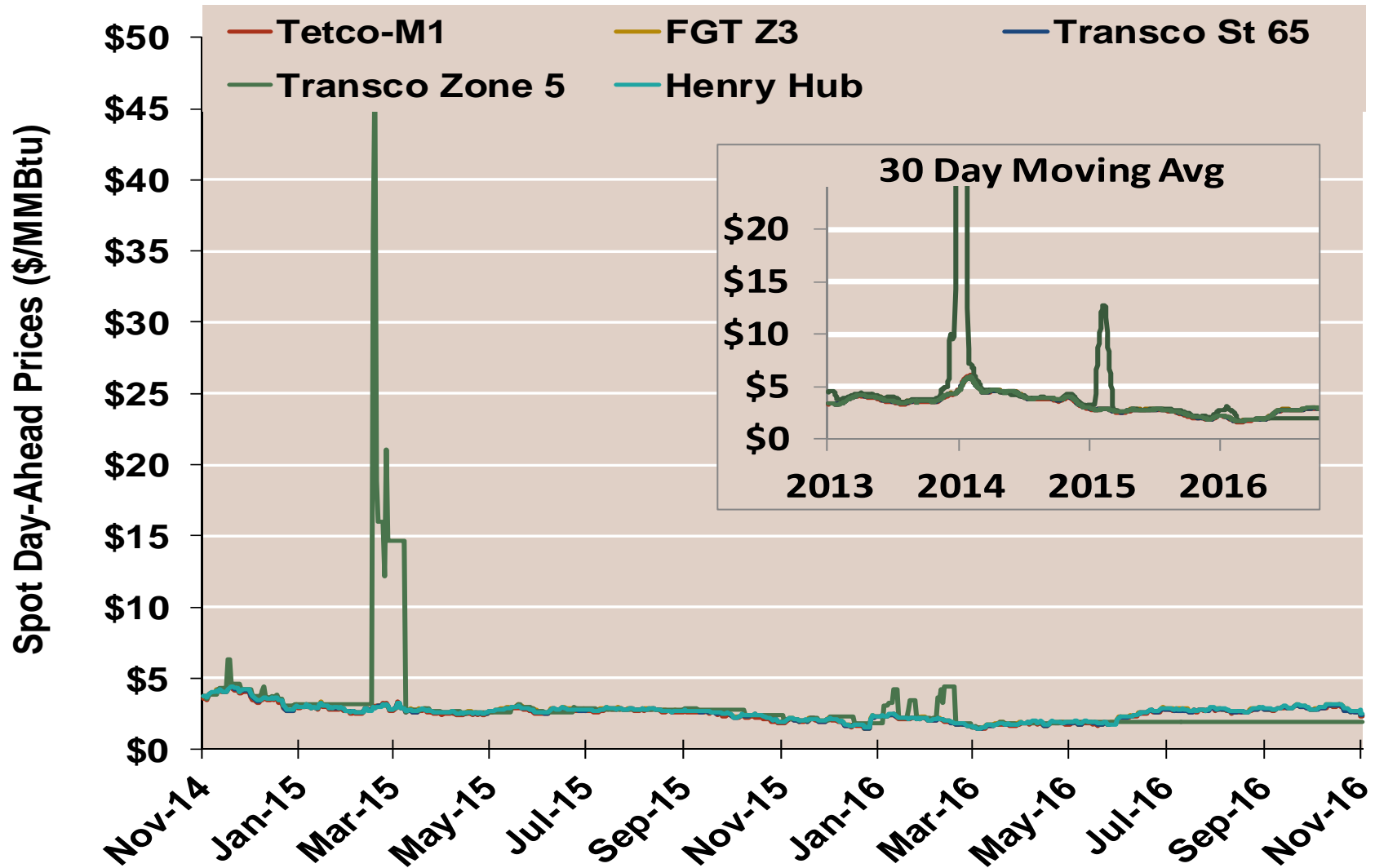
Notes:

Source: Derived from ICE data

Updated Nov-2016

2040

### Southeast Day-Ahead Prices

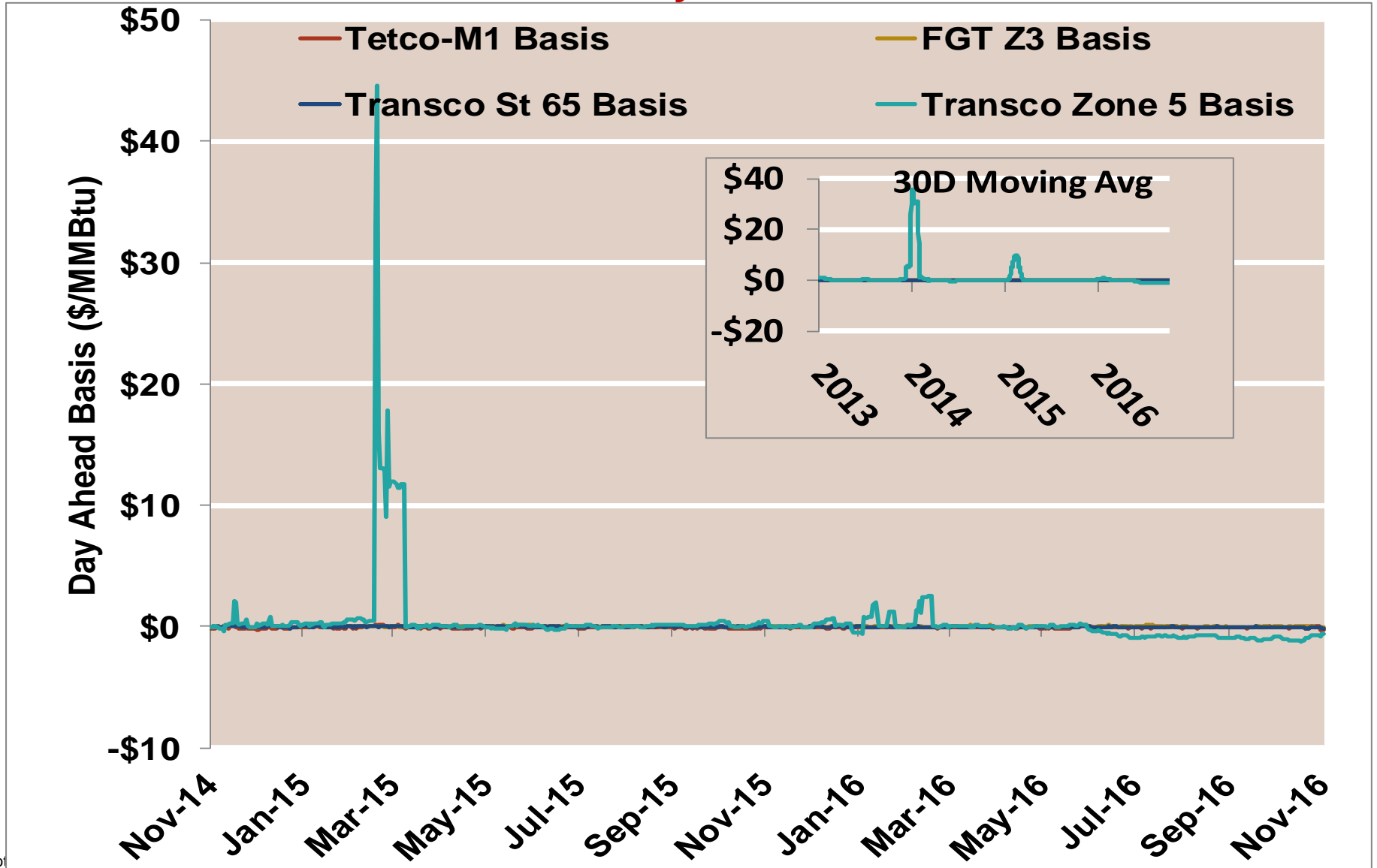


Notes:

Source: Derived from ICE data

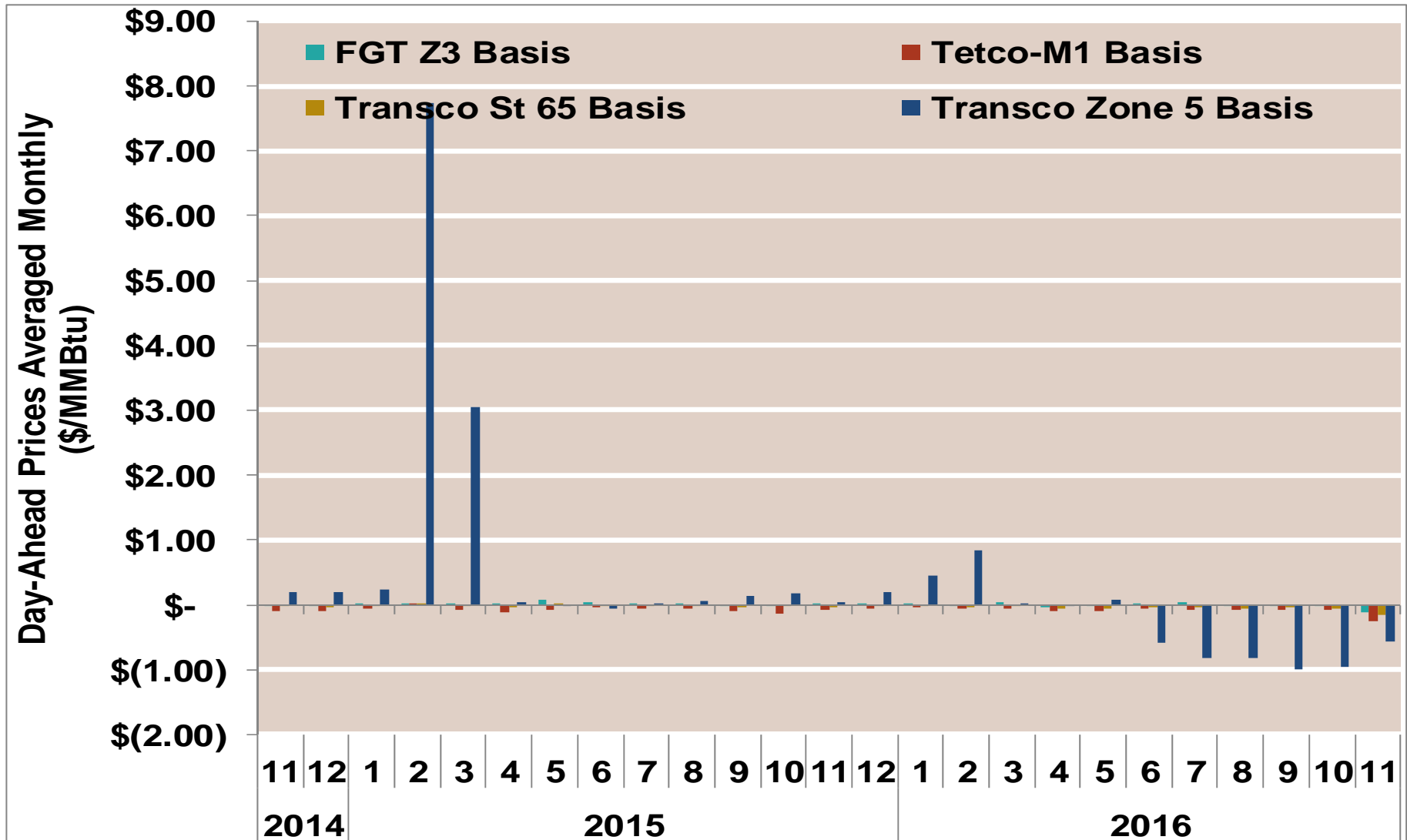
Updated Nov-2016

### Southeast Day-Ahead Basis



Note

## Southeast Monthly Average Basis Value To Henry Hub

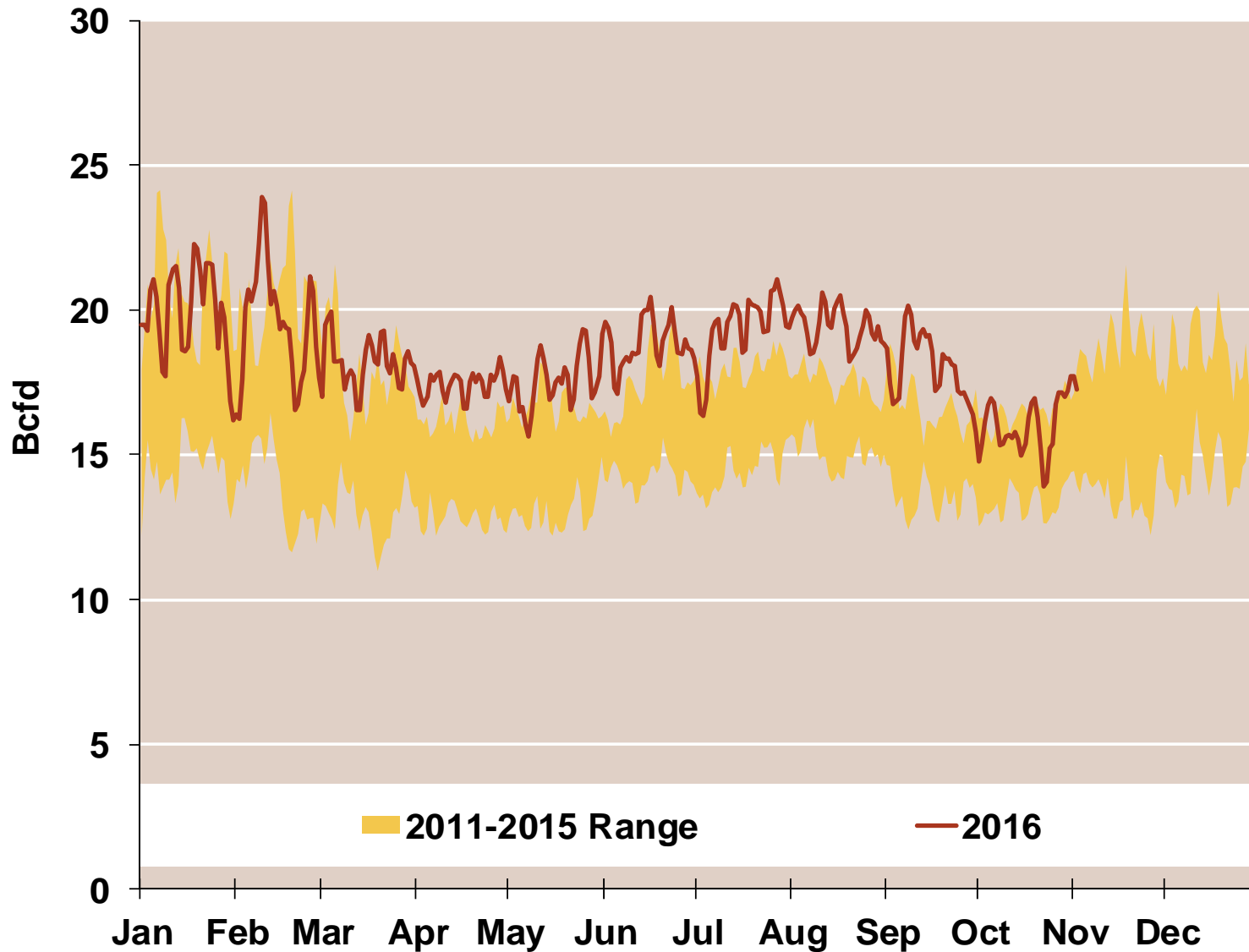


Notes:

Source: Derived from ICE data

Updated Nov-2016

### Daily Southeast Natural Gas Demand All Sectors

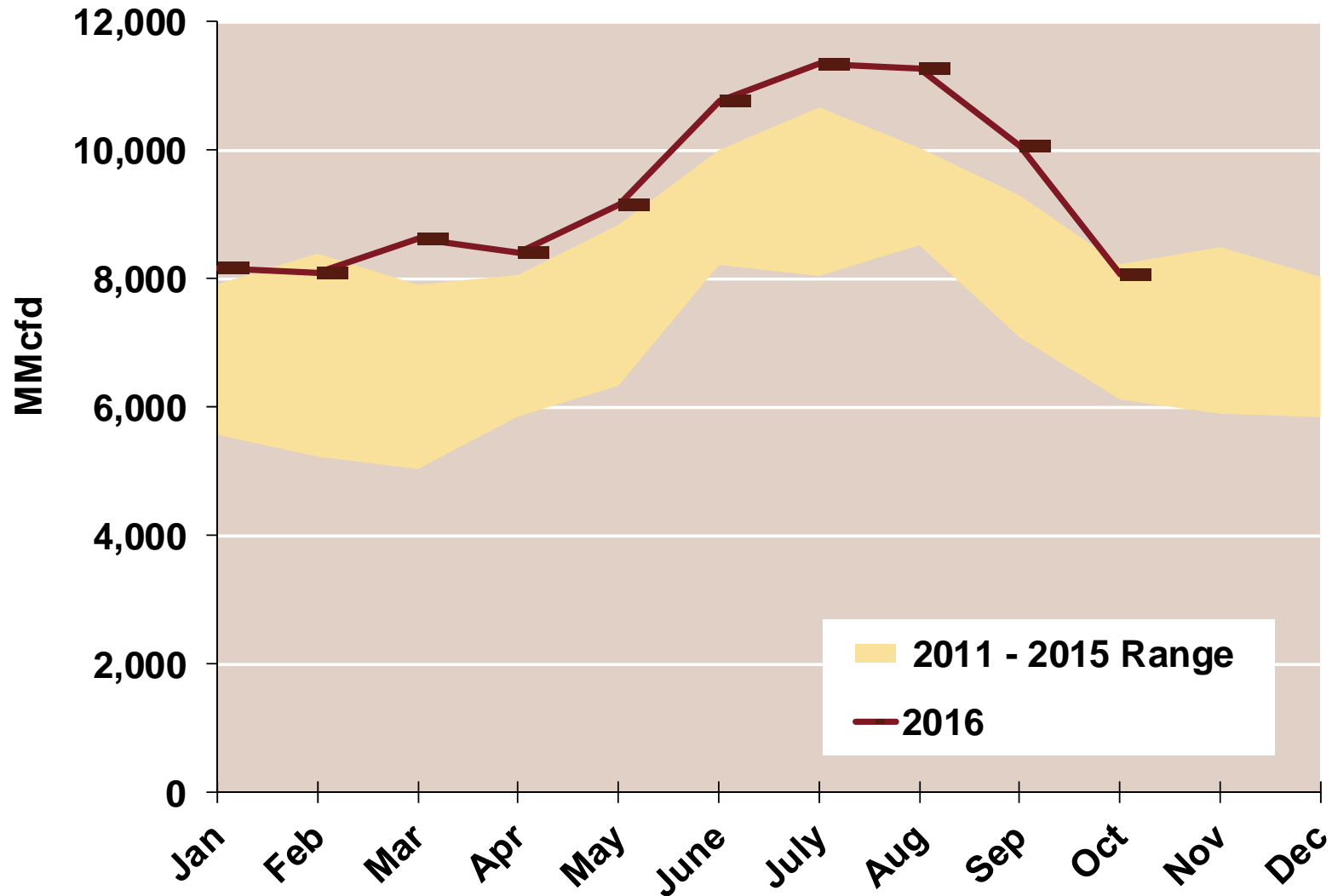


Source: Derived from *Bentek Energy* data

Note: Southeast is defined as North Carolina, South Carolina, Georgia, Florida, Alabama, Mississippi, Louisiana, Arkansas, and Tennessee.

Updated: Oct 2015

## Southeast Natural Gas Consumption for Power Generation



Source: Derived from *Bentek Energy* data

Note: Southeast is defined as North Carolina, South Carolina, Georgia, Florida, Alabama, Mississippi, Louisiana, Arkansas, and Tennessee.

Updated: Oct 2015