

OE ENERGY MARKET SNAPSHOT

West Version –Data through September 2015

Office of Enforcement
Federal Energy Regulatory Commission
Oct 2015

Natural Gas and Fuels Markets

West

West Day Ahead Natural Gas Prices Averaged Annually/Seasonally

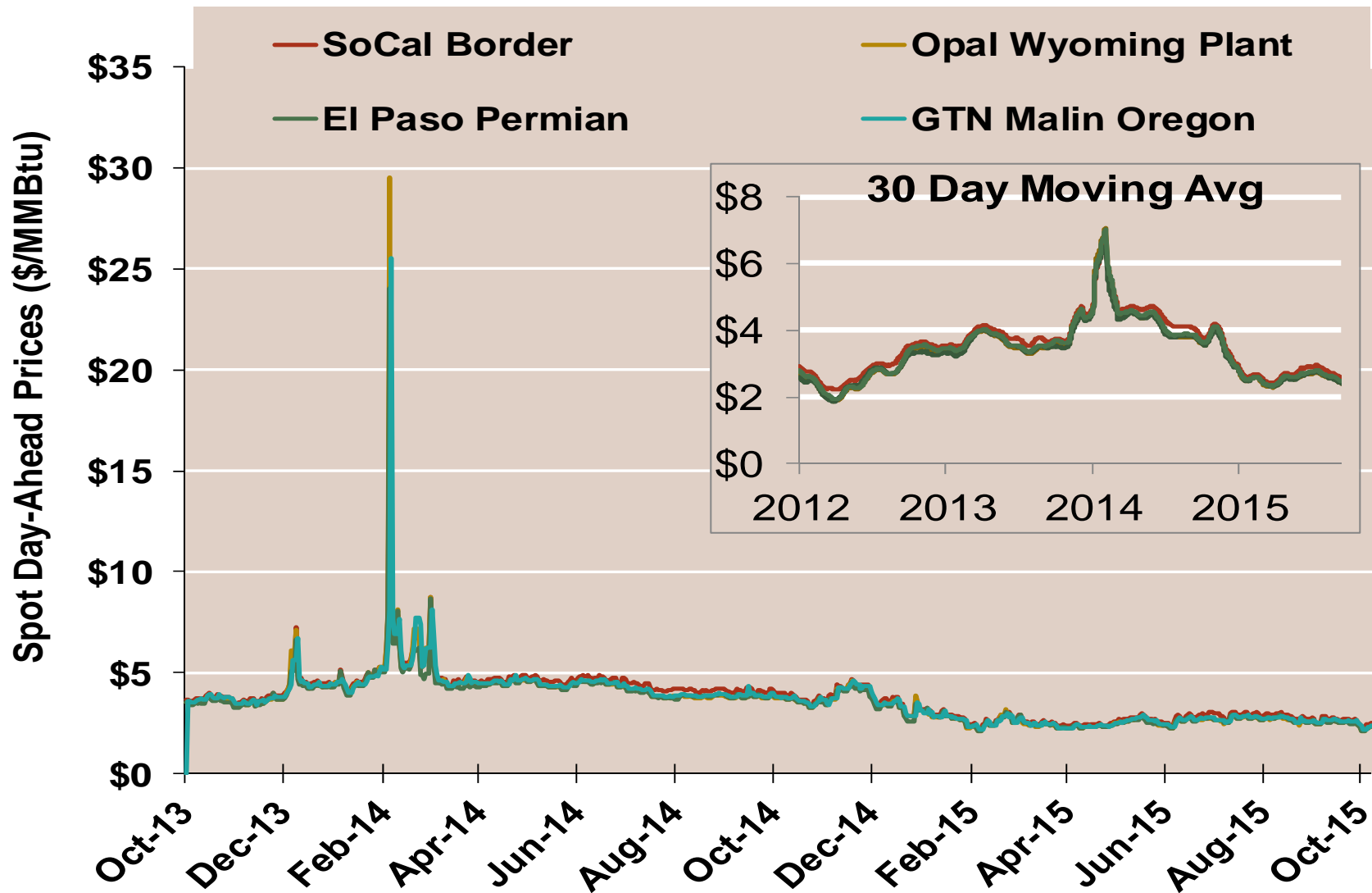
	Average Day Ahead Prices (\$/MMBtu)	SoCal Border	Opal Wyoming Plant	El Paso Permian	GTN Malin Oregon	Henry Hub
2012	Annual	2.91	2.68	2.67	2.73	2.75
	Summer	2.83	2.58	2.61	2.61	2.69
	Winter 2012/2013	3.62	3.46	3.38	3.52	3.47
2013	Annual	3.83	3.65	3.63	3.71	3.72
	Summer	3.82	3.61	3.63	3.67	3.76
	Winter 2013/2014	4.89	4.88	4.68	4.88	4.61
2014	Annual	4.50	4.35	4.26	4.39	4.32
	Summer	4.34	4.07	4.07	4.14	4.18
	Winter 2014/2015	3.15	3.03	3.01	3.06	3.21
2015 YTD	Annual	2.71	2.56	2.57	2.60	2.76
	Summer	2.71	2.55	2.55	2.60	2.72
	Winter 2015/2016					

Notes:

Source: ICE

Updated Oct-2015

West Daily Day-Ahead Prices

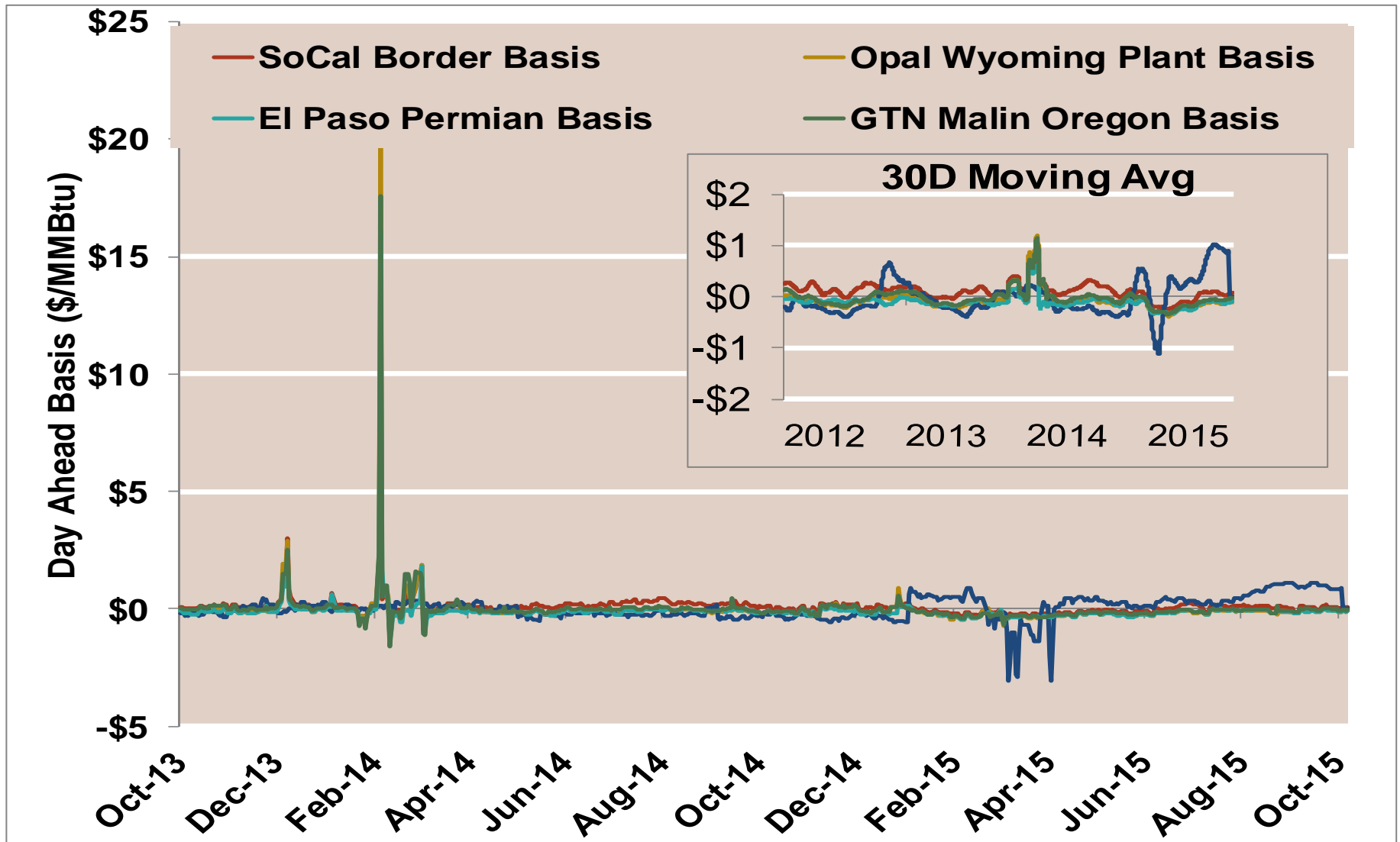


Notes:

Source: ICE

Updated Oct-2015

West Daily Day-Ahead Basis

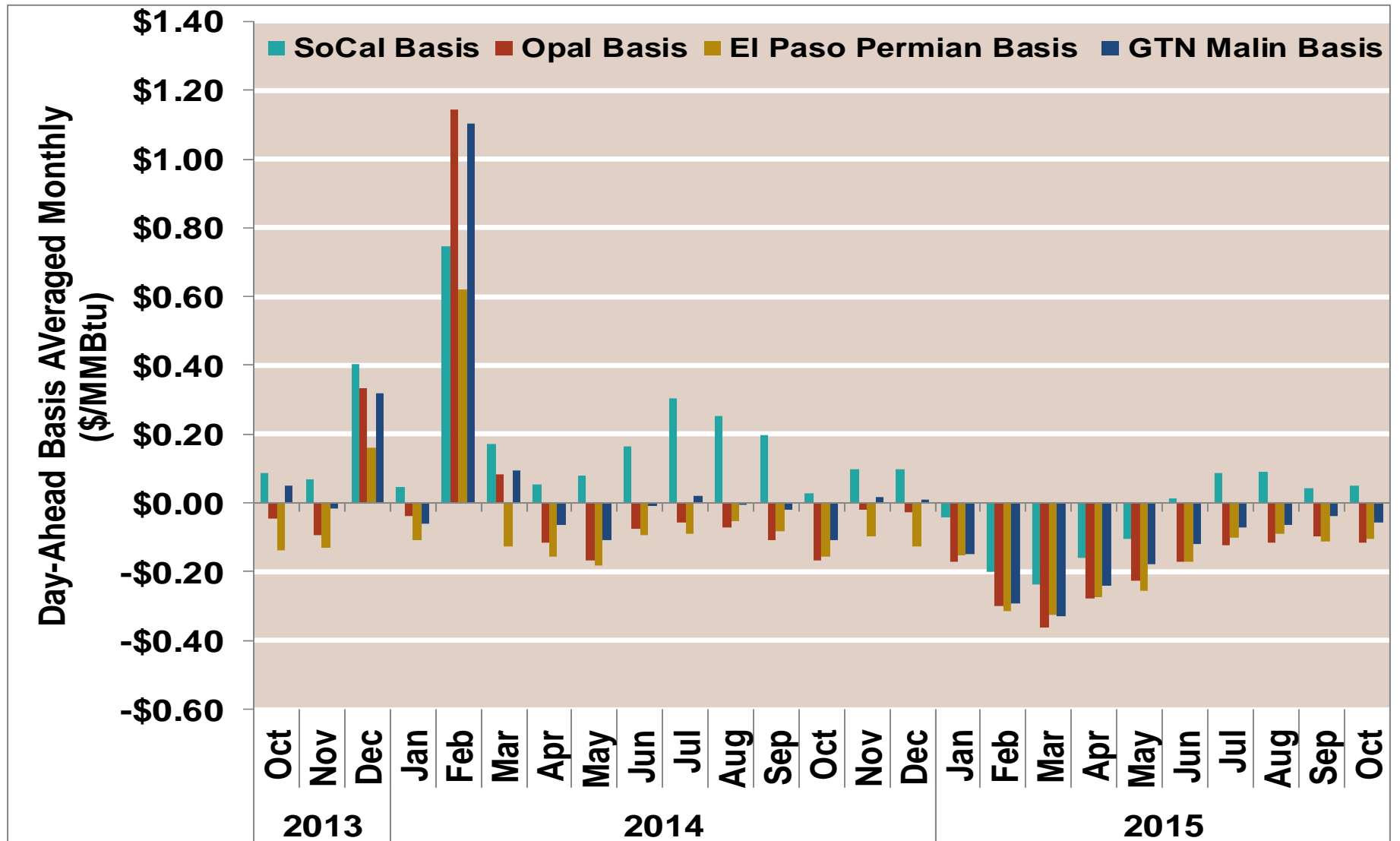


Notes:

Source: ICE

Updated Oct-2015

West Average Monthly Basis

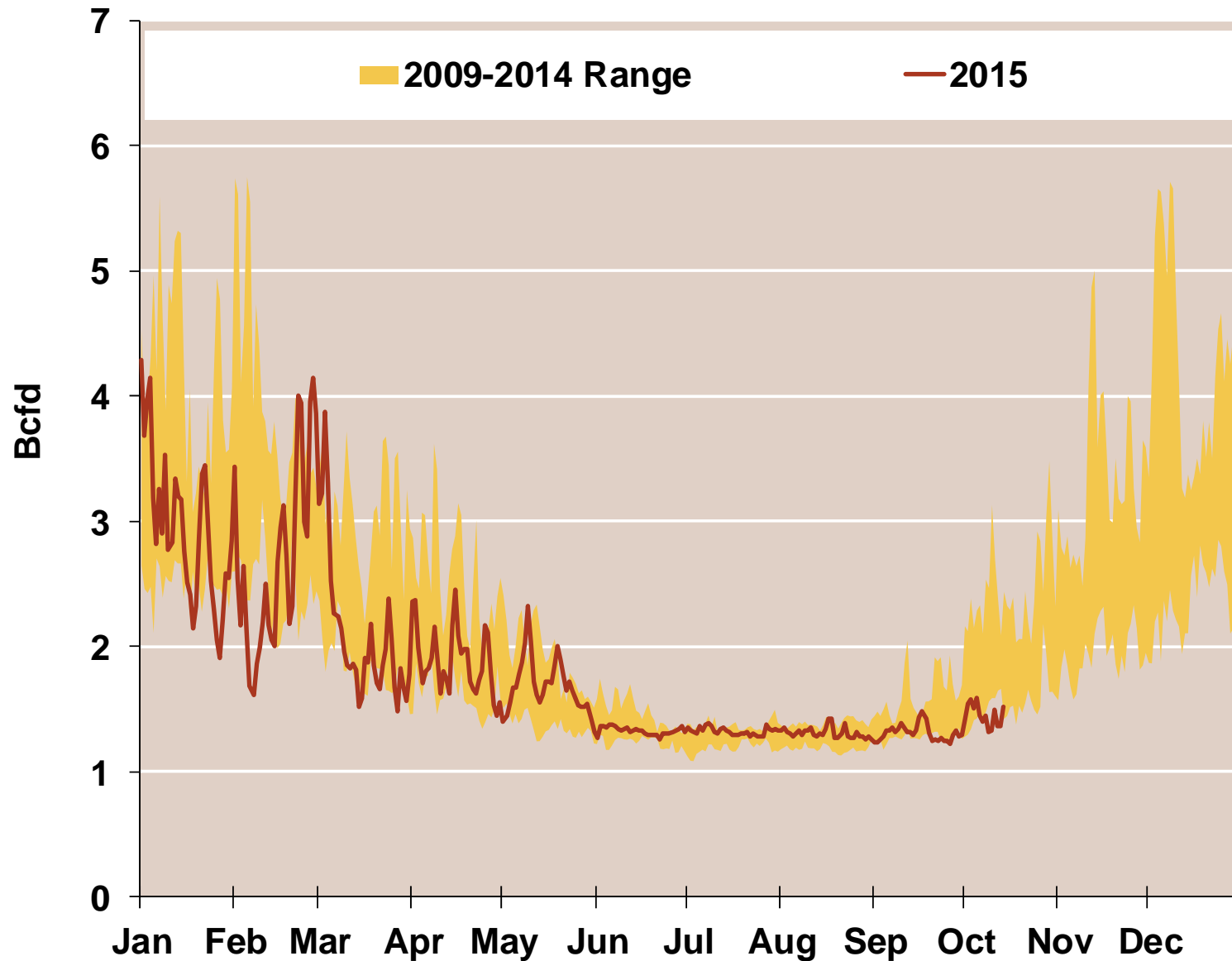


Notes:

Source: ICE

Updated Oct-2015

Daily Rockies Natural Gas Demand All Sectors



Source: Derived from *Bentek Energy* data

Note: Rockies is defined as Montana, Wyoming, Colorado, and Utah

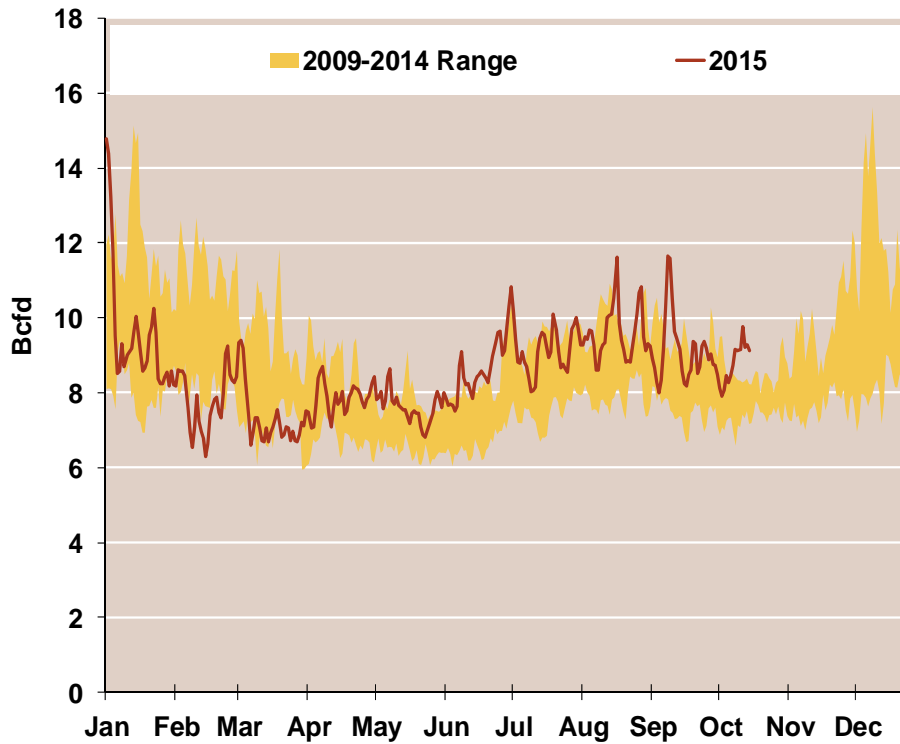
Updated: Oct 2015

8

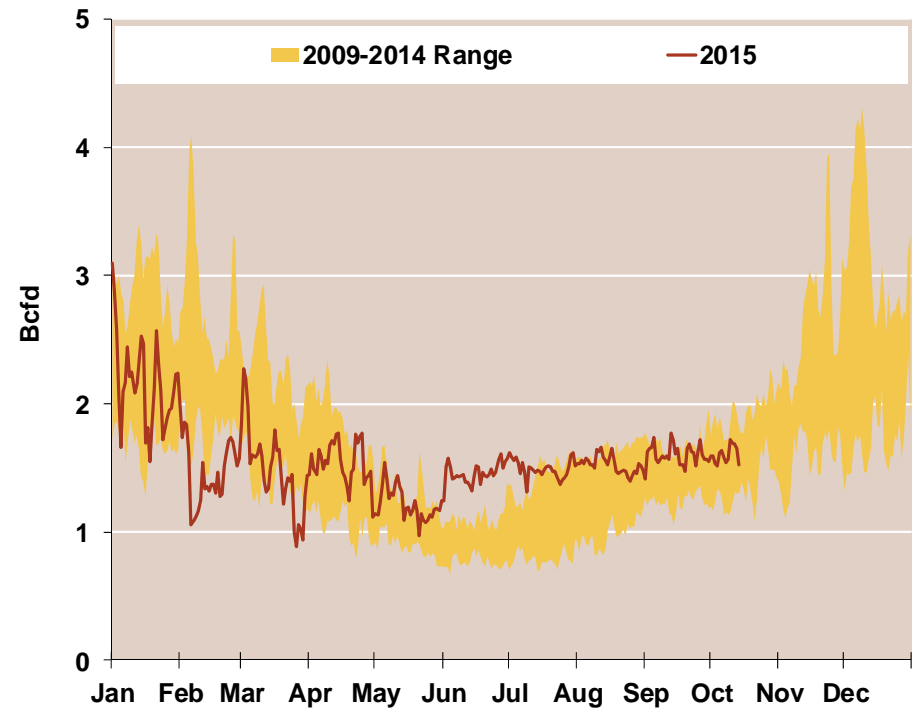
Federal Energy Regulatory Commission • Market Oversight • www.ferc.gov/oversight

Daily Southwest and Northwest Natural Gas Demand All Sectors

Southwest



Northwest



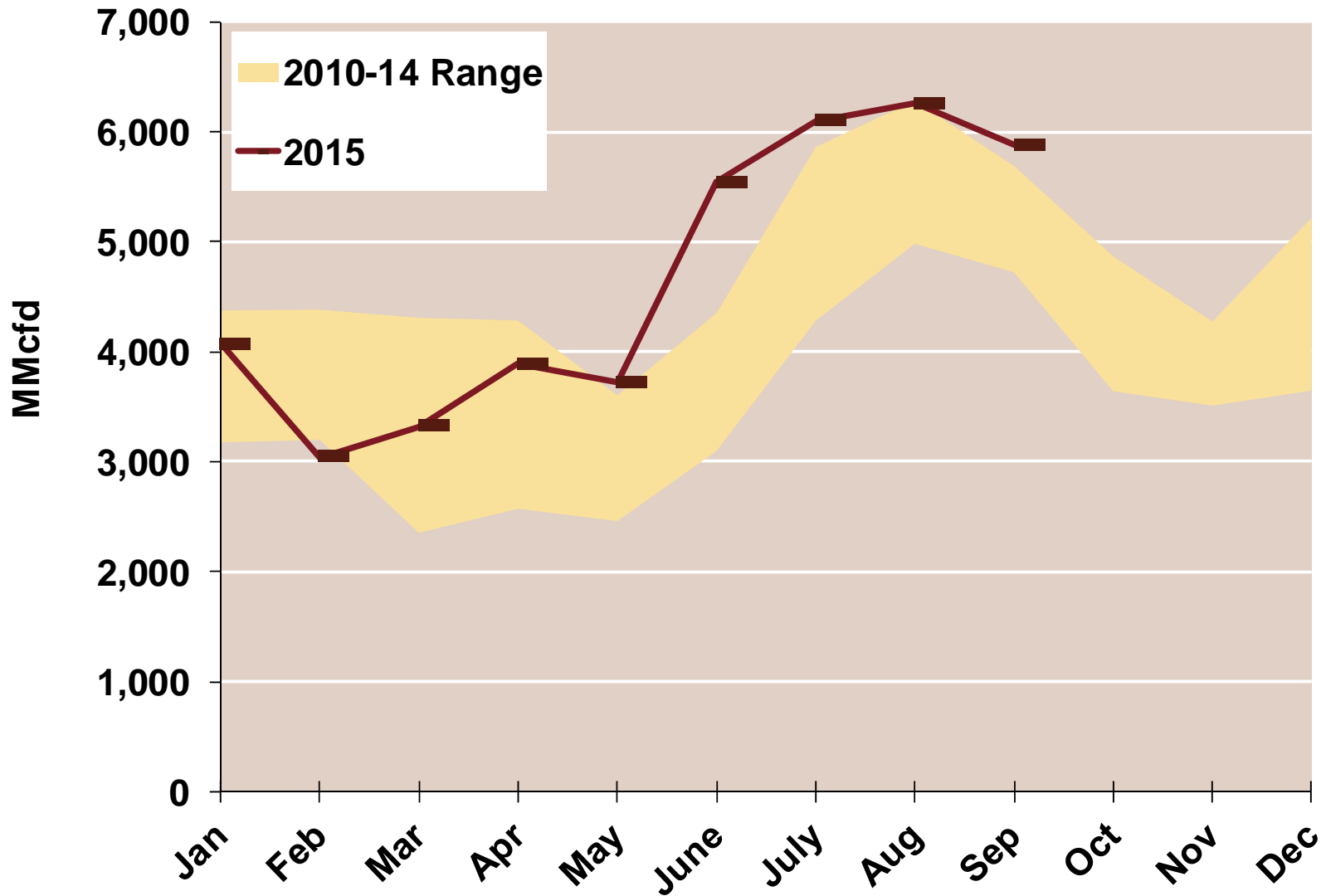
Source: Derived from *Bentek Energy* data

Note: Data derived from interstate natural gas pipeline flows.

Southwest is defined as New Mexico, Arizona, California, Nevada and the Northwest is defined as Idaho, Oregon, and Washington

Updated: Oct 2015

West Natural Gas Consumption for Power Generation



Source: Derived from *Bentek Energy* data

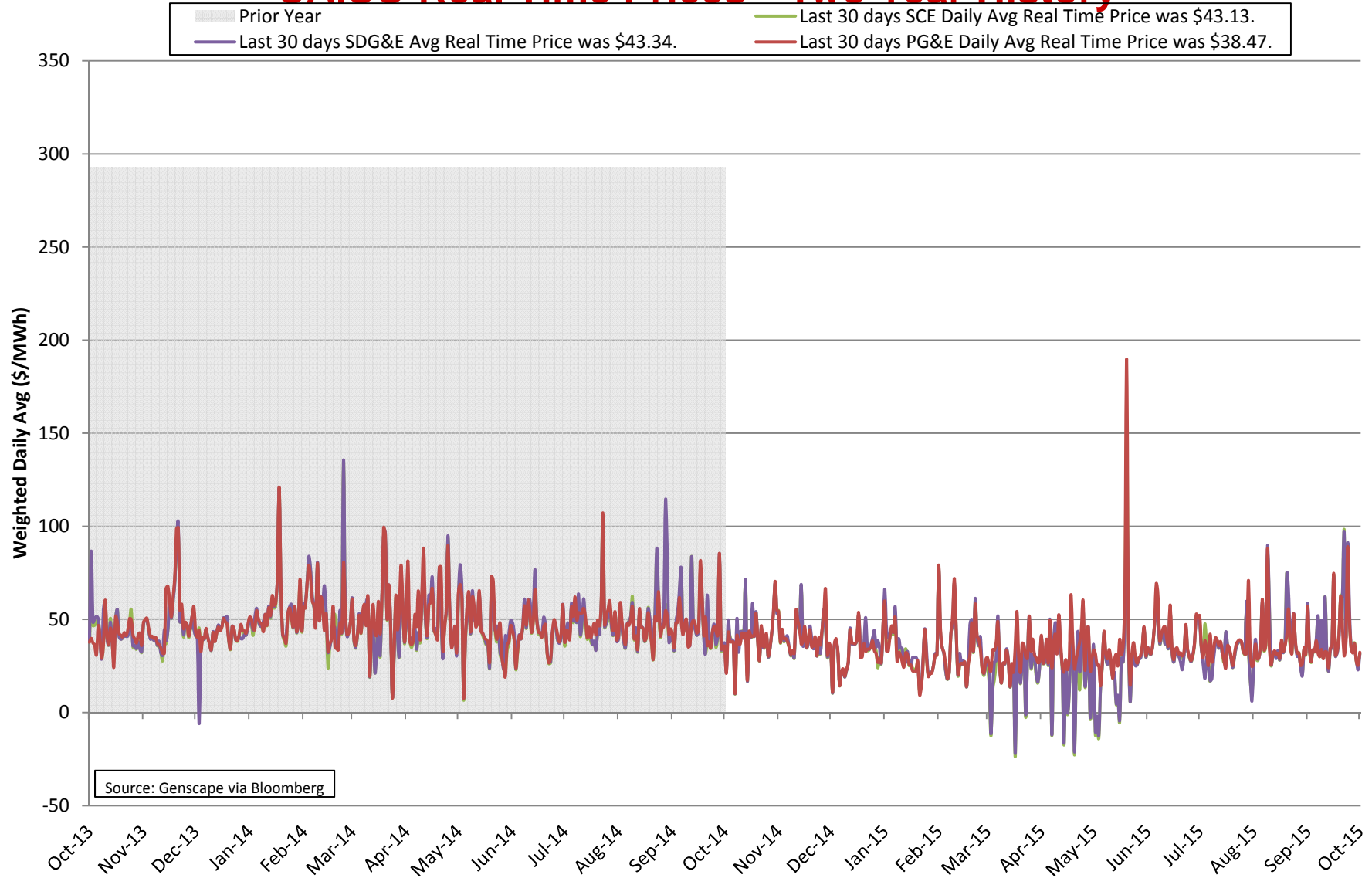
Note: West is defined as Montana, Wyoming, Colorado, Utah New Mexico, Arizona, California, Nevada , Idaho, Oregon, and Washington



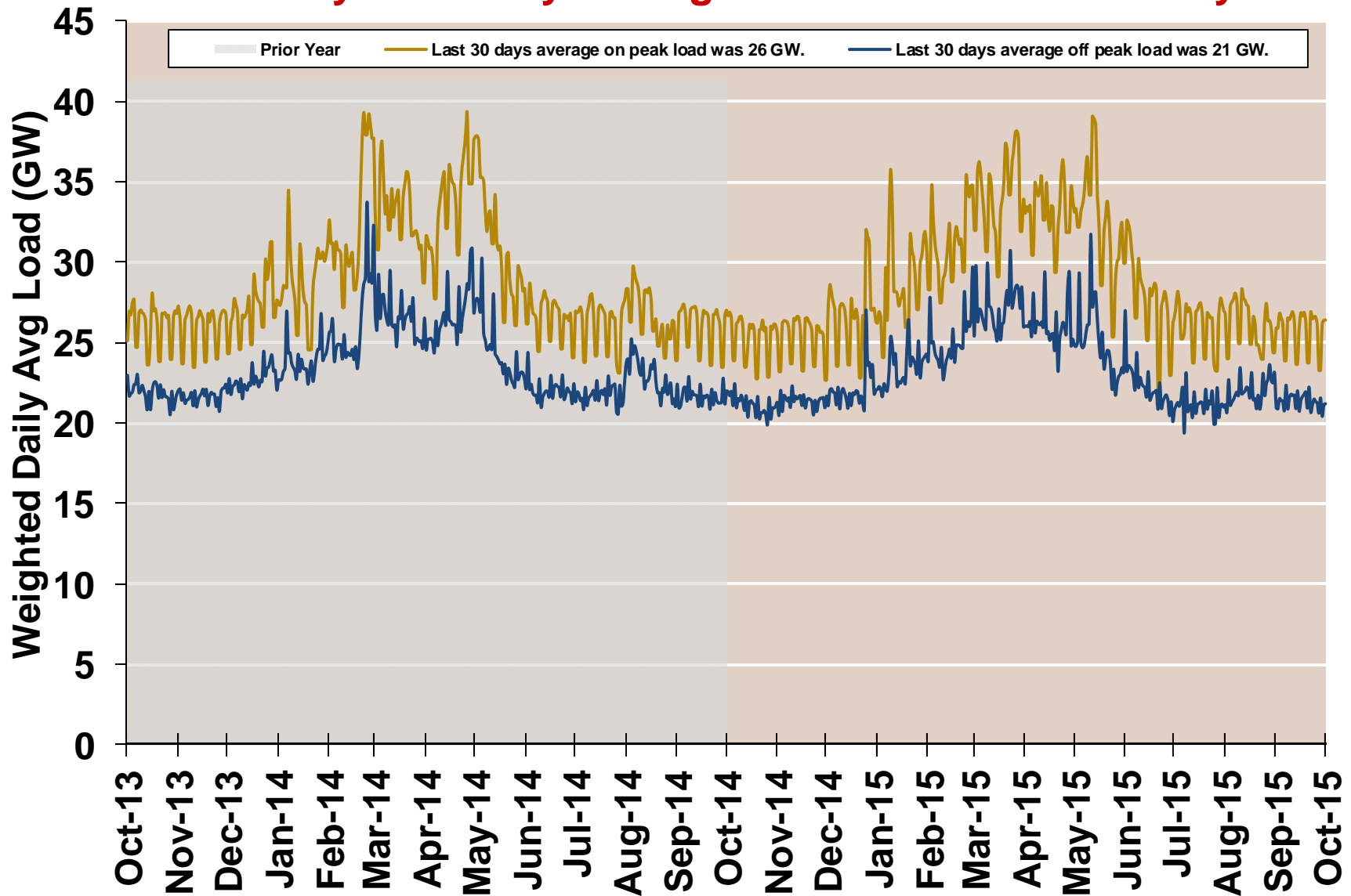
Electricity Markets

West

CAISO Real Time Prices—Two Year History



CAISO System Daily Average Load —Two Year History



Source: Genscape via Bloomberg

Updated: Oct 2015

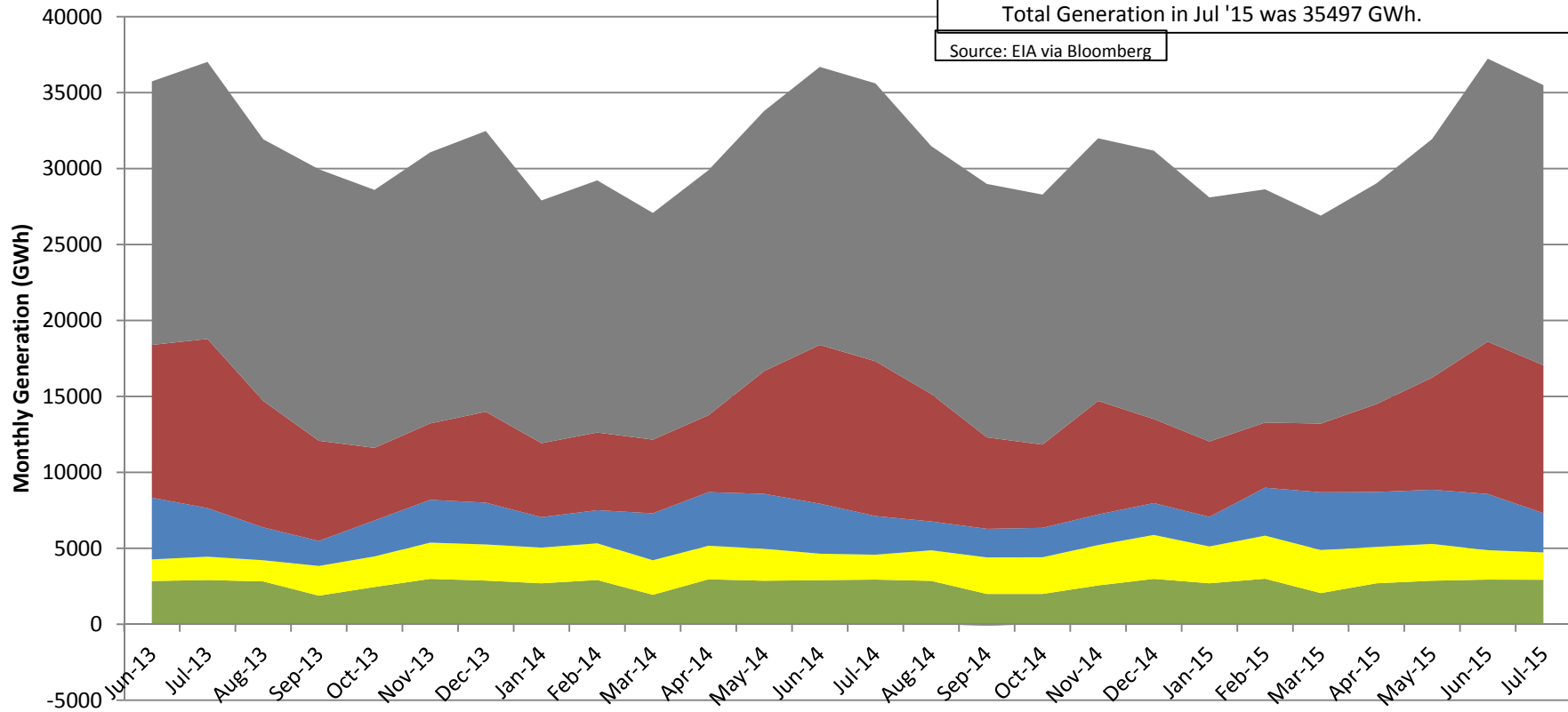
Mountain Regional Generation Mix

Mountain Regional Generation Mix, Jun '13 to Jul '15

States: AZ, CO, ID, MT, NM, NV, UT, WY

- Coal Generation in Jul '15 was 18444 GWh (52%).
- Gas Generation in Jul '15 was 9740 GWh (27%).
- Hydro Generation in Jul '15 was 2583 GWh (7%).
- Othr Renew Generation in Jul '15 was 1800 GWh (5%).
- Nuclear Generation in Jul '15 was 2910 GWh (8%).
- Oil Generation in Jul '15 was 20 GWh (0%).
- Total Generation in Jul '15 was 35497 GWh.

Source: EIA via Bloomberg



Pacific Contiguous Generation Mix

