

UNITED STATES OF AMERICA  
FEDERAL ENERGY REGULATORY COMMISSION

Common Performance Metrics

Docket No. AD14-15-000

ERRATA NOTICE OF STAFF REPORT

(August 3, 2017)

On August 12, 2016, as revised on October 18, 2016, the Commission issued a staff report on Common Metrics. This errata notice serves to make the following corrections to the report:

1. Table 7, Notes at page 39: “DEF and LG&E/KU do not submit data for this metric” is revised as “DEF does not submit data for this metric and LG&E/KU does not submit comparable data for this metric.” Table 7 is revised as follows:

**Table 7: Average annual system impact study costs, 2010-2014.**

Respondent	2010	2011	2012	2013	2014
RTOs and ISOs					
CAISO	33,199	15,516	14,992	16,268	0
ISO-NE	121,363	102,468	131,287	135,500	175,409
NYISO	43,650	53,410	66,513	45,940	118,430
PJM	10,800	7,100	13,100	16,600	11,300
SPP	15,655	20,623	18,428	25,232	20,009
non-RTOs and ISOs					
APS	37,127	27,646	152,195	384,097	411,226
DEC	27,414	109,783	25,701	62,276	5,010
DEP					297
PAC					
SOU		11,490	20,830	12,550	18,229

*Source:* Commission staff based on information collection FERC-922.

*Notes:* (1) The values in the table are expressed in nominal dollars. (2) DEF does not submit data for this metric and LG&E/KU does not submit comparable data for this metric. (3) MISO submits average costs across all study types and does not separate system impact study costs. (4) PAC reports only the five-year average. (5) The table reflects responses of \$0 as reported.

2. Table 8, Notes at page 40: “DEF, DEP, and LG&E/KU do not submit data for this metric” is revised to read “DEF and DEP do not submit data for this metric and LG&E/KU does not submit comparable data for this metric.” Further, “(5) The

table reflects responses of \$0 as reported” has been added. Table 8 is revised as follows:

**Table 8: Average annual facility impact study costs, 2010-2014.**

Respondent	2010	2011	2012	2013	2014
RTOs and ISOs					
CAISO	48,537	21,571	21,142	53,749	26,758
ISO-NE	131,692	0	20,404	0	18,973
NYISO		200,000	52,630	318,805	319,530
PJM	44,800	36,200	30,300	22,900	22,800
SPP	14,998	4,255	1,953	2,853	2,596
non-RTOs and ISOs					
APS	29,890	0	32,840	44,080	25,237
DEC	7,422	14,710	17,825	3,940	34,250
PAC					
SOU		37,766	15,014	6,414	12,870

*Source:* Commission staff based information collection FERC-922.

*Notes:* (1) The values in the table are expressed in nominal dollars. (2) DEF and DEP do not submit data for this metric and LG&E/KU does not submit comparable data for this metric. (3) MISO submits average costs across all study types and does not separate facility impact study costs. (4) PAC reports only the five-year average. (5) The table reflects responses of \$0 as reported.

3. Footnote 74 at page 41 is revised as follows:

<sup>74</sup> October 2015 RTO and ISO Metrics Report at 108-110.

4. Footnote 75 at page 41 is revised as follows:

<sup>75</sup> *Id.* at 183, 241; October 2015 SOU Metrics Report at 26.

5. Footnote 91 at page 53 is revised as follows:

<sup>91</sup> October 2015 RTO and ISO Metrics Report at 367.

6. Footnote 92 at page 55 is revised as follows:

<sup>92</sup> *Id.* at 59 and 314.

7. Footnote 99 at page 57 is revised as follows:

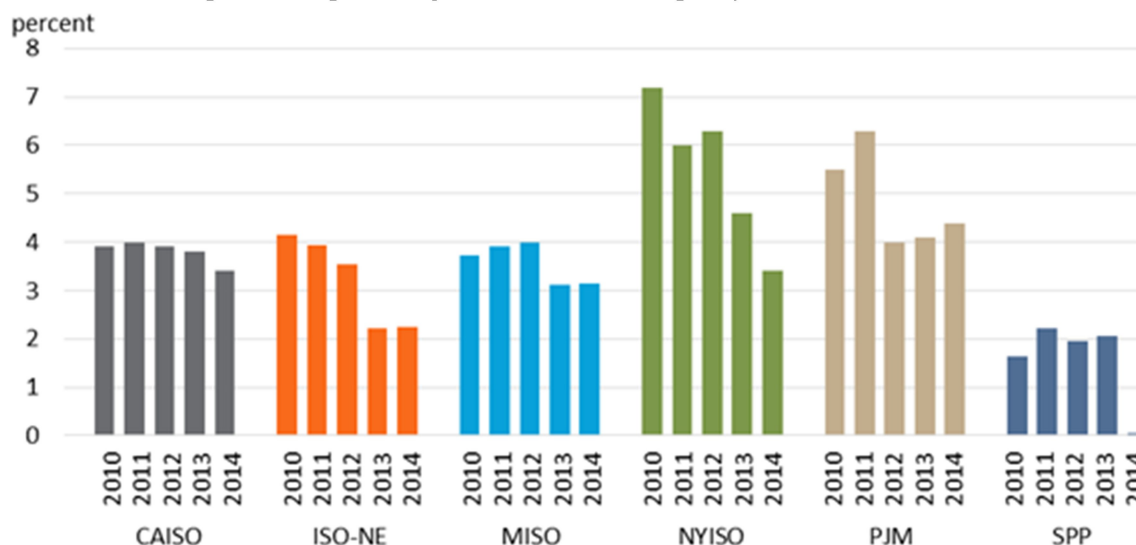
<sup>99</sup> *Id.* at 307.

8. Footnote 105 at page 62 is revised as follows:

<sup>105</sup> October 2015 RTO and ISO Metrics Report at 235.

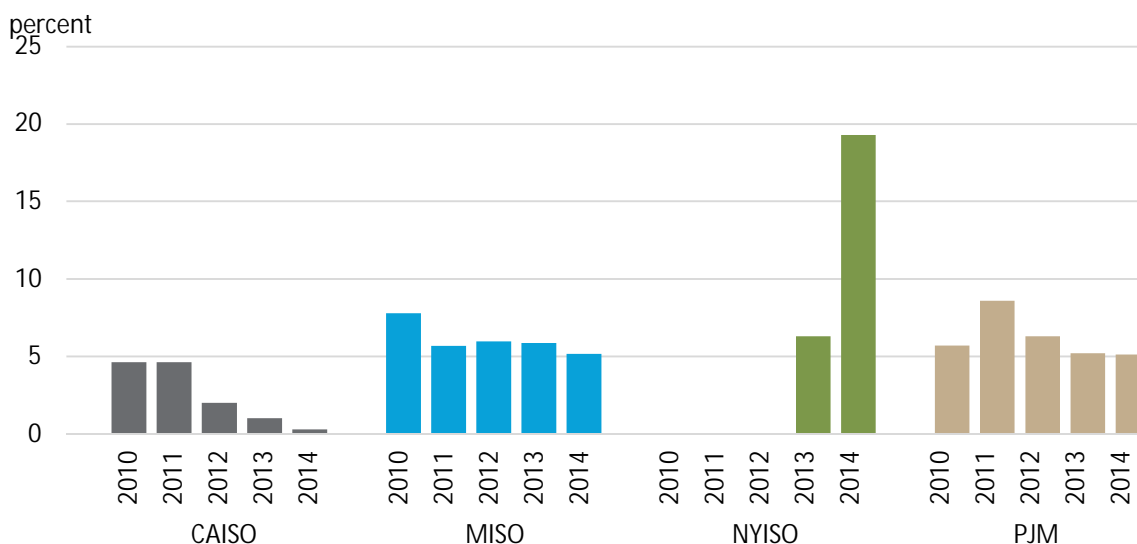
9. The following text on page 63 “Figure 31 shows demand response as a percent of total installed capacity in five RTOs and ISOs from 2010-2014” is revised as follows “Figure 31 shows demand response as a percent of total installed capacity in six RTOs and ISOs from 2010-2014.”
10. Figure 31 at page 64: “Demand response as a percentage of total installed capacity” omitted the reported Demand Response information submitted by ISO New England, Inc. (ISO-NE), and the table notes incorrectly that ISO-NE did not provide data for this metric. Figure 31 is revised as follows:

**Figure 31: Demand response as a percentage of total installed capacity.**



Source: Commission staff based on October 2015 RTO and ISO Metrics Report.

11. Figure 32, Notes at page 64: “(1) SPP and ISO-NE do not provide data in response to this metric; (2) CAISO and PJM data indicate the shares of demand response in those CAISO and PJM’s respective synchronized reserve markets.” is revised as “(1) SPP does not provide data in response to this metric. ISO-NE reported only a Demand Response Reserves Pilot program ending after the first six months of 2010, with no additional activity; (2) CAISO and PJM data indicate the shares of demand response in their respective synchronized reserve markets.” Figure 32 is revised as follows:

**Figure 32: Demand response as a percentage of operating reserves, 2010-2014.**

Source: Commission staff based on October 2015 RTO and ISO Metrics Report.

Notes: (1) SPP does not provide data in response to this metric. ISO-NE reported only a Demand Response Reserves Pilot program ending after the first six months of 2010, with no additional activity; (2) CAISO and PJM data indicate the shares of demand response in their respective synchronized reserve markets.

12. Table 13 at page 71: “Common metrics included in information collection FERC-922” inadvertently labeled Metric 15 as “Processing time for generation interconnection requests” and is revised to read “Number of facilities approved to be constructed for reliability purposes.” Table 13 is revised as follows:

<b>Table 13: Common metrics included in information collection FERC-922.</b>		
Reliability Metrics		
Metric No.	Category	Description
1	NERC Reliability Standards Compliance	References to applicable NERC standards
2		Number of violations self-reported and made public by NERC/FERC
3		Number of violations identified and made public as NERC audit findings
4		Total number of violations made public by NERC/FERC
5		Severity level of each violation made public by NERC/FERC
6	Dispatch Reliability	Compliance with operating reserve standards
7		Unserviced energy (or load shedding) caused by violations
8		Balancing Authority ACE Limit (BAAL) or Control Performance Standards 1 and 2 (CPS1 and CPS2)
9		Energy Management System (EMS) Availability
10	Load Forecast Accuracy	Actual peak load as a percentage variance from forecasted peak load
11	Wind Forecast Accuracy	Actual wind availability compared to forecasted wind availability
12	Unscheduled Flows	Difference between net actual interchange and the net scheduled interchange (in megawatt-hours)
13	Transmission Outage Coordination	Percentage of planned outages (200 kilovolt and above) of at least 5 days for which the RTO and ISO or utility notified customers at least one month prior to the outage date

<b>Table 13: Common metrics included in information collection FERC-922.</b>		
Reliability Metrics		
Metric No.	Category	Description
14		Percentage of outages (200 kilovolt and above) canceled by RTO and ISO or utility after being approved previously
15	Long-Term Reliability	Number of facilities approved to be constructed for reliability purposes
16	Planning –	Percentage of approved construction projects on schedule and completed
17	Transmission	Performance of planning process related to completion of (1) reliability studies and (2) economic studies
18	Long-Term Reliability	Processing time for generation interconnection requests
19	Planning – Resources	Actual reserve margins compared with planned reserve margins
20	Interconnection and	Number of study requests
21	Transmission Process	Number of studies completed
22	Metrics	Average age of incomplete studies
23		Average time for completed studies
24		Total cost and types of studies completed
25	Special Protection	Number of special protection systems
26	Systems	Percentage of special protection systems that responded as designed when activated
27		Number of unintended activations
28	System Lambda	System Lambda (on marginal unit), based on FERC Form No. 714 information
29	Availability	(1 – system forced outage rate) as measured over 12 months
30	Fuel Diversity	Fuel diversity in terms of energy produced and installed capacity

A revised copy of the staff report on Common Metrics incorporating these revisions is also being posted in the above-captioned docket and on FERC.gov.

Document Content(s)

AD14-15-000 Errata Notice 8-1-2017.DOCX.....1-5