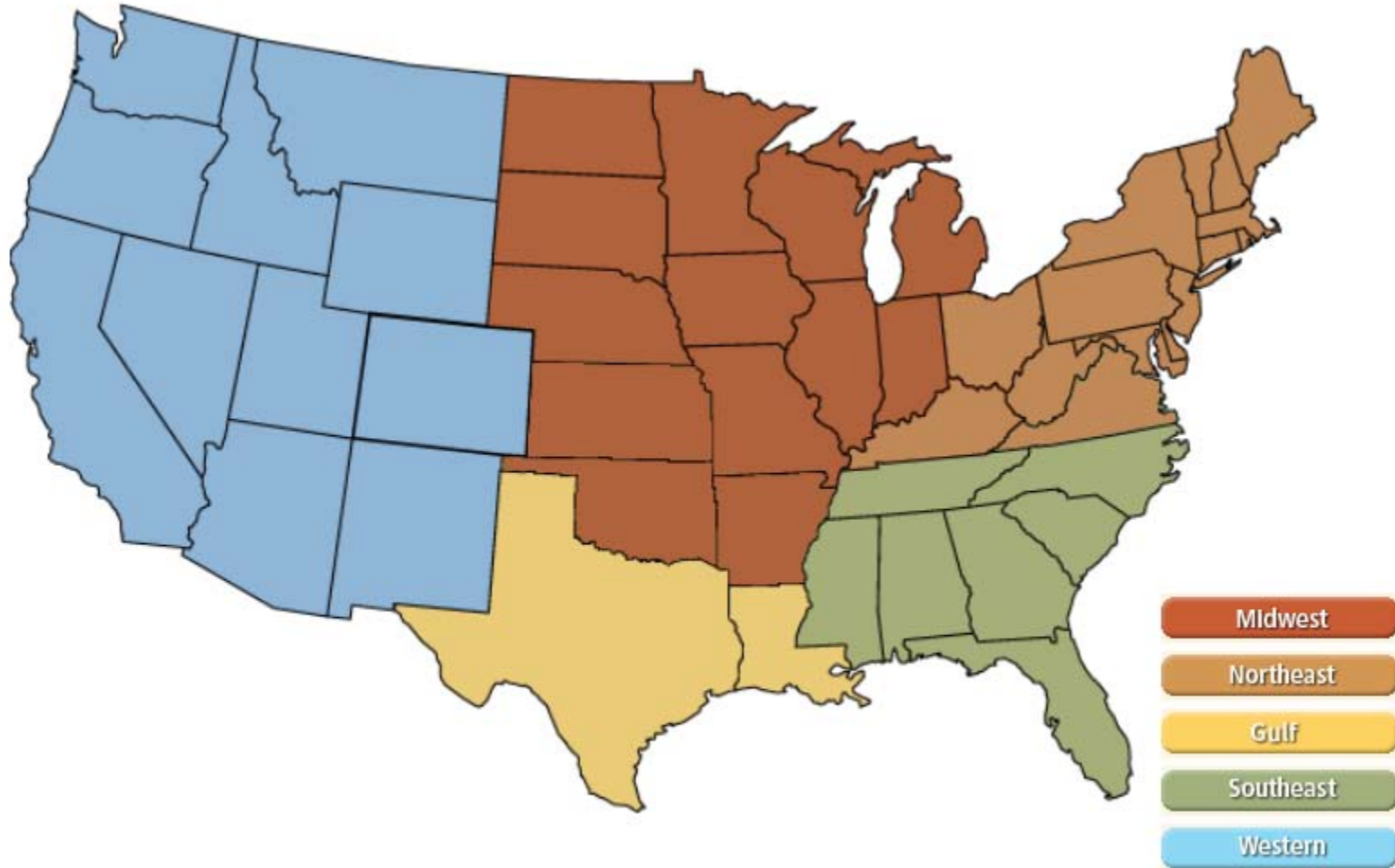
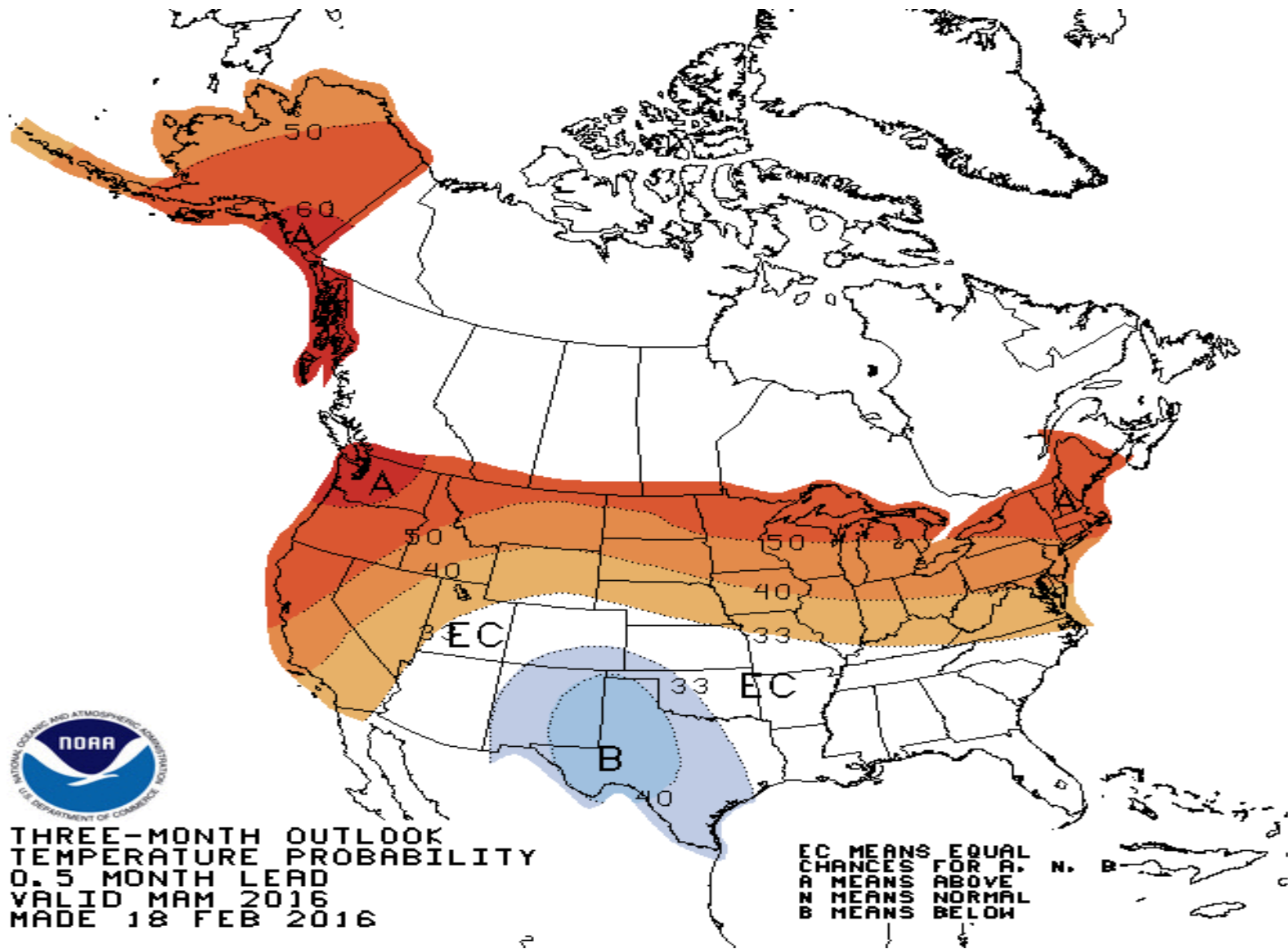


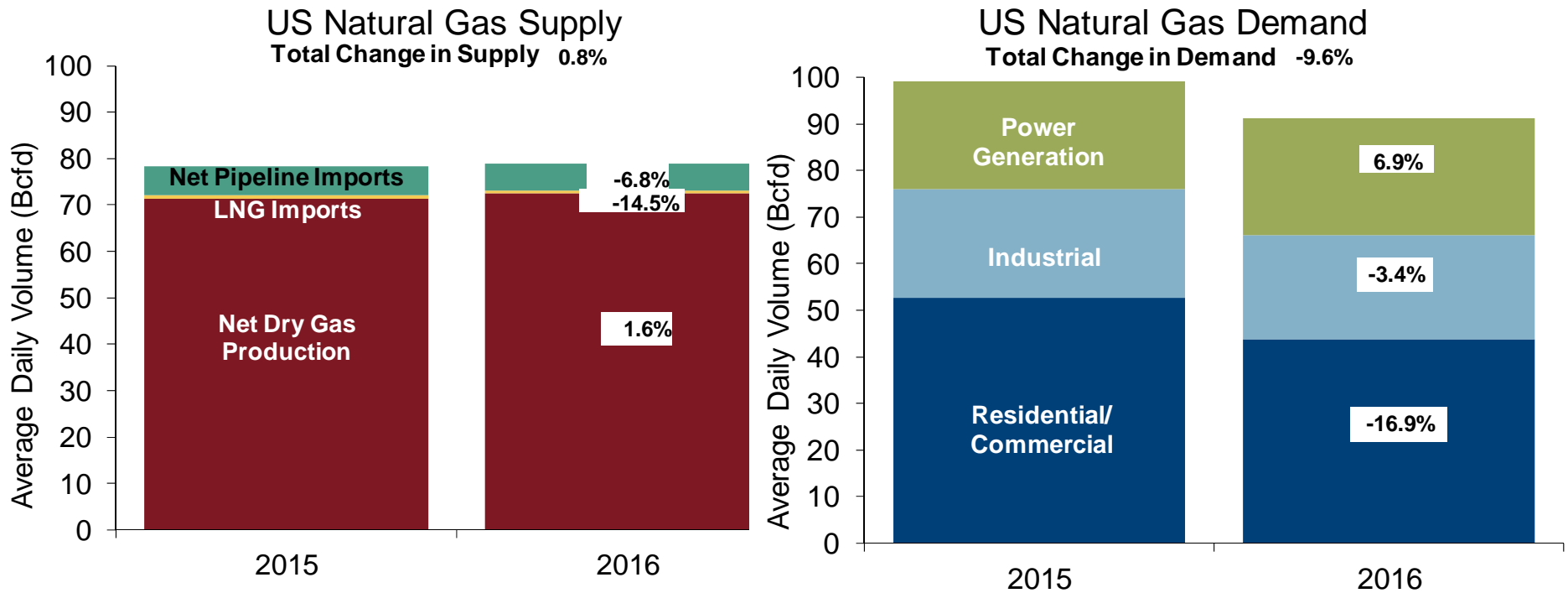
# National



# NOAA 3 Month Outlook

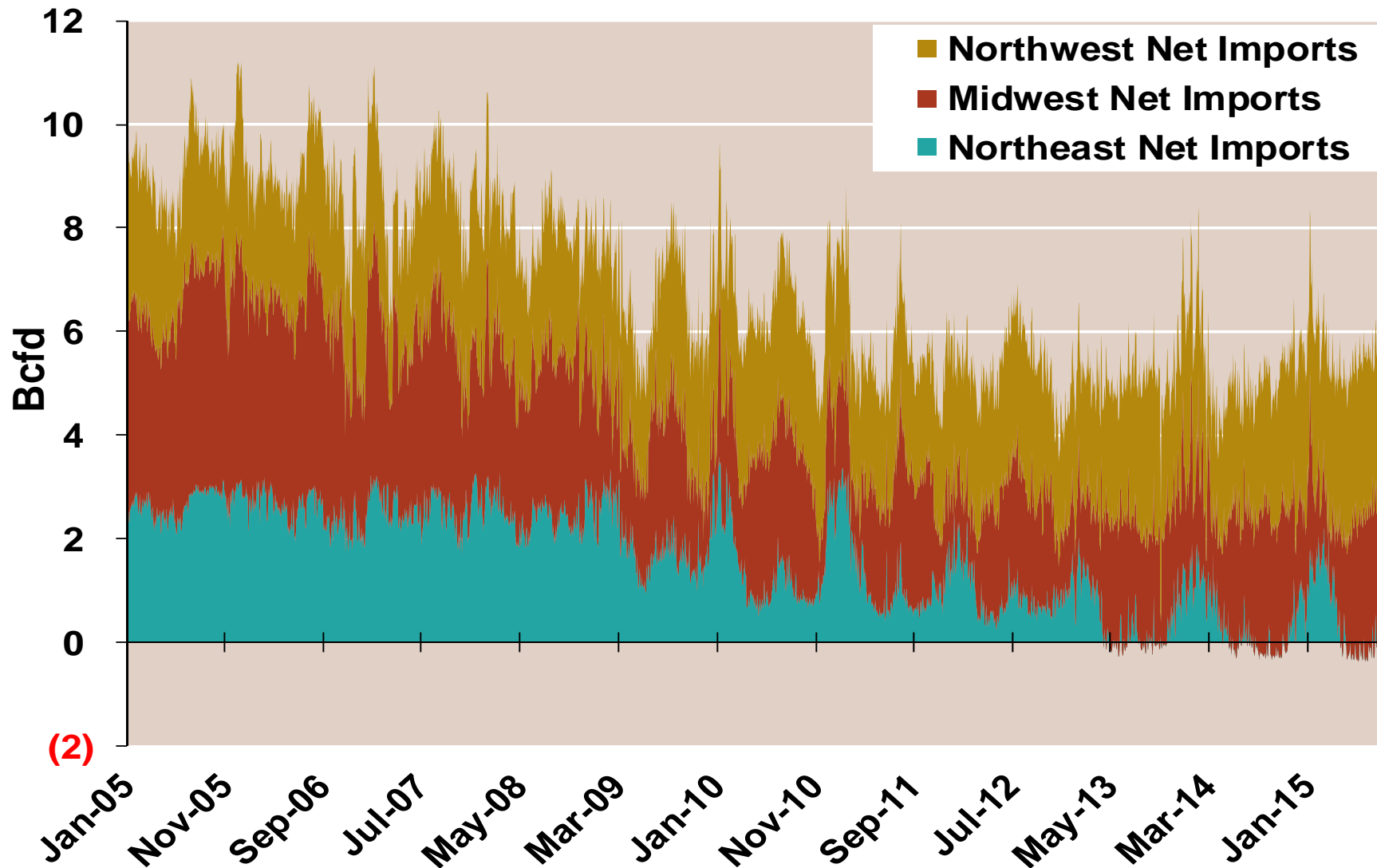


## U.S. NG Supply and Demand Feb 2015 YTD vs. Feb 2016 YTD

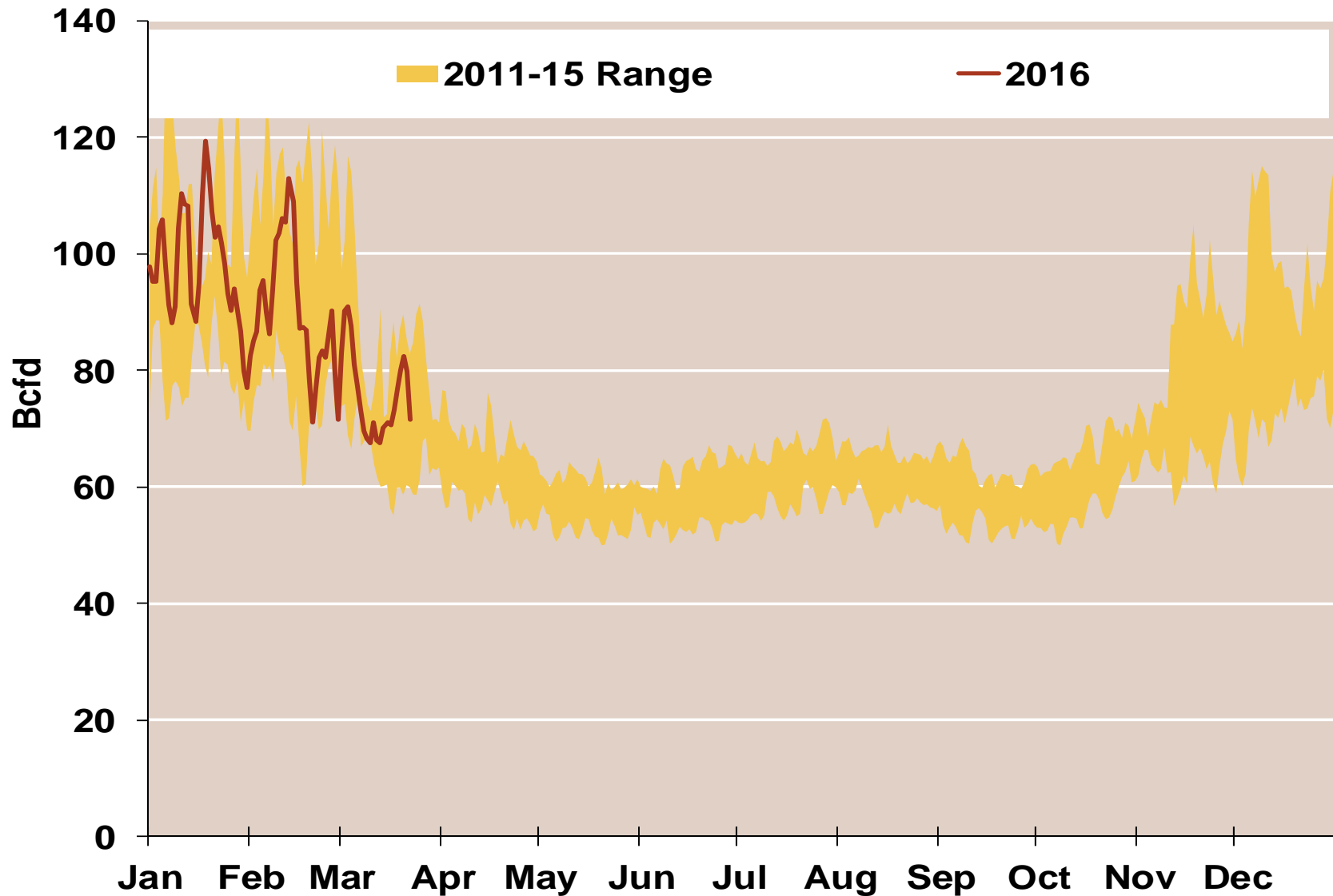


Note: Balance includes all amounts not attributable to other categories.  
Source: Derived from *Bentek Energy* data

## Regional Canadian Imports

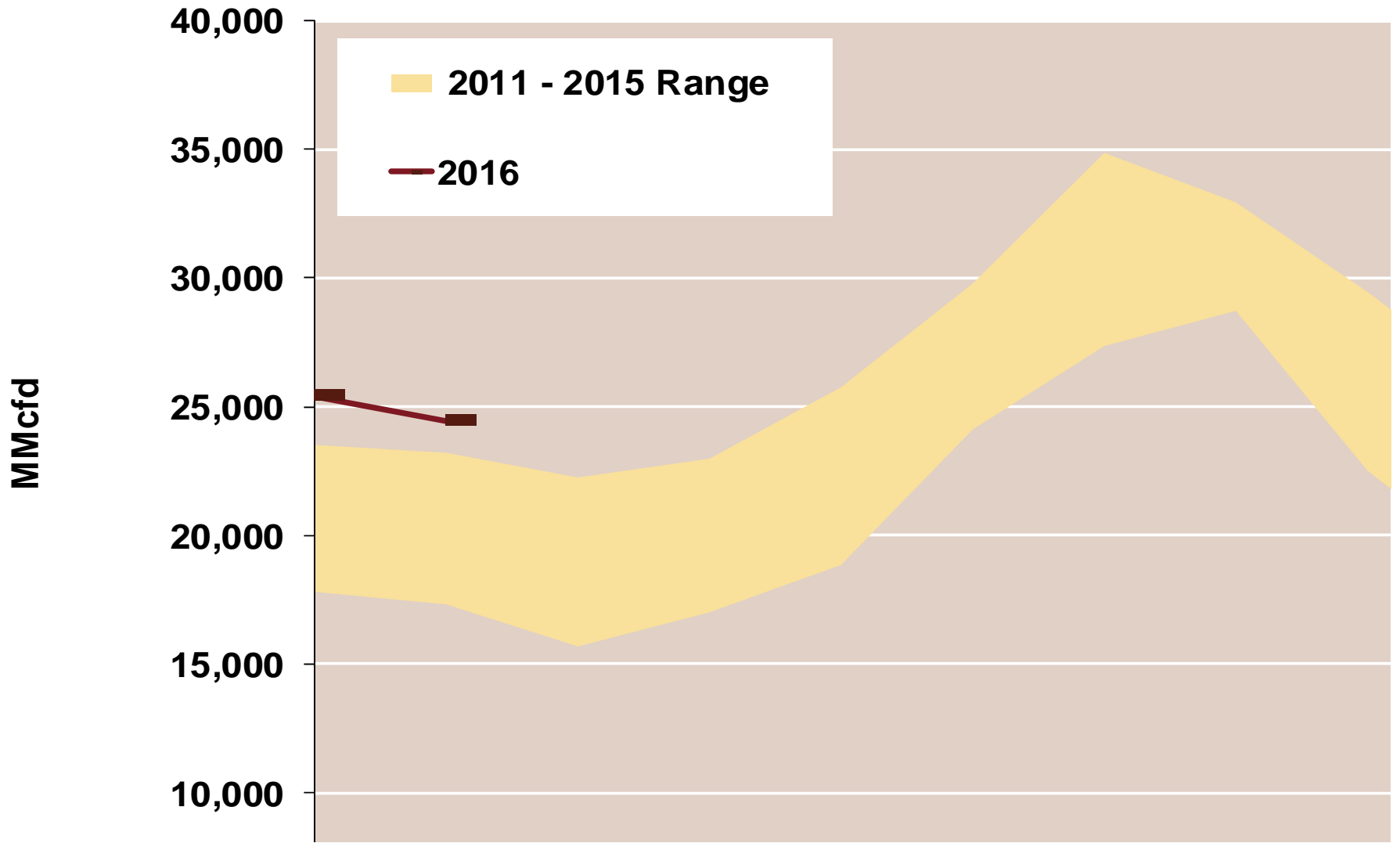


## Total U.S. Natural Gas Demand All Sectors

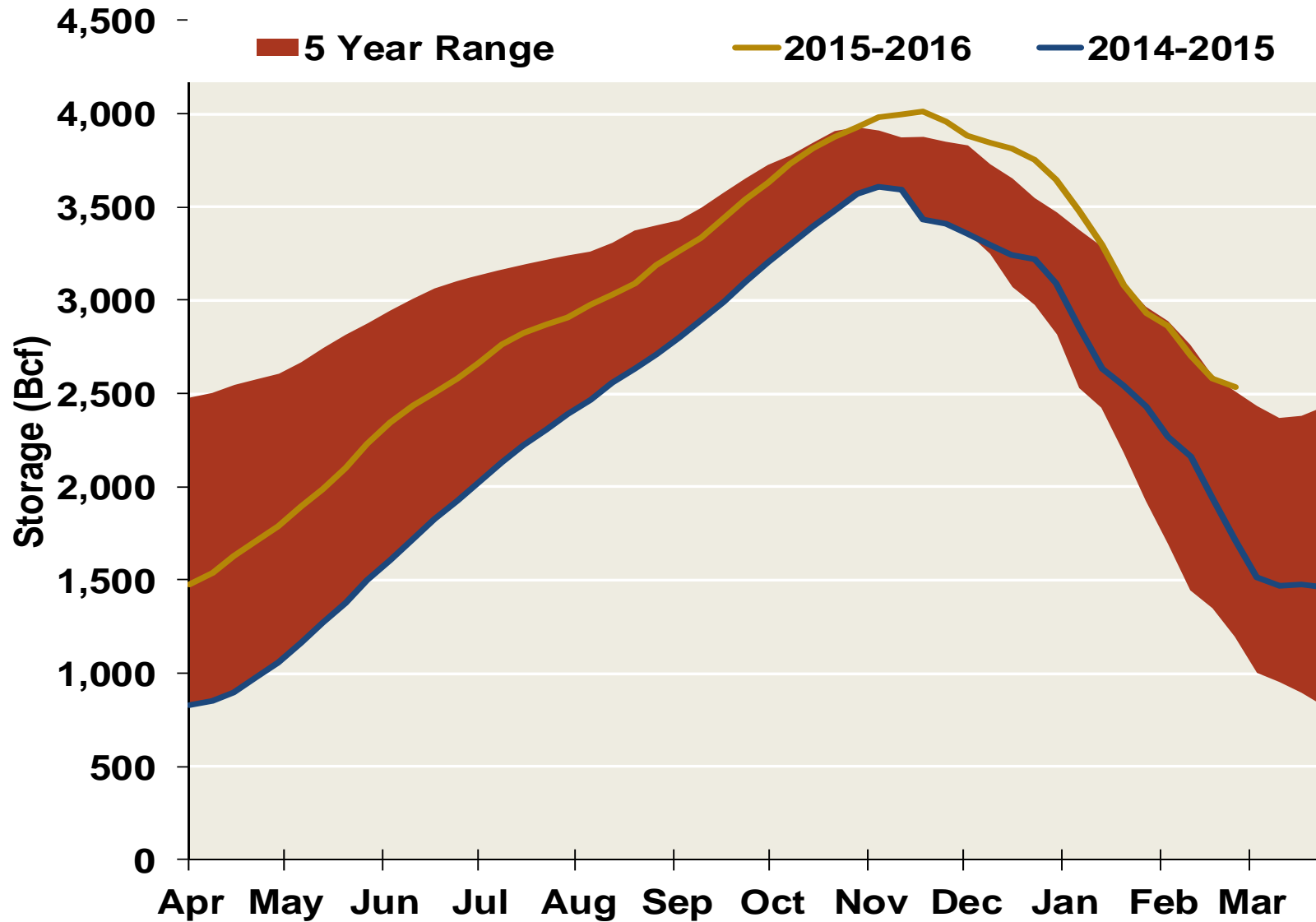


Source: Derived from *Bentek Energy* data, derived from interstate pipeline flow and modeled data.

## U.S. Natural Gas Consumption for Power Generation



## EIA Storage Inventories



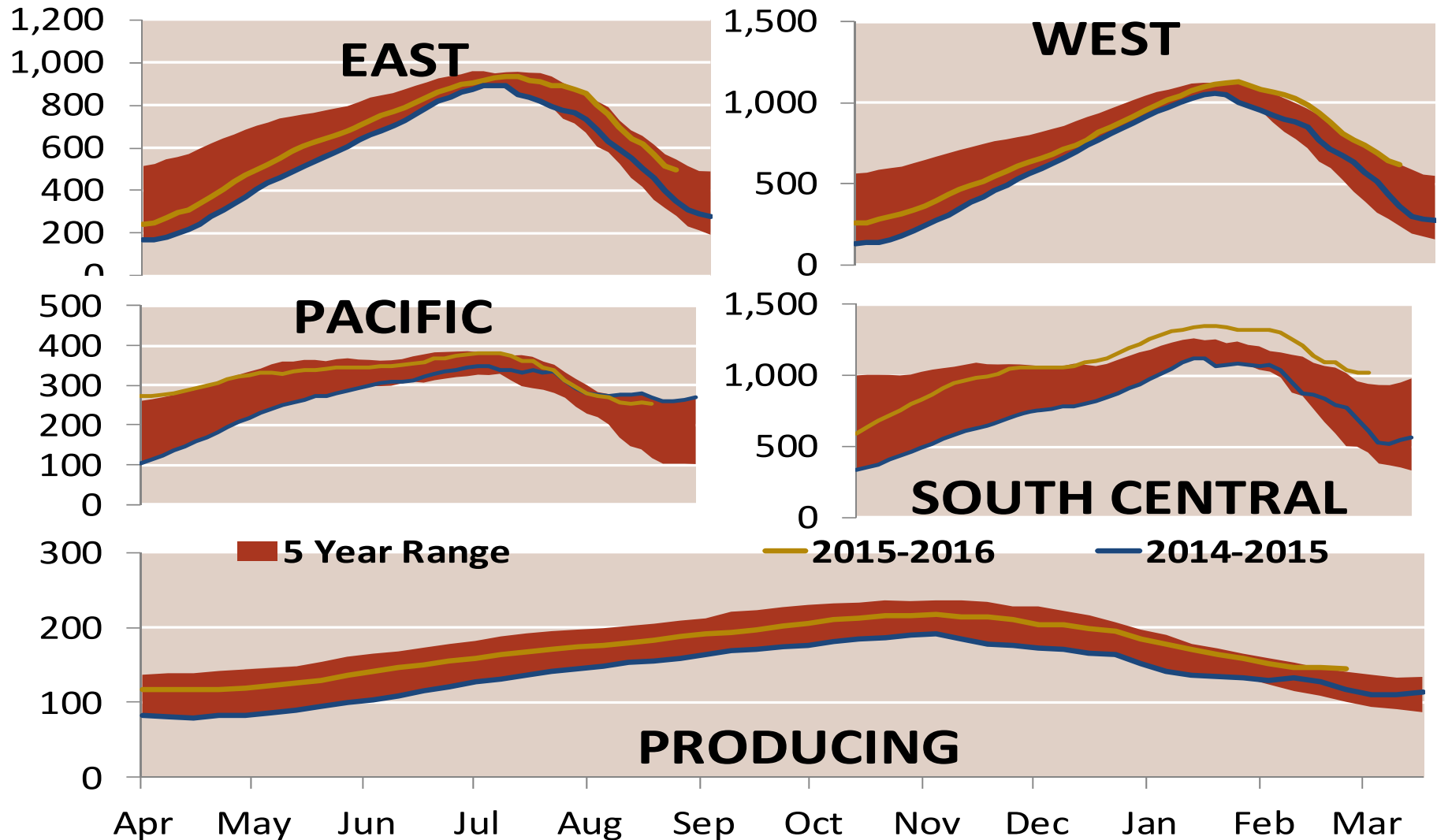
Notes:

Source: Derived from Bloomberg Data

Updated

Mar-16

## EIA Storage Inventories



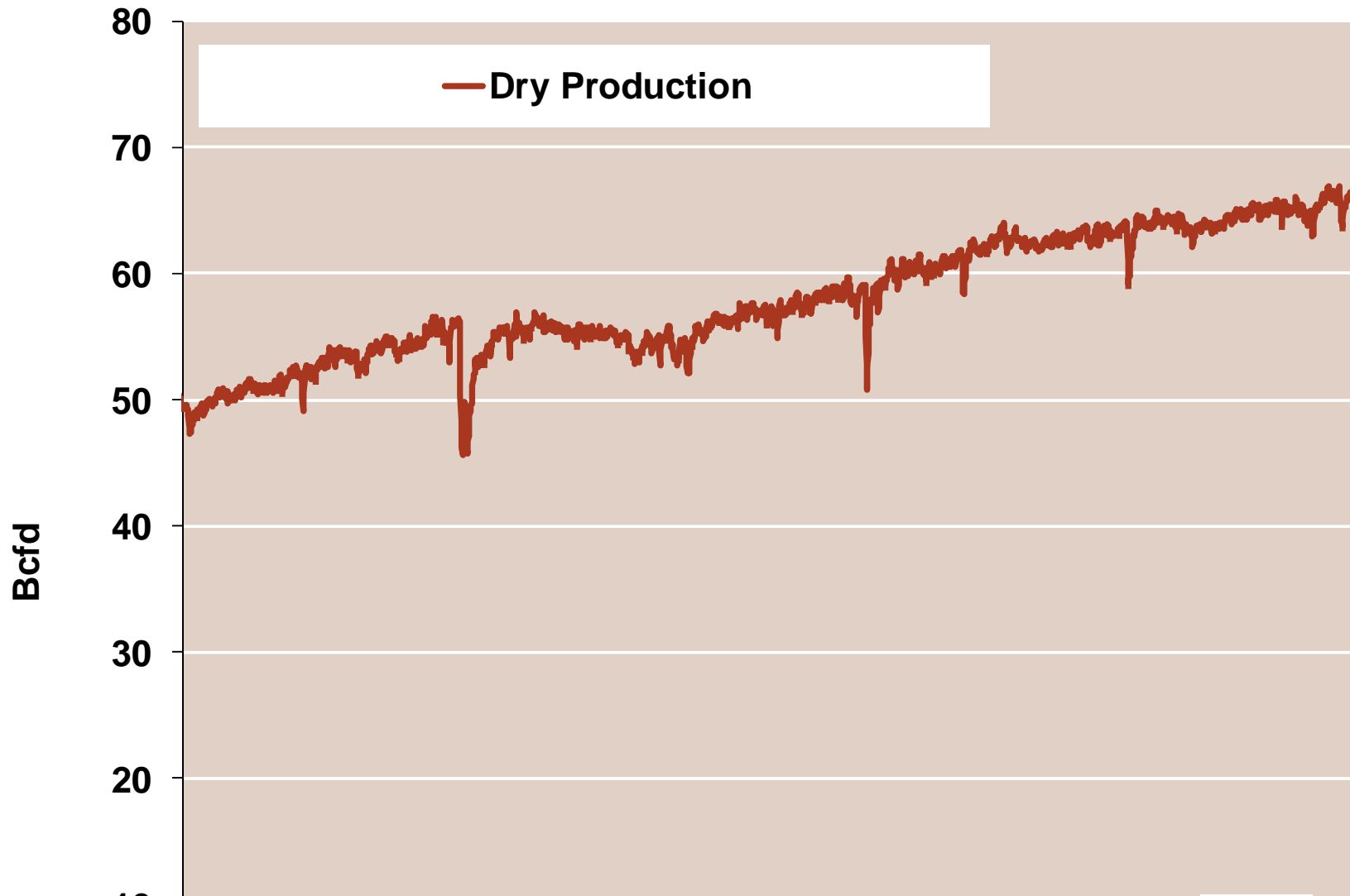
Notes:

Source: Derived from Bloomberg Data

Updated Mar-16



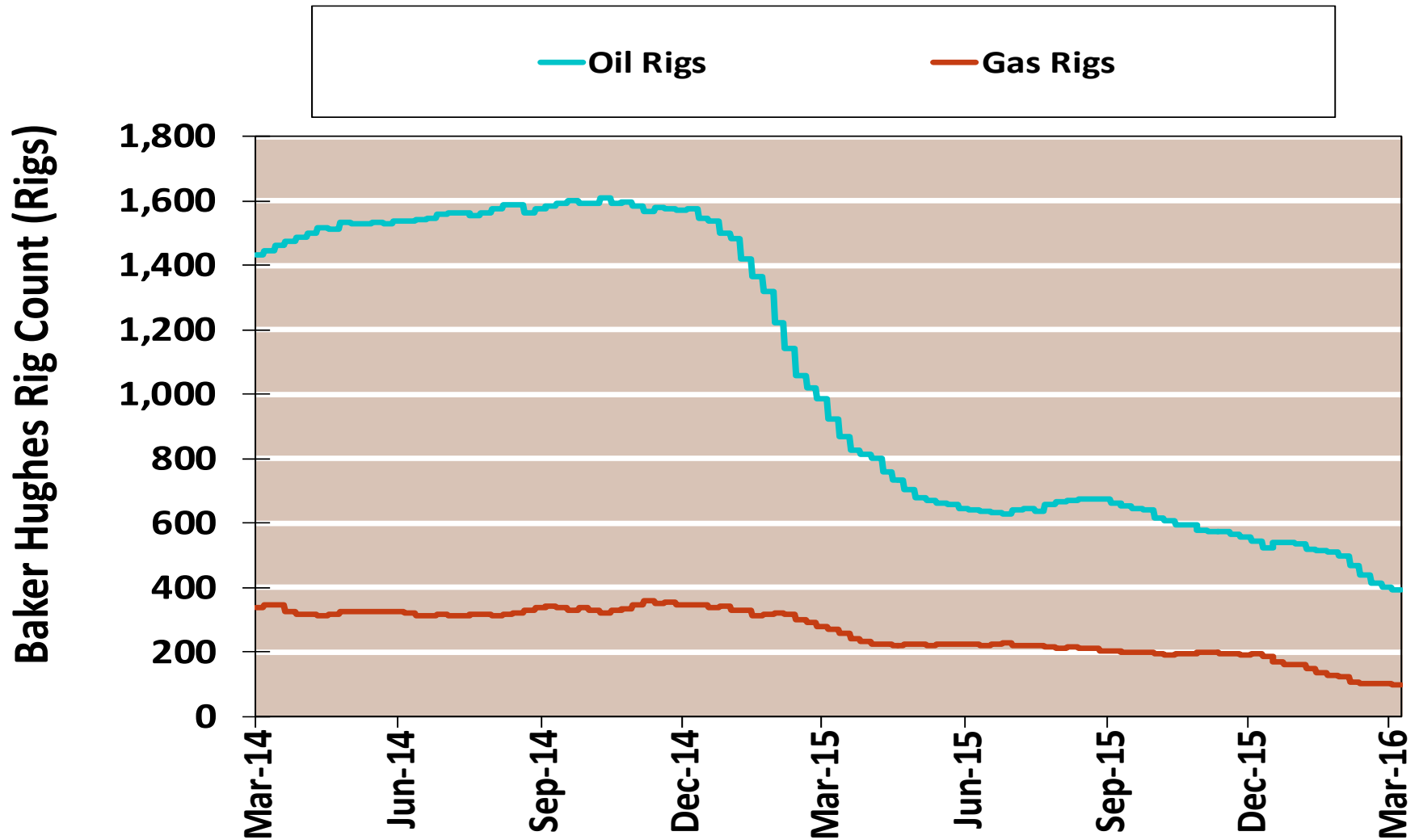
## Monthly U.S. Dry Gas Production – Lower 48 States



Updated: Mar-16

Note: Prior to July 2010, chart was derived from a combination of *EIA* and *Bentek Energy* data  
Source: Derived from *Bentek Energy* data

## NG Rigs by Fuel Type



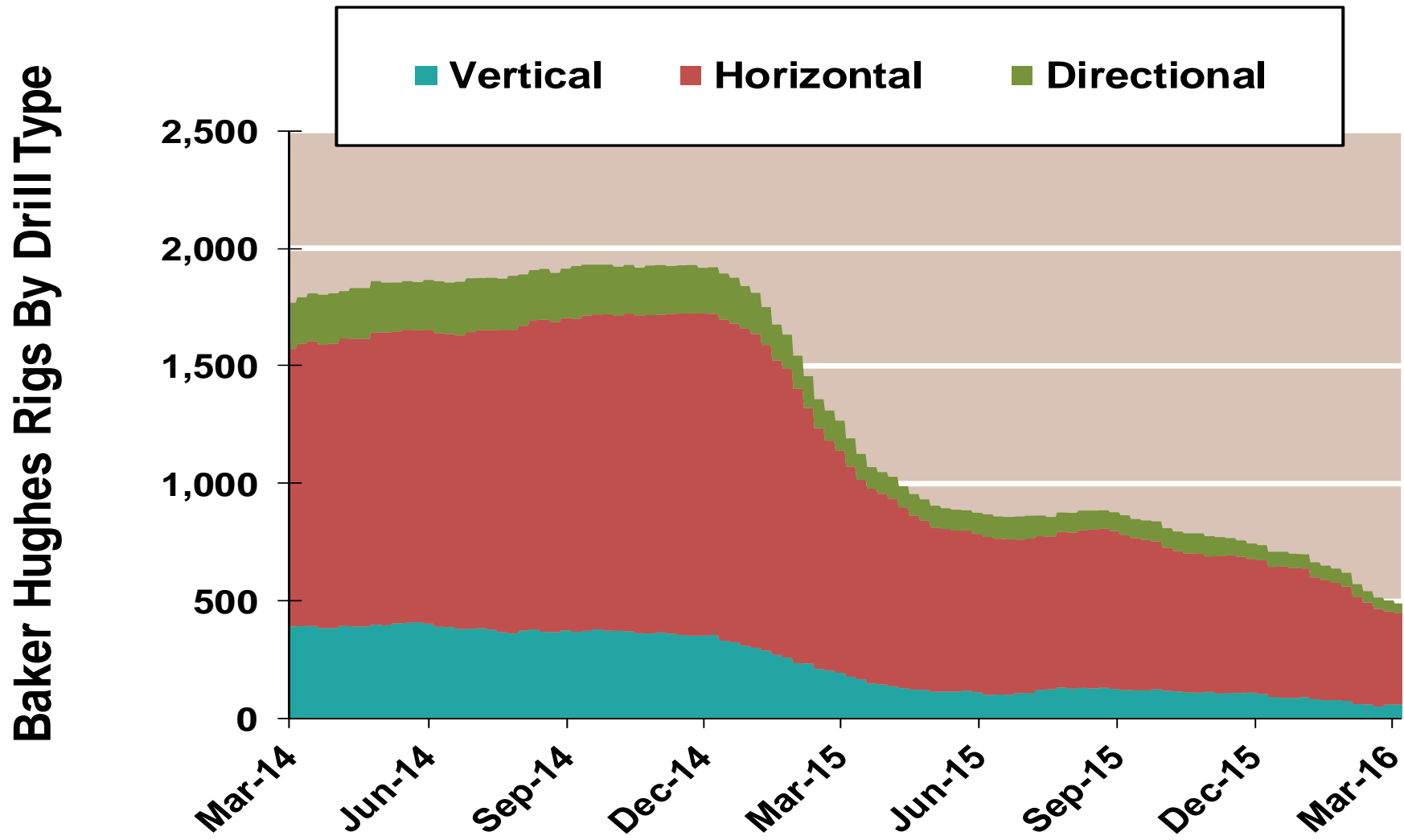
Notes:

Source: Derived from Bloomberg data

Updated

Mar-16

## NG Rig by Direction

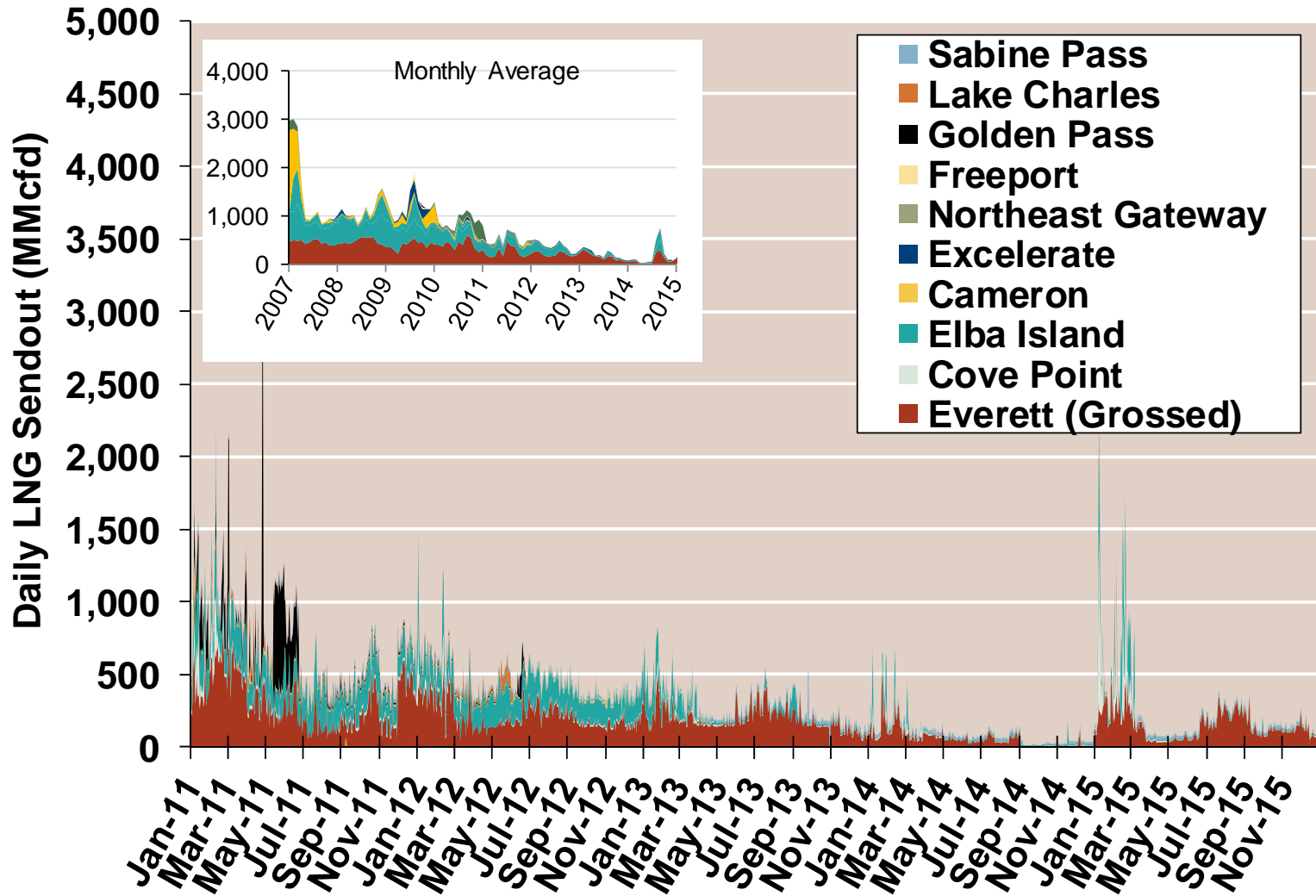


Notes:

Source: Derived from Bloomberg data

Updated Mar-16

## Daily Gas Sendout from Existing U.S. LNG Facilities



Notes: Everett data includes flows onto the AGT and TGP interstate lines, plus estimates of flows to the Mystic 7 power plant, Keyspan Boston Gas, and LNG trucked out of the terminal. Excludes flows to the Freeport LNG which flows via intrastate pipelines and flows to the Mystic 8 and 9 power plants.

Source: Derived from *Bentek Energy* data

Updated:

February 2016

1

## World LNG Estimated Landed Prices: Jan-16



Source: Waterborne Energy, Inc. Data in \$US/MMBtu

Note: Includes information and Data supplied by IHS Global Inc. and its affiliates ("IHS"); Copyright (publication year) all rights reserved. Landed prices are the monthly average of weekly trades from the prior month.

Updated Apr-2016