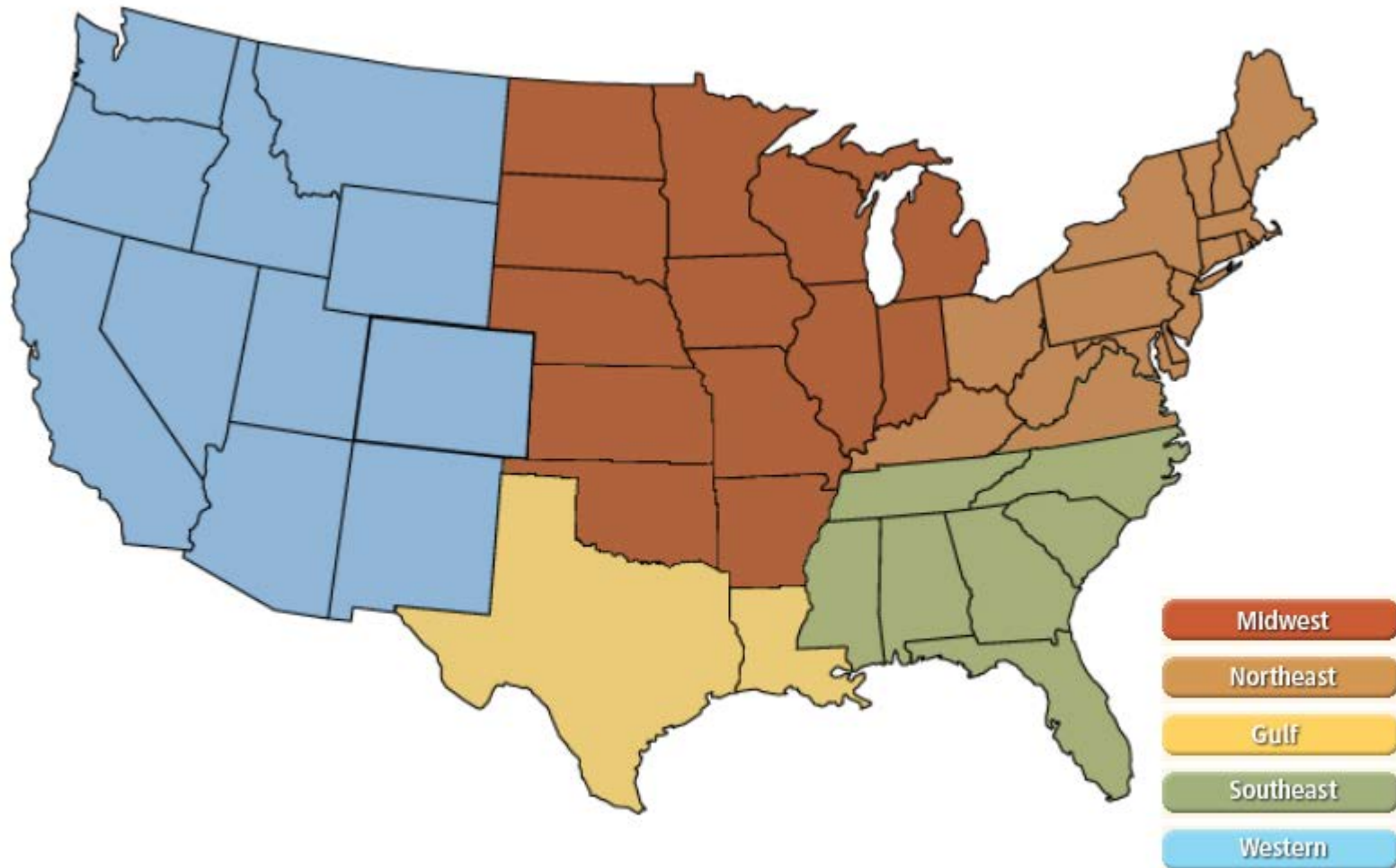
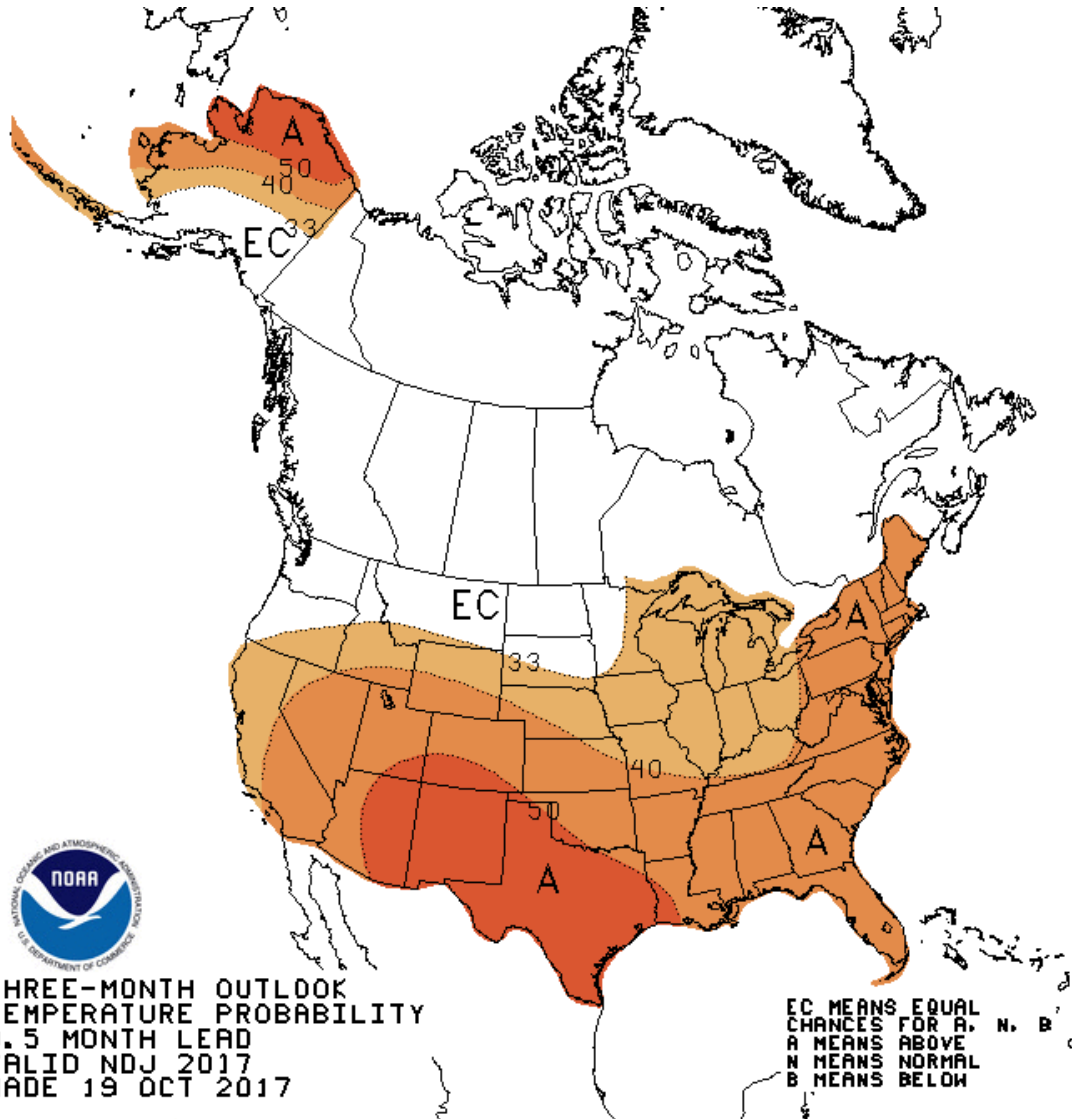


National

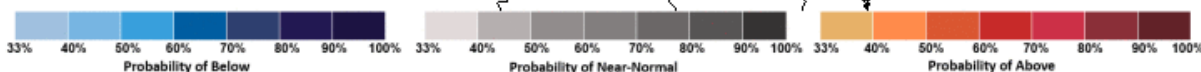


NOAA 3 Month Outlook



THREE-MONTH OUTLOOK
 TEMPERATURE PROBABILITY
 0.5 MONTH LEAD
 VALID NDJ 2017
 MADE 19 OCT 2017

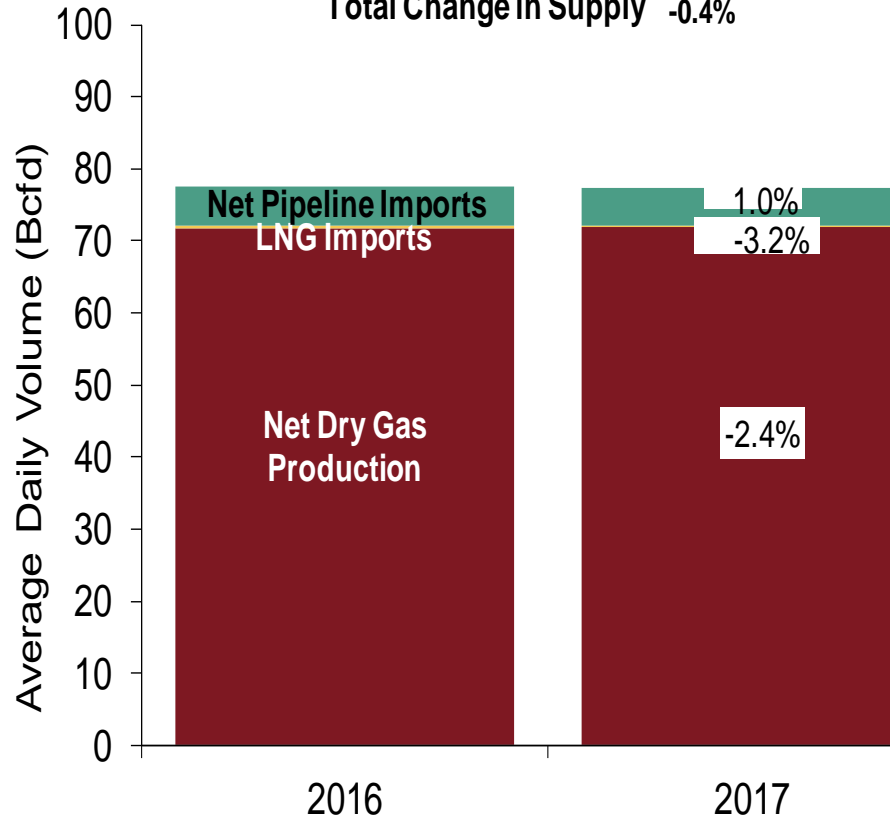
EC MEANS EQUAL CHANCES FOR A, N, B
 A MEANS ABOVE
 N MEANS NORMAL
 B MEANS BELOW



U.S. NG Supply and Demand Oct-16 YTD vs. Oct-17 YTD

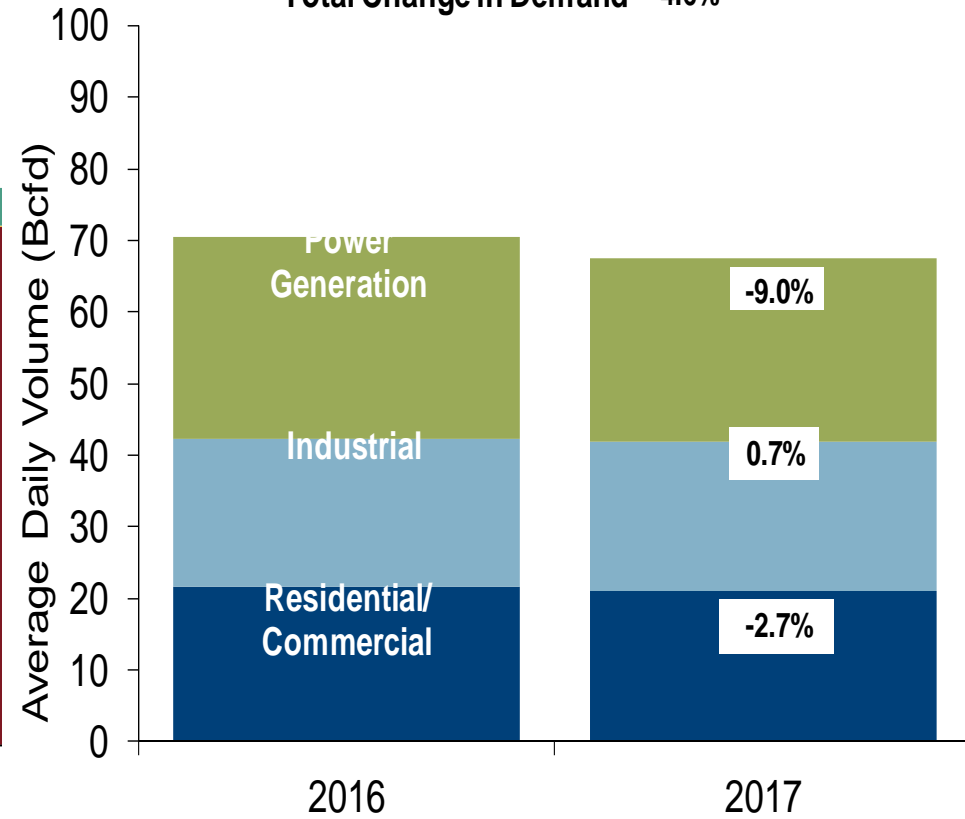
US Natural Gas Supply

Total Change in Supply -0.4%



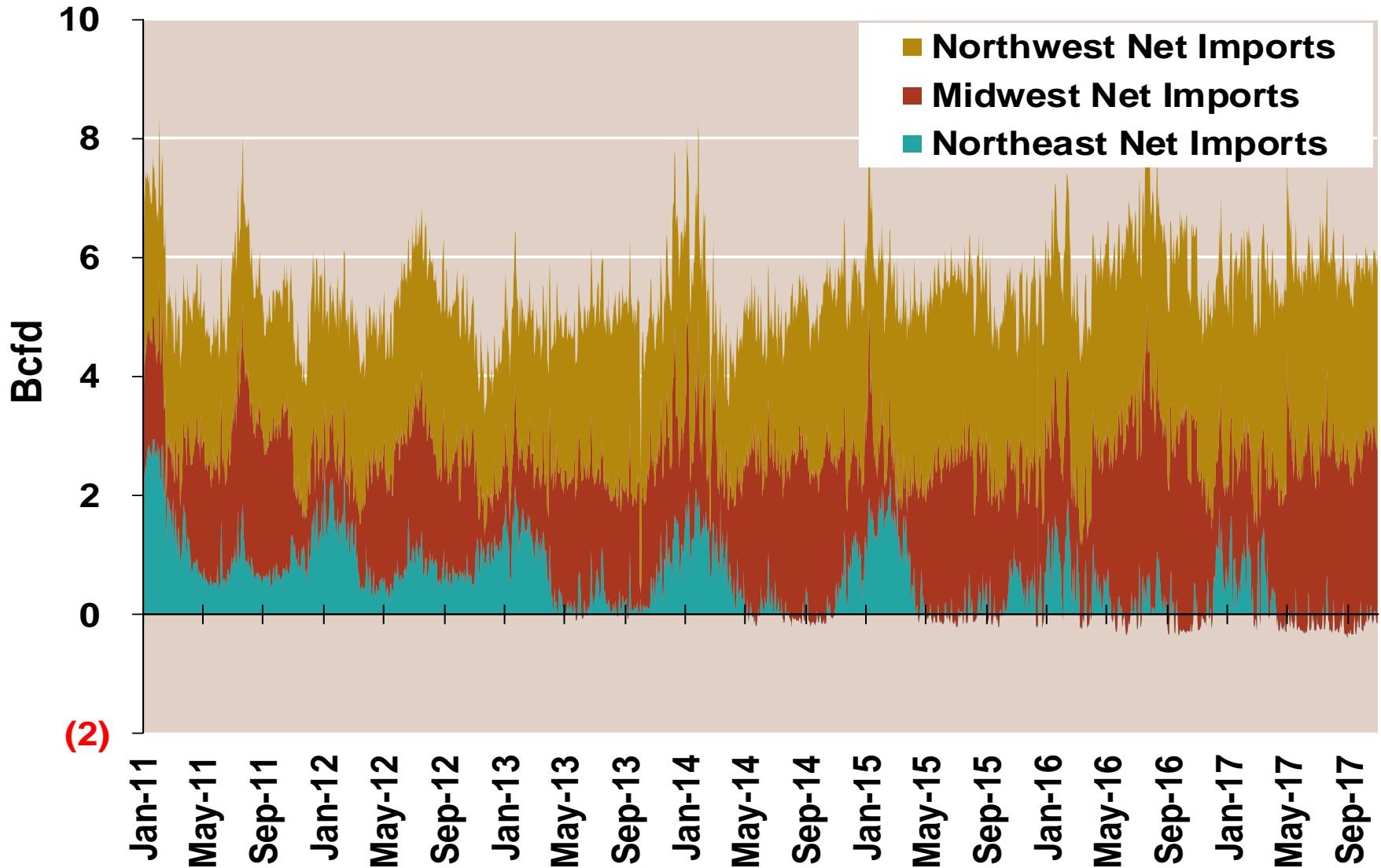
US Natural Gas Demand

Total Change in Demand -4.6%

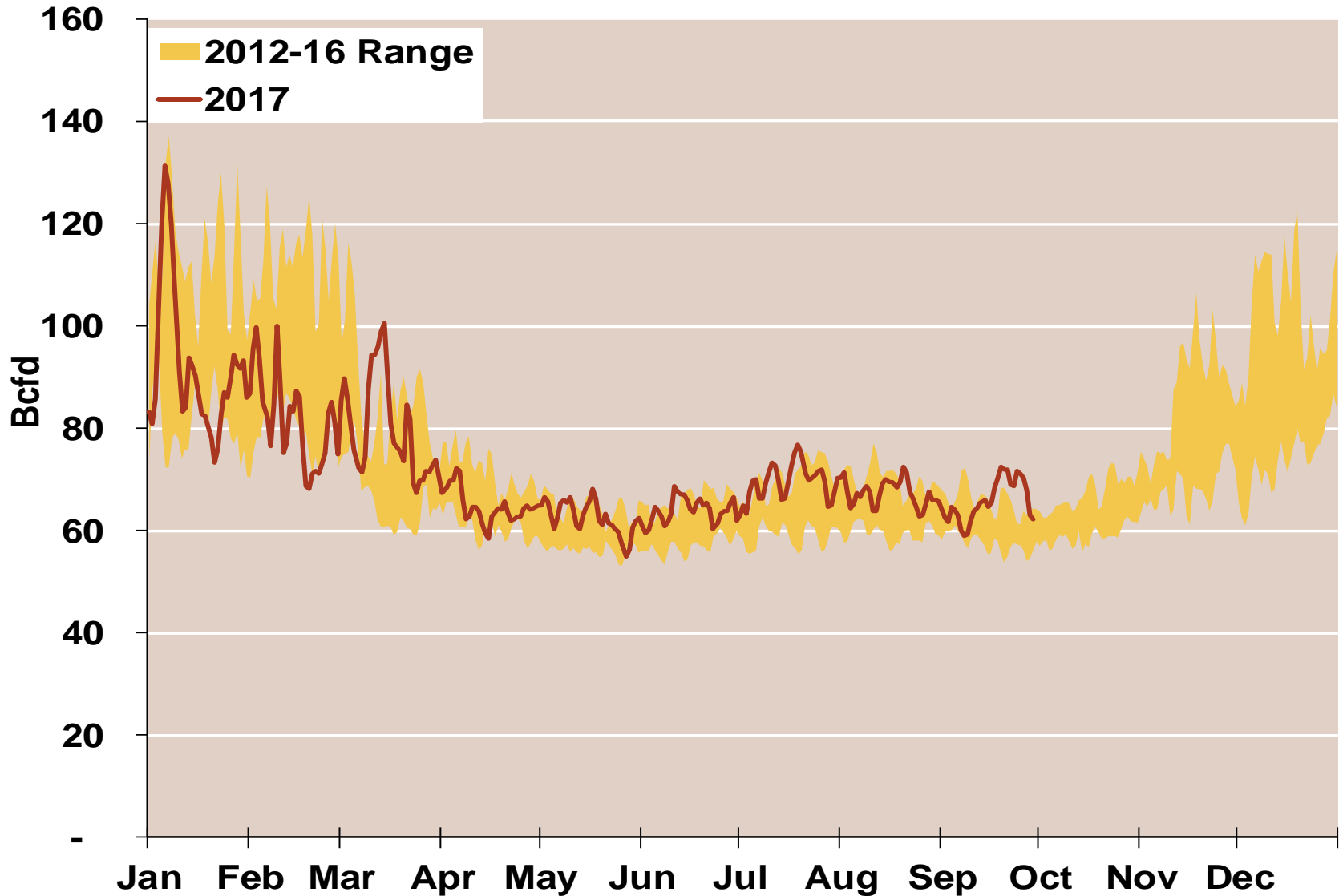


Note: Balance includes all amounts not attributable to other categories.
Source: Derived from *Bentek Energy* data

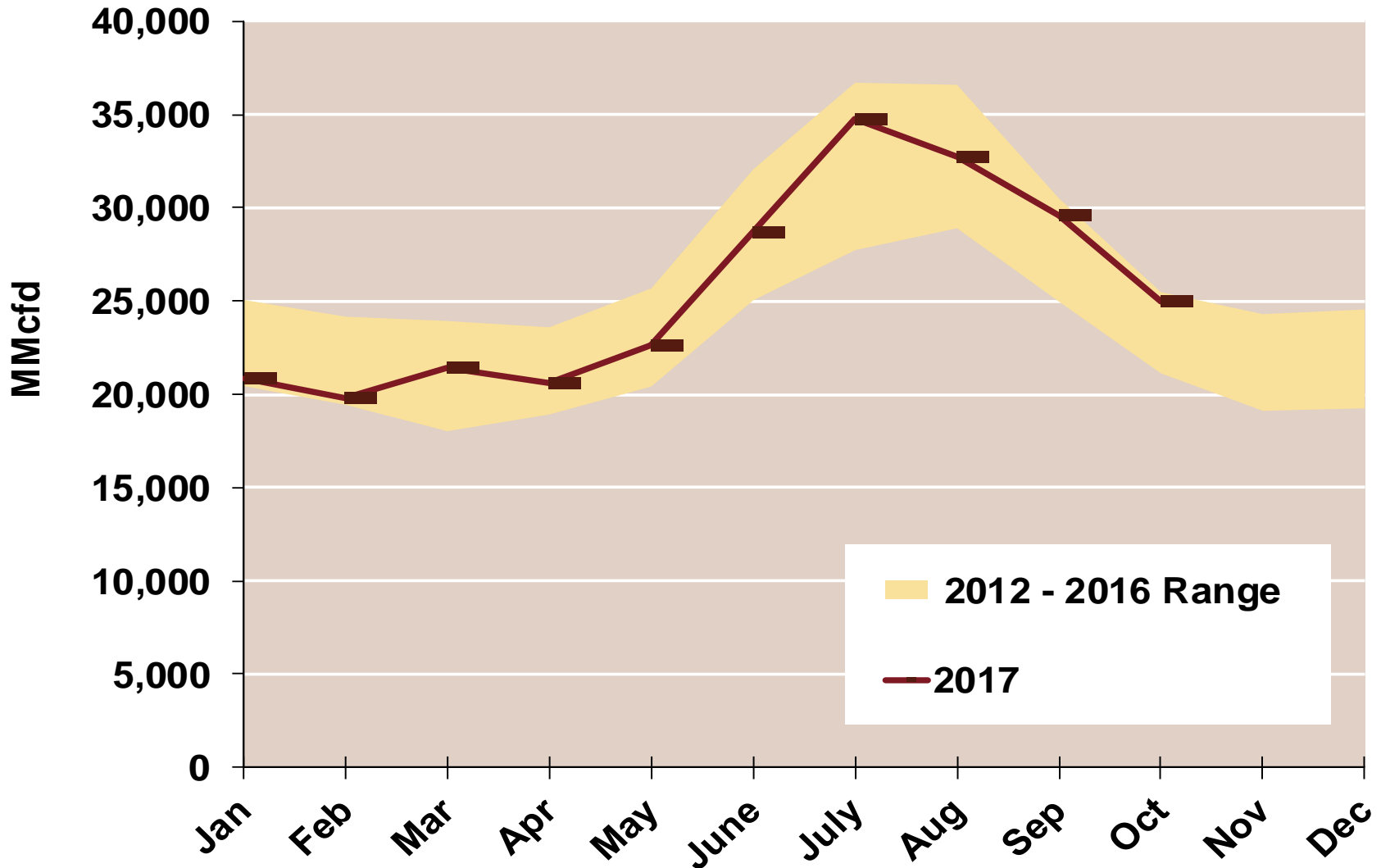
Regional Canadian Imports



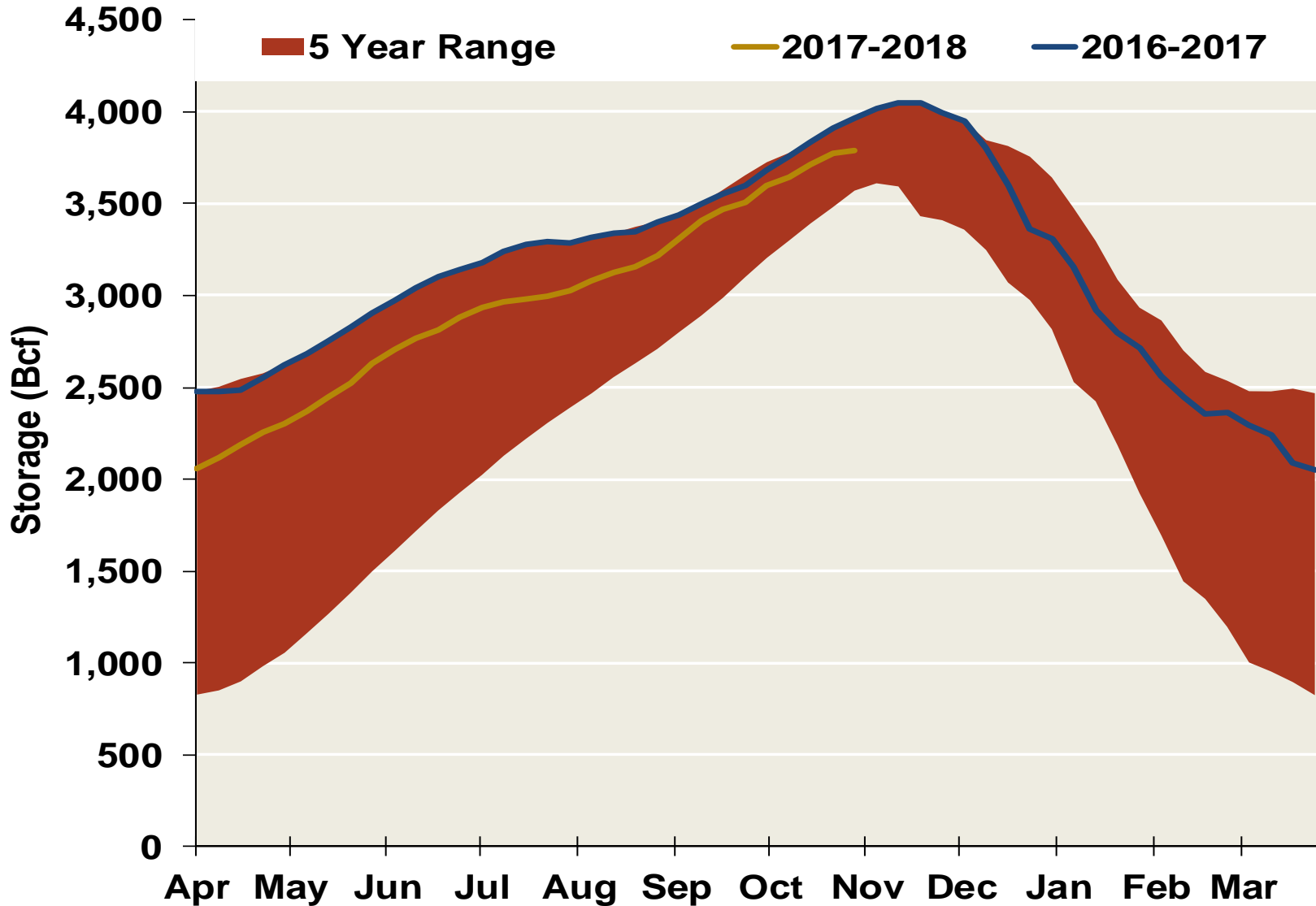
Total U.S. Natural Gas Demand All Sectors



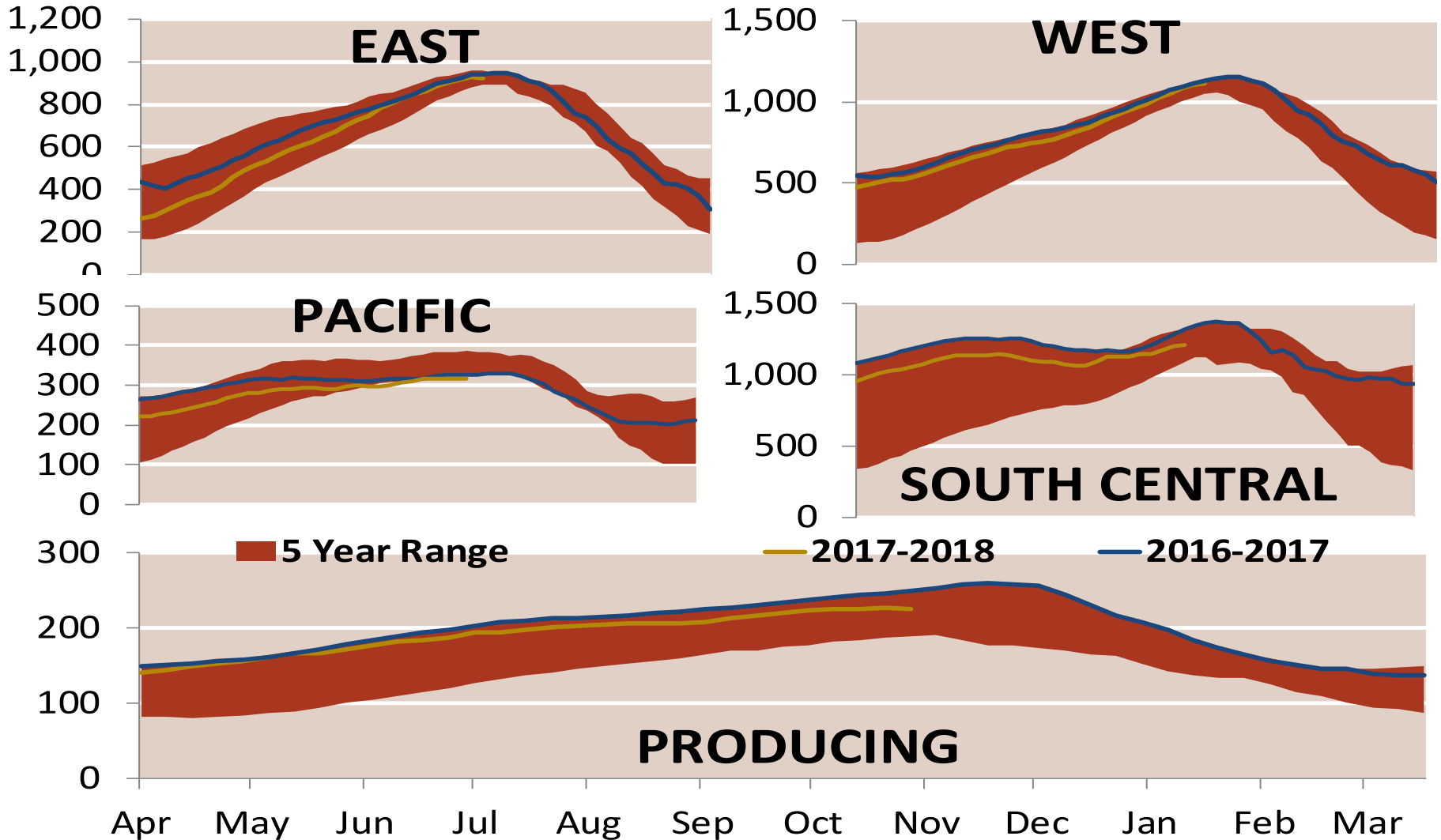
U.S. Natural Gas Consumption for Power Generation



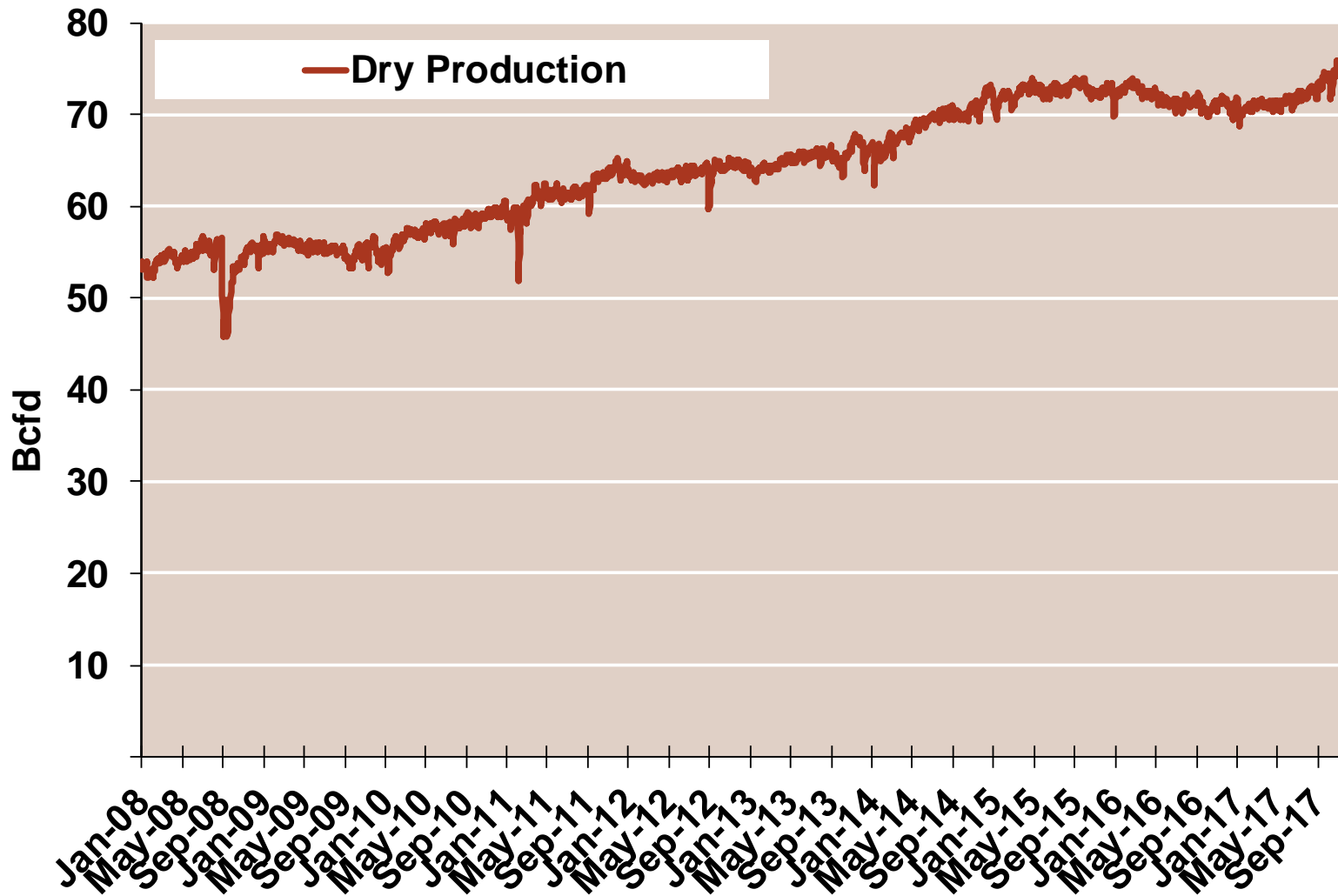
EIA Storage Inventories



EIA Storage Inventories

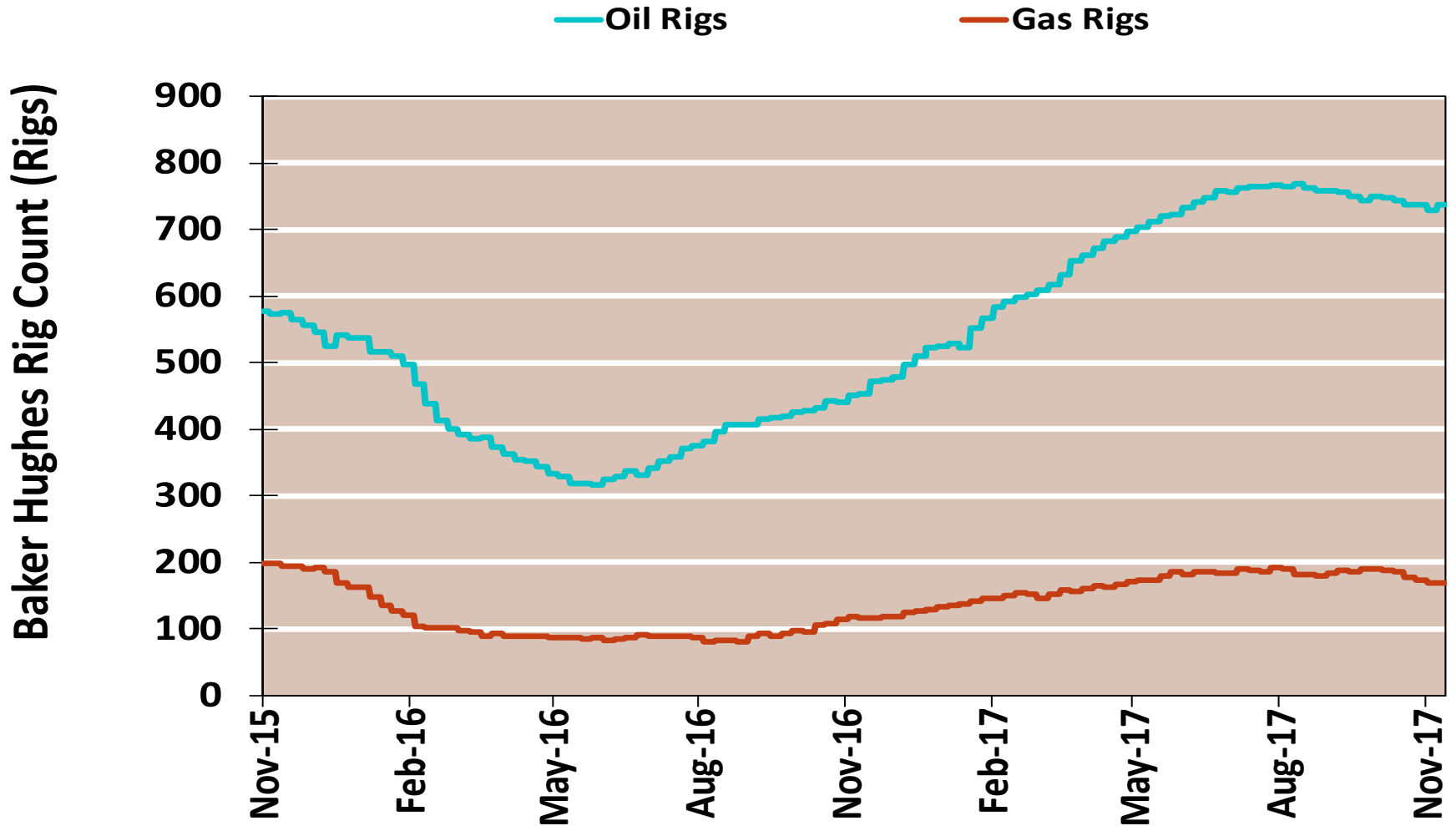


Monthly U.S. Dry Gas Production – Lower 48 States



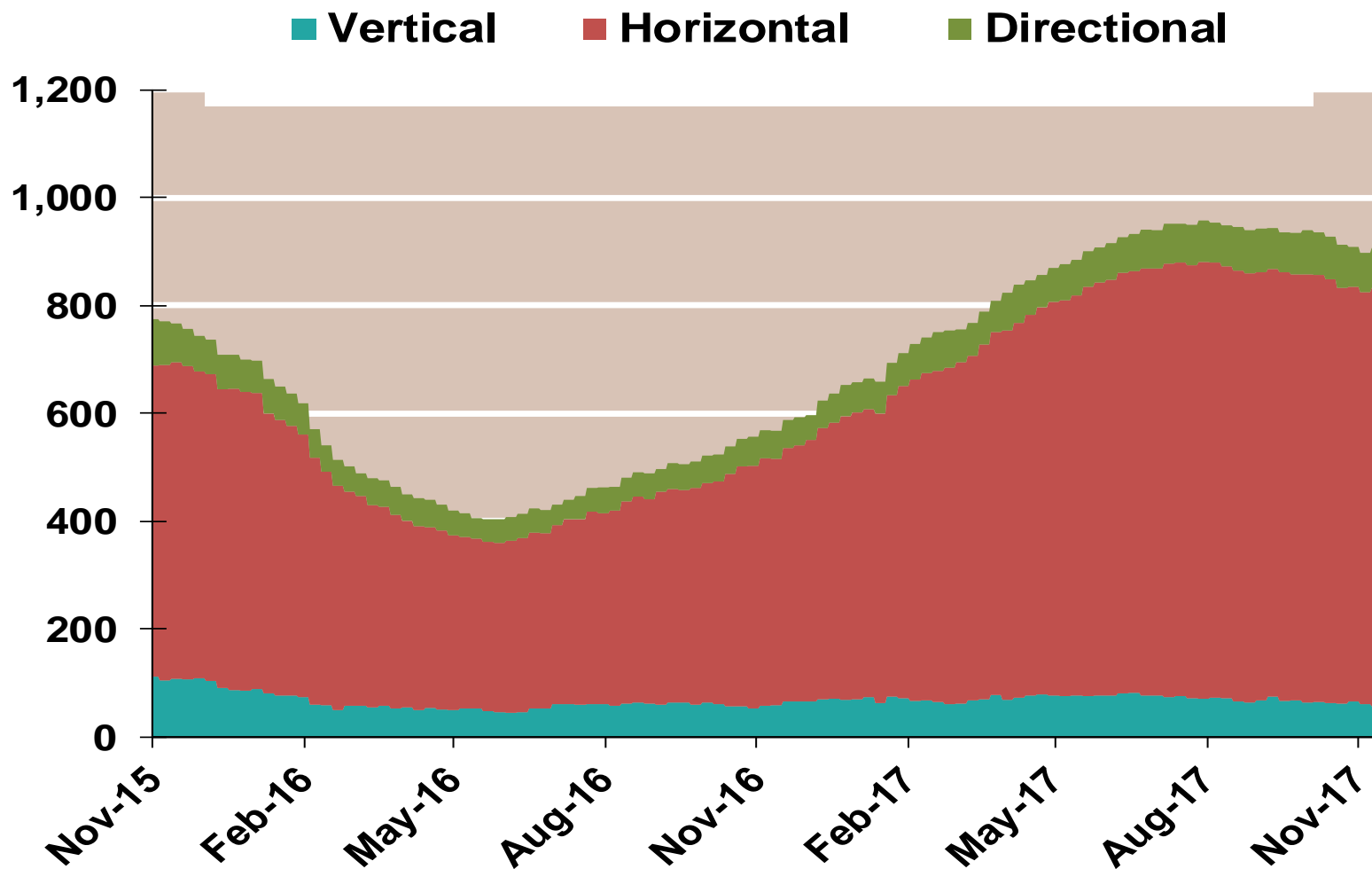
Note: Prior to July 2010, chart was derived from a combination of EIA and Bentek Energy data
Source: Derived from Bentek Energy data

NG Rigs by Fuel Type

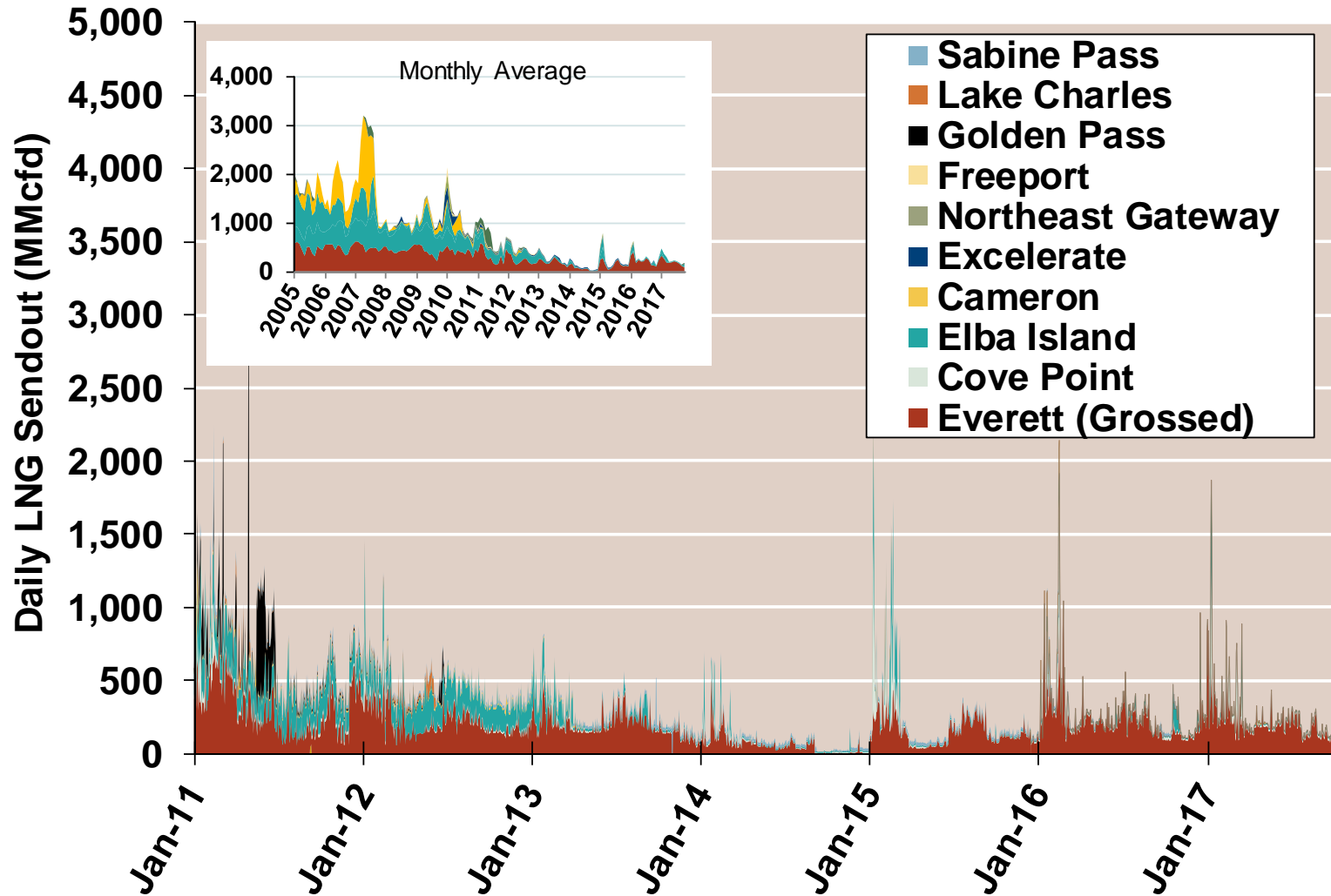


NG Rig by Direction

Baker Hughes Rigs By Drill Type

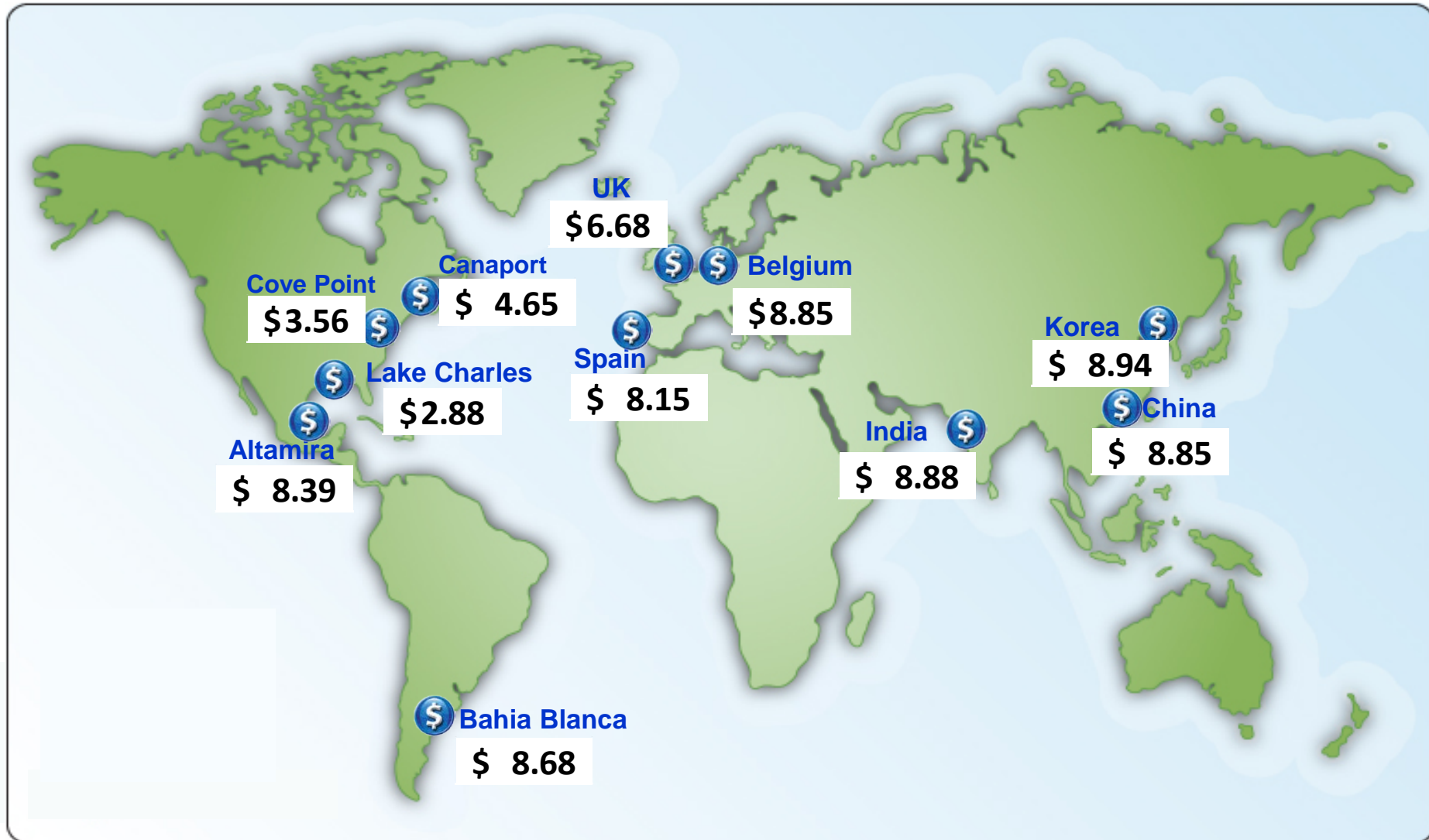


Daily Gas Sendout from Existing U.S. LNG Facilities



Notes: Everett data includes flows onto the AGT and TGP interstate lines, plus estimates of flows to the Mystic 7 power plant, Keyspan Boston Gas, and LNG trucked out of the terminal. Excludes flows to the Freeport LNG which flows via intrastate pipelines and flows to the Mystic 8 and 9 power plants.

World LNG Estimated Landed Prices: Oct-17



Source: Waterborne Energy, Inc. Data in \$US/MMBtu.

Note: Includes information and Data supplied by IHS Global Inc. and its affiliates ("IHS"); Copyright (publication year) all rights reserved. Prices are the monthly average of the weekly landed prices for the listed month. Landed prices are based on a netback calculation.

Updated: Nov-17