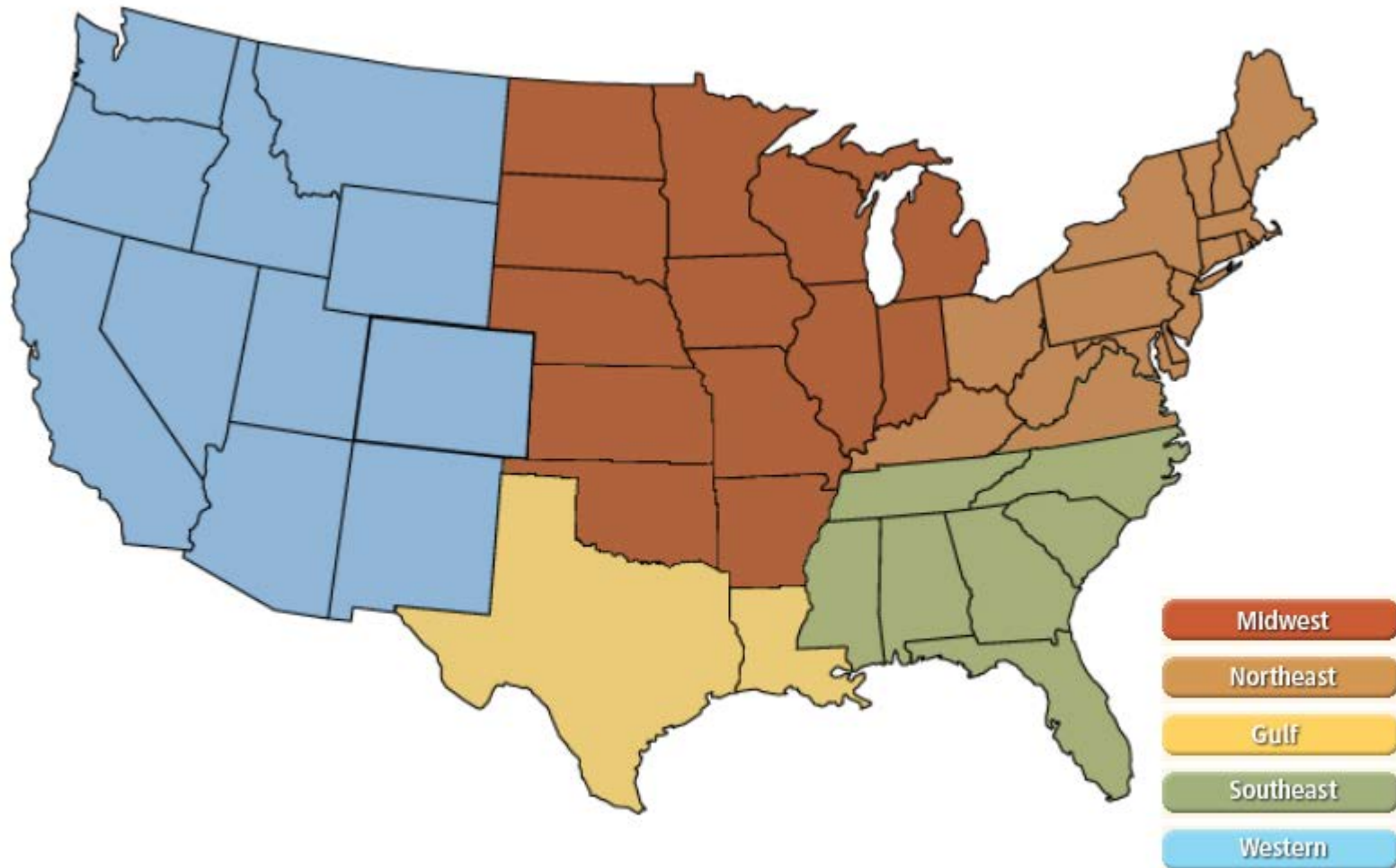
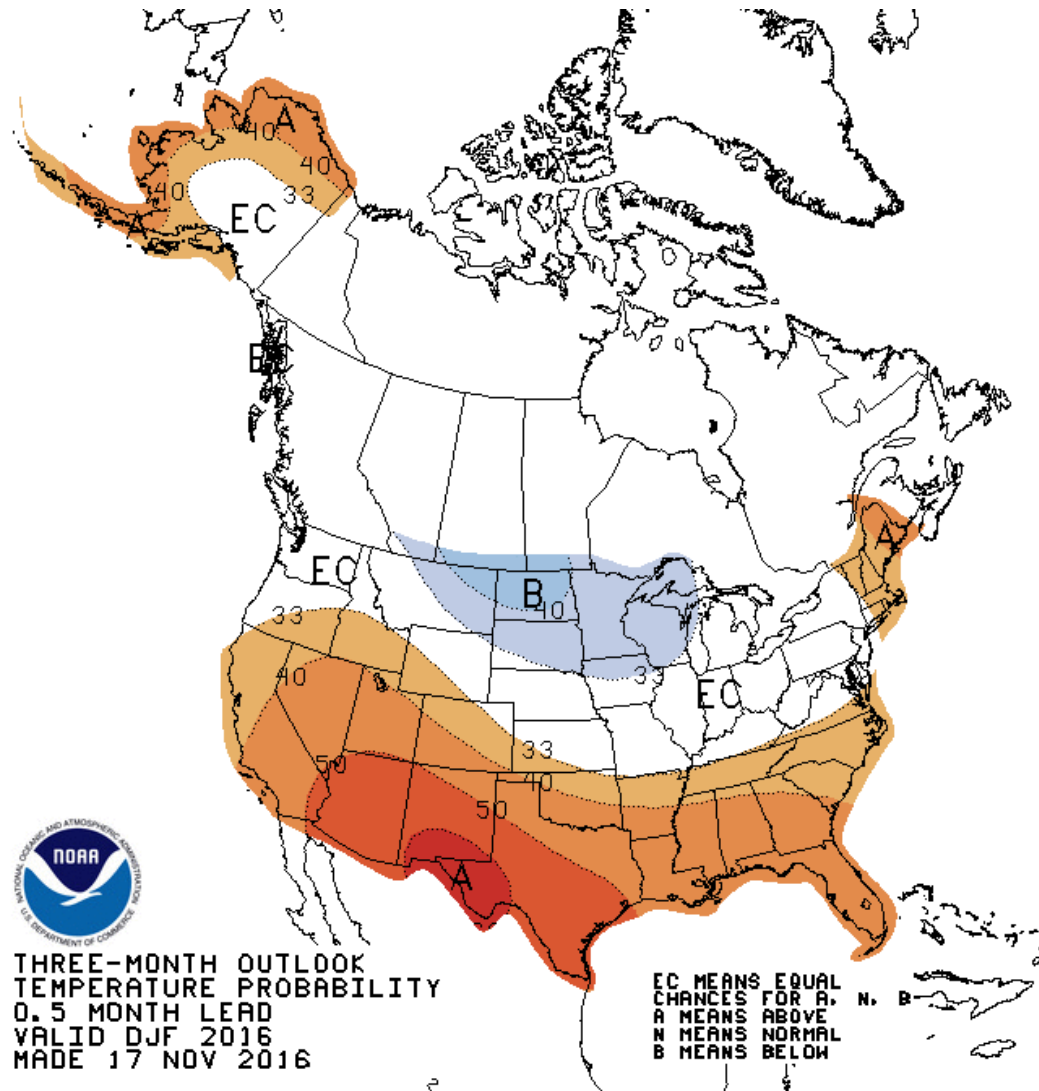


National



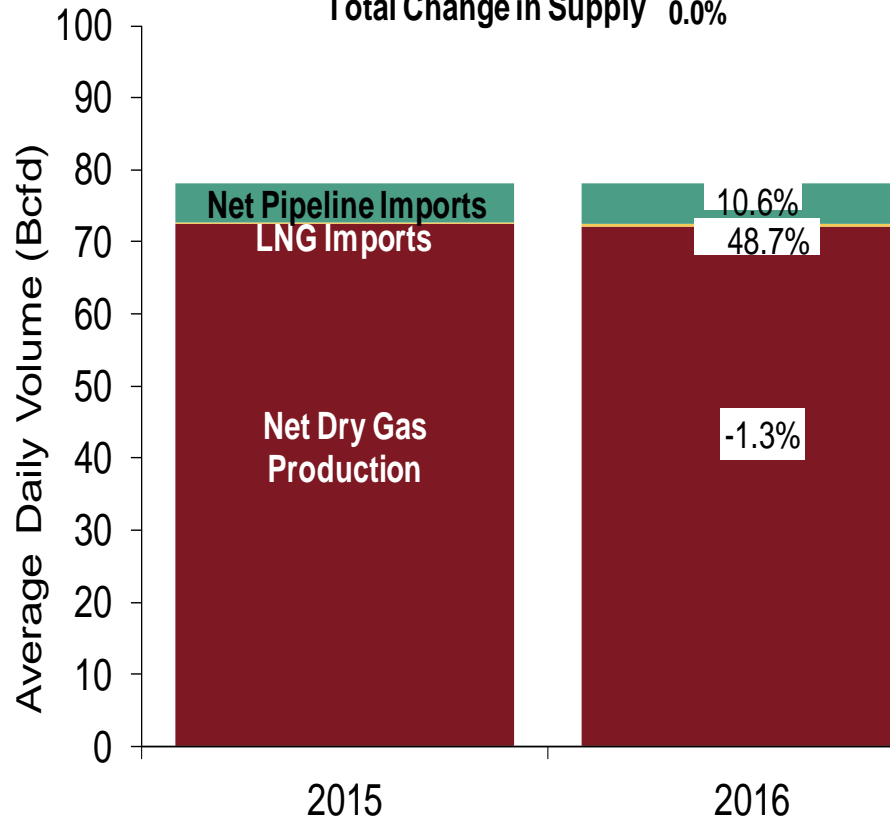
NOAA 3 Month Outlook



U.S. NG Supply and Demand Oct-15 YTD vs. Oct-16 YTD

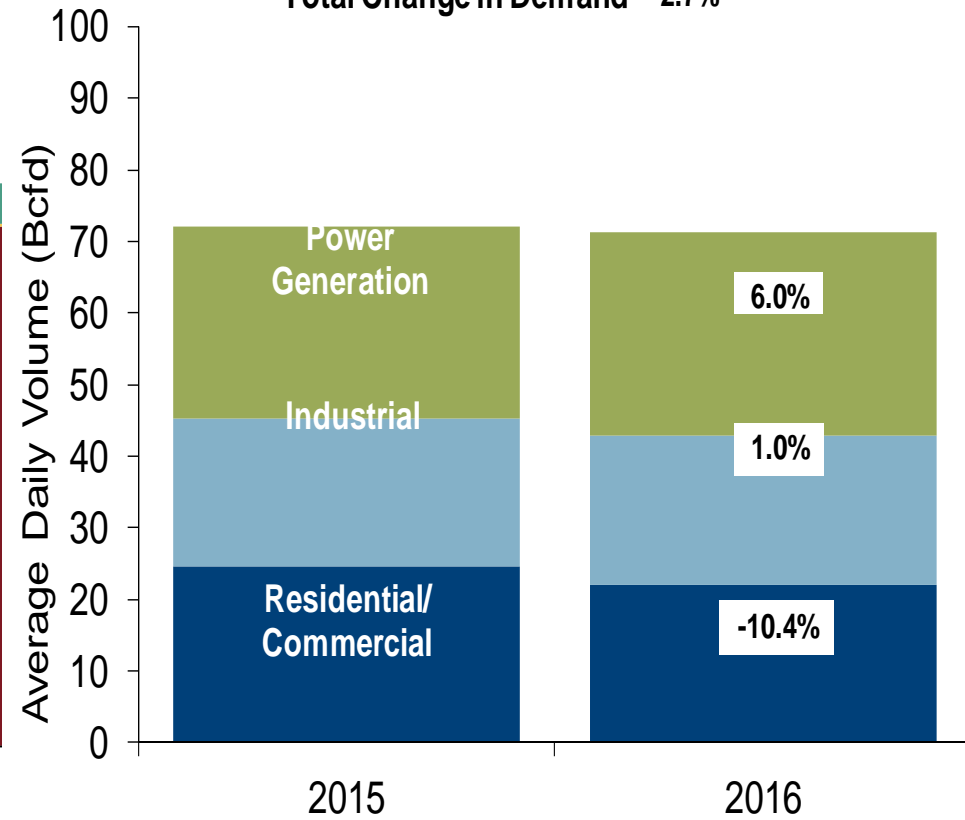
US Natural Gas Supply

Total Change in Supply 0.0%



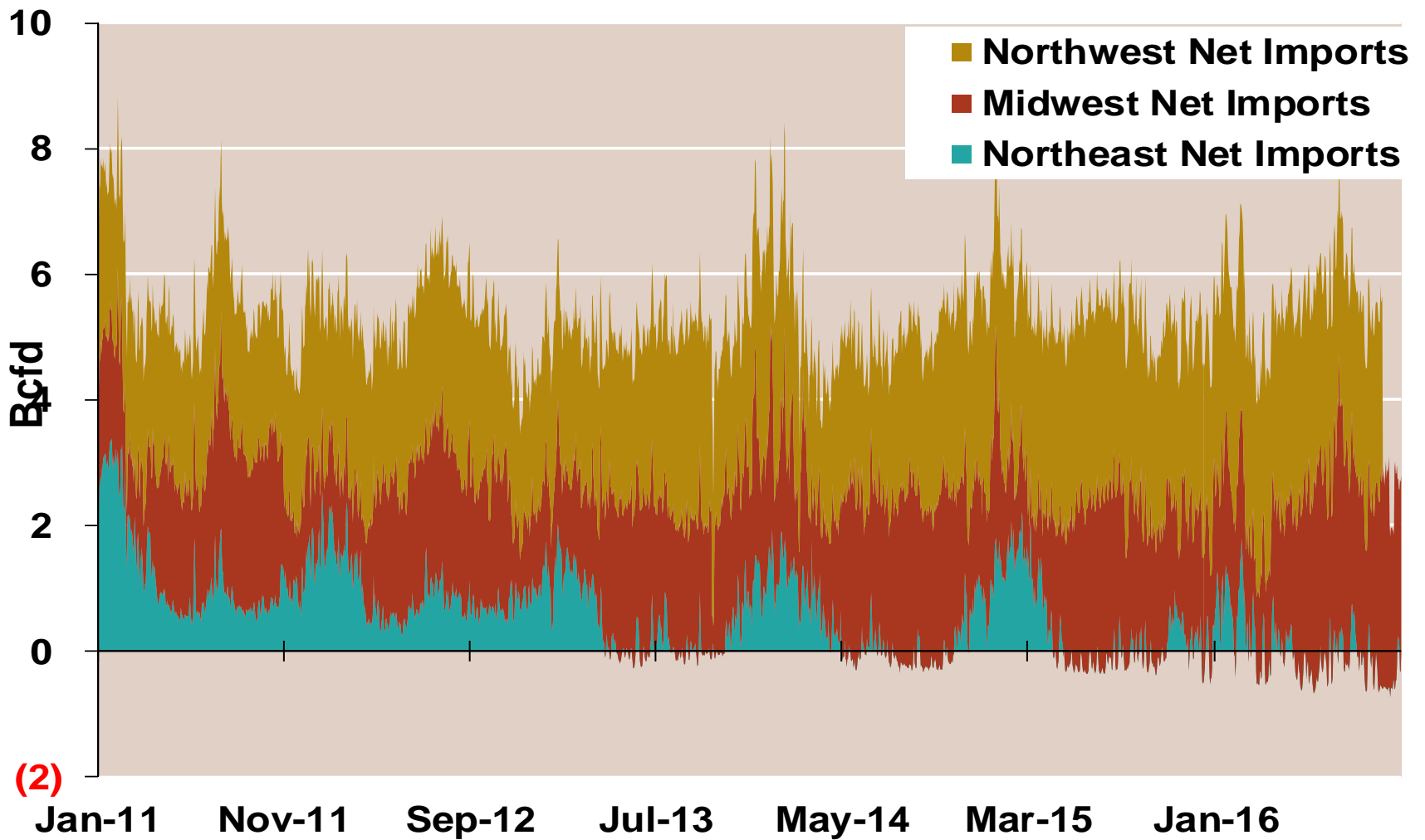
US Natural Gas Demand

Total Change in Demand -2.7%

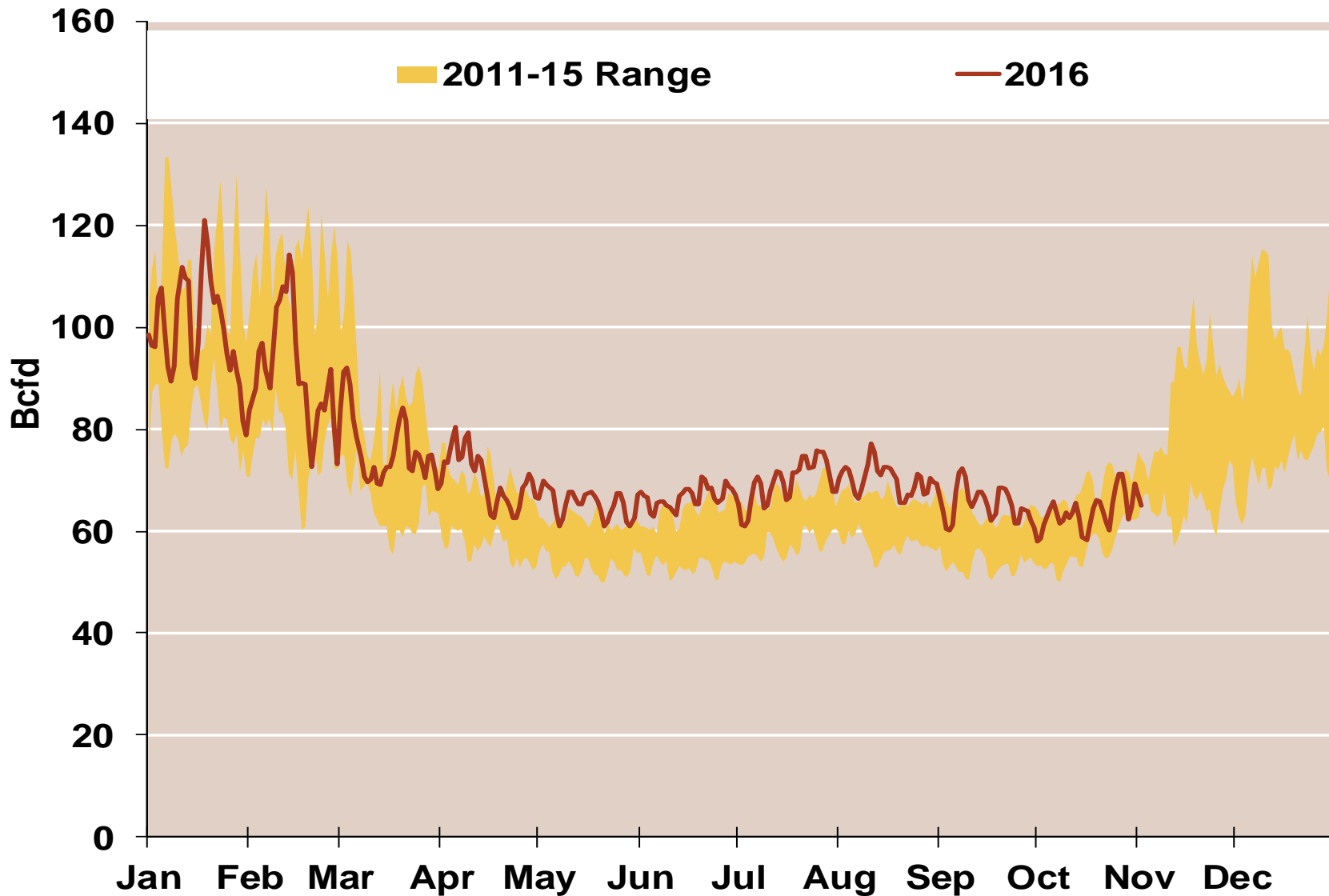


Note: Balance includes all amounts not attributable to other categories.
Source: Derived from *Bentek Energy* data

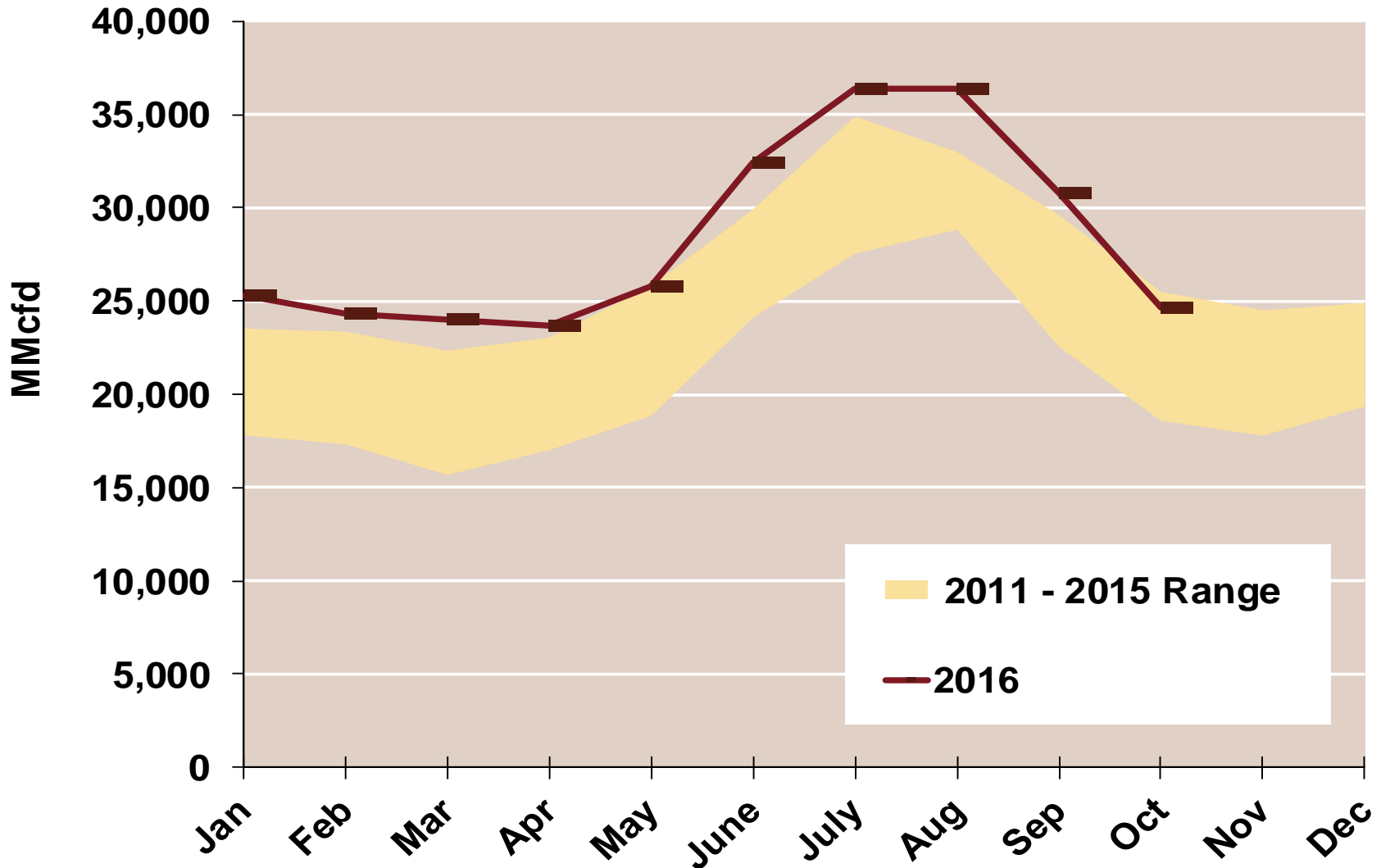
Regional Canadian Imports



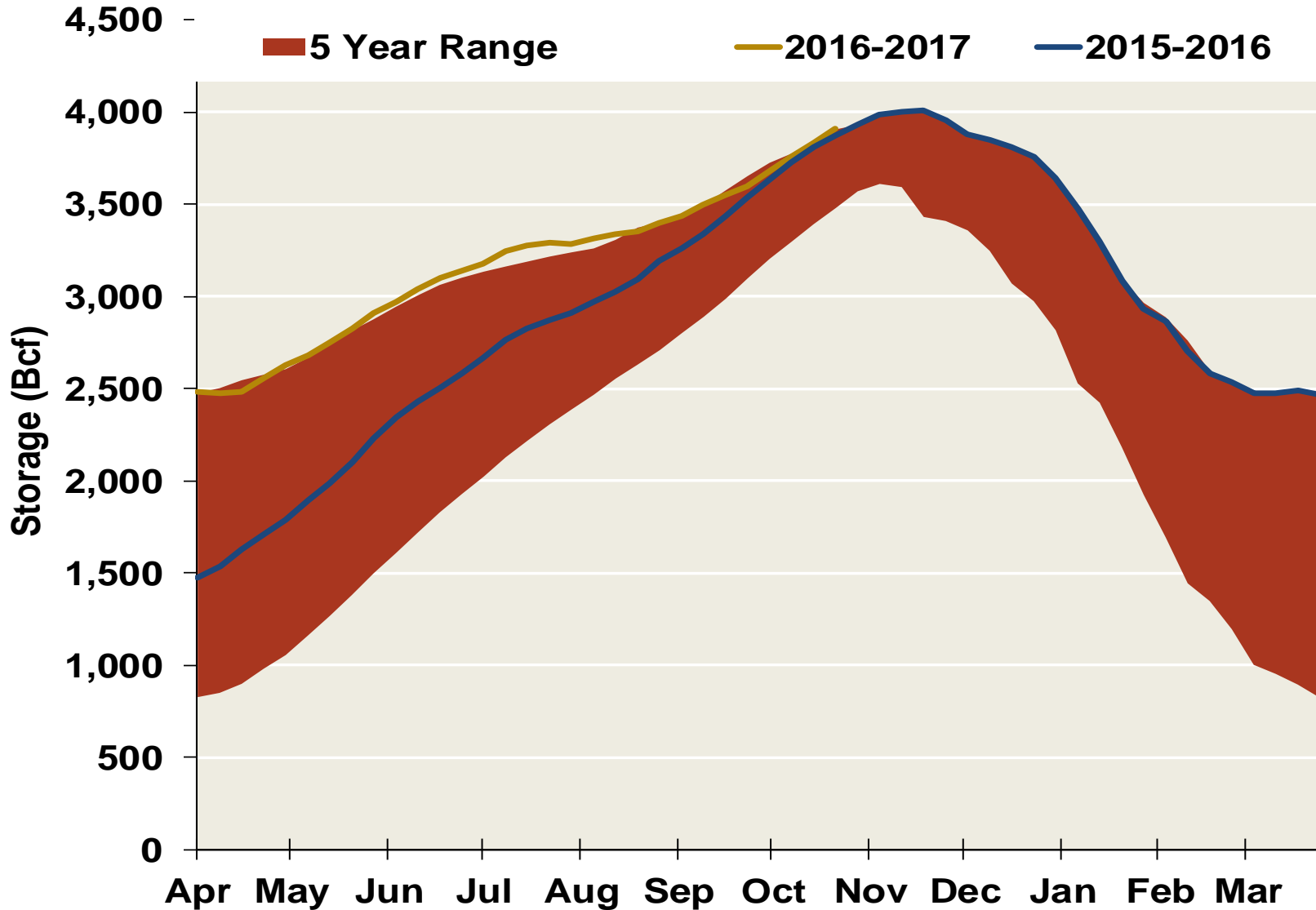
Total U.S. Natural Gas Demand All Sectors



U.S. Natural Gas Consumption for Power Generation



EIA Storage Inventories



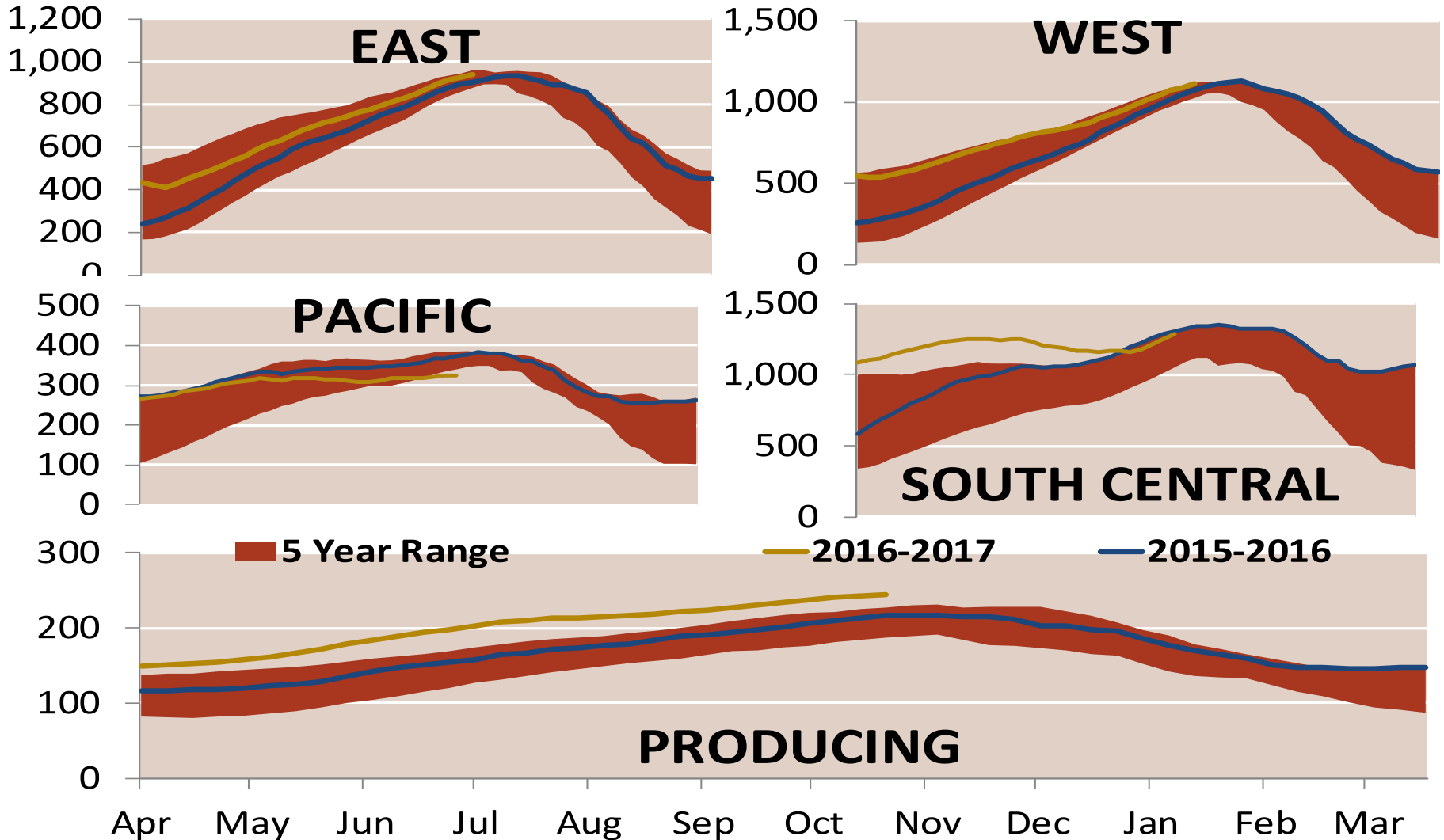
Notes.

Source: Derived from Bloomberg Data

Updated

Nov-16

EIA Storage Inventories



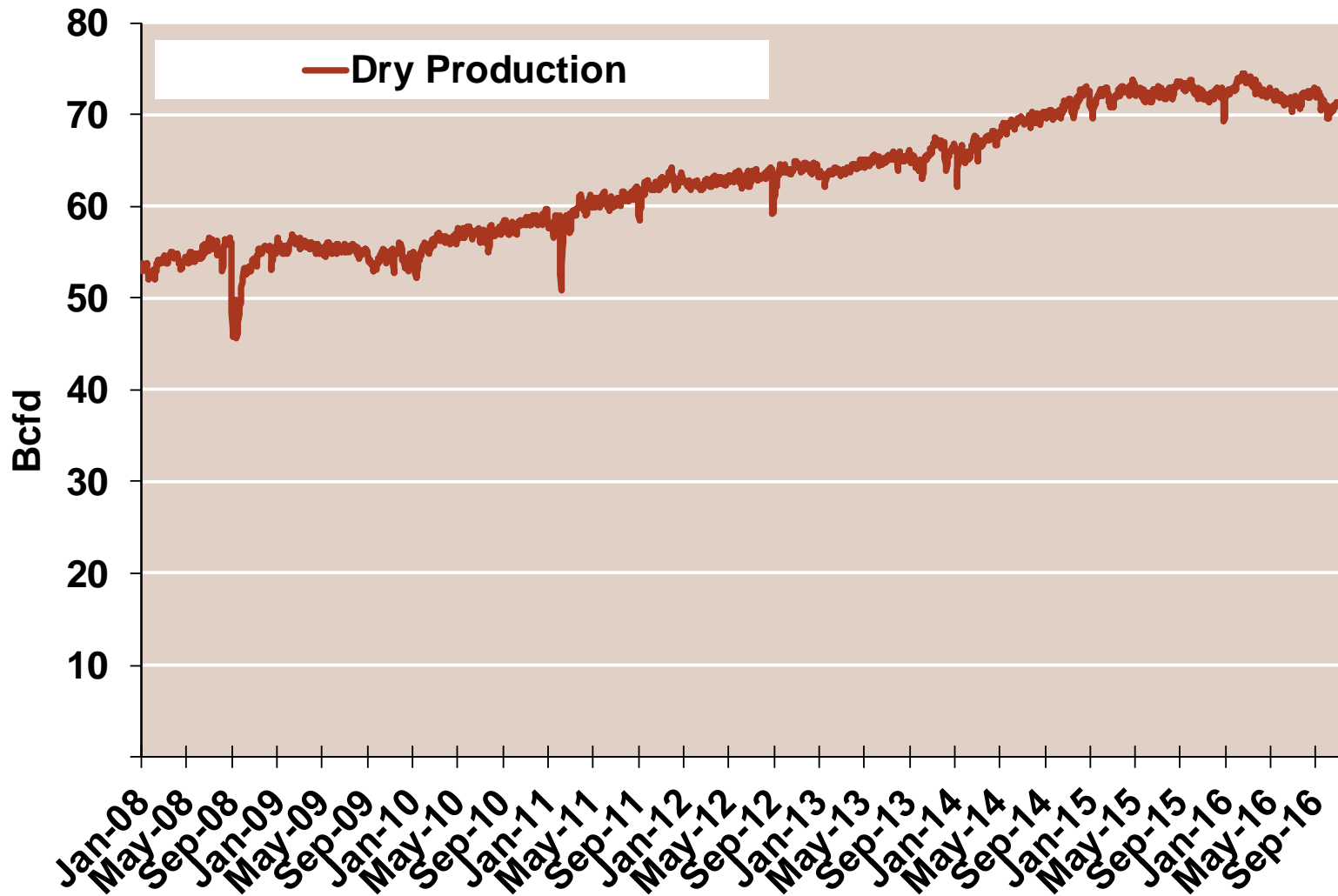
Notes:

Source: Derived from Bloomberg Data

Updated

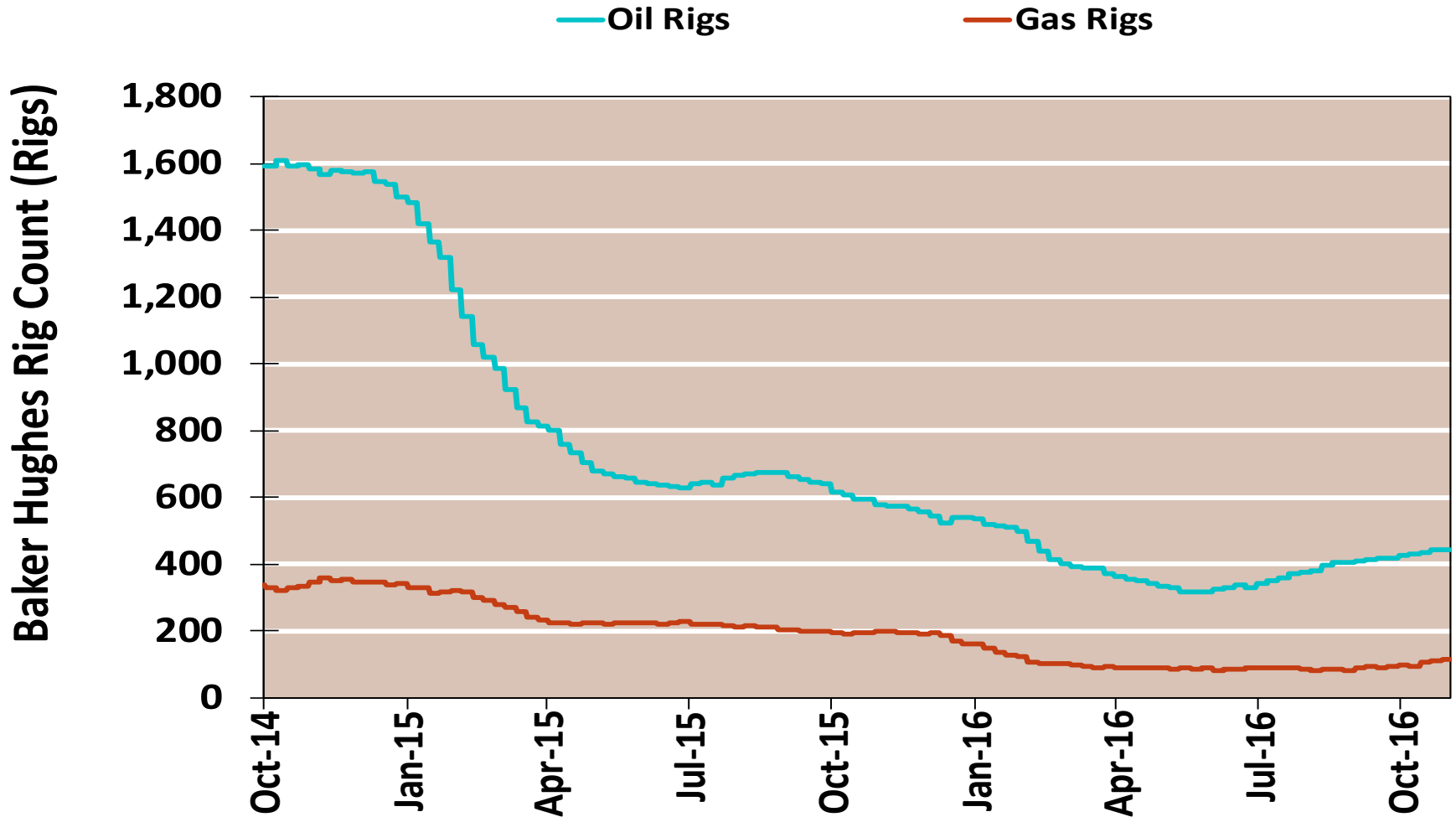
Nov-16

Monthly U.S. Dry Gas Production – Lower 48 States



Note: Prior to July 2010, chart was derived from a combination of EIA and Bentek Energy data
Source: Derived from Bentek Energy data

NG Rigs by Fuel Type



Notes:

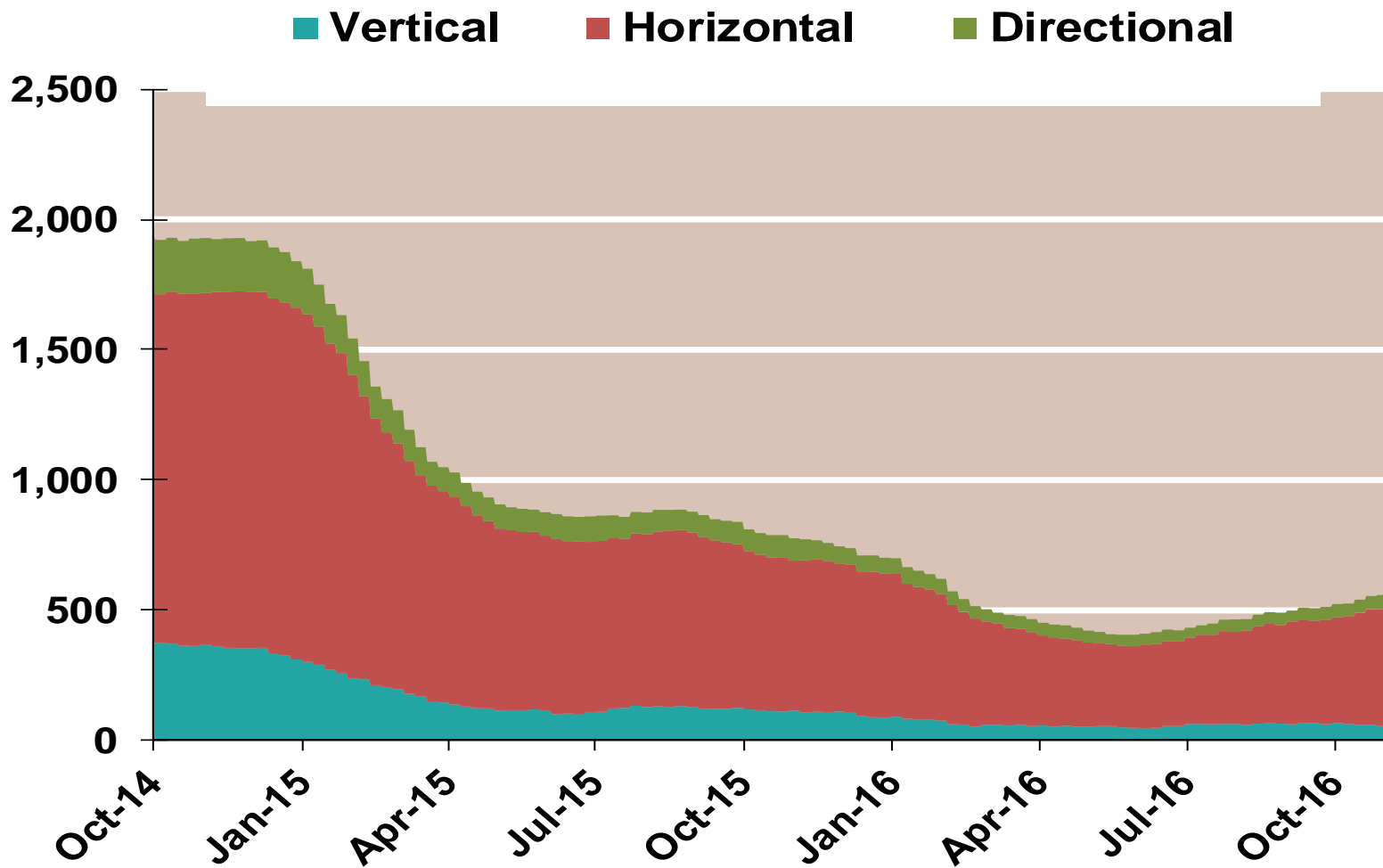
Source: Derived from Bloomberg data

Updated

Nov-16

NG Rig by Direction

Baker Hughes Rigs By Drill Type



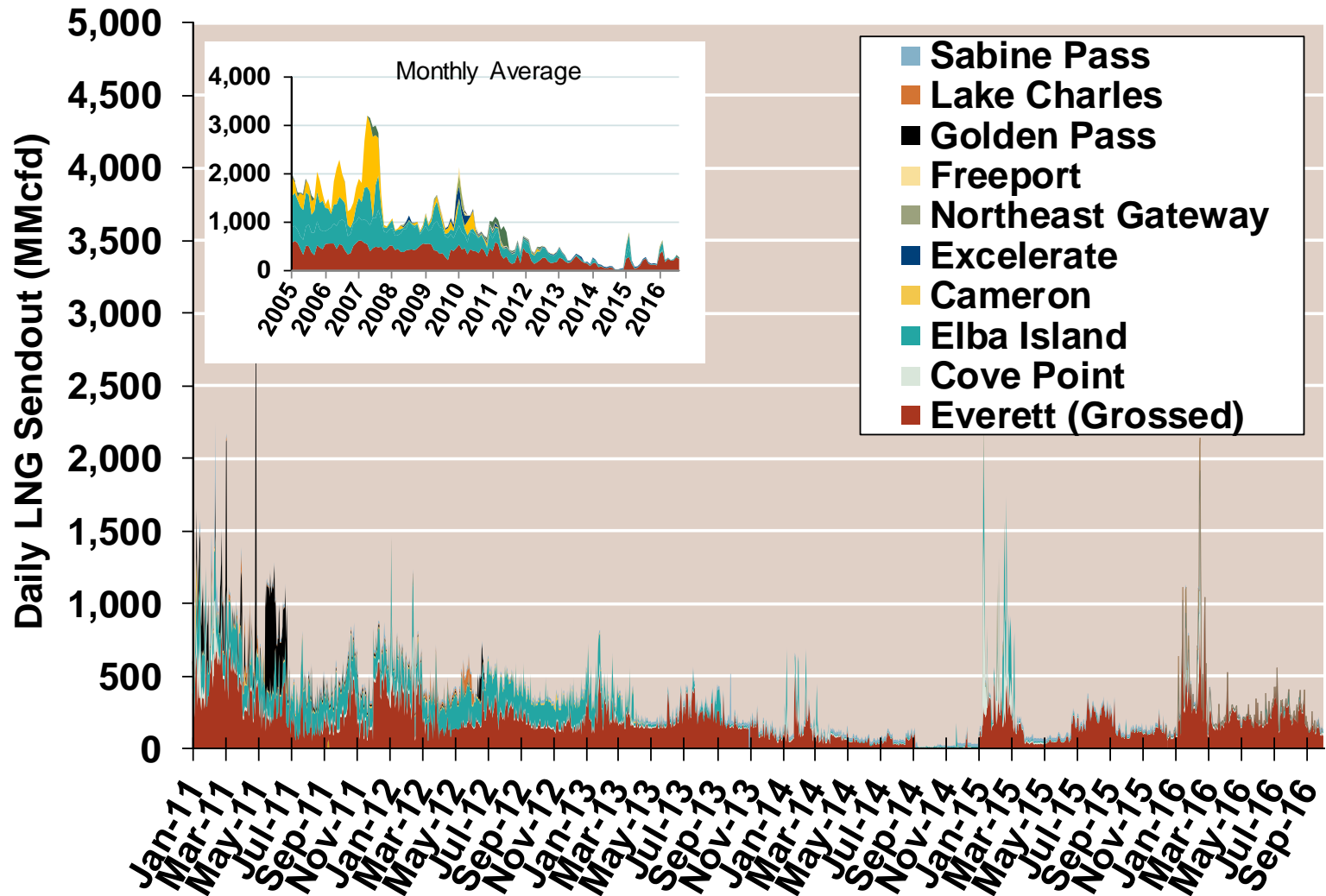
Notes:

Source: Derived from Bloomberg data

Updated

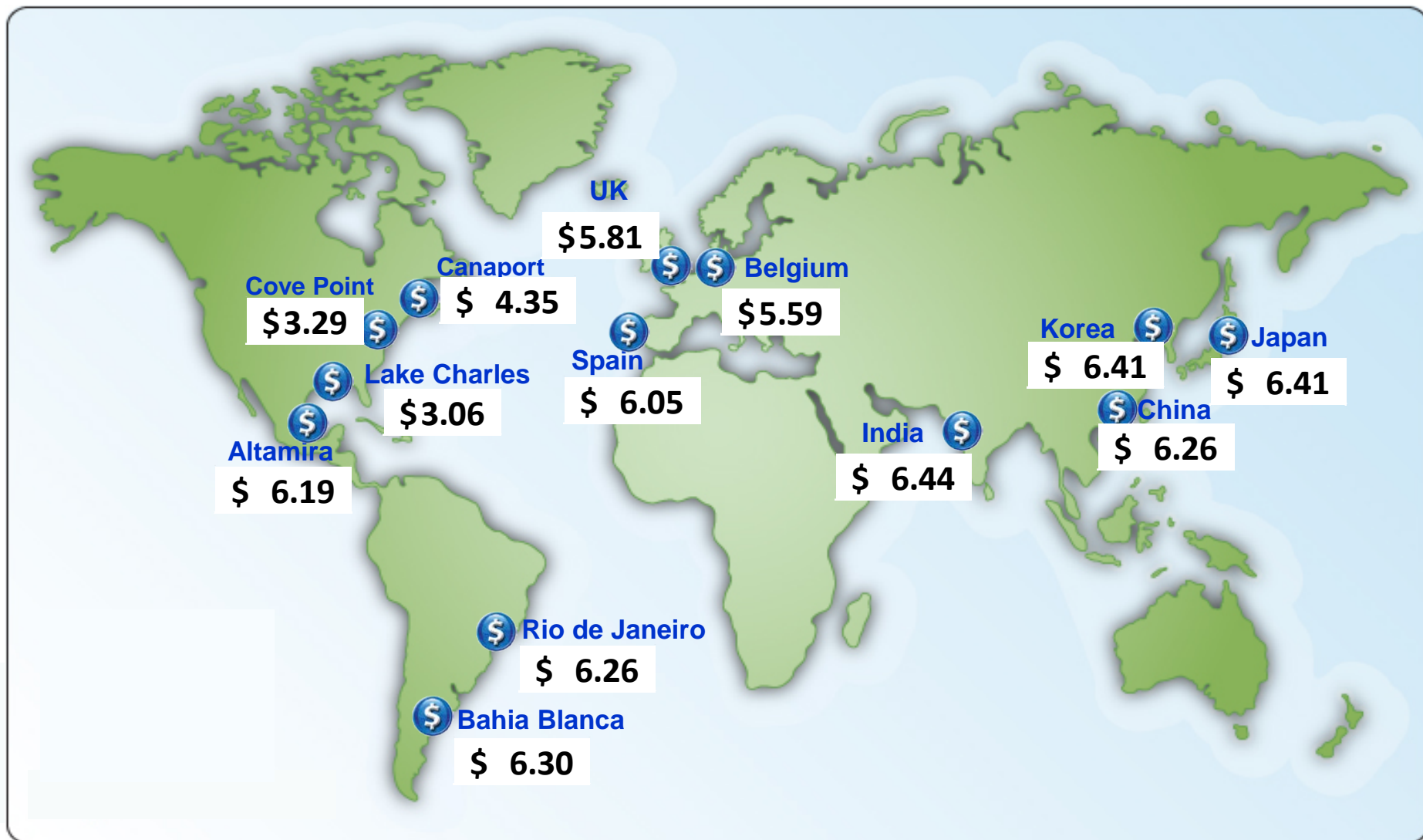
Nov-16

Daily Gas Sendout from Existing U.S. LNG Facilities



Notes: Everett data includes flows onto the AGT and TGP interstate lines, plus estimates of flows to the Mystic 7 power plant, Keyspan Boston Gas, and LNG trucked out of the terminal. Excludes flows to the Freeport LNG which flows via intrastate pipelines and flows to the Mystic 8 and 9 power plants.

World LNG Estimated Landed Prices: Oct-16



Source: Waterborne Energy, Inc. Data in \$US/MMBtu. Landed prices are based on a netback calculation.

Note: Includes information and Data supplied by IHS Global Inc. and its affiliates ("IHS"); Copyright (publication year) all rights reserved. Prices are the monthly average of the weekly landed prices for the listed month.

Updated: Nov-16