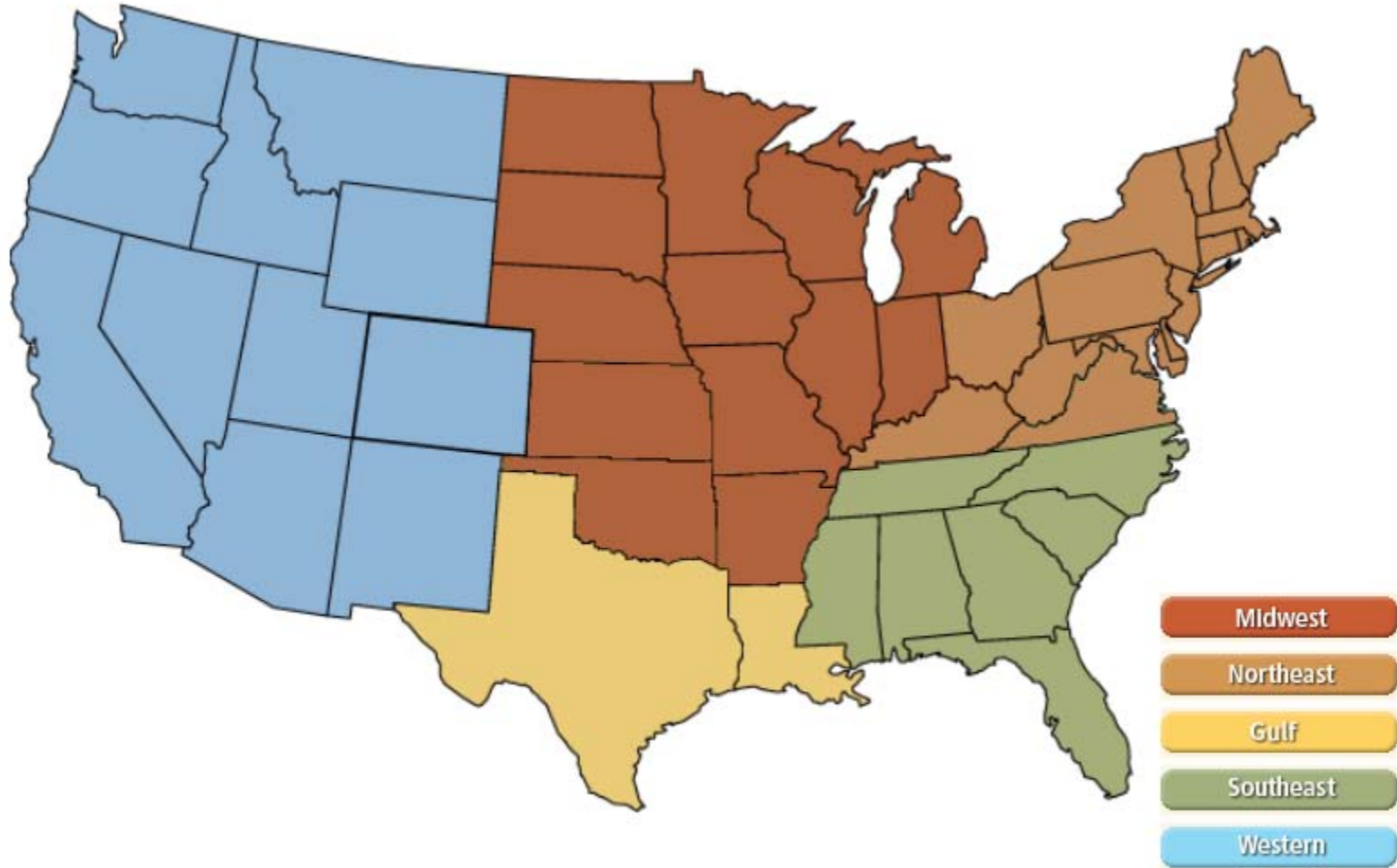
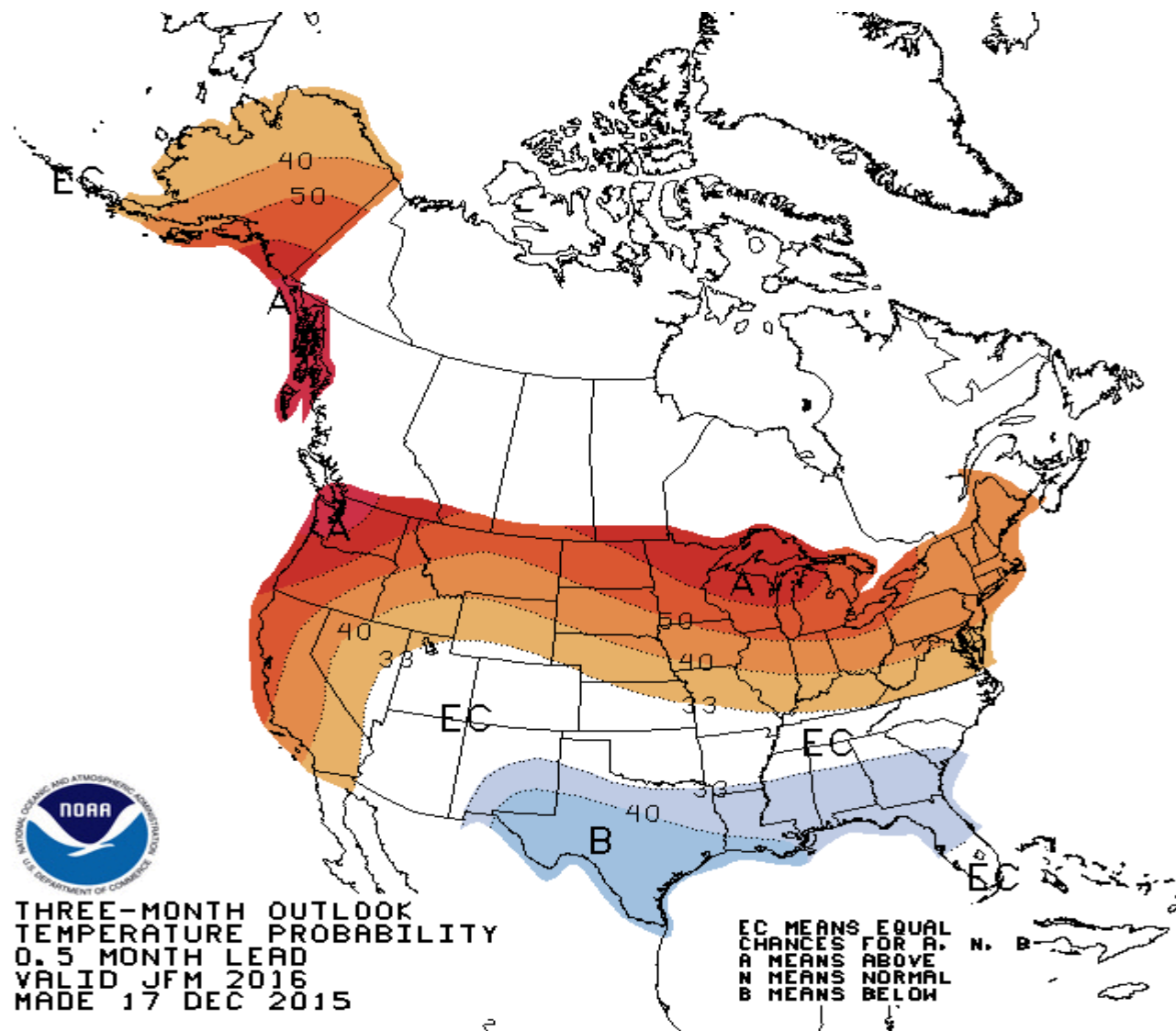


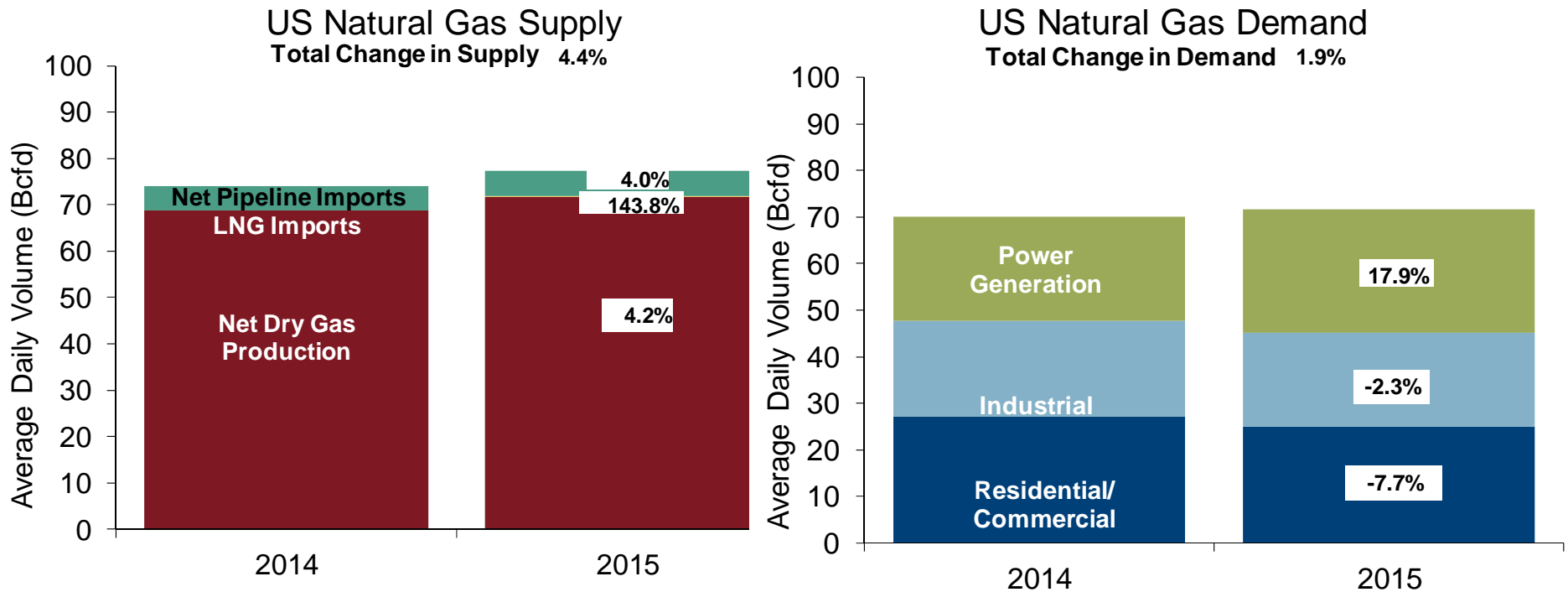
National



NOAA 3 Month Outlook

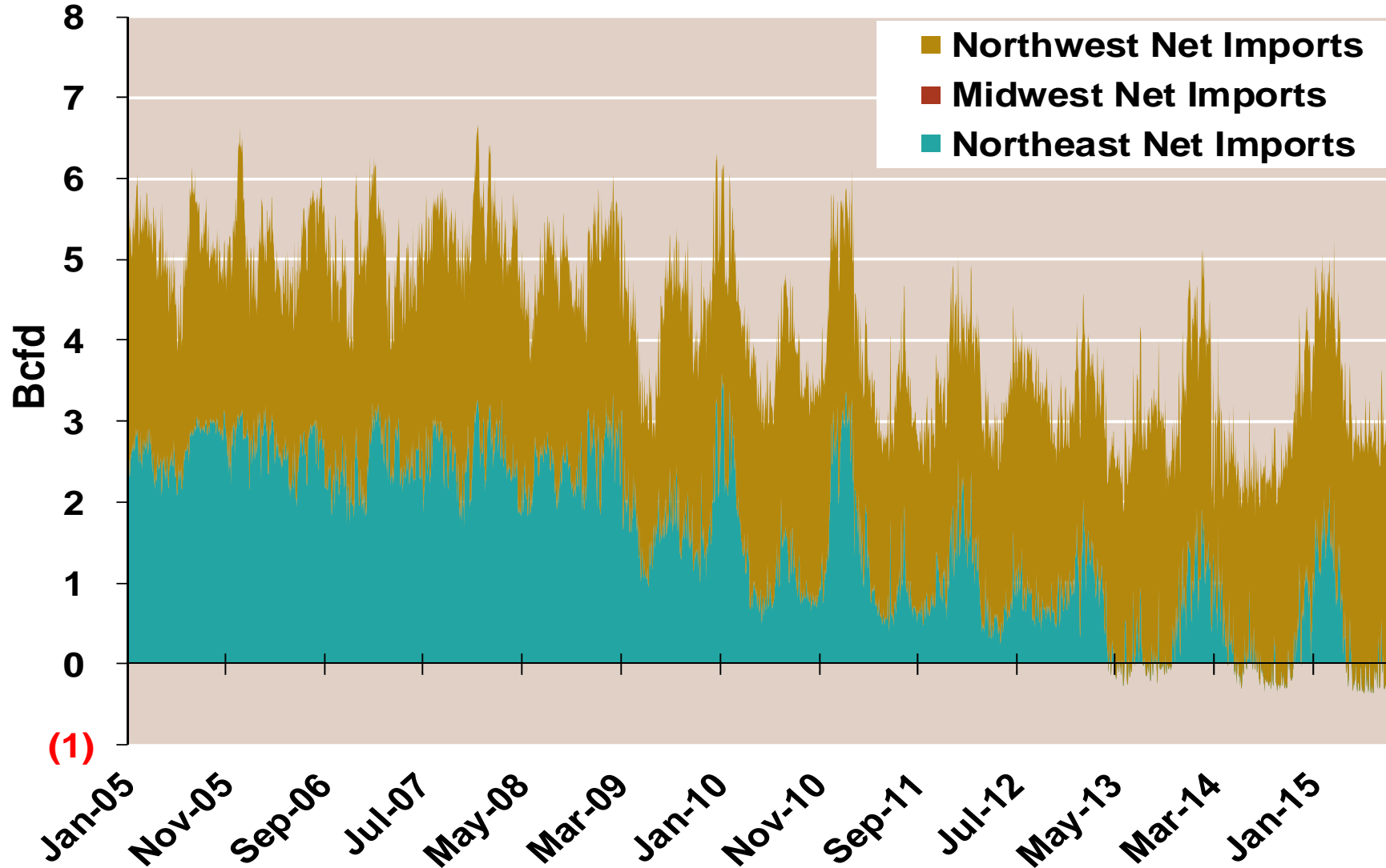


U.S. NG Supply and Demand Nov 2014 YTD vs. Nov 2015 YTD

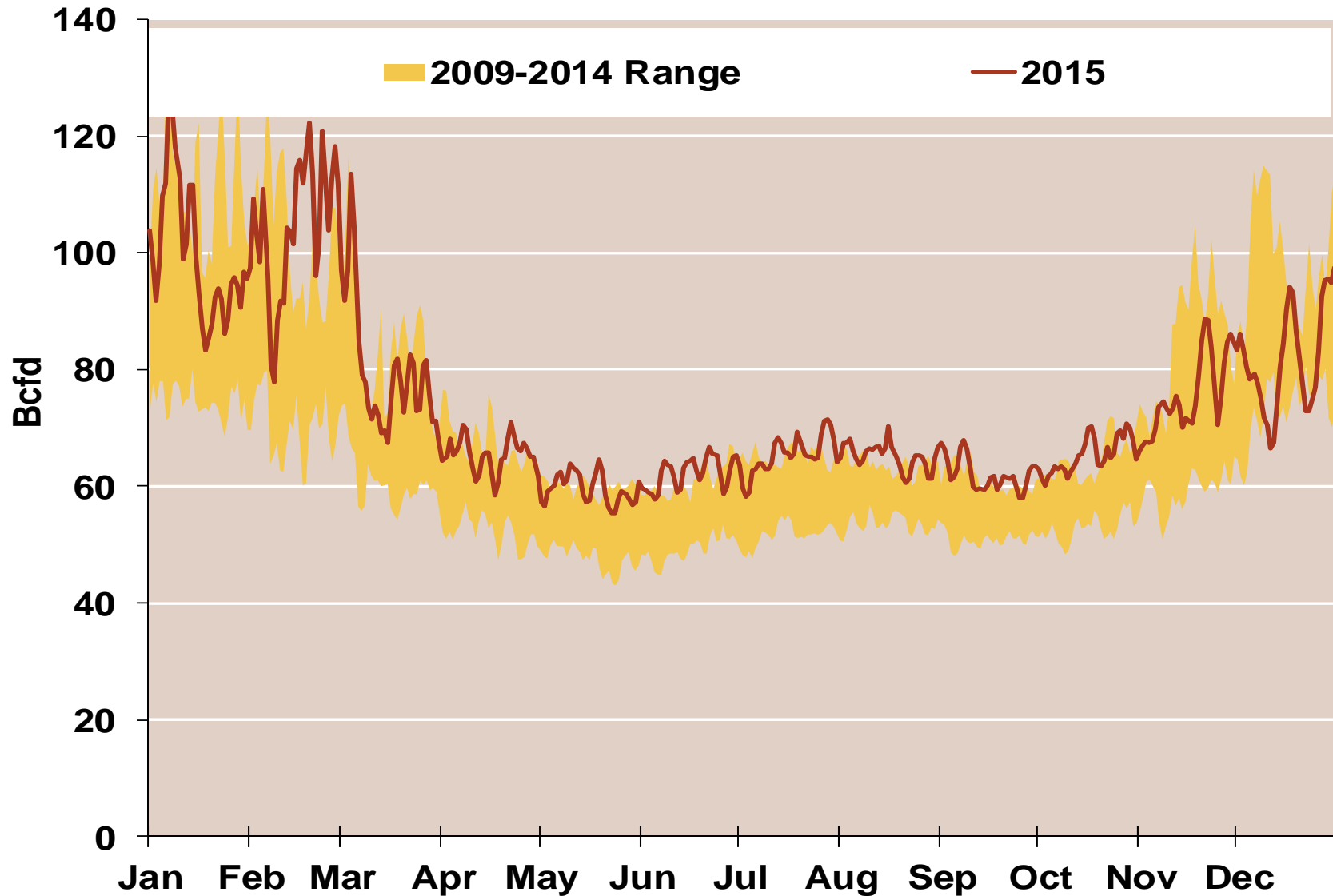


Note: Balance includes all amounts not attributable to other categories.
Source: Derived from *Bentek Energy* data

Regional Canadian Imports

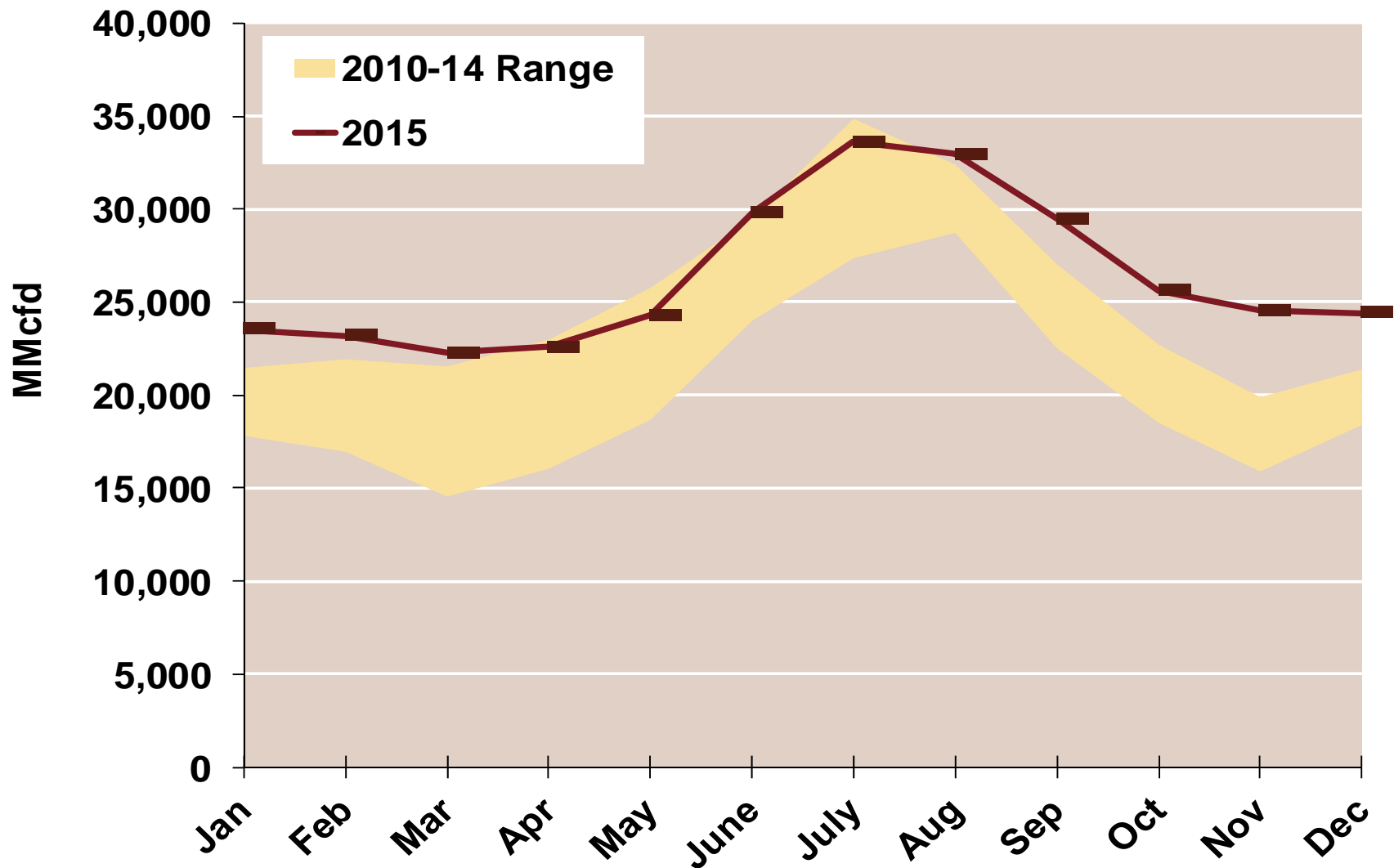


Total U.S. Natural Gas Demand All Sectors

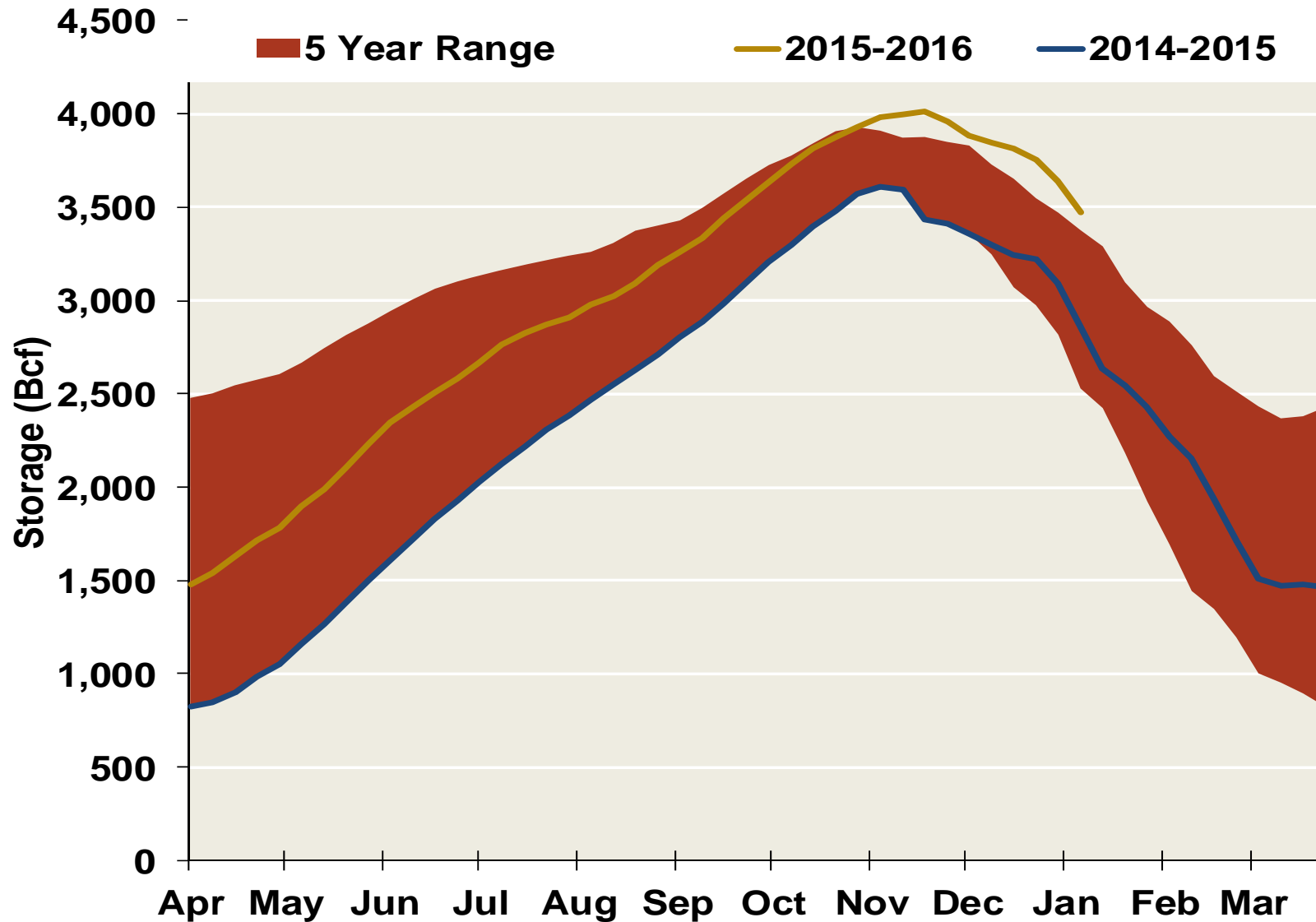


Source: Derived from *Bentek Energy* data, derived from interstate pipeline flow and modeled data.

U.S. Natural Gas Consumption for Power Generation

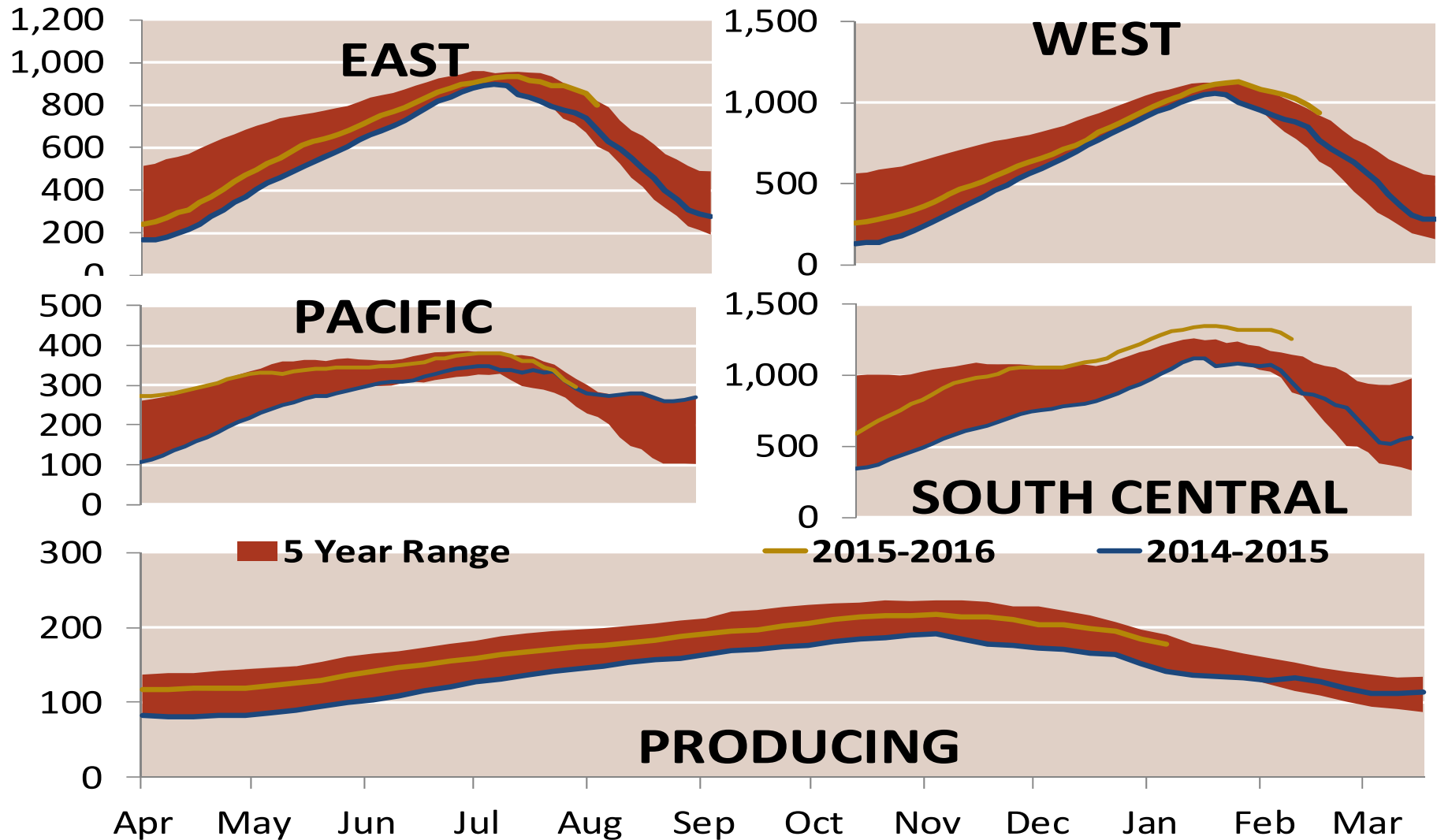


EIA Storage Inventories



No...

EIA Storage Inventories

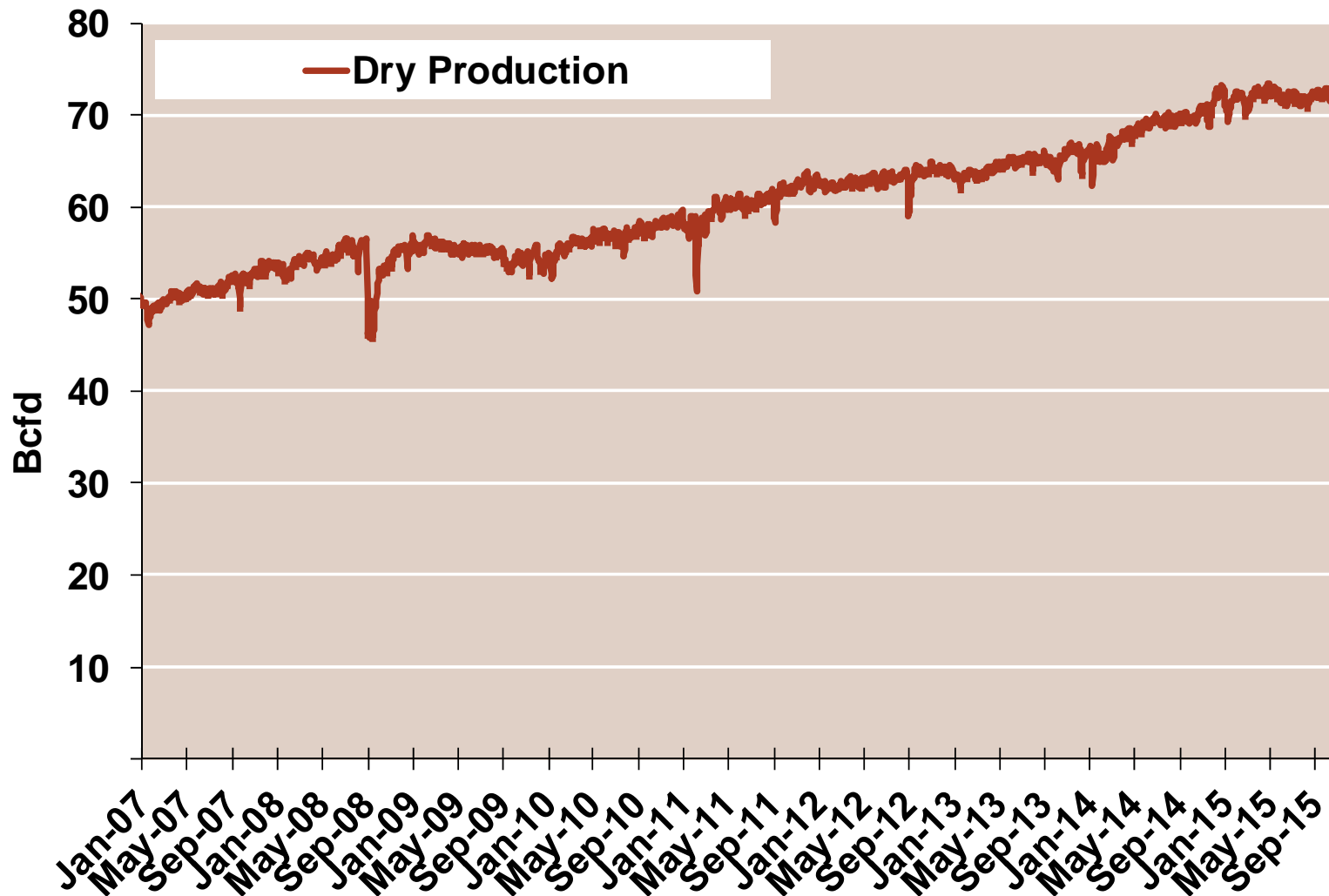


Notes:

Source: Derived from Bloomberg Data

Updated 11/9/2015

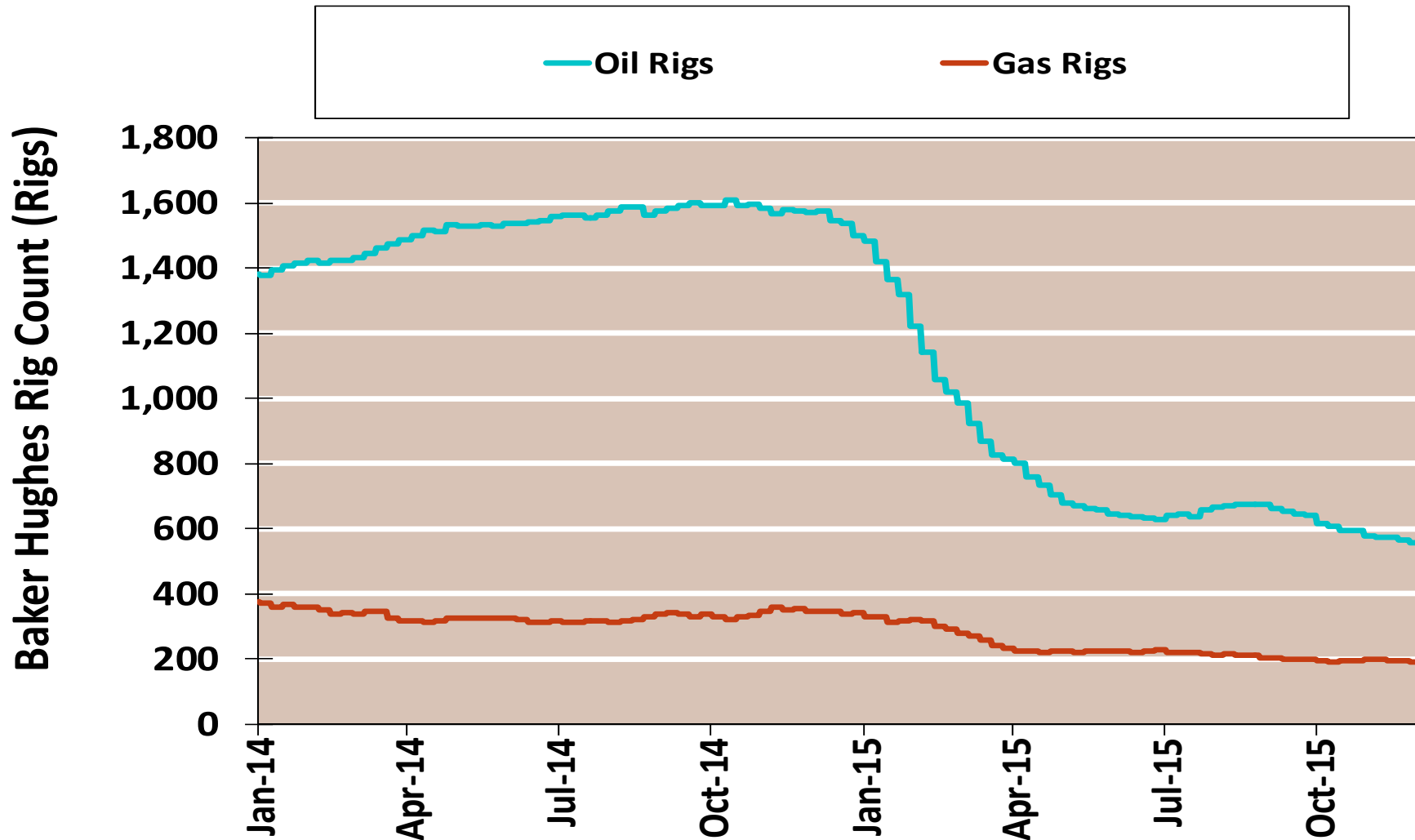
Monthly U.S. Dry Gas Production – Lower 48 States



Updated:

Note: Prior to July 2010, chart was derived from a combination of EIA and Bentek Energy data
Source: Derived from Bentek Energy data

NG Rigs by Fuel Type

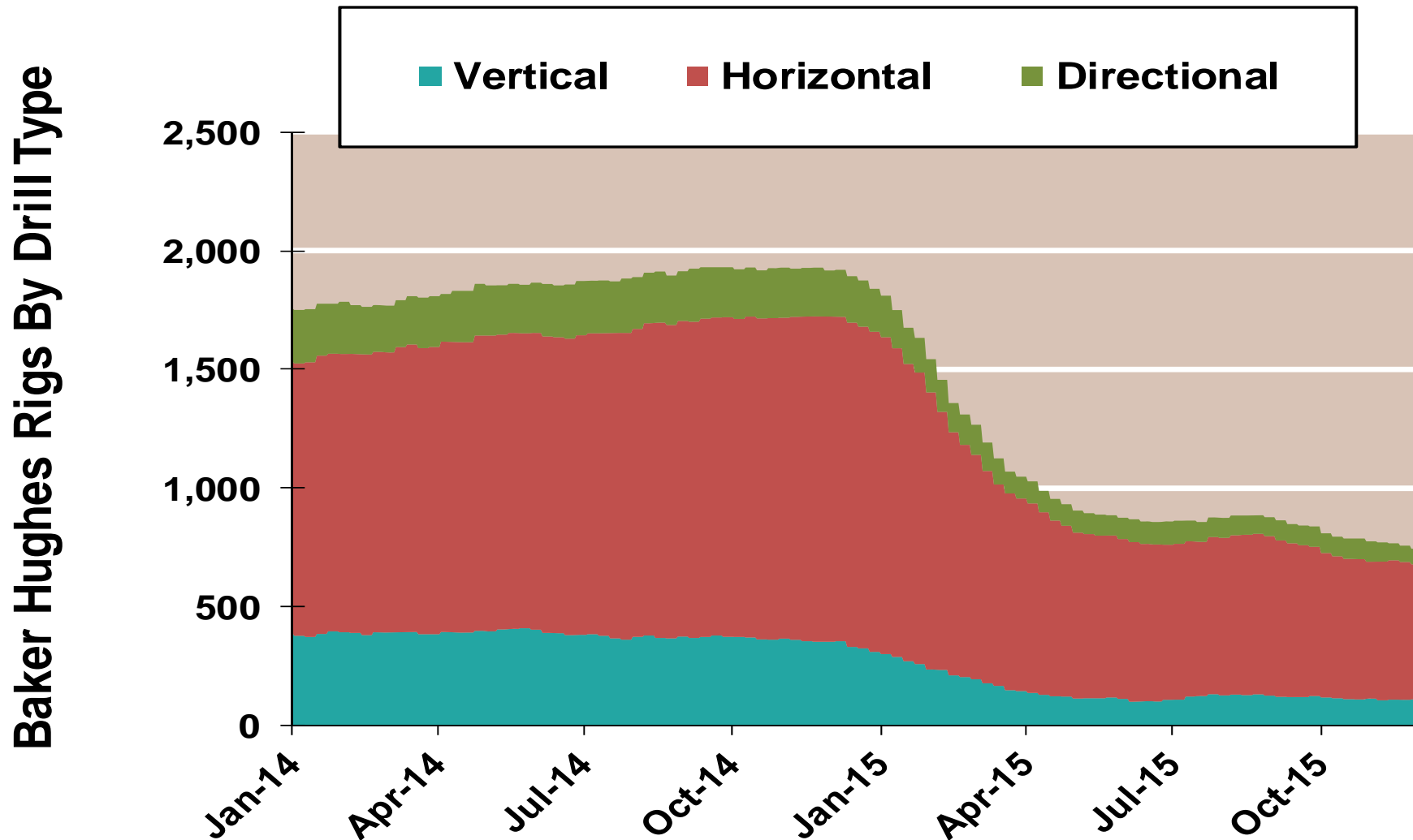


Notes:

Source: Derived from Bloomberg data

Updated 11/9/2015

NG Rig by Direction

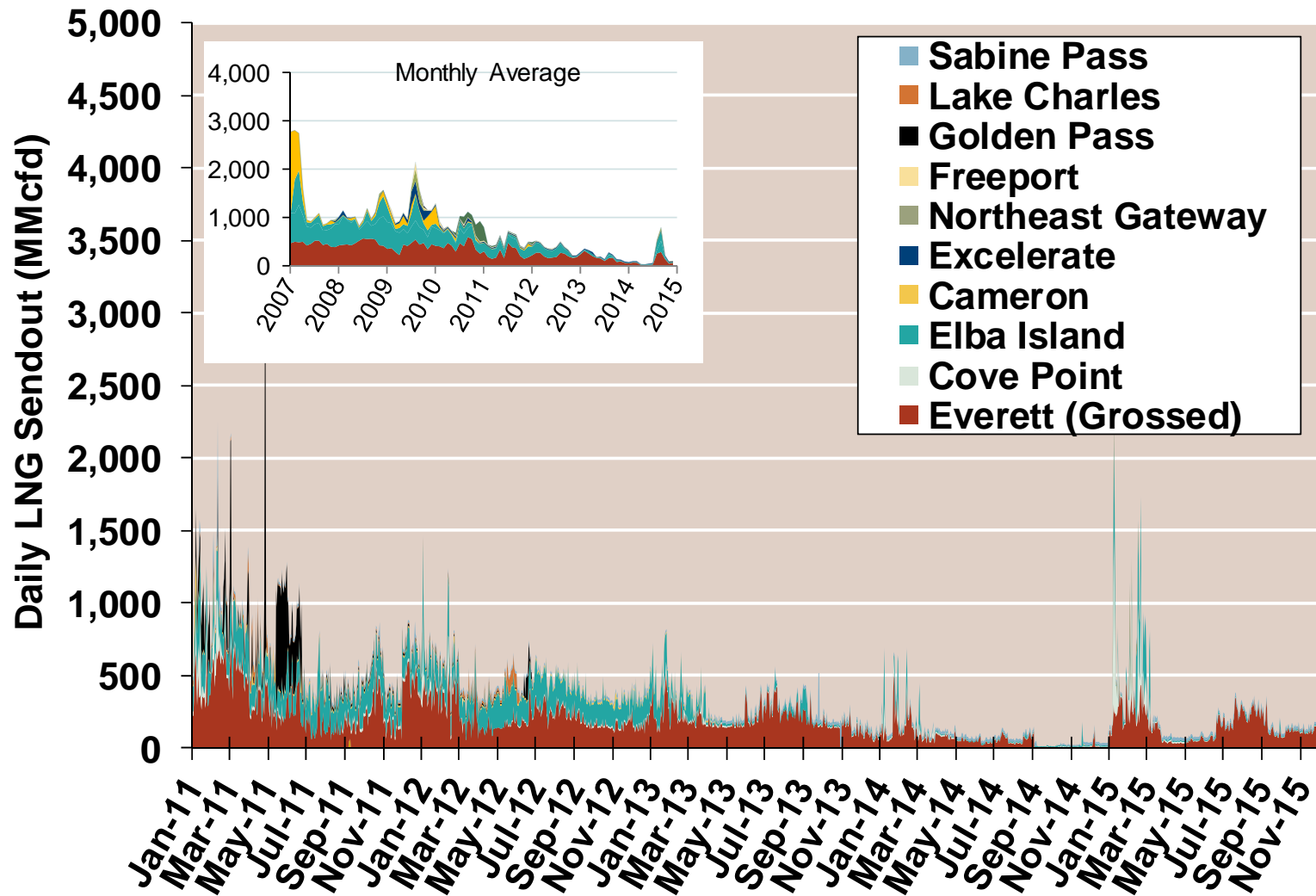


Notes:

Source: Derived from Bloomberg data

Updated 11/9/2015

Daily Gas Sendout from Existing U.S. LNG Facilities



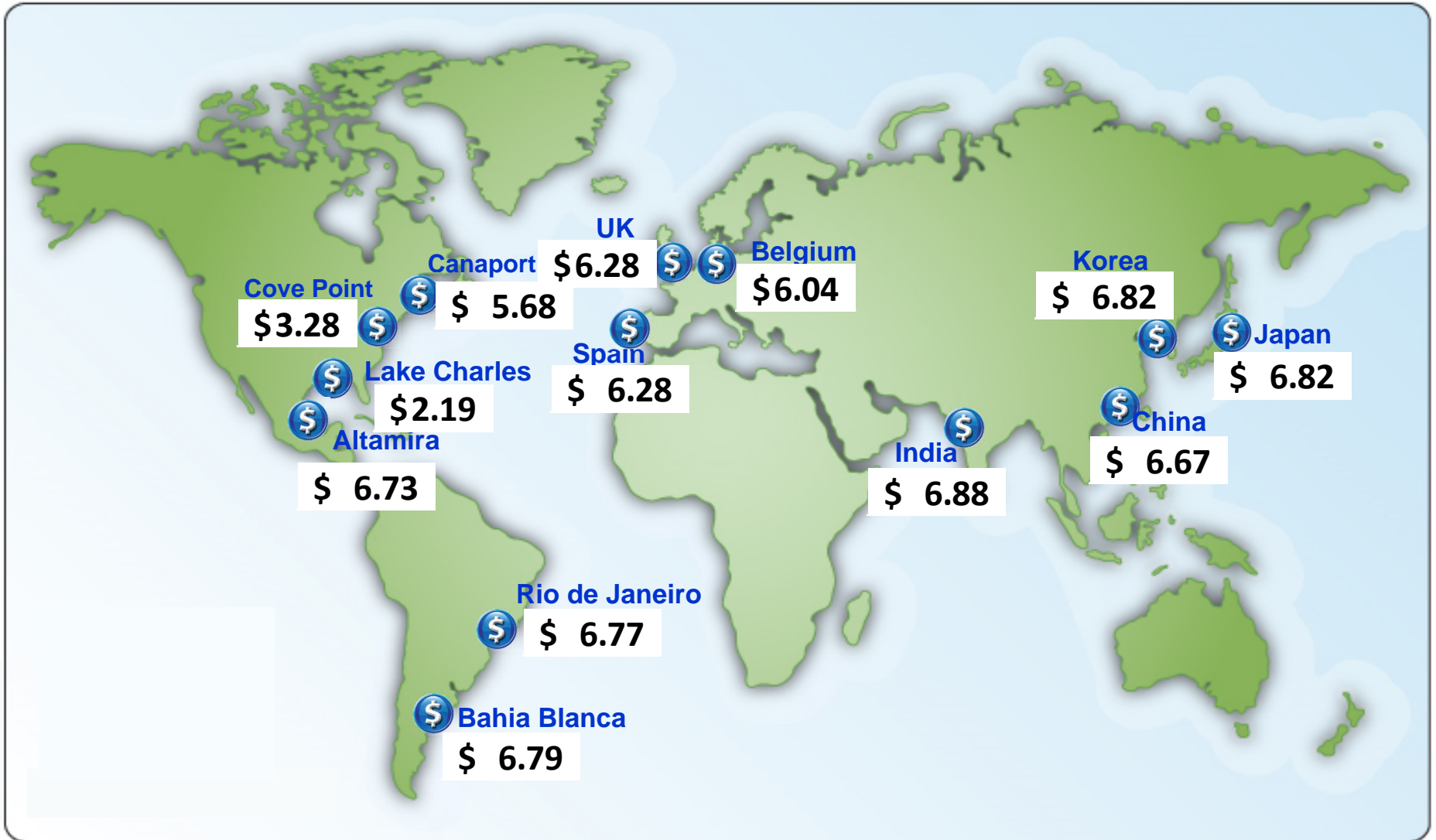
Notes: Everett data includes flows onto the AGT and TGP interstate lines, plus estimates of flows to the Mystic 7 power plant, Keyspan Boston Gas, and LNG trucked out of the terminal. Excludes flows to the Freeport LNG which flows via intrastate pipelines and flows to the Mystic 8 and 9 power plants.

Source: Derived from *Bentek Energy* data

Updated:

October 2015

World LNG Estimated Landed Prices: Oct-15



Source: Waterborne Energy, Inc. Data in \$US/MMBtu

Note: Includes information and Data supplied by IHS Global Inc. and its affiliates ("IHS"); Copyright (publication year) all rights reserved. Landed prices are the monthly average of weekly trades from the prior month.

Updated Apr-2016