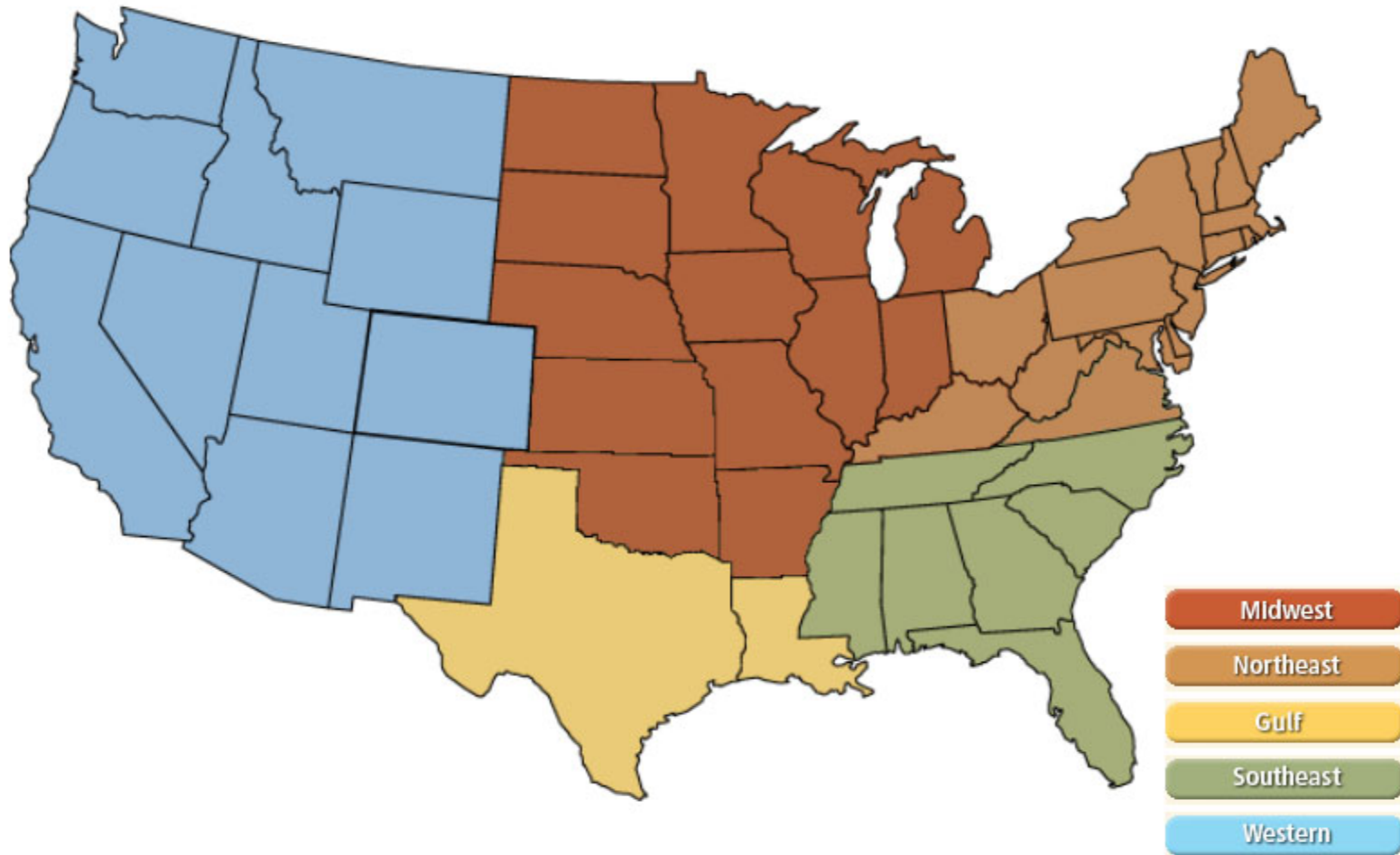


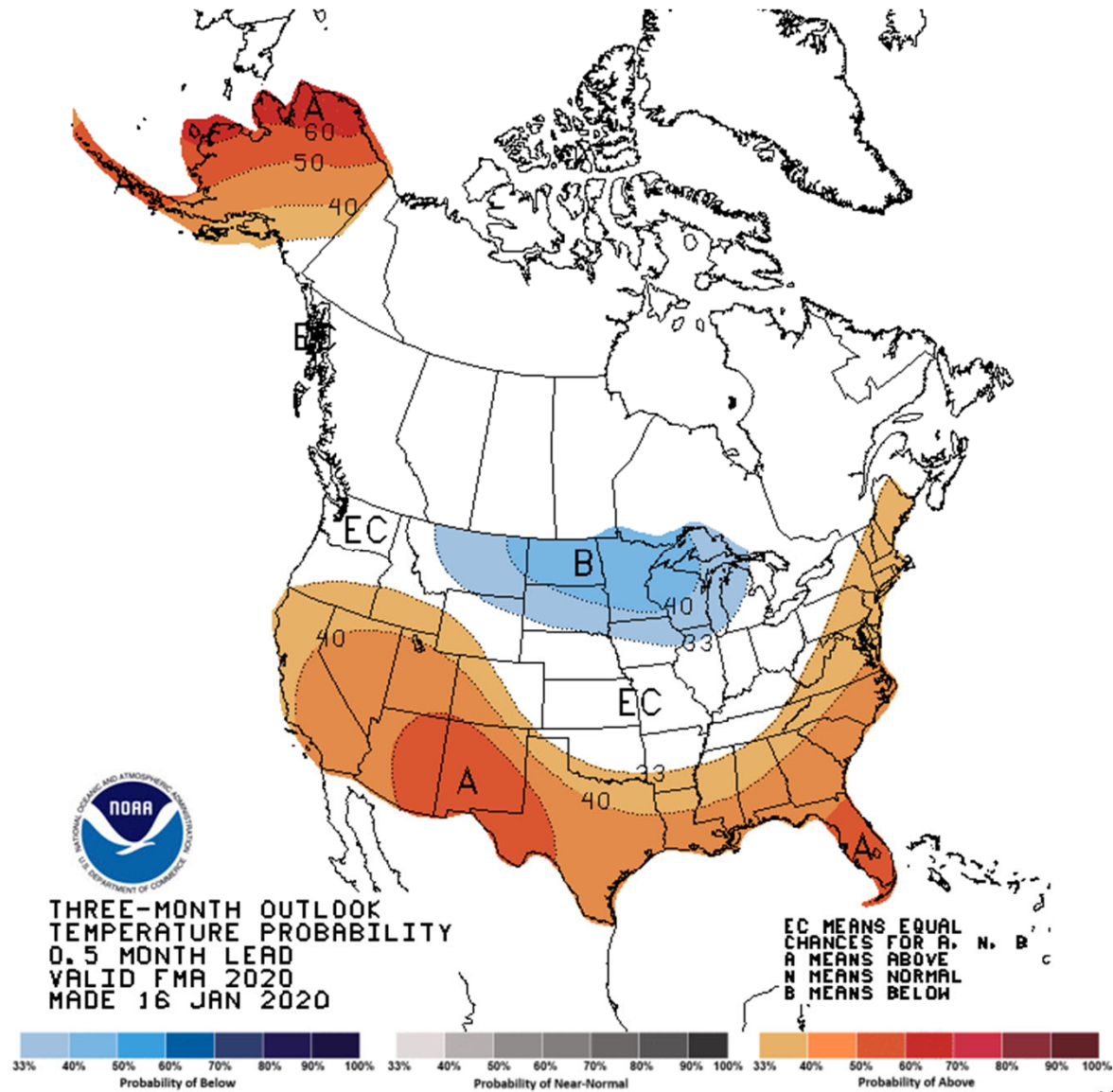
# National

Federal Energy Regulatory Commission **Market Assessments**



# NOAA 3 Month Outlook

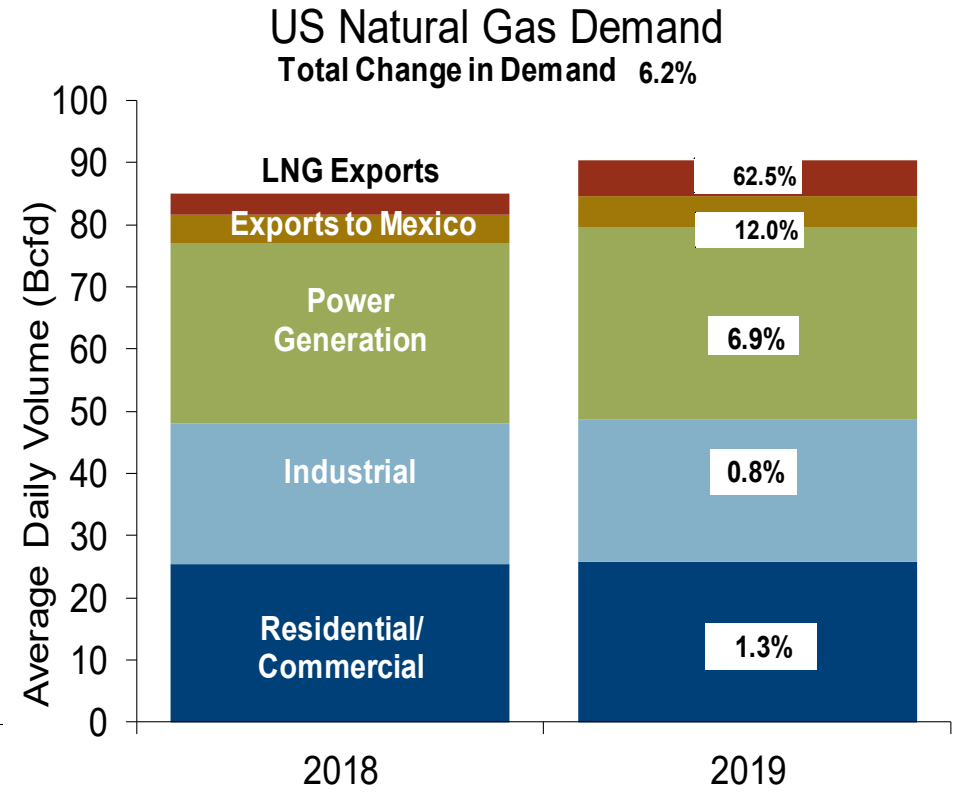
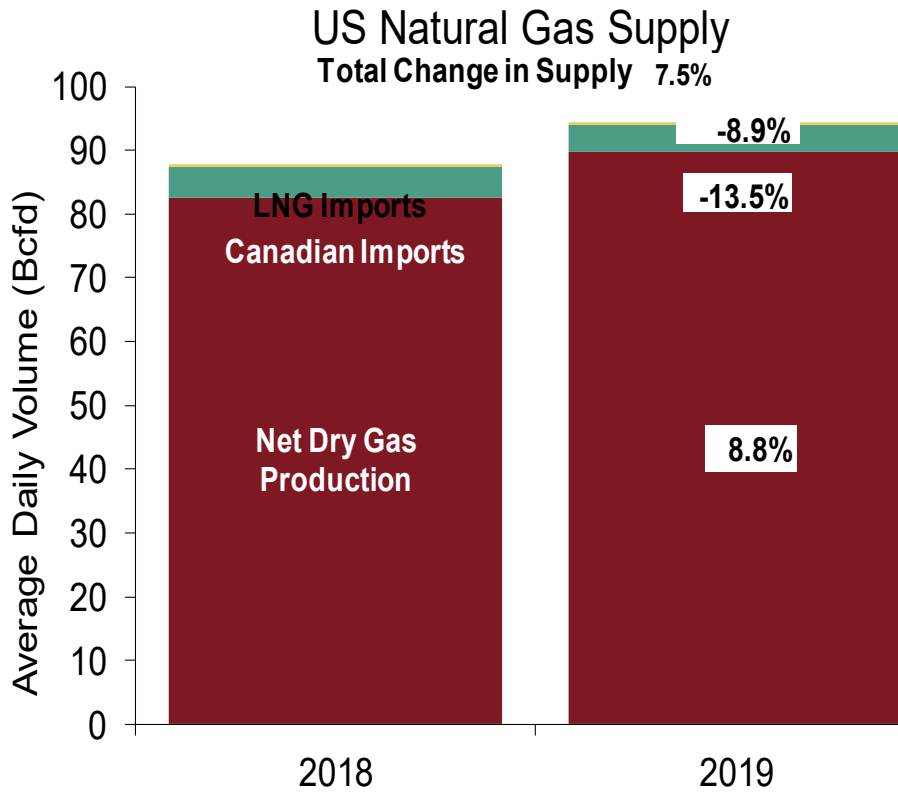
Federal Energy Regulatory Commission **Market Assessments**



National Natural Gas Market Overview: U.S. Supply and Consumption

U.S. NG Supply and Demand Dec-18 YTD vs. Dec-19 YTD

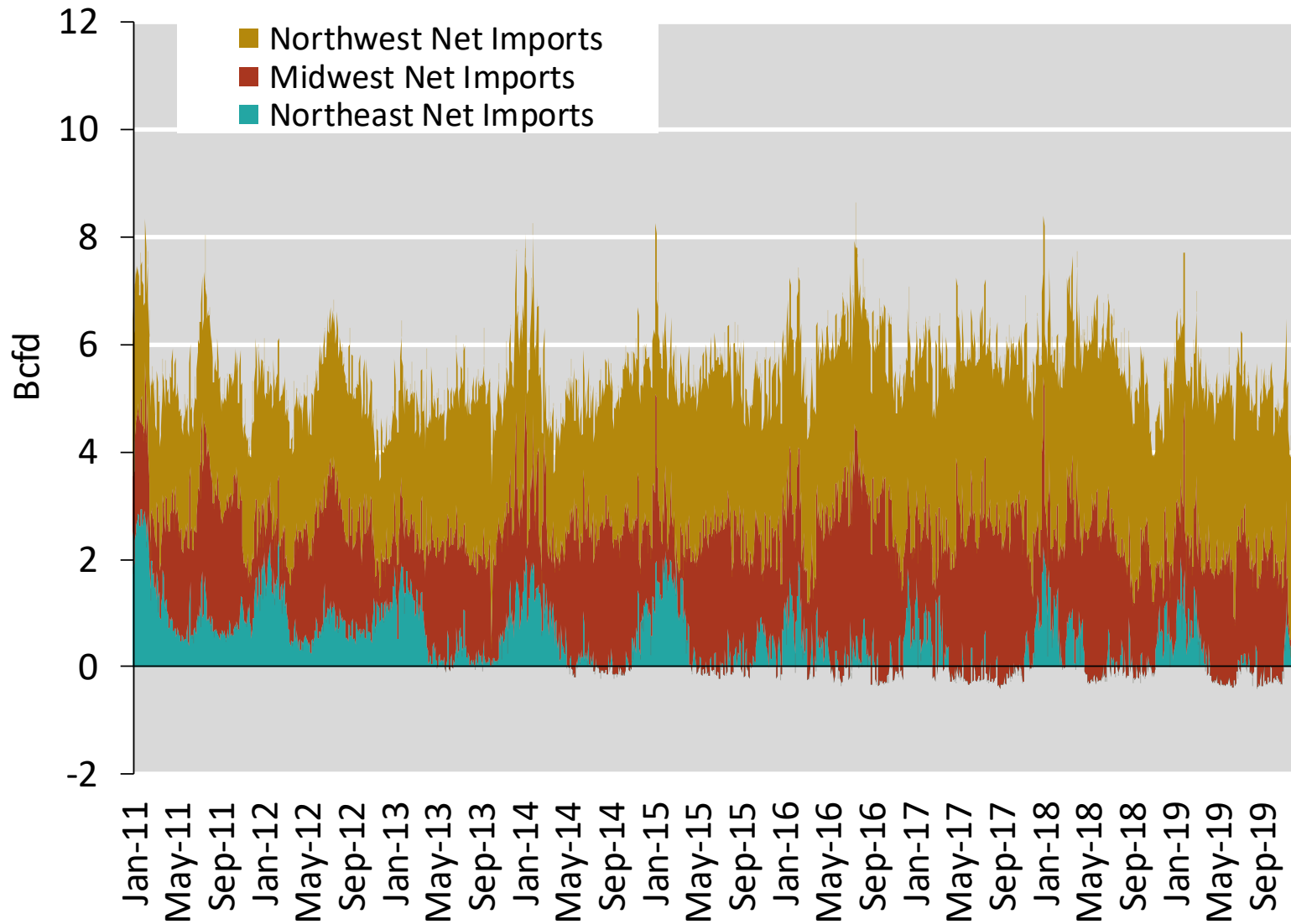
Federal Energy Regulatory Commission Market Assessments



Note: Balance includes all amounts not attributable to other categories.  
 Source: Derived from Bentek Energy data

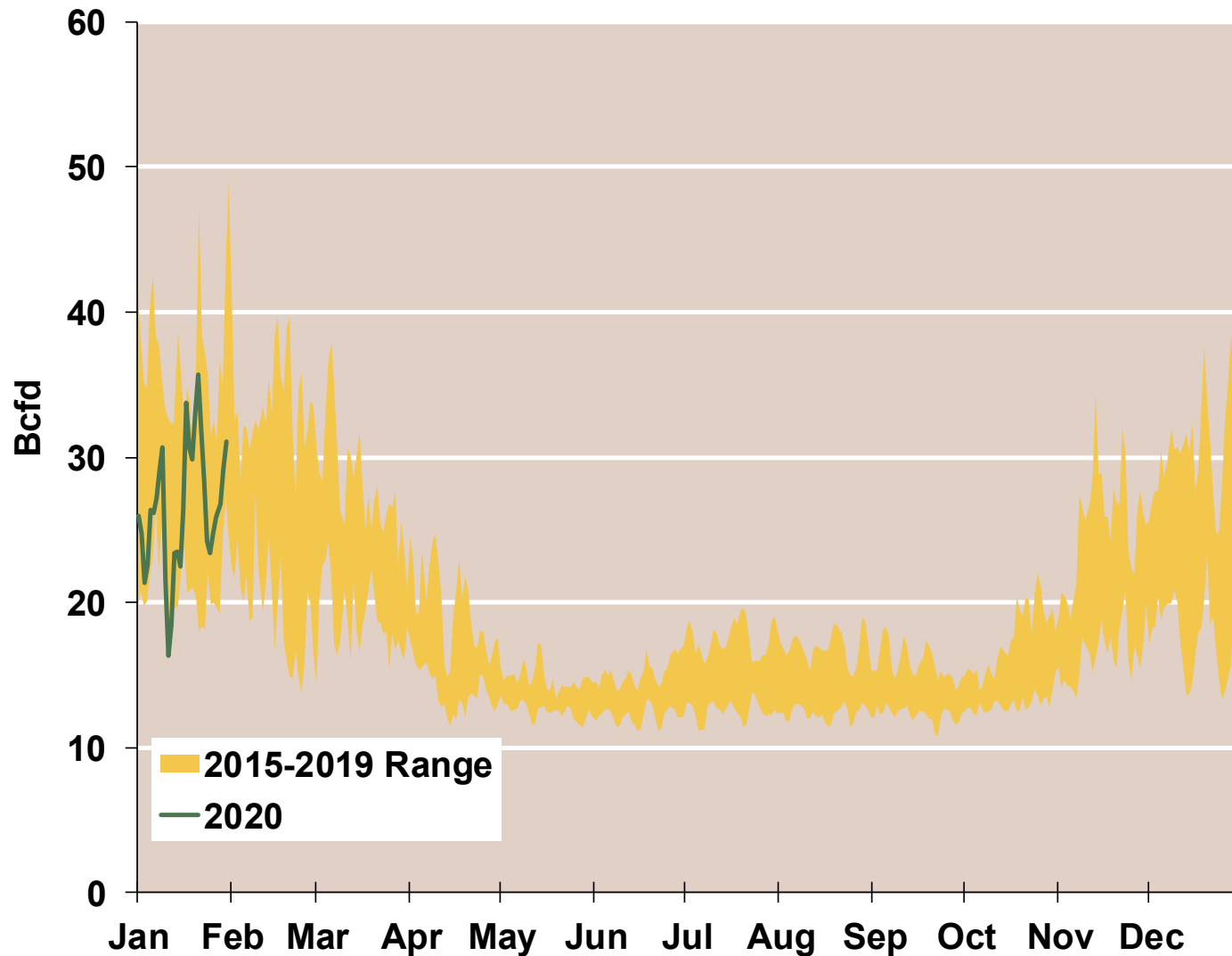
# Regional Canadian Imports

Federal Energy Regulatory Commission Market Assessments



# Total U.S. Natural Gas Demand All Sectors

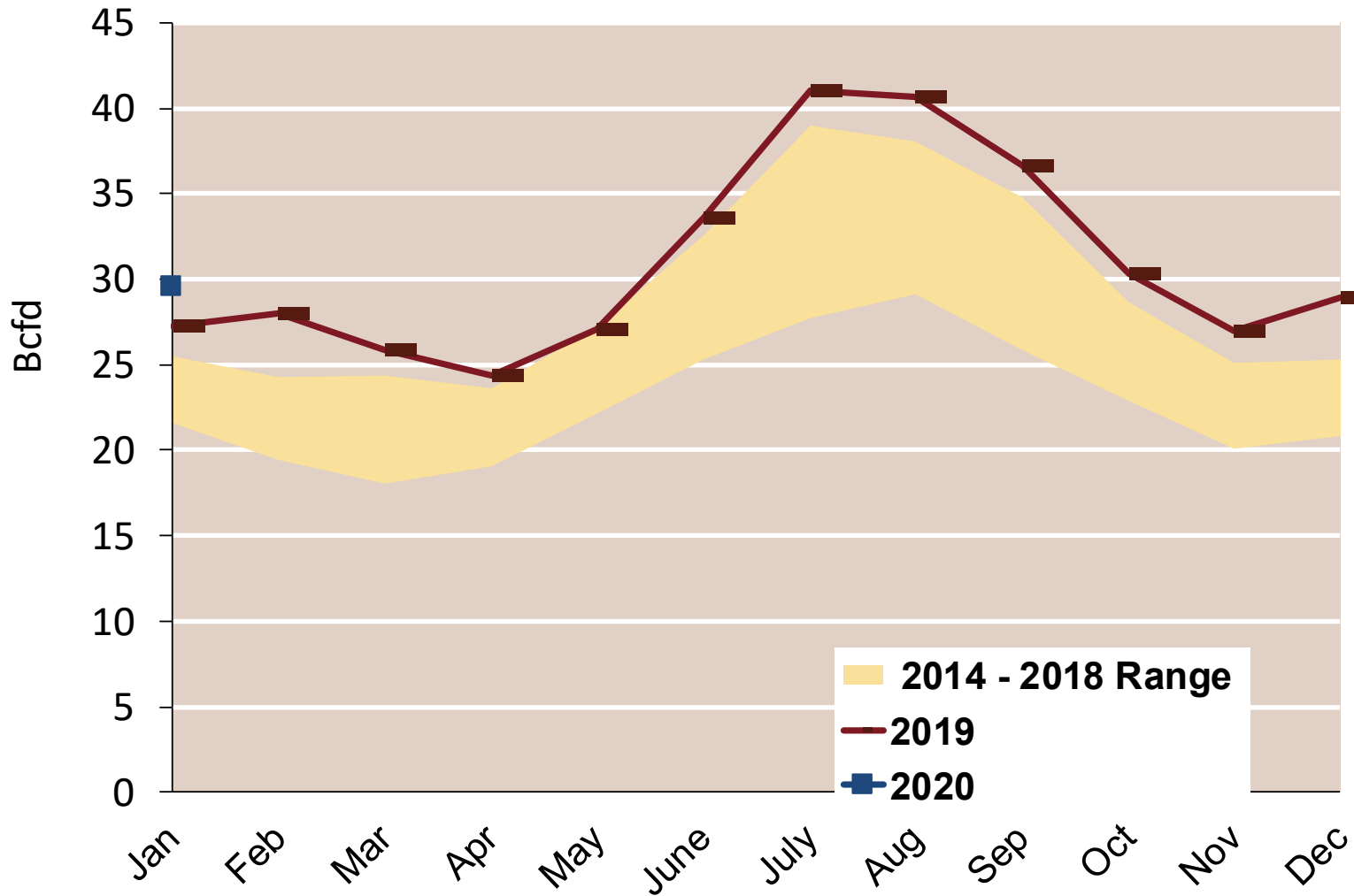
Federal Energy Regulatory Commission **Market Assessments**



Source: Derived from *Bentek Energy* data, derived from interstate pipeline flow and modeled data.

# U.S. Natural Gas Consumption for Power Generation

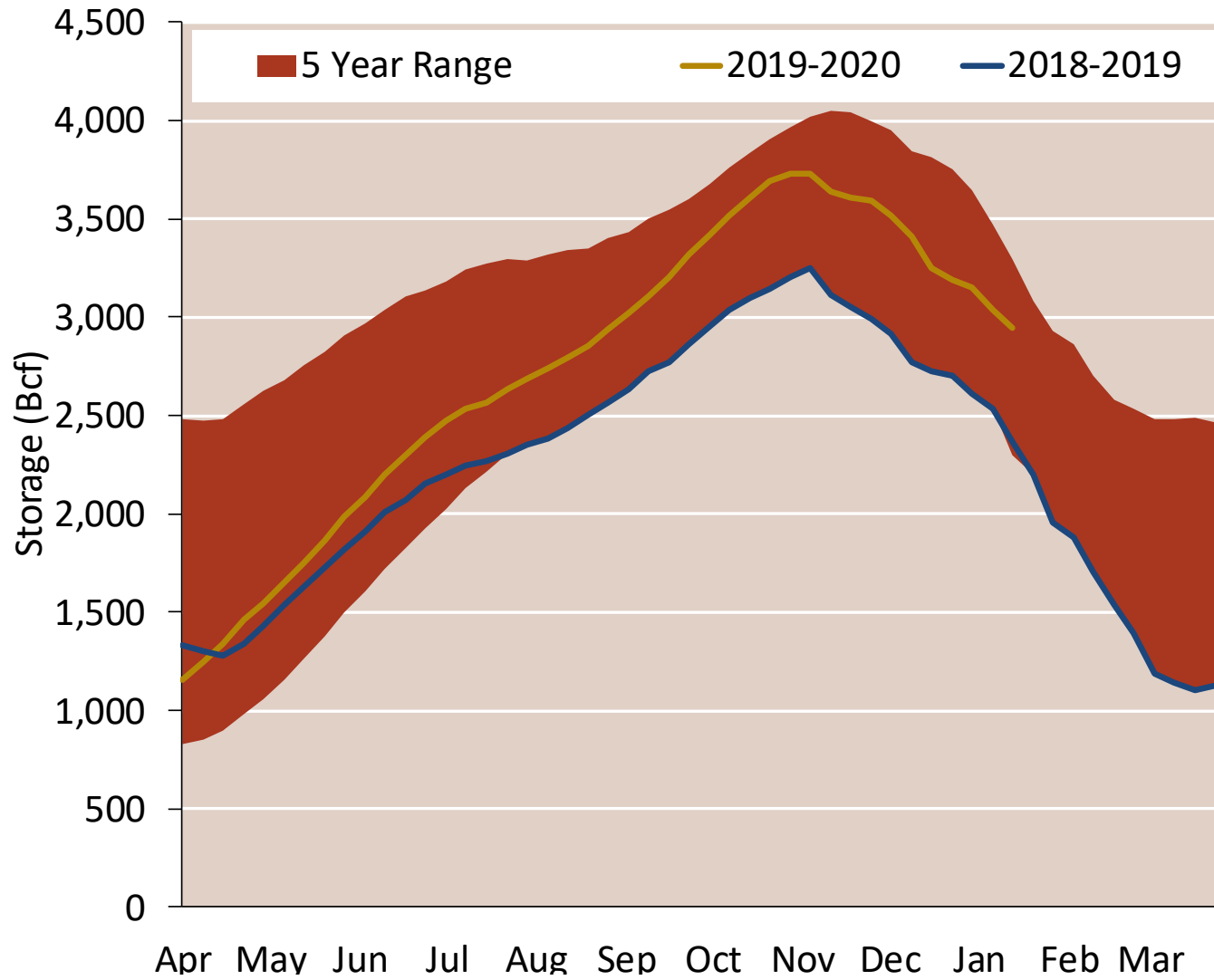
Federal Energy Regulatory Commission **Market Assessments**



# National Natural Gas Market Overview: Natural Gas Storage Inventory

## EIA Storage Inventories

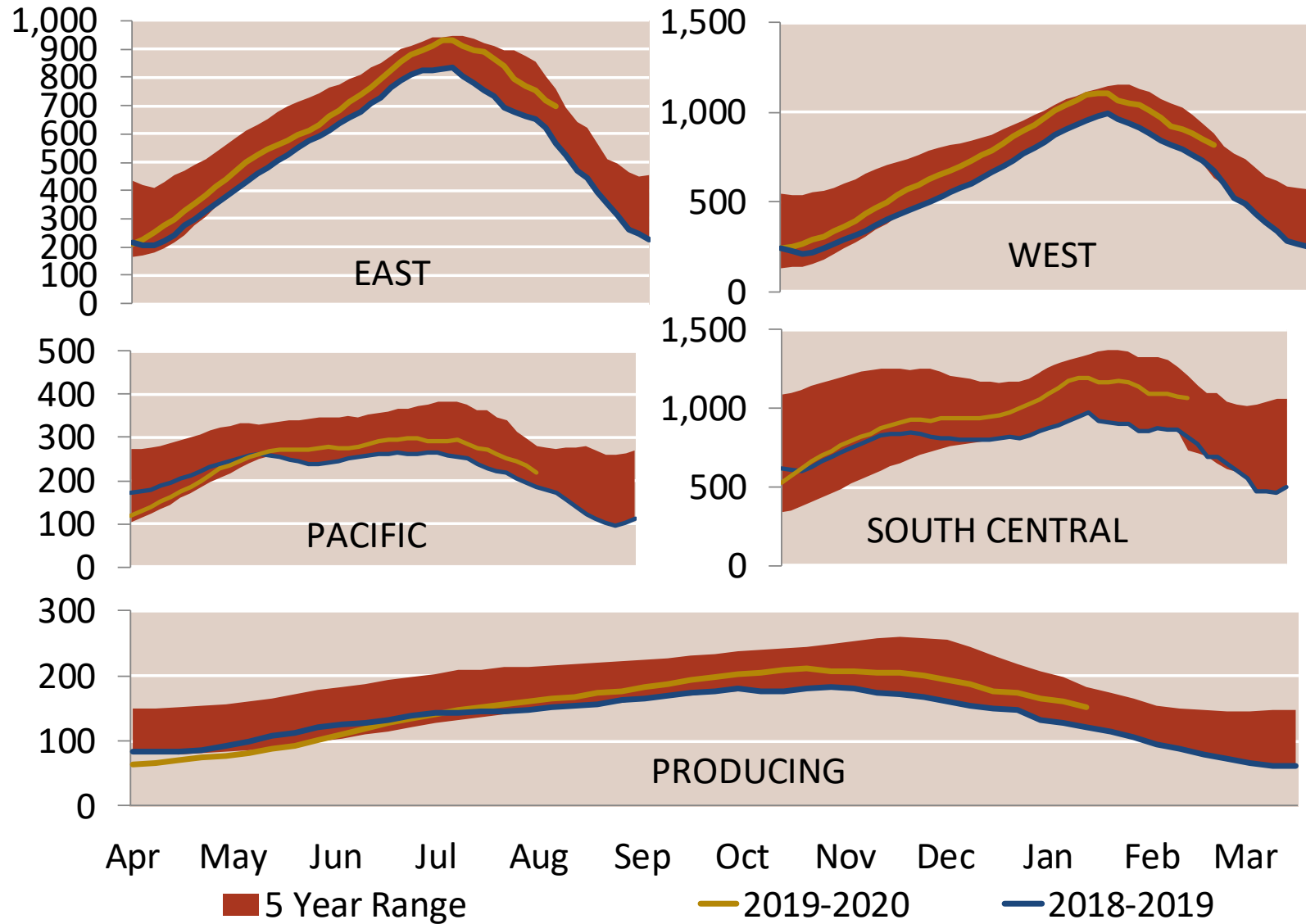
Federal Energy Regulatory Commission **Market Assessments**



National Natural Gas Market Overview: Regional Natural Gas Storage Inventory

EIA Storage Inventories

Federal Energy Regulatory Commission Market Assessments

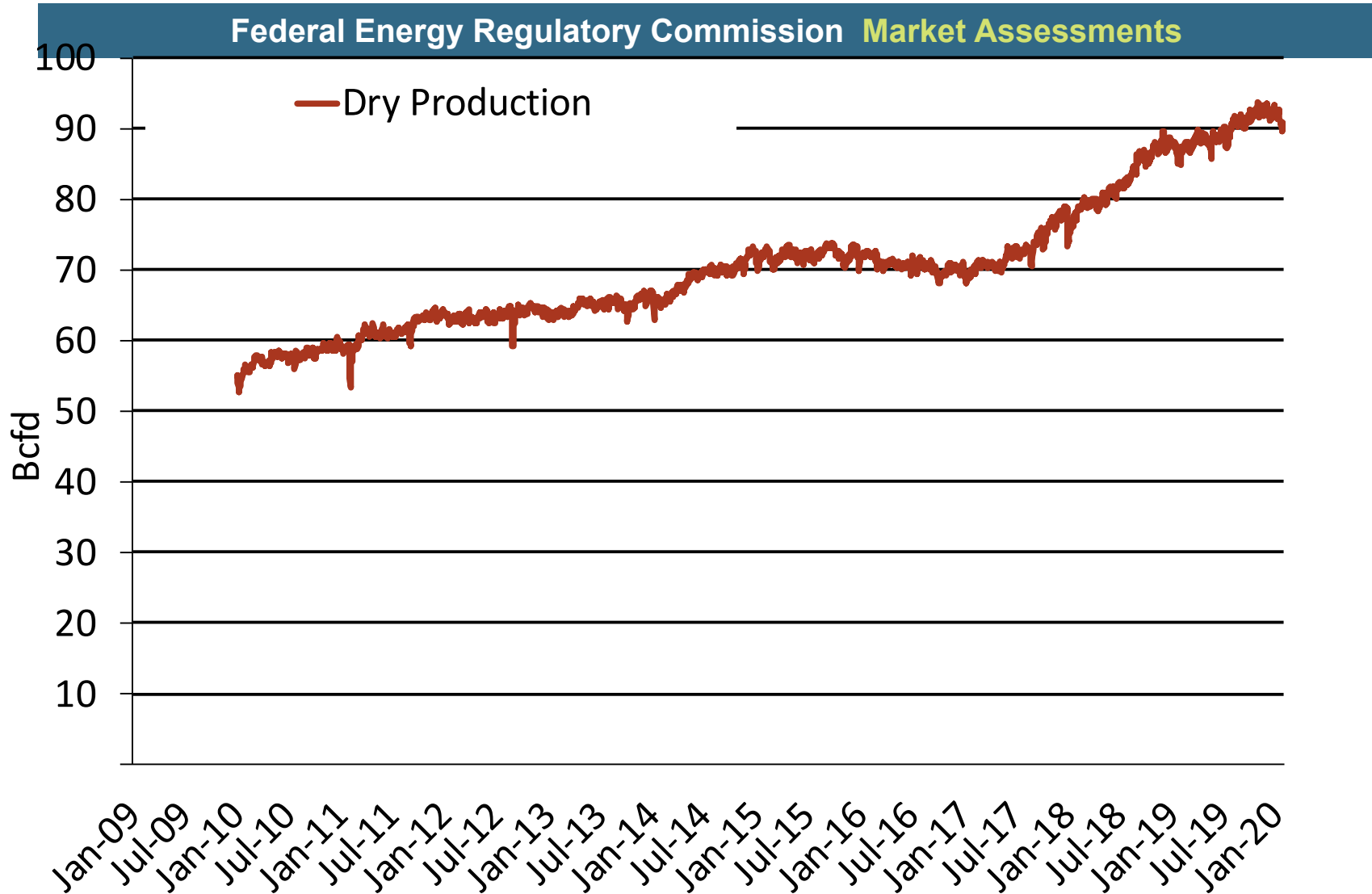


Source: Derived from Bloomberg Data



National Natural Gas Market Overview: Monthly U.S. Dry Gas Production

Monthly U.S. Dry Gas Production – Lower 48 States

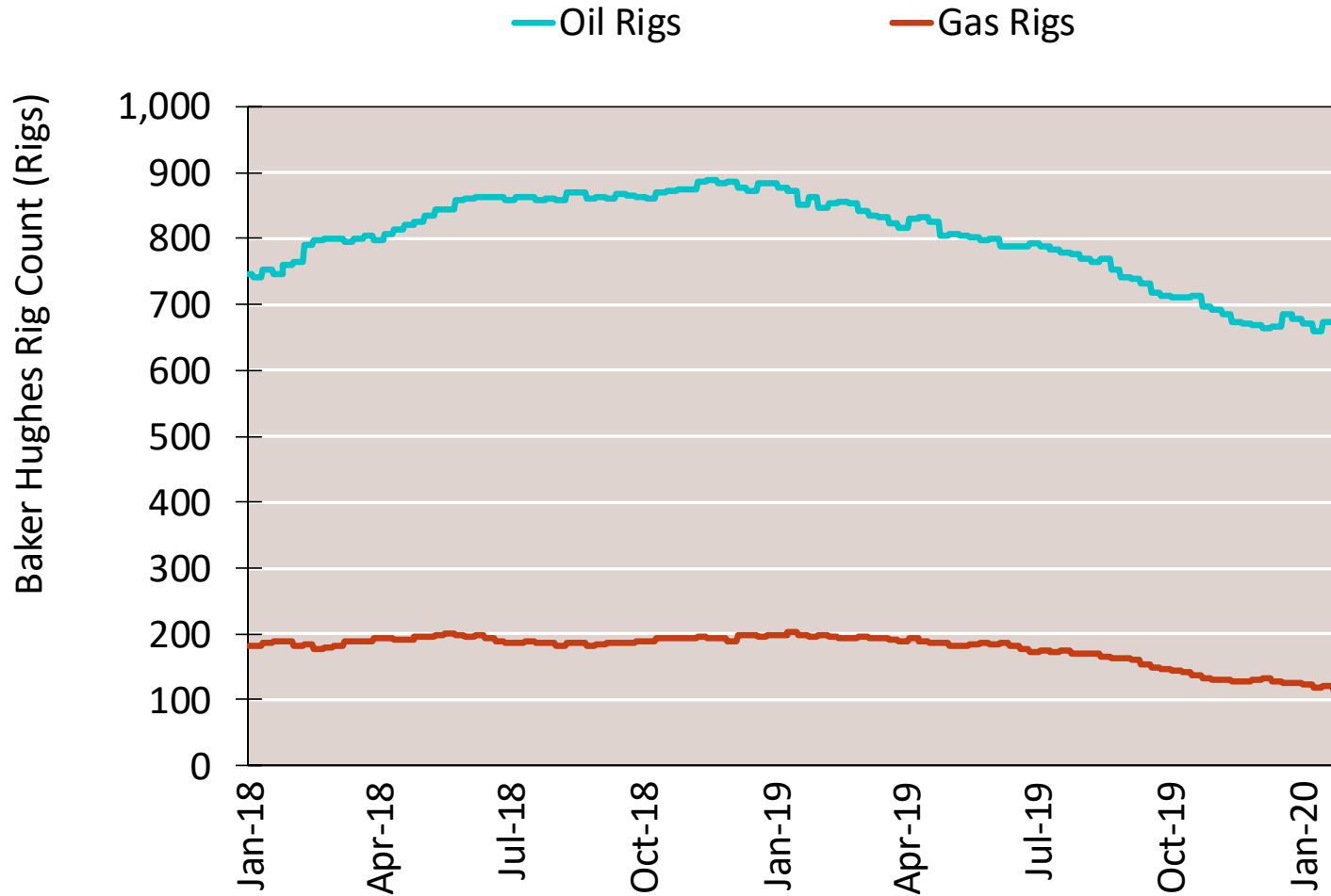


Note: Prior to July 2010, chart was derived from a combination of EIA and Bentek Energy data  
Source: Derived from Bentek Energy data

# National Natural Gas Market Overview: Rig Count by Type

## NG Rigs by Fuel Type

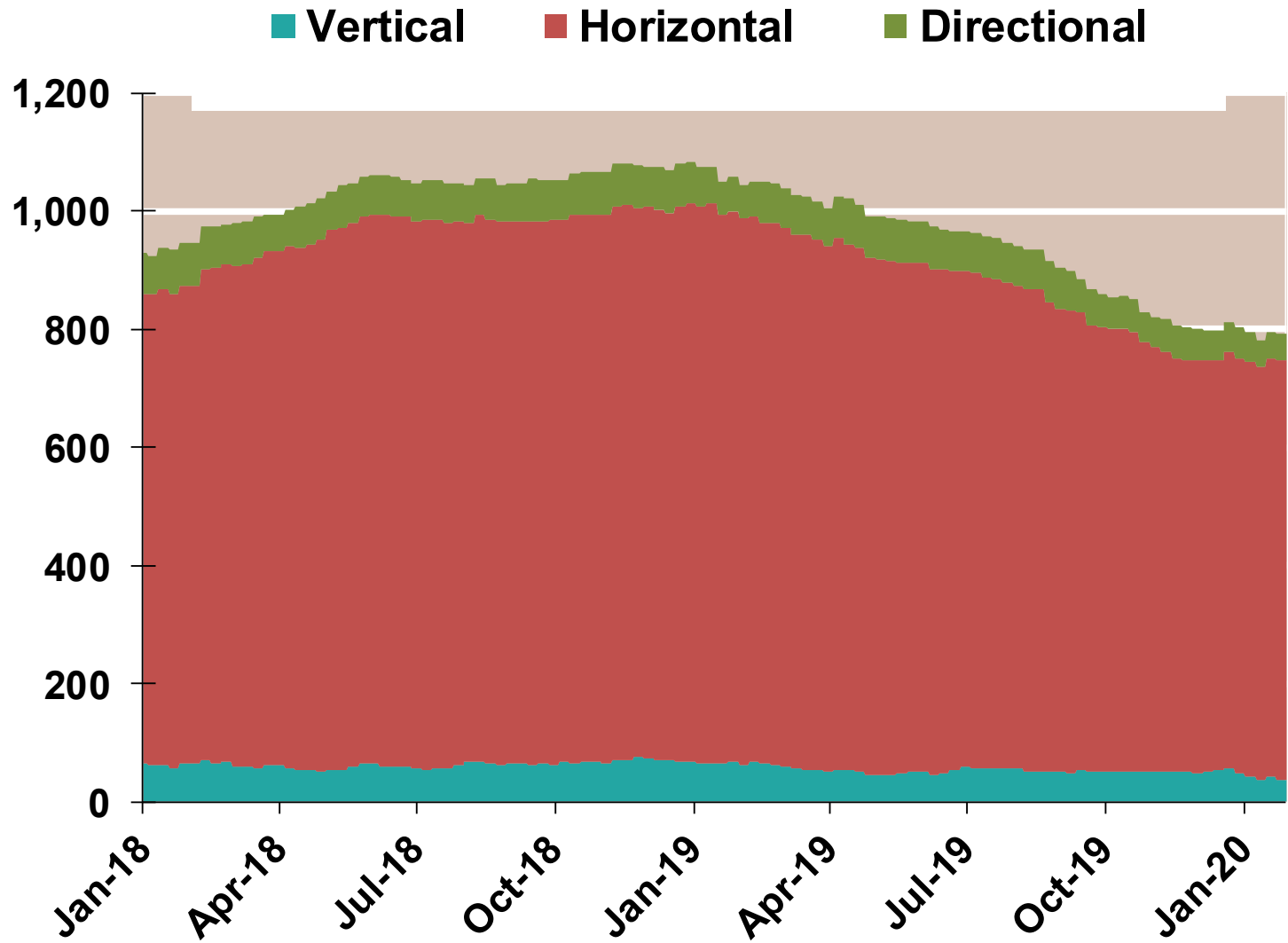
Federal Energy Regulatory Commission **Market Assessments**



National Natural Gas Market Overview: Rig Count by Direction  
**NG Rig by Direction**

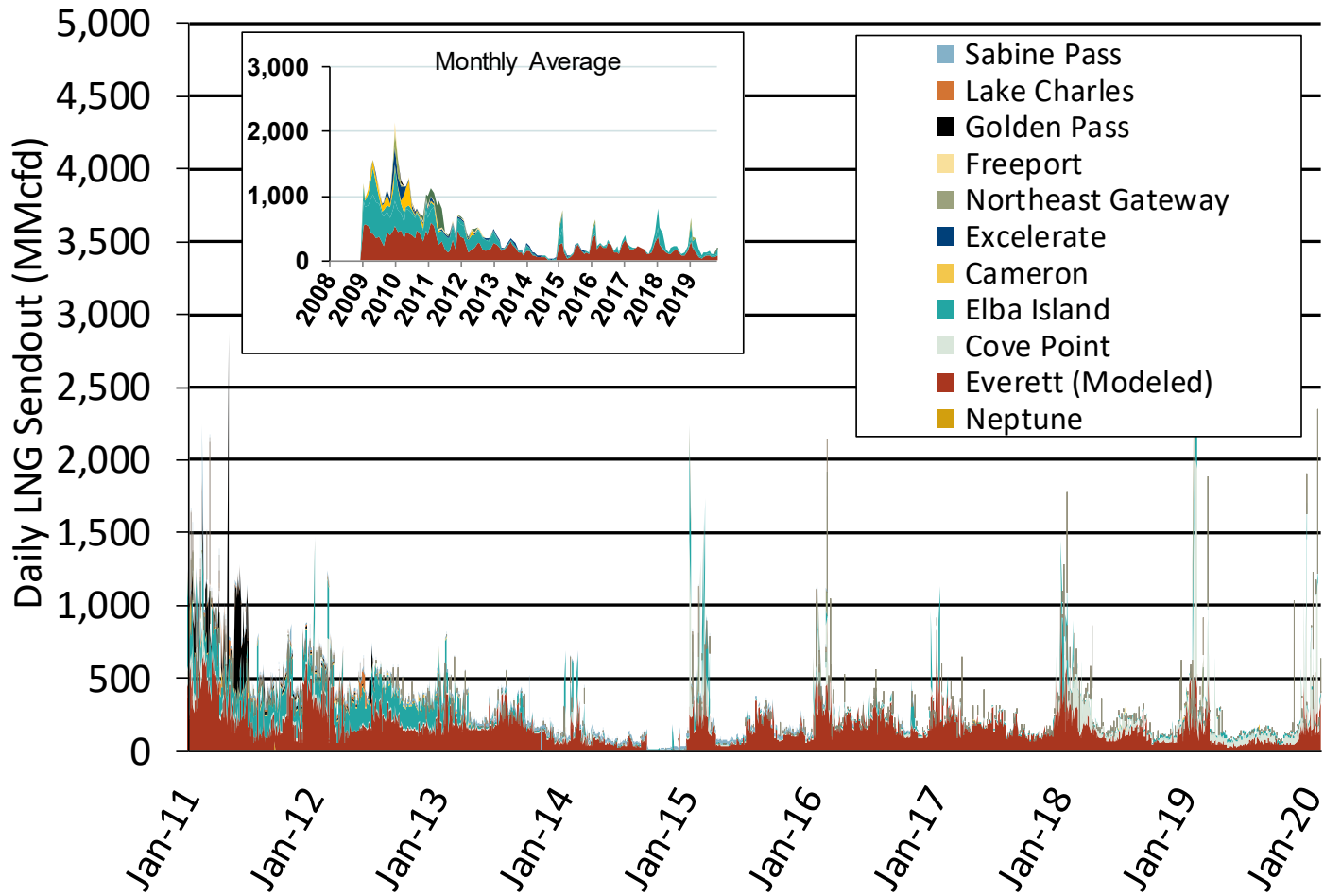
Federal Energy Regulatory Commission **Market Assessments**

**Baker Hughes Rigs By Drill Type**



# Daily Gas Sendout from Existing U.S. LNG Facilities

Federal Energy Regulatory Commission **Market Assessments**



Notes: Everett data includes flows onto the AGT and TGP interstate lines, plus estimates of flows to the Mystic 7 power plant, Keyspan Boston Gas, and LNG trucked out of the terminal. Excludes flows to the Freeport LNG which flows via intrastate pipelines and flows to the Mystic 8 and 9 power plants.

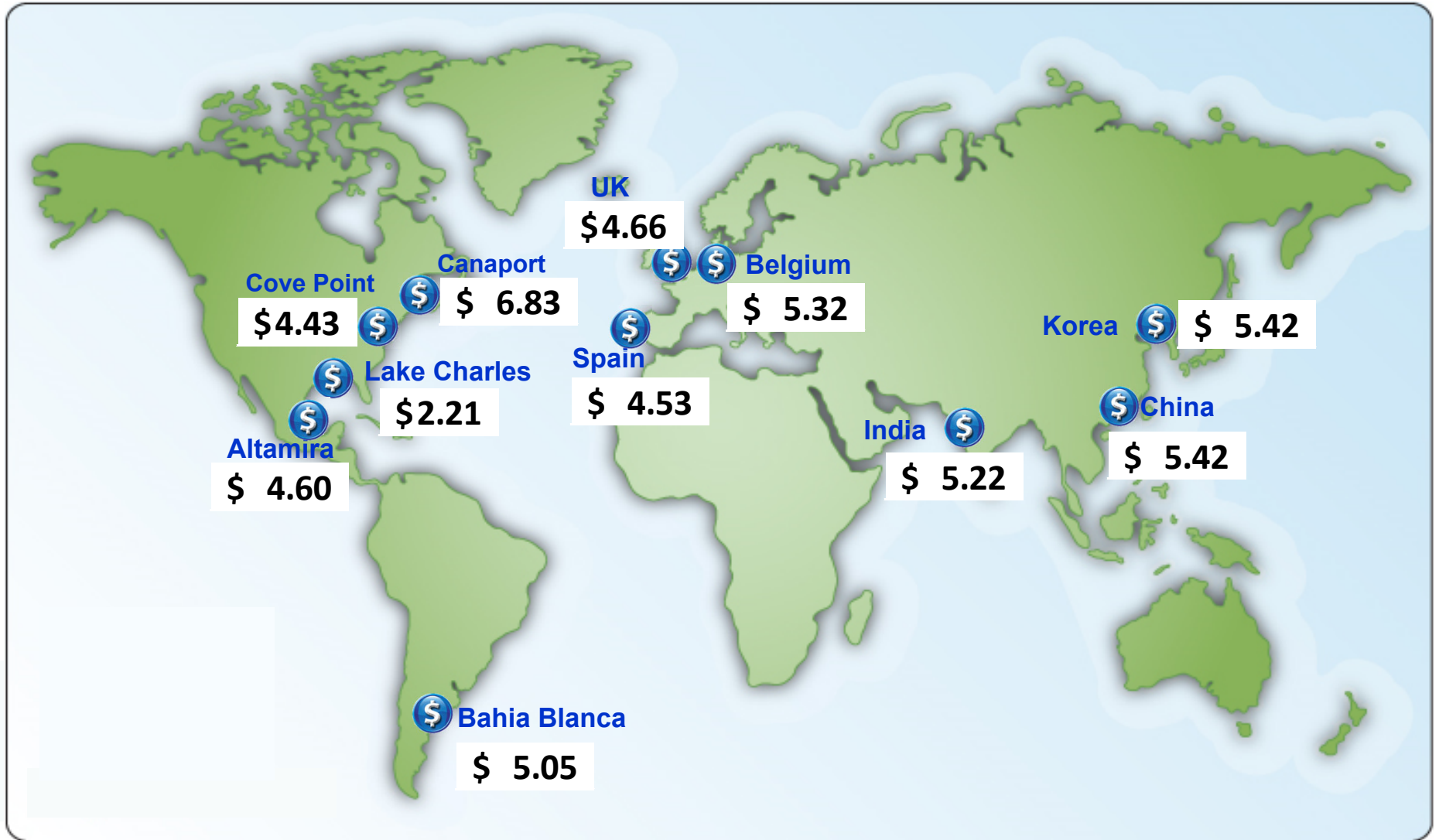
Source: Derived from *Bentek Energy* data

Updated

Jan-2020

# World LNG Estimated Landed Prices: Dec-19

Federal Energy Regulatory Commission **Market Assessments**



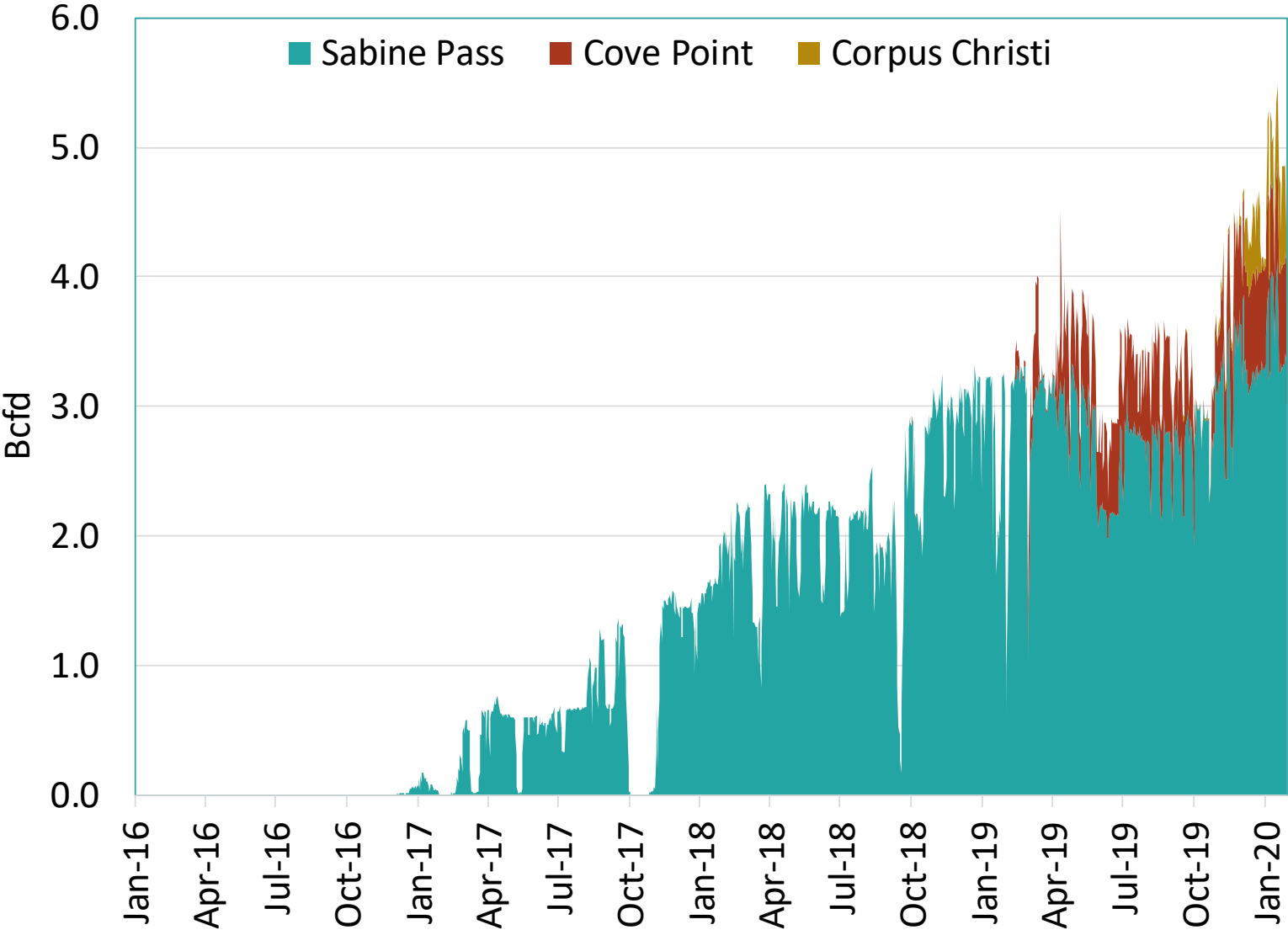
Source: *Waterborne Energy, Inc.* Data in \$US/MMBtu.

Note: Includes information and Data supplied by IHS Global Inc. and its affiliates ("IHS"); Copyright (publication year) all rights reserved. Prices are the monthly average of the weekly landed prices for the listed month. Landed prices are based on a netback calculation.

Updated: Jan-2020

# U.S. Exports of LNG

Federal Energy Regulatory Commission **Market Assessments**



Source: S&P Global Bentek.

Updated: Jan-2020